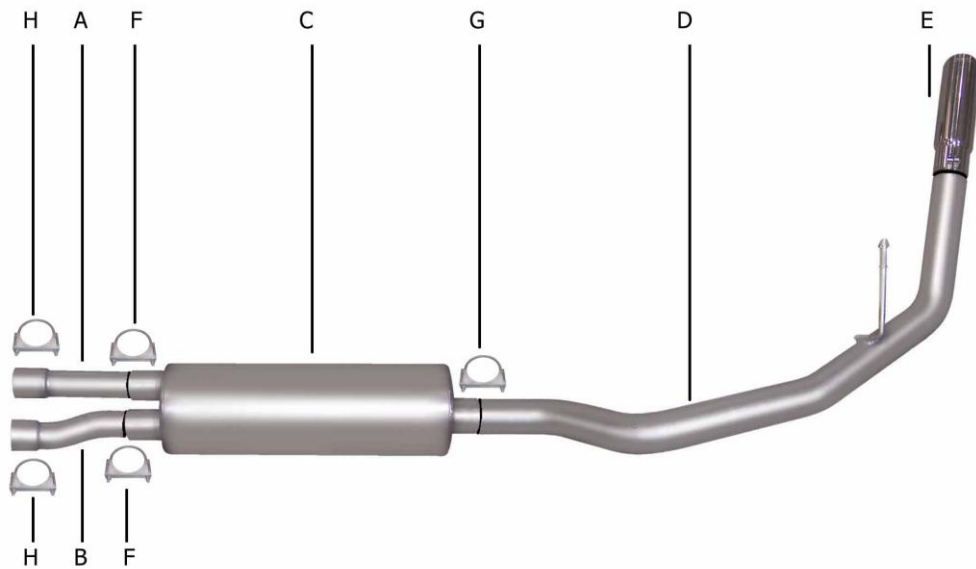




PERFORMANCE EXHAUST SYSTEMS

**INSTRUCTION MANUAL**  
**CAT BACK SINGLE STAINLESS EXHAUST**  
**CADILLAC ESCALADE 6.0L, AWD, 4 DOOR**  
**YUKON, DENALI 6.0L, AWD, 4 DOOR**  
**PART# 615534**



ITEM	PART#	QTY	DESCRIPTION
A	610-700349S-1	1	2.5" STAINLESS HEADPIPE
B	611-700346S-1	1	2.5" STAINLESS HEADPIPE
C	758250S	1	SUPERFLOW STAINLESS MUFFLER
D	475-700351S	1	3" STAINLESS OVERAXLE TAILPIPE
E	500360	1	3.5" STAINLESS STEEL TIP
F	5757	2	2.5" CLAMP
G	4166	1	REAR MUFFLER HANGER
H	5758	2	2 3/4" CLAMPS

# INSTALLATION INSTRUCTIONS # 615534

WHEN INSTALLING THIS EXHAUST SYSTEM, MAKE SURE TO USE PROPER SAFETY PRECAUTIONS. USE JACK STANDS WHEN UNDER THE TRUCK, SET PARKING BRAKE, BLOCK TIRES AND USE SAFETY GLASSES AND GLOVES.

**DO NOT WORK WITH HOT PIPES!**

## SUGGESTED TOOLS:

15MM SOCKET & WRENCH, 9/16", 7/16", 1/2" SOCKETS & WRENCH, JACK STAND, WD-40, HACKSAW

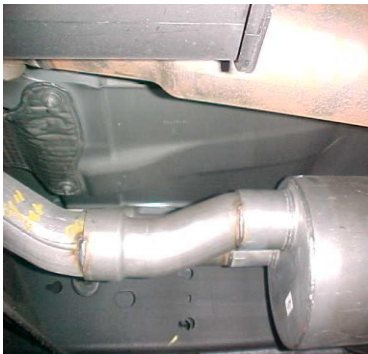
LAY OUT THE EXHAUST AND COMPARE PART NUMBERS WITH THE DRAWING.



TO REMOVE STOCK EXHAUST MEASURE 4" FROM THE FRONT OF THE MUFFLER FORWARD AND CUT. NOW CUT OFF YOUR STOCK TAILPIPE JUST BEHIND THE MUFFLER AND REMOVE. LEAVE ALL RUBBER GROMMETS ON THE HANGER. USE WD-40 TO AID IN THE REMOVAL OF THE EXHAUST AND HANGERS.



INSTALL REAR MUFFLER HANGER #G INTO RUBBER GROMMET LOCATED JUST ABOVE THE OUTLET OF THE MUFFLER. SLIDE CLAMP ONTO MUFFLER OUTLET. DO NOT TIGHTEN.



INSTALL HEADPIPE # A SLIP IT ONTO STOCK HEADPIPE USING CLAMP # H TO SECURE IT. DO NOT TIGHTEN. INSTALL HEADPIPE # B, SLIP IT ONTO THE STOCK HEADPIPE USING CLAMP # H TO SECURE THE HEADPIPE TO THE STOCK PIPE. DO NOT TIGHTEN.



SLIDE TAILPIPE #D INTO MUFFLER 1-1/2" TO 2". INSERT WELDED HANGER INTO RUBBER GROMMET AND CLAMP DOWN TO REAR MUFFLER HANGER.



NEXT INSTALL MUFFLER #C. SLIDE IT ONTO HEADPIPE 1-1/2" TO 2". AND ATTACH USING CLAMPS # F. INLET OF MUFFLER SHOULD FACE TOWARDS THE MOTOR. MUFFLER INLET IS LOOKING INTO THE LOUVERS.



INSTALL YOUR STAINLESS STEEL TIPS. TO CLEAN TIPS USE ANY STAINLESS OR ALUMINUM CLEANER AND A SCOTCH BRITE PAD. NOW TIGHTEN ALL NUTS, BOLTS AND CLAMPS STARTING FROM THE FRONT AND WORKING BACK.

**“MAKE SURE YOU HAVE A 1” CLEARANCE ON ALL PIPES FROM BRAKE AND FUEL LINES, TIRES, SHOCKS, ETC...”**