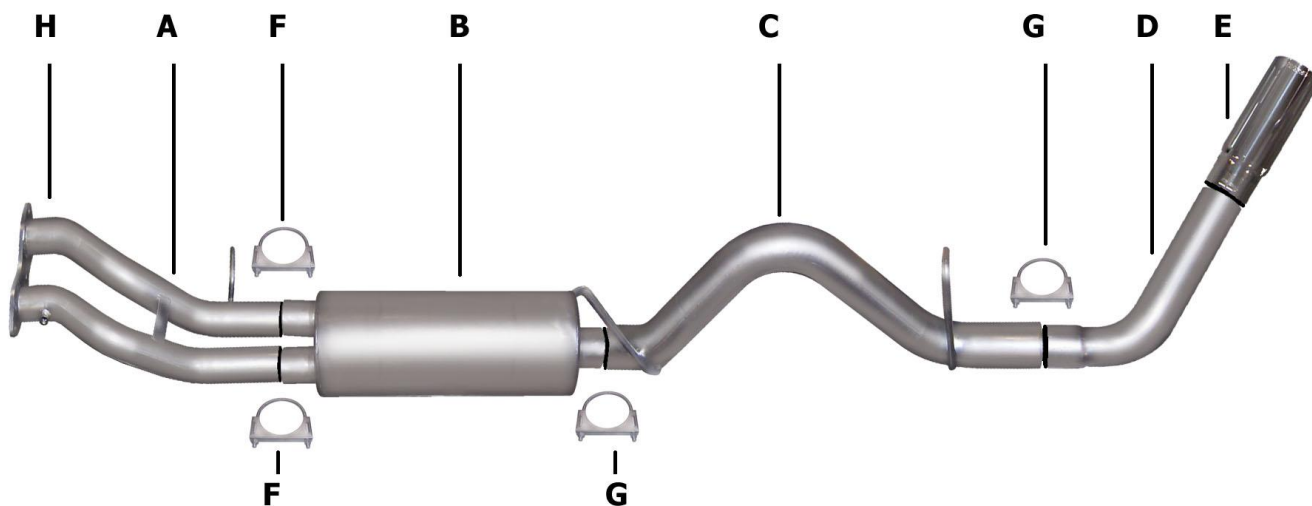




PERFORMANCE EXHAUST SYSTEMS

INSTRUCTION MANUAL
CAT-BACK SINGLE EXHAUST SYSTEM
DENALI, TAHOE, YUKON 5.7L 4 DR 2/4WD
ESCALADE 5.7L 4 DR 2/4WD
PART # 615508



ITEM	PART #	QTY	DESCRIPTION
A	168-500611S	1	STAINLESS HEADPIPE W/FLANGE #GP-96
B	758250S	1	SUPERFLOW STAINLESS DUAL MUFFLER
C	169-500612S	1	3" OVERAXLE STAINLESS TAILPIPE
D	101-50032RS-6	1	3" STAINLESS EXIT PIPE
E	500360	1	3-1/2" STAINLESS STEEL TIP
F	5757	2	2-1/2" CLAMP
G	OHD300	2	3" CLAMP
H	9681	1	CONVERTER FLANGE GASKET

STOCK DUALINLET MUFFLER.

EXHAUST INSTALLATION #615508

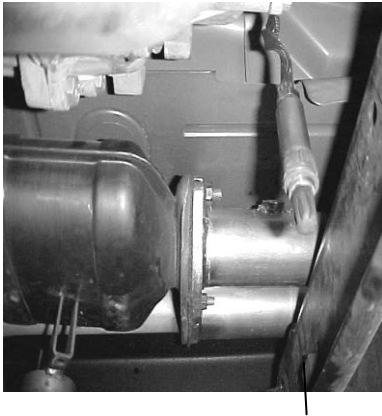
WHEN INSTALLING THIS EXHAUST SYSTEM MAKE SURE TO USE ALL THE PROPER SAFETY PRECAUTIONS. USE JACK STANDS WHEN UNDER TRUCK. SET PARKING BRAKE, BLOCK TIRES AND USE SAFETY GOGGLES.

DO NOT WORK WITH HOT PIPES!

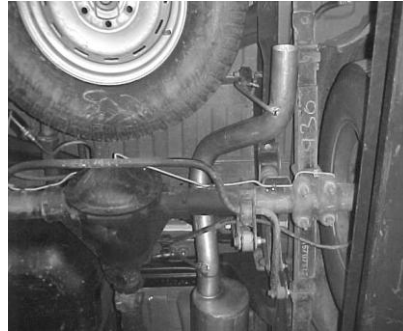
SUGGESTED TOOLS:

15MM SOCKET, 9/16" SOCKET, 1/2" SOCKET, 1/2" WRENCH, JACKSTAND, HACKSAW, WD-40, ANTI-SEIZE, HIGH TEMP O2 SENSOR SAFE GASKET SEALER

LAYOUT THE EXHAUST AND MATCH PART NUMBERS TO THE DRAWING.



REMOVE O2 SENSOR FROM STOCK HEAD PIPE AND UN-BOLT STOCK HEAD-PIPE. STOCK NUTS AND BOLTS WILL BE RE-USED. CUT STOCK EXHAUST JUST BEHIND THE MUFFLER FOR EASIER REMOVAL. LEAVE ALL RUBBER GROMMETS IN PLACE. FOR EASIER REMOVAL OF HANGERS SPRAY WD-40 TO AID YOU IN REMOVING THEM.



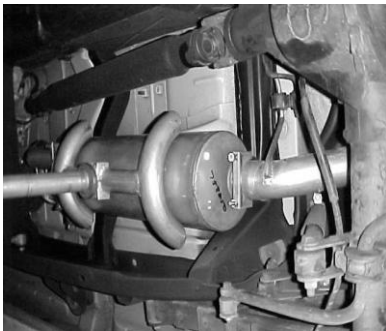
INSTALL THE OVERAXLE TAILPIPE #C INTO MUFFLER AT LEAST 1 1/2" TO 2" USING CLAMP #G. DO NOT TIGHTEN. INSERT WELDED HANGERS INTO RUBBER GROMMETS. THE SPARE TIRE ON SOME VEHICLES MAY NEED TO BE LOOSENED AND PULLED TO THE DRIVER SIDE AND RE-TIGHTENED. ROTATE PIPES UNTIL YOU HAVE AT LEAST A 1" CLEARANCE AWAY FROM ALL SHOCKS AND LEAF SPRINGS.



BOLT HEADPIPE #A USING SUPPLIED FLANGE GASKET #H AND REUSING FACTORY BOLTS. APPLY A SMALL AMOUNT OF HIGH-TEMP O2 SENSOR SAFE SILICONE ON THE FLANGE TO PREVENT ANY LEAKS. INSERT WELDED HANGER INTO RUBBER GROMMET. DO NOT TIGHTEN



INSTALL TURNOUT PIPE #D INTO TAILPIPE USING CLAMP #G. INSTALL THE STAINLESS TIP. AND CLAMP DOWN. USE ANY STAINLESS STEEL OR ALUMINUM CLEANER TO POLISH TIP. DENALI & ESCALADE- YOU MAY NEED TO CUT 2" OFF THE REAR OF THE OVERAXLE PIPE SO THE TIP WILL BE CENTER WITH THE CUTOUT.



SLIDE MUFFLER #B WITH DUAL INLET ONTO HEADPIPE AT LEAST 1-1/2" TO 2". MUFFLER OUTLET SHOULD BE AT THE 12 O'CLOCK POSITION. USE CLAMPS #F TO ATTACH IT TO THE HEADPIPE. MAKE SURE INLETS AND MUFFLER IS LEVEL. USE JACK STAND TO SUPPORT MUFFLER. DO NOT TIGHTEN.



RE-INSTALL O2 SENSOR. USE A SMALL AMOUNT ANTI- SEIZE ON THE THREADS. NOW FIRMLY TIGHTEN ALL CLAMPS, HANGERS, FLANGE, AND BOLTS

MAKE SURE YOU HAVE A 1" CLEARANCE AWAY FROM ALL FUEL LINES, BRAKE LINES, SHOCKS, TIRES, PIPES, ETC...