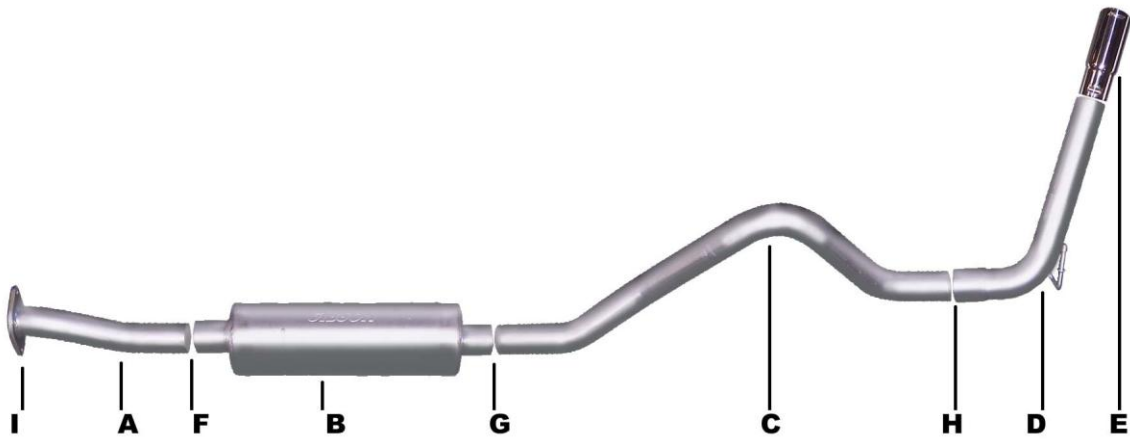




INSTRUCTION MANUAL
CAT-BACK STAINLESS SINGLE EXHAUST
CHEVY/GMC S10, SONOMA & EXTREME
4.3L-V6 2WD ONLY
STANDARD CAB, SHORT BED
PART # 614431



ITEM	PART #	QUANTITY	DESCRIPTION
A	434-700285S	1	STAINLESS HEADPIPE/W FLANGE#GP-305-1
B	788200S	1	SUPERFLOW STAINLESS MUFFLER
C	205-70039S	1	2.5" STAINLESS OVERAXLE TAILPIPE
D	528-700429S	1	2.5" STAINLESS TURNOUT PIPE
E	500361	1	3" STAINLESS STEEL TIP
F	4143	1	FRONT MUFFLER HANGER
G	40068	1	REAR MUFFLER HANGER
H	5757	1	2-1/2" CLAMP
I	BO-1028	1	BOLT KIT FOR HEADPIPE FLANGE

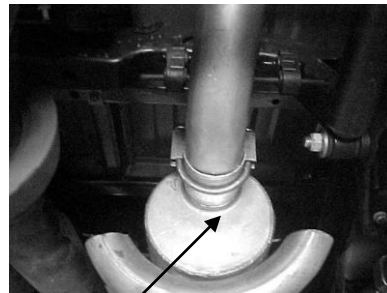
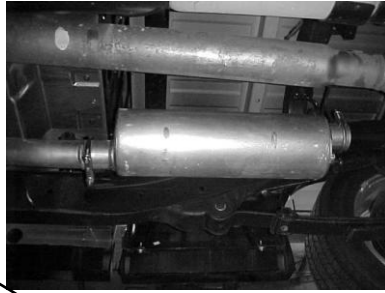
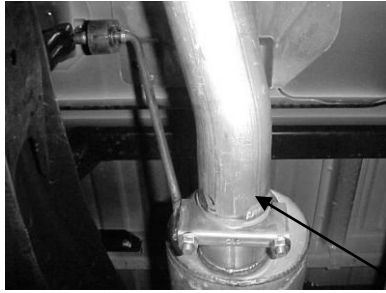
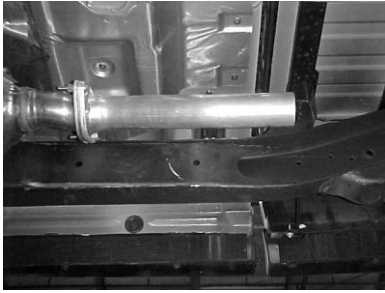
EXHAUST INSTALLATION #614431

WHEN INSTALLING THIS EXHAUST SYSTEM MAKE SURE TO USE PROPER SAFETY PRECAUTIONS. USE JACKSTANDS WHEN UNDER THE TRUCK, ALONG WITH SAFETY GLASSES. DO NOT WORK WITH HOT PIPES.

SUGGESTED TOOLS:

HACKSAW, JACKSTAND 9/16" SOCKET, 1/2" SOCKET & WRENCH, 14MM SOCKET & WRENCH, AND WD-40.

DO NOT DAMAGE FACTORY GASKETS ON HEADPIPE. YOU WILL REUSE.



UNBOLT STOCK EXHAUST FROM BEHIND THE CATALYTIC CONVERTER. LAYOUT THE GIBSON EXHAUST SYSTEM ON THE FLOOR SO YOU CAN COMPARE IT TO THE DRAWING AND PART NUMBERS. BOLT ON THE FRONT HEADPIPE #A USING FACTORY GASKETS AND SUPPLIED HARDWARE KIT # I. RECOMMEND USING EXHAUST TYPE GASKET SEALER TO RE-INSTALL FACTORY GASKET. INSTALL MUFFLER , WITH INLET TOWARDS CONVERTER, ONTO THE FRONT HEADPIPE. MUFFLER INLET IS WHERE LOUVERS ARE FACING FORWARD CATCHING AIR. USE A JACKSTAND TO SUPPORT MUFFLER.

INSTALL FRONT MUFFLER HANGER #F TO FRONT OF MUFFLER AND O.E. HANGER #G TO THE REAR OF MUFFLER BUT DO NOT TIGHTEN. FOR EASIER INSTALLATION OF ALL HANGERS USE WD-40 . MAKE SURE EXIT OF MUFFLER IS AT 12 O'CLOCK, SEE PICTURE
NOTE: ON REAR O.E. T-HANGER #G THE LONGER ROD FROM CENTER GOES TO PASSENGER SIDE. MAKE SURE TO KEEP 1" CLEARANCE FROM ALL PIPES, FUEL LINE, BRAKE LINES, AND TIRES ETC. MUFFLER INLET IS LOOKING INTO THE LOUVERS.



INSTALL THE OVERAXLE TAILPIPE #C INTO THE REAR OF THE MUFFLER AND ATTACH WITH CLAMP # G. BUT DO NOT TIGHTEN BEFORE INSTALLING EXIT PIPE. (REAR FACTORY TAILPIPE HANGER MUST BE UNBOLTED AND ROTATED 180 DEGREES) SEE PICTURE. THEN INSTALL EXIT PIPE #D ONTO OVERAXLE PIPE AND SLIDE WELDED HANGER ON PIPE INTO FACTORY REAR HANGER AND ATTACH WITH CLAMP # H.

ROLL YOUR EXIT PIPE TO YOUR CORRECT ANGLE FOR YOUR TRUCK LIKE THE PICTURE. **AFTER YOUR EXHAUST SYSTEM IS IN PLACE CHECK ALL PIPES AND HANGERS FOR PROPER 1" CLEARANCE.** FIRMLY TIGHTEN ALL CLAMPS. THEN INSTALL STAINLESS TIP TO DESIRED LOOK. TO CLEAN TIP USE STAINLESS OR ALUMINUM CLEANER.

BE SURE TO HAVE A MINIMUM CLEARANCE OF 1 " AWAY FROM ALL BRAKE & FUEL LINES, GAS TANK, TIRES, SHOCKS, PIPES ETC.