

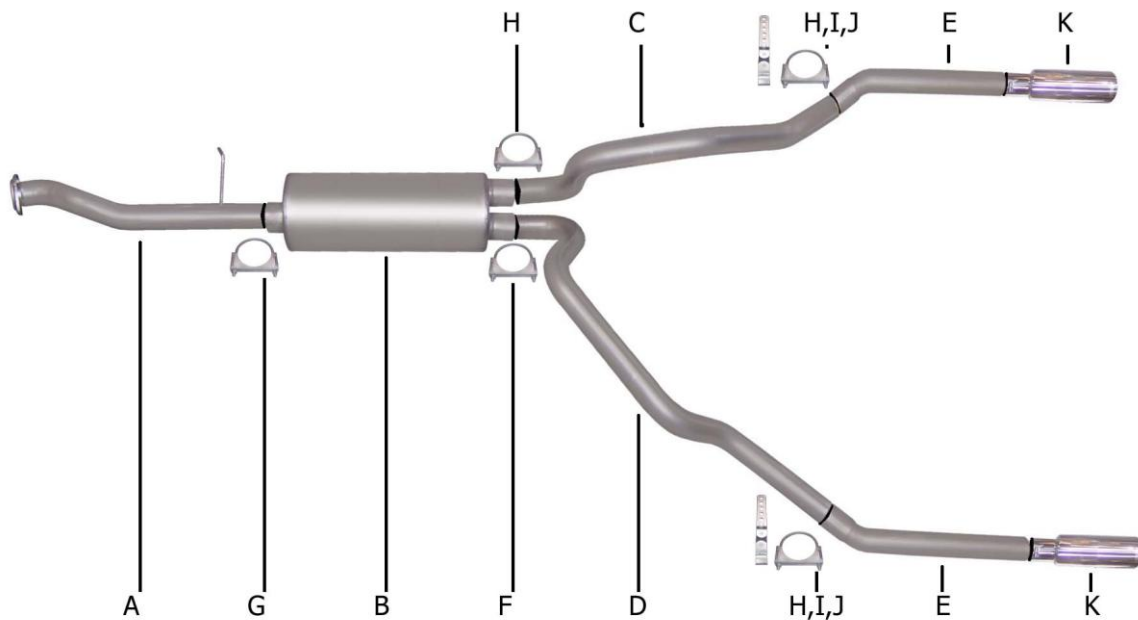


INSTRUCTION MANUAL

CAT-BACK SPLIT REAR EXHAUST

SILVERADO & SIERRA 1500 TRUCK
STANDARD CAB, LONG BED 4.3L-4.8L-5.3L 2/4 WD
STANDARD CAB, LONG BED 4.3L-4.8L, 5.3L 2WD
CLASSIC STANDARD CAB, LONG BED 4.3L-4.8L 2WD

PART # 5548



ITEM	PART #	QTY.	DESCRIPTION
A	700463	1	3" HEADPIPE W/FLANGE #GP- 115
B	758250	1	SUPERFLOW MUFFLER
C	700183	1	2 1/2" PASSENGER SIDE OVERAXLE PIPE
D	700184	1	2 1/2" DRIVERSIDE OVERAXLE PIPE
E	700422	2	2 1/2" EXIT PIPES
F	4192	1	REAR MUFFLER HANGER
G	OHD300	1	3" CLAMP
H	5757	3	2 1/2" CLAMP
I	08269	2	10" METAL HANGER
J	BO-101	2	BOLT KIT FOR 10" HANGER
K	500374	2	3-1/2" STAINLESS TIPS
L	ZIP	2	ZIP TIES

EXHAUST INSTALLATION #5548

When installing this exhaust system make sure to use proper safety precautions. Use jack stands when under the truck, set parking brake, block tires and use safety glasses and gloves.

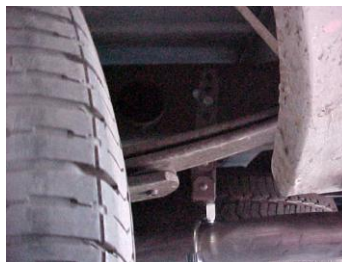
DO NOT WORK WITH HOT PIPES!

SUGGESTED TOOLS:

1/2" ,9/16", 15mm wrench and socket, Wd-40, Hacksaw, Jack Stand



Lay out the exhaust on the floor so it looks like the drawing and compare parts with manual. To remove the stock exhaust remove it from the 2-bolt flange located in front of the muffler. **You will re-use your stock hardware.** Leave all rubber grommets in place. Use WD-40 to aid in removal of exhaust and hangers. Use hacksaw to



Install metal hangers # I Into holes located approximately 22" from the rear of the frame. Metal hangers are mounted on the outside of the frame. Use the hardware that is provided. The bolt and the washer will go into the 3rd hole from the top of the hanger. You may need to loosen spare tire for easier installation.



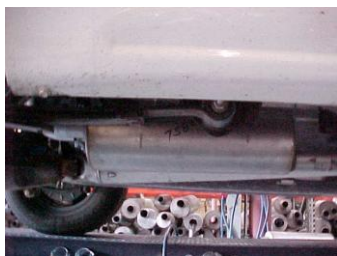
Install head pipe # A onto you're existing stock flange use your factory hardware. Use a jack stand to support the converter. Insert welded hanger into rubber grommet. Do not tighten.



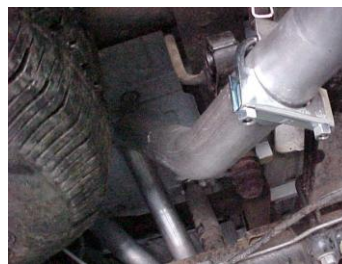
Install the driver side tailpipe # D into the muffler at least 1-1/2" to 2". This pipe will route over the axle and between the shock and tire. Use clamp # F to secure pipe to the muffler. Do not tighten.



Install the passenger side tailpipe # C into the muffler at least 1-1/2" to 2". Use clamp # H to secure pipe to muffler. Do not tighten. The tailpipes both will lean



Install muffler onto head pipe # A 1-1/2" to 2" with the louvers facing towards the converter. Use a jack stand to support the muffler. Use clamp # G to secure the muffler to the head pipe. Do not tighten



Install exit pipes # E Use clamps # H to secure exit pipes to tailpipes. These clamps also attach to the metal hangers # I. You will need to rotate in order to adjust for clamping. Now go back and tighten all clamps, nuts and bolts. Start from the front and work back. Install Stainless tips.

