



# Installation Instructions

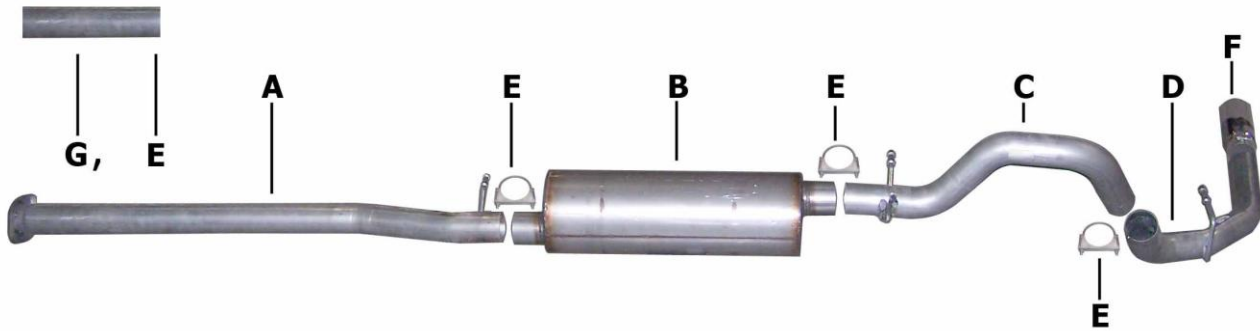
Cat-Back Single Exhaust

Silverado / Sierra 1500 Truck

Crew Cab, Short Bed, 4.8L-5.3L-6.0L 2/4wd

Extended Cab, Standard Bed, 4.8L-5.3L 2/4wd

Part #315604



ITEM	PART	QUANTITY	DESCRIPTION
A	700895	1	3" Headpipe w/ Flange
B	788824	1	Superflow Muffler
C	700896	1	3" Over Axle Tailpipe
D	700432	1	3" Exit Pipe
E	OHD300	4	3" Clamp
F	500379	1	4" Stainless Tip
G	701092	1	3" Adapter for 2009 models

# Installation Instructions #315604

When installing this exhaust system make sure to use proper safety precautions. Use jack stands when working under the vehicle, set parking brake, block tires and use safety glasses and gloves. Allow exhaust to cool before attempting installation. Severe injury or burns could occur if safety measures are not taken.

**SUGGESTED TOOLS:** 1/2", 9/16", 15mm wrenches & sockets, WD-40, hacksaw, jack stands

1. Disconnect the negative battery cable before removal of OEM exhaust. This will allow the computer to reset and recognize the new exhaust. Lay out the exhaust on the floor so it looks like the drawing and compare parts with manual.



2. To remove stock exhaust, unbolt it at the flange behind the Y-pipe. Make sure to leave all rubber grommets in the factory location. You will re-use stock nuts and bolts. For easier removal of exhaust, cut behind the muffler. Use WD-40 to remove hangers from grommets.



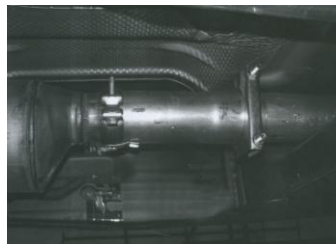
5. Install the over axle tailpipe #C onto the outlet of the muffler 1.5"-2" using clamp #E to secure pipe to muffler. Insert welded hanger into rubber grommet.



3. Bolt headpipe #A to the stock flange re-using the factory nuts and bolts. Insert welded hanger into rubber grommet. Do not tighten, just make snug.

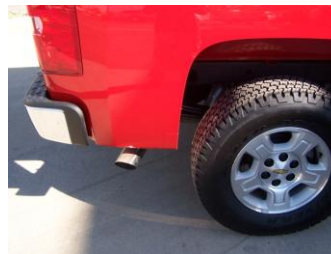


6. Slide exit pipe #D onto over axle tailpipe using clamp #E to secure. Rotate exit pipe until it is at the correct angle for your truck. Insert welded hanger into rubber grommet.

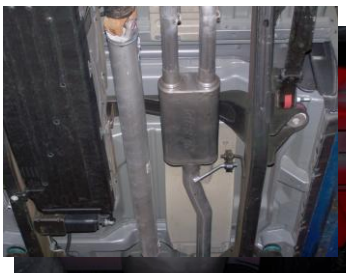


### 2009 Models Only

Measure 8" (Extended Cab, 12") from the flange on your new headpipe #A and cut. Attach adapter pipe to new headpipe with the 3" clamp. You will re-use the factory band clamp.



8. Install stainless steel tip. Clamp down. When you have everything in place, firmly tighten all bolts and clamps down securely. Use stainless steel or aluminum cleaner to polish tips. Inspect all fasteners after 25-50 miles of operation and re-tighten as necessary.



4. Slide the muffler into the headpipe at least 1.5"-2". Use a jack stand to support the muffler. Use clamp #E to secure muffler assembly to the headpipe. The outlet of the muffler will be at approximately 11 o'clock. The muffler inlet is looking into the louvers. Do not tighten.

GIBSON EXHAUST systems are designed on a factory stock vehicle. Any aftermarket products installed could increase the sound levels of the exhaust.

**Make sure there is a 1" clearance from ALL rubber brake lines, shock boots, lines, tires, etc. to prevent heat related damage or fire.**