

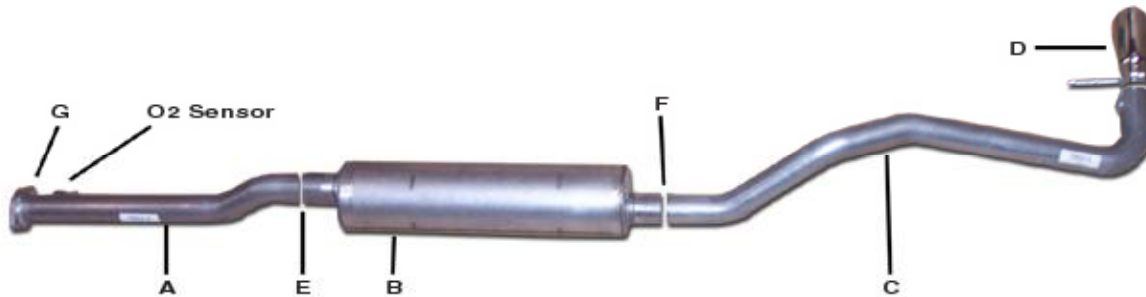


PERFORMANCE EXHAUST SYSTEMS

**INSTRUCTION MANUAL**  
**CAT-BACK SINGLE EXHAUST**  
**TACOMA TRUCK 2.7L-3.4L DOUBLE CAB/ SHORT BED 4DR 2WD**  
**TACOMA TRUCK 2.7L-3.4L XTRA CAB/SHORT BED 2D 2WD**

**PART # 18800**

3.4L- FIT WITH FACTORY SUPERCHARGER & TRD, SR5 MODELS



ITEM	PART #	QTY	DESCRIPTION
A	700312	1	HEADPIPE W/ FLANGE #GP-113, GP-126
B	788500	1	SUPERFLOW MUFFLER
C	700313	1	2 1/2" OVERAXLE TAILPIPE
D	500361	1	3" STAINLESS TIP
E	5757	1	2 1/2" CLAMP
F	40105	1	OE HANGER
G	BOLT KIT FOR O2 SENSOR		
	225	2	STAR WASHER
	4316	2	METRIC NUTS

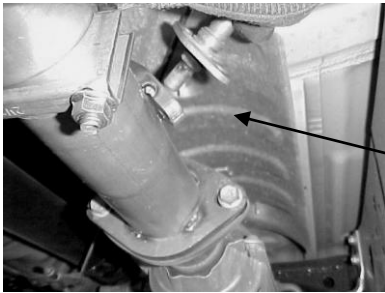
# INSTALLATION INSTRUCTIONS #18800

WHEN INSTALLING THIS EXHAUST SYSTEM, MAKE SURE TO USE PROPER SAFETY PRECAUTIONS. USE JACK STANDS WHEN UNDER THE TRUCK, SET PARKING BRAKE, BLOCK TIRES AND USE SAFETY GLASSES AND GLOVES. DO NOT DAMAGE STOCK HEADPIPE FLANGE BOLTS AND GASKETS. YOU WILL RE-USE THEM. **DO NOT WORK WITH HOT PIPES!**

## SUGGESTED TOOLS

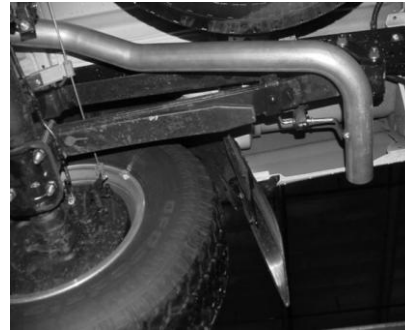
12MM SOCKET & WRENCH, 14MM SOCKET & WRENCH, 9/16" SOCKET & WRENCH, 7/16" SOCKET & WRENCH, O2 SENSOR GASKET SEALER, JACK STAND, WD-40, HACKSAW

LAY OUT THE GIBSON EXHAUST ON THE FLOOR AND COMPARE PART NUMBERS WITH THE MANUAL. REMOVE THE FACTORY O2 SENSOR LOCATED IN FRONT OF THE MUFFLER. YOU WILL RE-USE YOUR FACTORY O2 SENSOR GASKET. THEN CUT STOCK EXHAUST DIRECTLY BEHIND THE MUFFLER. USE WD-40 ON ALL RUBBER GROMMETS, NUTS AND BOLTS FOR EASY REMOVAL.



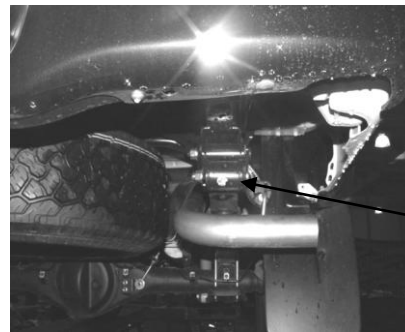
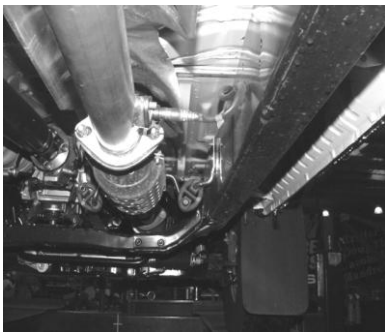
INSTALL REAR MUFFLER HANGER #F AT THE REAR OF THE MUFFLER AND ATTACH TO RUBBER GROMMETS. THE VERTICAL ROD WILL BE AIMING UP ON THE DRIVER SIDE OF THE VEHICLE.

UNBOLT STOCK HEADPIPE AND REMOVE BOLTS & GASKET. DO NOT DAMAGE THIS GASKET YOU WILL RE-USE IT. YOU WILL RE-USE FACTORY NUTS AND BOLTS.



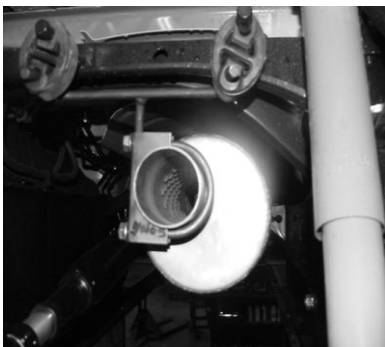
INSTALL THE OVERAXLE TAILPIPE #C INTO THE OUTLET OF THE MUFFLER 1-1/2"-2".

BOLT HEADPIPE #A TO STOCK FLANGE. RE-INSTALL O2 SENSOR USING FACTORY GASKET, INTO HEADPIPE BEHIND FLANGE AND USE BOLT KIT #G TO ATTACH. WE RECOMMEND TO USE O2 SENSOR SAFE GASKET SEALER TO HELP PREVENT LEAKS.



INSERT HANGER INTO RUBBER GROMMET.

SLIDE MUFFLER #B ONTO HEADPIPE #A 1-1/2"-2". THE MUFFLER INLET WILL HAVE THE INSIDE LOUVERS FACING FORWARD TOWARDS THE ENGINE AND THE REAR OUTLET OF THE MUFFLER WILL BE AT 10:00 O'CLOCK POSITION.



NEXT INSTALL THE STAINLESS STEEL TIP TO YOUR DESIRED LOOK. USE ANY ALUMINUM OR STAINLESS CLEANER TO CLEAN TIPS. NOW GO BACK AND CHECK ALL CLEARANCES AND TIGHTEN ALL CLAMPS.

**"MAKE SURE YOU HAVE A MINIMUM OF A 1" CLEARANCE ON ALL PIPES FROM ALL RUBBER BRAKE LINES, TIRES, SHOCKS, SPARE TIRE, FUEL LINES, ETC."**