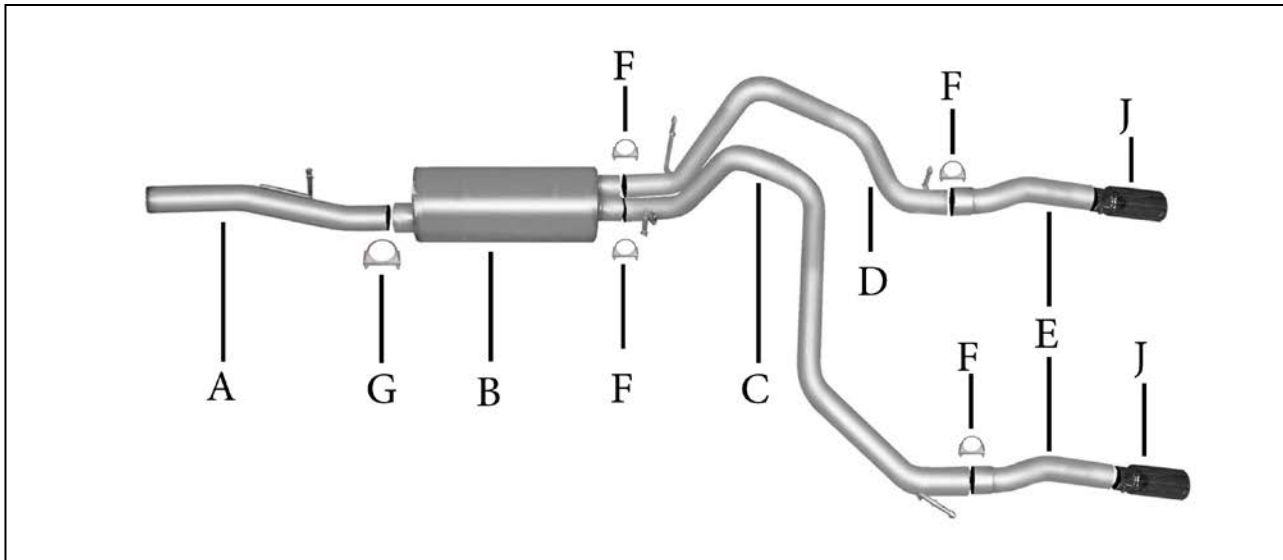


**INSTALLATION INSTRUCTIONS**  
**CAT-BACK SPLIT REAR EXHAUST**  
**Chevrolet/GMC Tahoe/Yukon 1500 5.3L 2/4WD**

**PART #65669**



ITEM	PART #	QTY	DESCRIPTION
A	999700811S	1	3"Headpipe W/welded hanger
B	758300S	1	Superflow Muffler
C	999700814S	1	2.25" Drivers Side Tailpipe
D	999700813S	1	2.25" Passenger Side Tailpipe
E	999700815S	2	2.25" Exit Pipe
F	5756	4	2.25" Clamp
G	OHD300	1	3" Clamp
H	800015	1	Drivers Side Rear Hanger
I	BO-1080	1	Bolt Kit For Rear Hanger
J	500639	2	4" Rolled Slash Tip
L	ZIP	2	Zip Ties

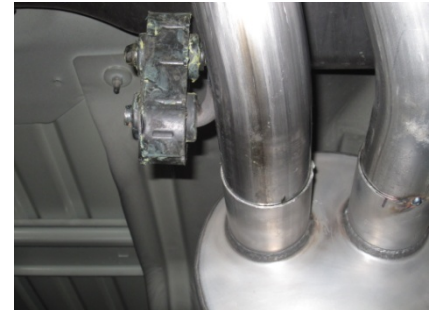
# EXHAUST INSTALLATION

## PART# 65669

WHEN INSTALLING THIS EXHAUST SYSTEM MAKE SURE TO USE ALL THE PROPER SAFETY PRECAUTIONS. USE JACK STANDS WHEN UNDER TRUCK, SET PARKING BRAKE, BLOCK TIRES AND USE SAFETY GLASSES.

**DO NOT WORK WITH HOT PIPES!!!**

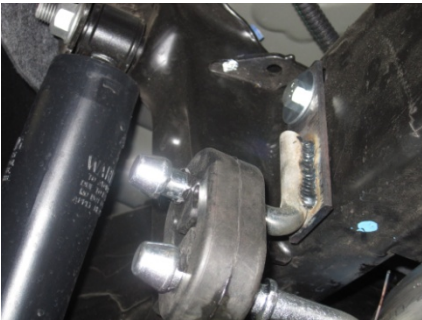
1. Disconnect the negative battery cable before removal of the OEM Exhaust. This will allow the computer to reset and recognize the new exhaust. Lay out the exhaust on the floor so it looks like the drawing and compare parts with manual. Remove the factory exhaust by cutting behind the factory muffler. Once the tail pipe has been removed **un-bolt the muffler and head pipe at the clamp located in front of the factory muffler**. Use wd-40 or another type of penetrating oil to remove the rubber grommets. Do not damage these they will be re used.



2. Install headpipe #A onto your factory pipe using your stock clamp insert welded hanger into the rubber grommet leave clamp loose.

3. Install muffler #B onto headpipe 1.5" to 2" muffler should be level use clamp #E to secure together do not tighten.

4. Next install Drivers side overaxle tailpipe #C into muffler 1.5" to 2" insert welded hanger into rubber grommet use clamp # F to secure pipe to muffler do not tighten



5. Next install drivers side rear hanger and grommet with bolt kit provided see picture the hanger goes on the outside of the frame and bolts through the whole frame

6. Next install passenger side tailpipe # D into muffler 1.5" to 2" insert welded hangers into rubber grommets use clamp #F to secure pipe together do not tighten

7. Install exit pipes #E onto tailpipes use clamp # F to secure together

**"MAKE SURE YOU HAVE A 1" CLEARANCE ON ALL PIPES FROM ALL RUBBER BRAKE LINES, SHOCK BOOTS, TIRES, ETC..." TORQUE ALL CLAMPS TO APPROX. 100 TO 150 FT LBS.**