

FLEET & HEAVY-DUTY



## FLEETRANNER® BELTS



 **FleetRunner®**

### The Best Belts For Your Fleet

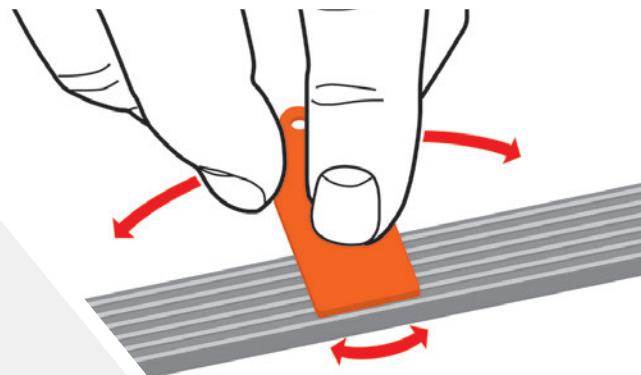
#### GO FURTHER WITH FLEETRANNER

Don't settle for the limited service life of other belts, which drive up maintenance costs and take your trucks off the road. With more than 40% better load and wear protection, FleetRunner Heavy-Duty belts last longer between services, saving your fleet money and downtime.

# FLEETRANNER® BELTS

## HOW TO INSPECT TODAY'S BELTS

Neoprene belts manufactured before the year 2000 show obvious failure signs such as cracks. Today's EPDM serpentine belts wear out gradually, much like a tire, and don't always show signs of visual wear. A serpentine belt can appear to be in good condition when it's actually near failure. The **Gates Belt Wear Gauge** provides a simple and reliable way to determine if a serpentine belt has lost enough material to negatively affect performance and warrant replacement.



## FLEETRANNER HEAVY-DUTY BELTS

- › Last 34% longer than OE belts
- › Last 4X longer than other Aftermarket belts
- › Adhesion gum layer gives composite belt material superior durability
- › Superior resistance to the high heat conditions of modern diesel engines
- › Lowest cost per mile

## BE SYSTEM SMART

At every scheduled preventive maintenance cycle, use the **Gates Belt Wear Gauge** to determine if a serpentine belt has lost enough material to negatively affect performance. As little as 5% belt rib wear can cause loss of tension, noise and heat in the system.

Replacing a belt? Don't forget about the tensioner & pulleys! All parts in a system are engineered to work in concert and wear at about the same rate. **Be System Smart** and complete a full repair by inspecting and replacing all components at the same time to ensure proper system function.