



**MARINE PRODUCTS  
COLLECTION**





# OVER 55 YEARS OF INNOVATION

Our people take pride in the work they do. The ownership and pride our employees have for the products they produce and our company's half-century of experience in metal fabrication and upholstery combine to produce the highest quality, most innovative products in the recreational marine industry. Our reputation for innovation and craftsmanship is well-known as we provide pleasure boaters with marine accessories that give them the best value for their dollar year after year.

The results of our efforts are proudly displayed in this catalog. You will find **GARELICK EEz-In** products as original equipment on some of the best boats built today and at better marine stores everywhere.

These brands are among the best Boat Builders in the Recreational Marine Industry. They specify **GARELICK EEz-In** Products as original components aboard their boats.

## 1950's                      1960's                      1970's



### THE BOARDING LADDER THAT MADE IT EASY TO COME ABOARD A BOAT!

The original was lighter weight, so it floated, it had twin hooks for greater stability and most important, it would safely and easily allow a swimmer or skier to board over the side gunwale. Refined versions continue to sell today and is the basis of all modern day designs. It was the right product at the right time!



### SITTING PRETTY AND EXTENDING YOUR REACH

Lightweight aluminum was the perfect answer for Deck Chairs and Boat Hooks. From various seating styles that set the trend to compact adjustable length boat hooks that were found useful on any type or size boat, these products became instant hits and best sellers.



### RAISE AND LOWER AUXILIARY OUTBOARDS

A welcome idea to many boatmen, auxiliary motor brackets made the use of auxiliary outboard power aboard power and sailboats more practical and convenient. Lifting lower H.P. outboards is still easiest with **GARELICK EEz-In**.



## QUALITY PEOPLE MAKE QUALITY PRODUCTS



FLORIDA MFG FACILITY



MINNESOTA HQ & MFG

### FROM SAINT PAUL PARK, MINNESOTA TO LARGO, FLORIDA...

Garelick's manufacturing facilities encompass 167,000 square feet for production and warehousing space. We are dedicated to an ongoing process of creating, building and refining our products. Uniform quality is assured with efficient and modern manufacturing methods.

Our trade name **EEj-In** is derived from the expression "Don't squeeze in, **EEj-In**" It refers to how much easier it was to board a boat from the water with use of our original product. This was the concept when we developed the first lightweight double hook boarding ladder for the recreational marine industry.



#### AN IMPORTANT WORD ABOUT THIS CATALOG:

We hope you find this catalog helpful, as we have tried to make it as comprehensive and factual as possible. However, since this catalog was printed, some of the information you see within may have been updated. We reserve the right to make changes at any time, without prior notice, in prices, colors, materials, specifications and models, including the discontinuation of models. If you want to reproduce any illustrations or copy contained in this catalog for any purpose, written permission must be received. Component parts for any model shown in this catalog are available.

**NOTE: THESE PRODUCTS ARE NOT MANUFACTURED FOR COMMERCIAL USE**

## 1980's



### TRUE COMFORT AND UPSCALE STYLING

From our first boat seat back in the fifties, to the modern styles of today, we have always built a more comfortable, longer lasting and higher quality seat. The Soft Look was a prime example of **GARELICK EEj-In** quality, durability and industry leading style!

## 1990's



### THE "MILLENNIUM" BEGINS AN ALL NEW ERA IN SEAT PEDESTAL HARDWARE

Responding to boat builders' needs, the development of our positive lock, lever actuated seat slide and stanchion swivel system is the benchmark in the boating industry. For today's best boat brands and the boating consumer, this unsurpassed standard continues its rock solid advantage.

## TODAY



### CONVENIENCE, QUALITY & PERFORMANCE CONVERGE!

From the award winning design of the **EEj-In** line of Boarding Ladders to the elegance of Garelick's new remote-controlled seat hardware systems, **GARELICK EEj-In** products are built on decades of innovation; integrating features and materials sure to set the bar for convenience, quality and performance, now and into the future!



## BOARDING LADDER COLLECTION

- Gull Wing Step Boarding Ladder **07**
- Sport/Diver Series **08**
- **GARELICK EEg-In II** Integrated Boarding Ladder System **10**
- Telescoping Stainless Steel Ladders **11**
- Transom Boarding Ladders & Platforms **13**
- Gunwale Boarding Ladders **15**
- Pontoon Boarding Ladders **16**
- Dock/Raft Ladders **18**
- Foot Rests and Cockpit Steps **19**

## PAGE

## MARINE SEATING COLLECTION

- Commander Helm Seating System **21**
- Ocean Elite Seating **22**
- Offshore Seating **23**
- Upholstered Seating **24**
- Captain/Helm and Bucket Seating **25**
- Cockpit/Helm Seating and Accessory Products **25**
- Rotationally Molded Center Console Seating **26**
- Fold-Down Fishing Boat Seating **28**

## SEAT AND TABLE HARDWARE COLLECTION

- Commander/Yacht Hardware (**4.0 Series** - For Boats Over 35') **31**
- Remote Lever Actuated Seat Hardware **32**
- Mid-Range Seat Hardware (**3.5 Series** - For Boats Over 22') **34**
- Small Boat Seat Hardware (**2.875 Series** - For Boats 12'-45') **36**
- Low Profile Surface Mount Seat Hardware **42**
- Seat Hardware Accessories **44**
- Yacht Table and Deck Hardware Systems **46**
- Stowable Deck Table Hardware (Power, Pontoon, & Sail) **47**

## DECK CHAIR AND TABLE COLLECTION

- Folding Deck Tables **50**
- Mariner Chair – Aluminum **51**
- Designer Folding Deck Chairs **51**

## BOAT HOOKS AND MARINE ACCESSORIES

- Boat Hooks **52**
- Paddles **52**
- Boat Cover Support Poles **53**
- Boat Maintenance Accessories **53**
- Safety and Securing Accessories **53**

## OUTBOARD MOTOR ACCESSORY COLLECTION

- HYDRA-Powered Outboard Motor Brackets **56**
- Manual Hydraulic Outboard Motor Brackets **57**
- Aluminum Outboard Motor Brackets **58**
  - For 4 or 2 Stroke Motors
- Aluminum/Stainless Steel Outboard Motor Brackets **59**
  - For 2 Stroke Motors
- Stationary Outboard Motor Brackets **60**
- Boat Dollies **60**
- Outboard Motor Carriers **61**

\* Page and Product Reference Guide is Located on pg 63

# NEW PRODUCTS

## QUALITY, INNOVATION AND INTEGRITY

**GARELICK E&I** continues to lead the way in marine technology with the introduction of lever actuated seat and table hardware systems and numerous new boarding ladder styles as original equipment on boats. We continue to produce high quality, superior performing products for the discriminating boat owner.

### BOARDING LADDER COLLECTION

• <b>12360</b>	Transom Pontoon Ladder	<b>16</b>
• <b>12370</b>	Transom Pontoon Ladder	<b>16</b>
• <b>19612</b>	Stainless Steel Transom Ladder Step	<b>14</b>
• <b>19700</b>	EEz-In II Integrated Ladder	<b>11</b>

### MARINE SEATING COLLECTION

• <b>48391</b>	Quality Fold Down Seat	<b>28</b>
• <b>48791</b>	Fisherman Fold Down Seat	<b>28</b>
• <b>48820</b>	Commander II Helm Seating	<b>21</b>
• <b>48891</b>	Classic Fold Down Seat	<b>29</b>
• <b>48930</b>	"Ocean Elite" Bolster Flip-up Seat	<b>22</b>
• <b>48935</b>	"Ocean Elite" Love/Helm Seat	<b>22</b>
• <b>48970</b>	970 Helm Seat	<b>23</b>
• <b>48975</b>	Compact Bolster Seat	<b>23</b>
• <b>75154</b>	Fold Down Seat Hinges	<b>45</b>

### TABLE HARDWARE COLLECTION

• <b>75337</b>	Side Mount S.S. Table w/ Oval Top	<b>49</b>
• <b>75359</b>	Side Mount Table w/ Oval Top	<b>49</b>
• <b>75400</b>	Stowable Cockpit Table w/ Oval Top	<b>49</b>
• <b>75405</b>	Stowable Cockpit Table w/ Oval Top	<b>49</b>



## MATERIALS & FEATURES

## BOAT TYPES

<b>HIGH TENSILE ALUMINUM</b>	High Tensile Aluminum has a far greater Strength to Weight ratio than lesser grades of Aluminum. This added strength and stiffness allows for the production of lightweight and durable <b>GARELICK E&amp;I</b> products.	 <b>YACHT</b>	<b>YACHTS &amp; CRUISERS:</b> Generally over 35' in length with accommodations and facilities for overnight trips.
<b>ANODIZED ALUMINUM FINISH</b>	Anodized Aluminum is treated with a special electrolyte solution providing a tough, oxidized coating that helps inhibit corrosion and enhances appearance in both fresh and salt water environments.	 <b>CENTER</b>	<b>CENTER CONSOLES:</b> 15-35' in length, Center-Consols have their helm and engine controls located on the center line approximately midships.
<b>DIE-CAST ALUMINUM</b>	Die Cast parts are created in a hardened steel mold. Molten Aluminum is injected into these molds under very high pressures yielding highly accurate parts with very good surface finishes and exceptional wear properties.	 <b>RUNABOUT</b>	<b>RUNABOUTS:</b> Runabouts usually seat four to six people, and depending on their size (anywhere from 15-35'), can have a cuddy cabin.
<b>SAND-CAST ALUMINUM</b>	High Tensile marine grade alloy aluminum is used to form solid castings for unique marine hardware designs.	 <b>PONTOON</b>	<b>PONTOON BOATS:</b> Pontoon boats offer a stable, open deck perfect for relaxing, swimming and fishing in calm waters.
<b>ABYC H31</b>	The American Boat & Yacht Council provides safety guidelines for the boating industry. These standards are used by the finest boat builders. <b>GARELICK E&amp;I</b> seat hardware meets or exceeds the safety recommendations of this council.	 <b>DECK</b>	<b>DECK BOATS:</b> Deck Boats combine the maneuverability of a runabout with the comfort and space of a pontoon. Generally 15-28' in length.
<b>MARINE GRADE VINYL</b>	Heavy weight, 30oz. vinyl material offers increased UV and Mildew resistance, Antimicrobial Protection and exceptional Durability.	 <b>BASS</b>	<b>BASS AND WALLEYE BOATS:</b> Highly maneuverable boats between 15' and 25' designed specifically for fishing on inland lakes and rivers.
<b>HIGH STRENGTH COMPOSITE</b>	Injection Molded, Composite Parts are incredibly rugged, lightweight and strong. This is accomplished by combining high grade polymer materials with extremely high strength fiberglass fibers during manufacturing.	 <b>FISHING</b>	<b>FISHING BOATS:</b> Small Boats (generally constructed of aluminum) powered by outboard motors designed for freshwater fishing (length < 20').
<b>MARINE GRADE HDPE</b>	Marine Grade HDPE (High-Density Polyethylene) is an extremely tough, UV-resistant polymer that resists warp and is impervious to rot. An excellent material for maintenance free marine products able to endure the rigors of boating.	 <b>SAILBOAT</b>	<b>SAIL BOATS:</b> Sail powered craft of any size or shape. In terms of <b>GARELICK E&amp;I</b> products, usually in reference to boats between 14' and 60'.
<b>STAINLESS STEEL</b>	Stainless Steel is a high-chrome steel with very high strength and stiffness characteristics. Due to its superior corrosion resistance, hardware and products constructed out of Stainless Steel perform better in harsh marine environments.	 <b>ALL BOATS</b>	Many <b>GARELICK E&amp;I</b> accessories are compatible with a variety of boat sizes and styles; this icon accompanies these universal products.
<b>304 STAINLESS</b>	304 Stainless Steel is a specific grade of Stainless steel offering especially appealing material properties for marine applications such as: superior corrosion resistance, excellent mechanical properties and a bright chromium luster finish.	While these Boat Type Compatibility Icons are a quick and simple tool to help you find the perfect product for your boat, they are neither exclusive nor exhaustive. Always check the product specifications for exact sizing and compatibility information.	





# BOARDING LADDER COLLECTION

## INSTALLATION, MAINTENANCE & SAFETY

### SIZE MATTERS!

It is very important to choose the proper size ladder for location and correct fit. Ladders fitted that extend 2-3 rungs below the water's surface will provide the best comfort and function.

### EASY AS 1, 2, 3

Mounting hardware and step by step installation instructions are included with all Garellick ladders. Ladders feature standoffs to provide secure support against the transom or hull when in use.

### KEEP THAT BRIGHT FINISH!

Local weather conditions may contribute to minor corrosion. Ladder materials are not 100% free from corrosion attack. Fresh water rinsing and periodic cleaning with a mild abrasive will help to retain luster.

### IMPORTANT SAFETY TIP

Periodically check mounting hardware and re-tighten (due to normal operation and vibration hardware may loosen over time).

## SUPERIOR PRODUCTS DURABLE MATERIALS

- 304 STAINLESS**
- ANODIZED ALUMINUM FINISH**
- MARINE GRADE HDPE**
- HIGH STRENGTH COMPOSITE**
- MARINE GRADE VINYL**
- STAINLESS STEEL**
- HIGH TENSILE ALUMINUM**

LADDER SELECTION GUIDE		YACHT		CENTER		BASS		RUNABOUT		SAILBOAT		FISHING		DECK		PONTOON		INFLATABLE	DOCKS & RAFTS
		BOW OR GANGWAY ENTRANCE	TRANSOM OR SWIM PLATFORM	SIDE GUNWALE	TRANSOM OR SWIM PLATFORM	SIDE GUNWALE	TRANSOM OR SWIM PLATFORM	SIDE GUNWALE	TRANSOM OR SWIM PLATFORM	SIDE GUNWALE	TRANSOM	SIDE GUNWALE &/OR TRANSOM	SIDE GUNWALE &/OR TRANSOM	SIDE GATE &/OR TRANSOM					
SPORT/DIVER LADDERS	PG 7 - 9	●	●	●	●	●	●	●	●	●	●	●	●	●	●	●	●		
TRANSOM LADDERS	PG 10 - 14	●		●		●		●		●		●		●					
SIDE GUNWALE LADDERS	PG 15		●		●		●		●		●		●		●		●		
PONTOON LADDERS	PG 16 - 17	●	●	●	●					●	●						●		
LATCH TYPE LADDERS	PG 17																●		●
DOCK/RAFT LADDERS	PG 18																		●



# GULL WING STEP BOARDING LADDERS



## IN A CLASS OF ITS OWN. NOW EVEN LIGHTER, STRONGER AND EASIER TO USE!

- Already a recipient of the National Marine Manufacturer's Association prestigious Innovation Award, the Gull Wing Step Boarding Ladder has been further streamlined both in terms of construction and ease of use.



LADDER FOLDS COMPACTLY



99195



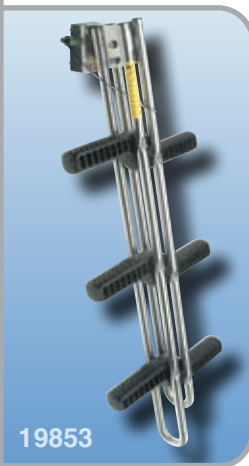
- Traction-molded steps provide safe and sturdy egress.
- Optional Storage Brackets (99194) make storage quick and easy.
- Quick-release locking pin, stainless steel hardware, and transom mounting bracket included with each ladder.
- Bracket design facilitates easy installation at various hull locations (see page 9 for a variety of installation accessories designed to accommodate nearly any situation).



99194



## GULL WING STEP LADDER - STAINLESS STEEL FRAME



19853

- Easy boarding for Swimmers or Divers with fins or heavy gear
- Steps fold in automatic unison and lock in position
- Dual Stainless Steel center vertical rails for stable support while boarding
- Heavy Duty - rated to 400 lbs. (181 kg) boarding weight
- Stainless Steel mounting bracket includes "Kick-up" feature if boat takes off with ladder in down position

U.S. PATENTS #6,755,146 AND D498,454



### SPECIFICATIONS :

These models include transom mounting bracket (99195: 5" x 3.75", 13 x 10 cm) Includes 1" thick poly spacer with locking pin and stainless steel face plate. 5/16" mounting hole dia.

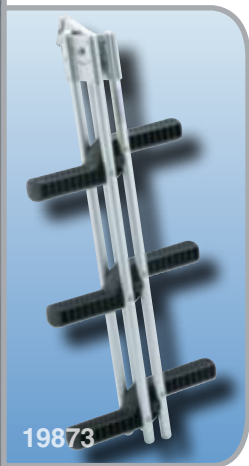
**19853** : 3 STEP MODEL : Stowed Dimensions: 4" x 4" x 47" (10x10x119cm), Length Deployed: 44" (112cm), Width: 15" (38cm)

**19854** : 4 STEP MODEL : Stowed Dimensions: 4" x 4" x 57" (10x10x145cm), Length Deployed: 57" (145cm), Width: 15" (38cm)

**99194** : Storage Brackets, sold in pairs, fits 19853, 19854, 19873, 19874

304  
STAINLESS

## GULL WING STEP LADDER - ANODIZED ALUMINUM FRAME



19873

- Strong, lightweight aluminum construction
- Easy boarding for Swimmers or Divers with fins or heavy gear
- Steps fold "parallel" in automatic unison for storage
- Dual aluminum center vertical rails for stable support while boarding.
- Optional storage brackets available for stowing folded ladder
- Comfortable Ergonomic Designed Step- Black reinforced nylon with traction molded curved surface.
- Heavy Duty- rated to 400 lbs. (181 kg) boarding weight
- Stainless Steel mounting bracket includes "Kick-up" feature if boat takes off with ladder in down position

U.S. PATENTS #6,755,146 AND D498,454

### SPECIFICATIONS :

These models include transom mounting bracket (99195: 5" x 3.75", 13 x 10 cm) Includes 1" thick poly spacer with locking pin and stainless face plate. 5/16" mounting hole dia.

**19873** : 3 STEP MODEL : Stowed Dimensions: 4"x4"x40" (10x10x102 cm), Length Deployed: 33.75" (86 cm), Width: 15" (38 cm)

**19874** : 4 STEP MODEL : Stowed Dimensions: 4"x4"x50.25" (10x10x128 cm), Length Deployed: 44" (112 cm), Width: 15" (38 cm)

**99194** : Storage Brackets, sold in pairs, fits 19853, 19854, 19873, 19874

HIGH TENSILE ALUMINUM ANODIZED ALUMINUM FINISH

## SPORT/DIVER LADDER



- Angled design for stair-like ease of boarding
- 2 1/4" diameter center vertical allows easy use with diving gear
- Oval steps with textured, painted surface
- Heavy duty - rated to 400 lbs. (181kg) boarding weight
- Designed for all vertical, horizontal, and breakaway mounting hardware options on page 9
- Stainless Steel Quick release Transom mounting bracket (99180) and ladder storage brackets (99193) included

### SPECIFICATIONS :

- 19802** : 2 Step - L: 28" (71cm), W: 13" (33cm)  
**19803** : 3 Step - L: 38" (97cm), W: 13" (33cm)  
**19804** : 4 Step - L: 48" (122cm), W: 13" (33cm)

HIGH  
TENSILE  
ALUMINUM CENTER



## STAINLESS STEEL SPORT/ DIVER LADDER



- Superior corrosion resistance electropolished stainless steel
- Easy boarding - for swimmers or divers with fins and heavy gear
- 1 3/4" diameter center post design - angled mount for stair-like usability
- Heavy duty - Rated to 400 lbs (181kg) boarding weight
- Comfortable non-skid step surface
- Designed for all vertical, horizontal, and breakaway mounting hardware options on page 9
- Stainless Quick Release Transom mounting bracket (99180) included
- Optional storage brackets (99196) available

### SPECIFICATIONS:

- 19833** : 3 Step - L: 37" (94cm), W: 14.5" (37cm)  
**19834** : 4 Step - L: 48" (122cm), W: 14.5" (37cm)

HIGH  
TENSILE  
ALUMINUM CENTER



## SPORT DIVER ACCESSORIES



99193



99196

### STORAGE BRACKETS

- **99193** : 2 1/4" diameter storage bracket for 19802, 19803, 19804, 19812 (sold in pairs)
- **99196** : 1 3/4" diameter storage bracket for 19833, 19834 (3 clips per package)

## BASS BOAT TRANSOM LADDER



19812

- Compact 2 step for low freeboard transoms
- Removable when fishing or underway quick release mount
- Easy to climb - angled stair-like design
- Oval steps with textured, painted surface
- Stainless Steel Quick Release mounting bracket (99180) included
- Optional storage brackets (99193) available
- 2 1/4" diameter center vertical

### SPECIFICATIONS:

- 19812** : 2 Step - L: 28" (71cm), W: 13" (33cm)

HIGH  
TENSILE  
ALUMINUM BASS



## SPORT/DIVER LADDER MOUNTING OPTIONS

### VERTICAL TRANSOM MOUNTING OPTIONS



**STANDARD TRANSOM MOUNTING BRACKET**  
99180

UNIVERSAL TRANSOM MOUNTING EXT. SHIM

99183

TRANSOM MOUNTING EXTENSION SHIM

99181

TRANSOM MOUNTING EXTENSION SHIM

99184



### HORIZONTAL PLATFORM MOUNTING OPTIONS



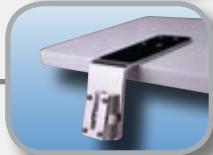
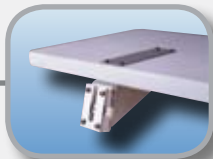
**STANDARD TRANSOM MOUNTING BRACKET**  
99180

UNDER PLATFORM MOUNTING BRACKET

99182

PLATFORM LADDER MOUNTING BRACKET

99187



### BREAKAWAY HINGE MOUNTING OPTIONS



**BREAKAWAY HINGE HARDWARE**  
99188\*

UNDER PLATFORM MOUNTING BRACKET

99182

PLATFORM LADDER MOUNT BRACKET

99187



\* Requires face plate and hinge pin which are included as part of 99180

MODEL	WIDTH	HEIGHT	DEPTH	NOTES
<b>99180</b>	2.75" (7cm)	3.62" (9cm)		Included with all sport/diver series ladders. 1" (3cm) thick poly spacer 10 degree angle, with lock and stainless steel face plate mounting bracket, mounting hole diameter: 5/16" (1cm)
<b>99181</b>	2.75" (7cm)	3.62" (9cm)	2" (5cm)	Extends ladder 2" farther from the transom. Used with face plate and 10 degree poly spacer (99180) included with ladder. Made of stainless steel, 2.75" W x 3.62" H (7x9cm)
<b>99182</b>	3.18" (8cm)	9.75" (25cm)		Allows ladder to be mounted on any poly, teak, fiberglass, or aluminum platform. Mounts underneath platform and includes a top plate which sandwiches platform in between brackets. Used with face plate and 10 deg poly spacer (99180) included with ladder
<b>99183</b>	2.75" (7cm)	3.62" (9cm)	3" (7.5cm)	Solid poly block that can be custom cut at the angle necessary to allow the ladder to be mounted at 15 degrees off vertical in special applications. Used with stainless face plate included with ladder.
<b>99184</b>	2.75" (7cm)	3.62" (9cm)	3" (7.5cm)	Extends ladder 3" farther from the transom. Used with face plate and 10 degree poly spacer (99180) included with ladder. Made of stainless steel, 2.75" W x 3.62" H (7x9cm)
<b>99187</b>	4" (10cm)	6.25" (16cm)	10" (25cm)	Especially designed for use on built-in platforms and euro-style boats. Utilizes 99180 included with ladder. Made of Stainless Steel. 15 degree angle.
<b>99188</b>	3.25" (8.3cm)	4.6" (12cm)	1.75" (4.5cm)	Compatible with Models' 19802, 19803, 19804, 19833, 19834 and 19812 mounting hardware. Made of anodized aluminum, the hinge features a breakaway pivot lock that shears a nylon bolt allowing the ladder to ride on top of the water. A replacement nylon bolt is included.



## EEz-In II INTEGRATED TRANSOM LADDER



Already available as standard equipment on some of America's best boats, the **EEz-In II** integrated transom ladder system is now offered in several styles to fit most OEM boarding applications.

A major step forward in boating safety and design, the **EEz-In II** is completely hidden from view when not in use. When needed, the ladder unlocks and slides aft and into the water in one fluid motion. This unique combination of stowability and simplicity helps provide boaters quick, easy and safe reboarding with no on board assistance.

### AN IMPRESSIVE DISAPPEARING ACT

The **EEz-In II** ladder has garnered incredible attention both in the board room and at the dock. One stunning example of this new ladder's chameleon nature is shown here on the Triton X-Series 215X Multispecies Fishing Boat.



IT IS IMPORTANT TO NOTE THAT THIS LADDER REQUIRES CUSTOM INSTALLATION AND IS ONLY AVAILABLE AS ORIGINAL EQUIPMENT AND SOLD TO BOAT BUILDERS ONLY. (U.S. PATENT #6,782,840)

## THE STATE OF THE ART

### OUT OF THE WAY, YET INSTANTLY AVAILABLE : THE LADDER IN THE TRANSOM

This Patented "invisible" ladder system can be integrated stylistically into even the sleekest of hull shapes, opening entirely new avenues in safety and design.



### INVISIBLE

When stowed, the **EEz-In II** Boarding Ladder sits fully within the transom of the boat. The only component of this revolutionary boarding system visible is a simple and stylish faceplate with an integrated locking and release feature.

### QUICK AND EASY

From either on board or in the water, the **EEz-In II** deploys instantly and easily with a simple one-handed tug on the release pin. Once out of its storage tube, the ladder's traction molded steps simply fold out, creating a sturdy and convenient series of steps for re-boarding.



### VERSATILE

There is an **EEz-In II** for just about any size and shape boat. Available in 3 and 4 step lengths, in both manual and semi-automatic configurations this ladder may be the most important feature you DON'T SEE.



### SPECIFICATIONS :

#### COMPACT OPERATION :

Steps open and close independently

#### SEMI-AUTO OPERATION :

All steps on common side open and close simultaneously

**19902-30** : 3 Step Compact Ladder

**19902-34** : 3 Step Semi-Automatic Ladder

**19902-44** : 4 Step Semi-Automatic Ladder

### AWARD WINNER



The **EEz-In II** integrated transom ladder system has won multiple awards, including a National Marine Manufacturers Association Innovation Award.

U.S. PATENT #6,782,840



STAINLESS STEEL HIGH TENSILE ALUMINUM



## OVER PLATFORM TELESCOPING LADDER WITH GRAB HANDLE



19619-29

- Steps – fold out and over, telescope down easily
- Compact stowage – steps fold over flat on platform
- Flat poly treads for increased comfort
- Standard folding gudgeons
- Electropolished 304 stainless steel
- Bungee cord securing strap included
- Nylon bushings between ladder sections prevent inadvertent deployment when flipping ladder into the water
- Grab handle eases boarding
- Available in 3 or 4 step models
- NOTE: Not available in retail POP packaging

### SPECIFICATIONS :

**19619-29** : 3 Steps, L deployed: 34.5" (88cm), L Stowed: 14.5" (37cm), overall height: 1.5" (4cm), W 11.5" (3cm), L of gudgeons 7" (15cm).

**19620-34** : 4 steps, L deployed: 45" (114cm), L stowed: 15.5" (40cm), overall height: 1.75" (4.4cm), W 12" (30.5cm), L of gudgeons 8" (20.3cm).

**304**  
STAINLESS ALL BOATS

## 4 STEP HINGED LADDER



19620-25

- Innovative hinge design positions ladder away from hull and rub rail when in use
- Ladder pivots on a "hinge" style gudgeon, then folds down
- Nylon bushings between ladder sections prevent inadvertent deployment when flipping ladder into the water
- Ladder stows compactly- ideal for use in bow applications or top of swim platforms
- Bungee cord securing strap included
- Electropolished 304 Stainless Steel
- Flat poly treads for increased comfort
- May not be suitable for all aftermarket retrofit applications
- NOTE: Not available in retail POP packaging

### SPECIFICATIONS :

**19620-25** : 4 steps, L deployed 45" (114.3cm), L stowed: 15.25" (39cm), overall height: 1.75" (4cm), W 12.6" (32cm), L of gudgeons 10.5" (27cm).

**304**  
STAINLESS ALL BOATS

## COMPACT *EEz-In* II TRANSOM LADDER



19700

- Helps provide Unassisted Re-boarding
- Invisible, Quick & Easy and Readily Accessible
- Complete ladder stows within transom and hull
- 3 steps open & close independently for ease of boarding
- Quick release ring w/ self-locking latch deploys ladder from storage
- Anodized aluminum channel body deploys out at 15 degree angle

### SPECIFICATIONS :

**19700** : 3 Step Compact Ladder - 32.5" (83 cm) length, 2" (5cm) square channel body; transom mount plate 5"H x 4.5"W x 1" D (13 x 11 x 3 cm)

**U.S. PATENT #6,782,840**



*New*

**HIGH STRENGTH COMPOSITE** **HIGH TENSILE ALUMINUM** **304 STAINLESS** ALL BOATS

## OVER PLATFORM TELESCOPING LADDER



19615-61

- Steps – fold out and over, telescope down easily
- Compact stowage – steps fold over flat on platform
- Flat poly treads for increased comfort
- Standard folding gudgeons
- Electropolished 304 stainless steel
- Bungee cord securing strap included
- Nylon bushings between ladder sections prevent inadvertent deployment when flipping ladder into the water
- Available in either 2, 3 or 4 step models

### SPECIFICATIONS :

**19615-61** : 2 steps, L deployed: 23.5" (60cm), L stowed: 13.5" (34cm) Overall height 1.25" (3cm), W 11.25" (29cm), L of gudgeons 6" (15cm)

**19616-61** : 3 steps, L deployed: 34.5" (88cm), L stowed: 14.5" (37cm) Overall height 1.5" (4cm), W 11.50" (29cm), L of gudgeons 6" (15cm)

**19617-61** : 4 steps, L deployed: 45.5" (116cm), L stowed: 15.5" (40cm) Overall height 1.75" (4cm), W 12" (30.5cm), L of gudgeons 6" (15cm)

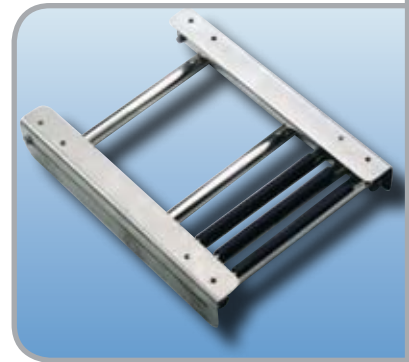
**304**  
STAINLESS ALL BOATS

## UNDER PLATFORM SLIDING LADDER



19623-82

- Designed for under platform use - stows easily and compactly
- Ideal for installations under swim platforms or under the deck on bow or side of pontoon boats
- Nylon bushings between ladder sections prevent inadvertent deployment when flipping ladder into the water
- Ladder stows compactly within its own length
- Bungee cord securing strap included
- Electropolished 304 Stainless Steel
- Flat poly treads for increased comfort
- May not be suitable for all aftermarket retrofit applications
- NOTE: Not available in retail POP packaging



### SPECIFICATIONS :

**19623-82** : 3 Steps, L deployed: 34.5" (88cm), L stowed: 15" (38cm), overall height: 2.5" (6.4cm), W: 11.5" (29cm), L of gudgeons: 15" (38cm)

304  
STAINLESS ALL BOATS

## OUT OF SIGHT UNDER PLATFORM TELESCOPING LADDER



19622-61

- Steps telescope down easily
- Ladder slides up, under platform for stowage
- Flat poly treads for increased comfort
- Mounting hardware and securing strap included
- Self-locking angled support bracket
- Electropolished 304 Stainless Steel
- Bungee cord securing strap included



### SPECIFICATIONS :

**19622-61** : 2 steps, L deployed: 23.25" (59cm), L stowed: 13.5" (34cm) Overall height 2.5" (6cm), W 11.38" (29cm)

**19623-61** : 3 steps, L deployed: 34.5" (88cm), L stowed: 14.5" (37cm) Overall height 2.5" (6cm), W 11.63" (30cm)

304  
STAINLESS ALL BOATS

## TRANSOM PLATFORM WITH TELESCOPING LADDER



19536

### ...FOR BOATS WITH OUTBOARD MOTORS

- Durable HDPE platform is pre-drilled for easy assembly
- Mounts at 10 degree angle on transom
- Ladder Steps telescope down easily
- Ladder slides up and under platform for stowage
- Flat Poly treads for extra comfort
- One stainless rail and one underside support rail (both 1" (3cm) diameter, Reversible)

#### SPECIFICATIONS :

**19536** : 18" W x 15.5" D x .75" T (46x39x2cm).  
Height above platform: 12.5" (32cm).  
2 steps L deployed: 22.75" (58cm), L stowed: 17" (43cm), Overall height: 5" (13cm), W: 13.5" (34cm).

304 STAINLESS MARINE GRADE HDPE RUNABOUT CENTER

## SWIM PLATFORM WITH FOLD DOWN LADDER



19535

### ...FOR BOATS WITH OUTBOARD MOTORS

- Mounts at 10 degree angle on transom
- Durable HDPE platform is pre-drilled for easy assembly
- Stainless steel hardware
- 1" (3cm) diameter stainless steel
- One stainless rail and one underside support rail (both 1" (3cm) diameter, Reversible)

#### SPECIFICATIONS :

**19535** : With 1 step fold-down ladder, 13" L x 14.5" W (33x37cm). Platform: 18" W x 15.5" D x .75" T (46x32x2cm). Rail height above and below platform: 12.5" (32cm)

**19530** : Platform with support rails

304 STAINLESS MARINE GRADE HDPE RUNABOUT CENTER

## TRANSOM PLATFORM WITH TELESCOPING LADDER



19546

### ...FOR BOATS WITH I/O MOTORS

- Durable HDPE platform is pre-drilled for easy assembly
- Mounts at 10 degree angle on transom
- Ladder Steps telescope down easily
- Ladder slides up and under platform for stowage
- Flat Poly treads for extra comfort
- Two 1" (3cm) diameter stainless wrap around rails

#### SPECIFICATIONS :

**19546** : 18" W x 15.5" D x .75" T (46x39x2cm). Height above platform: 12.5" (32cm). L deployed: 22.75" (58cm), L stowed: 17" (43cm). Overall height: 5" (13cm), W: 13.5" (34cm)

304 STAINLESS MARINE GRADE HDPE RUNABOUT CENTER

## SWIM PLATFORM WITH FOLD DOWN LADDER



19545

### ...FOR BOATS WITH I/O MOTORS

- Mounts at 10 degree angle on transom
- Durable HDPE platform is pre-drilled for easy assembly
- Stainless steel hardware
- 1" (3cm) diameter stainless steel
- Two 1" (3cm) diameter stainless wrap around rails

#### SPECIFICATIONS :

**19545** : With 1 step fold-down ladder, 13" L x 14.5" W (33x37cm). Platform: 18" W x 15.5" D x .75" T (46x39x2cm). Rail height above platform: 12.5" (32cm)

**19540** : Platform with support rails

304 STAINLESS MARINE GRADE HDPE RUNABOUT CENTER

## STAINLESS STEEL TRANSOM LADDER STEP



19612

- Fold down ladder mounts to transom
- Features easier boarding with 25 degree angle in deployed position
- Step folds up and self locks at two positions; vertical or 30 degree angle to accommodate back trolling transom splash guards
- Flat poly tread step for added comfort
- 7/8" (2 cm) diameter stainless steel

### SPECIFICATIONS :

**19612** 1 Step, L deployed 15" (38 cm), L stowed vertical 14.5" (37 cm), protrudes 7" (18 cm) at 30 degree angle in up position. Overall W 14.5" (37 cm)



VERTICAL

30 DEG

304  
STAINLESS FISHING

## STAINLESS STEEL TRANSOM PLATFORM LADDER STEP

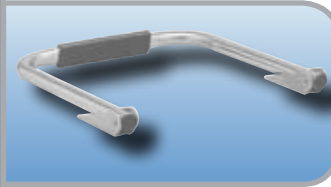


19512

- Fold down ladder mounts to transom platform
- Step folds up onto platform for flat stowage
- Easy to install, includes 4" gudgeons and securing strap
- Fits 19530 and 19540 swim platforms (Page 13)

### SPECIFICATIONS :

**19512** step, L 13" (33cm), W 14.5" (37cm)



304  
STAINLESS RUNABOUT FISHING

## COMPACT STAINLESS STEEL TRANSOM LADDER



19513

- Designed for mounting on limited area, 3.5" x 12.5" (9x32cm)
- Ladder stows upright against transom
- Easy to install
- Includes securing strap
- Flat poly treads are attached to steps for comfort
- 1" (3cm) diameter stainless steel

### SPECIFICATIONS :

**19513** : 2 step, L deployed 15" (38cm), L stowed 15.5" (39cm), Overall height 15.5" (39cm), Overall W 14.5" (37cm)



304  
STAINLESS ALL BOATS

## COMPACT TWO-STEP TRANSOM LADDER



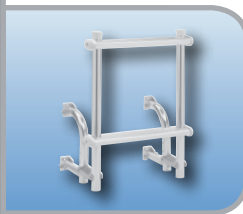
18017

- For use on small boat transoms - mounts 6.5" x 12" (7x31cm) area
- Folds down for easy boarding
- Fits most angled or curved transoms
- Stainless steel fasteners and securing strap included
- Durable 1" (3cm) diameter anodized aluminum tube.
- Comfortable non-slip oval-shaped anodized aluminum steps.

### SPECIFICATIONS :

**18017** : 2 step, L Down: 15" (38cm), H Up: 15" (38cm), W 12" (31cm)

**18018** : 3 step, L Down: 25" (64cm), H Up: 25" (64cm), W 12" (31cm)



ANODIZED  
ALUMINUM  
FINISH RUNABOUT FISHING

## TELESCOPING STAINLESS STEEL GUNWALE *EEz-In* HOOK LADDER



06131

- Steps telescope closed and hooks fold flat for compact storage
- Compact, collapsible design
- Comfortable contour black traction molded poly steps
- Thick 1" (3cm) diameter electropolished stainless steel tubing - 250 lb. capacity
- Thick vinyl covered 11" folding hooks
- One piece all aluminum adjustable standoffs with cushioned tips
- Includes securing strap

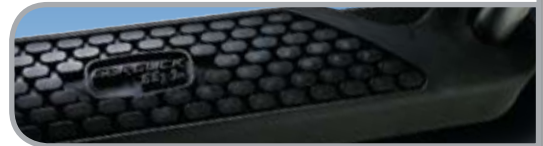
### SPECIFICATIONS :

**06131** : 3 Step, 10.25" (26cm) hook, 21" (53cm)/39" (99cm) L stowed/ deployed, 16" (41cm) W

**06141** : 4 step, 10.25" (26cm) hook, 32" (81cm)/51" (130cm) L stowed/ deployed, 16" (41cm) W



06131 : FOLDED



304  
STAINLESS



CENTER

DECK

RUNABOUT

FISHING

## THE ORIGINAL GUNWALE *EEz-In* HOOK LADDER



05041

- Durable 1" (3cm) diameter Aluminum tubing
- Comfortable and sturdy white traction molded plastic steps
- Thick vinyl covered hooks fold flat for storage
- All aluminum adjustable standoffs with cushioned tips

### SPECIFICATIONS :

#### 3 STEP MODELS :

**05037** : 7" (18cm) hook, 36" (91cm) L, 15" (38cm) W

**05031** : 11" (28cm) hook, 36" (91cm) L, 15" (38cm) W

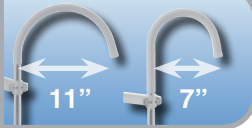
#### 4 STEP MODELS :

**05047** : 7" (18cm) hook, 48" (122cm) L, 15" (38cm) W

**05041** : 11" (28cm) hook, 48" (122cm) L, 15" (38cm) W

### HOOK SIZING GUIDELINES:

- 7" (18cm) Hooks for narrow decks on smaller boats, hooks fold flat for stowage
- 11" (28cm) Hooks for universal fit on most size decks, hooks fold flat for stowage



HIGH  
TENSILE  
ALUMINUM



CENTER

DECK

RUNABOUT

FISHING

## STAINLESS STEEL GUNWALE *EEz-In* HOOK LADDER



06031

- Comfortable contour black traction molded poly steps
- Thick 1" (3cm) diameter electropolished stainless steel tubing - 250 lb. capacity
- Thick vinyl covered 11" hooks fold flat for storage
- One piece all aluminum adjustable standoffs with cushioned tips.
- Hooks fold flat for compact storage

### SPECIFICATIONS :

**06031** : 3 Step, 11" (28cm) hook, 36" (91cm) L, 16" (41cm) W

**06041** : 4 Step, 11" (28cm) hook, 48" (122cm) L, 16" (41cm) W



304  
STAINLESS



CENTER

DECK

RUNABOUT

FISHING

GARELICK  
*EEz-In*

## REMOVABLE FOLDING PONTOON BOARDING LADDER

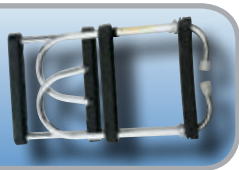


12350

- Folds down to 4 steps; hooks fold and ladder stows in locker underneath furniture
- Securing strap included
- Sturdy design with overrail hooks for easy boarding
- Lightweight anodized aluminum 1" (3cm) diameter resists corrosion
- Attaches easily to deck at side gate for temporary or permanent mounting with included Shur-Loc catches (76000)
- Comfortable contour black traction molded steps.

### SPECIFICATIONS :

**12350** : 4 step, Fold Down L: 30"+13" (76cm+33cm), W: 16" (41cm)



HIGH STRENGTH COMPOSITE

ANODIZED ALUMINUM FINISH



## TELESCOPING STAINLESS STEEL PONTOON BOARDING LADDER

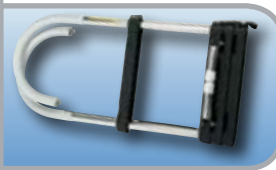


12340

- Easy to Board - Easy to Stow - Easy to Maintain
- Electropolished Stainless Steel Tubing (250 lb. capacity)
- Compact design allows ladder to be stowed in lockers underneath pontoon furniture
- Comfortable black contour traction molded steps.
- One piece all aluminum adjustable standoffs with cushioned rubber tips
- Attaches easily to deck for temporary or permanent mounting with included Shur-Loc catches (76000)

### SPECIFICATIONS :

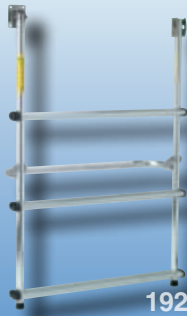
**12340** : 4 step, L - stowed: 32" (82cm), L - deployed: 51" (130cm), W 16" (41cm)



ANODIZED ALUMINUM FINISH



## "SWINGER" PONTOON BOARDING LADDER



19250

- Permanent mount at side gate
- Stows flat against railing - eliminates storage problems
- Swings over and folds down for use
- Unique self-locking brackets - lock ladder in place
- Cushioned standoffs included - support ladder at pontoon "logs"
- Easy to install - stainless steel hardware and securing strap included
- Durable double walled 1" (3cm) diameter Anodized aluminum tube.
- Comfortable non-slip oval anodized aluminum steps.

### SPECIFICATIONS :

**19250** : 3 step L: 36" (91cm), W: 24" (61cm)

U.S. PATENT #5,117,940



ANODIZED ALUMINUM FINISH



## FOLDING PONTOON TRANSOM BOARDING LADDER



12360

- Permanent mount at transom, ideally at stern gate door
- Folds down for easy boarding
- Comfortable black contour traction molded steps
- Durable 1" (3 cm) diameter Anodized aluminum tube
- Includes securing strap and aluminum standoffs to abut end of pontoon log

### SPECIFICATIONS :

**12360** 1 - 3 Steps, Fold Down L: 14" + 21" (36 + 53cm), OL: 35" (89cm), W: 16" (41cm), dimensions from deck to standoff: 12" (30cm)  
Deck mount U channel L: 13.25 (34cm), Over rail Hook Height H: 10.5" (27cm), Standoff Length: 4.25" (11cm)

**12370** 1 - 4 Steps, Fold Down L: 14" + 32" (36 + 81cm), OL: 46" (117cm), W: 16" (41cm), dimensions from deck to standoff: 12" (30cm)



ANODIZED ALUMINUM FINISH

HIGH STRENGTH COMPOSITE



## PONTOON SWIM LADDER



15240

- Use at side gate or transom
- Attaches easily to deck with included Shur-loc catches
- Vinyl sleeves on verticals protect pontoon
- Hooks fold flat for stowage
- Durable 1" (3cm) diameter Anodized aluminum tube.
- Comfortable white traction molded poly steps.

### SPECIFICATIONS :

**15230** : 3 step, L 36" (91cm), W 15" (38cm)

**15240** : 4 step, L 50" (127cm), W 15" (38cm)



ANODIZED ALUMINUM FINISH  PONTOON

## LATCH TYPE BOARDING LADDER



10049

- Overrail Hook Series - Latches mount to deck
- For small cruisers, runabouts, and sailboats
- Shur-loc catch brackets (76000) allow for permanent or removable mounting
- Compact stowage - hooks and cushioned standoffs fold flat
- Durable 1" (3cm) diameter Anodized aluminum tube.
- Comfortable molded white poly step

### SPECIFICATIONS :

**10049** : 4 step, L: 39" (99cm), W: 13.5" (34cm);  
Overrail hook 13" (33cm) high



76000

### SHUR-LOC LADDER CATCHES

- Bracket mounts to hull or deck for attaching **GARELICK EE3-In** latch type boarding ladders and cockpit steps
- Allows permanent or temporary mounting
- Stamped stainless steel self-locking design

### SPECIFICATIONS :

**76000** : 2.5" H x 1.75" W (6x4cm) - Packaged in pairs

HIGH TENSILE ALUMINUM  CENTER  RUNABOUT  SAILBOAT

## PONTOON FOLDING DECK LADDER



12150

- Folds down for easy boarding
- Folds and stows in locker underneath pontoon furniture
- Stainless 6" (15cm) gudgeons attach to deck with included Shur-loc catches (76000)
- Cushioned standoff abuts pontoon "log"
- Durable 1" (3cm) diameter Anodized aluminum tube.
- Comfortable white traction molded poly steps
- Includes securing strap

### SPECIFICATIONS :

**12150** : 4 step, Fold down L: 24" + 18" (61+46cm), W: 15" (38cm)



ANODIZED ALUMINUM FINISH  PONTOON

## INFLATABLE BOAT LADDER



13003

- Contour design hugs the hull for side boarding
- Attaches to floorboards with 3/8" (.95cm) line and swivel snap
- Vinyl sleeve will not mar hull fabric
- Durable 1" (3cm) diameter Anodized aluminum tube.
- Comfortable molded white poly step.

### SPECIFICATIONS :

**13002** : 2 steps, 17" (43cm) L, 13.5" (34cm) W

**13003** : 3 steps, 33" (84cm) L, 13.5" (34cm) W



ANODIZED ALUMINUM FINISH  HIGH STRENGTH COMPOSITE

**GARELICK**  
EE3-In

## ANODIZED ALUMINUM DOCK/RAFT LADDER - FIXED MODEL



15330

- 10 degree angled design provides easier boarding
- Anodized aluminum heavy walled 1" (3cm) diameter tube construction
- Comfortable anodized aluminum traction tread curved step surface
- Wide Track 18" ladder with full 16" (41cm) width steps
- Dual handrails 15" (38cm) height and extends 14" (36cm) deep onto dock
- Optional quick release pins allow easy removal for seasonal storage or periods of non-use
- Assembly is quick and easy with all stainless steel hardware
- 300 lb. (145 kilos) boarding weight
- Extruded aluminum curved step 4" (10cm) deep
- Shipped KD

### SPECIFICATIONS :

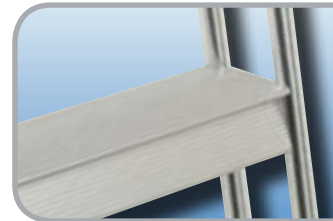
**15330** : 3 Step Ladder, 36" (91cm) from Dock/Raft deck

**15340** : 4 Step Ladder, 48" (122cm) from Dock/Raft deck

**15350** : 5 Step Ladder, 60" (152cm) from Dock/Raft deck

**99204** : Optional Anodized aluminum quick release hardware. Allows easy removal for storage (SOLD SEPARATELY)

**U.S. PATENT #D499,190**



99204

STAINLESS STEEL ANODIZED ALUMINUM FINISH

## ANODIZED ALUMINUM DOCK/RAFT LADDER - FLIP UP MODEL



15740

- Innovative design flips up and out of the water to prevent marine growth
- 10 degree angled design provides easier boarding
- Anodized aluminum heavy walled 1" (3cm) diameter tube construction
- Comfortable anodized aluminum traction tread curved step surface
- Wide Track 18" ladder with full 16" (41cm) width steps
- Dual handrails 15" (38cm) height and extends 14" (36cm) deep onto dock
- Quick release pins allow easy removal for seasonal storage or periods of non-use
- Assembly is quick and easy with all stainless steel hardware
- 300 lb. (145 kilos) boarding weight
- Extruded aluminum curved step 4" (10cm) deep
- Shipped KD

### SPECIFICATIONS :

**15730** : 3 Step Ladder, Extends 40.75" (104cm) from deck surface to bottom of legs in down position. Stands 47.75" (122cm) above deck surface when flipped up

**15740** : 4 Step Ladder, Extends 52.75" (134cm) from deck surface to bottom of legs in down position. Stands 59.75" (152cm) above deck surface when flipped up

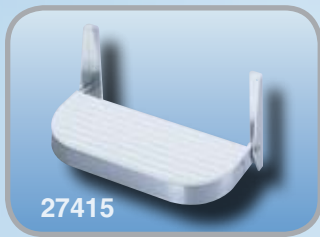
**15750** : 5 Step Ladder, Extends 64.75" (165cm) from deck surface to bottom of legs in down position. Stands 71.75" (183cm) above deck surface when flipped up

**U.S. PATENT #D499,190**

**ADDITIONAL PATENTS PENDING**



STAINLESS STEEL ANODIZED ALUMINUM FINISH



27415

### ROUNDED WHITE POLYMER FOOTREST

- Heavy duty wrap-around aluminum extrusion with brushed Anodized aluminum finish
- High Density Polyethylene traction grooved step

#### SPECIFICATIONS :

27415 : 7.5" H x 15" W x 8.25" D (19x38x21cm)



27316

### ROUNDED WHITE VINYL FOOTREST

- Heavy duty wrap around aluminum extrusion with brushed anodized aluminum finish and white vinyl treads

#### SPECIFICATIONS :

27316 : 7.5" H x 15" W x 8.25" D (19x38x21cm)



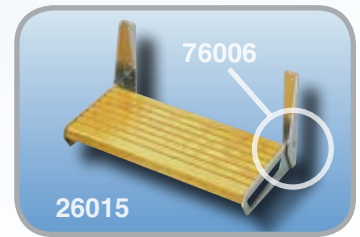
27315

### BLACK VINYL FOOTREST

- Durable 1" (3cm) black Anodized aluminum uprights and stamped support brackets with black vinyl treads.

#### SPECIFICATIONS :

27315 : 7.5" H x 15" W x 8.25" D (19x38x21cm)



26015

### OAK FOOTREST

#### SPECIFICATIONS :

26015 : 15" (38cm) W  
 26018 : 18" (46cm) W  
 76006 : Polished aluminum folding brackets only (pr).  
 76007 : Anodized aluminum folding brackets only (pr).  
 7.5" H x 8.25" D (19x21cm) Stamped aluminum, 7.5" H x 8.25" D (19x21cm)



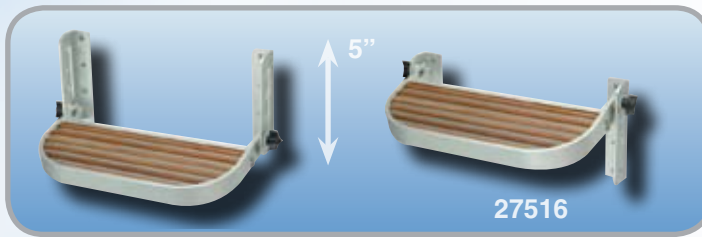
27515

### TEAK FOOTREST

- Heavy duty wrap around aluminum extrusion with brushed Anodized aluminum finish and teak inserts.

#### SPECIFICATIONS:

27515 : 7.5" H x 15" W x 8.25" D (19x38x21cm)



27516

### ADJUSTABLE FOOTREST

- Heavy duty wrap around aluminum extrusion with brushed anodized aluminum finish and teak treads
- Provides added comfort for multiple users at helm
- 4 positions - provides 5" of vertical height adjustment
- Angled 18 degrees down for more comfort when resting on stepping surface
- Traction grooved step surface with teak inserts
- Rounded corner design helps eliminate scraping ankles

#### SPECIFICATIONS :

27516 : 7.5" H x 15" W x 8.25" D (19x38x21cm)



99000

### ALUMINUM LADDER STANDOFFS

- Supports ladders against hull
- Fits traction molded poly step (26306)
- Cushioned tip - Helps protect hull

#### SPECIFICATIONS :

99000 : 4.5" (11cm) L, pair  
 99001 : 9.5" (24cm) L, pair



76000

### SHUR-LOC LADDER CATCHES

- Bracket mounts to hull or deck for attaching **GARELICK E&I-In** latch type ladders and cockpit steps
- Allows permanent or temporary mounting
- Stamped stainless self-locking design
- Packaged in pairs
- 2.5" H x 1.75" W (6x4cm)

#### SPECIFICATIONS :

76000 : 2.5" H x 1.75" W (6x4cm)



25022

### OAK COCKPIT STEPS

- For stepping up or down from cockpit of all types of cruisers
- Attaches to inside of coaming with stainless steel shur loc catches included (76000)
- Durable 1" (3cm) Anodized aluminum uprights and stamped support brackets.
- Varnished oak traction grooved steps

#### SPECIFICATIONS :

DIMENSIONS : 16" W x 5.5" D (41x14cm)  
 25028 : H: 28" (71cm)  
 25022 : H: 22" (56cm)



25122

### ALUMINUM COCKPIT STEPS

- For stepping up or down from cockpit of all types of cruisers
- Attaches to inside of coaming with included stainless steel shur loc catches (76000)
- Durable 1" (3cm) Anodized aluminum uprights and stamped support brackets.
- High density, polyethylene traction grooved steps

#### SPECIFICATIONS :

DIMENSIONS : 15" W x 5.5" D (41x14cm)  
 25128 : H: 28" (71cm)  
 25122 : H: 22" (56cm)



**GARELICK**  
*EEz-In*

# MARINE SEATING COLLECTION

Garelick built their first helm seat specifically designed for boats back in 1955! This pioneering product not only improved how boaters sat to pilot their craft, it provided the first common sense approach to seating comfort aboard a boat. Thus began a tradition of quality marine seating at Garelick.

This tradition has persevered through the past half century, driving the development of hundreds of seating options and interiors and serving to create a line of *GARELICK EEz-In* boating products that are consistently among the most reliable, stylish and innovative in the recreational marine industry.



CIRCA  
1955

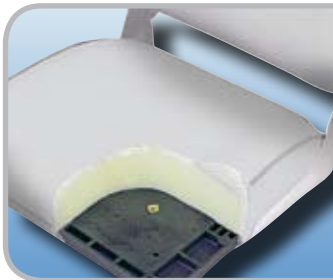
## TOP QUALITY SEATING FOR BOATS OF ALL TYPES

### VARIETY AND PREMIUM QUALITY

From Fishing Boats to Yachts, Helm Chairs to Lounges, Garelick's comprehensive collection of Marine Seating options satisfy the most discriminating customers year after year.

### BUILT TO LAST!

All of Garelick's seating options are constructed of the finest weatherproof, marinated materials. Attention to detail, premium materials and unparalleled craftsmanship combine to create seats that weathers well in the harshest environment.



### FULLY INTEGRATED SEATING SYSTEMS

By combining industry leading seating technology with state of the art seat hardware and manufacturing, the *GARELICK EEz-In* brand offers fully adjustable, rock-solid seating solutions for most any application.

## SUPERIOR PRODUCTS DURABLE MATERIALS

304  
STAINLESS

ANODIZED  
ALUMINUM  
FINISH

MARINE  
GRADE  
HDPE

ABYC  
H31

MARINE  
GRADE  
VINYL

STAINLESS  
STEEL

HIGH  
TENSILE  
ALUMINUM

# COMMANDER YACHT HELM SEATING



Our "signature offering" in a plush and luxurious helm/pilot seat. This newest seat from **GARELICK EEz-In** is designed to OEM boat builder upholstery and frame standards. Features, fit and finish and the attention to detail are unprecedented. The true comfort found sitting on top of this throne will make any Captain feel like a King!

This complete seating system includes our Commander 4.0 Series (p. 31) Pedestal Seat

Yacht hardware with fore and aft slide, 360° rotation and 9" of gas rise vertical adjustment.

## PREMIUM MATERIALS, QUALITY FINISHES

Years of experience in building top end upholstery for some of the best boat builders qualifies us to build this seat. The best components available such as high grade aluminum, stainless steel, vinyls, foam, and other internal parts are used. All of this compliments the innovative thought and quality craftsmanship that goes into a seat of this caliber.

## EEz-In COMMANDER II YACHT HELM SEATING



### COMPACT VALUE WITH UPSCALE STYLING

- Premium 30 oz. marine grade vinyl with UV and mildew inhibitor
- Supportive cushions over internal welded aluminum seat frame
- Thick and firm 1.8 lb. density foam for true longer lasting comfort
- Built in head rest
- 2 Position recline position – finger tip control
- Arms flip out of way for easy egress/ingress
- Flip up bolster for back support when standing while piloting
- Designed to mount with Garelick/EEz-In Millennium, Mid-Range and Commander Pedestal Seat Bases and Fore/Aft Seat Slides
- Made in U.S.A.

**48820** Overall Dimensions with Arms – W: 23.5" (57 cm), Seat only dimensions – W: 19" (48 cm), H: 30" (76 cm), D: 27" (69 cm), with lean to bolster in up position: 20" (51 cm)

**COLORS** 01 – White, 15 – Light Almond/Tan



## COMMANDER YACHT SEATING- TOP OF THE LINE

### EVERY FEATURE IMAGINABLE IN THIS NEW ERA OF MARINE SEATING

The Modular Internal Frame of the Commander Helm Seat provides a rock solid foundation for a feature-laden, comfort-driven experience. This premium seating system is perfectly suited for use in the wheelhouses of the world's finest yachts.



### COMFORT

- Premium 30 oz. marine grade white vinyl (with UV and mildew) inhibitor made into supportive cushions over internal suspension seat.
- Thick and firm 1.8 lb. density foam supports the upholstery for true longer lasting comfort.

### ADJUSTABILITY

- 4 Position adjustable articulating back and arm rests, arm adjusts parallel to seat back
- Arms flip out of way for easy egress/ingress
- Flip up foot rest, adjustable height with traction diamond surface
- Flip up bolster feature for back support when standing while piloting

### ROCK-SOLID, WOBBLE-FREE - 4.0" DIAMETER SERIES PEDESTAL

- Free Swivel 360° or lock at 45° increments
- 6" fore and aft travel slide, locks on 1" increments
- 9" vertical height – gas rise adjustment
- 4" diameter anodized aluminum stanchion, 12" diameter base casting

### SPECIFICATIONS :

Gas rise height 23 – 32" Seat Dimensions : W: 27" (69cm), H: 52" (132cm), D: 25.5" (65cm) with bolster in the down position, 21.5" (55cm) with bolster in the up position

**48810** : Commander Seat, Pedestal, and Foot Rest

**48815** : Commander Seat and Pedestal



## 930 PREMIUM BOLSTER FLIP-UP SEAT "OCEAN ELITE" SERIES



48930

- The Plushest Center Console or Fly bridge Seat that **GARELICK EE3-In** Builds!
- Built-In Leaning Post – Front Section of seat cushion flips-up
- Heavily padded vertical surface area gives excellent support to legs
- Beautiful White Quilted Marine High Grade Upholstery
- Compatible with **GARELICK EE3-In** 2.875 or 3.5 Mid-Range Seat Pedestal Hardware
- UV inhibitor with water resistant foam cushions

### SPECIFICATIONS :

**48930** : Overall Dimension with arms : W:25" (64 cm), Seat only Dimensions : W: 18" (46cm), H: 21" (53 cm), D: 23" (58cm). Height with bolster in "Up" position: 16" (41cm)

**COLORS** : 01 - White



ANODIZED ALUMINUM FINISH



## 935 "OCEAN ELITE" LOVE/HELM SEAT



48935

- The Plushest Center Console or Fly bridge Seat that **GARELICK EE3-In** Builds!
- Beautiful white quilted high grade marine vinyl
- Back storage netting pocket
- Unsurpassed cushioned comfort, for mounting with Tandem Seat Slides; on a box or double pedestal

### SPECIFICATIONS :

**48935** : W: Overall 34" (86cm), seat cushion 28" (71cm), D: 24" (61cm), H: 21.75" (55cm)

**COLORS** : 01 - White



ANODIZED ALUMINUM FINISH



## 490 ULTIMATE SPORTFISHING/ HELM CHAIR AND PEDESTAL



48490

### CLASSIC ARM CHAIR COMFORT

- All weather white seat support frame with ladder back
- Ideal at fly bridge, helm station, or fishing
- High density, white polyethylene seat and back, thick, removable white cushions snap to frame, thru-bolted hardware; tough anodized aluminum extrusions, stainless steel fasteners

### SPECIFICATIONS :

**48490** : Seat with 15" (38cm) high anodized base. W: 26.5" (97cm), D: 17.5" (44cm), H: 20" (51cm)

**99068** : White padded arm rest covers - pair (see Page 23)

**99069** : Optional snap on back cushion

**COLORS** : 01 - White



ANODIZED ALUMINUM FINISH



## 485 ULTIMATE SPORT FISHING SEAT WITH QUAD BASE



48485

- Classic arm chair comfort!
- High density polyethylene seat and back substrates
- Thick back cushion for greater back support. Modified seat cushion adds 1 1/2" of extra pitch front to back for maximum comfort
- Removable cushions snap to frame
- Through bolted hardware, tough anodized extrusions and stainless steel fasteners
- Includes chrome plated brass gimbal
- Stable quad base comes with 360° swivel and locking rod. Base made from 1" diameter anodized aluminum with HDPE platform and rubber chair tips

### SPECIFICATIONS :

**48485** : W: 26" (66cm), D: 20.5 (52cm), H: 32" (81cm)

**75156** : Quad Base Only : 20"x20"x13" (51x51x33 cm)



## 970 CONTEMPORARY HELM SEAT



48970

- Latest styling and comfort – acrylic molded arms and backs
- Flip-up bolster for piloting seated or leaning
- Two-tone white vinyl with quilted almond center
- HDPE Seat Support to accept Millennium and Tandem Swivel and fore and aft slide hardware

### SPECIFICATIONS :

**48970** : W: 24" (61cm), D: 29.75" (76cm), bolster up is 25.75" (65cm), H: 25.75 (65cm)

**COLORS** : 01 – White with Almond



New

MARINE  
GRADE  
VINYL



YACHT



CENTER

## 940 LADDER BACK FLIP-UP BOLSTER SEAT



48945

- Beautiful, contemporary ladder back design with flip-up bolster feature allows you to pilot from a sitting or standing/leaning position
- Quilted seat and back cushions are padded with high density foam treated to resist the growth of mold and mildew
- Rugged hinge feature allows the bolster to flip-up with ease
- Ladder back frame and seat substrate constructed from high density polyethylene.

- Frame is anodized aluminum
- Padded arm rests and cushions are covered with high quality marine grade vinyl

### SPECIFICATIONS :

**48940** : Seat w/o arms – W: 19" (48cm), D: 23" (58cm), H: 21.25" (54cm)

**48945** : Seat w/ arms - W: 25.5" (65cm), D: 23" (58cm), H: 21.25" (54cm)



MARINE  
GRADE  
HDPE

MARINE  
GRADE  
VINYL

ANODIZED  
ALUMINUM  
FINISH



CENTER

## 975 COMPACT BOLSTER SEAT



48975

- Two-tone marine grade vinyl – white with almond
- All aluminum welded frame
- Comfort suspension matrix center seat support
- Arms flip up out of the way for easy ingress
- Flip-up bolster for piloting seated or leaning
- Millennium Swivel and Slide Hardware (21000) included for 2 7/8" diameter pedestal

### SPECIFICATIONS :

**48975** : W: 24" (61cm), D: 25.5" (65cm), H: 20.5" (52cm)

**COLORS** : 01 - White with Almond center

New

HIGH  
TENSILE  
ALUMINUM

MARINE  
GRADE  
VINYL



ALL BOATS

## 450/480 ULTIMATE POLYMER SEAT



48450

- All weather white seat support frame – Classic arm chair comfort and ladder back design
- High density, white polyethylene seat and back, thick, removable white cushions snap to frame, thru-bolted hardware; tough anodized aluminum extrusions, stainless steel fasteners

### SPECIFICATIONS :

**48450** : W: 26.5" (67cm), D: 17.5" (44cm), H: 20" (51cm)

**48470** : Dimensions w/ Arms: W: 23.5" (60cm), D: 17.5" (44cm), H: 21" (53cm)

**48480** : Dimensions w/o Arms: W: 18" (45cm), D: 17.5" (44cm), H: 21" (53cm)

**99068**: White padded arm rest covers – pair



48480



99068

MARINE  
GRADE  
HDPE

MARINE  
GRADE  
VINYL

ANODIZED  
ALUMINUM  
FINISH



CENTER

GARELICK  
E&S-In

## 130 PILOT SEAT—WITH OPTIONAL ALUMINUM CHAIR STAND



43130

- Polished Aluminum Frame
- Contemporary, Updated Styling
- For Houseboats, Pontoons and Cruisers
- Molded Seamless Cushions Keep Seat Comfortable and Dry
- Seat/stand combo w/ arm chair comfort at 30" seat height

### SPECIFICATIONS :

**43130** : Polished, with Stool frame - H: 24" (61cm), W: 19" (48cm), D: 17.5" (44cm)

**48003** : Seat only, polished frame

**48103** : Seat only, anodized frame

**75047** : Chair Stand, H: 28" (71cm), 21" (53cm) leg spread.

**COLORS** : 01 - White



48003

HIGH  
TENSILE  
ALUMINUM

MARINE  
GRADE  
VINYL

ALL BOATS

## 251 SEWN SEAT/ 061 HEAVY DUTY SEAT



48251

- Attractive and comfortable extra large cushions.
- Firm resilient foam, marine grade vinyl, "Anodized" aluminum extrusion back and arm supports, durable treated plywood substrates and padded armrests.

### SPECIFICATIONS :

**48251** : W: 25.5" (65cm), D: 20" (51cm), H: 19.5" (50cm)

**48061** : Welded frame : W: 25.25" (64cm), D: 19.5" (50cm), H: 20" (51cm)

**COLORS** : 48251 : 01 - White, 07 - Black, 09 - Gray; 48061 : 01 - White, 07 - Black, 09 - Gray



48061

HIGH  
TENSILE  
ALUMINUM

ANODIZED  
ALUMINUM  
FINISH

MARINE  
GRADE  
VINYL

ALL BOATS

## 281 MULTIPURPOSE SEAT



48281-01 : WHITE

- A versatile seat with arm chair comfort
- Firm resilient foam, marine grade quilted vinyl, durable treated plywood substrates, polished aluminum frame, padded armrests.

### SPECIFICATIONS :

**48281** : W: 24" (61cm), D: 19" (48cm), H: 17.5" (44cm)

**COLORS** : 01 - White, 02 - Blue



48281-02 : BLUE

HIGH  
TENSILE  
ALUMINUM

MARINE  
GRADE  
VINYL

ALL BOATS

## 490 CONTOUR CAPTAINS CHAIR



49000

- Deep bucket styling, updates many pilot seat applications
- Sized to match the scale and style of pontoons and runabouts
- Roto cast shell frame, marine grade vinyl, firm resilient foam

### SPECIFICATIONS :

**49000** : W: 23.5" (60cm), D: 22.5" (57cm), H: 19" (48cm)

**COLORS** : 01 - White w/Grey trim

**99070** : Mounting support plate for use on roto-cast seats such as this when a fore and aft seat slide is not used. Accepts 99023 and 99235 swivels. 13" x 7.875" x 3/16" (33 x 20 x 0.64cm) thick aluminum plate, mounting hole pattern 12.5" x 5" (32 x 13cm)



## 490 VALUE PRICED BUCKET SEAT



49003

- Clean, contemporary bucket styling
- Removable snap-on cushions
- Marine grade textured vinyl
- Roto cast shell frame with firm resilient foam

### SPECIFICATIONS :

**49003** : W: 23.5" (60cm), D: 22.5" (57cm), H: 19" (49cm)

**COLORS** : 01 - White

**99070** : Mounting support plate for use on roto-cast seats such as this when a fore and aft seat slide is not used. Accepts 99023 and 99235 swivels. 13" x 7.875" x 3/16" (33 x 20 x 0.64cm) thick aluminum plate, mounting hole pattern 12.5" x 5" (32 x 13cm)



## 099 SIDE GUNWALE REMOVABLE UTILITY/FIGHTING SEAT



48099

- Provides extra seating in the cockpit
- Mounts on either starboard or port side – Shur Loc catches (76000) provide permanent or temporary mounting
- Firm 2.5" (6cm) thick resilient foam
- Marine grade white vinyl covered seat 18" x 16" (46 x 41cm)
- Anodized aluminum tube frame
- Hypalon cushioned support leg
- Folds flat, maximum height 24" (61cm)

### SPECIFICATIONS :

**48099** : With chrome plated brass gimbal

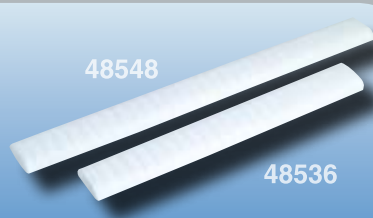
**48104** : Without gimbal



76000



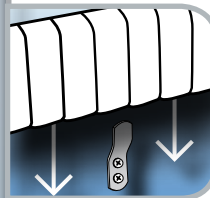
## COCKPIT SIDE COAMING BOLSTER



48548

48536

- Replace or add comfort and padded protection to inside coaming wall area of any cockpit
- Flexible PVC substrates allow bolster to conform to subtle contour of coaming
- Easy to install and remove – with unique hidden stainless clips and screws
- Marine grade UV quilted vinyl



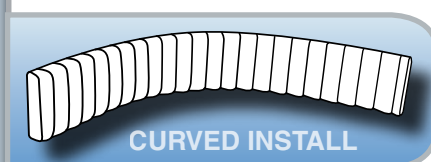
99136

### SPECIFICATIONS :

**48536** : L: 36" (91cm), H: 5" (13cm), Thickness: 1.75 (4.5cm)

**48548** : L: 48" (122cm), H: 5" (13cm), Thickness: 1.75 (4.5cm)

**99136** : Stainless steel upholstery clip with 1/4" offset



CURVED INSTALL



## 400 ROTO MOLDED SEAT & SEAT/PEDESTAL PACKAGE



48400

- Compact dimensions, beautiful styling, makes this seat perfect for center console or dual seat applications
- Made for easy maintenance
- Rotationally molded of tough UV resistant white polyethylene, marine grade white quilted vinyl covers, snap-on removable cushions, tee-nut bottom inserts. Anodized support rails make seat compatible with most pedestals, swivel and fore & aft seat slides

### SPECIFICATIONS :

**48400** : Seat with cushions - W: 20" (51cm), D: 23" (58cm), H: 19" (48cm)

**48401** : Seat without cushions

**48402** : Deluxe Package – Includes seat cushions, 15" (38cm) anodized ribbed pedestal base

**99101** : Cushion set – White quilted vinyl snap-on

**COLORS** : 01 – White



48402

ANODIZED  
ALUMINUM  
FINISH

MARINE  
GRADE  
VINYL

RUNABOUT

CENTER

## 420 COMPACT ROTO MOLDED SEAT & SEAT/PEDESTAL PACKAGE



48420

- Molded-In Contour Styling Features makes seat perfect for any boating activity
- Ideal for center console or fish boat replacement seating
- Compact ergonomic design offers comfort and support with or without snap-on cushions
- Front waterfall taper edges give added thigh comfort
- Center drain eliminates water
- Rotationally molded of tough UV resistant white polyethylene, marine grade waterproof molded vinyl, snap-on removable cushions

### SPECIFICATIONS :

**48420** : Seat w/ cushions 17.5" W (44cm), 18.5" D (47cm), 17" (43cm) H

**48425** : Value Package – Includes seat cushions, 15" (38cm) anodized ribbed pedestal base, 99070 support plate

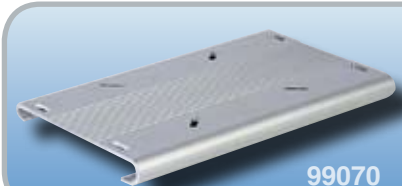
**99070** : For use on roto-cast seats such as this when a fore and aft seat slide is not used. Accepts 99023 and 99235 swivels. 13"L x 7.875"W x 3/16" T (33 x 20 x .64cm). Mounting hole pattern 12.5" x 5" (32 13cm)

**99201** : Cushion Set - White molded vinyl snap-on

**COLORS** : 01 – White



48425



99070

ANODIZED  
ALUMINUM  
FINISH

MARINE  
GRADE  
VINYL

RUNABOUT

CENTER

## 050 PREMIUM ROTO MOLDED SEAT & SEAT/PEDESTAL PACKAGE



48050

- Extra wide seating designed for easy maintenance
- Ergonomically designed with thick snap-on cushions for real comfort
- Ideal for center console or fly bridge installations
- Rotationally molded of tough UV resistant white polyethylene, marine grade white quilted vinyl, snap-on removable cushions, tee-nut bottom inserts accept anodized support rails that make it compatible with most pedestals, swivel and fore & aft seat slides.

### SPECIFICATIONS :

**48050** : Seat with cushions - W: 22.5" (57cm), D: 18" (46cm), H: 19" (31cm)

**48055** : Seat without cushions

**48056** : Premium Package – Includes seat cushions, 15" (38cm) anodized ribbed pedestal base

**99200** : Cushion Set - White quilted vinyl snap-on

**COLORS** : 01 – White



48056

ANODIZED  
ALUMINUM  
FINISH

MARINE  
GRADE  
VINYL

RUNABOUT

CENTER

## 406 VALUE SEAT/PEDESTAL PACKAGE



48406

- Our complete value priced chair package
- Compact design makes it ideal for most applications
- Affordable upgrade or replacement
- Made for easy maintenance
- Rotationally molded of tough UV resistant white polyethylene
- Marine grade white vinyl, snap-on removable cushions
- Anodized aluminum pedestal base, 360° locking aluminum swivel casting, 9" (23cm) diameter support base

### SPECIFICATIONS :

**48406** : Value Package – Includes seat cushions, 15" (38cm) anodized ribbed pedestal base. W: 20" (51cm), D: 23" (58cm), H: 19" (48cm)

**48409** : With adjustable pedestal 12" to 18" (31-46cm)

**COLORS** : 01 – White

ANODIZED  
ALUMINUM  
FINISH

RUNABOUT

CENTER

**GARELICK**  
EEZ-IN

MARINE SEATING **27**  
ROTO-MOLDED SEATING - 050, 406

## 790 FISHERMAN FOLD DOWN SEAT



48791-01 : WHITE/GRAY

- Updated two-tone styling – full 16" (40 cm) width
- Firm dual durometer foam, 30 oz. marine grade vinyl, high density plastic substrates, T-nutted for standard hardware mount patterns, silver powder coated aluminum hinges
- Made in the U.S.A.

**48791** Seat only – W: 16" (40 cm), D: 15" (38 cm), H: 18" (46 cm)

**COLORS** 01 – White/Gray, 02 – Lt Blue/Navy Blue, 09 – Lt Gray/Medium Gray Texture, 15 – Lt Tan/Medium Tan



02-LT BLUE/  
NAVY

09-LT GRAY/  
MED GRAY



15 – LT TAN/  
MED TAN



## 390 QUALITY FOLD DOWN SEAT



48391-02 : BLUE

- Comfortable – full 16" (40 cm) width
- Firm dual durometer resilient foam, 30 oz. marine grade vinyl, high density plastic substrates, T-nutted for standard seat hardware mount patterns, silver powder coated aluminum hinges
- Made in the U.S.A.

**48391** Seat only – W: 15.5" (39cm), D: 14" (36cm), H: 18" (46cm)

**COLORS** 01 – White, 02 – Blue, 09 – Gray, 15 – Tan



01-WHITE

09-GRAY



15-TAN



## 690 CITATION HIGH BACK PREMIUM FOLD-DOWN SEAT



48691-01 : WHITE



02-BLUE



09-GRAY



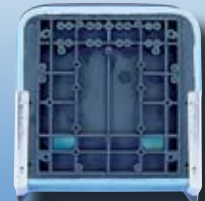
15-IVORY

- Beautiful two-color upscale 30 oz. marine grade vinyl with UV inhibitor, and superior resistance to abrasion, dirt and grime
- Firm dual durometer high density foam - longer lasting comfort
- Contour fit for greater thigh and back support
- Molded plastic seat and back substrates
- Silver powder coated aluminum hinges
- Made in the U.S.A.

**48691** W: 17" (43 cm), D: 17" (43 cm), H: 24" (61 cm)

**COLORS** 01-White/Gray, 02-Offshore Blue/Gray, 09-Gray/Gray, 15-Ivory/Tan

MOLDED  
PLASTIC  
SUB-  
STRATES



## 890 CLASSIC FOLD DOWN SEAT



48891-09 : LT GRAY/GRAY TEXTURE



01-WHITE/  
WHITE

02-LT BLUE/  
NAVY



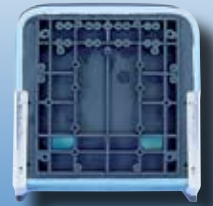
15 - LT TAN/  
MED TAN

- Contemporary Two-Tone Classic Design – full 18" (46 cm) width
- Firm dual durometer resilient foam, 30 oz. marine grade vinyl, high density plastic substrates, T-nutted for standard seat hardware mount patterns, silver powder coated aluminum hinges
- Made in the U.S.A.

**48891** Seat only – W: 18" (46 cm), D: 17" (43 cm), H: 23" (59 cm)

**COLORS** 01 – White/White Texture, 02 – Lt Blue/ Navy Blue, 09 – Lt Gray/Gray Texture, 15 – Lt Tan/Medium Tan

MOLDED  
PLASTIC  
SUB-  
STRATES



ANODIZED  
ALUMINUM  
FINISH

MARINE  
GRADE  
VINYL

YACHT

CENTER

## 401 CLASSIC HELMSMAN SEAT



40116

### IDEAL FOR DUAL HELM SEATING ON EXPRESS CRUISERS

- Sewn cushions offer contemporary styling
- Available in your choice of two widths
- Mounts to box or side coaming
- Included hardware allows seat to fold for access below deck

#### SPECIFICATIONS :

**40116** : 16" (41cm) Wide, 17" (43cm) Deep, 16" (41cm) High

**40128** : 28" (71cm) Wide, 17.75" (45cm) Deep, 16.75" (43cm) High

**75055** : Folding Helmsman Hardware and H-leg. 32" (81cm) Height, Includes mounting socket hardware

**COLORS** : 01 - White

### SIDE MOUNT HELMSMEN SEAT HARDWARE

- Aluminum support arms attach to bottom of seat or table
- Folding brackets attach to side of boat
- Stanchion legs fit sockets under seat or table
- Gives added support. Allows seat or table to fold against bulk head or coaming

#### SPECIFICATIONS :

**75014**: H-Leg and Sockets ONLY



75055

ANODIZED  
ALUMINUM  
FINISH

MARINE  
GRADE  
VINYL

YACHT

CENTER



# SEAT & TABLE HARDWARE COLLECTION

THE FUTURE IS AT YOUR FINGERTIPS!

...Be sure to check out garelick's revolutionary lever actuated seat hardware systems on page 32

## BOAT TYPE COMPATIBILITY

## MARINE SEAT HARDWARE SYSTEMS



YACHT



CENTER

### 4.0" PEDESTAL DIAMETER

**SWIVEL** : 360 degrees of free rotation or locking at 45 degree increments. Single lever operation with drag adjustment for optimal performance.

**SLIDE** : 6" of fore and aft travel with positive lock at 1" increments.

**LIFT** : 4" of vertical travel with 112 lbs. of gas spring assist.

**PAGE 31**



YACHT



CENTER



DECK



PONTOON

### 3.5" PEDESTAL DIAMETER

**SWIVEL** : 360 degrees of free rotation or locking at 10 degree increments. Single lever operation with drag adjustment for optimal performance.

**SLIDE** : 6" of fore and aft travel with positive lock at 1" increments.

**LIFT** : Up to 8" of vertical travel - manual, positively locked at 1" increments

**PAGES 34-35**



CENTER



FISHING



PONTOON



RUNABOUT



BASS

### 2.875" PEDESTAL DIAMETER

**SWIVEL** : 360 degrees of free rotation or locking at 10 or 15 degree increments Single lever operation with drag adjustment for optimal performance.

**SLIDE** : 6" of fore and aft travel with positive lock at 1" increments.

**LIFT** : Up to 8" of vertical travel - manual, positively locked at 1" increments

**PAGES 36 - 41**



ALL BOATS

### LOW PROFILE : SURFACE MOUNT

**SWIVEL** : 360 degrees of free rotation or locking at 45 degree increments. Single lever operation offers efficient, hassle-free performance.

**SLIDE** : Up to 7.5" of fore and aft travel with infinite adjustability and friction lock.

**PAGES 42 - 43**

## FEATURES, SAFETY AND RELIABILITY



### SEAT SLIDE

Allows fore and aft movement of seat (usually 6") and changes the horizontal distance between helm/pilot station and seat which provides greater comfort.



### SWIVEL TOP

Provides convenience of 360° rotation to allow any boat seat to be used for multiple purpose or observation. Various mechanical means allow for locking/securing seat from swiveling.



### PEDESTAL

Permanent means of mounting a boat seat, suspension system, slide and swivel top to the deck of a boat. Fixed and adjustable heights in three different diameters for proper fit and comfort are offered.



Our seating systems are engineered and tested for durability and reliable operation. Our components meet the stringent requirements recommended by **American Boat and Yacht Council (ABYC)** for static load, lateral, vertical and horizontal impact.

## MARINE TABLE HARDWARE SYSTEMS



Garelick's Marine Table Hardware Collection includes Fixed, Manual and Gas-rise stanchion height adjustments, dozens of different mounting and installation options (including our quick release system on PG 47) as well as an unparalleled variety of table tops, bases and stanchion finish options. **PAGES 46 - 49**

## SUPERIOR PRODUCTS DURABLE MATERIALS

ABYC H31 ANODIZED ALUMINUM FINISH DIE-CAST ALUMINUM MARINE GRADE HDPE SAND-CAST ALUMINUM HIGH TENSILE ALUMINUM STAINLESS STEEL

# COMMANDER 4.0" SERIES HARDWARE

Finally, a series of Pedestals with integrated Swivels and Fore and Aft slides specifically designed and engineered for boats 40' and larger!

Integrated 360 degree swivel rotation, Fore and Aft Slide, and gas spring Lift features are combined in the latest series of Commander systems. Our 4" (10cm) diameter anodized aluminum stanchion is available in 3 fixed and 4 adjustable heights.

## CLASSY AND CAPABLE

### UPSCALE QUALITY, PREMIUM MATERIALS

Only the best materials are used in the Commander Seat Hardware System. With Oversized Anodized Aluminum Tubing, Solid Stainless Steel slide rails, Delrin Bearing Rods, and CNC Machined or Precision-Cast Aluminum, the hand built Commander system makes a statement of class aboard any large boat or yacht.

#### SWIVEL

- 360 degree free rotation or positive lock in 45 degree increments - single lever operation with drag adjustment for optimal performance

#### SLIDE

- 6" of fore and aft travel with positive locking at 1" increments. Solid 1" stainless steel slide rails with lubrication system are operated with a single lever for effortless and smooth precision operation

#### LIFT

- Vertical travel of 4" is operated from a single lever in a lift-to-lift motion. A gas spring and lubrication system provide 112 lbs. of lift force

#### STANCHION DECK PLATE (78351)

- Anodized aluminum plate provides a solid footing for the commander system (see page 44)

#### FOOT REST (78350)

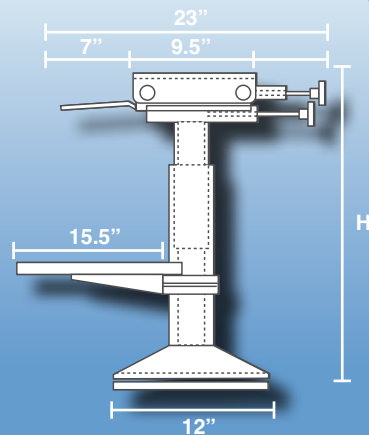
- Designed with the same style, performance and durability as the rest of the remarkable Commander system (see page 45)

ANODIZED ALUMINUM FINISH    STAINLESS STEEL    HIGH TENSILE ALUMINUM    YACHT

COMMANDER MODEL	COMMANDER II MODEL	COMMANDER SYSTEM TYPE	HEIGHT (H) INCHES (cm)
78215	78315	GAS-RISE ADJ. HEIGHT SYS.	12 3/8"-15 3/8" (31-39cm)
78218	78318	GAS-RISE ADJ. HEIGHT SYS.	14 3/8"-18 3/8" (36-46cm)
78225	78325	GAS-RISE ADJ. HEIGHT SYS.	21 1/8"-25 1/8" (55-65cm)
78229	78329	GAS-RISE ADJ. HEIGHT SYS.	24 1/4"-29 1/4" (64-74cm)
78102	N/A	ELECTRIC-RISE ADJ. HT. SYS.	14 1/4" - 18 1/4" (36-46cm)
78111	78411	FIXED HEIGHT SYSTEM	11" (28cm)
78115	78415	FIXED HEIGHT SYSTEM	15" (38cm)
78124	78424	FIXED HEIGHT SYSTEM	24" (61cm)



## SIZED TO MATCH YOUR YACHT



#### SOLID

From the diameter of the stanchion tube to the size of the CNC Machined knobs, every component of the Commander system is robustly designed to match the scale, precision and response of the highest quality yachts available on the market today.

**GARELICK**  
EEz-In

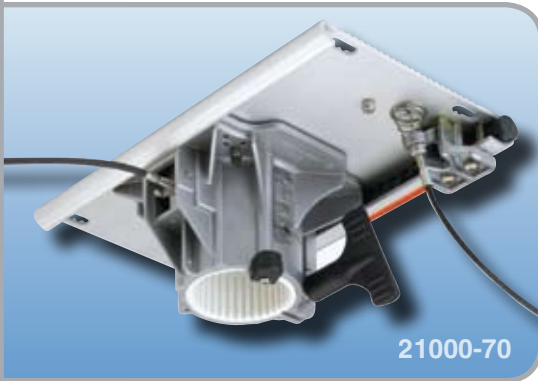
# REMOTE LEVER ACTUATED MARINE SEAT HARDWARE



## ADJUSTIBILITY & COMFORT - AT YOUR FINGERTIPS!

Designed for OEM installation only. Due to the large variety of aftermarket seat styles and cable lengths required, these lever actuated systems are not intended for consumer sale. Contact your **GARELICK EEz-In** sales representative for availability.

### LEVER ACTUATED MILLENNIUM SLIDE AND SWIVEL SYSTEM



21000-70

#### MILLENNIUM SERIES - SEAT SLIDE SYSTEM

- Lever actuated- one lever controls 4.25" of smooth, wobble-free fore/aft movement and one lever controls 360° rotation
- Ergonomically designed levers are comfortable to the touch and incorporate a mechanical advantage for ease of operation
- Levers may be snapped together in a cluster or mounted individually
- Levers are designed to mount under side of seat
- Designed for use with 2 7/8" or 3.5" diameter Garelick EEz-In ribbed or smooth pedestals. Will fit fixed and adjustable height pedestals
- Cables are stainless steel construction for strength and durability
- Heavy duty anodized aluminum top plate has standard 5"x12" hole pattern to accommodate standard seat mounting holes
- Internal Delrin cup for smooth gall-free operation. Cup engages in 10° increments for positive locking. Secondary twist control for added safety
- Meets ABYC-H31, Type A Standards and stringent Garelick performance standards
- Includes retaining hardware (99302) and ribbed Delrin cup (99027)

#### SPECIFICATIONS :

**21000-70** : Adds 1" (2.54 cm) to pedestal height. Gray powder coated finish. Slide plate is 13.75" x 8" (35 x 20 cm). Hole pattern for seat mounting is 5" x 12"

**US PATENTS #5,882,076 AND #5,884,887**



**DIE-CAST**  
ALUMINUM

**ANODIZED**  
ALUMINUM  
FINISH

**HIGH**  
STRENGTH  
COMPOSITE

**ABYC**  
H31

**ALL BOATS**

**32 SEAT HARDWARE**  
LEVER ACTUATED MILLENNIUM SLIDE AND SWIVEL SYSTEM

**GARELICK**  
EEz-In

## LEVER ACTUATED EVOLUTION SLIDE AND SWIVEL SYSTEM



23000-70



- Lever actuated- one lever controls 4.25" of smooth, wobble-free fore/aft movement and one lever controls rotation
- Ergonomically designed levers are comfortable to the touch and incorporate a mechanical advantage for ease of operation
- Levers may be snapped together or mounted individually
- Designed for use with 2 7/8" diameter fixed height ribbed pedestals
- Cables are stainless steel construction for strength and durability
- Heavy duty anodized aluminum top plate has standard 5"x12" hole pattern to accommodate standard mounting holes
- Internal Delrin cup provides smooth, gall-free operation and locks in 15° increments
- Meets ABYC-H31 Type A and Garelick performance standards
- Includes retaining hardware (99302) and ribbed Delrin cup (99027)

### SPECIFICATIONS :

Adds 1/2" (1.25cm) to Pedestal height.

**23000-70** : Black e-coated finish. Slide plate is 13.75" x 8" (35 x 20 cm). Hole pattern for seat mounting is 5" x 12"

**US PATENTS #6,877,811**



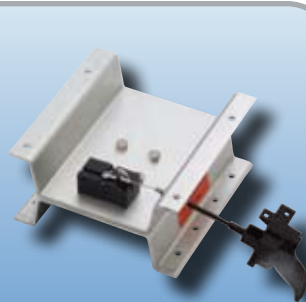
**DIE-CAST**  
ALUMINUM

**ANODIZED**  
ALUMINUM  
FINISH

**ABYC**  
H31



## LEVER ACTUATED SWIVEL



75371-70



- Lever actuated- lift up on lever to swivel, release lever and locking pin locks at 90° intervals
- Anodized aluminum construction
- Ergonomically designed levers are comfortable to the touch and incorporate a mechanical advantage for ease of operation
- Cables are stainless steel construction for strength and durability
- Anodized aluminum with stainless steel hardware
- Footprint of swivel is 8" x 8"
- Swivel assembly is 4" Tall



**ANODIZED**  
ALUMINUM  
FINISH

**ABYC**  
H31



## LEVER ACTUATED TANDEM SLIDE WITH LOW PROFILE SWIVEL



75002-75



- Heavy duty system for use with large helm seats where rock solid and wobble free stability are required
- Ergonomically designed levers are comfortable to the touch and incorporate a mechanical advantage for ease of operation
- One lever controls 360° rotation and one lever controls fore/aft movement
- Levers may be snapped together in a cluster or mounted individually
- Cables are stainless steel construction for strength and durability
- Tandem slide available in various lengths



**DIE-CAST**  
ALUMINUM

**ANODIZED**  
ALUMINUM  
FINISH

**ABYC**  
H31



## LEVER ACTUATED TANDEM SLIDE SYSTEM



75002-70



- Provides fore & aft movement for double-wide and bench type seat installations
- Precision anodized aluminum extrusions slide easily and lock at 1" increments
- Ergonomically designed levers are comfortable to the touch and incorporate a mechanical advantage for ease of operation
- Cables are stainless steel construction for strength and durability
- Tandem slide available in various lengths



**ANODIZED**  
ALUMINUM  
FINISH

**ABYC**  
H31



# 3.5" PEDESTAL DIAMETER MID-RANGE SEAT HARDWARE

## SEAT SLIDE/SWIVEL COMBO OPTIONS



### MILLENNIUM SERIES - SEAT SLIDE SYSTEM

- Low profile design allows 360° of rotation and 6" of smooth, wobble-free fore and aft travel
- Heavy duty anodized aluminum slide plate has standard 5"x12" hole pattern to accommodate standard seat mounting holes
- Positive Lock Spider – rotates 360°, internal cup engages in 10° increments for positive stop lock (Secondary twist control offers variable drag adj. and can be tightened to lock in place)
- Internal Delrin cup provides smooth, gall-free operation
- Available in either left- or right-hand operation
- Meets ABYC-H31, Type A & Garelick performance standards
- Powder coated finish
- Includes retaining hardware (99302)

#### SPECIFICATIONS :

Adds 1/2" (1.25cm) to Pedestal height.

**22000** : Positive Lock Slider & Spider Combo Left Hand Lever Silver Powder Coat Finish

**22001** : Positive Lock Slider & Spider Combo\* Right Hand Lever Silver Powder Coat Finish

**SLIDE** : High tensile aluminum profile extrusion 13.75" x 8" (35cm x 20cm) plate, mounting hole pattern 5" x 12" (13cm x 30cm), Fore and Aft travel 6" (15cm).

**SWIVEL** : High tensile aluminum 2 7/8" (7cm) diameter, plastic internal cup. All stainless hardware. \*When seated, right hand operates slide lever.

US PATENTS #5,882,076 AND #5,884,887



### STANDARD SERIES - SEAT SLIDE AND SWIVEL

- Provides smooth fore and aft travel and 360° seat rotation
- Adds comfort and stability for any swivel boat seat
- Mounts underneath seat and on top of pedestal stanchion
- Compatible with any 2 7/8" (7cm) diameter tube
- Convenient handles provide solid locking at any position
- Meets ABYC-H31, Type A & Garelick performance standards
- Anodized aluminum for protection from corrosion and weathering
- Includes retaining hardware (99300) to prevent inadvertent detachment

#### SPECIFICATIONS :

Adds 1 5/8" (4cm) to height. Hole Pattern: 5" x 12" (13x30cm)

**75082** : 6" (15cm) Fore and Aft Travel 8.5" W x 8" L (22cm x 20cm)

**75083** : 7" (18cm) Fore and Aft Travel 8.5" W x 13" L (22cm x 33cm) Required on Roto molded Seat Models (Includes 75081 & 99023)



### 3.5" GAS RISE COMMANDER SEAT HARDWARE

- Smooth precision operation
- Hand built from CNC Machined Billet Aluminum
- Stainless steel slide rails have own lubrication system
- Swivels 360° in free rotation or positive locks in 45 degree increments
- Single lever operates gas rise lift system with 112 lbs of lift force

#### SPECIFICATIONS :

**79715** : 500 Newton gas spring assisted for effortless height adjustment from 13.25" to 16.25" (34 to 42 cm). Top plate is 13" x 9.5" (33 x 25 cm). Mounting holes are 5" x 10.5" spacing.



### 3.5" GAS RISE COMMANDER SEAT HARDWARE SYSTEM WITH MILLENNIUM SWIVEL

- Smooth precision operation, 3" of vertical height adjustment
- Lift lever to activate gas rise. Locking cam handle for added security
- Positive lock Millennium Spider rotates 360° by lifting side lever. May be left in "up" position for "free swiveling"
- Secondary drag control provides additional friction, or locks swivel
- Slide lever engages internal Delrin cup in 10° increments
- Cam lever controls 6" of fore/aft movement, engages solidly, provides rock solid, wobble free operation
- Meets ABYC-H31 Type A Standards

#### SPECIFICATIONS :

**78545-14** : Vertical height adjustment from 11.75" to 14.75" (30 cm to 37.5 cm). Top slide plate is 13.75" x 8" (35 x 20 cm). Hole pattern for seat mounting is 5" x 12"

# 3.5" PEDESTAL DIAMETER MID-RANGE SEAT HARDWARE

## SWIVEL TOP OPTIONS



### MILLENNIUM SERIES

- Low profile design allows 360° of rotation
- Heavy duty anodized aluminum slide plate has standard 5"x12" hole pattern to accommodate standard seat mounting holes
- 360° rotation is regulated by dual locking devices - lift the positive lock lever to rotate. Drop the lever to lock in place in 10° increments.

Secondary twist control offers variable drag adjustment and can be tightened down to lock in place

- Internal Delrin Bearing Cup provides smooth, gall-free operation
- Powder coated finish

### SPECIFICATIONS :

**99036**: 360° Positive Lock Swivel Spider Mount Black E-coat Finish

**99127**: Internal Delrin Bearing Cup for 22000 & 99036



### STANDARD SERIES

- 4 prong spider swivels 360° and locks positively
- Fits all Garelick 2 7/8" (7cm) diameter stanchion pedestal seat bases
- High tensile aluminum and all stainless hardware

**99023**: 360° Positive Lock Swivel Spider Mount Anodized Aluminum Finish

**99028**: Delrin Bearing Set



### RETAINING HARDWARE FOR SEAT SWIVELS

- Secures Swivel Seats to Stanchion Post while unlocked and free swiveling - prevents inadvertent detachment
- Attaches to 360° swivel spiders underneath boat seats
- Three styles - fits all 2 7/8" stanchion post "Standard" and "Millennium 2000" **GARELICK EEJ-In** Brand Swivel Spiders
- Can be retro fit to **GARELICK EEJ-In** Swivel Spider models
- Patent Pending



### SPECIFICATIONS :

**99300** : for "Standard" 4 Prong Swivel Spiders. Fits model 99023 Swivel Spider, 750XX, 752XX Series Seat Bases, and 75082, 75083 Combination Seat Slide and Swivel Spider

**99301** : Fits models 99025, 99026, 99036 Swivel Spiders, 753XX, 754XX, 756XX Series Seat Bases

**99302** : for Millennium 2000 Series 20000, 20001, 21000, 21001, 23000, 23000-21, 99235, 99235-21, 22000, 22001

## PEDESTAL OPTIONS



### MID-RANGE PEDESTAL

- 3.5" Diameter Stanchion for Mid-Size (30 Ft.+ ) Boats
- Proportionately to Scale for added Strength and Styling
- Design accommodates all **GARELICK EEJ-In** Seat Slide and Swivel Spiders
- Popular Heights Available - 3 Fixed Heights and 2 Adjustable Heights
- Meets ABYC, H-31 Type A Standards
- 3.5" (9 cm) diameter smooth stanchion tube, stanchion base casting 10.5" (27 cm) diameter 6 hole, 3/8" mounting holes
- Polished and Anodized aluminum components

### SPECIFICATIONS :

#### FIXED HEIGHTS

**78515**: 15" (38 cm) High

**78524**: 24" (61 cm) High

**78530**: 30" (76 cm) High

**75054**: Detachable Solid Stanchion Plate 10.5" (27 cm) dia. For above models

ABYC  
H31

HIGH  
TENSILE  
ALUMINUM

ANODIZED  
ALUMINUM  
FINISH

CENTER

YACHT

**GARELICK**  
**EEJ-In**

SEAT HARDWARE **35**  
MID-RANGE SEAT HARDWARE

# HOW IT WORKS : STANDARD SEAT HARDWARE SYSTEMS

## 1 FOUR PRIMARY COMPONENTS

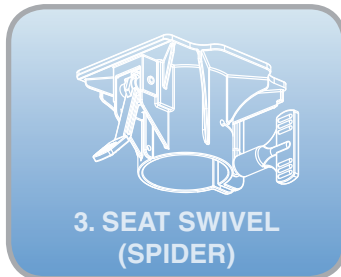
The Garelick Standard Seat Hardware System is comprised of four basic components: **1. Pedestal**, **2. Delrin Bearing Cup**, **3. Seat Swivel (Spider)** and **4. Seat Slide**. Though not all Standard Seat Hardware solutions utilize all four of these components, all of the quality products found in the next five pages fit into one of these four categories and can be easily combined to perfectly match your needs.



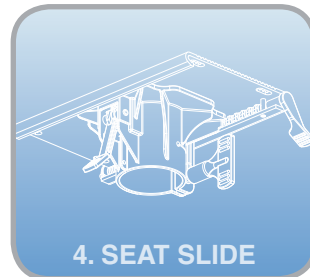
The foundation of the seating system, the pedestal attaches to the deck and supports all related componentry. Available in fixed or adjustable heights and two finishes.



Available in several different formats to accommodate all types of Garelick 2 7/8" pedestals, bearing cups act as a non-rotating, greaseless indexable locking mechanism.



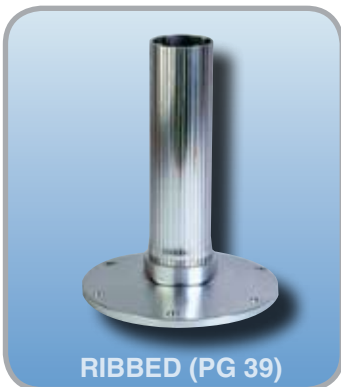
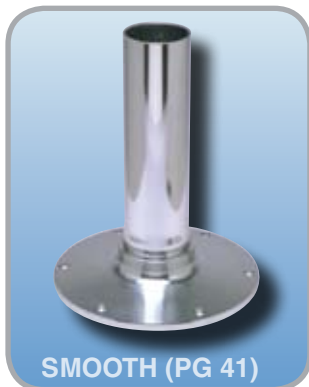
Three different spider styles provide varying levels of rotational adjustability and integration with both the delrin bearing cups or bearing rings and optional seat slides.



Two high performance Seat Slides are available for use with Standard Seat Hardware systems. These components offer smooth, reliable fore and aft seat adjustment.

## 2 WHAT WILL LOOK BEST?

Within the Standard Seat Hardware Line, there are two profile shape options available: **SMOOTH** (pg 41) and **RIBBED** (39) stanchion tubes. Both profiles offer the same features, quality and performance **GARELICK EEg-In**. Products are known for; so just pick the aesthetic that suits you best and assemble a system with all of the features you need today!



US PATENT #DES 367841

## 3 INCREDIBLE ADJUSTABILITY!

The Garelick Line of Standard Seat Hardware offers everything from fixed height pedestals with manually indexable rotation to pedestals with adjustable height, automatically indexed rotation and integrated seat slides. Here is a peek at some of these flexible features.



Pedestals feature positive pin and/or friction locking handle to secure height.



"Unitized" telescoping parts interlock to form seamless, wobble-free system.



Pedestals mate exactly with delrin cups providing wobble and gall free rotation.



All ribbed hardware meets ABYC-H31 Type A Seating Standards.



Spider, Delrin Cup and Pedestal form an integrated, greaseless swivel.



Mating grooves in the lever-actuated follower and Delrin Cup provide rotational lock.

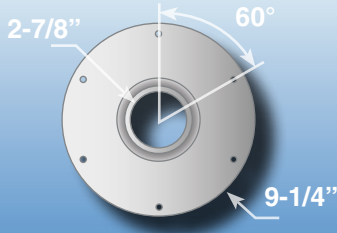
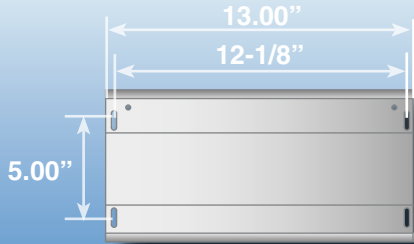
## 2.875" PEDESTAL DIAMETER SEAT HARDWARE

### THREE OPTIONS :

1. COMPLETE SYSTEMS (PG 37)
2. RIBBED SERIES COMPONENTS (PGS 38-39)
3. SMOOTH SERIES COMPONENTS (PGS 40-41)

## STANDARD 2.875" DIAMETER SEAT HARDWARE SCHEMATICS

### STANDARD SEAT SLIDE HOLE PATTERN



**2.875" SERIES  
9.25" DIAMETER  
BASE CASTING**

## GAS RISE ADJUSTABLE PEDESTAL SYSTEM



- The complete package – lift, slide and swivel
- Touch actuated lever, gas rise
- Two heights to choose
- 2 7/8" dia. pedestal base with Millennium Slide & Swivel

### SPECIFICATIONS :

**75636** Low 12" – 15"  
**75637** Medium 14" – 18"

**ABYC H31** HIGH TENSILE ALUMINUM ALL BOATS

## FIXED & ADJ. HEIGHT SEAT BASES COMPLETE SYSTEM - SMOOTH SERIES



75030

### FIXED HEIGHT

- Mounts any seat securely
- 4 prong spider swivels 360° and locks positively

### SPECIFICATIONS :

2 7/8" (7cm) diameter smooth stanchion tube, 9.25" (23cm) diameter base plate  
**75031**: Polished 9" (23cm) High  
**75231**: Anodized 9" (23cm) High  
**75030**: Polished 12" (30cm) High  
**75230**: Anodized 12" (30cm) High  
**75032**: Polished 18" (46cm) High  
**75232**: Anodized 18" (46cm) High  
**75033**: Polished 24" (61cm) High  
**75233**: Anodized 24" (61cm) High  
**75034**: Polished 30" (76cm) High  
**75234**: Anodized 30" (76cm) High



75035

### ADJUSTABLE HEIGHT

- Seat raises or lowers, locks at desired height
- 4 prong spider swivels 360° and locks
- Available anodized finish which helps prevent saltwater corrosion and weathering

### SPECIFICATIONS :

2 7/8" (7cm) diameter smooth stanchion tube, 9.25" (23cm) diameter base plate  
**75035**: Polished 12" - 17" (30 - 43cm) H  
**75235**: Anodized 12" - 17" (30 - 43cm) H  
**75028**: Polished 18" - 24" (46 - 61cm) H  
**75228**: Anodized 18" - 24" (46 - 61cm) H

## ADJ. HEIGHT SEAT BASES COMPLETE SYSTEM - RIBBED SERIES



75335

### ADJUSTABLE HEIGHT : FRICTION LOCK

- Seat raises or lowers, locks at desired height
- Positive lock spider, rotates 360°. Fluted bearing cup fits onto ribbed stanchion profile
- Wobble-Free Design

### SPECIFICATIONS :

2 7/8" (7cm) diameter ribbed stanchion tube, 9.25" (23cm) diameter base plate  
**75335** : 12" - 17" (30-43cm) anodized tube

### BLUE WATER ADJ. HEIGHT: POSITIVE PIN TYPE LOCK

- Pin secures base at specific height in 1" increments
- Stainless steel lock pin locates securing hole easily
- Positive lock spider, rotates 360°. Fluted bearing cup fits onto ribbed stanchion profile
- Wobble-Free Design

### SPECIFICATIONS :

**75435** : 12" - 17" (30 - 43cm) anodized tube  
**75428** : 18" - 24" (46 - 58cm) anodized tube

US PATENT #29,029,811



75435

**ABYC H31** HIGH TENSILE ALUMINUM ALL BOATS

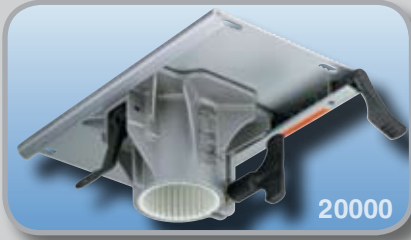
**ABYC H31** HIGH TENSILE ALUMINUM ALL BOATS

**GARELICK**  
EE3-In

SEAT HARDWARE **37**  
2.875" COMPLETE SYSTEMS

# 2.875" PEDESTAL DIAMETER RIBBED STANCHION SERIES SEAT HARDWARE

## SEAT SLIDE/SWIVEL COMBO OPTIONS



### MILLENNIUM SERIES - SEAT SLIDE SYSTEM

- Low profile design allows 360° of rotation and 6" of smooth, wobble-free fore and aft travel
- Heavy duty anodized aluminum slide plate has standard 5"x12" hole pattern to accommodate standard seat mounting holes
- Positive Lock Spider – rotates 360°, internal cup engages in 10° increments for positive stop lock (Secondary twist control offers variable drag adj. and can be tightened to lock in place)
- Internal Delrin cup provides smooth, gall-free operation
- Meets ABYC-H31, Type A & Garelick performance standards
- Available in either left- or right-hand operation
- Plain or Powder Coated finish
- Includes retaining hardware (99302)

#### SPECIFICATIONS :

Adds 1/2" (1.25cm) to Pedestal height.

**20000** : Positive Lock Slider & Spider Combination Left Hand Lever Plain Finish

**20001** : Positive Lock Slider & Spider Combination\* Right Hand Lever Plain Finish

**21000** : Positive Lock Slider & Spider Combination Left Hand Lever Silver Powder Coat Finish

**21001** : Positive Lock Slider & Spider Combination Right Hand Lever Silver Powder Coat Finish

**SLIDE** : 13.75" x 8" (35x20cm) slide plate, 5" x 12" (13x30cm) mtg hole pattern, 6" (15cm) travel

**SWIVEL** : 2 7/8" (7cm) diameter. \*When seated, right hand operates slide lever.

**US PATENTS #5,882,076 AND #5,884,887**



### STANDARD SERIES - SEAT SLIDE AND SWIVEL

- Provides smooth fore and aft travel and 360° seat rotation
- Adds comfort and stability for any swivel boat seat
- Mounts underneath seat and on top of pedestal stanchion
- Compatible with any 2 7/8" (7cm) diameter tube
- Convenient handles provide solid locking at any position
- Meets ABYC-H31, Type A & Garelick performance standards
- Anodized aluminum for protection from corrosion and weathering

#### SPECIFICATIONS :

Adds 1 5/8" (4cm) to height. Hole Pattern: 5" x 12" (13x30cm)

**75082** : 6" (15cm) Fore and Aft Travel 8.5" W x 8" L (22cm x 20cm)

**75083** : 7" (18cm) Fore and Aft Travel 8.5" W x 13" L (22cm x 33cm) Required on Roto molded Seat Models (Includes 75081 & 99023)



### RETAINING HARDWARE FOR SEAT SWIVELS

- Secures Swivel Seats to Stanchion Post while unlocked and free swiveling - prevents inadvertent detachment
- Attaches to 360° swivel spiders underneath boat seats
- Three styles – fits all 2 7/8" stanchion post "Standard" and "Millennium 2000" **GARELICK Ee3-In** Brand Swivel Spiders
- Can be retro fit to **GARELICK Ee3-In** Swivel Spider models
- Patent Pending

#### SPECIFICATIONS :

**99300** : for "Standard" 4 Prong Swivel Spiders. Fits model 99023 Swivel Spider, 750XX, 752XX Series Seat Bases, and 75082, 75083 Combination Seat Slide and Swivel Spider

**99301** : Fits models 99025, 99026, 99036 Swivel Spiders, 753XX, 754XX, 756XX Series Seat Bases

**99302** : for Millennium 2000 Series 20000, 20001, 21000, 21001, 23000, 23000-21, 99235, 99235-21, 22000, 22001

# 2.875" PEDESTAL DIAMETER RIBBED STANCHION SERIES SEAT HARDWARE

## SWIVEL TOP OPTIONS



99026

### MILLENNIUM SERIES - SWIVEL SEAT MOUNT TOP

- Low profile design allows 360° of rotation
- 360° rotation is regulated by dual locking devices - lift the positive lock lever to rotate. Drop the lever to lock in place in 10° increments. Secondary twist control offers variable drag adjustment and can be tightened down to lock in place.
- Internal Delrin Bearing Cup provides smooth, gall-free operation
- Plain or Powder Coated finish

#### SPECIFICATIONS :

**99026:** 360° Positive Lock Swivel Spider Mount Silver Powder Coat Finish  
**99027:** Internal Delrin Bearing Cup for 20000, 20001, 21000, 21001, 99025, 99026



99023

### STANDARD SERIES -SWIVEL MOUNT TOP

- 4 prong spider swivels 360° and locks positively
- Fits all Garelick 2 7/8" (7cm) diameter stanchion pedestal seat bases
- High tensile aluminum and all stainless hardware

**99023:** 360° Positive Lock Swivel Spider Mount Anodized Aluminum Finish  
**99028:** Delrin Bearing Set for 99023

## PEDESTAL OPTIONS



75635

### BLUE WATER ADJUSTABLE HEIGHT POSITIVE PIN TYPE LOCK

- Pin secures base at specific height in 1" increments
- Stainless steel lock pin locates securing hole easily
- Anodized protective finish helps prevent saltwater corrosion and weathering
- 2 7/8" (7cm) diameter ribbed stanchion tube, 9.25" (23cm) diameter 6 hole base plate

#### SPECIFICATIONS :

**75635 :** 12" - 17" (30 - 43cm) Height  
**75628 :** 18" - 23" (46 - 58 cm) Height

### ADJUSTABLE HEIGHT STANDARD FRICTION LOCK



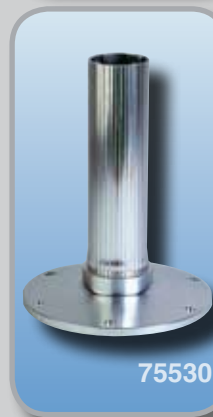
75535

- Seat raises or lowers, locks at desired height
- Anodized protective finish helps prevent saltwater corrosion and weathering.
- 2 7/8" (7cm) diameter ribbed stanchion tube, 9.25" (23cm) diameter 6 hole base plate.

#### SPECIFICATIONS :

**75535 :** 12" - 17" (30 - 43cm) Adjustable height  
**75528 :** 18" - 23" (46 - 58cm) Adjustable height

### FIXED OVERALL HEIGHT



75530

- Compatible with Garelick hardware
- Provides solid base of support for a variety of seat hardware
- Accepts Garelick fore and aft seat slides and 360° swivel spider combinations
- Accepts Seat Slides : 21000, 75080, 75081, 75082, 75083
- Accepts Spiders : 99023, 99026
- 2 7/8" (7cm) diameter ribbed stanchion tube, 9.25" (23cm) diameter 6 hole base plate

#### SPECIFICATIONS :

**75531 :** 9" (23cm) Overall Height  
**75530 :** 12" (30cm) Overall Height  
**75515 :** 15" (38cm) Overall Height  
**75532 :** 18" (46cm) Overall Height  
**75533 :** 24" (61cm) Overall Height  
**75534 :** 30" (76cm) Overall Height

**US PATENT #DES 367,841**

ABYC  
H31

HIGH  
TENSILE  
ALUMINUM

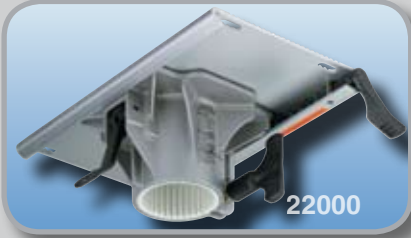
ANODIZED  
ALUMINUM  
FINISH



GARELICK  
EEZ-IN

# 2.875" PEDESTAL DIAMETER SMOOTH STANCHION SERIES SEAT HARDWARE

## SEAT SLIDE/SWIVEL COMBO OPTIONS



### MILLENNIUM SERIES - SEAT SLIDE SYSTEM

- Low profile design allows 360° of rotation and 6" of smooth, wobble-free fore and aft travel
- Heavy duty anodized aluminum slide plate has standard 5"x12" hole pattern to accommodate standard seat mounting holes
- Positive Lock Spider – rotates 360°, internal cup engages in 10° increments for positive stop lock (Secondary twist control offers variable drag adj. and can be tightened to lock in place)
- Internal Delrin cup provides smooth, gall-free operation.
- Meets ABYC-H31, Type A Standards & Garelick performance standards
- Available in either left- or right-hand operation
- Powder Coated finish
- Includes retaining hardware (99302)

#### SPECIFICATIONS :

Adds 1/2" (1.25cm) to Pedestal height.

**22000** : Positive Lock Slider & Spider Combination Left Hand Lever Silver Powder Coat Finish

**22001** : Positive Lock Slider & Spider Combination\* Right Hand Lever Silver Powder Coat Finish

**99127** : Internal Delrin Bearing Cup for 22000, 22001, 99036

**SLIDE** : 13.75" x 8" (35x20cm) slide plate, 5" x 12" (13x30cm) mtg hole pattern, 6" (15cm) travel

**SWIVEL** : 2 7/8" (7cm) diameter. \*When seated, right hand operates slide lever.

**US PATENTS #5,882,076 AND #5,884,887**



### STANDARD SERIES - SEAT SLIDE AND SWIVEL

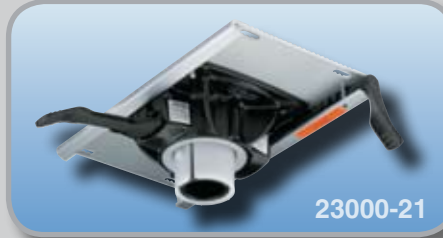
- Provides smooth fore and aft travel and 360° seat rotation
- Adds comfort and stability for any swivel boat seat
- Mounts underneath seat and on top of pedestal stanchion
- Compatible with any 2 7/8" (7cm) diameter tube
- Convenient handles provide solid locking at any position
- Meets ABYC-H31, Type A & Garelick performance standards
- Anodized aluminum for added protection from saltwater corrosion and weathering

#### SPECIFICATIONS :

Adds 1 5/8" (4cm) to height. Hole Pattern: 5" x 12" (13x30cm)

**75082** : 6" (15cm) Fore and Aft Travel 8.5" W x 8" L (22cm x 20cm)

**75083** : 7" (18cm) Fore and Aft Travel 8.5" W x 13" L (22cm x 33cm) Required on Roto molded Seat Models (Includes 75081 & 99023)



### EVOLUTION SERIES - SEAT SLIDE SYSTEM

- Fits all ribbed 2 7/8" diameter fixed height stanchion pedestal bases
- Smooth positive lock action slide – convenient spring loaded lock and ergonomic release lever – Wobble Free when locked
- Internal socket bearing engages for positive gear lock in 15° increments
- Spring loaded positive quick auto lock engages immediately
- Positive stop lock seat slide cam
- Meets ABYC-H31, Type A & Garelick performance standards
- High tensile aluminum, co-polymer internal socket bearing.
- Includes retaining hardware (99302)
- NOTE: Not available in retail POP packaging

#### SPECIFICATIONS :

Adds 1" (2.54cm) to Pedestal height.

**23000-21** : 360° Positive Lock Swivel Spider Mount w/ black E-coat Finish

**99237-21** : Internal Socket Bearing Cup

**SWIVEL** : High tensile aluminum 2 7/8" (7cm) diameter, plastic internal cup. All stainless hardware. \*When seated, right hand operates slide lever.

**US PATENT #6,877,811**



### RETAINING HARDWARE FOR SEAT SWIVELS

- Secures Swivel Seats to Stanchion Post while unlocked and free swiveling - prevents inadvertent detachment
- Attaches to 360° swivel spiders underneath boat seats
- Three styles – fits all 2 7/8" stanchion post "Standard" and "Millennium 2000" **GARELICK EE3-In** Brand Swivel Spiders
- Can be retro fit to **GARELICK EE3-In** Swivel Spider models
- Patent Pending



#### SPECIFICATIONS :

**99300** : for "Standard" 4 Prong Swivel Spiders. Fits model 99023 Swivel Spider, 750XX, 752XX Series Seat Bases, and 75082, 75083 Combination Seat Slide and Swivel Spider

**99301** : Fits models 99025, 99026, 99036 Swivel Spiders, 753XX, 754XX, 756XX Series Seat Bases

**99302** : for Millennium 2000 Series 20000, 20001, 21000, 21001, 23000, 23000-21, 99235, 99235-21, 22000, 22001

# 2.875" PEDESTAL DIAMETER SMOOTH STANCHION SERIES SEAT HARDWARE

## SWIVEL TOP OPTIONS



### MILLENNIUM SERIES - SWIVEL SEAT MOUNT TOP

- Low profile design allows 360° of rotation
- Heavy duty anodized aluminum slide plate has standard 5"x12" hole pattern to accommodate standard seat mounting holes
- 360° rotation is regulated by dual locking devices - lift the positive

lock lever to rotate. Drop the lever to lock in place in 10° increments. Secondary twist control offers variable drag adjustment and can be tightened down to lock in place.

- Internal Delrin Bearing Cup provides smooth, gall-free operation

#### SPECIFICATIONS :

**99036** : 360° Positive Lock Swivel Spider Mount Silver Powder Coat Finish  
**99127** : Internal Delrin Bearing Cup for 22000, 22001, 99036



### EVOLUTION SERIES - SWIVEL MOUNT TOP

- Fits all smooth 2 7/8" diameter fixed height stanchion pedestal bases
- Smooth positive lock action slide - convenient spring loaded lock and ergonomic release lever - Wobble Free when locked
- Internal socket bearing engages for positive gear lock
- Spring loaded positive quick auto lock engages immediately

- Meets ABYC - H31, Type A Seating Standards as well as extensive Garelick performance standards
- High tensile aluminum, co-polymer internal cup.
- Includes retaining hardware (99302) :
- NOTE: Not available in retail POP packaging

#### SPECIFICATIONS :

**99235-21** : 360° Positive Lock Swivel Spider Mount black e-coat Finish  
**99237-21** : Internal Socket Bearing Cup  
**US PATENT #6,877,811**



### STANDARD SERIES - SWIVEL MOUNT TOP

- 4 prong spider swivels 360° and locks positively
- Fits all Garelick 2 7/8" (7cm) diameter stanchion pedestal seat bases
- High tensile aluminum and all stainless hardware

**99023** : 360° Positive Lock Swivel Spider Mount Anodized Aluminum Finish  
**99028** : Delrin Bearing Set for 99023

## PEDESTAL OPTIONS



### BLUE WATER ADJUSTABLE HEIGHT POSITIVE PIN TYPE LOCK

- Pin secures base at specific height in 1" increments
- Stainless steel lock pin locates securing hole easily
- Anodized protective finish helps prevent saltwater corrosion and weathering
- 2 7/8" (7cm) diameter smooth stanchion tube, 9.25" (23cm) diameter 6 hole base plate

#### SPECIFICATIONS :

**75438** : 12" - 17" (30 - 43cm) Adjustable height



### ADJUSTABLE HEIGHT STANDARD FRICTION LOCK

- Seat raises or lowers, locks at desired height
- 2 7/8" (7cm) diameter stanchion tube, 9" (23cm) diameter base plate
- Anodized protective finish helps prevent saltwater corrosion and weathering.

#### SPECIFICATIONS :

**75436** : 12" - 17" (30 - 43cm) Adjustable height  
**75437** : 18" - 23" (46 - 58cm) Adjustable height



### FIXED OVERALL HEIGHT

- Compatible with Garelick hardware
- Provides solid base of support for a variety of seat hardware
- Accepts Garelick fore and aft seat slides and 360° swivel spider combinations
- 2 7/8" (7cm) diameter smooth stanchion tube, 9.25" (23cm) diameter 6 hole base plate

#### SPECIFICATIONS :

Accepts Seat Slides: 22000, 75080, 75081, 75082, 75083  
 Accepts Swivels: 99023, 99036

**75431** : H: 9" (23cm)      **75430** : H: 12" (30cm)  
**75415** : H: 15" (38cm)      **75432** : H: 18" (46cm)  
**75433** : H: 24" (61cm)      **75434** : H: 30" (76cm)



### LOW PROFILE PEDESTAL

- One piece casting for mounting seats as low as possible (4.75" Overall Height)
- Compatible with Garelick Hardware
- Provides solid base of support for a variety of seat hardware
- 2 7/8" (7cm) diameter smooth stanchion tube, 9.25" (23cm) diameter 6 hole base plate

#### SPECIFICATIONS :

Accepts Seat Slides: 22000, 75080, 75081, 75082, 75083  
 Accepts Swivels: 99023, 99036

ABYC  
H31

HIGH  
TENSILE  
ALUMINUM

ANODIZED  
ALUMINUM  
FINISH

CENTER

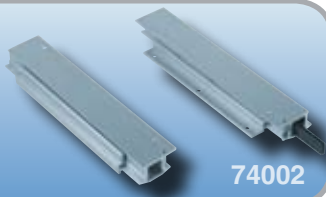
DECK

RUNABOUT

BASS



## TANDEM FORE & AFT SEAT SLIDE TRACK HARDWARE



74002

### DUAL LOCK OPTION



74001

- Provides fore & aft movement for double wide seat installations. Ideal for Double Wide Flybridge, Helm, or Pontoon Bucket "Love Seats." This low-profile, all-anodized aluminum precision track extrusion allows any width bench type seat to slide fore & aft 6" (15cm). Single action spring lever that travels with the seat, provides positive locking in 1" (3cm) increments.
- Perfect for seats mounted on a support deck box or molded-in helm stations.
- Provides fore & aft movement for any bench type seating
- Individually Boxed, Stainless Steel hardware included

**U.S. PATENT #6,460,818**

### SPECIFICATIONS :

#### SINGLE LOCK -

**74002** : 16.5" (42cm) L, 1.5" (4cm) H with Standard Single Lock Option, 6" (15cm) Travel

**74003** : 12.5" (30cm) L, 1.5" (4cm) H with Standard Single Lock Option, 7" (18cm) Travel

#### DUAL LOCK -

**74001** : 16.5" (42cm) L, 1.5" (4cm) H with Dual Lock Option, 6" (15cm) Travel, 24" Overall Width

HIGH  
TENSILE  
ALUMINUM

ANODIZED  
ALUMINUM  
FINISH



YACHT

PONTOON

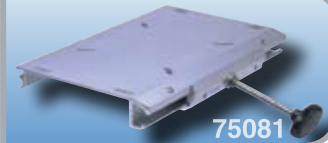
DECK

RUNABOUT

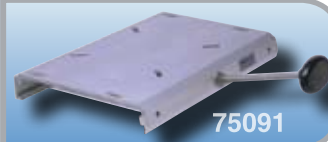
## LOW PROFILE SEAT SLIDE



75080



75081



75091

- Allows helm or boat seats to adjust fore and aft
- Slide mounts under seat in between seat and pedestal base
- Convenient handle provides solid locking at any position
- Compatible with most 360° spiders
- Wobble-Free Design/Operation
- Anodized aluminum with stainless steel hardware
- Spider swivel casting (**99023**, **99036**) not included

### SPECIFICATIONS :

**75080** : Standard Size 6" (15cm) Fore and Aft Travel 8.5" W x 8" L x 1.63" H (22cm x 20cm x 4cm)

**75081** : Full Length Size for roto-molded seats. 7" (18cm) Fore and Aft Travel 8.5" W x 13" L x 1.63" H (22cm x 33cm x 4cm) For use where add'l travel and any seat needing reinforcement underneath. Required on all Roto molded seats

**75091** : Full Length Size for roto-molded seats. 5" (13cm) Fore and Aft Travel 8.5" W x 13" L x 1.63" H (22cm x 33cm x 4cm) For Low Profile installations where slide mounts directly to deck. Lock handle is angled upward

HIGH  
TENSILE  
ALUMINUM

ANODIZED  
ALUMINUM  
FINISH



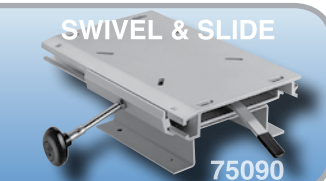
YACHT

PONTOON

DECK

RUNABOUT

## LOW PROFILE SEAT SLIDE AND LOCKING SWIVEL



### SWIVEL & SLIDE

75090



### SWIVEL ONLY

75096

- Allows helm or boat seats to adjust fore and aft
- Slide mounts under seat in between seat and pedestal base
- Convenient handle provides solid locking at any position
- Compatible with most 360° spiders
- Wobble-Free Design/Operation
- 6" Travel, standard size for wood or plastic seats
- Anodized aluminum with stainless steel hardware. Spider swivel casting not included

### SPECIFICATIONS :

**75090** : 7.5" (19cm) Fore and Aft Travel 8.5" W x 13" L x 3 7/8" H (22cm x 33cm x 10cm)

**75096** : **8 POSITION LOCKING SEAT SWIVEL** : 8" W x 7" L x 3.75" H (20cm x 18 cm x 9cm)

ANODIZED  
ALUMINUM  
FINISH



ALL BOATS

## COMMANDER SLIDE WITH LOW PROFILE SWIVEL



78203-30

- Commander slide system glides on stainless steel rails for rock solid, wobble free performance
- Top plate is 9.3" x 12"
- Slide has 6" of fore/aft travel with position locking at 1" increments
- Swivel is low profile, overall height is 3.63". Rotates 360 degrees with positive locking at 45 degree increments
- NOTE: Not available in retail POP packaging

MARINE  
GRADE  
HDPE

MARINE  
GRADE  
VINYL

ANODIZED  
ALUMINUM  
FINISH



YACHT

CENTER

# SEAT SUSPENSION SYSTEMS



## ACTIVE SEAT SUSPENSION SYSTEMS OFFER BOATERS NEW LEVELS OF COMFORT AND SAFETY IN ALL WEATHER AND WATER CONDITIONS

- Active Seat Suspension Systems absorb and minimize up to 75% of the shock, jolt, and vibration transmitted to the passenger from the forces of roll, pitch, and yaw.
- Active Seat Suspensions Systems reduce the feelings of seasickness and nausea by absorbing excessive movement with 1" of damped vertical travel.
- These systems are CAD designed, FEA proven, and precision engineered and tooled.
- Components are saltwater spray tested and UV stable; to help endure harsh marine environments.
- Made from rugged, high-tensile, anodized aluminum with stainless steel hardware.



77300



## PEDESTAL BASE MOUNTING OPTIONS: ACTIVE SEAT SUSPENSION UNIT

- Standard bolt hole pattern allows for mounting on top of pedestal and beneath any individual seat
- Features heavy duty forward hinge system allowing shock absorption to occur in the vertical plane only, eliminates sway and side tipping
- U.S. PATENT #6,042,093
- Includes provisions for mounting seats with 6" center hole pattern.
- Easily mounts to almost any current seat.

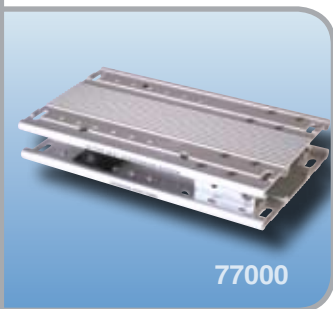
## FLOOR AND DECK MOUNTING OPTIONS

- Standard bolt hole pattern allows for easy mounting beneath seat to the deck, a box, or the floor of a boat
- Perfect for mounting beneath seat greater than 20" (51cm)
- Includes provisions for mounting seats with 6" center hole pattern

**77000** : Compact size and low profile design adds only 2" (5cm) of height. The outline is 13" x 7" (33 x 18cm) with standard 5" x 12 1/8" (13 x 31cm) slotted mounting hole pattern.

**77300** : For use with wider bench seats – 1/2 profile 13" x 3" (33 x 7cm) – Pair.

**99191** : Replacement foam seat shock – pair



77000

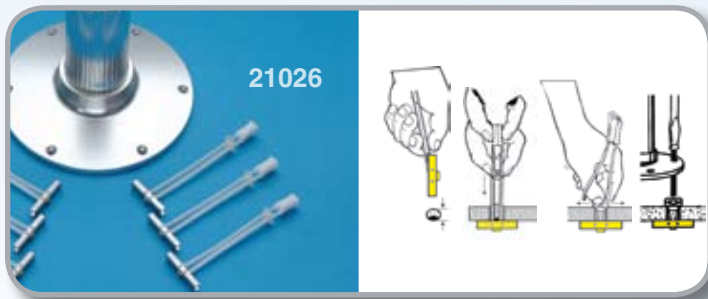
STAINLESS  
STEEL

ANODIZED  
ALUMINUM  
FINISH



**GARELICK**  
EE3-In

MARINE SEATING **43**  
ACTIVE SEAT SUSPENSION



21026

**TOGGLER BRAND STAINLESS STEEL TOGGLE BOLT**

- Positively secures seats and table bases to decks or any accessory to cabin walls. Made of 304 Stainless Steel
- Saves time and labor – Provides added strength
- Add reinforced safety and comfort to pedestal installations
- Works with all Garelick Seat Pedestal Bases

**SPECIFICATIONS :**

For deck or cabin thickness from 3/8" to 3 5/8" (1 - 9cm), requires 1/2" (13mm) holes

**BULK :**

**21021** : 1/4"-20 size 50 each, anchors only

**21025** : Metric 6M size 50 each, 6mm anchors only, use 13 mm hole.

**PAIR : PEDESTAL MOUNTING KIT**

**21022** : 1 pair, 1/4"-20 size anchors only for mounting any model Pedestal Seat Base. Poly bag and header card.

**6 PACK : PEDESTAL MOUNTING KIT**

**21026** : 6 each, 1/4"-20 size anchors only for mounting any model Pedestal Seat (sold in poly bag with header card)



75056

**DETACHABLE SOLID STANCHION PLATES**

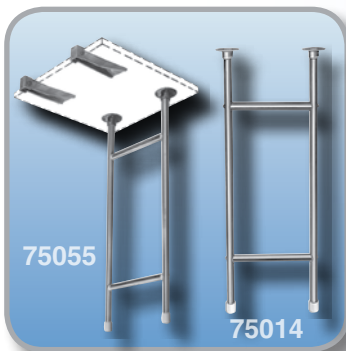
- 9.25" (23cm) diameter machined anodized aluminum, 3 stainless cap screws, and allen wrench included
- Adapts to all 2 7/8" (7cm) models, simply enlarge 6 base holes to 7/16" diameter
- Plate mounts to deck surface for base attachment
- Allows base and seat to be removed
- Adds reinforced safety and comfort to pedestal installations



78351

**DETACHABLE SOLID STANCHION PLATES**

- 12" (30.5cm) diameter machined anodized aluminum, 3 stainless cap screws, and allen wrench included
- Anodized aluminum plate provides a solid footing for the 4.0" commander system
- Plate mounts to deck surface for base attachment
- Allows base and seat to be removed
- Adds reinforced safety and comfort to pedestal installations



75055

75014

**SIDE MOUNT HELMSMEN SEAT & TABLE HDWR.**

- Aluminum support arms attach to bottom of seat or table
- Folding brackets attach to side of boat
- Stanchion legs fit sockets under seat or table
- Allows seat or table to fold against bulk head or coaming

**SPECIFICATIONS :**

**75014** : H-Leg and Sockets ONLY

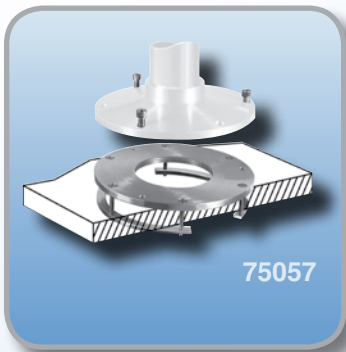
**75055** : Hardware and H-Leg (H: 32" (81cm) includes two mounting sockets)



75058

**SEAT BASE REINFORCEMENT ANGLES**

- Sandwiches deck between base mounting plate and rings
- Saves time and labor
- Easy topside installation 4" (10cm) diameter hole is cut in deck Rings line up under deck.
- Made of 3/16" x 1/2" (.5 x 1cm) 1018 stainless steel, pair
- Fits all 2 7/8" seat bases



75057

**SEAT BASE REINFORCEMENT RINGS**

- Sandwiches deck for positive reinforced installation
- Allows base and seat to be removed
- Anodized aluminum 9.25" (23cm) diameter 3/8" (1cm) thick, 3 stainless cap screws, allen wrench and backing brackets included
- Adapts to all 2 7/8" models
- 9.25" (23cm) diameter base



75156

**ANODIZED ALUMINUM QUAD SEAT BASE**

- Constructed from 1" Anodized aluminum
- HDPE platform supports low rise anodized aluminum no neck pedestal (4 3/4" H, 75404)
- Accepts 2 7/8" swivels and swivel/slide systems
- Fits all Garelick EEz-In seats

**SPECIFICATIONS :**

**75156** : 20"x20" leg spread. 13" height to top of pedestal



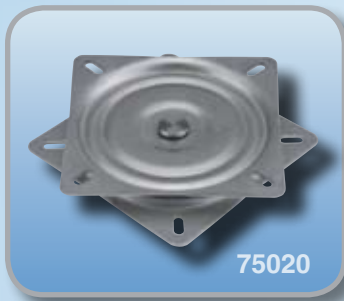
75047

**CHAIR STAND**

- Polished Aluminum Frame
- Contemporary, Updated Styling
- For Houseboats, Pontoons and Cruisers

**SPECIFICATIONS :**

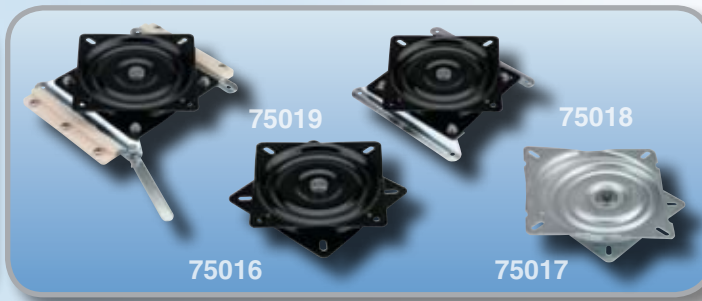
**75047** : 28" (71cm) height, 21" (53cm), leg spread includes 75016 top



### STAINLESS STEEL SEAT SWIVEL

- Heavy Duty for Offshore Market
- 304 Stainless Steel with stainless center rivet
- Rotates 360° - Fits most Standard Hole Patterns
- Self lubricated non-corrosive poly swivel bearings

**SPECIFICATIONS :**  
**75020 :** 7" x 7" (18 x 18cm)

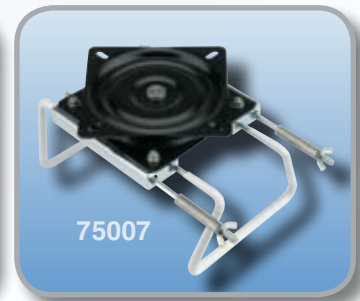


### UNIVERSAL BOAT SEAT SWIVELS

- Rotates 360° – Fits most standard seat hole patterns
- Self-lubricated, non-corrosive poly swivel bearings

**SPECIFICATIONS :**

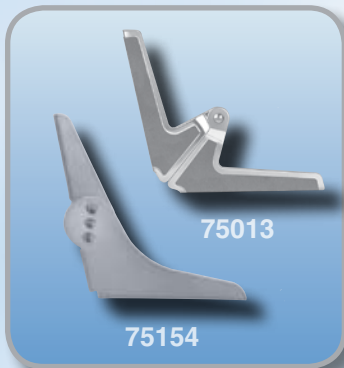
**75016 :** "Standard" – 6" x 6" (15 x 15cm)  
**75017 :** "Angled" – With 7° angle  
**75018 :** "Easy Mount" – Larger bottom half exposes four mounting holes  
**75019 :** "Removable" – Quick release mechanism allows seat to slide out thru plastic tracks mounted to boat



### ADJUSTABLE SEAT SWIVEL CLAMP

- Accepts standard boat seats, fits tank or bench tops
- Durable – All metal construction
- Quick mounting and dismounting, includes 360° swivel
- Vinyl covered clamps
- Width adjusts from 8" - 18" (20 - 46cm)

**SPECIFICATIONS :**  
**75007 :** 6" wide x 6" length (15 x 15cm) swivel



### SEAT HINGES

- Folding aluminum with stainless rivets – Pair
- Made to bolt into poly or plywood seat substrates

**SPECIFICATIONS :**  
**75013 :** For closed back or helm seats – Anodized Aluminum  
**75154 :** For open back seats – Anodized Aluminum



### STANCHION FOOTREST

- Eliminates dangling feet – Adds comfort at helm
- Aluminum casting fits all fixed height 2 7/8" (7cm) dia. stanchion
- Traction grooved stepping surface

**SPECIFICATIONS :**  
**75004 :** Aluminum Casting 14" (35cm) Wide 11.3" (28cm) Deep



### STANCHION FOOTREST

- Eliminates dangling feet – Adds comfort at helm
- Designed with the same style, performance and durability as the rest of the remarkable Commander system
- Traction grooved surface
- Fits all 4.0" fixed height Garelick/EEZ-in seat bases

**SPECIFICATIONS :**  
**78350 :** 12 1/8" (43.9cm) Wide x 15 1/2" (39.4cm) Long x 1" (2.5cm) thick



### STAINLESS STEEL SEAT SUPPORT SWING LEG

- Support for fold-down seating
- Designed for right or left folding
- Can be cut to length
- Locks in down or storage position

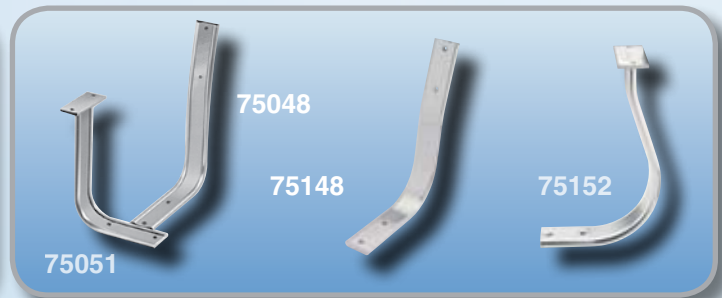
**SPECIFICATIONS :**  
**99129 :** Seat Support Swing Leg 1" (3cm) diameter stainless leg with white rubber tip. Stainless button lock and mounting bracket. 2.25" D x 1.375" W (6 x 4cm). 13" (33cm) H  
**SPECIAL LENGTHS AVAILABLE IN QUANTITY**



### GIMBALS

- Chrome plated Brass
- Fits all **GARELICK EEZ-In** seats

**SPECIFICATIONS :**  
**75010 :** Tube attachment type  
**75011 :** Flat surface attachment type



### EXTRUSION SEAT AND BACK SUPPORTS

- Anodized Aluminum extrusion 2" x .5" (5 x 1cm), formed and drilled
- To make seats with open back style – Pair

**SPECIFICATIONS :**  
**75048 :** Straight back supports  
**75051 :** Straight arm extrusions  
**75148 :** Curved back supports  
**75152 :** Curved arm extrusions



# YACHT TABLE AND DECK HARDWARE



## ADJUSTABLE TABLE BASE GAS RISE OR MANUAL

- Converts dinettes to berths
- 9" (23cm) diameter cast aluminum base on each end for support
- Locks any height from 14.5" to 29.5" (37 - 75cm)
- 2.875" (7cm) smooth stanchion tube
- In lower position inside tube goes below deck 6" (15cm)

### SPECIFICATIONS :

**75325** : Manual rise with ribbed stanchion. 14.5" to 30.75" (37cm - 78cm). Protrudes 6" (15cm) below deck

**75425** : Sealed gas-powered rise with ribbed stanchion. 14.5" to 29.5" (37cm - 75cm). Protrudes 8.5" (22cm) below deck (63 lb. gas spring)

**75025** : Manual rise with smooth polished finish. 14.5" to 30.75" (37cm - 78cm). Protrudes 6" (15cm) below deck

**75225** : Manual rise with smooth polished finish. 14.5" to 30.75" (37cm - 78cm). Protrudes 6" (15cm) below deck

## GAS RISE YACHT TABLE BASE

- Provides adjustable height in salon/cabin areas
- Ultra smooth gas powered operation adjustable 20"- 29" (51-74cm)
- Self-standing 19" (48cm) square base, 3/8" thick with 9" x 13" (23 x 33cm) table top support, 1/4" thick
- Polished and Anodized finish to resist saltwater corrosion
- Patent Pending

### SPECIFICATIONS :

**75460** : 3/8" thick anodized aluminum plate with 3.5" stanchion tube, twist lock T-Handle; 40# gas spring



## ELECTRIC ADJ. TABLE BASE SYSTEM

- Provides electrically operated adjustable table system for salon and cabin areas
- 3.5" (9 cm) outside diameter anodized bright polish stanchion tube with 2 7/8" diameter inside tubing.
- 10.5" (27 cm) diameter base casting for extra stability
- Linear actuator included
- Patent Pending

### SPECIFICATIONS :

**78500** : Range of travel is 12.5" to 27.5" (32-70 cm). System protrudes 17" (44 cm) below deck. Table mounting plate is detachable and can be locked down to prevent rotation

**78501** : Range of travel is 15.38" to 30.38" (39-78 cm). System protrudes 10" (26 cm) below deck. Table mounting plate is attached permanently to column



## MID-RANGE GAS RISE TABLE SYSTEM

- Provides adjustable height in salon/cabin areas
- 3 1/2" outside diameter anodized bright polish tubing
- 2 7/8" inside diameter anodized bright polish tubing
- Gas Spring for lift
- Cam lock collar locks height adjustment in place
- Can be mounted directly to deck for permanent mount or to an anodized aluminum plate for portable use
- Table top mount is a permanent anodized aluminum plate

### SPECIFICATIONS :

**75392** : Height Adjustment : 12 1/2" - 26", 63# gas spring, Anodized aluminum permanent top plate, 11" x 15", 9 1/4" round base plate mounted directly to deck, Cam lock collar locks height adjustment in place. Tube protrudes 11 1/2" below deck.

**75394** : Height adjustment 14 1/2" - 28 1/2", 43# gas spring, Anodized aluminum permanent top plate, 11" x 15", 9 1/4" round base attached to stanchion for mounting to deck, Cam lock collar locks height adjustment in place. Tube protrudes 9 1/2" below deck.



## TWIN TOWER TABLE BASE

- Provides adjustable height in salon/cabin areas
- Ultra-smooth gas powered operation, table height adjusts from 18" to 26.5"
- Single knob, remote actuation system adjusts both pedestals in unison
- 3 1/2" diameter anodized bright polish tubing
- Self-standing with 2-D shaped anodized aluminum base plates, 7" x 20"

### SPECIFICATIONS :

**75451** : Anodized aluminum top plate is 12" x 37" x 1/4", designed to fit table size of 41" x 24"; Two 28# gas springs

## TWO STAGE GAS RISE YACHT TABLE PEDESTAL – ADJUSTABLE HEIGHT 4.0 COMMANDER SERIES



- Robust design provides adjustable height in salon/cabin and back deck areas. – Lift – adjust height – lock with polished stainless handles
- Smooth gas powered operation adjustable full range 15" – 30" (38 - 76cm)
- Polished and anodized finish resist saltwater corrosion

### SPECIFICATIONS :

**75470** : Range of travel 15" – 30" (38 - 76cm), 12" diameter base casting with 4", 3.5" & 2.875" diameter stanchion tubes, Top plate surface 9" x 13" (23 x 33cm)



HIGH  
TENSILE  
ALUMINUM

ANODIZED  
ALUMINUM  
FINISH

304  
STAINLESS



## QUICK RELEASE TABLE PEDESTAL SYSTEM



75640

- Patented, revolutionary table hardware system (**US PATENT #7,013,831**)
- Quick release levers allows effortless take-down of table system for storage
- Simple to use, simple to install.
- Low-Profile deck ring creates minimal interference when table is stowed
- No large center hole in deck as is common with other table hardware systems
- Marine grade polymer components resist corrosion
- 2 1/4" ribbed Anodized aluminum stanchion is tapered at both ends
- 9 1/4" and 13" stanchion posts available for converting dinette into bunk use
- Individual components available if additional mounting locations are desired

### SPECIFICATIONS :

**75640** : Complete system includes: deck ring, socket base, table mounting socket, 25.5" stanchion tube

**75641** : Deck Ring Cover, Tan

**75642** : Deck Ring Cover, Black

**75643** : 13" Stanchion post, 2.25" diameter

**75644** : 9.25" Stanchion post, 2.25" diameter

**75645** : Surface mount socket base w/ deck ring, 6.625" diameter

**75646** : Surface mt. deck ring, 6.25" diameter

**75647** : 25.5" Stanchion post, 2.25" diameter. Deck to underside of table is 27" installed.

**75648** : Table adapter socket, 7.25" diameter

**75650** : Includes complete system 75640 and 15" x 28" (38 x 71cm) rectangular white polymer table top and two recessed cup holders

**75320** : Includes complete system 75640 and 18"x30" (46cm x 76cm) oval, acrylic-coated ABS plastic table top with two recessed cup holders

**75321** : Includes complete system 75640 and 16"x32" (41cm x 81cm) rectangular, ABS plastic table top with four recessed cup holders



75641

75642



27"

75650



75320



75321

HIGH  
STRENGTH  
COMPOSITE

HIGH  
TENSILE  
ALUMINUM

ANODIZED  
ALUMINUM  
FINISH



**GARELICK**  
EEZ-In

TABLE HARDWARE **47**  
QUICK RELEASE & SIDE MOUNT TABLE HARDWARE

# STOWABLE MARINE TABLE HARDWARE



## TABLE PEDESTALS FOR LARGER BOATS : 2.875" POST & 9 1/4" BASE

- Provides salon areas and pontoon decks with removable dinette tables
- Engineered for marine use
- 3 piece, all-aluminum provides solid table base
- Fluted profile stanchion with protective anodized finish
- Quick stowage

### PART NO.

- 75350\*** Flush Mount Base with Fluted Anodized Tube, complete 3-piece set  
**75351** Surface Mount Base with Fluted Anodized Tube, complete 3-piece set  
**75373\*\*** Fluted Taper Stanchion Post for Conversion to "Bunk" Height  
**75374\*\*\*** Fluted Taper Stanchion Post for Conversion to "Bunk" Height  
**75355\*\*** Flush Mount taper Socket Base ONLY  
**75356** Surface Mount taper Socket Base ONLY  
**75357\*\*** Fluted Taper Stanchion Post ONLY  
**75358\*\*\*** Fluted Taper Stanchion Post ONLY

### DESCRIPTION

### OVERALL HEIGHT

- 30" (76CM)**  
**30" (76CM)**  
**13" (33CM)**  
**9.25" (23CM)**

- 30" (76CM)**  
**28.75" (73CM)**

\* Flush mount bases require drilling into deck and extend 2.75" below deck \*\*For use with 75355 type bases \*\*\*For use with 75356 type bases



## TABLE PEDESTALS FOR SMALLER BOATS : 2.25" POST & 7" BASE

- Provides salon areas and pontoon decks removable dinette tables
- Engineered for marine use
- 3 piece, all-aluminum provides solid table base
- Fluted profile stanchion with protective anodized finish
- Quick stowage

### PART NO.

- 75340\*** Flush Mount Base with Fluted Anodized Tube, complete 3-piece set  
**75341** Surface Mount Base with Fluted Anodized Tube, complete 3-piece set  
**75343\*\*** Fluted Taper Stanchion Post for Conversion to "Bunk" Height (Flush Mount)  
**75344\*\*\*** Fluted Taper Stanchion Post for Conversion to "Bunk" Height (Surface Mount)  
**75345\*** Flush Mount taper Socket Base Only  
**75346** Surface Mount taper Socket Base Only  
**75347\*\*** Fluted Taper Stanchion Post ONLY (Flush Mount)  
**75348\*\*\*** Fluted Taper Stanchion Post ONLY (Surface Mount)

### DESCRIPTION

### OVERALL HEIGHT

- 30" (76CM)**  
**30" (76CM)**  
**13" (33CM)**  
**9.25" (23CM)**

- 30" (76CM)**  
**28.75" (73CM)**

\* Flush mount bases require drilling into deck and extend 2.75" below deck \*\*For use with 75345 type bases \*\*\*For use with 75346 type bases



## WHITE POLYMER TABLE WITH STOWABLE PEDESTAL

- Provides salon areas and pontoon deck with removable dinette table (Includes two recessed cup holders. 3" (8cm) Dia.)
- Complete table 28" x 15" (71 x 38cm) with pedestal
- 7" (19cm) diameter cast aluminum base on each end
- Anodized finish to resist saltwater corrosion

### SPECIFICATIONS :

**75349:** 30" (76cm) Height, Fluted Anodized Tube, 2.25" (5.75cm) Diameter



## STORAGE BRACKETS

- Mount to side coaming or transom for storing table pedestals
- High density black delrin

### SPECIFICATIONS :

**99193 :** 2 1/4" (6cm) storage mounting brackets

ANODIZED  
ALUMINUM  
FINISH

HIGH  
TENSILE  
ALUMINUM

ALL BOATS

## BUILD YOUR OWN 2.875" TABLE HARDWARE SYSTEM



99023



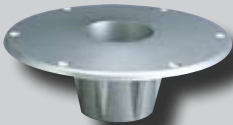
75442



75445



75446



75355



75356

- Tapered socket design for wobble free solid support
- Table top support bracket- rotates 360° and locks
- Fixed height or gas rise adjustable height options
- Fluted profile 2 7/8" (7cm) diameter stanchion tube
- Anodized finish to resist saltwater corrosion

### SPECIFICATIONS :

**75442** : Table top mounting bracket

**75446** : 28" (71cm) fixed height fluted taper stanchion post

**75445** : Gas rise stanchion- adjustable 19" – 29" (48-74cm), 29# gas spring.

**75355** : Flush mount taper socket base

**75356** : Surface mount taper socket base

ANODIZED  
ALUMINUM  
FINISH

HIGH  
TENSILE  
ALUMINUM



## SIDE MOUNT TABLE LEG SYSTEM



75359

- Allows installation of table system to any vertical surface (coaming)
- Consists of mounting bracket, angled table leg and oval acrylic-coated ABS plastic table top with two recessed cup holders
- Table leg removes from side mount bracket and table top removes from table leg for stowing when not in use
- Spring loaded locking pin holds table leg in place

### SPECIFICATIONS :

**75337** : Stainless Steel table leg is 2.25" diameter stainless steel with 18" x 30" oval, acrylic coated ABS table top. When mounted table leg extends out 16.5" from vertical surface. Table leg height is 19.25". Installed height of table will be 16", plus distance from deck to mounting bracket location plus thickness of table top.

**75359** : Anodized aluminum table leg with 18" x 30" oval acrylic coated ABS table top.

**75402** : Mounting bracket is polished 304 stainless steel. Mounting holes are spaced 4" W x 3" T. Overall outside dimensions of mounting bracket are 5" W x 4" T, 1/4" thick.

**75648** : Marine grade polymer table adapter socket, 7.25" diameter



75402



75346



75648



STAINLESS  
STEEL

ANODIZED  
ALUMINUM  
FINISH



## STOWABLE COCKPIT TABLE SYSTEM



75400



75405

75375

- Provides pontoon deck and salon areas w/ removable dinette table
- Anodized finish to resist saltwater corrosion

### SPECIFICATIONS :

**75400** : Side Mount Installation – Complete table with coaming wall bracket. 18" x 30" (46cm x 76cm) oval acrylic top

**75401** : Side Mount Bracket Only – 5" H x 4.75" W x 2.56" D (15 x 12 x 6.5 cm)

**75405** : Deck Mount Installation – Complete table with flush mount deck bracket. 18" x 30" (46cm x 76cm) oval acrylic top

**75375** : Flush Mount Square Socket Base – 6" (15cm) square mount for 2.25" (6cm) diameter tube for use with #75405

**TABLE TOP:** 18" x 30" oval acrylic coated ABS white table top.

**STANCHION TUBE AND BRACKET:** Fluted 2.25" (6cm) diameter anodized tube 25" (64cm) height. Anodized wall bracket 5" H x 4.75" W x 2.56" D (15 x 12 x 6.5 cm)

ANODIZED  
ALUMINUM  
FINISH

HIGH  
TENSILE  
ALUMINUM



GARELICK  
Eezy-In

TABLE HARDWARE **49**  
STOWABLE MARINE TABLE HARDWARE



# DECK CHAIR & TABLE COLLECTION



## FOLDING DECK TABLES : MELAMINE TOP SERIES



50410

### COMPACT SIZE IS IDEAL FOR DECKS, INSIDE CABINS, OR PICNICS ASHORE!

- Durable hard Finish Top is sealed watertight
- Top: Thermofused, white melamine is permanently bonded to core on both sides, edge finished with molded sea lip.
- Legs: Rugged 7/8" diameter aluminum, folds flat, plastic tips.

#### SPECIFICATIONS :

- RECTANGULAR TOPS :**  
**50400:** Table is 16" x 24" (41 x 61cm) and 16" (41cm) high  
**50405:** Table is 16" x 32" (41 x 81cm) and 21.5" (55cm) high
- ROUND TOP :**  
**50410:** Table is 24" (61cm) round and 16" (41cm) high



50405



50400

HIGH TENSILE ALUMINUM



## EZ-In DESIGNER SERIES PADDED DECK CHAIR - ANODIZED ALUMINUM



35029-62

- Lightweight, sturdy and very comfortable
- One piece canvas back with 24" (61cm) high frame
- 1" thick foam padded back and thigh support for added comfort
- Double leg and front cross bar frame for stability, easy to stow
- Beautifully sewn olefin woven fabric, tastefully appointed with embroidered code flag design and contrasting accent trim.
- 1" (3cm) diameter, corrosive resistant folding anodized aluminum tube frame, poly tips
- Varnished hardwood arms

### SPECIFICATIONS :

**35029-62** : 16" (41cm) Seat Height  
**COLORS** : 62 - Navy Blue w/ Red Trim

### REPLACEMENT TIPS FOR 1" DIA. GARELICK DECK CHAIR LEGS

**76010** : package of 4, Premium Chair Tips - White Poly  
**76011** : package of 4, Premium Chair Tips - Rubber  
**76012** : package of 2, Premium Double Leg Chair Tips - White Poly



76012

ANODIZED ALUMINUM FINISH  
 ALL BOATS

## MARINER CHAIR WITH WEATHERPROOF SEWN CUSHIONS



48106-61

- Anodized frame resists the elements
- Beautiful sewn cushions and arm rests
- HDPE seat and back substrates resist rot and warpage
- Eight legged frame provides extra stability
- Firm resilient 3.5" (9cm) foam
- Marine grade vinyl
- Durable 1" (3cm) aluminum double leg frame
- Chair folds for stowage, dual locks prevent folding during use

### SPECIFICATIONS :

Overall width 26" (66cm); Seat - W: 19" (48cm), D: 15.5" (39cm)

**48106-61** : Anodized frame  
**75010** : Chrome plated brass gimbal (optional)  
**COLORS** : 61 - White



MARINE GRADE VINYL  
 ANODIZED ALUMINUM FINISH  
 ALL BOATS

GARELICK  
 EZ-In

## TELESCOPING ADJUSTABLE LENGTH BOAT HOOKS FOR COMPACT STOWAGE



### PREMIUM TELESCOPING BOAT HOOKS

**55170:** 8 FT 3.5' to 8' (107 - 244cm)

**55175:** 12 FT 56" to 12' (142 - 366cm)

### HEAD TYPE

Marine Composite

Marine Composite

### SECTIONS

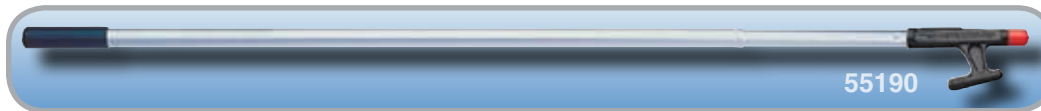
3

3

### DIAMETERS

1" - 1 1/8" - 1 1/4" (25 - 29 - 32mm)

1" - 1 1/8" - 1 1/4" (25 - 29 - 32mm)



### STANDARD TELESCOPING BOAT HOOKS

**55190:** 7.5 FT 4' to 7.5' (122 - 229cm)

### HEAD TYPE

Marine Composite

### SECTIONS

2

### DIAMETERS

1" - 1 1/8" (25 - 29mm)



### STD. FIXED LENGTH BOAT HOOKS

**55004:** 4 FT (122cm)

**55006:** 6 FT (183cm)

**55008:** 8 FT (244cm)

### HEAD TYPE

Marine Composite

Marine Composite

Marine Composite

### SECTIONS

1

1

1

### DIAMETER

1" (25mm)

1" (25mm)

1" (25mm)



### LIFETIME HOOK GUARANTEE

If our **Eg-In** hook head should ever break, simply send the broken piece to us for a free replacement

### PREMIUM MULTI-PURPOSE BOAT HOOK HEAD

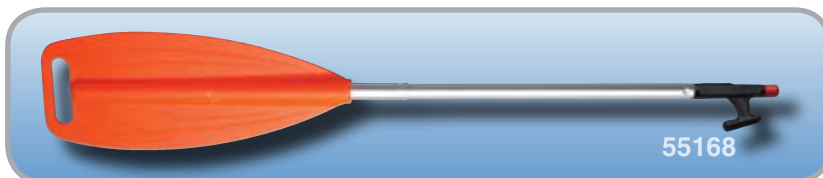
- Wide gap to grab large objects or cleats
- 3/4" acme threaded head for screw on brush, broom, or mop
- Accepts Wichard 4" snap hook (#92326)
- Non-corrosive UV safe marine composite
- Premium red cushioned tip

### AVAILABLE ON ALL MODELS

**99046** : Replacement head

HIGH  
STRENGTH  
COMPOSITE

## COMPACT EMERGENCY PADDLE/BOAT HOOK COMBO



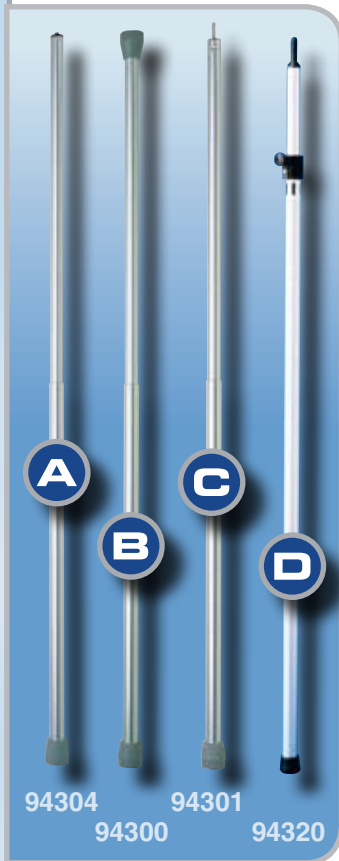
SIZE	HEAD/HANDLE TYPE	SECTIONS	DIAMETERS
<b>EMERGENCY TELESCOPING PADDLE</b>			
<b>55160:</b> 48" to 72" (122 - 183cm)	Marine Composite	2	7/8" - 1" (22 - 25mm)
<b>55161:</b> 36" to 53" (91 - 135cm)	Marine Composite	2	7/8" - 1" (22 - 25mm)
<b>EMERGENCY TELESCOPING PADDLE AND BOAT HOOK</b>			
<b>55168:</b> 32" to 49" (81 - 124cm)	Marine Composite w/ Head	2	1" - 1 1/8" (25-29mm)
<b>COMPACT PWC PADDLE</b>			
<b>55167:</b> 25" to 40" (63 - 102cm)	Marine Composite	2	1" - 1 1/8" (25-29mm)

ANODIZED  
ALUMINUM  
FINISH

HIGH  
STRENGTH  
COMPOSITE

ALL BOATS

## BOAT COVER SUPPORT POLES



- Keeps weather covers tight and helps protect boat interiors
- Eliminates pockets that trap water and cause damage
- Twist to lock and unlock; telescopes to desired length
- Three style tips - Rubber, pin for grommets, dot fasteners - Snap on
- Anodized aluminum resists corrosion

94304 94301  
94300 94320



### **A** SNAP-ON TIP ADJUSTABLE ALUMINUM BOAT COVER SUPPORT POLES WITH SNAP-ON DOT FASTENER

**94304:** 26" to 48" (66 - 122cm) Dot Fastener/Snap on  
**94305:** 36" to 64" (91 - 163cm) Dot Fastener/Snap on



### **B** RUBBER TIP ADJUSTABLE ALUMINUM BOAT COVER SUPPORT POLES WITH RUBBER TIP END

**94300:** 26" to 48" (66 - 122cm) Rubber Tip End  
**94302:** 36" to 64" (91 - 163cm) Rubber Tip End



### **C** PIN TIP FOR GROMMET ADJUSTABLE ALUMINUM BOAT COVER SUPPORT POLES WITH 3/8" GROMMET TIP END

**94301:** 26" to 48" (66 - 122cm) 3/8" Grommet Pin End  
**94303:** 36" to 64" (91 - 163cm) 3/8" Grommet Pin End



### **D** 3-IN-1 TIP 3-IN-1 BOAT COVER SUPPORT POLE\*

**94320:** 30" to 60" (73 - 146cm) Rubber Tip, 3/8" Grommet Pin, and Dot Fastener/Snap on Ends

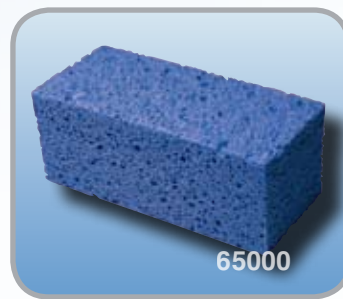
\* Twist thumb screw to lock and unlock; pole telescopes to desired length

ANODIZED  
ALUMINUM  
FINISH  ALL BOATS



### ALUMINUM, STAINLESS, & CHROME POLISH 65010

- Shines metal better than new
- Cleans, waxes, and polishes in one step
- Removes and prevents pitting
- Non abrasive, no acids, 8 oz. can



### BOAT BAILING SPONGE 65000

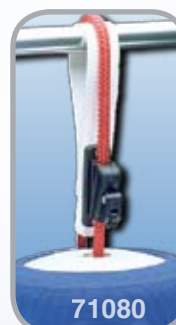
- Absorbs 24 ounces of water
- Makes removal of water and cleaning jobs easier
- Floats - 7.75" x 3.75" x 3" (20 x 10 x 8cm)



### SECURING STRAPS

- Holds gear in place - Line coils, life vest, fish rods and deck chairs
- Turn snap opens and closes strap to lock item in place
- White vinyl strap with plated brass swivel snaps. Pair.

**SPECIFICATIONS :**  
**71069 :** For Rail / Lifeline mounts - Fixed  
**71077 :** For Rail / Lifeline mounts - Movable



### FENDER HEIGHT ADJUSTER

- Raises or lowers boat fenders with ease!
- Automatically locks in place at desired height
- Eliminates tying and untying fender lines
- Simple locking lever lets line slide down and lock in place
- Handles: Hollow braid lines up to 1/2" (1cm) diameter Solid braid lines up to 3/8" (1cm) diameter
- Rust free brass locking ball

**SPECIFICATIONS :**  
**71080 :** For Rails and Life lines. Vinyl strap with easy on-off snap **US PATENT # 344671**



### RING BUOY HOLDER

- Holds Type IV throw type ring buoys
- Universal size - Fits all rings up to 30" (76cm) diameter
- Hardware fits 7/8" (2cm) or 1" (3cm) vertical or horizontal stanchions or screws to side of deckhouse

**SPECIFICATIONS :**  
**71066 :** Coated white aluminum with black nylon safety strap.



### UTILITY MOUNTING CLIPS

- Holds anything round - 3/4" to 1 1/4" (2 - 3cm) diameter
- Coated white spring steel
- Packaged in pairs



**GARELICK**  
EEz-In

# OUTBOARD MOTOR ACCESSORY COLLECTION



## PERFORMANCE ON DEMAND!

### SATISFIED CUSTOMERS, YEAR AFTER YEAR

"I thought I'd let you all know how very satisfied I am with the motor lift system. It is working wonderfully. The location and height we installed it, worked out perfectly! This past weekend we trolled with it both days in 4' to 5' seas. The motor never got washed over and the prop never came out of the water either. Everyone at Knife River Marina is very impressed and a bit jealous. I hear lots of (oo-ahas) and have had several inquiries about your product. I think I'll be seeing more of your motor lifts in our marina soon."

**Joe Perrault** Lakeland, MN  
- Regarding Model 71095 (PG 90)

## FOR AUXILIARY MOTORS - BUILT TO PERFORM

"An Outboard Bracket – The handiest way to equip a small sailboat with auxiliary power – or a fishing craft with a low-powered trolling engine – is to mount an outboard motor on the transom by means of a retractable bracket. This kind of bracket allows the boatman to lift the motor out of the water when it is not in use without removing it from the bracket." – *Time/Life Library of Boating*

For over 35 years, **GARELICK EEz-In** has led the field in Auxiliary Outboard Motor Brackets! As outboard motors have changed so has our selection of brackets. We now offer five distinct styles ranging from manual lift/lower models to hydraulic powered systems designed for heavier, high torque, 4 stroke motors.

## SUPERIOR PRODUCTS DURABLE MATERIALS

304  
STAINLESS

ANODIZED  
ALUMINUM  
FINISH

MARINE  
GRADE  
HDPE

HIGH  
STRENGTH  
COMPOSITE

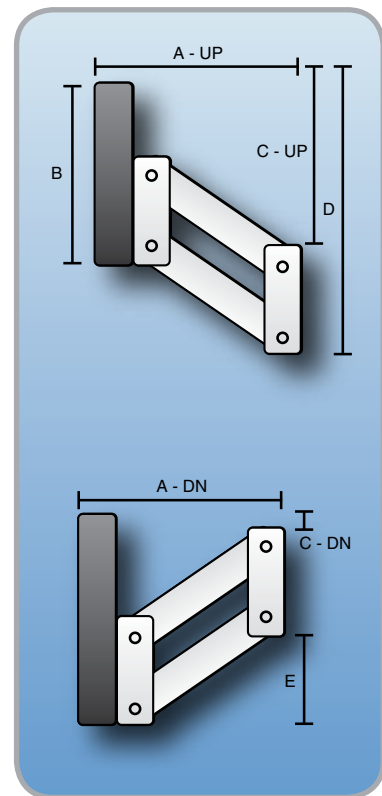
STAINLESS  
STEEL

HIGH  
TENSILE  
ALUMINUM

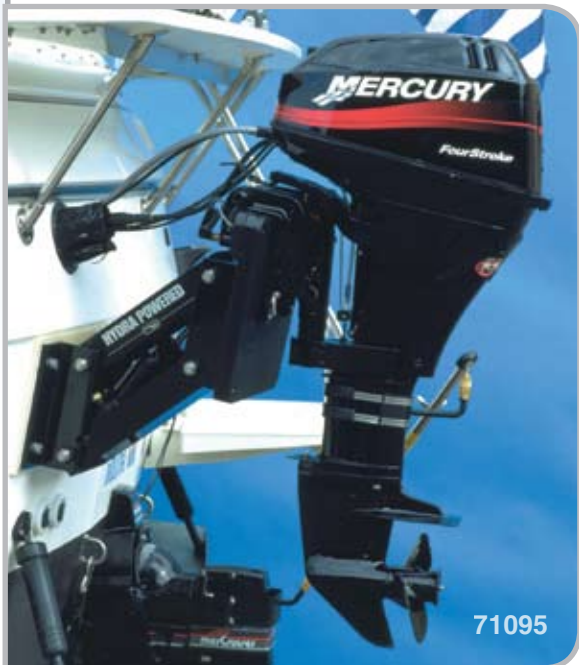
Model	Page #	Product Name	Capacity (HP)	Capacity (lbs)	4-Stroke Motors	2-Stroke Motors	Vertical Travel
71040	59	Aluminum Auxiliary Motor Bracket	to 8	59		●	8.5"
71042	59	Aluminum Auxiliary Motor Bracket	7.5 to 12	82		●	14.25"
71039	59	Stainless Steel Auxiliary Motor Bracket	7.5 to 12	82		●	14.25"
71074	60	Stationary Outboard Motor Bracket	to 15	75		●	Fixed
71075	60	Stationary Outboard Motor Bracket	to 15	75		●	Fixed
71078	60	Stationary Outboard Motor Bracket	to 15	75		●	Fixed
71056	59	Stainless Steel Auxiliary Motor Bracket	7.5 to 20	115		●	11.25"
71057	59	Aluminum Auxiliary Motor Bracket	7.5 to 20	115		●	11.25"
71033	59	Stainless Steel Auxiliary Motor Bracket	7.5 to 25	118		●	11.25"
71095	56	Hydra Powered Outboard Motor Bracket	to 25	148	●	●	13.25"
71091	58	Motor Bracket for 4-Stroke Motors	7.5 to 25	175	●	●	15.5"
71092	57	Manual "Easy Pump" Hyd. Lift Motor Bracket	7.5 to 25	175	●		14"
71090	58	Motor Bracket for 4-Stroke Motors	7.5 to 30	169	●	●	9.5"
71096	56	Hydra Powered Outboard Motor Bracket	25 to 40	248	●	●	13.25"

Model	Page #	A	B	C	D	E
71033	59	8" : UP 12 7/8" : DOWN	10 3/4"	12" : UP 1 1/2" : DOWN	19 7/8"	1 1/4"
71039	94	8 5/8" : UP 15" : DOWN	10 3/4"	14 1/8" : UP 11/16" : DOWN	22"	2"
71040	59	6 1/8" : UP 9 3/4" : DOWN	10 3/4"	9 9/16" : UP 1" : DOWN	18 9/16"	1 1/2"
71042	59	8 1/4" : UP 14" : DOWN	10 3/4"	12 11/16" : UP -11/16" : DOWN	19 5/8"	2 1/2"
71056	59	8 : UP 12 7/8" : DOWN	10 3/4"	12" : UP 1 1/2" : DOWN	19 7/8"	1 1/4"
71057	59	7 7/16" : UP 12" : DOWN	10 3/4"	10 5/8" : UP -11/16" : DOWN	19 5/8"	2 1/2"
71074	60	FIXED	9 1/2"	FIXED	FIXED	FIXED
71075	60	FIXED	9 1/2"	FIXED	FIXED	FIXED
71078	60	FIXED	9 1/2"	FIXED	FIXED	FIXED
71090	58	7 3/4" : UP 13 5/8" : DOWN	10 3/4"	12 1/4" : UP 2 5/8" : DOWN	21 1/4"	0"
71091	58	10 1/8" : UP 16 7/8" : DOWN	12"	16" : UP 7/8" : DOWN	25 3/4"	2 1/4"
71092	57	10 1/8" : UP 16 7/8" : DOWN	12"	16" : UP 7/8" : DOWN	25 3/4"	2 1/4"
71095	56	14 1/8" : UP 17 1/4" : DOWN	14"	13" : UP -9/16" : DOWN	22 1/2"	5 1/4"
71096	56	14 1/8" : UP 17 1/4" : DOWN	14"	13" : UP -9/16" : DOWN	22 1/2"	5 1/4"

## DIMENSIONS



# HYDRA POWERED ASSISTED OUTBOARD MOTOR BRACKET



## DESIGNED FOR THE DISCRIMINATING BOATER WHO DEMANDS THE BEST!

- Effortless operation – raises and lowers auxiliary motors in less than 20 seconds
- 12 volt self contained marinized hydraulic actuator
- Designed for 4-Stroke motors, wide stance provides stability
- Two models – handles up to 40 H.P. motors
- Heavy duty 1/2" thick 6061 T6 structural aluminum extrusion
- Triple coat protective finish (anodized, E Coat, powder coated)
- Aircraft stainless steel hardware and engineered bronze bushings at pivot points for increased ease of operation and durability
- 2000 lbs. tensile strength motor safety cable included
- Wiring harness and operating control switch included



**UP POSITION**



**MIDDLE POSITION**



**DOWN POSITION**

Model	H.P. Rating	Motor Weight Not to Exceed	Vertical Travel*	Mtg. Pad	Mounting Board Dimensions W x H x T	Mounting Bracket Dimension W x H
71095	Up to 25	148 lbs.	13 1/4" (33cm)	Poly/alum	15 3/4" x 14" x 2" (40 x 35 x 4cm)	12 1/4" x 9.5" (31 x 24cm)
71096	25 to 40	248 lbs.	13 1/4" (33cm)	Poly/alum	15 3/4" x 14" x 2" (40 x 35 x 4cm)	16 1/4" x 9.5" (41 x 24cm)

\*Vertical travel is based on transom angle being perpendicular to the water.

## UNMATCHED FEATURES AND QUALITY!

*Garelick's line of Hydraulic Outboard Motor Brackets is engineered and designed with over 35 years of experience in the field. This series offers the most advanced and innovative features available and has been rigorously tested by a leading motor manufacturer.*

HIGH  
TENSILE  
ALUMINUM

ANODIZED  
ALUMINUM  
FINISH

CENTER

YACHT

# MANUAL OPERATED "EASY PUMP" HYDRAULIC LIFT OUTBOARD MOTOR BRACKET



71092



SIMPLE RIGHT/LEFT PUMP ACTION

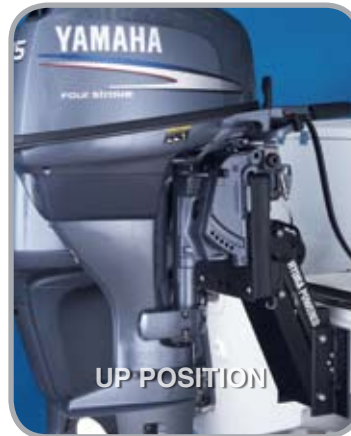


RELIEF VALVE PROVIDES TRIM HEIGHT ADJUSTMENT



## PLAIN AND SIMPLE. THE BEST MANUAL OUTBOARD MOTOR BRACKET AVAILABLE

- Raise and lower trolling and auxiliary motors on power boats and sailboats with ease
- New generation motor bracket lifts up 4 stroke motors with short side to side movement of a lever handle (removable for stowage). This simple movement activates a maritized manual hydraulic lift pump inside the body of the bracket
- Release valve lowers the bracket down into operating position
- 14" of continuous vertical height adjustment provides optimum trim adjustment for any water surface or boat load condition
- Eliminates the inconveniences of conventional spring loaded models; no electrical wiring required
- High Tensile Alloy - Black satin Anodized aluminum body to resist corrosion
- Aircraft stainless steel hardware and engineered bronze bushings at pivot points for increased ease of operation and durability
- Heavy-Duty Stainless Steel Hardware for increased durability
- 2" Thick Poly Mounting Board
- Wide Track Design for added stability and strength
- This innovative design offers the easiest to operate manual motor bracket ever built by **GARELICK EEZ-In**
- 2000 lbs. tensile strength motor safety cable included



UP POSITION



DOWN POSITION



MARITIZED STAINLESS STEEL ACTUATOR

Model	H.P. Rating	Motor Weight Not to Exceed	Vertical Travel*
71092	7 1/2 to 25	175 lbs.	14" (36cm)

Mtg. Pad
Poly

Mounting Board Dimensions W x H x T
15 3/4" x 14" x 2" (40 x 35 x 4cm)

Mounting Bracket Dimension W x H
11" x 9 3/4" (28 x 25cm)

\*Vertical travel is based on transom angle being perpendicular to the water.

ANODIZED ALUMINUM FINISH



SAILBOAT



CENTER



FISHING

**GARELICK**  
EEZ-In

# ALUMINUM AUXILIARY MOTOR BRACKET FOR 4-STROKE MOTORS



71091



71091 : BACK

## 4-STROKE MOTOR BRACKET

- Raise and lower trolling and auxiliary motors on power and sailboats with ease
- Built especially for new 4 Stroke, heavier, high torque motors
- Extra Wide 11 1/2" (29cm) Black Poly Mounting Board for new, wider style motor locking clamps used on late model outboard motors
- Accommodates long or short shaft motors
- Motor Safety Cable included for added protection

## EASIER TO OPERATE AND LIFT

- With 5 vertical running position lock bar to compensate for water surface and boat load conditions – Hard coated for added resistance to wear
- New, ergonomically designed twist lock safety knobs secure bracket in place
- Heavy-duty stainless steel torsion springs help counterbalance motor's weight
- Easier to hold with comfortable, soft Hypalon grip handle designed to accept most style outboard motor locks

## TOP QUALITY

- Black satin Anodized aluminum body resists corrosion
- 2" Thick, Extra Wide Black Poly Mounting Board – Weatherable and maintenance free
- Aircraft Type Stainless Steel Hardware – For increased durability with nylon friction resistant washers

## HEAVY DUTY MOTOR SAFETY CABLE INCLUDED!



71090



71090 : BACK



71030

Model	H.P. Rating	Motor Weight Not to Exceed	Vertical Travel*	Mtg. Pad	Mounting Board Dimensions W x H x T	Mtg. Bracket Dimension W x H
71091:	Over 7 1/2 to 25	175 lbs.	15 1/2" (39cm)	Poly	11 1/2" x 12" x 2" (29 x 30 x 5cm)	10" x 9 3/4" (25 x 25cm)
71090:	Over 7 1/2 to 30	169 lbs.	9 1/2" (24cm)	Poly	11 1/2" x 10 3/4" x 2" (29 x 27 x 5cm)	8" x 9" (20 x 23cm)

\*Vertical travel is based on transom angle being perpendicular to the water.

ANODIZED  
ALUMINUM  
FINISH



CENTER



SAILBOAT

# ALUMINUM AUXILIARY MOTOR BRACKET FOR 2-STROKE MOTORS



71057

- Retractable Bracket for Trolling Auxiliary Motors on power and sailboats with ease
- Transom mount locks and holds motor up or swings down for propulsion
- Tough alloy Anodized Aluminum frame, Stainless Steel springs
- Fits all style motors – Extra Wide 11 1/2" (29cm) Black Poly Mounting Board
- 4-position locking height adjustment

## MOUNTING PAD

- 2" thick x 11.5" wide (5 x 29cm). Designed to accommodate the width dimensions of newer, wider style motor locking clamps

Model	H.P. Rating	Motor Weight Not to Exceed	Vertical Travel*	Mtg. Pad	Mounting Board Dimensions W x H x T	Mounting Brkt Dimensions W x H
71040**:	To 8	59 lbs.	8 1/2" (22cm)	Poly	11 1/2" x 10 3/4" x 2" (29 x 27 x 5cm)	5 1/4" x 9" (13 x 23cm)
71057:	Over 7 1/2 to 20	115 lbs.	11 1/4" (29cm)	Poly	11 1/2" x 10 3/4" x 2" (29 x 27 x 5cm)	5 1/4" x 9" (13 x 23cm)
71042:	Over 7 1/2 to 12	82 lbs.	14 1/4" (36cm)	Poly	11 1/2" x 10 3/4" x 2" (29 x 27 x 5cm)	5 1/4" x 9" (13 x 23cm)

\*Vertical travel is based on transom angle being perpendicular to the water.  
 \*\*Works for motors with single attaching clamp.

ANODIZED  
ALUMINUM  
FINISH



# STAINLESS STEEL AUXILIARY OUTBOARD MOTOR BRACKETS FOR 2-STROKE MOTORS



71033



71056

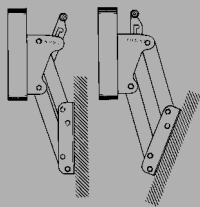
- Easier to lift and lower – Stainless springs help balance motor weight
- Transom mount locks and holds motor up or swings down for propulsion
- Built in transom angle adjustment allows optimum motor performance
- Fits all style motors – Extra Wide (11 1/2" 29cm) Black Poly Mounting Board for newer, wider style motor locking clamps
- 4 position locking height adjustment
- Stainless Mounting Hardware & instructions included
- Wide track body for added stability
- Made of tough 304 Stainless Steel

## MOUNTING PAD

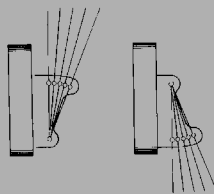
- 2" thick x 11 1/2" wide (5 x 29cm). Designed to also accommodate the width dimensions of late model auxiliary outboard motors.

Model	H.P. Rating	Motor Weight Not to Exceed	Vertical Travel*	Mtg. Pad	Mtg. Board Dimensions W x H x T	Mtg. Bracket Dimension W x H
71033**	Over 7 1/2 to 25	118 lbs.	11 1/4" (29cm)	Poly	11 1/2" x 10 3/4" x 2" (29 x 27 x 5cm)	7 5/8" x 7 7/8" (19 x 20cm)
71056	Over 7 1/2 to 20	115 lbs.	11 1/4" (29cm)	Poly	11 1/2" x 10 3/4" x 2" (29 x 27 x 5cm)	7 5/8" x 7 7/8" (19 x 20cm)
71039	Over 7 1/2 to 12	82 lbs.	14 1/4" (36cm)	Poly	11 1/2" x 10 3/4" x 2" (29 x 27 x 5cm)	7 5/8" x 7 7/8" (19 x 20cm)

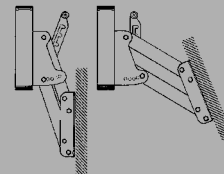
\*Vertical travel is based on transom angle being perpendicular to the water.  
 \*\*Heavy duty with reinforced welded frame and stamped stainless components.



**1. POSITIVE TRIM ANGLE ADJUSTMENT** Ideal for sailboats with reverse angle transoms! Extends the propeller further abaft the transom.



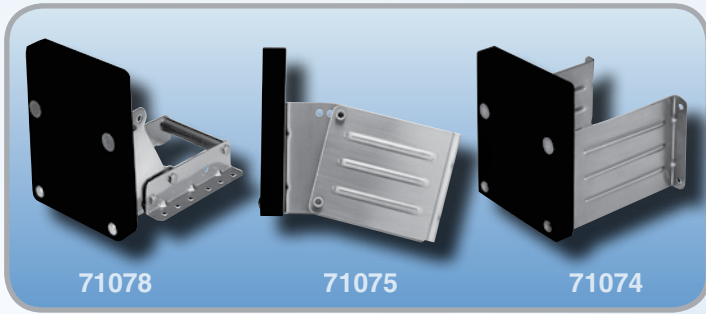
**2. ADJUSTS TO TRANSOMS W/ ANGLES FROM ZERO TO +/- 28° IN 7° INCREMENTS**  
 : Positive or negative trim adjustment feature enables motor driveshaft to be trimmed relative to the plane of the boat transom.



**3. "NEGATIVE" TRIM ANGLE ADJUSTMENT :** Brings the propeller closer to the transom. (The same angle adjustment bracket can be inverted for positive or negative use)

ANODIZED  
ALUMINUM  
FINISH





### STATIONARY OUTBOARD MOTOR BRACKETS

- Fixed height for auxiliary or trolling motor – 2 stroke
- 304 Stainless brackets and Hardware
- 1 1/2" (4cm) Black Poly Mounting Board – 8" (20cm) width
- For motors up to 15 H.P.
- Motor weight up to 75 lbs.

#### SPECIFICATIONS :

- 71074** : Vertical Transom Mount  
**71075** : Vertical Transom Mount - Adjustable plus or minus 7 degree to 35 degree transoms  
**71078** : Horizontal Platform Mount



### OUTBOARD MOTOR FILTER

- Leverage tool for use with manual lift motors
- Tilts motors back easier with less strain
- Adjustable to fit shroud of outboards with hand holds
- Compact for stowage
- All contact points are cushioned

#### SPECIFICATIONS :

- 71036** : 304 stainless steel and anodized aluminum tube with aluminum castings, riveted assembly. Handles motor to 40 h.p.



### REPLACEMENT MTG PAD

- Fits all models except 71044, 71090, 71091, 71092, 71095, and 71096
- Black poly construction

#### SPECIFICATIONS :

- 99049** : 11.5" W x 12" H x 2" thick (29 x 30 x 5cm) - for use with Models 71091 and 71092  
**99057** : 11.5" W x 10.75" H x 2" thick (29 x 27 x 5cm) for use with 71033, 71039, 71056, 71040, 71042, 71057, 71090



### HEAVY DUTY MOTOR SAFETY CABLE

- Secures motor to motor bracket or boat
- Black poly vinyl cover

#### SPECIFICATIONS :

- 71030** : 2000 lbs tensile strength, stainless steel carabiner style snap hook, 48" (122cm) length.

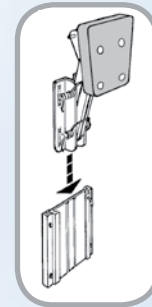


### ADAPTER PLATE FOR AL. MOTOR BRACKETS

- Enables quick removal of brackets from transom
- Anodized aluminum plate mounts to transom
- Bracket slides in and locks
- Can also be used for storage
- Fits : 71040, 71042 and 71057

#### SPECIFICATIONS :

- 71053** : 7 3/16" W x 9 11/16" H (18 x 25cm)



### BOAT DOLLY

- Helps move and roll small fishing boats with ease
- Moves boats from cars to water, at lake, campsite or resorts
- Clamps securely to the transom

#### SPECIFICATIONS :

- 71050** : 1" (3cm) diameter zinc plated steel, 4 - 7" x 1.5" (18 x 4cm) rubber tired wheels. Maximum weight 250 lbs.. Transom bracket is 7.25" wide x 4.25" (18 x 11cm) high. Opens up to 4" (10cm)



## OUTBOARD MOTOR CARRIERS

- For ease when storing or moving motors
- Models for outboard and trolling motors up to 315 lbs.
- Strong aluminum tube frame – Tough alloy drawn aluminum up to 25% stronger than extruded tube
- High tensile alloy reinforced aluminum tube, 1/2" steel plated axle. Recycled plastic mounting board



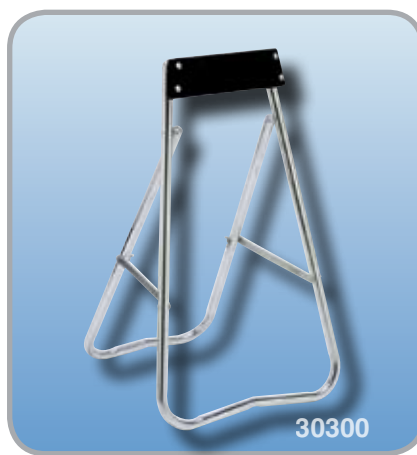
31600



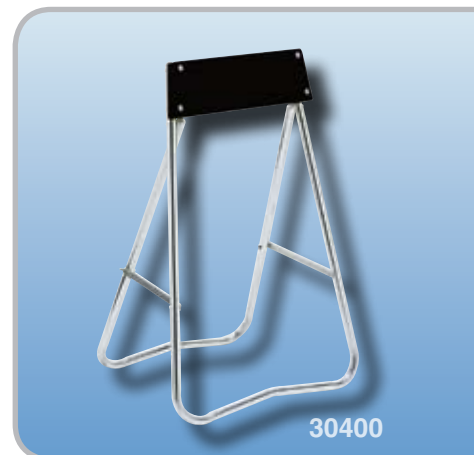
30400



31600



30300



30400



31400



31800



31900

Model	Weight Capacity	Height	Wheels**	6 Gal. Gas Can Holder
30300	85 lbs.	32.5" (83cm)	NA	No
30400	180 lbs.	36" (83cm)	NA	No
31400*	85 lbs.	35" (83cm)	2 - 7" x 1.5" (18 x 4cm)	No
31600*	130 lbs.	36.75" (83cm)	2 - 8" x 1.5" (20 x 4cm)	Yes
31800	265 lbs.	37" (83cm)	4 - 10" x 1.75" (25 x 4cm)	Yes
31900	315 lbs.	41" (83cm)	4 - 10" x 1.75" (25 x 4cm)	No

\* Accepts long shaft motors

\*\* Semi-pneumatic rubber tired wheels

HIGH  
TENSILE  
ALUMINUM

## IN STORE MERCHANDISING TOOLS



99238



### WE OFFER MORE EFFECTIVE MERCHANDISING

Top quality, innovative product with unique features now offers the simplest system to sell hardware in the marine after-market.



### P.O.P. SEAT HARDWARE PACKAGING AND IN-STORE DEMONSTRATION DISPLAY

We ship all after-market Seat Hardware in four-color display packaging. A complete sales guide on the features of this hardware helps the consumer understand the concept.



MODEL	PG	MODEL	PG	MODEL	PG	MODEL	PG	MODEL	PG	MODEL	PG	MODEL	PG	MODEL	PG
05031	15	19803	8	48050	27	55167	52	75028	37	75349	48	75636	37	94300	53
05037	15	19804	8	48055	27	55168	52	75030	37	75350	48	75637	37	94301	53
05041	15	19812	8	48056	27	55170	52	75031	37	75351	48	75640	47	94302	53
05047	15	19833	8	48061	24	55175	52	75032	37	75355	48/49	75641	47	94303	53
06031	15	19834	8	48099	25	55190	52	75033	37	75356	48/49	75642	47	94304	53
06041	15	19853	7	48103	24	65000	53	75034	37	75357	48	75643	47	94305	53
06131	15	19854	7	48104	25	65010	53	75035	37	75358	48	75644	47	94320	53
06141	15	19873	7	48106-61	51	71030	60	75047	24/44	75359	49	75645	47	99000	19
10049	17	19874	7	48251	24	71033	59	75048	45	75371-70	33	75646	47	99001	19
12150	17	19902-30	10	48281	24	71036	60	75051	45	75373	48	75647	47	99023	35/39/41
12340	16	19902-34	10	48391	28	71039	59	75054	35	75374	48	75648	47/49	99026	39
12350	16	19902-44	10	48400	26	71040	59	75055	29/44	75375	49	75650	47	99027	39
12360	16	20000	38	48401	26	71042	59	75056	44	75392	46	76000	17/19	99028	35/39/41
12370	16	20001	38	48402	26	71050	60	75057	44	75394	46	76006	19	99036	35/41
13002	17	21000	38	48406	27	71053	60	75058	44	75400	49	76007	19	99046	52
13003	17	21000-70	32	48409	27	71056	59	75080	42	75401	49	76010	51	99049	60
15230	17	21001	38	48420	26	71057	59	75081	42	75402	49	76011	51	99057	60
15240	17	21021	44	48425	26	71066	53	75082	34/38/40	75404	41	76012	51	99068	23
15330	18	21022	44	48450	23	71069	53	75083	34/38/40	75405	49	77000	43	99069	22
15340	18	21025	44	48470	23	71074	60	75090	42	75415	41	77300	43	99070	26
15350	18	21026	44	48480	23	71075	60	75091	42	75425	46	78102	31	99101	26
15730	18	22000	34/40	48485	22	71077	53	75096	42	75428	37	78111	31	99127	35/41
15740	18	22001	34/40	48490	22	71078	60	75148	45	75430	41	78115	31	99129	45
15750	18	23000-21	40	48536	25	71080	53	75152	45	75431	41	78124	31	99136	25
18017	14	23000-70	33	48548	25	71090	58	75154	45	75432	41	78203-30	42	99180	9
18018	14	25022	19	48691	28	71091	58	75156	22/44	75433	41	78215	31	99181	9
19250	16	25028	19	48791	28	71092	57	75225	46	75434	41	78218	31	99182	9
19512	14	25122	19	48810	21	71095	56	75228	37	75435	37	78225	31	99183	9
19513	14	25128	19	48815	21	71096	56	75230	37	75436	41	78229	31	99184	9
19530	13	26015	19	48820	21	74001	42	75231	37	75437	41	78315	31	99187	9
19535	13	26018	19	48891	29	74002	42	75232	37	75438	41	78318	31	99188	9
19536	13	27315	19	48930	22	75002-70	33	75233	37	75442	49	78325	31	99191	43
19540	13	27316	19	48935	22	75002-75	33	75234	37	75445	49	78329	31	99193	8/48
19545	13	27415	19	48940	23	74003	42	75235	37	75446	49	78350	45	99194	7
19546	13	27515	19	48945	23	75004	45	75320	47	75451	46	78351	44	99195	7
19612	14	27516	19	48970	23	75007	45	75321	47	75460	46	78411	31	99196	8
19615-61	11	30300	61	48975	23	75010	45	75325	46	75470	47	78415	31	99200	27
19616-61	11	30400	61	49000	25	75011	45	75335	37	75515	39	78424	31	99201	26
19617-61	11	31400	61	49003	25	75013	45	75337	49	75528	39	78500	46	99204	18
19619-29	11	31600	61	50400	50	75014	29/44	75340	48	75530	39	78501	46	99235-21	41
19620-25	11	31800	61	50405	50	75015	53	75341	48	75531	39	78515	35	99237-21	41
19620-34	11	31900	61	50410	50	75016	45	75343	48	75532	39	78524	35	99238	62
19622-61	12	35029-62	51	55004	52	75017	45	75344	48	75533	39	78528	35	99300	35/38/40
19623-61	12	40116	29	55006	52	75018	45	75345	48	75534	39	78530	35	99301	35/38/40
19623-82	12	40124	29	55008	52	75019	45	75346	48	75535	39	78535	35	99302	35/38/40
19700	11	43130	24	55160	52	75020	45	75347	48	75628	39	78545-14	34		
19802	8	48003	24	55161	52	75025	46	75348	48	75635	39	79715	34		

