



**GARELICK®**

MARINE  
PRODUCTS  
COLLECTION

2 0 2 3

# NAVICO GROUP

## Your most trusted partner

Navico Group is the world's leading supplier of integrated systems and products to industries ranging from marine to recreational vehicles. We bring together the best brands, products and people to create groundbreaking innovations that reinvent the consumer experience. Our broad portfolio of the industry's leading brands in power management, digital control & monitoring, networked devices, and marine electronics are distributed globally to a diverse aftermarket and OEM customer base. Navico Group is driven, every day, to be the world's most trusted partner to the marine and mobile industries, and beyond.



Lighting  
Marine Accessories  
Water and Fuel Systems  
[attwoodmarine.com](http://attwoodmarine.com)



Wire  
Wire Management  
[ancorproducts.com](http://ancorproducts.com)



Battery Management  
Circuit Protection  
Power Distribution  
[blueseasystems.com](http://blueseasystems.com)



Chartplotters  
Radar  
Autopilots  
Sonar Technology  
[simrad-yachting.com](http://simrad-yachting.com)



Digital Control & Monitoring  
Onboard Offboard UX  
[czone.net](http://czone.net)



Battery Management  
Power Distribution  
[bepmarine.com](http://bepmarine.com)



Battery Chargers  
[promariner.com](http://promariner.com)



Lithium Batteries  
Portable Power  
AGM Batteries  
[relionbattery.com](http://relionbattery.com)



Chartplotters  
Displays  
Instruments  
Sensors  
[bandg.com](http://bandg.com)



Trolling Motors  
[motorguide.com](http://motorguide.com)



Heating Systems  
Pumps  
[whalepumps.com](http://whalepumps.com)



Marine Cartography  
[c-map.com](http://c-map.com)



AC Shore Power  
Marine Accessories  
[marinco.com](http://marinco.com)



Actuators  
Trim Tab System  
[lencmarine.com](http://lencmarine.com)



Metal Fabricated  
Hardware  
[garelick.com](http://garelick.com)



Chartplotters  
Fishfinders  
Sonar & Radar  
Trolling Motors  
[lowrance.com](http://lowrance.com)



Batteries  
Power Conversion  
[mastervolt.us](http://mastervolt.us)





# What makes Garelick different:

## | Founder's Vision

Garelick prides itself on six decades of experience in metal fabrication. Our reputation is built on producing the highest quality and most innovative products in the recreational marine industry. Our premium pedestal and marine hardware solutions are designed for the most recognizable boat brands in the world.

## | Innovation & Engineering

Manufacturing and design processes that focus on creating refined marine products that can withstand the harshest marine conditions.

## | Product Focus

Garelick offers a strong portfolio of premium pedestal and marine hardware solutions that can be adapted for a wide variety of boat types and customer needs.

## | Global Reach

A global distribution network provides convenient access to products when they are needed.

## | Industry Standards

Industry involvement ensures products meet industry safety & regulatory standards.

## | Trusted Quality

Highest quality products and systems you can trust.





# NEW Products



10

## Latitude Series, Electric Rise Pedestal System

Mechanized adjust-ability and automotive-style attention to detail that make boat handling and navigation a breeze.



11

## Latitude Series, Fixed Height Pedestal System

Minimal intrusion to a boat's frame and provides clearance that is ideal for multi-hull applications.



11

## Latitude Series, Low Profile Seat Slide Swivel

Industrial design ease-of-use provides the smoothest travel in the industry.



# Table Of Contents

## Seat Hardware

Seat Hardware Overview	8
Seat Hardware Systems	9
Pedestals and Systems	10
Slides	16
Swivels	16



## Table Hardware

Table Hardware Overview	24
Side Mount Coaming	
Table Leg System	25
Pedestals	26



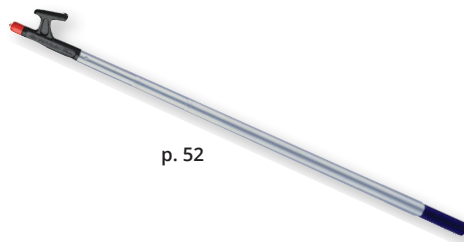
## Boarding Ladders

Boarding Ladders Overview	34
Boarding Ladders	35
Footrests	48



## Dock Accessories

Boat Hooks	52
------------	----



## Index

Part Number Index	54
-------------------	----



# SEAT HARDWARE





# SEAT HARDWARE

## Pedestals & Systems



10

Proven to perform better and last over time.

## Slides



16

Various options to fit any application.

## Swivels



17

Clean and uncomplicated operation.



## Seat Hardware Overview

Garelick's premium quality and craftsmanship provides boat builders with a wide variety of seating hardware that will match the stylish design expected by boaters. Our seating hardware is suited for all boat types – from Jon Boats to Mega Yachts, and is rock solid and wobble-free. Garelick is sure to have the right seat system for your boat.

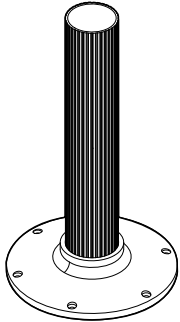




## How it Works: Seat Hardware Systems

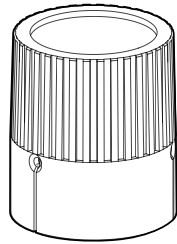
### Four Primary Components

The Garelick Seat Hardware System is comprised of four basic components: Pedestal, Delrin Bearing Cup, Seat Swivel (Spider) and Seat Slide. Though not all Seat Hardware solutions utilize all four of these components, all of the products can be combined to match your specific needs.



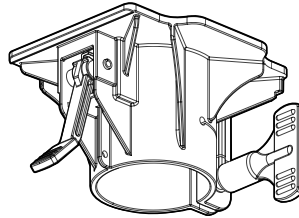
#### Pedestal

The foundation of the seating system, the pedestal attaches to the deck and supports all related componentry. Available in fixed or adjustable heights and two finishes.



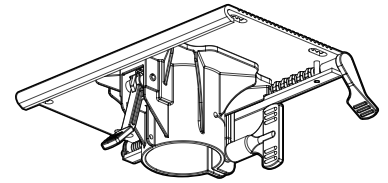
#### Delrin Cup

Available in several different formats to accommodate all types of Garelick 2.875" pedestals, bearing cups act as a non-rotating, greaseless indexable locking mechanism.



#### Seat Swivel (Spider)

Three different spider styles provide varying levels of rotational adjustability and integration with both the delrin bearing cups or bearing rings and optional seat slides.



#### Seat Slide

Two high performance Seat Slides are available for use with Millennium Seat Hardware systems. These components offer smooth, reliable fore and aft seat adjustment.



# Latitude Series NEW

The new Garelick Latitude Series delivers the premium quality and craftsmanship that consumers expect from Garelick, in a versatile package that is consistent in styling and easy to assemble. Latitude Series is built to install in a breeze, adjust at-will, and perform to the highest level. These benefits and many more help boat builders deliver the best seating experience for all water conditions.

- Modular Platform: Latitude is the only true modular seat platform with mechanized adjustability.
- Delightful Experience: Latitude offers the best seating experience in all water conditions.
- Durable: Latitude is more durable than the leading competition.
- Easy to Use: Latitude is the easiest seat pedestal system to use.



## Latitude 5.25" Electric Rise Pedestal System

Part #	Installation	Adjustable Height	Stanchion Tube Dia.	Base Dia.	Swivel	Slide
78303-60	Thru-Deck	3.75" - 7.75"	5" (12.7cm)	5.25" (13cm)	✓	✓
78312-60	Above Deck	12.5" - 16.5"	5" (12.7cm)	5.25" (13cm)	✓	✓
78315-60	Above Deck	15" - 19"	5" (12.7cm)	5.25" (13cm)	✓	✓
78319-60	Above Deck	19" - 23"	5" (12.7cm)	5.25" (13cm)	✓	✓
99998-31	Replacement End Cap					



### Latitude 5.25" Fixed Height Pedestal System

Part #	Installation	Fixed Height	Stanchion Tube Dia.	Base Dia.	Swivel	Slide
78307-10	Above Deck	7" (18cm)	5" (12.7cm)	5.25" (13cm)	—	✓
78308-10	Above Deck	8"(20cm)	5" (12.7cm)	5.25" (13cm)	—	✓
78309-10	Above Deck	9" (23cm)	5" (12.7cm)	5.25" (13cm)	—	✓
78310-10	Above Deck	10" (25cm)	5" (12.7cm)	5.25" (13cm)	—	✓
78311-10	Above Deck	11" (28cm)	5" (12.7cm)	5.25" (13cm)	—	✓
78312-10	Above Deck	12" (30cm)	5" (12.7cm)	5.25" (13cm)	—	✓
78313-10	Above Deck	13" (33cm)	5" (12.7cm)	5.25" (13cm)	—	✓
78307-20	Above Deck	7" (18cm)	5" (12.7cm)	5.25" (13cm)	✓	✓
78308-20	Above Deck	8"(20cm)	5" (12.7cm)	5.25" (13cm)	✓	✓
78309-20	Above Deck	9" (23cm)	5" (12.7cm)	5.25" (13cm)	✓	✓
78310-20	Above Deck	10" (25cm)	5" (12.7cm)	5.25" (13cm)	✓	✓
78311-20	Above Deck	11" (28cm)	5" (12.7cm)	5.25" (13cm)	✓	✓
78312-20	Above Deck	12" (30cm)	5" (12.7cm)	5.25" (13cm)	✓	✓
78313-20	Above Deck	13" (33cm)	5" (12.7cm)	5.25" (13cm)	✓	✓
99998-31	Replacement End Cap					



78307-10



78307-20

### Latitude Low Profile Seat Slide Swivel

Part #	Installation	Fixed Height	Dimensions	Fore and Aft Travel	Swivel	Slide
75362-20	Deck Mount	3" (8cm)	8.84" W x 16.09" L	7" (18cm)	—	✓
75363-20	Deck Mount	3" (8cm)	8.84" W x 16.09" L	7" (18cm)	✓	✓
99998-31	Replacement End Cap					



75362-20



75363-20



## 2.875" Gas Rise Millennium Pedestal System

- A complete system featuring lift, slide and swivel
- Touch actuated lever, gas rise with 85 lbs. of lift force
- Millennium Slide & Swivel (21000-80)
- 360° rotation allows user to lock every 10°

Part #	Adjustable Height	Stanchion Tube Dia.	Base Diameter	Swivel	Slide
75636-G	Low 12"- 15" (30-38cm)	2.875" (7cm)	9.25" (23cm)	✓	✓
75637	Medium 14"- 18" (36-46cm)	2.875" (7cm)	9.25" (23cm)	✓	✓
21000-80	Gas rise seat slide and swivel				



75637

## 2.875" Adjustable Height Friction Lock Pedestal

- Seat raises or lowers, locks at desired height
- Anodized protective finish helps prevent saltwater corrosion and weathering
- Accepts Seat Slides: 22000, 22001, 75080, 75081, 75082, 75083, 75091
- Accepts Swivels: 99023, 99036
- 75080, 75081, 75091 must be used in conjunction with 99023 or 99036

Part #	Adjustable Height	Stanchion Tube Diameter	Base Diameter	Smooth	Ribbed
75436-G	Low 12"- 17" (30-43cm)	2.875" (7cm)	9" (23cm)	✓	—
75437-G	Medium 18"- 23" (46-58cm)	2.875" (7cm)	9" (23cm)	✓	—
99137-40	Replacement knob and rod 2.25" (6cm) long				



75436-G

## 2.875" Fixed Height Pedestal

- Provides solid base of support for a variety of seat hardware
- Accepts Garelick fore and aft seat slides and 360° swivel spider combinations
- Accepts Seat Slides: 22000, 75080, 75081, 75082, 75083, 22001, 75091
- Accepts Swivels: 99023, 99036
- 75080, 75081, 75091 must be used in conjunction with 99023 or 99036

Part #	Overall Height	Stanchion Tube Diameter	Base Diameter	Smooth	Ribbed
75431	9" (23cm)	2.875" (7cm)	9.25" (23cm)	✓	—
75430	12" (30cm)	2.875" (7cm)	9.25" (23cm)	✓	—
75415	15" (38cm)	2.875" (7cm)	9.25" (23cm)	✓	—
75432	18" (46cm)	2.875" (7cm)	9.25" (23cm)	✓	—
75433	24" (61cm)	2.875" (7cm)	9.25" (23cm)	✓	—
75434	30" (76cm)	2.875" (7cm)	9.25" (23cm)	✓	—



75430

## 2.875" Fixed Height Pedestal

- Provides solid base of support for a variety of seat hardware
- Accepts Garelick fore and aft seat slides and 360° swivel spider combinations
- Accepts Seat Slides: 21000, 75080, 75081, 75082, 75083, 20000, 20001, 21001
- Accepts Swivels: 99023, 99026
- 75080, 75081, 75091 must be used in conjunction with 99023 or 99026

Part #	Overall Height	Stanchion Tube Diameter	Base Diameter	Smooth	Ribbed
75531	9" (23cm)	2.875" (7cm)	9.25" (23cm)	—	✓
75530	12" (30cm)	2.875" (7cm)	9.25" (23cm)	—	✓
75515	15" (38cm)	2.875" (7cm)	9.25" (23cm)	—	✓
75532	18" (46cm)	2.875" (7cm)	9.25" (23cm)	—	✓
75533	24" (61cm)	2.875" (7cm)	9.25" (23cm)	—	✓
75534	30" (76cm)	2.875" (7cm)	9.25" (23cm)	—	✓



75530

## 2.875" Adjustable Height Positive Pin Lock Pedestal

- Pin secures base at specific height in 1" increments
- Stainless steel lock pin locates securing hole easily
- Satin anodized protective finish helps prevent saltwater corrosion and weathering
- Accepts Seat Slides: 20000, 20001, 21001, 75080, 75081, 75082, 75083, 75091, 21001
- Accepts Swivels: 99023, 99026
- 75080, 75081, 75091 must be used in conjunction with 99023 or 99026

Part #	Adjustable Height	Stanchion Tube Diameter	Base Diameter	Smooth	Ribbed
75635	12"- 17" (30-43cm)	2.875" (7cm)	9.25" (23cm)	—	✓
75628-G	18"- 23" (46-58cm)	2.875" (7cm)	9.25" (23cm)	—	✓
99137-41	Replacement knob and rod 3.75" (10cm) long				



75635

## 2.875" Adjustable Height Standard Friction Lock Pedestal

- Seat raises or lowers, locks at desired height
- Anodized protective finish helps prevent saltwater corrosion and weathering
- Accepts Seat Slides: 20000, 20001, 21001, 75080, 75081, 75082, 75083, 75091, 21001
- Accepts Swivels: 99023, 99026
- 75080, 75081, 75091 must be used in conjunction with 99023 or 99026

Part #	Adjustable Height	Stanchion Tube Diameter	Base Diameter	Smooth	Ribbed
75535	12"- 17" (30-43cm)	2.875" (7cm)	9" (23cm)	—	✓
75528	18"- 23" (46-58cm)	2.875" (7cm)	9" (23cm)	—	✓
99137-40	Replacement knob and rod 2.25" (6cm) long				



75535

### 2.875" Low Profile Pedestal

- One-piece casting for mounting seats as low as possible (4.75" Overall Height)
- Accepts Seat Slides: 22000, 75082, 75083, 22001, 75080, 75081, 75091
- Accepts Swivels: 99023, 99036

Part #	Overall Height	Stanchion Tube Diameter	Base Diameter	Swivel	Slide	Smooth	Ribbed
75404	4.75" (12cm)	2.875" (7cm)	9.25" (23cm)	✓	✓	—	—



75404

### 2.875" Adjustable Height Pedestal System

- Seat raises or lowers, locks at desired height
- 4 Prong spider swivels 360° and locks
- Available anodized finish which helps prevent saltwater corrosion and weathering

Part #	Adjustable Height	Stanchion Tube Diameter	Base Diameter	Swivel	Slide	Smooth Polished	Smooth Anodized
75035	Low 12" - 17" (30-43cm)	2.875" (7cm)	9.25" (23cm)	✓	—	✓	—
75028	Medium 18" - 24" (46-61cm)	2.875" (7cm)	9.25" (23cm)	✓	—	✓	—
75235-G	Low 12" - 17" (30-43cm)	2.875" (7cm)	9.25" (23cm)	✓	—	—	✓
75228	Medium 18" - 24" (46-61cm)	2.875" (7cm)	9.25" (23cm)	✓	—	—	✓
99137-40	Replacement knob and rod 2.25" (6cm) long						



75035

### 2.875" Fixed Height Pedestal System

- Mounts seat securely
- 4 Prong spider swivels 360° and locks positively

Part #	Overall Height	Stanchion Tube Diameter	Base Diameter	Swivel	Slide	Smooth Polished	Smooth Anodized
75031	9" (23cm)	2.875" (7cm)	9.25" (23cm)	✓	—	✓	✓
75030	12" (30cm)	2.875" (7cm)	9.25" (23cm)	✓	—	✓	✓
75032	18" (46cm)	2.875" (7cm)	9.25" (23cm)	✓	—	✓	✓
75033	24" (61cm)	2.875" (7cm)	9.25" (23cm)	✓	—	✓	✓
75034	30" (76cm)	2.875" (7cm)	9.25" (23cm)	✓	—	✓	✓
99137-40	Replacement knob and rod 2.25" (6cm) long						



75030



### 3.5" Fixed Height Pedestal

- Meets ABYC, H-31 Type A Standards
- Polished and anodized aluminum components
- Designed to protect against saltwater corrosion and weathering
- Accepts Seat Slides: 22000, 22001, 75080, 75081, 75082, 75083, 75091
- Accepts Swivels: 99023, 99036
- 75080, 75081, 75091 must be used in conjunction with 99023 or 99036

Part #	Fixed Height	Stanchion Tube Diameter	Base Diameter	Swivel	Slide	Smooth Polished	Smooth Anodized
78515	15" (38cm)	3.5" (9cm)	10.5" (27cm)	✓	✓	✓	✓
78524	24" (61cm)	3.5" (9cm)	10.5" (27cm)	✓	✓	✓	✓
78530	30" (76cm)	3.5" (9cm)	10.5" (27cm)	✓	✓	✓	✓



78515

### 4.0" Gas Rise Commander Pedestal System

- Commander System includes 360° swivel rotation, fore and aft slide, and gas spring lift
- Robustly designed to match the scale, precision and response of the highest quality yachts available on the market today
- Gas rise lift system with 112 lbs. of lift force

Part #	Adjustable Height	Stanchion Tube Diameter	Base Diameter	Swivel	Slide	Smooth
78318	14.375" - 18.375" (37-47cm)	4" (10cm)	12" (30cm)	✓	✓	✓
78325	21.125" - 25.125" (54-64cm)	4" (10cm)	12" (30cm)	✓	✓	✓

78318  
Commander II

## Millennium Series Seat Slides

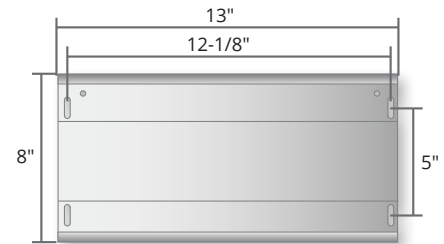
- Low profile design allows 360° of rotation and 6" of smooth, wobble-free fore and aft travel
- Positive Lock Spider – rotates 360°, internal cup engages in 10° increments for positive stop lock  
Meets ABYC-H31, Type A & Garelick performance standards
- Adds .5" (1.25cm) to Pedestal height

Part #	Description	Lever	Finish	Swivel	Slide	Smooth	Ribbed
20000	Positive Lock Slider & Spider Combo	Left Hand	Plain	✓	✓	—	✓
20001	Positive Lock Slider & Spider Combo	Right Hand	Plain	✓	✓	—	✓
21000	Positive Lock Slider & Spider Combo	Left Hand	Silver Powder Coat	✓	✓	—	✓
21001	Positive Lock Slider & Spider Combo	Right Hand	Silver Powder Coat	✓	✓	—	✓
99027	Internal Delrin Bearing Cup for 20000, 20001, 21000, 21001, 99026	—	—	—	—	—	—
22000	Positive Lock Slider & Spider Combo	Left Hand	Silver Powder Coat	✓	✓	✓	—
22001	Positive Lock Slider & Spider Combo	Right Hand	Silver Powder Coat	✓	✓	✓	—
99127	Internal Delrin Bearing Cup for 22000, 22001, 99036	—	—	—	—	—	—



20000/21000

### Standard Seat Slide Hole Pattern



## Millennium Series Seat Swivel

- Low profile design allows 360° of rotation
- 360° Rotation is regulated by dual locking devices - lift the positive lock lever to rotate. Drop the lever to lock in place in 10° increments.
- Meets ABYC-H31, Type A & Garelick performance standards

Part #	Description	Finish	Swivel	Slide	Smooth	Ribbed
99026	360° Positive Lock Swivel Spider Mount	Silver Powder Coat	✓	—	—	✓
99027	Internal Delrin Bearing Cup for 20000, 20001, 21000, 21001, 99026		✓	—	—	✓
99036	360° Positive Lock Swivel Spider Mount	Silver Powder Coat	✓	—	✓	—
99127	Internal Delrin Bearing Cup for 22000, 22001, 99036		✓	—	✓	—



99026/99036



## Standard Series Seat Slide/Swivel

- Provides smooth fore and aft travel and 360° seat rotation
- Adds comfort and stability to any swivel boat seat
- Compatible with any 2 7/8" (7cm) diameter tube
- Meets ABYC-H31, Type A & Garelick performance standards
- Anodized aluminum for protection from corrosion and weathering
- Adds 1.625" (4cm) to height. Hole Pattern: 5" x 12" (13x30cm)

Part #	Dimensions	Fore and Aft Travel	Swivel	Slide
75082	8.5" W x 8" L (22cm x 20cm)	6" (15cm)	✓	✓
75083	8.5" W x 13" L (22cm x 33cm) Required on Roto molded Seat Models (Includes 75081 & 99023)	7" (18cm)	✓	✓
99137-41	Replacement knob and rod 3.75" (10cm) long			
06.388	Replacement knob and rod 5.875" (15cm) long			



75083

## Standard Series Swivel Seat Mount Top

Part #	Adjustable Height
99023	360° Positive Lock Swivel Spider Mount Anodized Aluminum Finish
99137-40	Replacement knob and rod 2.25" (6cm) long

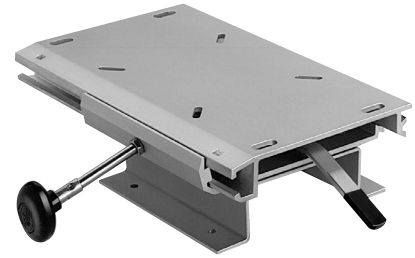


99023

## Low Profile Seat Slide & Locking Swivel

- Slide mounts to a box, platform, or bench and seat mounts to the slide plate
- Free swiveling or locks every 45°
- Anodized aluminum with stainless steel hardware. Spider swivel casting not included

Part #	Dimensions	Fore and Aft Travel	Swivel	Slide
75090	8.5" W x 13" L x 3.875" H (22cm x 33cm x 10cm)	6" (15cm)	✓	✓
06.388	Replacement knob and rod 5.875" (15cm) long			



75090

## Low Profile Seat Slides

- Slide mounts on top of swivel or platform
- Compatible with most 360° spiders
- Anodized aluminum with stainless steel hardware. Spider swivel casting not included

Part #	Size	Dimensions	Fore and Aft Travel	Swivel	Slide
75080	Standard	8.5" W x 8" L x 1.63" H (22cm x 20cm x 4cm)	6" (15cm)	—	✓
75081	Full Length Size for roto-molded seat.	8.5" W x 13" L x 1.63" H (22cm x 33cm x 4cm)	7" (18cm)	—	✓
75091	Full Length Size for roto-molded seat.	8.5" W x 13" L x 1.63" H (22cm x 33cm x 4cm)	6" (15cm)	—	✓
06.388	Replacement knob and rod 5.875" (15cm) long				



75080



75081

For use where additional travel and any seat needing reinforcement underneath. Required on all Roto molded seats.



75091

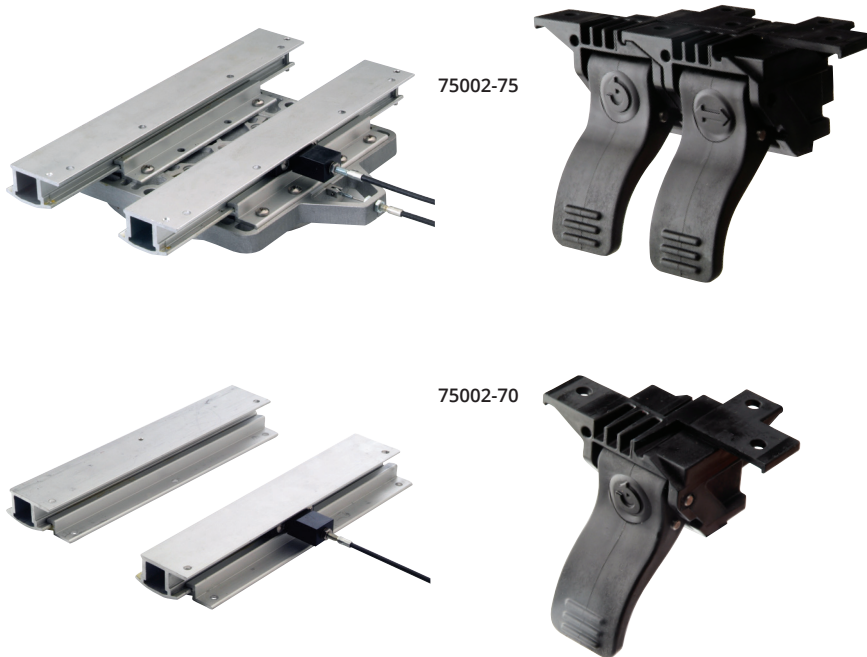
For Low Profile installations where slide mounts directly to deck. Lock handle is angled upward.



### Lever Actuated Tandem

- Precision anodized aluminum extrusions slide easily and lock at 1" (2.54cm) increments
- Heavy duty system for use with large helm seats
- Ergonomically designed levers incorporate a mechanical advantage for ease of operation
- Cables are stainless steel construction for strength and durability

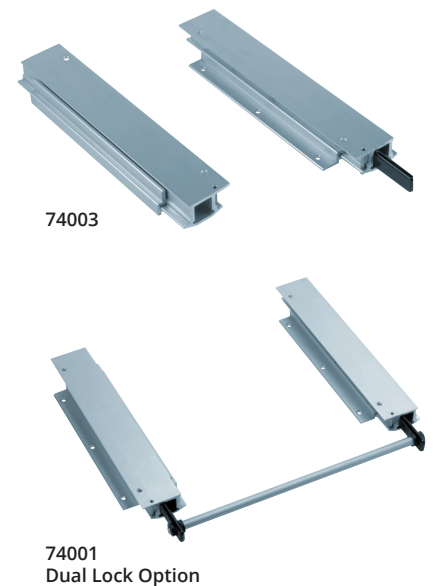
Part #	Fore and Aft Travel	Swivel	Slide
75002-75	5"	✓	✓
75002-70	7"	—	✓



### Tandem Seat Slide Track Hardware

- Provides fore & aft movement for double wide seat installations. Ideal for Double Wide Flybridge, Helm, or Pontoon Bucket Seats. Low-profile, all-anodized aluminum precision track extrusion allows seat to slide fore & aft 6" (15cm) with 1" (3cm) increments.
- Perfect for seats mounted on a support deck box or molded-in helm stations.

Part #	Dimensions	Lock Options	Fore and Aft Travel
74003-G	12.5" L x 1.5" H (32cm x 4cm)	Standard Single Lock	7" (18cm)
74001-G	16.5" L x 1.5" H (42cm x 4cm)	Dual Lock - 24" (61cm) Overall Width	6" (15cm)



## Seat Suspension System

Active seat suspension systems offer boaters new levels of comfort and safety in all weather and water conditions.

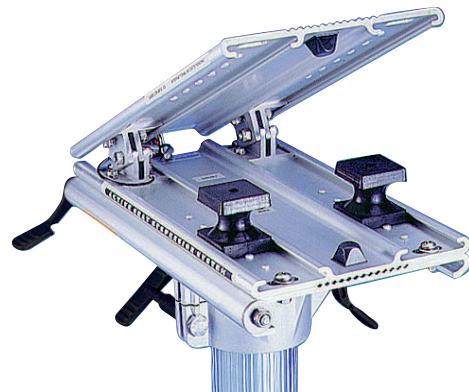
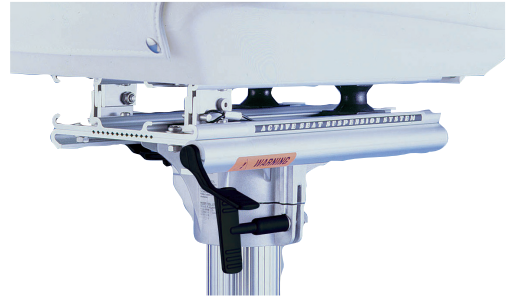
- Active Seat Suspension Systems absorb and minimize up to 75% of the shock, jolt, and vibration transmitted to the passenger from the forces of roll, pitch, and yaw.
- Active Seat Suspensions Systems reduce the feelings of seasickness and nausea by absorbing excessive movement with 1" of damped vertical travel.
- Components are saltwater spray tested and UV stable; to help endure harsh marine environments.
- Made from rugged, high-tensile, anodized aluminum with stainless steel hardware.

### Pedestal base mounting options: active seat suspension unit.

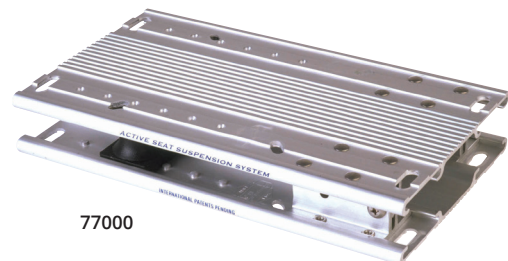
- Standard bolt hole pattern allows for mounting on top of pedestal and beneath any individual seat.
- Features heavy duty forward hinge system allowing shock absorption to occur in the vertical plane only, eliminates sway and side tipping.
- Includes provisions for mounting seats with 6" center hole pattern.
- Components are saltwater spray tested and UV stable; to help endure harsh marine environments.
- Made from rugged, high-tensile, anodized aluminum with stainless steel hardware.

### Floor and deck mounting options.

- Standard bolt hole pattern allows for easy mounting beneath seat to the deck, a box, or the floor of a boat.
- Perfect for mounting beneath seat greater than 20" (51cm).
- Includes provisions for mounting seats with 6" center hole pattern.



Part #	Description
77000	Compact size and low profile design adds only 2" (5cm) of height. The outline is 13" x 7" (33cm x 18cm) with standard 5" x 12.125" (13cm x 31cm) slotted mounting hole pattern
99191	Replacement foam seat shock – pair



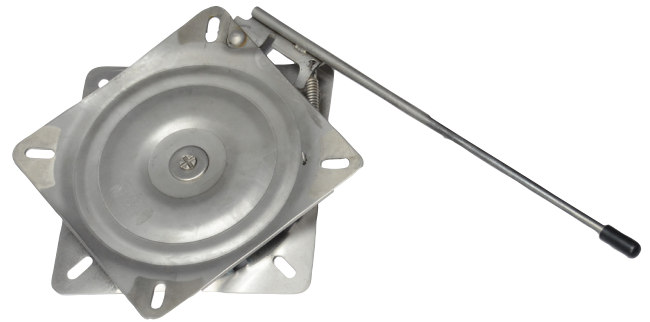
77000



## Locking Stainless Steel Seat Swivel – 360°

- Rotates 360° - 12 position lock at 30° increments
- Heavy duty for offshore market
- Fits most standard seat hole patterns
- Self-lubricating non-corrosive poly swivel bearing

Part #	Description
75120	Stainless steel, 7" x 7" (18cm x 18cm)



75120  
Dual Lock Option

## Stainless Steel Seat Swivel – 360°

- Heavy Duty for Offshore Market
- 304 Stainless Steel with stainless center rivet
- Rotates 360° - Fits most standard hole patterns
- Self lubricated non-corrosive poly swivel bearings

Part #	Description
75020	Stainless steel, 7" x 7" (18cm x 18cm)



75020





# TABLE HARDWARE





# TABLE HARDWARE

## Side Mount Coaming Table Leg System



25

Garelick Side Mount Tables allow for easy installation and removal of a table system to any vertical surface. Engineered for stability and designed to complement any boat type.

## Pedestal Hardware



26

Ideal for any boat type, Garelick pedestal hardware is designed to withstand tough marine conditions.

## Pedestals



26

All pedestals are rated and designed to surpass industry standards, ensuring the safety of boaters.



## Table Hardware Overview

Garelick's stylish table hardware is engineered for stability and designed to complement any boat type. From easy-to-use, removable table pedestals, to elegant, height-adjustable gas rise systems, our table collection meets any boaters' needs.





## Side Mount Coaming Table Leg System

Garelick's Side Mount Coaming Tables allow for easy installation and removal of a table system to any vertical surface.

- Complete sets include table leg, surface mount base, side mount bracket, and table top
- Table leg removes from side mount bracket and table top removes from table leg for stowing when not in use
- Spring loaded locking pin holds table leg in place



Photo: Courtesy of Sea Ray Boats



### Complete Sets

Part #	Table Dimensions	Mounting Bracket Dimensions	Leg Height	Table Leg Extension	Table Leg Diameter	Installed Height	Table Leg Finish	Table Top Finish
75337	18" x 30" (46cm x 76cm)	5" W x 4" T (13cm W x 10cm T) .25" (.6cm) thick	19.25" (49cm)	16.5" (41cm) from vertical surface	2.25" (6cm)	16" (41cm) – plus distance from deck to mounting bracket and thickness of table top	Stainless Steel	Acrylic Coated ABS

Part #	Table Dimensions	Mounting Bracket Dimensions	Table Leg Finish	Table Top Finish
75359	18" x 30" (46cm x 76cm)	5" W x 4" T (13cm W x 10cm T) .25" (.6cm) thick	Anodized Aluminum	Acrylic Coated
75459	18" x 30" (46cm x 76cm)	5" W x 4" T (13cm W x 10cm T) .25" (.6cm) thick	Anodized Aluminum	Teak

### Pedestal

Part #	Leg Height	Leg Extension	Table Leg Diameter	Installed Height	Table Leg Finish
75343-10	18.5" (47cm)	15.625" (40cm)	2.25" (6cm)	18.5" (47cm) - plus distance from deck to mounting bracket and thickness of table top	Anodized Aluminum
75342-31	20.5" (52cm)	17.75" (45cm)	2.25" (6cm)	20.5" (52cm) - plus distance from deck to mounting bracket and thickness of table top (Leg used with 75337)	Stainless Steel
75342-92	18.25" (46cm)	11.125" (28cm)	2.25" (6cm)	18.25" (46cm) - plus distance from deck to mounting bracket and thickness of table top (Leg used with 75359 and 75459)	Anodized Aluminum



75343-10

### Mounting Bracket

Part #	Mounting Hole Dimensions	Bracket Finish
75402	5" W x 3" T (13cm W x 8cm T)	Polished 304 stainless steel



75402

## 2.25" Table Pedestals – Quick Release Table Pedestal System

Garelick's Quick Release Table Pedestal System makes your boating experience simple and easy to enjoy. Our quick release levers allow easy removal for storage and low-profile deck ring mounts provide minimal interference on your deck space.

- Complete system includes: deck ring, socket base, table mounting socket
- Marine grade polymer components resist corrosion
- Stanchion tube is Anodized aluminum with ribbed finish and tapered at both ends
- 9.25" (23cm) and 13" (33cm) stanchion posts available for converting dinette into bunk use
- Individual components available if additional mounting locations are desired

### Complete System

Part #	Stanchion Tube Height	Stanchion Tube Diameter	Installed Height
75640	25.5" (65cm)	2.25" (6cm)	27" (69cm) - Deck surface to table top underside

### Individual Components

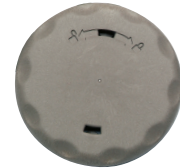
Part #	Description
75641	Deck ring cover - tan
75642	Deck ring cover - black

Part #	Description	Height	Diameter
75643	Ribbed stanchion tube	13" (33cm)	2.25" (6cm)
75644	Ribbed stanchion tube	9.25" (23cm)	2.25" (6cm)
75647	Ribbed stanchion tube	25.5" (65cm)	2.25" (6cm)

Part #	Description	Diameter
75645	Surface mt. socket base w/ deck ring	6.625" (17cm)
75646	Surface mt. deck ring	6.25" (16cm)
75648	Table adapter socket	7.25" (18cm)



75640



75641



75642



756485



75648

## 2.25" Table Pedestals – Quick Release Table Pedestal System (CONTINUED)

### Quick Release Hardware with Top Options

Part #	Description	Table Top Shape	Table Top Dimensions	Table Top Finish
75320	Quick Release System (75640)	Oval	18" x 30" (46cm x 76cm)	Acrylic coated ABS plastic
75321	Quick Release System (75640)	Rectangular	16" x 32" (41cm x 81cm)	ABS Plastic
75321-21	Attached table adapter socket (75648)	Rectangular	16" x 32" (41cm x 81cm)	ABS Plastic
75650	Quick Release System (75640)	Rectangular w/ removable cup holders	15" x 28" (38cm x 71cm)	White Polymer



### Stowable Pedestal System with Table Top

Garelick's Stowable Pedestal System with Table Top provides salon areas and pontoon decks with removable dinette table option.

- Set includes table top, ribbed tubing, surface mount and flush mount castings
- Anodized finish to resist saltwater corrosion

#### Storage Brackets

- Mount to side coaming or transom for storing table pedestals
- High density black delrin

### Complete Sets

Part #	Description	Table Height	Pedestal Diameter	Table Top Dimensions	Table Top Finish
75349	Rectangular table top, pedestal and castings	30" (76cm)	2.25" (6cm)	15" x 28" (38cm x 71cm)	White Polymer
75449	Oval table top, pedestal and castings	30" (76cm)	2.25" (6cm)	18" x 30" (46cm x 76cm)	Teak



75349  
White Polymer



75449  
Teak

### Individual Components

Part #	Description	Dimensions
75449-21	Teak oval table with attached surface mount casting	18" x 30" (46cm x 76cm)
99193	Storage mounting brackets	2.25" (6cm)



Surface Mount



Flush Mount



99193



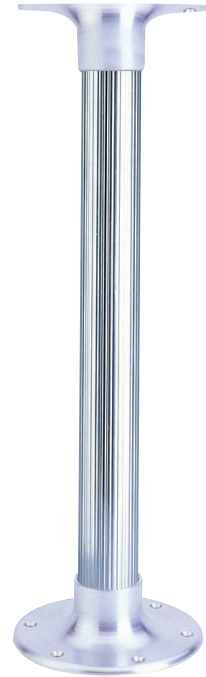
## 2.25" Table Pedestals – Aluminum

Garelick's 2.25" (6cm) pedestals provide smaller boats with removable table options designed to withstand the tough marine conditions

- 3 piece, all-aluminum provides solid table base
- Fluted profile stanchion with protective anodized finish
- Tapered on both ends for a snug, wobble-free fit

Part #	Description	Overall Height	Post	Base
75340*	Flush Mount Base with Fluted Anodized Tube, 3-piece set	29.375" (75cm)	2.25" (6cm)	7" (18cm)
75341	Surface Mount Base with Fluted Anodized Tube, 3-piece set	29" (74cm)	2.25" (6cm)	7" (18cm)
75343	Fluted Taper Stanchion Post for Conversion to "Bunk" Height (Flush Mount)	13.25" (34cm)	2.25" (6cm)	—
75344	Fluted Taper Stanchion Post for Conversion to "Bunk" Height (Surface Mount)	9.25" (23cm)	2.25" (6cm)	—
75345*	Flush Mount taper Socket Base ONLY	—	—	7" (18cm)
75346	Surface Mount taper Socket Base ONLY	—	—	7" (18cm)
75347	Fluted Taper Stanchion Post ONLY (Flush Mount)	30.25" (77cm)	2.25" (6cm)	—
75348	Fluted Taper Stanchion Post ONLY (Surface Mount)	27.625" (70cm)	2.25" (6cm)	—
75375	Flush Mount Square Socket Base	6" (15cm)	—	7" (18cm)
99139	Plug Cap	2.25" DIA. (6cm)	—	—
99193	Leg clip for 2.25" (6cm) tubing			

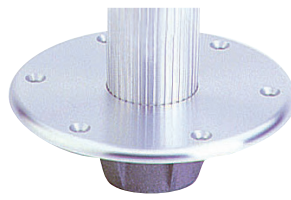
\* Flush mount bases require drilling into deck and extend 2.75" (7cm) below deck



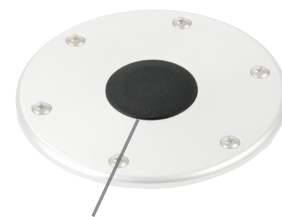
75341



75346 Surface Mount



75345 Flush Mount



99139 Plug Cap

## 2.875" Table Pedestals – Aluminum

Garelick's 2.875" (7cm) pedestals provide smaller boats with removable table options designed to withstand the tough marine conditions

- 3 piece, all-aluminum provides solid table base
- Fluted profile stanchion with protective anodized finish
- Tapered on both ends for a snug, wobble-free fit

Part #	Description	Overall Height	Post	Base
75350*	Flush Mount Base with Fluted Anodized Tube, 3-piece set	29.375" (75cm)	2.875" (7cm)	9.25" (23cm)
75351	Surface Mount Base with Fluted Anodized Tube, 3-piece set	30" (76cm)	2.875" (7cm)	9.25" (23cm)
75373	Fluted Taper Stanchion Post for Conversion to "Bunk" Height	14.5" (37cm)	2.875" (7cm)	—
75355	Flush Mount taper Socket Base ONLY	—	—	9.25" (23cm)
75356	Surface Mount taper Socket Base ONLY	—	—	9.25" (23cm)
75357	Fluted Taper Stanchion Post ONLY	31.5" (80cm)	2.875" (7cm)	—
75358	Fluted Taper Stanchion Post ONLY	28.75" (73cm)	2.875" (7cm)	—
99140	Leg Clip for 2.875" (7cm) Tubing	—	—	—

\* Flush mount bases require drilling into deck and extend 2.75"(7cm) below deck



75350



75356 Surface Mount



75355 Flush Mount



99140

## Adjustable Table Base – Gas Rise or Manual

Garelick's Adjustable Table Base comes as a gas rise or manual system that's perfect for converting dinettes to berths.

Part #	Adjustable Height	Stanchion Tube Diameter	Base Diameter	Smooth	Ribbed
75325	Manual Rise Low 14.5"– 30.75" (37cm-78cm) Protrudes 6" (15cm) below deck	2.875" (7cm)	9.25" (23cm)	—	✓
75425	Sealed Gas-powered Rise Low 14.5"– 29.5" (37cm-75cm) Protrudes 8.5" (22cm) below deck (63 lb. gas spring)	2.875" (7cm)	9.25" (23cm)	—	✓
75025	Manual Rise Low 14.5"– 30.75" (37cm-78cm) Protrudes 6" (15cm) below deck	2.875" (7cm)	9.25" (23cm)	✓	—
75225	Manual Rise Low 14.5"– 30.75" (37cm-78cm) Protrudes 6" (15cm) below deck	2.875" (7cm)	9.25" (23cm)	✓	—
99137-40	Replacement knob and rod 2.25" (6cm) long				



75425

## 3.5" Table Pedestals – Mid-Range Gas Rise Table System

Garelick's Mid-Range Gas Rise Table System provides an adjustable table to salon and cabin areas. Have it mounted directly to the deck for a permanent table or to an anodized aluminum plate for a portable option.

- Gas Spring for lift
- Cam lock collar locks height adjustment in place
- Table Top mount is a permanent anodized aluminum plate

Part #	Adjustable Height	Stanchion Tube Outside Diameter	Stanchion Tube Inside Diameter	Top Plate	Round Base
75392	63 lb. Gas Spring Low 12.5"– 26" (32cm-66cm) Protrudes 11.5" (29cm) below deck	3.5" (9cm)	2.875" (7cm)	11" x 15" (28cm x 38cm)	9.25" (23cm)
75394	63 lb. Gas Spring Low 14.5"– 28.5" (37cm-72cm) Protrudes 9.5" (24cm) below deck	3.5" (9cm)	2.875" (7cm)	9" x 13" (23cm x 33cm)	9.25" (23cm)
75392-67	40 lb. Gas Spring Low 16"– 28" (41cm-71cm)	3.5" (9cm)	2.875" (7cm)	9" x 13" (23cm x 33cm)	9.5" (24cm)



75392



### Gas Rise Yacht Table Base

Garelick's Gas Rise Yacht Table Base is ideal in workrooms, galley or pilot house. Crews can adjust table heights to accommodate work environments and the ultra-smooth gas-powered operation makes height adjustments effortless.

- Ultra-smooth adjustable gas powered operation
- Self-standing with table top support
- Polished and anodized finish to resist saltwater corrosion

Part #	Adjustable Height	Stanchion Tube	Stanchion Tube Inside Diameter	Top Plate	Self-standing Square Base
75460	40 lb. Gas Spring Low 20"- 29" (51cm-74cm)	3.5" (9cm)	2.875" (7cm)	9"x 13" (23x33cm) .25 (1cm) thick	19" (48cm) .375 (1cm) thick



75460

### 4.0" Table Pedestals – 2-Stage Gas Rise Yacht Table Pedestal

Garelick's 2-Stage Gas Rise Yacht Table Pedestal is designed to withstand rugged work conditions. Crews can adjust table heights to accommodate their work environment. Ideal in workrooms, galley or pilot house, crewman can adjust table heights with an easy-to-use lifts.

- Ultra-smooth adjustable gas powered operation
- Robust design provides adjustable height in salon/cabin and back deck areas
- Adjustable height with two polished stainless handles
- Polished and anodized finish resist saltwater corrosion

Part #	Adjustable Height	Stanchion Tube	Stanchion Tube Inside Diameter	Top Plate	Round Base
75470	56 lb. Gas Spring Low 12.75"- 28" (32cm-71cm)	4" (10cm), 3.5" (9cm)	2.875" (7cm)	12"x 12" (30cm x 30cm)	12" (30cm)



75470



Closed

# BOARDING LADDERS & FOOTRESTS



# BOARDING LADDERS & FOOTRESTS

## Boarding Ladders



34

Garelick boarding ladders are compact and designed to make it easy to install, board, stow, and maintain.

## Transom Ladders



44

Transom ladders offer a unique combination of stowability and simplicity providing boaters quick, easy and safe re-boarding.

## Footrests



48

Designed with grooved treads and rounded corners, Garelick footrests provide added comfort when resting on stepping surfaces.





# Boarding Ladders Overview

## Installation Maintenance & Safety:

### Product Selection

It's important to choose the proper size ladder for location and correct fit. Ladders that extend 2-3 rungs below the water's surface will provide the best comfort and function.

### Installation

Easy, step by step installation instructions are included with all Garelick ladders. Ladders feature standoffs to provide adequate support against the transom or hull when in use.

### Maintenance

Local weather conditions may contribute to minor corrosion. Aluminum and stainless steel are not completely free from corrosion attack. Regular fresh water rinsing and periodic cleaning with a mild abrasive will help to retain luster.

### Safety

Periodically check and re-tighten mounting hardware. Normal operation and vibration may loosen hardware over time.



## Transom Platform with Telescoping Ladder FOR BOATS WITH OUTBOARD MOTORS

- One stainless wraparound rail and one underside support rail (both 1" (3cm) diameter, Reversible)
- Durable HDPE platform is pre-drilled for easy assembly
- Mounts at 10 degree angle on transom
- Ladder steps telescope down easily
- Ladder slides up and under platform for stowage
- Flat Poly treads for extra comfort
- 275 Lb weight capacity

Part #	Dimensions	Platform Dimensions	Height above and below platform	Length	Width
19536	18" W x 19" D x .75" T (46x48x2cm)	18" W x 15" D x .75" T (46x38x2cm)	11.5" (29cm)	13.5" (34cm) / 23.5" (60cm) stowed/deployed	11.25" (29cm)
50.744	Replacement wrap around rail				
50.745	Replacement strut				
06.303	Replacement platform only				



## Transom Platform with Telescoping Ladder FOR BOATS WITH I/O MOTORS

- Durable HDPE platform is pre-drilled for easy assembly
- Mounts at 10-degree angle on transom
- Ladder steps telescope down easily
- Ladder slides up and under platform for stowage
- Flat Poly treads for extra comfort
- Two 1" (3cm) diameter stainless wrap around rails
- 275 Lb weight capacity

PART #	Step Count	Overall Dimensions	Height Above Platform	Deployed Length	Stowed Dimensions	Platform Dimensions
19546	2	18" W x 19" D x .75" T (46x48x2cm)	11.5" (29cm)	23.5" (60cm)	13.5" (34cm), W 11.25" (29cm)	18" W x 15" D x .75" T (46x38x2cm)
50.744	Replacement wrap around rail					
06.303	Replacement platform only					





## Swim Platform With Ladder

### FOR BOATS WITH OUTBOARD MOTORS

- Fold down (19535) and telescoping (19537) options available
- Mounts at 10 degree angle on transom
- Durable HDPE platform is pre-drilled for easy assembly
- Ladder folds over platform for stowage
- Flat poly treads for extra comfort
- One stainless rail and one underside support rail (both 1" (3cm) diameter, Reversible)
- 275 Lb weight capacity



19535

Part #	Step Count	Overall Dimensions	Height Above Platform	Ladder Dimensions
19535	1	18" W x 19" D (46cm x 48cm)	11.5" (29cm)	Ladder: 13"L x 14.5"W (33x37cm)

Part #	Step Count	Overall Dimensions	Height Above Platform	Deployed Length	Stowed Dimensions
19537	2	18" W x 19" D (46cm x 48cm)	11.5" (29cm)	23.5" (60cm)	L: 13.5" (34cm) W: 11.25" (29cm)

Part #	Description	Dimensions
19530	Platform only with 1 wrap around rail and 1 underside support rail	18"W x 15"D x .75"T (46cm x 38cm x 2cm)
50.744	Replacement wrap around rail	
06.303	Replacement platform only	
50.745	Replacement strut	





## Swim Platform With Ladder

### FOR BOATS WITH I/O MOTORS

- Fold down (19545) and telescoping (19547) options available
- Mounts at 10-degree angle on transom
- Durable HDPE platform is pre-drilled for easy assembly
- Stainless steel hardware
- 1" (3cm) Diameter stainless steel
- Ladder folds over platform for stowage
- Flat poly treads for extra comfort
- Two 1" (3cm) diameter stainless wrap around rails
- 275 Lb weight capacity

Part #	Step Count	Overall Dimensions	Height Above Platform	Ladder Dimensions	
19545	1	18" W x 19" D (46cm x 48cm)	11.5" (29cm)	Ladder: 13"L x 14.5"W (33cm x 37cm)	
Part #	Step Count	Overall Dimensions	Height Above Platform	Deployed Length	Stowed Dimensions
19547	2	18" W x 19" D x .75" T (46cm x 48cm x 2cm)	11.5" (29cm)	23.5" (60cm)	L: 13.5" (34cm) W: 11.25" (29cm)
50.744	Replacement wrap around rail				
06.303	Replacement platform only				



## Over Platform Telescoping Ladder

- Steps – fold out and over, telescope down easily
- Compact stowage – steps fold over flat on platform
- Flat poly treads for increased comfort
- Standard folding gudgeons
- Bungee cord securing strap included
- Nylon bushings between ladder sections prevent inadvertent deployment when flipping ladder into the water
- Stainless steel – rated to 400 lbs.

Part #	Step Count	Overall Height/ Width	Deployed Length	Stowed Length	Gudgeons Length
19615-61	2	1.25" (3cm), W: 11.25" (29cm)	23.5" (60cm)	13.5" (34cm)	5.75" (15cm)
19616-61	3	1.25" (3cm), W: 11.50" (29cm)	34.5" (88cm)	14.5" (37cm)	7" (18cm)
19617-61	4	1.5" (4cm), W: 12" (30.5cm)	45.5" (116cm)	15.5" (40cm)	6.5" (17cm)



### Under Platform Telescoping Ladder

- Steps telescope down easily
- Ladder slides up, under platform for stowage
- Flat poly treads for increased comfort
- Mounting hardware and securing strap included
- Self-locking angled support bracket
- Bungee cord securing strap included
- Stainless Steel – rated to 400 lbs.

Part #	Step Count	Overall Height/Width	Deployed Length	Stowed Length
19622-61	2	2.5" (6cm), W: 11.38" (29cm)	23.25" (59cm)	13.5" (34cm)
19623-61	3	2.5" (6cm), W: 11.63" (30cm)	34.5" (88cm)	14.5" (37cm)



19622-61



### Over Platform Telescoping Ladder WITH BLACK POLY STEPS

- Steps – fold out and over, telescope down easily
- Compact stowage – steps fold over flat on platform
- Comfortable black contour traction molded steps
- Standard folding gudgeons
- Securing strap included
- Nylon bushings between ladder sections prevent inadvertent deployment when flipping ladder into the water
- Designed, Engineered & Assembled in the U.S.A.
- Stainless steel – rated to 275 lbs.

Part #	Step Count	Overall Height/Width	Deployed Length	Stowed Length	Gudgeons Length
19655	2	1.25" (3cm), W: 14.5" (37cm)	23.5" (60cm)	13.5" (34cm)	5.75" (15cm)
19656	3	1.25" (3cm), W: 14.5" (37cm)	34.5" (88cm)	14.5" (37cm)	7" (18cm)
19657	4	1.5" (4cm), W: 14.5" (37cm)	45.5" (116cm)	27.5" (62cm)	7" (18cm)



19656



STOWED

## Over Platform Telescoping Ladder

- Steps – fold out and over, telescope down easily
- Compact stowage – steps fold over flat on platform
- Flat poly treads for increased comfort
- Standard folding gudgeons with convenient grab bar for easier boarding
- Bungee cord securing strap included
- Nylon bushings between ladder sections prevent inadvertent deployment when flipping ladder into the water
- Stainless steel – rated to 400 lbs.

Part #	Step Count	Overall Height/Width	Deployed Length	Stowed Length	Gudgeons Length
19676	3	1.25" (3cm), W: 11.50" (29cm)	34.5" (88cm)	14.5"(37cm)	7" (18cm)
19677	4	1.5" (4cm), W: 12" (31cm)	45" (114cm)	15.5" (40cm)	8" (20cm)



19676



FOLDED

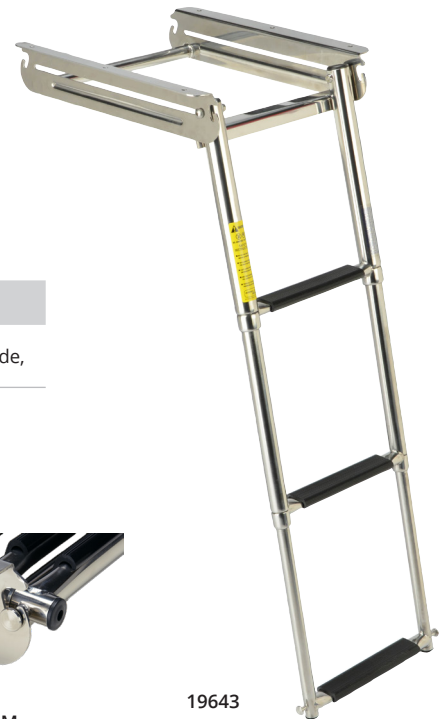


GRAB BAR

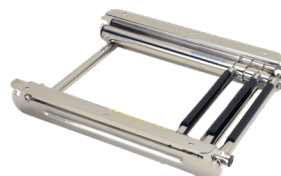
## Under Platform Sliding Ladder

- Designed for under platform use – stows easily and compactly
- Ideal for installations under swim platforms or under the deck on bow or side of pontoon boats
- Ladder stows compactly within its own length
- Spring loaded self-locking for stowage
- Flat poly treads for increased comfort
- Stainless steel – rated to 400 lbs.

Part #	Step Count	Overall Height/Width	Deployed Length	Stowed Length	Support Frame Dimensions	Mounting Holes
19643	3	3" (8cm), W: 11.5" (29cm)	33.5" (85cm)	16" (41cm)	L 15.85" (40cm), W 13.88" (35cm)	(3) 1/4" mount holes on each side, 6" spacing



19643



FOLDED



LOCKING MECHANISM



## Sport/Diver Ladders

Garelick Sport/Diver Ladders are versatile and detach and mount easily to platforms and extension brackets providing an unobstructed transom area. These ladders are convenient for scuba diving, swimming, water skiing, and fishing.

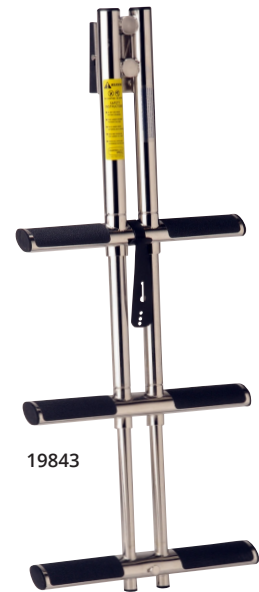
### Telescoping Stainless Steel Sport Diver Ladder

- Comfortable non-skid step surface
- Stainless Quick Release Transom Mounting Bracket (99180) included
- Easy boarding for swimmers or divers with fins and heavy gear
- Dual 1.25" (3cm) center post design – angled mount for stair-like usability
- Superior corrosion resistant electropolished stainless steel
- Includes Stainless Quick Release Transom Mounting Bracket (99180)
- Heavy Duty – rated to 400 lbs (181kg) boarding weight

Part#	Step Count	Length	Width
19843	Transom Mount 3 Step	16.75" (43cm)/32.5" (83cm) stowed/deployed	13.5" (34cm)
19844	Transom Mount 4 Step	19.5" (50cm)/42" (107cm) stowed/deployed	13.5" (34cm)
19626	Platform Mount 3 Step	17" (43cm)/34" (86cm) stowed/deployed	13.5" (34cm)



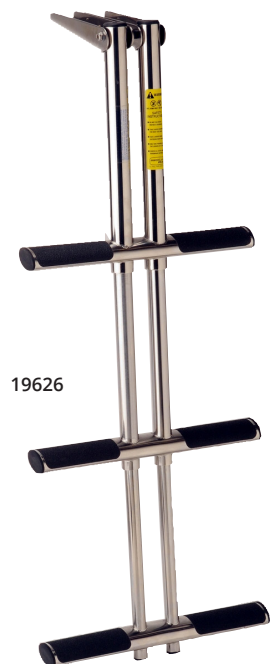
FOLDED



19843



FOLDED



19626

## Under Platform Double Tube Telescoping Dive Ladder

- Unique design -30 degree angle for ease of use
- Electro-polished stainless steel
- Dual vertical telescoping tube body
- Smooth slide with nylon bushing between ladder sections prevent galling and inadvertent deployment
- Spring loaded locking system with locking plate
- Oval shaped steps with non-skid surface for comfort
- Rated to 400 lbs.

Part #	Step Count	Length	Width
19636	3 Step	16.5" (42cm)/31.5" (80cm) stowed/deployed	Mounting Frame 7" (18cm) Ladder's Steps 13" (33cm)



19636

PLATFORM NOT INCLUDED

## Stainless Steel Sport Diver Ladder

- Superior corrosion resistance electro-polished stainless steel
- Easy Boarding for Swimmers or Divers with fins or heavy gear
- 1.75" Diameter center post design – angled mount for stair-like usability
- Comfortable non-skid step surface
- Designed for all vertical, horizontal, and breakaway mounting hardware options
- Stainless Quick Release Transom mounting bracket (99180) included
- Optional storage brackets (99196) available
- Heavy Duty - rated to 400 lbs. (181kg) boarding weight

Part #	Step Count	Length	Width
19833	3 Step	36" (91cm)	14.5" (37cm)
19834	4 Step	48" (122cm)	14.5" (37cm)
99196	Storage clips for 19833 and 19834		



19833

### Related Product



See Page 43



99196

## Sport Diver Ladder

- Oval steps with textured, painted surface
- White powder coat paint
- Angled design for stair-like ease of boarding
- 2.25" Diameter aluminum center vertical allows easy use with diving gear
- Designed for all vertical, horizontal, and breakaway mounting hardware options on page 43
- Stainless Steel Quick Release Transom mounting bracket (99180) and ladder storage brackets (99193) included
- Heavy duty – rated to 400 lbs. (181kg) boarding weight

Part #	Step Count	Length	Width
19802	2 Step	28" (71cm)	13" (33cm)
19803	3 Step	38" (97cm)	13" (33cm)
19804	4 Step	48" (122cm)	13" (33cm)
99210-18	Replacement hex bolt kit with end caps		

### Related Product



See Page 43



19803

## Bass Boat Transom Ladder

- Oval steps with textured, painted surface
- Black powder coat paint
- Angled design for stair-like ease of boarding
- Compact 2 step for low freeboard transoms
- 2.25" Diameter aluminum center vertical
- Stainless Steel Quick Release mounting bracket (99180) included
- Optional Storage Brackets available (99193)
- Rated to 400 lbs.

Part #	Step Count	Length	Width
19812	2 Step	28" (71cm)	13" (33cm)
99193	Storage bracket for 19812		
99210-18	Replacement hex bolt kit with end caps		

### Related Product



See Page 43



19812

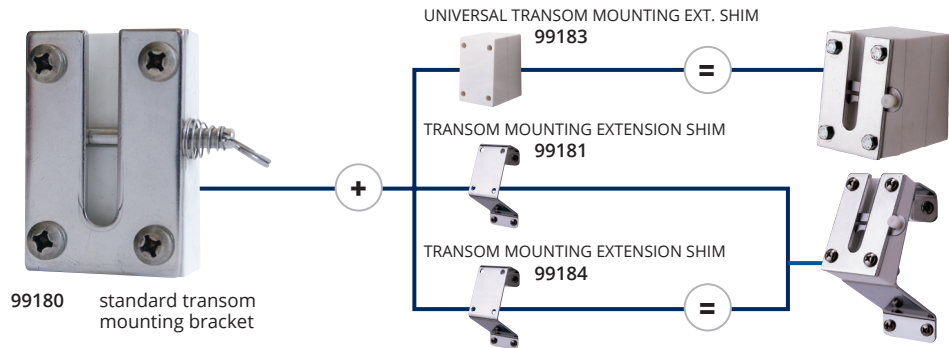


99193

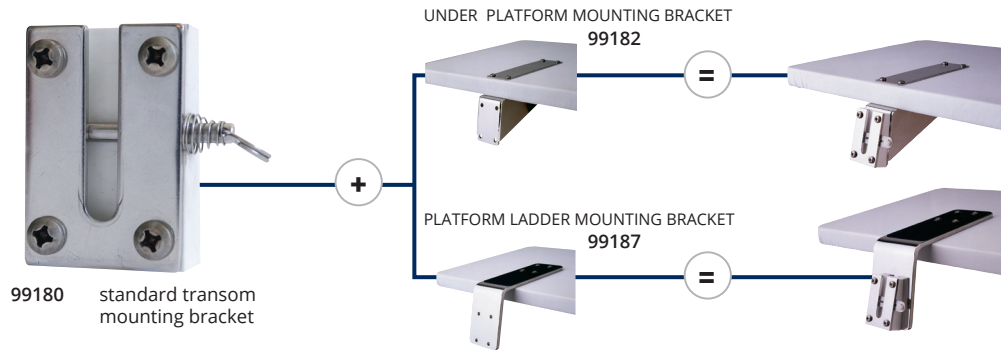


## Sport/Diver Ladder Mounting Options

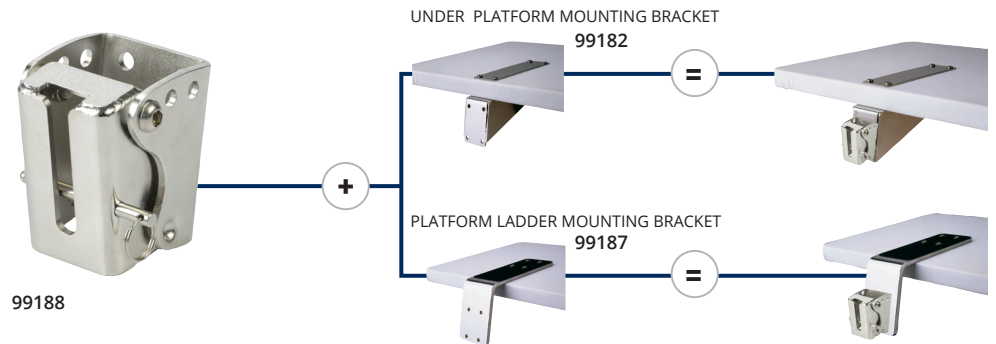
### Vertical Transom Mounting Options



### Horizontal Platform Mounting Options



### Breakaway Hinge Mounting Options



Part #	Width	Height	Depth	Notes
99180	2.5" (6cm)	3.75" (10cm)	1.375" (3cm)	Included with all sport/diver series ladders. 1" (3cm) thick poly spacer 10 degree angle, with lock and stainless steel face plate mounting bracket, mounting hole diameter: 5/16" (1cm)
99181	2.75" (7cm)	3.62" (9cm)	2" (5cm)	Extends ladder 2" farther from the transom. Used with face plate and 10 degree poly spacer (99180) included with ladder. Made of stainless steel, 2.75" W x 3.62" H (7x9cm)
99182	2.5" (6cm)	3.75" (10cm)	9" (23cm)	Allows ladder to be mounted on any poly, teak, fiberglass, or aluminum platform. Mounts underneath platform and includes a top plate which sandwiches platform in between brackets. Used with face plate and 10 deg poly spacer (99180) included with ladder
99183	2.75" (7cm)	3.62" (9cm)	3" (7.5cm)	Solid poly block that can be custom cut at the angle necessary to allow the ladder to be mounted at 15 degrees off vertical in special applications. Used with stainless face plate included with ladder.
99184	2.75" (7cm) 4"	3.62" (9cm)	3" (7.5cm)	Extends ladder 3" farther from the transom. Used with face plate and 10 degree poly spacer (99180) included with ladder. Made of stainless steel, 2.75" W x 3.62" H (7x9cm)
99187	(10cm)	6.25" (16cm) 4"	10" (25cm)	Especially designed for use on built-in platforms and euro-style boats. Utilizes 99180 included with ladder. Made of Stainless Steel. 15 degree angle.
99188	3" (8cm)	(10cm)	3.25" (8cm)	Compatible with Models' 19802, 19803, 19804, 19833, 19834 and 19812 mounting hardware. Made of stainless steel, the adjustable +/- 15° features a breakaway hinge allowing the ladder to ride on top of the water. Will also work with 19843 and 19844.

## Out of the way, yet instantly available: the ladder in transom

This patented "invisible" ladder system can be integrated stylistically into even the sleekest of hull shapes, opening entirely new avenues in safety and design.

### Invisible

When stowed, the Boarding Ladder sits fully within the transom of the boat. The only component of this revolutionary boarding system visible is a simple and stylish faceplate with an integrated locking and release feature.

### Quick & Easy

From either on board or in the water, the Boarding Ladder deploys instantly and easily with a simple one-handed tug on the release pin. Once out of its storage tube, the ladder's traction molded steps simply fold out, creating a sturdy and convenient series of steps for re-boarding.

### Versatile

There is a Boarding Ladder for just about any size and shape boat. Available in 3 and 4 step lengths, in both manual and semi-automatic configurations this ladder may be the most important feature you don't see.



## Integrated Transom Ladder

- For OEM installation only
- Designed for boats with negative 15-degree transom or positive based on the part number
- Offered in several styles to fit most OEM boarding applications
- Completely hidden from view when not in use
- Ladder unlocks and slides aft and into the water in one fluid motion
- This unique combination of stowability and simplicity helps provide boaters quick, easy and safe reboarding with no on board assistance.
- Compact operation: Steps open and close independently
- Semi-auto operation: All steps on common side open and close simultaneously

Part #

19902-##

### IMPORTANT:

There are many other versions available based on the boat manufacturer's specifications. Please consult your boat manufacturer for your correct ladder part number.



19902-##

19902-##

19902-##

## Compact II Transom Ladder Invisible, quick & easy and readily accessible

- Helps provide unassisted reboarding
- Complete ladder stows within transom and hull
- Steps open & close independently for ease of boarding
- Quick release ring w/ self-locking latch deploys ladder from storage
- Anodized aluminum channel body deploys out at 15-degree angle
- Available for aftermarket installation
- 275 Lb weight capacity

Part #	Step Count	Length	Width	Mount Plate Dimensions
19700	3 Step	32.5" (83cm)	2" (5cm)	5" H x 4.5" W x 1" D (13cm x 11cm x 3cm)

19700



## Transom Platform Ladder Step – Stainless Steel

- Fold down ladder mounts to transom platform
- Step folds up onto platform for flat stowage
- Easy to install, includes 4.5" gudgeons and securing strap
- Fits 19530 swim platform (Page 36)
- Rated to 275 lbs.

Part #	Step Count	Overall Height/Width
19512	1	13" (33cm), W: 14.5" (37cm)

19512

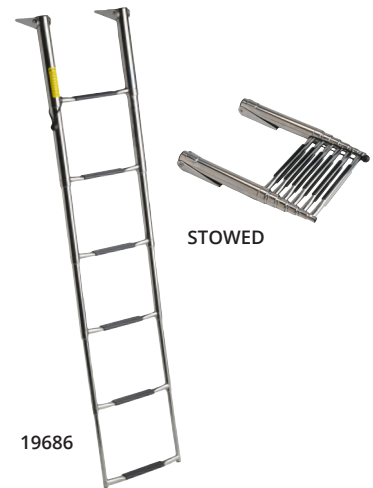




### 6 Step Wide Body Over Platform Telescoping Ladder

- Wide body design and extra length – make it easier and more comfortable to use
- Two extra steps into the water adds 24" (61cm) length – overall length deployed over 5 ½'!
- For larger boat installations at transom platform
- 6 Steps fold out and over, telescope down easily
- Compact stowage – steps fold over onto platform
- Flat poly treads for increased comfort and traction
- Heavy duty 6" folding gudgeons for easy mounting
- Bungee cord securing strap included
- Nylon bushings between ladder sections provide precision sliding
- Full 2" (5 cm) diameter main body stainless steel – weight capacity to 400 lbs.

Part #	Step Count	Overall Height/Width	Deployed Length	Stowed Length	Gudgeons Length
19686	6	2.25" (6cm), W: 16" (41cm)	68.5" (174cm)	18" (46cm)	6" (15cm)



### Telescoping Transom Ladder

- Designed to allow for boarding at transom – mounts directly on transom
- 4 Steps allow for comfortable angled step up access under water line
- Folds down and telescopes into water
- Self-locking brackets hold ladder secure against transom
- Bungee cord securing strap included
- Nylon bushings between ladder sections provide smooth deployment
- Stainless steel – rated to 400 lbs.

Part #	Step Count	Overall Height/Width	Deployed Length	Stowed Length
19683	3	1.5" (4cm), W: 12" (31cm)	23.5" (60cm)	14.75" (37cm)
19684	4	1.5" (4cm), W: 12" (31cm)	34.5" (88cm)	15.75" (40cm)



### Telescoping Stainless Steel Pontoon Boarding Ladder WITH STAINLESS STEEL SHUR-LOC CATCH MOUNTING HARDWARE

- Easy to board, stow and maintain
- Electropolished Stainless Steel Tubing
- Compact design allows ladder to be stowed in lockers underneath pontoon furniture
- Comfortable black contour traction molded steps.
- One-piece all aluminum adjustable standoffs with cushioned rubber tips
- Attaches easily to deck for temporary or permanent mounting with included Shur-Loc catches (76000)
- Made in the U.S.A.
- Rated to 400 lbs.

Part #	Step Count	Overall Height/Width	Deployed Length	Stowed Length
12340-G	4	16" (41cm)	51" (130cm)	32" (82cm)



Related Product



76000



### Removable Folding Pontoon Ladder

- Folds down to 4 steps; hooks fold and ladder stows in locker underneath furniture
- Securing clip included
- Sturdy design with over rail hooks for easy boarding
- Lightweight anodized aluminum 1" (3cm) diameter resists corrosion
- Attaches easily to deck at side gate for temporary or permanent mounting with included
- Shur-Loc catches (76000)
- Comfortable contour black traction molded steps.
- Includes Shur-Loc stainless steel latch bolts and deck mounting hardware
- Made in the U.S.A.
- Shur Loc Ladder Catches - Bracket mounts to deck for attaching latch type boarding ladders
- Shur Loc Ladder Catches - Allows permanent or temporary mounting
- Shur Loc Ladder Catches - Stamped stainless
- Rated to 400 lbs.



12350

Part #	Step Count	Overall Height/Width	Deployed Length	Stowed Length
12350	4	42" (107cm), W: 16" (41cm)	30" (76cm)	29" (74cm)

Related Product



76000



### Premium Folding Pontoon Transom Boarding Ladder

- Permanent mount at transom, ideally at stern gate door
- Comfortable black contour traction molded steps extra deep for added step surface
- Folds down for easy boarding
- Durable 1" (3 cm) diameter anodized aluminum tube
- Includes securing clip, and second step abuts end of pontoon log
- Designed, engineered & assembled in the U.S.A.
- Rated to 400 lbs.



12380

SECOND STEP

Part #	Step Count	Overall Height/Width	Folded Length	Deck - 2nd step dimensions	Step surface dimensions
12380	2 - 4	46" (117cm), W: 16" (41cm)	14" + 32" (36cm + 81cm)	12" (30cm)	5" x 12" (13cm x 31cm)

### Pontoon Swim Ladder

- Use at side gate or transom
- Comfortable white traction molded poly steps.
- Attaches easily to deck with included Shur-loc catches
- Shur-loc catch brackets (76000) allow for permanent or removable mounting
- Vinyl sleeves on verticals protect pontoon
- Hooks fold flat for stowage
- Durable 1" (3cm) diameter anodized aluminum tube - rated to 250 lbs.
- Made in the U.S.A.

Part #	Step Count	Overall Height/Width
15240-G	4	50" (127cm), W: 15" (38cm)



15240



## Footrests

### Rounded White Polymer Footrest

- Heavy duty wraparound aluminum extrusion with brushed anodized aluminum finish
- High density, Polyethylene traction grooved step

Part #	Dimensions
27415	7.5" H x 15" W x 8.25" D (19cm x 38cm x 21cm)



27415

### Rounded White Vinyl Footrest

- Heavy duty wraparound aluminum extrusion with brushed anodized aluminum finish and white vinyl treads

Part #	Dimensions
27316	7.5" H x 15" W x 8.25" D (19cm x 38cm x 21cm)



27316

### Black Vinyl Footrest

- Durable 1" (3cm) black anodized aluminum uprights and stamped support brackets with black vinyl treads

Part #	Dimensions
27315	7.5" H x 15" W x 8.25" D (19cm x 38cm x 21cm)

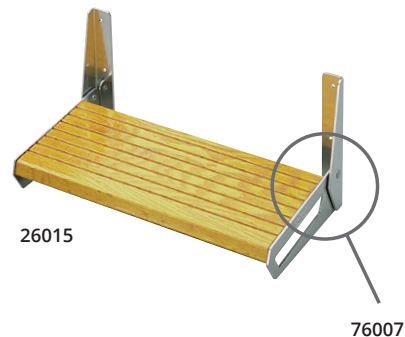


27315

### Oak Footrest

Part #	Dimensions
26015	7.5" H x 15" W x 8.25" D (19cm x 38cm x 21cm)
26018	7.5" H x 18" W x 8.25" D (19cm x 6cm x 21cm)

Part #	Description	Dimensions
76006	Polished aluminum folding brackets only	7.5" H x 8.25" D (19cm x 21cm)
76007	Anodized aluminum folding brackets only	7.5" H x 8.25" D (19cm x 21cm)



26015

76007

**NOTE:** These items are designed as footrests and are not intended to be used as steps.



## Teak Footrest

- Heavy duty wraparound aluminum extrusion with brushed anodized aluminum finish and teak inserts.

Part #	Dimensions
27515	7.5" H x 15" W x 8.25" D (19cm x 38cm x 21cm)



27515

## Adjustable Footrest

- Heavy duty wraparound aluminum extrusion with brushed anodized aluminum finish and teak treads
- Provides added comfort for multiple users at helm
- 4 positions – provides 5" of vertical height adjustment
- Angled 18 degrees down for more comfort when resting on stepping surface
- Traction grooved step surface with teak inserts
- Rounded corner design helps eliminate scraping ankles

Part #	Dimensions
27516	7.5" H x 15" W x 8.25" D (19cm x 38cm x 21cm)



27516



## White Polymer Footrest

- Stamped aluminum folding side brackets
- High density, polyethylene traction grooved step

Part #	Dimensions
26115-G	7.5" H x 15" W x 8.25" D (19cm x 38cm x 21cm)



26115

**NOTE:** These items are designed as footrests and are not intended to be used as steps.



# DOCK ACCESSORIES





# DOCK ACCESSORIES

## Boat Hooks



52

Garelick boat hooks are designed with molded ribbing for easy grip and are adjustable for efficient retrieval of dock lines.





## Telescoping Adjustable Length Boat Hooks for Compact Stowage

### Premium Telescoping Boat Hooks



55170  
Made in the U.S.A.

Part #	Overall Height	Head Type	Sections	Diameters
55170	Tele 3.5' -> 8'	Marine Composite	3	1", 1.125", 1.25" (25, 29, 32mm)
55175	Tele 56" -> 12'	Marine Composite	3	1", 1.125", 1.25" (25, 29, 32mm)

### Standard Telescoping Boat Hooks



55190  
Made in the U.S.A.

Part #	Overall Height	Head Type	Sections	Diameters
55190	Tele 4'-7.5' (122-229cm)	Marine Composite	2	1", 1.125" (25, 29mm)

### Standard Fixed Length Boat Hooks



55006  
Made in the U.S.A.

Part #	Overall Height	Head Type	Sections	Diameters
55004	4' Poly Head	Marine Composite	1	1" (25mm)
55006	6' Poly Head	Marine Composite	1	1" (25mm)
55008	8' Poly Head	Marine Composite	1	1" (25mm)

# Limited Warranty



Our Limited Warranty is as functional and straightforward as our products. Since we design and build them to provide you with years of satisfaction, all Garelick products are sold with a three year limited warranty against defects in material and workmanship.

## What We Will Do

In the unlikely event that a defect in material or workmanship exists during the warranty period, at our expense, we will promptly replace the product.

## What You Should Do

All we require is that you call or write us to discuss the claim. We will then work with you regarding the warranty of your product

## What Is Not Covered

It is important to note that our Limited Warranty is not an unconditional guarantee for the life of this product. Garelick products are made from the finest materials available under our exacting manufacturing standards. But, like any other product, they are not indestructible. Therefore, the Limited Warranty does not cover product damage caused by abuse, neglect, improper installation, normal wear and tear, or the failure to perform routine maintenance.

## Garelick Marine Products Are Widely Available Throughout Better Stores Everywhere

We suggest contacting your favorite store dealer or internet fulfillment center where you have the best chance to find our products. After checking availability, if the model(s) you have chosen is not in stock, your dealer can order it for you from their stocking wholesaler.

Our products are also available from several of the leading marine catalog/retailers that may be in your area. For availability outside the United States, email us and we will provide you with information on where to find our products.

## Disclaimer And Limitations

The implied warranties of merchantability and fitness for a particular purpose are expressly disclaimed. To the extent that they cannot be disclaimed, the implied warranties are limited in duration to the life of the express limited warranty. Incidental and consequential damages are excluded from coverage under this warranty. Some states/countries do not allow for the disclaimers, limitations and exclusions identified above, as a result, they may not apply to you. This warranty gives you specific legal rights, and you may also have other legal rights which vary from state to state and country to country.

If you have any questions or comments regarding your Garelick product you may reach us by writing to our headquarters in St. Paul Park, MN, phone us at 1.651.459.9795 or email us at [csmail@garelick.com](mailto:csmail@garelick.com). You will find that we apply the same standard of excellence to our customer service as we do to our products.

Part #	Page	Part #	Page	Part #	Page	Part #	Page	Part #	Page
6.303	35	55006	52	75415	12	99182	43	78312-20	11
6.388	17	55008	52	75425	30	99183	43	78312-60	10
50.744	35	55170	52	75430	12	99184	43	78313-10	11
50.745	35	55175	52	75431	12	99187	43	78313-20	11
12350	47	55190	52	75432	12	99188	43	78315-60	10
12380	47	75020	21	75433	12	99191	20	78319-60	10
19512	45	75025	30	75434	12	99193	27	99137-40	12
19530	36	75028	14	75449	27	99196	41	99137-41	13
19535	36	75030	14	75459	25	12340-G	46	99210-18	42
19536	35	75031	14	75460	31	15240-G	47	99998-31	10
19537	36	75032	14	75470	31	19615-61	37		
19545	37	75033	14	75515	13	19616-61	37		
19546	35	75034	14	75528	13	19617-61	37		
19547	37	75035	14	75530	13	19622-61	38		
19626	40	75080	18	75531	13	19623-61	38		
19636	41	75081	18	75532	13	19902-##	44		
19643	39	75082	17	75533	13	21000-80	12		
19655	38	75083	17	75534	13	26115-G	49		
19656	38	75090	18	75535	13	74001-G	19		
19657	38	75091	18	75635	13	74003-G	19		
19676	39	75120	21	75637	12	75002-70	19		
19677	39	75225	30	75640	26	75002-75	19		
19683	46	75228	14	75641	26	75235-G	14		
19684	46	75320	27	75642	26	75321-21	27		
19686	46	75321	27	75643	26	75340*	28		
19700	45	75325	30	75644	26	75342-31	25		
19802	42	75337	25	75645	26	75342-92	25		
19803	42	75341	28	75646	26	75343-10	25		
19804	42	75343	28	75647	26	75362-20	11		
19812	42	75344	28	75648	26	75363-20	11		
19833	41	75345	28	75650	27	75392-67	30		
19834	41	75346	28	76006	48	75436-G	12		
19843	40	75347	28	76007	48	75437-G	12		
19844	40	75348	28	77000	20	75449-21	27		
20000	16	75349	27	78318	15	75628-G	13		
20001	16	75350	29	78325	15	75636-G	12		
21000	16	75351	29	78515	15	78303-60	10		
21001	16	75355	29	78524	15	78307-10	11		
22000	16	75356	29	78530	15	78307-20	11		
22001	16	75357	29	99023	17	78308-10	11		
26015	48	75358	29	99026	16	78308-20	11		
26018	48	75359	25	99027	16	78309-10	11		
27315	48	75373	29	99036	16	78309-20	11		
27316	48	75375	28	99127	16	78310-10	11		
27415	48	75392	30	99139	28	78310-20	11		
27515	49	75394	30	99140	29	78311-10	11		
27516	49	75402	25	99180	43	78311-20	11		
55004	52	75404	14	99181	43	78312-10	11		





Garelick  
644 2nd St  
St Paul Park, MN 55071  
p 651.459.9795  
garelick.com

©2023 Garelick  
All rights reserved

Unauthorized copying or  
reproduction is a violation  
of applicable laws.

GAR\_CAT\_003\_0722