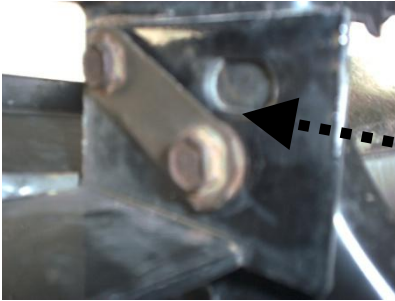


94-02 Dodge 1500-3500 GRILLE GUARD INSTALLATION INSTRUCTIONS.
Part # 200-49-9004



Step 2: Install bumper support bracket behind bumper. Reinstall bumper bolts that were removed in step 1.



Step 3: Align grille guard to truck and mark holes. Drill 1/2 inch holes (2 per side) through chrome bumper and bumper support bracket (installed in step 2).



Step 4: Check alignment of grille guard to truck measuring outside of loop to the body. Tighten all bolts!

Bolt Bag Contents	
Quantity	Description
4	1/2" X 1-3/4" bolts
4	1/2" Hex nuts
4	1/2" Loc Washer
8	1/2" flat washers
2	Bumper support bracket
22	Total pieces