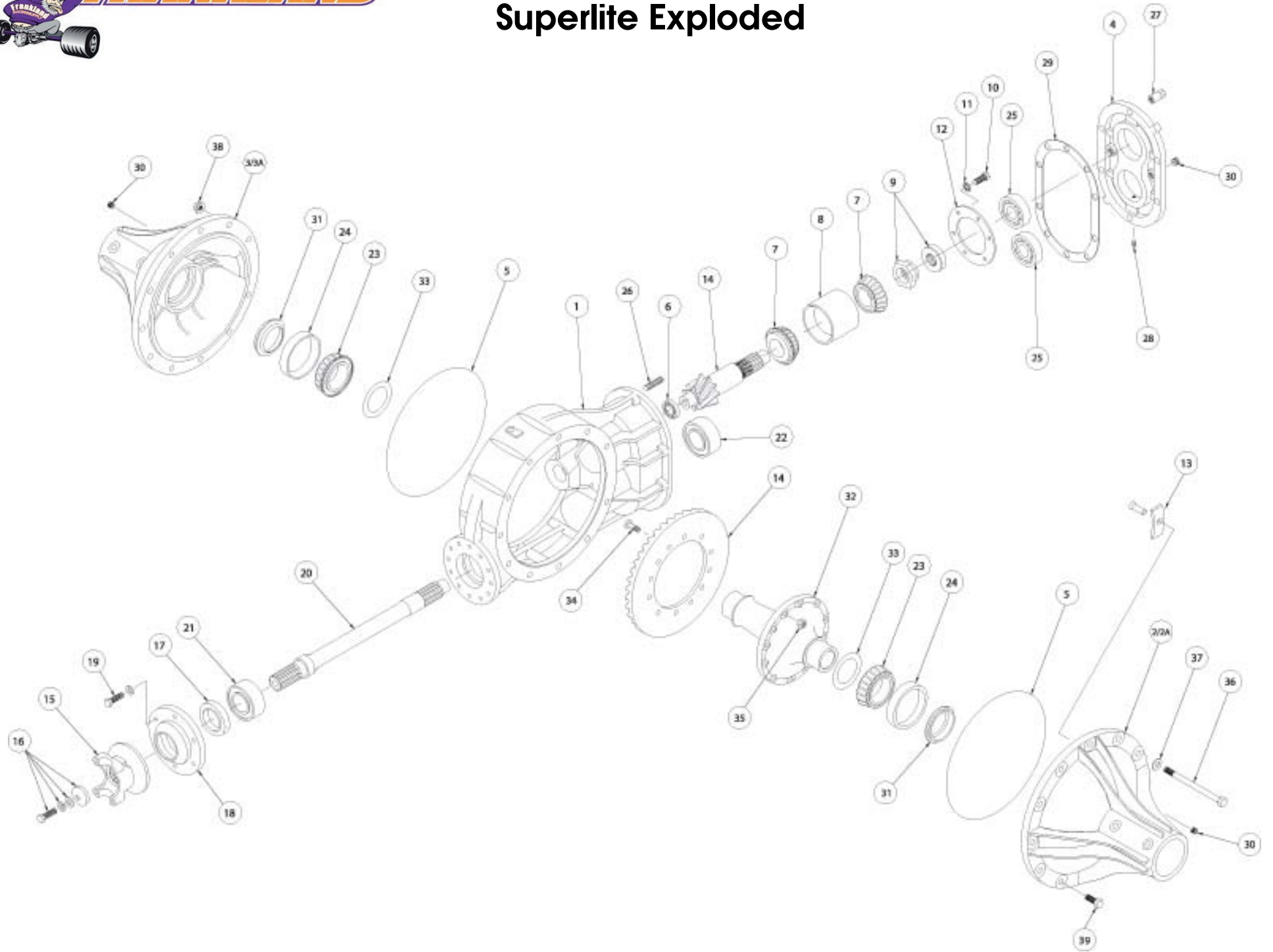




# Superlite Exploded



# Superlite Parts

1	<a href="#">Center Section Nose Bearing Magnesium</a>	QC0014MN
2	Left Side Bell 8 Rib	QC0253ML
2A	Left Side Bell 6 Rib	QC0254M
	Left Side Bell 6 Rib (coated)	QC0254MC
3	Right Side Bell 8 Rib	QC0253MR
3A	Right Side Bell 6 Rib	QC0255M
	Right Side Bell 6 Rib (coated)	QC0255MC
4	Superlite Rear Cover	QC0840M
5	Seal O-Ring S/L and Frankland III	QC0275
6	Bearing Pinion Nose Bearing	QC0160
7	Pinion Bearing	QC0200
8	Pinion Bearing Carrier	QC0203
9	Pinion Nut L.H. Spread Bearing Posi Lock	QC0214A
10	Pinion Lock Plate Bolt	QC0108
11	3/8 Lock Washer	QC0100
12	Pinion Lock Plate Steel	QC0060
13	Thrust Block and Pin	QC0310
14	4:86 R&P Original	QC0182L
15	Yoke	QC0380
16	Yoke Bolt & Washer	QC0381
17	Front Yoke Seal	QC0150
18	Front Seal Plate	QC0140
19	3/8 x 16 x 1 1/4 Bolt Aluminum	QC0109A
20	Lower Shaft - PreHardened	QC04005PH
21	Sprint Input Shaft Bearing	SP0017
22	Sprint Output Shaft Bearing	SP0018
23	Carrier Bearing	QC0290
24	Carrier Bearing Race	QC0280
25	Rear Cover Bearing	QC0090
26	Rear Cover Stud	QC0121
27	Rear Cover Nut	QC0122
28	Rear Cover Bearing Lock Screw	QC0117
29	Rear Cover Gasket	QC0815
30	Pipe Plug 3/8 Aluminum	QC0321-A
31	Axle Tube Seal	QC0300
32	Spool	QC0432
33	Shim Kit	KT0445
34	Ring Gear Bolt	QC0307
35	Ring Gear Nut	QC0103
36	Through Bolt	QC0306
37	7/16 Washer	QC0302
38	7/16 Nut	QC0306
39	7/16 x 14 x 1 1/4" Bolt	QC0305