
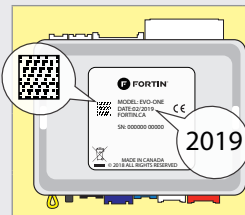


REGULAR & THAR-ONE-TOY12 INSTALLATION

ADDENDUM - SUGGESTED WIRING CONFIGURATION

			Vehicle functions supported in this diagram (functional if equipped)															
VEHICLE	YEARS		Immobilizer bypass	Lock	Unlock	Arm	Disarm	Parking Lights	Trunk (open)	Tachometer	Autolight Off	Door Status	Trunk Status	Hand-Brake Status	Foot-Brake Status	Hood Status*	OEM remote Monitoring	R.S. OEM remote Stand Alone compatible
																		
TOYOTA																		
Camry	H-Key	2018-2020	•	•	•	•	•	•	•	•	•	•	•	•	•	•	•	•



COMPATIBLE MODULE REQUIRED:


QR CODE ON THE LABEL MANUFACTURED AFTER: 2019


FIRMWARE VERSION

88.[15]

MINIMUM

To add the firmware version and the options, use the **FLASH LINK UPDATER** or **FLASH LINK MOBILE** tool, sold separately.

	Program bypass option IF THE VEHICLE IS NOT EQUIPPED WITH FUNCTIONAL HOOD PIN:	UNIT OPTION		DESCRIPTION
		A11	OFF	Hood trigger (Output Status). Contact de capot (état de sortie).
		C1		OEM Remote status (Lock/Unlock) monitoring
	Program bypass option (If equipped with OEM alarm):	D2		Unlock before / Lock after (Disarm OEM alarm)

	Program remote starter option:	FUNCTION	MODE	DESCRIPTION
		32	3	DK.Blue (GWR) Shut Down After
	Program remote starter option for R.S. OEM REMOTE STAND ALONE: P	38	2	Enable Press 3x Lock to remote start with the OEM remote.

MANDATORY INSTALL I

* HOOD PIN



HOOD STATUS: THE HOOD PIN SWITCH (INCLUDED) MUST BE INSTALLED IF THE VEHICLE CAN BE REMOTE STARTED WITH THE HOOD OPEN, SET FUNCTION A11 TO OFF.

A11

OFF

NON

SECURITY STICKER

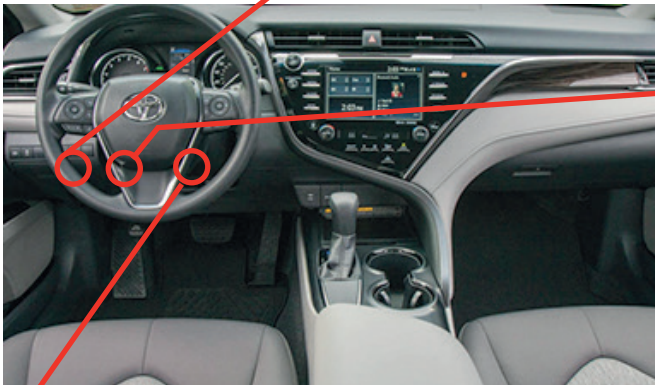
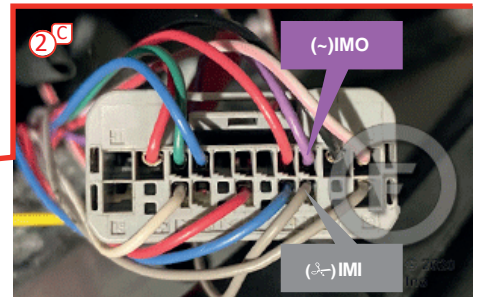
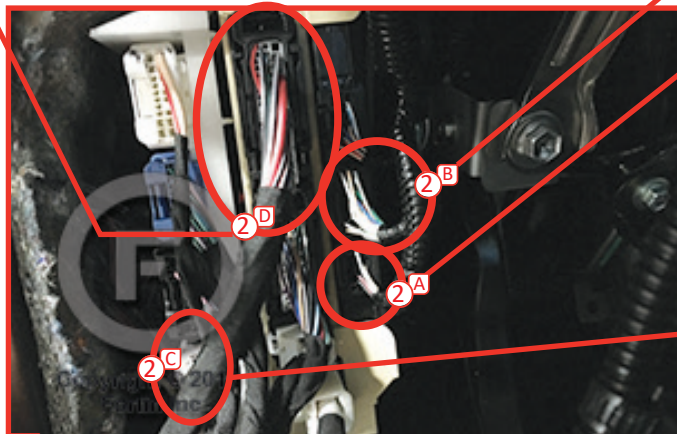
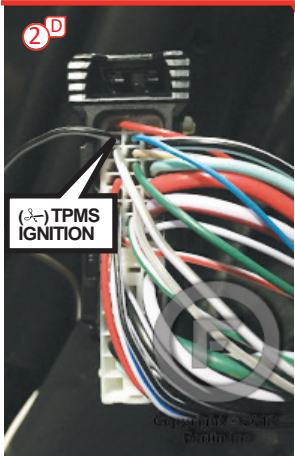
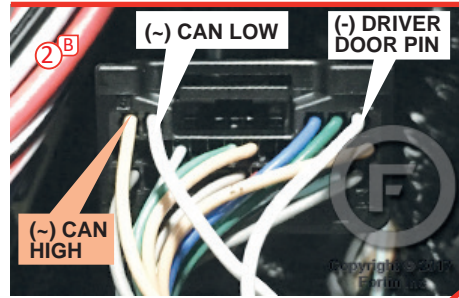


Included

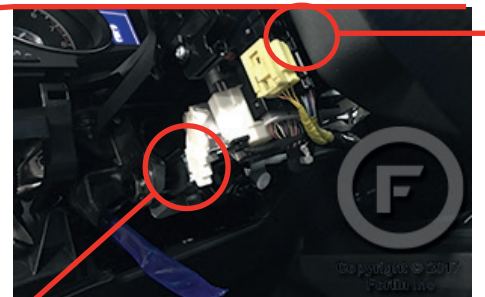
Notice: the installation of safety elements are mandatory. The hood pin and the sticker are essential security elements and must be installed.

THIS MODULE MUST BE INSTALLED BY A QUALIFIED TECHNICIAN. A WRONG CONNECTION CAN CAUSE PERMANENT DAMAGE TO THE VEHICLE.

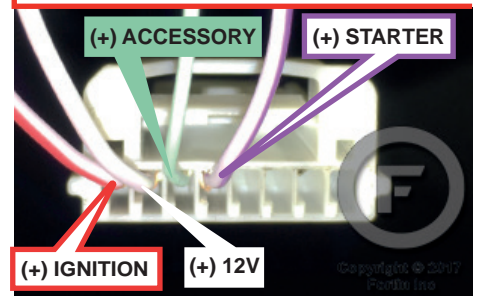
DESCRIPTION



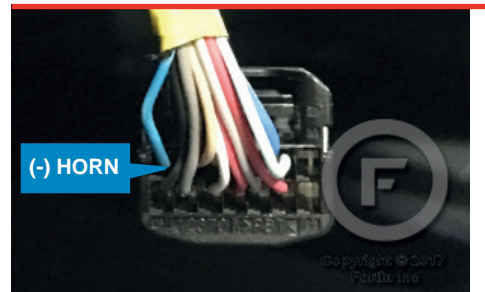
① ③ At Steering Column



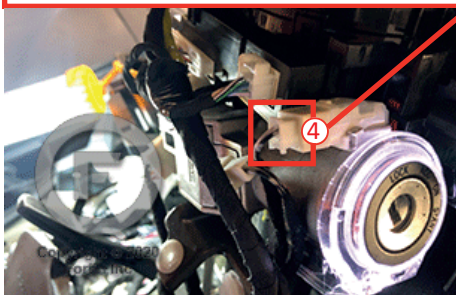
① At Ignition Switch



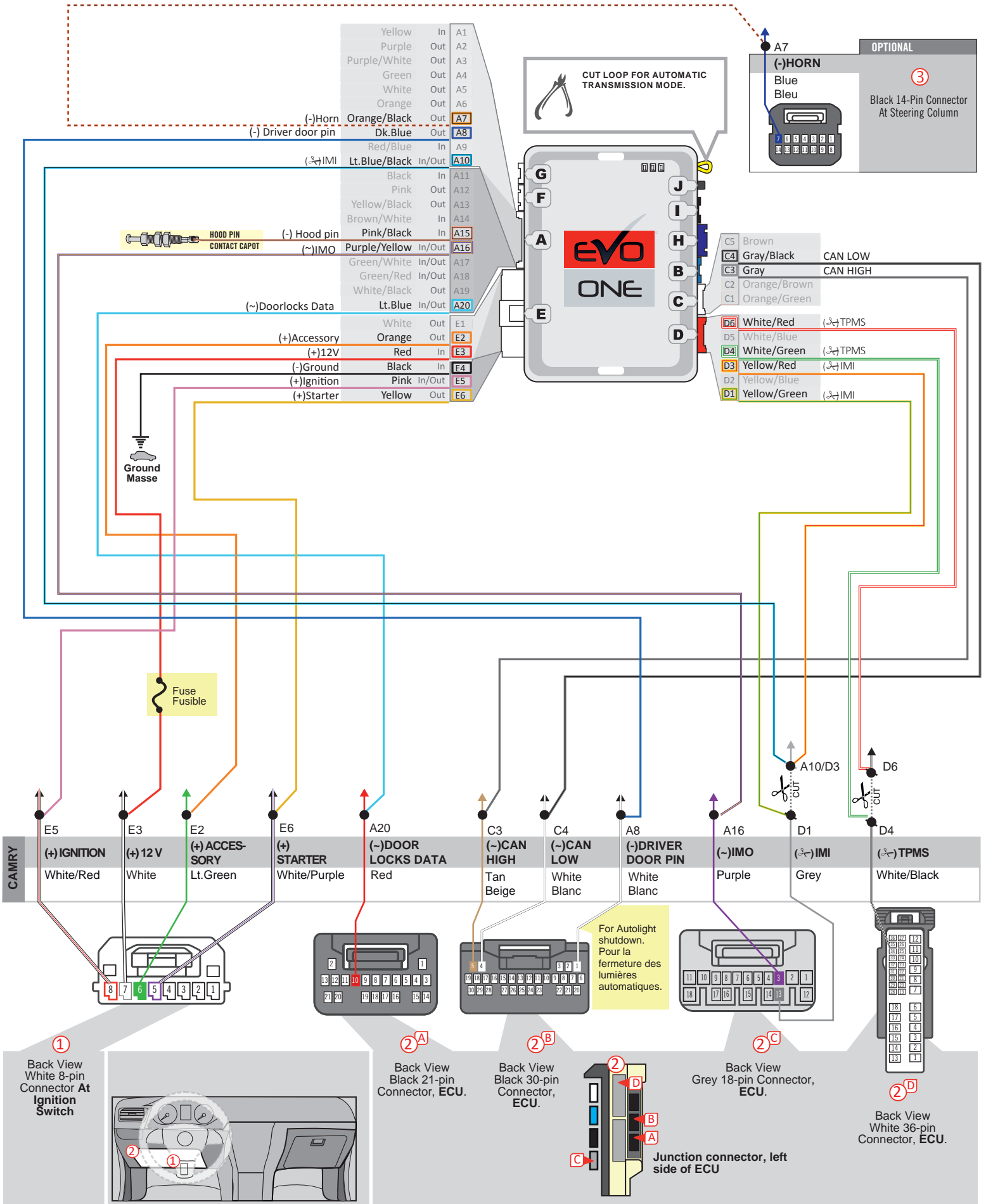
③ At Steering Column



④ Close to key barrel.



WIRING CONNECTION |



DCRYPTOR PROGRAMMING PROCEDURE |



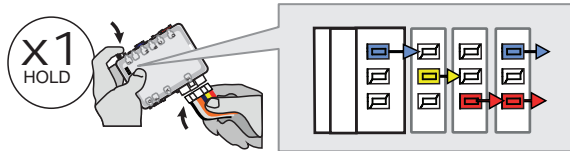
- Parts required (not included)**
- 1x **FLASH LINK UPDATER,**
 - 1x **FLASH LINK MANAGER**
SOFTWARE
 - 1x Microsoft Windows Computer with Internet connection

OR

- 1x **FLASH LINK MOBILE**
- 1x **FLASH LINK MOBILE APP**
- 1x Smartphone *Android or iOS* with Internet connection
(Internet provider charges may apply)

BEFORE PROGRAMMING SET THE UNIT OPTIONS AND SAVE.

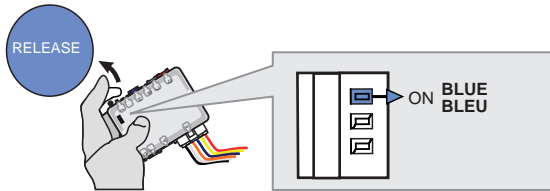
1



Press and hold the programming button:
Connect the 6-PIN Main harness (White connector).

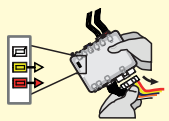
↳ *The LEDs will alternate between BLUE, RED, YELLOW & BLUE/RED flashes.*

2

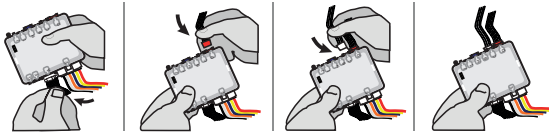


Release the programming button when the LED is BLUE.

If the BLUE LED is not ON solid disconnect the 6-Pin Main connector and go back to step 1.

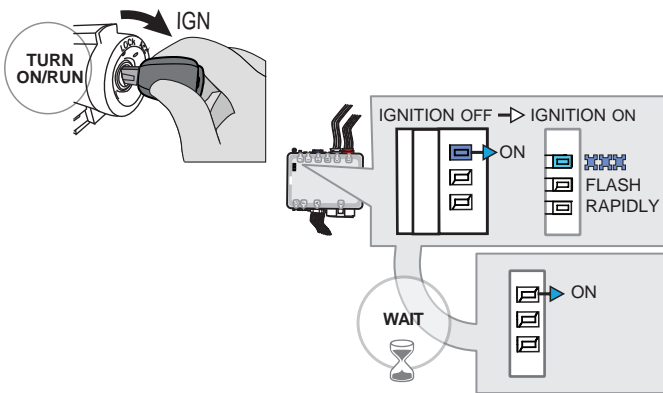


3



Insert the required remaining connectors.

4



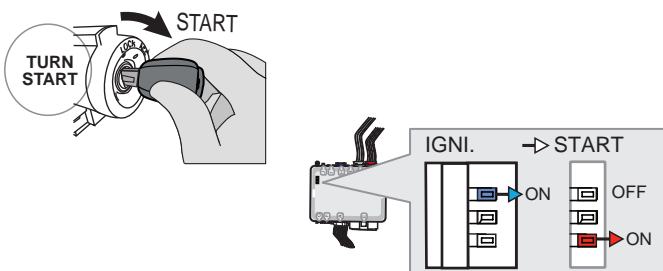
Turn the key to the Ignition ON/RUN position.

↳ *The BLUE LED will flash rapidly.*

Wait,

↳ *The BLUE LED will turn ON solide.*

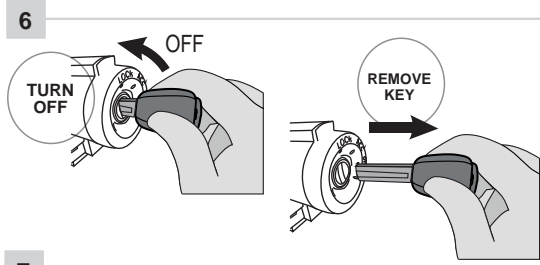
5



Start the vehicle.

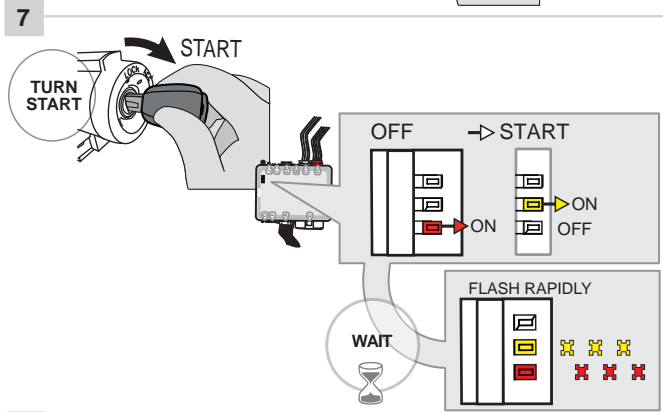
↳ *The BLUE LED will turn OFF.*
↳ *The RED LED will turn ON.*

KEY BYPASS PROGRAMMING PROCEDURE 2/2 |



Turn the key to the OFF position.

Remove the key from the ignition switch.

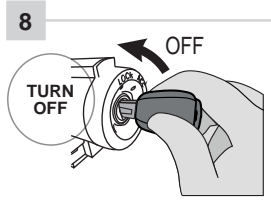


Start the vehicle.

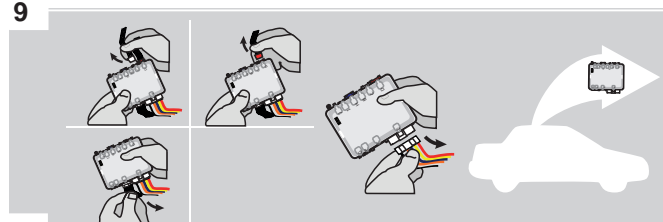
- ↳ The RED LED will turn OFF.
- ↳ The YELLOW LED will turn ON.

Wait,

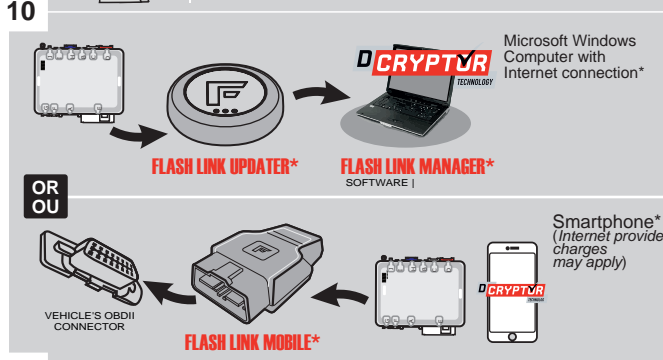
- ↳ The RED and YELLOW LEDs will alternate.



Turn the key to the OFF position.

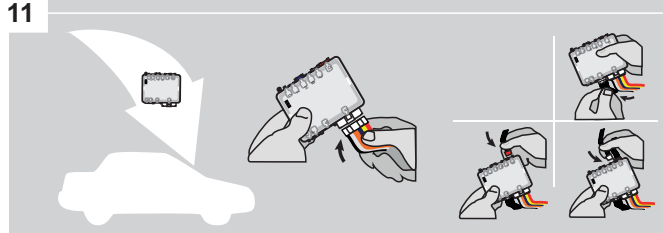


Disconnect all connectors and after the 6-Pin (Main-Harness) or the 4-Pin Data-link connector.



Use the tool: **FLASH LINK UPDATER** or **FLASH LINK MOBILE** to visit the DCryptor menu.

*Parts required (not included)



AFTER DCRYPTOR PROGRAMMING COMPLETED Go back to the vehicle and **reconnect** the 6-Pin (Main-Harness) or the 4-pins (Data-Link) connector and after all the remaining connector.



The module is now programmed.



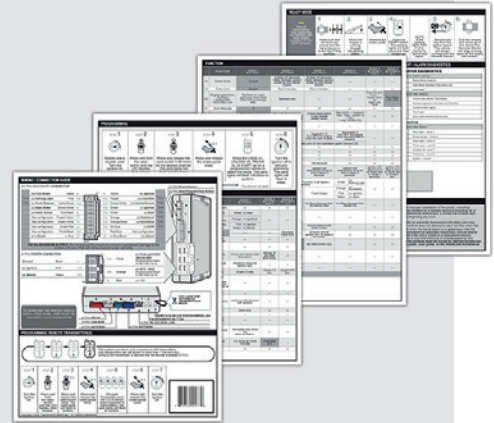
REMOTE STARTER / ALARM VERIFICATION PROCEDURE |

Test the remote starter. Remote start the vehicle.

REMOTE STARTER PROGRAMMING PROCEDURE |



REFER TO THE **QUICK INSTALL GUIDE** INCLUDED WITH THE MODULE FOR THE REMOTE STARTER PROGRAMMING.



REMOTE STARTER FUNCTIONALITY |



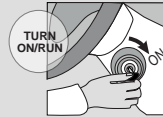
All doors must be closed.



Remote start the vehicle.



Unlock the doors with the remote-starter remote or the OEM remote.



Insert and Turn the key to the Ignition ON/RUN position.




Press the brake pedal.

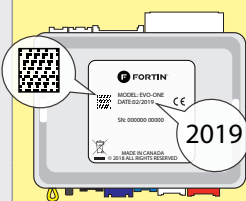


The vehicle can now be put in to gear and driven.

REGULAR & THAR-ONE-TOY12 INSTALLATION

ADDENDUM - SUGGESTED WIRING CONFIGURATION

VEHICLE	YEARS	Vehicle functions supported in this diagram (functional if equipped)															
		Immobilizer bypass	Lock	Unlock	Arm	Disarm	Parking Lights	Trunk (open)	Tachometer	Autolight Off	Door Status	Trunk Status	Hand-Brake Status	Foot-Brake Status	Hood Status*	OEM remote Monitoring	R.S. OEM remote Stand Alone compatible
	H-Key	2020-2021	•	•	•	•	•	•	•	•	•	•	•	•	•	•	•



COMPATIBLE MODULE REQUIRED:


QR CODE ON THE LABEL MANUFACTURED AFTER: 2019


FIRMWARE VERSION

88.[15]

MINIMUM

To add the firmware version and the options, use the **FLASH LINK UPDATER** or **FLASH LINK MOBILE** tool, sold separately.

	Program bypass option IF THE VEHICLE IS NOT EQUIPPED WITH FUNCTIONAL HOOD PIN:	UNIT OPTION		DESCRIPTION
		A11	OFF	
				Hood trigger (Output Status).
		C1		OEM Remote status (Lock/Unlock) monitoring
	Program bypass option (If equipped with OEM alarm):	D2		Unlock before / Lock after (Disarm OEM alarm)

	Program remote starter option:	FUNCTION	MODE	DESCRIPTION
			32	3
	Program remote starter option for R.S. OEM REMOTE STAND ALONE:	38	2	Enable Press 3x Lock to remote start with the OEM remote.

MANDATORY INSTALL

*** HOOD PIN**



HOOD STATUS : THE HOOD PIN SWITCH (INCLUDED) MUST BE INSTALLED IF THE VEHICLE CAN BE REMOTE STARTED WITH THE HOOD OPEN, SET FUNCTION **A11** TO OFF.

SECURITY STICKER



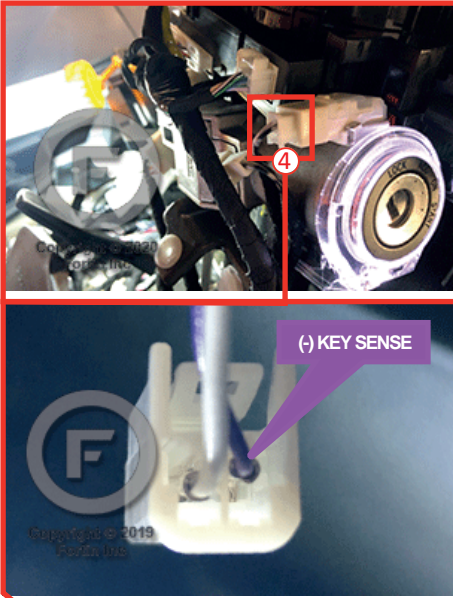
Included

Notice: the installation of safety elements are mandatory. The hood pin and the sticker are essential security elements and must be installed.

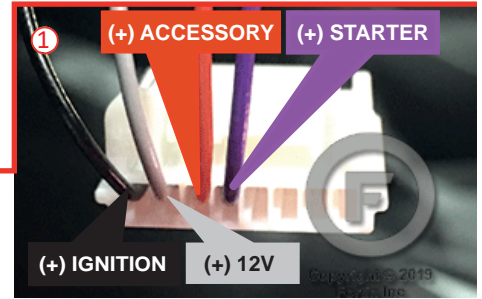
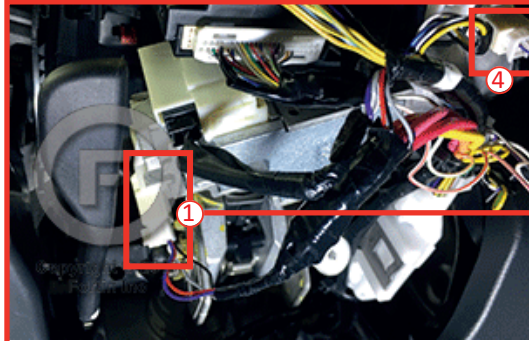
THIS MODULE MUST BE INSTALLED BY A QUALIFIED TECHNICIAN. A WRONG CONNECTION CAN CAUSE PERMANENT DAMAGE TO THE VEHICLE.

DESCRIPTION | DESCRIPTION

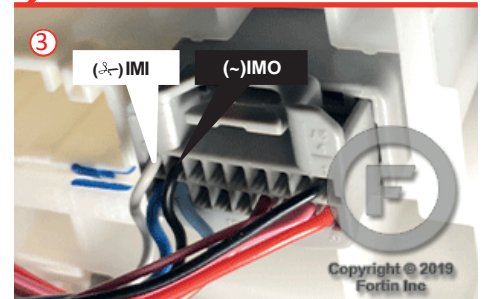
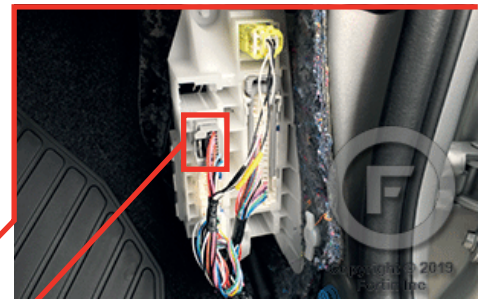
④ Close to key barrel.



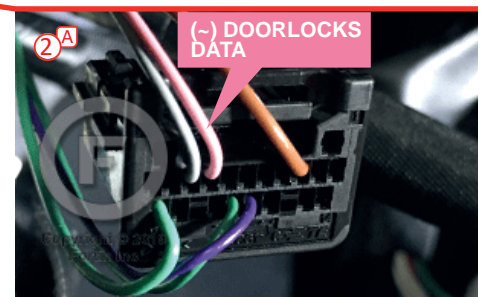
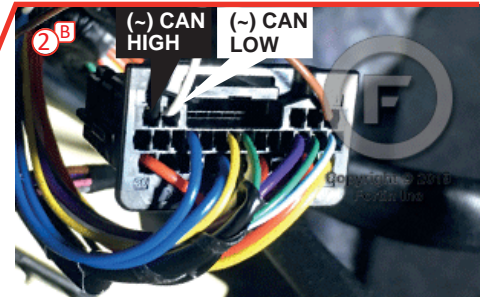
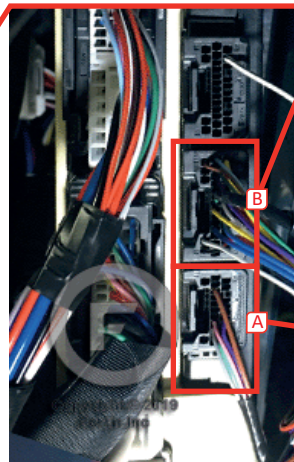
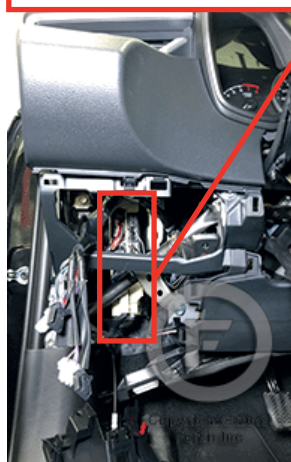
① At Steering Column



③ Passenger kick panel

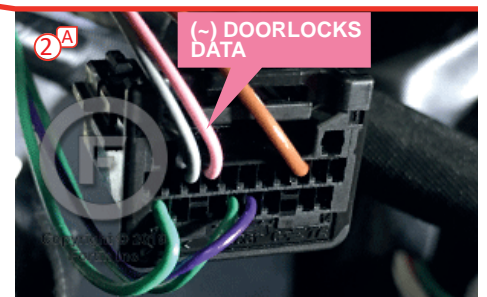
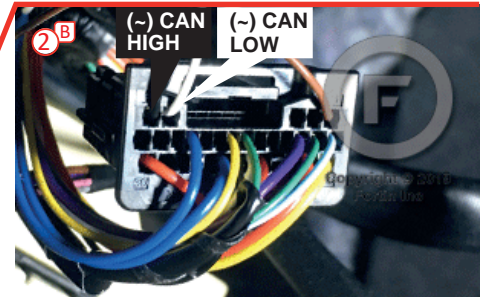
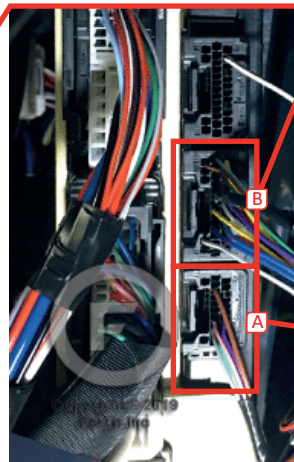
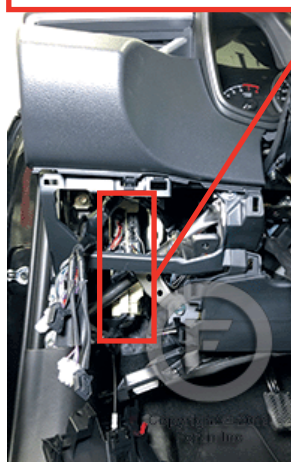


② ECU, Driver's

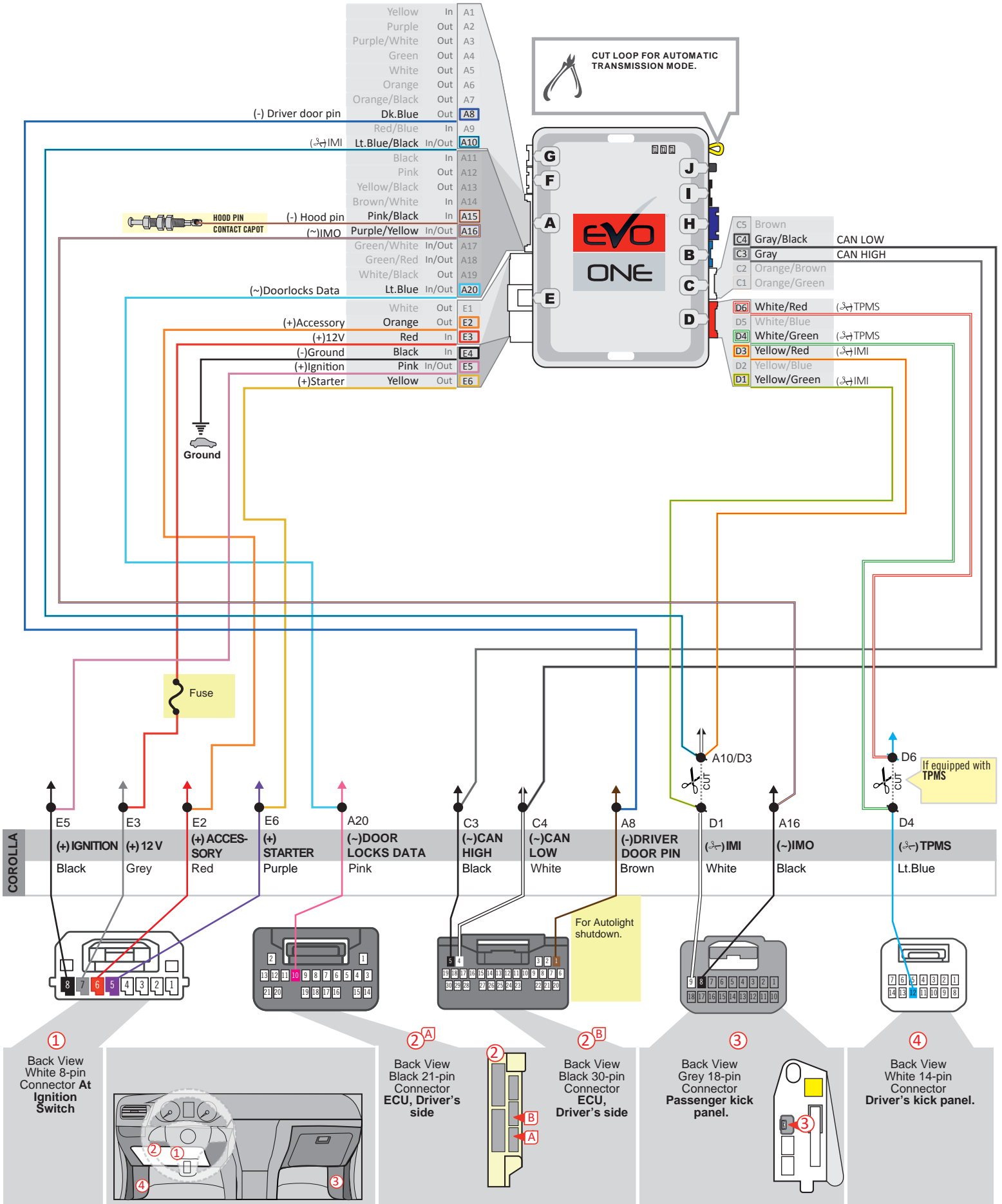


(-) TPMS

CONNECTION ONLY REQUIRED IF REMOTE START CONTROL FROM OEM REMOTES IS DESIRED AND VEHICLE IS EQUIPPED WITH TIRE PRESSURE MONITORING SYSTEM (TPMS).



WIRING CONNECTION



DCRYPTOR PROGRAMMING PROCEDURE



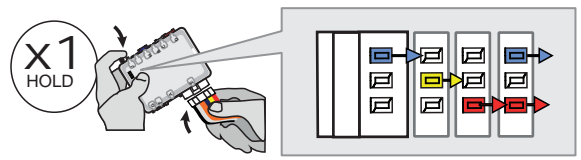
- Parts required (not included)**
- 1x **FLASH LINK UPDATER,**
FLASH LINK MANAGER
SOFTWARE | PROGRAMME
 - 1x **Microsoft Windows Computer with Internet connection**

OR
OU

- 1x **FLASH LINK MOBILE**
- 1x **FLASH LINK MOBILE APP**
- 1x **Smartphone Android or iOS with Internet connection**
(Internet provider charges may apply)

BEFORE PROGRAMMING SET THE UNIT OPTIONS AND SAVE.

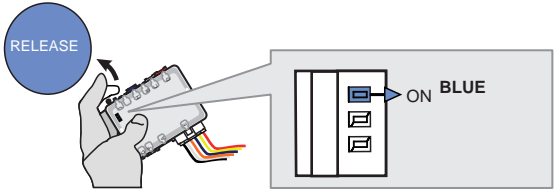
1



Press and hold the programming button:
Connect the 6-PIN Main harness (White connector).

↳ *The LEDs will alternate between BLUE, RED, YELLOW & BLUE/RED flashes.*

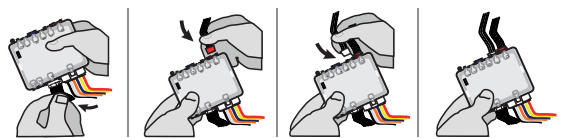
2



Release the programming button when the LED is BLUE.

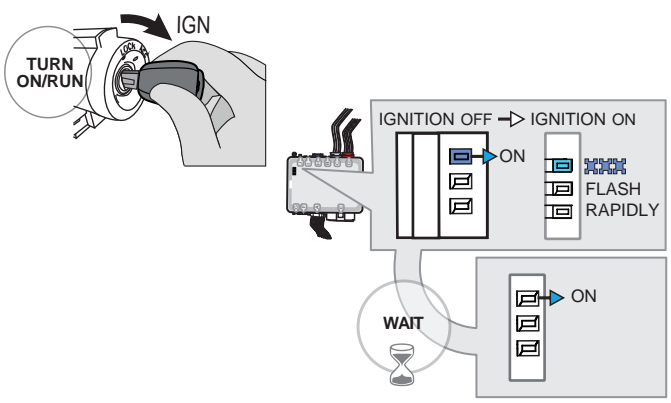
If the BLUE LED is not ON solid disconnect the 6-Pin Main connector and go back to step 1.

3



Insert the required remaining connectors.

4



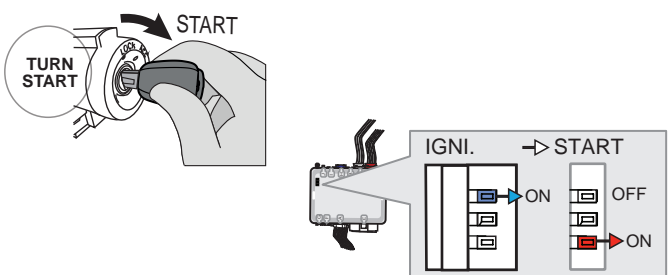
Turn the key to the Ignition ON/RUN position.

↳ *The BLUE LED will flash rapidly.*

Wait,

↳ *The BLUE LED will turn ON solide.*

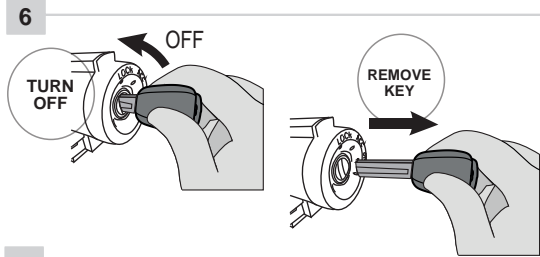
5



Start the vehicle.

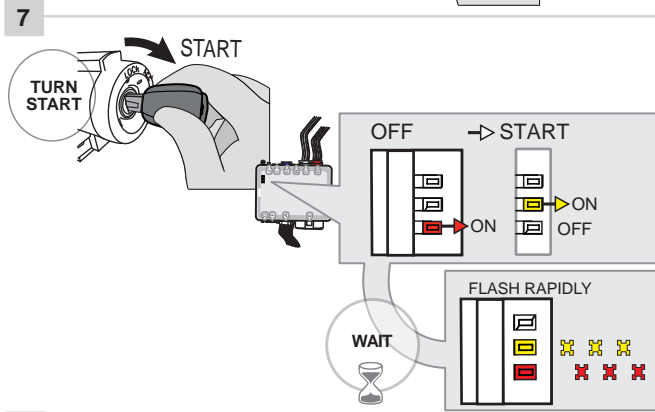
↳ *The BLUE LED will turn OFF.*
↳ *The RED LED will turn ON.*

KEY BYPASS PROGRAMMING PROCEDURE 2/2



Turn the key to the OFF position.

Remove the key from the ignition switch.

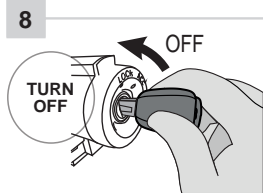


Start the vehicle.

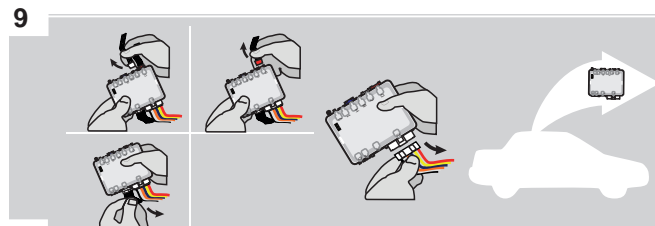
- ↳ The RED LED will turn OFF.
- ↳ The YELLOW LED will turn ON.

Wait,

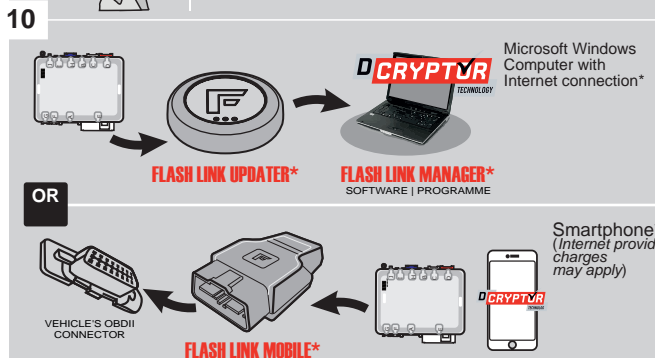
- ↳ The RED and YELLOW LEDs will alternate.



Turn the key to the OFF position.

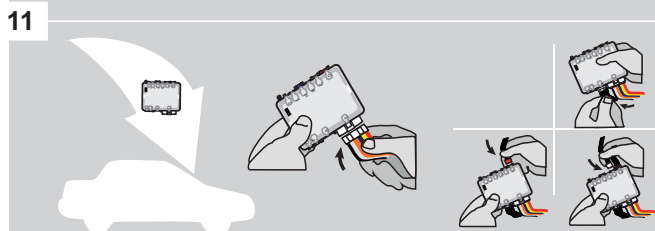


Disconnect all connectors and after the 6-Pin (Main-Harness) or the 4-Pin Data-link connector.



Use the tool: **FLASH LINK UPDATER** or **FLASH LINK MOBILE** to visit the DCryptor menu.

*Parts required (not included)



AFTER DCRYPTOR PROGRAMMING COMPLETED Go back to the vehicle and **reconnect** the 6-Pin (Main-Harness) or the 4-pins (Data-Link) connector and after all the remaining connector.



The module is now programmed.



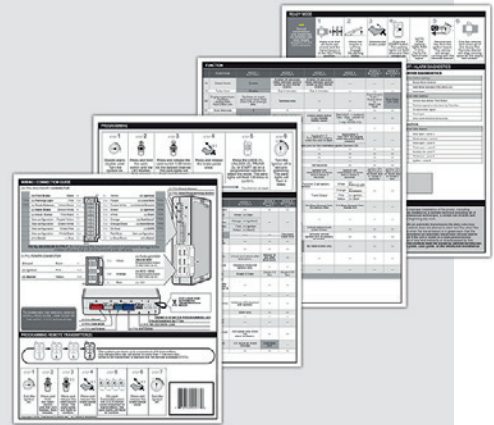
REMOTE STARTER / ALARM VERIFICATION PROCEDURE

Test the remote starter. Remote start the vehicle.

REMOTE STARTER PROGRAMMING PROCEDURE



REFER TO THE **QUICK INSTALL GUIDE** INCLUDED WITH THE MODULE FOR THE REMOTE STARTER PROGRAMMING.



REMOTE STARTER FUNCTIONALITY



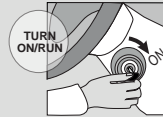
All doors must be closed.



Remote start the vehicle.



Unlock the doors with the remote-starter remote or the OEM remote.



Insert and Turn the key to the Ignition ON/RUN position.




Press the brake pedal.

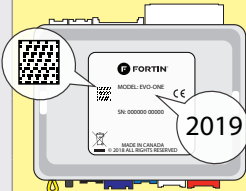


The vehicle can now be put in to gear and driven.

REGULAR & THAR-ONE-TOY12 INSTALLATION & THAR-ONE-TOY12

ADDENDUM - SUGGESTED WIRING CONFIGURATION

VEHICLE	YEARS	Vehicle functions supported in this diagram (functional if equipped)																
		Immobilizer bypass	Lock	Unlock	Arm	Disarm	Parking Lights	Trunk (open)	Tachometer	Autolight Off	Door Status	Trunk Status	Hand-Brake Status	Foot-Brake Status	Hood Status*	OEM remote Monitoring	R.S. OEM remote Stand Alone compatible	
																		
TOYOTA																		
RAV4	H-Key	2019-2021	•	•	•	•	•	•	•	•	•	•	•	•	•	•	•	•



COMPATIBLE MODULE REQUIRED:

QR CODE ON THE LABEL
MANUFACTURED AFTER: **2019**

FIRMWARE VERSION

88.[15]

MINIMUM


To add the firmware version and the options, use the **FLASH LINK UPDATER** or **FLASH LINK MOBILE** tool, sold separately.

	Program bypass option IF THE VEHICLE IS NOT EQUIPPED WITH FUNCTIONAL HOOD PIN:	UNIT OPTION		DESCRIPTION
		A11	OFF	
				Hood trigger (Output Status).
			C1	OEM Remote status (Lock/Unlock) monitoring
	Program bypass option (If equipped with OEM alarm):		D2	Unlock before / Lock after (Disarm OEM alarm)

	Program remote starter option:	FUNCTION	MODE	DESCRIPTION
		32	3	DK.Blue (GWR) Shut Down After
Program remote starter option for R.S. OEM REMOTE STAND ALONE:	38	2	Enable Press 3x Lock to remote start with the OEM remote.	

MANDATORY INSTALL


* HOOD PIN



HOOD STATUS: THE HOOD PIN SWITCH (INCLUDED) MUST BE INSTALLED IF THE VEHICLE CAN BE REMOTE STARTED WITH THE HOOD OPEN, SET FUNCTION A11 TO OFF.

A11 OFF

SECURITY STICKER



Included

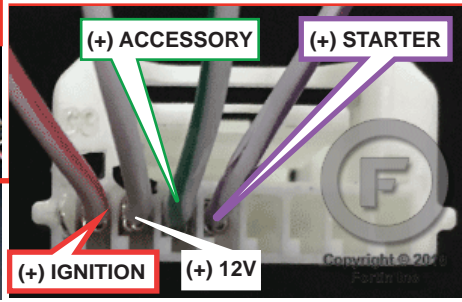
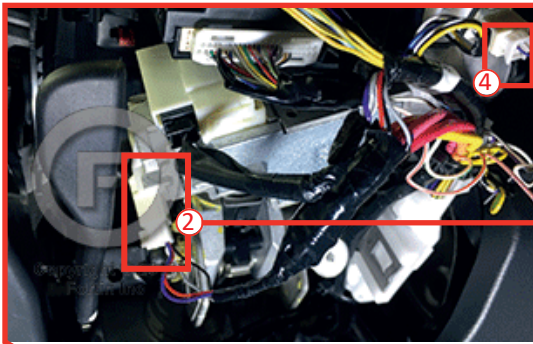
Notice: the installation of safety elements are mandatory. The hood pin and the sticker are essential security elements and must be installed.

Notice: l'installation des éléments de sécurité est obligatoire. Le contact de capot et l'autocollant de sécurité sont des éléments de sécurité essentiels et doivent absolument être installés.

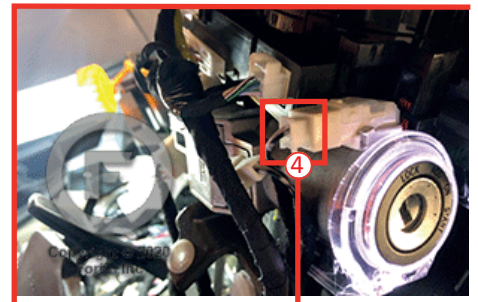
THIS MODULE MUST BE INSTALLED BY A QUALIFIED TECHNICIAN. A WRONG CONNECTION CAN CAUSE PERMANENT DAMAGE TO THE VEHICLE.

DESCRIPTION

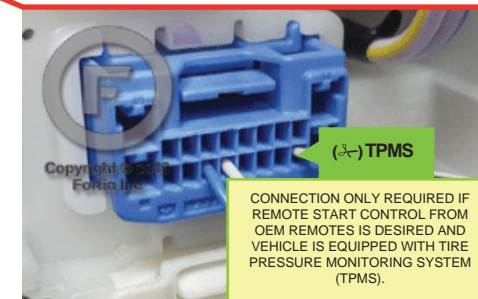
① At Steering Column



④ Close to key barrel.

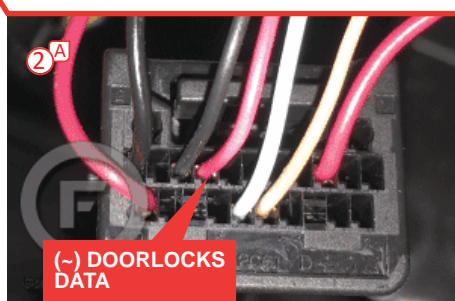
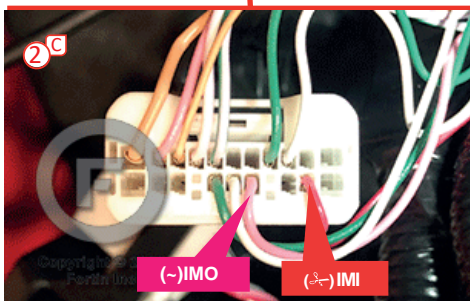
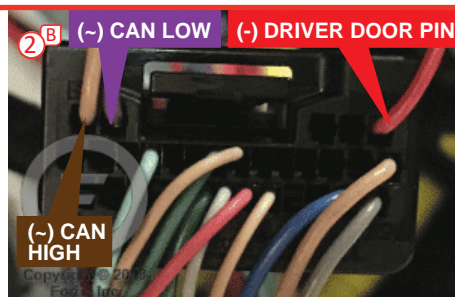
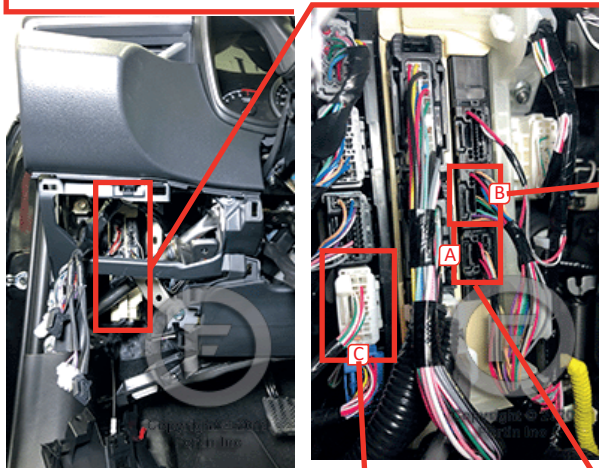


③ Passenger kick panel, junction connector.

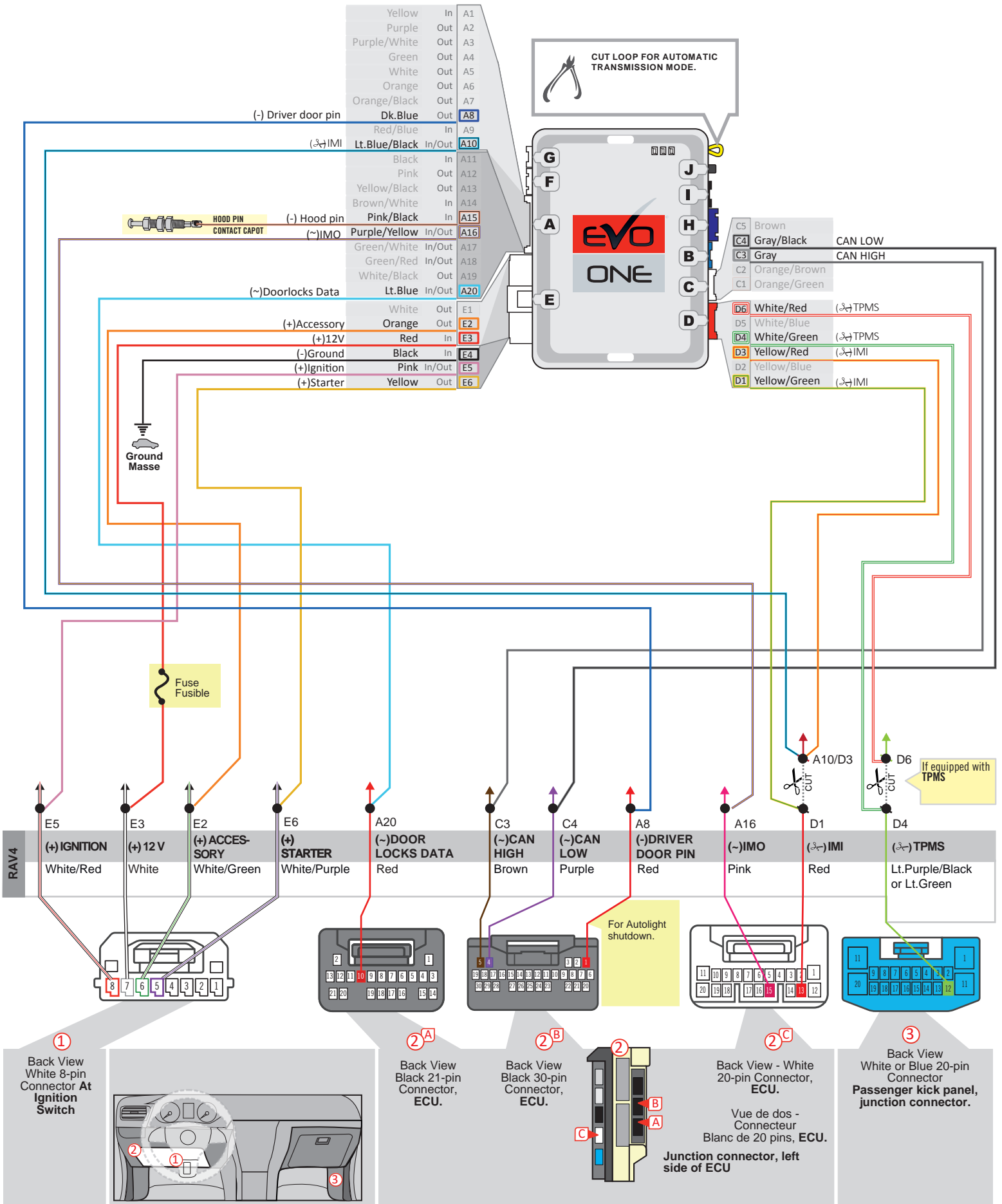


CONNECTION ONLY REQUIRED IF REMOTE START CONTROL FROM OEM REMOTES IS DESIRED AND VEHICLE IS EQUIPPED WITH TIRE PRESSURE MONITORING SYSTEM (TPMS).

② Junction connector, left side of ECU



WIRING CONNECTION



DCRYPTOR PROGRAMMING PROCEDURE



Parts required (not included)

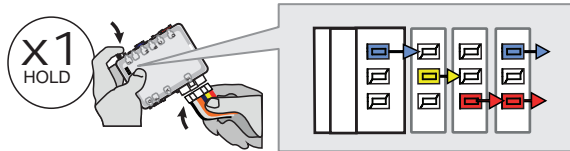
- 1x **FLASH LINK UPDATER,**
- 1x **FLASH LINK MANAGER**
SOFTWARE
- 1x Microsoft Windows Computer with Internet connection

OR
OU

- 1x **FLASH LINK MOBILE**
- 1x **FLASH LINK MOBILE APP**
- 1x Smartphone *Android or iOS* with Internet connection
(Internet provider charges may apply)

BEFORE PROGRAMMING SET THE UNIT OPTIONS AND SAVE.

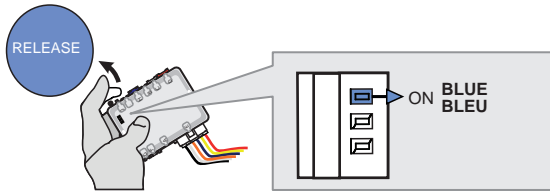
1



Press and hold the programming button:
Connect the 6-PIN Main harness (White connector).

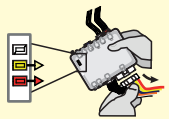
↳ The LEDs will alternate between BLUE, RED, YELLOW & BLUE/RED flashes.

2

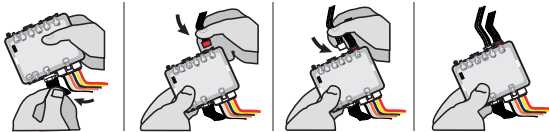


Release the programming button when the LED is BLUE.

If the BLUE LED is not ON solid disconnect the 6-Pin Main connector and go back to step 1.

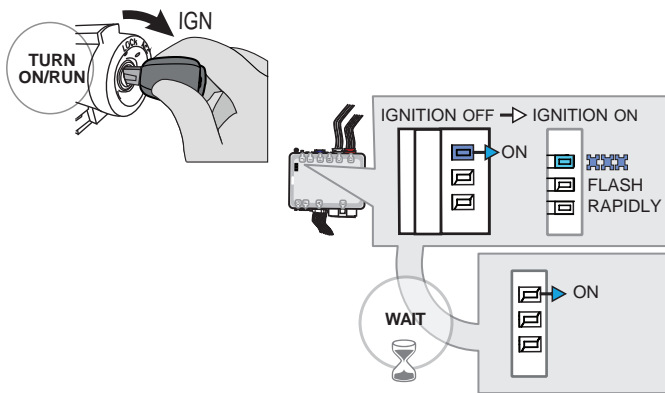


3



Insert the required remaining connectors.

4



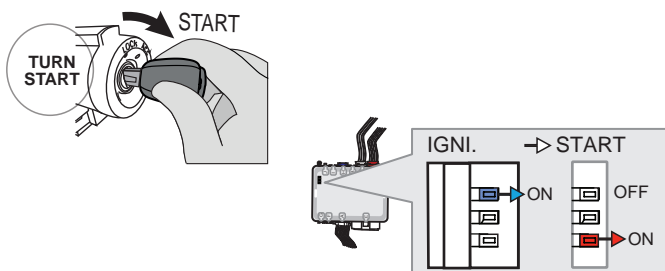
Turn the key to the Ignition ON/RUN position.

↳ The BLUE LED will flash rapidly.

Wait,

↳ The BLUE LED will turn ON solide.

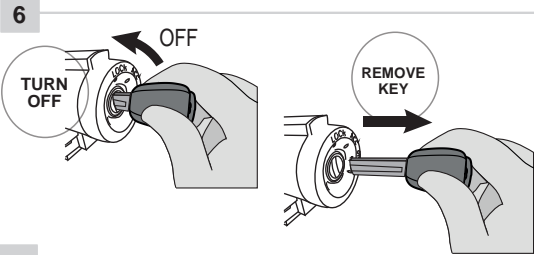
5



Start the vehicle.

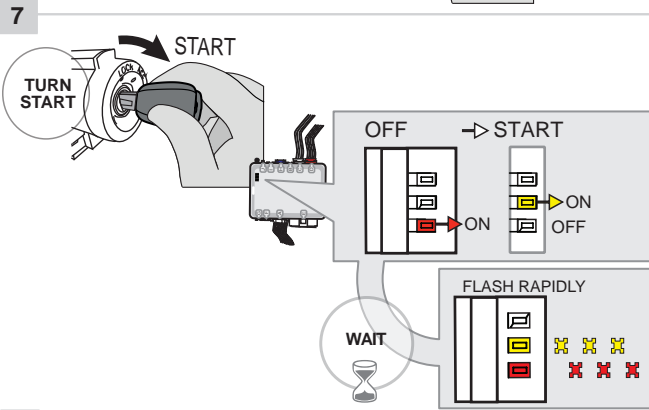
↳ The BLUE LED will turn OFF.
↳ The RED LED will turn ON.

KEY BYPASS PROGRAMMING PROCEDURE 2/2



Turn the key to the OFF position.

Remove the key from the ignition switch.

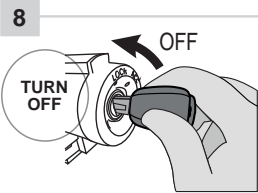


Start the vehicle.

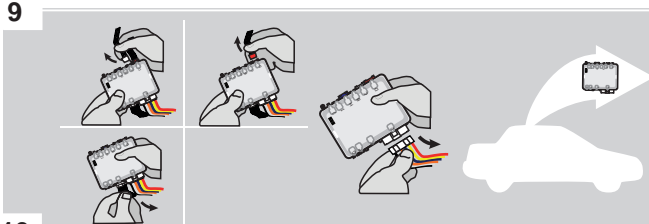
- ↳ The RED LED will turn OFF.
- ↳ The YELLOW LED will turn ON.

Wait,

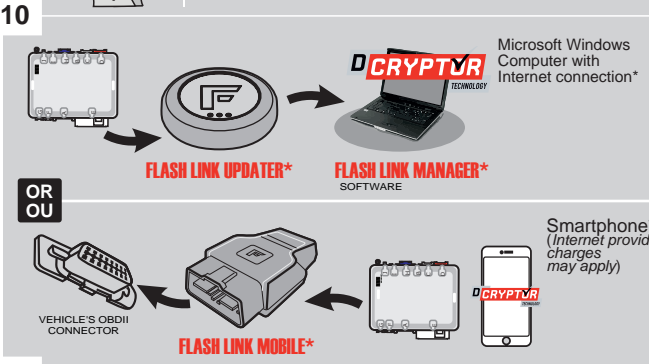
- ↳ The RED and YELLOW LEDs will alternate.



Turn the key to the OFF position.

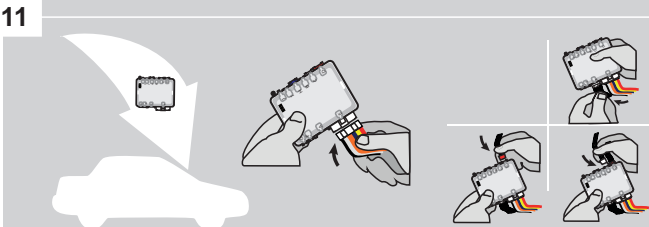


Disconnect all connectors and after the 6-Pin (Main-Harness) or the 4-Pin Data-link connector.



Use the tool: FLASH LINK UPDATER or FLASH LINK MOBILE to visit the DCryptor menu.

*Parts required (not included)



AFTER DCRYPTOR PROGRAMMING COMPLETED Go back to the vehicle and reconnect the 6-Pin (Main-Harness) or the 4-pins (Data-Link) connector and after all the remaining connector.



The module is now programmed.



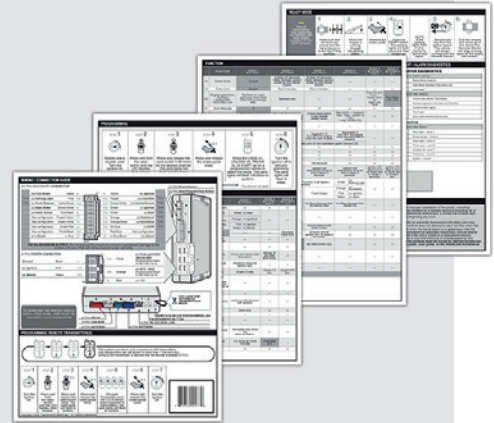
REMOTE STARTER / ALARM VERIFICATION PROCEDURE

Test the remote starter. Remote start the vehicle.

REMOTE STARTER PROGRAMMING PROCEDURE



REFER TO THE **QUICK INSTALL GUIDE** INCLUDED WITH THE MODULE FOR THE REMOTE STARTER PROGRAMMING.



REMOTE STARTER FUNCTIONALITY



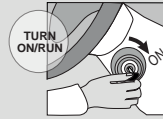
All doors must be closed.



Remote start the vehicle.



Unlock the doors with the remote-starter remote or the OEM remote.



Insert and Turn the key to the Ignition ON/RUN position.



Press the brake pedal.

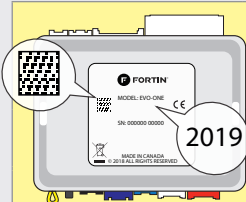


The vehicle can now be put in to gear and driven.

REGULAR & THAR-ONE-TOY12 INSTALLATION

ADDENDUM - SUGGESTED WIRING CONFIGURATION

VEHICLE	YEARS	Vehicle functions supported in this diagram (functional if equipped)																
		Immobilizer bypass	Lock	Unlock	Arm	Disarm	Parking Lights	Trunk (open)	Tachometer	Autolight Off	Door Status	Trunk Status	Hand-Brake Status	Foot-Brake Status	Hood Status*	OEM remote Monitoring	R.S. OEM remote Stand Alone compatible	
TOYOTA																		
RAV4	Hybrid H-Key	2019-2021	•	•	•	•	•	•	•	•	•	•	•	•	•	•	•	•



COMPATIBLE MODULE REQUIRED:


QR CODE ON THE LABEL
MANUFACTURED AFTER: **2019**


FIRMWARE VERSION

88.[15]

MINIMUM

To add the firmware version and the options, use the **FLASH LINK UPDATER** or **FLASH LINK MOBILE** tool, sold separately.

 <p>Program bypass option IF THE VEHICLE IS NOT EQUIPPED WITH FUNCTIONAL HOOD PIN:</p>	UNIT OPTION	DESCRIPTION
	<p>Program bypass option (if equipped with OEM alarm):</p>	A11 <input type="checkbox"/> OFF
C1		OEM Remote status (Lock/Unlock) monitoring
D2		Unlock before / Lock after (Disarm OEM alarm)
Vehicle hybrid only	D4	Hybrid mode (Vehicle hybrid only)

 <p>Program remote starter option:</p>	FUNCTION	MODE	DESCRIPTION
	<p>Program remote starter option for R.S. OEM REMOTE STAND ALONE:</p>	32	3
38		2	Enable Press 3x Lock to remote start with the OEM remote.

MANDATORY INSTALL

*** HOOD PIN**



HOOD STATUS: THE HOOD PIN SWITCH (INCLUDED) MUST BE INSTALLED IF THE VEHICLE CAN BE REMOTE STARTED WITH THE HOOD OPEN, SET FUNCTION **A11** TO OFF.

Notice: the installation of safety elements are mandatory. The hood pin and the sticker are essential security elements and must be installed.

SECURITY STICKER

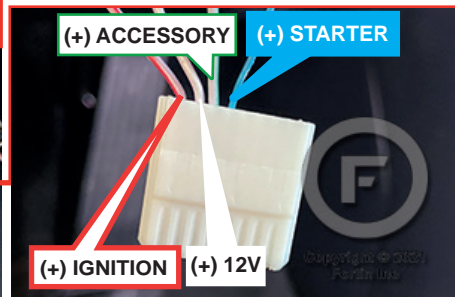
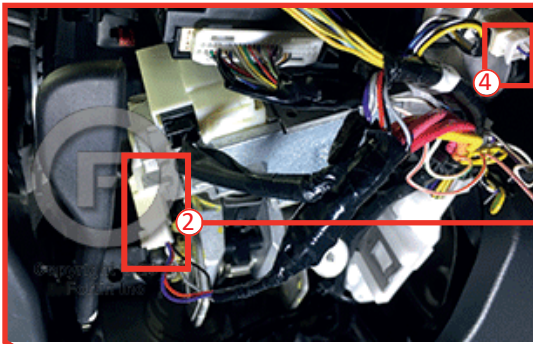


Included

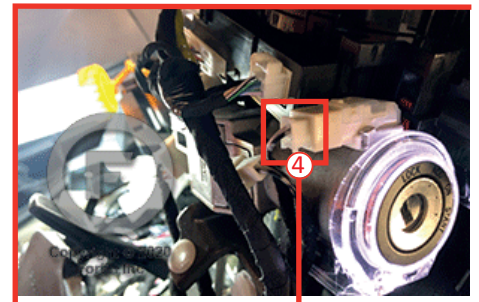
THIS MODULE MUST BE INSTALLED BY A QUALIFIED TECHNICIAN. A WRONG CONNECTION CAN CAUSE PERMANENT DAMAGE TO THE VEHICLE.

DESCRIPTION

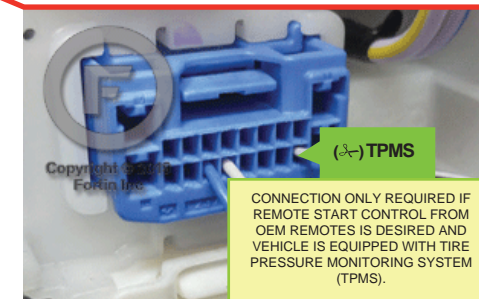
① At Steering Column



④ Close to key barrel.

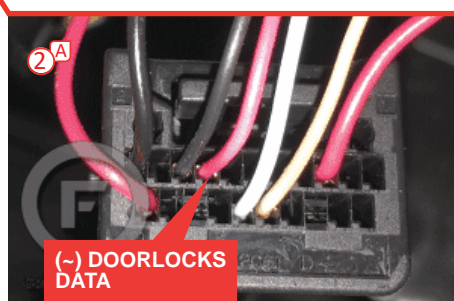
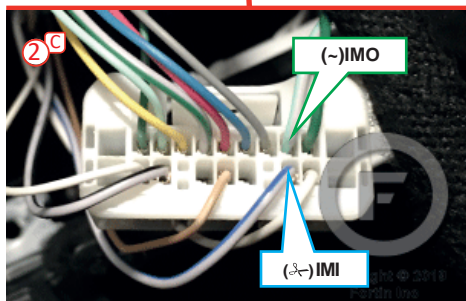
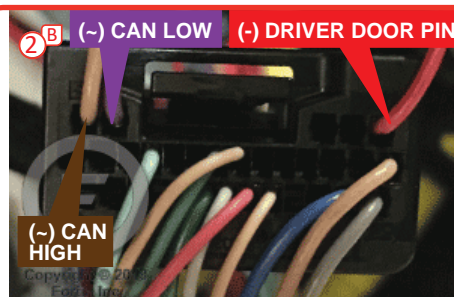
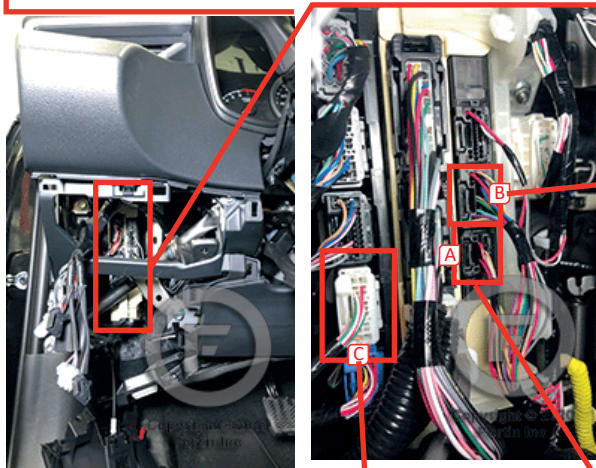


③ Passenger kick panel, junction connector.

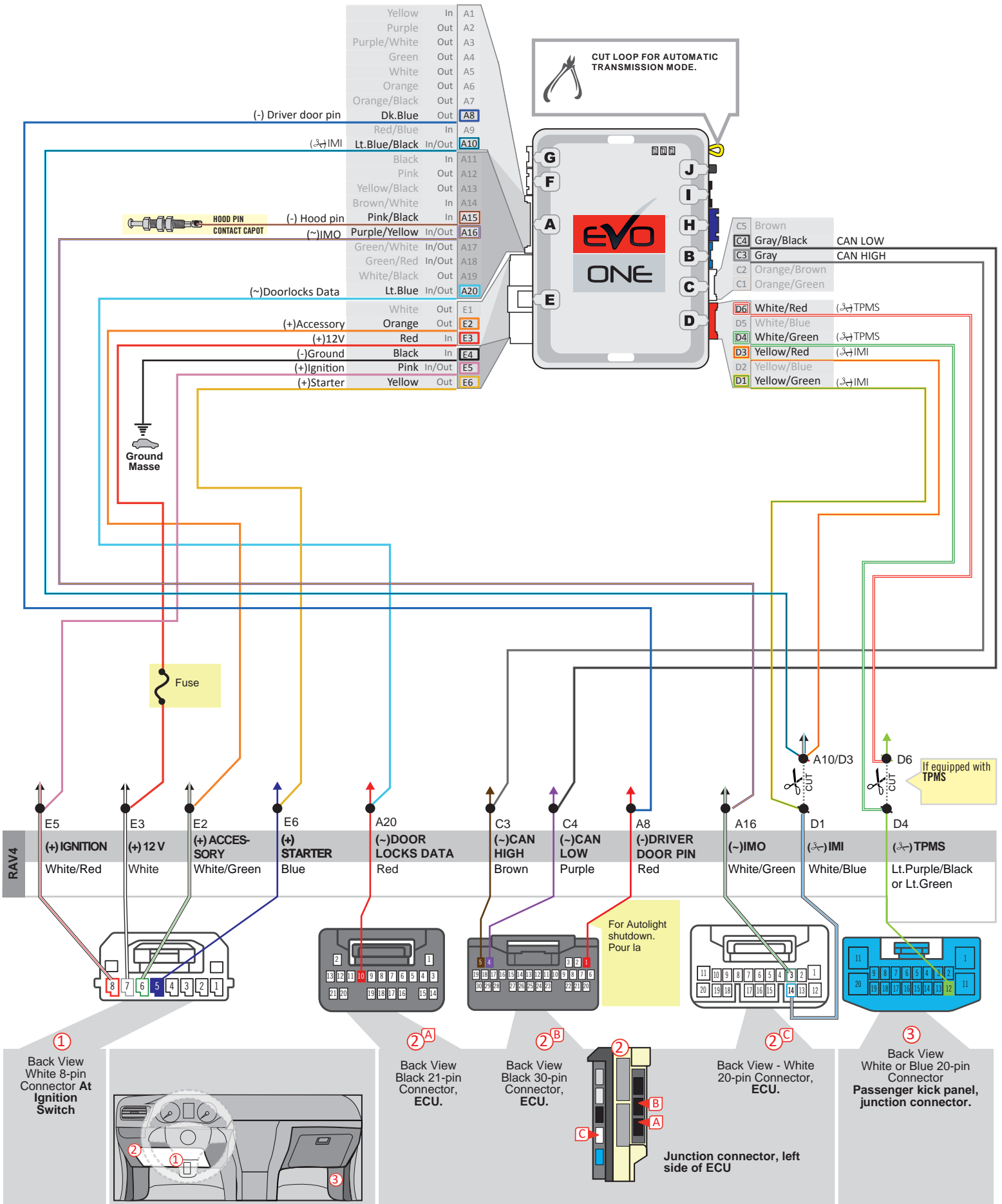


CONNECTION ONLY REQUIRED IF REMOTE START CONTROL FROM OEM REMOTES IS DESIRED AND VEHICLE IS EQUIPPED WITH TIRE PRESSURE MONITORING SYSTEM (TPMS).

② Junction connector, left side of ECU



WIRING CONNECTION



DCRYPTOR PROGRAMMING PROCEDURE



Parts required (not included)

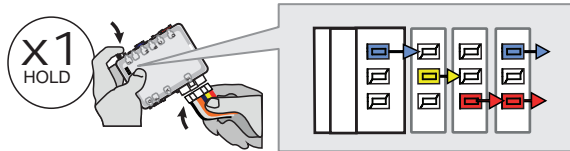
- 1x FLASH LINK UPDATER, SOFTWARE
- 1x FLASH LINK MANAGER SOFTWARE
- 1x Microsoft Windows Computer with Internet connection

OR
OU

- 1x FLASH LINK MOBILE
- 1x FLASH LINK MOBILE APP
- 1x Smartphone Android or iOS with Internet connection (Internet provider charges may apply)

BEFORE PROGRAMMING SET THE UNIT OPTIONS AND SAVE.

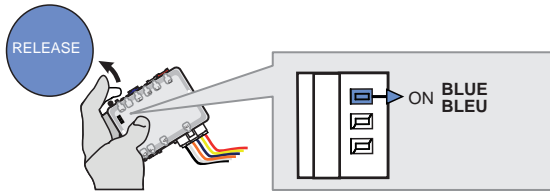
1



Press and hold the programming button:
Connect the 6-PIN Main harness (White connector).

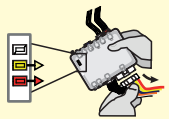
↳ The LEDs will alternate between BLUE, RED, YELLOW & BLUE/RED flashes.

2

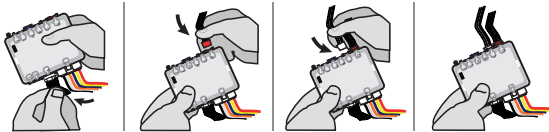


Release the programming button when the LED is BLUE.

If the BLUE LED is not ON solid disconnect the 6-Pin Main connector and go back to step 1.

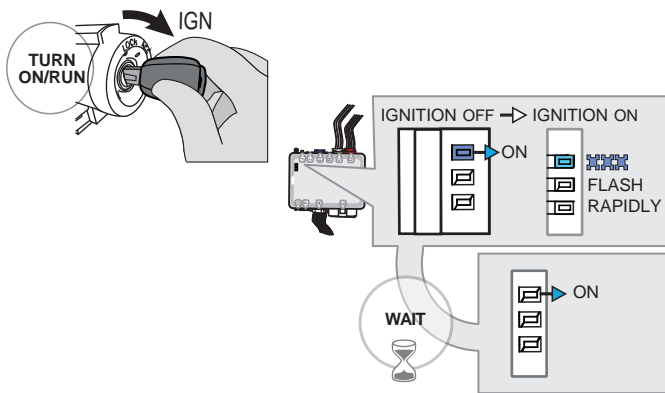


3



Insert the required remaining connectors.

4



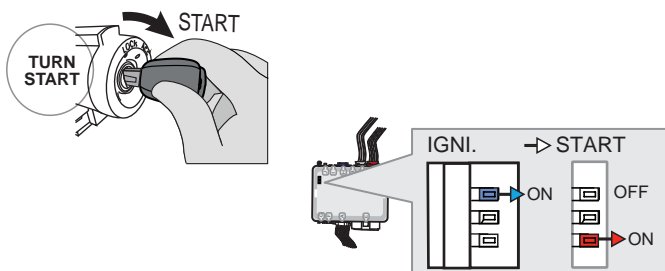
Turn the key to the Ignition ON/RUN position.

↳ The BLUE LED will flash rapidly.

Wait,

↳ The BLUE LED will turn ON solide.

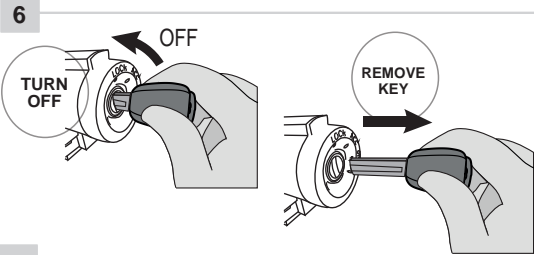
5



Start the vehicle.

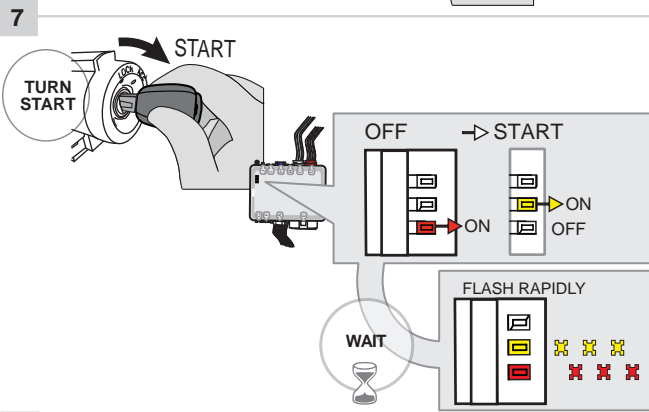
↳ The BLUE LED will turn OFF.
↳ The RED LED will turn ON.

KEY BYPASS PROGRAMMING PROCEDURE 2/2



Turn the key to the OFF position.

Remove the key from the ignition switch.

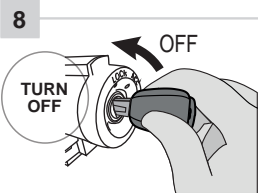


Start the vehicle.

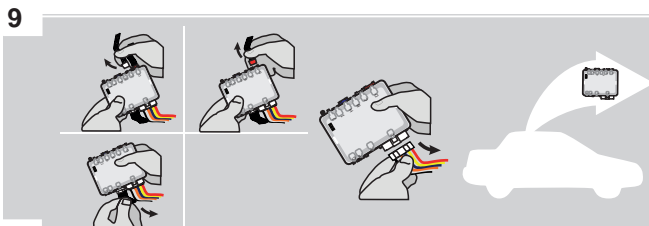
- ↳ The RED LED will turn OFF.
- ↳ The YELLOW LED will turn ON.

Wait,

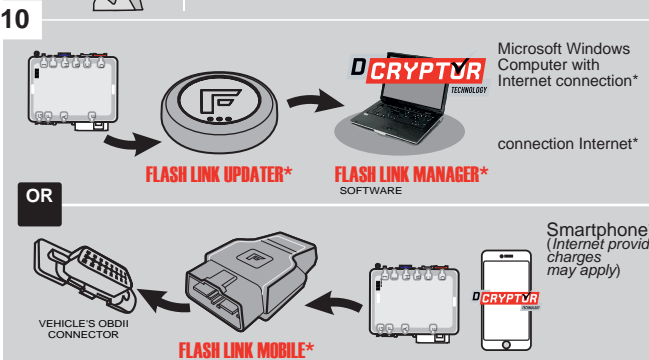
- ↳ The RED and YELLOW LEDs will alternate.



Turn the key to the OFF position.

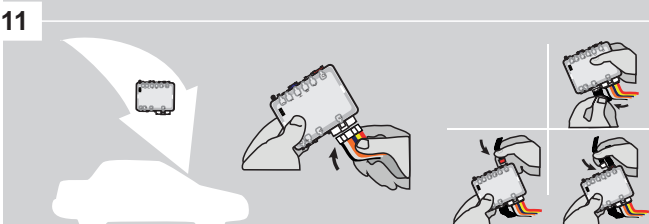


Disconnect all connectors and after the 6-Pin (Main-Harness) or the 4-Pin Data-link connector.



Use the tool: FLASH LINK UPDATER or FLASH LINK MOBILE to visit the DCryptor menu.

*Parts required (not included)



AFTER DCRYPTOR PROGRAMMING COMPLETED Go back to the vehicle and reconnect the 6-Pin (Main-Harness) or the 4-pins (Data-Link) connector and after all the remaining connector.



The module is now programmed.



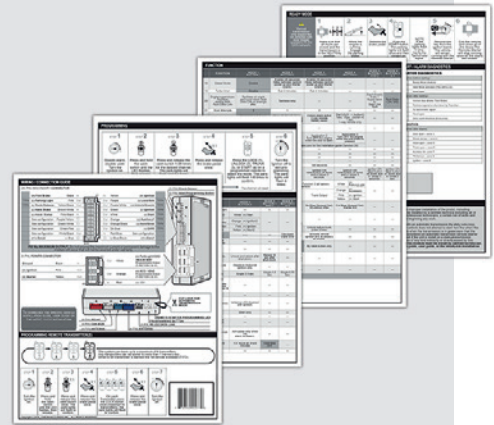
REMOTE STARTER / ALARM VERIFICATION PROCEDURE

Test the remote starter. Remote start the vehicle.

REMOTE STARTER PROGRAMMING PROCEDURE



REFER TO THE **QUICK INSTALL GUIDE** INCLUDED WITH THE MODULE FOR THE REMOTE STARTER PROGRAMMING.



REMOTE STARTER FUNCTIONALITY



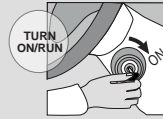
All doors must be closed.



Remote start the vehicle.



Unlock the doors with the remote-starter remote or the OEM remote.



Insert and Turn the key to the Ignition ON/RUN position.



Press the brake pedal.



The vehicle can now be put in to gear and driven.

THAR-ONE-TOY12 THARNSS INSTALLATION

ADDENDUM - SUGGESTED WIRING CONFIGURATION

VEHICLE	YEARS	Vehicle functions supported in this diagram (functional if equipped)															
		Transponder Bypass	T-harness Harnais en T	Lock	Unlock	Arm	Disarm	Parking Lights	Trunk (open)	Tachometer	Autolight Off	Door Status	Trunk Status	Hand-Brake Status	Foot-Brake Status	OEM remote Monitoring	R.S. OEM remote Stand Alone compatible
TOYOTA																	
Camry	2018-2020	•	•	•	•	•	•	•	•	•	•	•	•	•	•	•	•

COMPATIBLE MODULE REQUIRED:

QR CODE ON THE LABEL MANUFACTURED AFTER: 2019

FIRMWARE VERSION

79.[66]

TOYOTA/LEXUS MINIMUM

To add the firmware version and the options, use the **FLASH LINK UPDATER** or **FLASH LINK MOBILE** tool, sold separately.

UNIT OPTION	DESCRIPTION
D5	Lock after start
A11 OFF	Hood trigger (Output Status).

FUNCTION	MODE	DESCRIPTION

FUNCTION	MODE	DESCRIPTION

MANDATORY INSTALL

*** HOOD PIN** **HOOD STATUS**: THE HOOD PIN SWITCH (INCLUDED) MUST BE INSTALLED IF THE VEHICLE CAN BE REMOTE STARTED WITH THE HOOD OPEN, SET FUNCTION A11 TO OFF.

A11 OFF

SECURITY STICKER

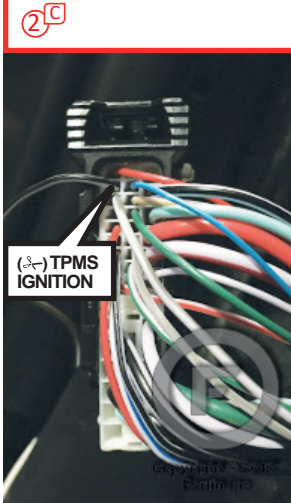
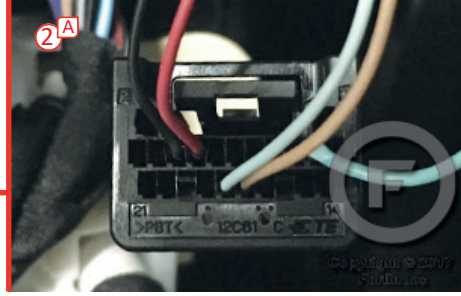
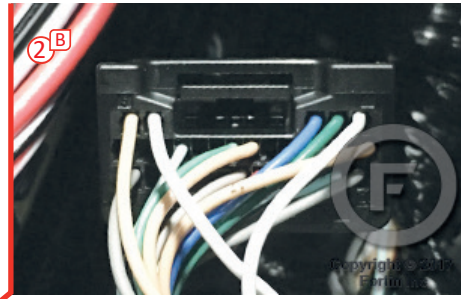
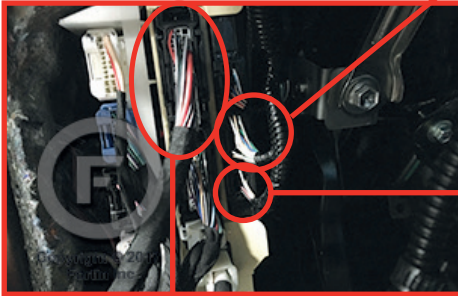
Included

Notice: the installation of safety elements are mandatory. The hood pin and the sticker are essential security elements and must be installed.

THIS MODULE MUST BE INSTALLED BY A QUALIFIED TECHNICIAN. A WRONG CONNECTION CAN CAUSE PERMANENT DAMAGE TO THE VEHICLE.

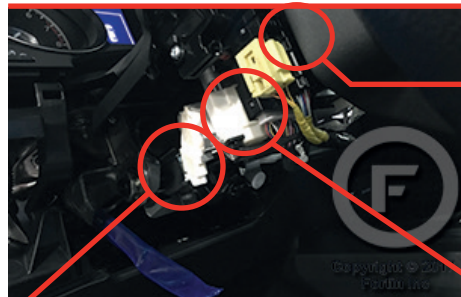
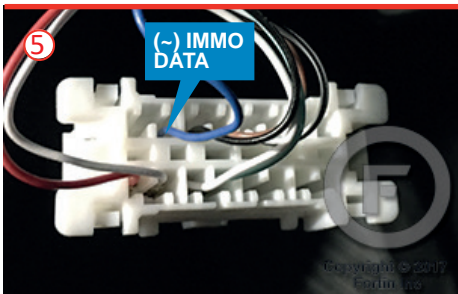
DESCRIPTION

② ECU, Driver's side

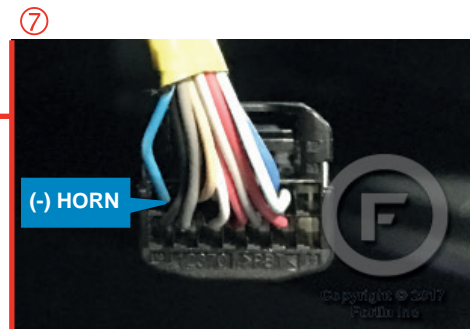


At Steering Column

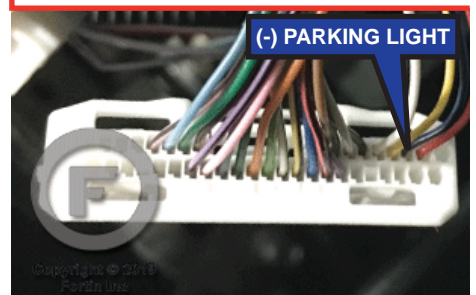
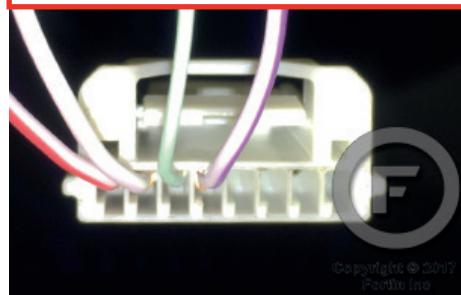
⑤ OBDII Connector



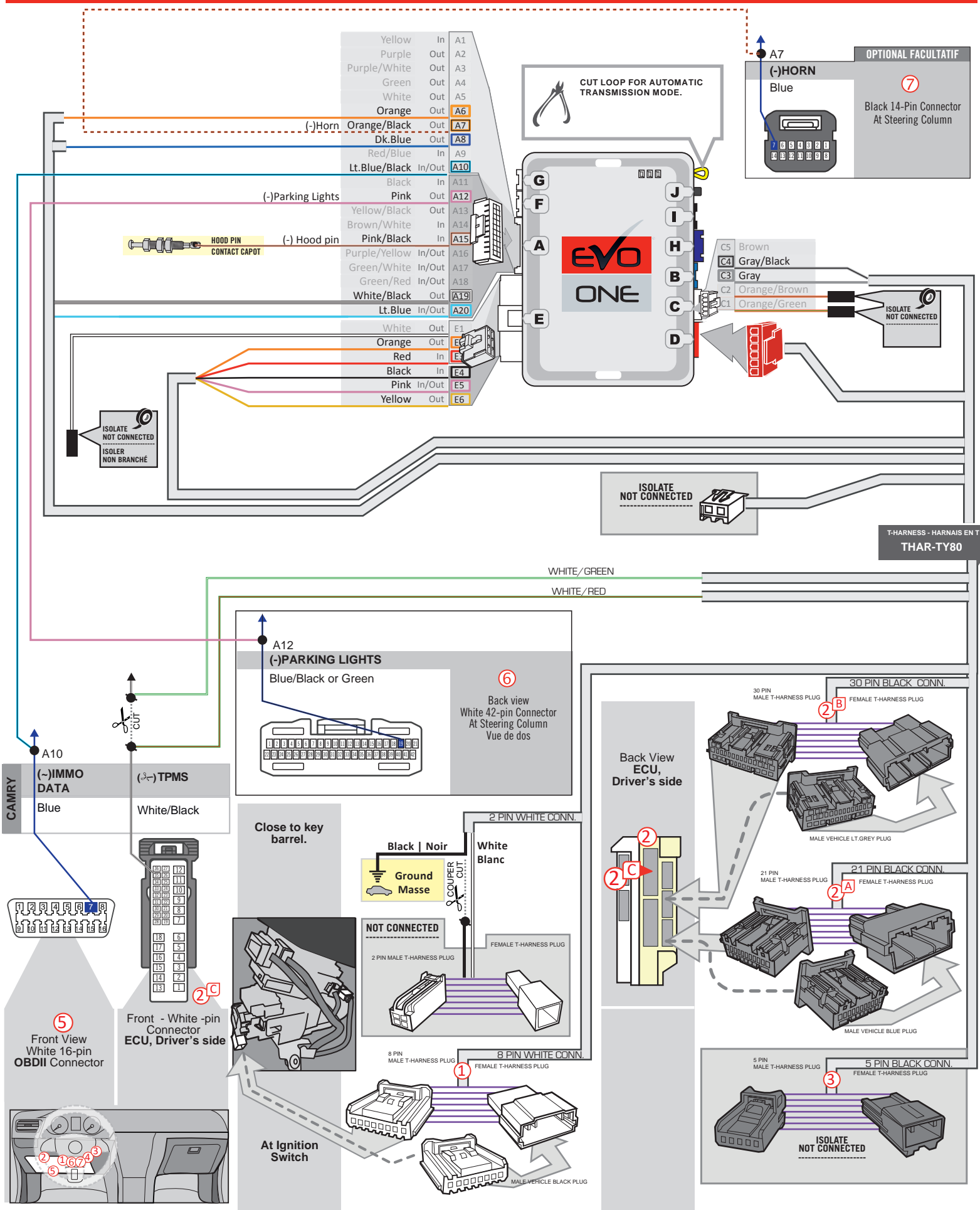
① At Ignition Switch



⑥



WIRING CONNECTION



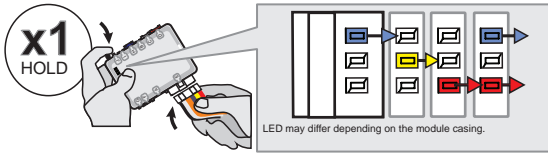
KEY BYPASS PROGRAMMING PROCEDURE



Do not use the grey key.



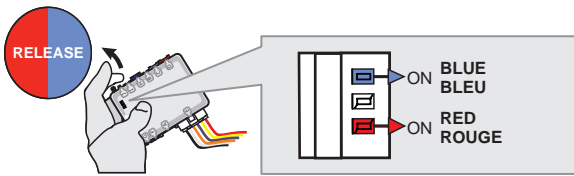
1



Press and hold the programming button:
Insert the 6-Pin Main connector.

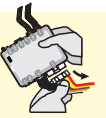
↳ The LEDs will alternate between BLUE, RED, YELLOW & BLUE/RED flashes.

2

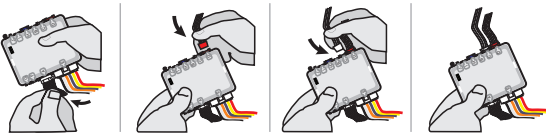


Release the programming button when the LED's are RED and BLUE.

If the LED's are not solid BLUE and RED **disconnect** the 6-Pin connector (Main-Harness) and go back to step 1.

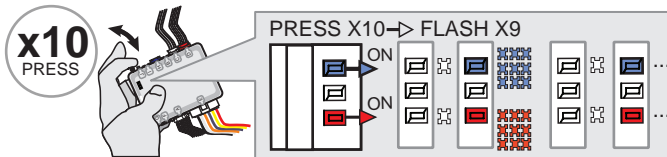


3



Insert the required remaining connectors.

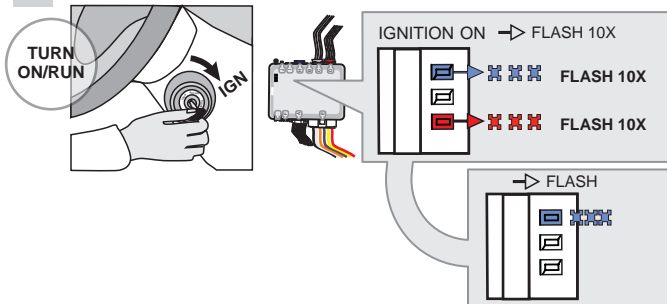
4



Press and release the programming button ten (10x) times.

↳ The RED and BLUE LED's will alternate between 9 flashes and a pause.

5

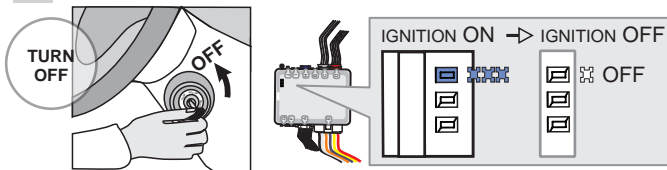


Turn the Ignition to the ON/RUN position.

↳ The RED and BLUE LED's will flash rapidly 10x times. Key bypass programmed.

↳ The BLUE LED will flash rapidly. CAN-Bus programmed.

6



Turn the Ignition to the OFF position.

↳ The BLUE LED will turn off.



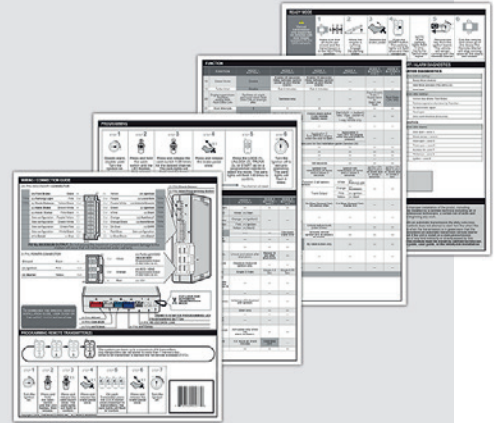
The module is now programmed.

Use the remote of the remote starter or security system to test all of the supported features to ensure proper programming.

REMOTE STARTER PROGRAMMING PROCEDURE



REFER TO THE **QUICK INSTALL GUIDE** INCLUDED WITH THE MODULE FOR THE REMOTE STARTER PROGRAMMING.



REMOTE STARTER FUNCTIONALITY



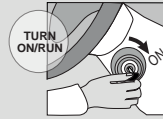
All doors must be closed.



Remote start the vehicle.



Unlock the doors with the remote-starter remote or the OEM remote.



Insert and Turn the key to the Ignition ON/RUN position.



Press the brake pedal.



The vehicle can now be put in to gear and driven.