


**THAR-GM4 THARNESSE  
INSTALLATION**

 ADDENDUM - SUGGESTED WIRING  
CONFIGURATION

VEHICLE	YEARS	Vehicle functions supported in this diagram (functional if equipped)														
		Immobilizer bypass	T-Harness T-Harnais	Lock	Unlock	Arm	Disarm	Trunk (open)	Tachometer	Heated Seats	Door Status	Trunk Status	Hood Status	Hand-Brake Status	Foot-Brake Status	PK3, Passlock
<b>CADILLAC</b>																
Escalade	2007-2014	•	•	•	•	•	•	•	•	•	•	•	•	•	•	•
<b>CHEVROLET</b>																
Avalanche	2007-2013	•	•	•	•	•	•	•	•	•	•	•	•	•	•	•
Express Van	2008-2017	•	•	•	•	•	•	•	•	•	•	•	•	•	•	•
Express 2500	2008-2016	•	•	•	•	•	•	•	•	•	•	•	•	•	•	•
Express 3500	2008-2016	•	•	•	•	•	•	•	•	•	•	•	•	•	•	•
Silverado 1500	2007-2013	•	•	•	•	•	•	•	•	•	•	•	•	•	•	•
Silverado 2500 Premium Package	2007-2014	•	•	•	•	•	•	•	•	•	•	•	•	•	•	•
Silverado 3500 Premium Package	2007-2014	•	•	•	•	•	•	•	•	•	•	•	•	•	•	•
Silverado Hybrid Premium Package	2007-2013	•	•	•	•	•	•	•	•	•	•	•	•	•	•	•
Suburban	2007-2014	•	•	•	•	•	•	•	•	•	•	•	•	•	•	•
Tahoe	2007-2014	•	•	•	•	•	•	•	•	•	•	•	•	•	•	•
<b>GMC</b>																
Savana	2008-2020	•	•	•	•	•	•	•	•	•	•	•	•	•	•	•
Sierra 1500 Premium Package	2007-2013	•	•	•	•	•	•	•	•	•	•	•	•	•	•	•
Sierra 2500 Premium Package	2007-2014	•	•	•	•	•	•	•	•	•	•	•	•	•	•	•
Sierra 3500 Premium Package	2007-2014	•	•	•	•	•	•	•	•	•	•	•	•	•	•	•
Sierra HD	2007-2014	•	•	•	•	•	•	•	•	•	•	•	•	•	•	•
Yukon	2007-2014	•	•	•	•	•	•	•	•	•	•	•	•	•	•	•




FIRMWARE VERSION

**70.[41]**


GM MINIMUM

To add the firmware version and the options, use the **FLASH LINK UPDATER** or **FLASH LINK MOBILE** tool, sold separately.

IF THE VEHICLE IS NOT EQUIPPED WITH FUNCTIONAL HOOD PIN:	<b>A11</b>	<div style="background-color: red; color: white; padding: 5px; display: inline-block;">OFF</div>	Hood trigger (Output Status).
 <p>Program bypass option:</p>	UNIT OPTION		DESCRIPTION
	<b>C1</b>		OEM Remote status (Lock/Unlock) monitoring

**MANDATORY INSTALL**

**\*HOOD PIN**



**HOOD STATUS:** THE HOOD PIN SWITCH MUST BE INSTALLED IF THE VEHICLE CAN BE REMOTE STARTED WITH THE HOOD OPEN, SET FUNCTION **A11** TO OFF.

A11

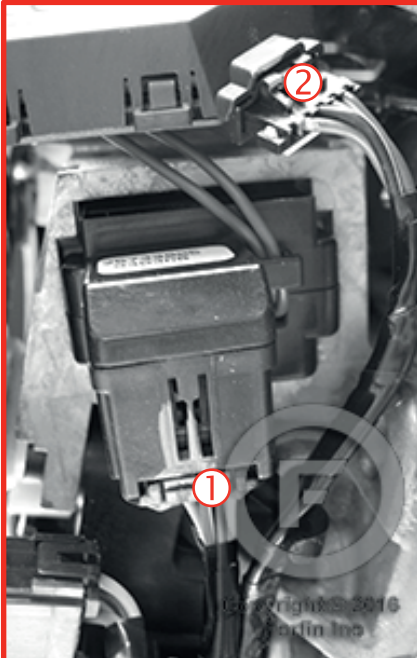
OFF

**Notice:** the installation of safety elements are mandatory. The hood pin is an essential security element and must be installed.

**THIS MODULE MUST BE INSTALLED BY A QUALIFIED TECHNICIAN. A WRONG CONNECTION CAN CAUSE PERMANENT DAMAGE TO THE VEHICLE.**

DESCRIPTION

① ② Ignition Barrel



① Ignition connector\*



② Transponder connector



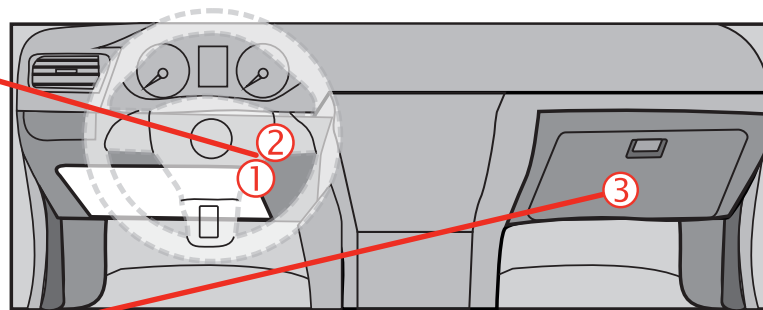
12V BATTERY



**ATTENTION THE T-HARNESS CURRENT IS LIMITED AT 2 AMP MAXIMUM.**

If the parking lights (+) require more than 2Amp, connect the remote-starter's power directly to the vehicles battery with the appropriate fuse.

Some remote starters can not be powered through Data-Link. In these cases connect the remote starter's fused 12V power wire directly to the T-Harness.



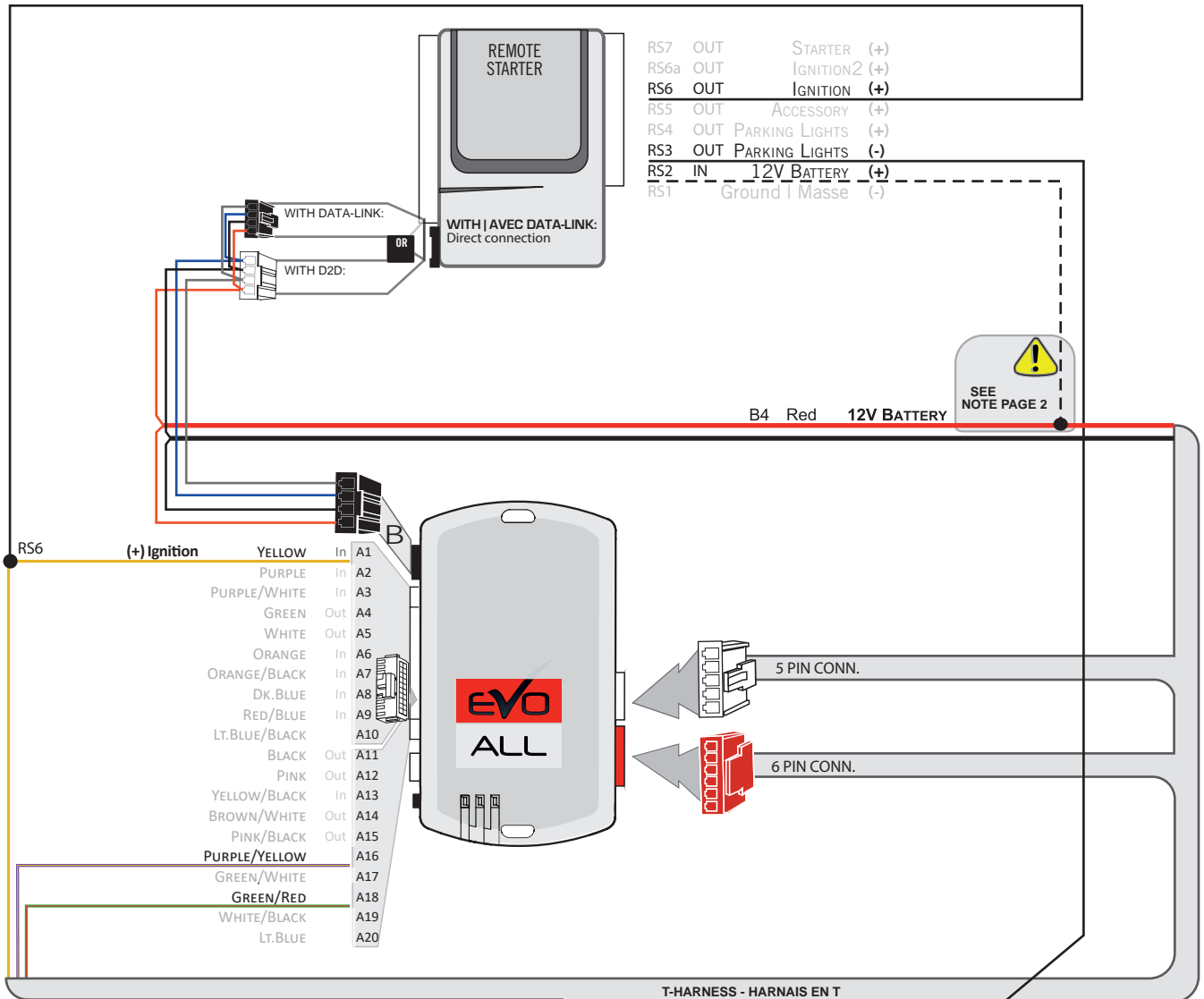
③ BCM Passenger's side dash



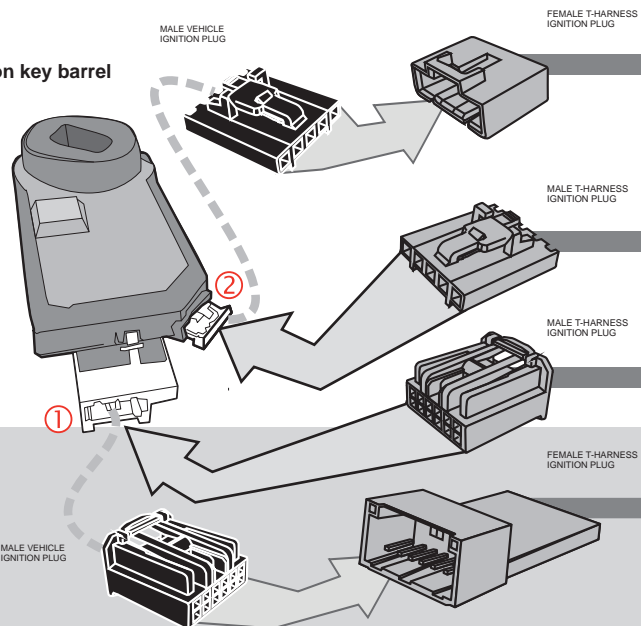
(-) PARKING LIGHTS



WIRING CONNECTION WITH DATA-LINK



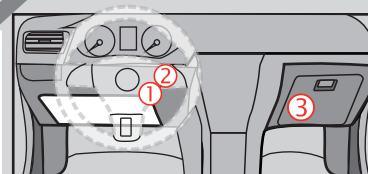
Ignition key barrel



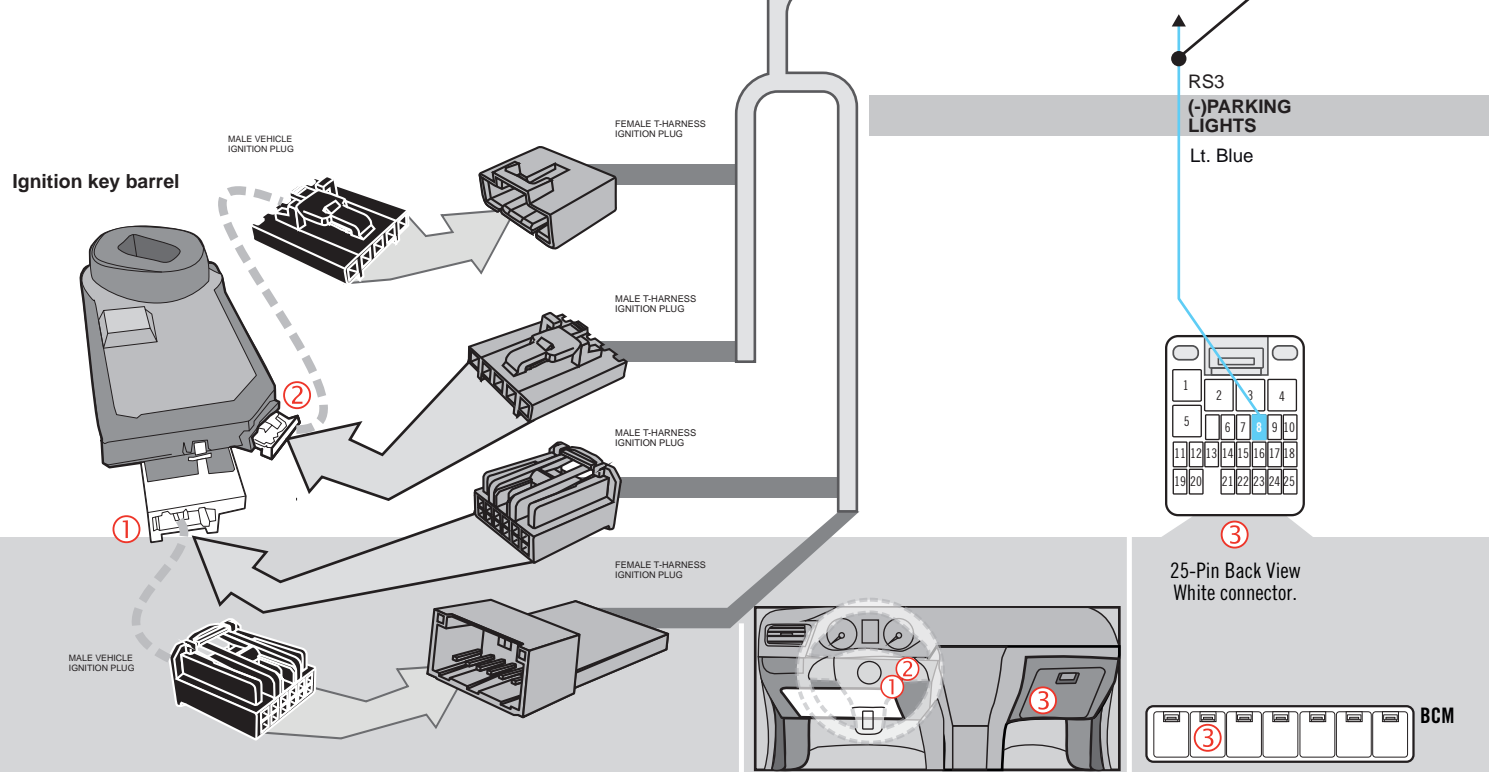
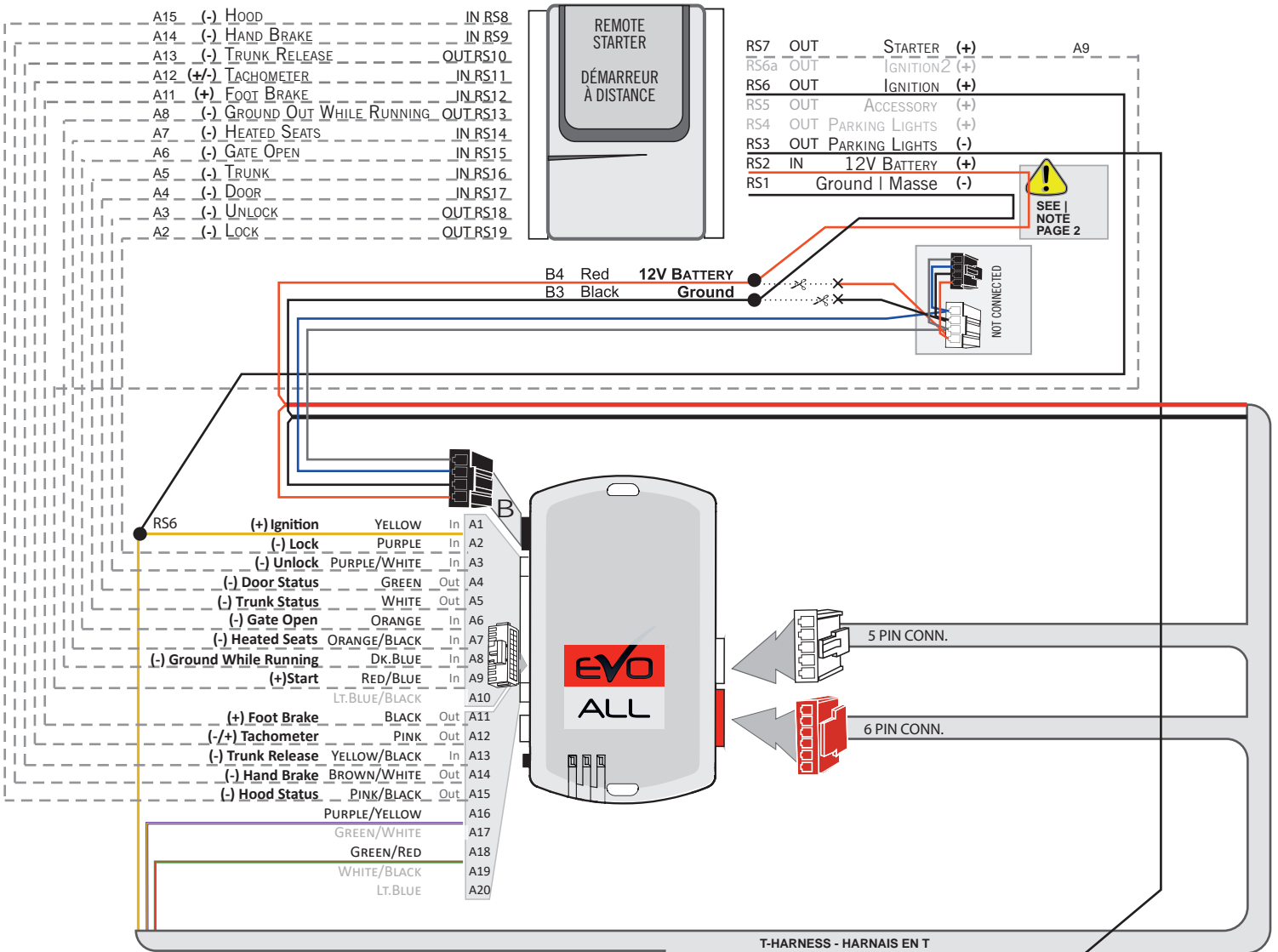
RS3  
(-)PARKING LIGHTS  
Lt. Blue



25-Pin Back View  
White connector.



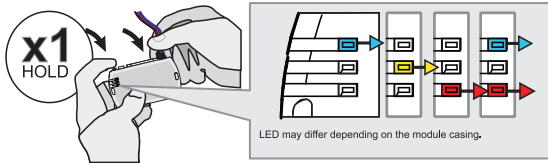
WIRING CONNECTION WITHOUT DATA-LINK





KEY BYPASS PROGRAMMING PROCEDURE 1/2 |

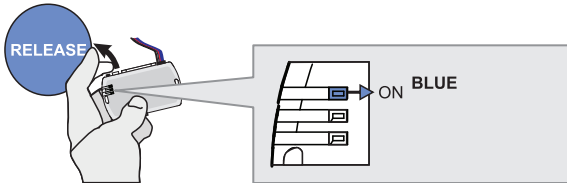
1



**Press and hold** the programming button:  
**Connect** the 4-PIN Data-link harness (Black connector).

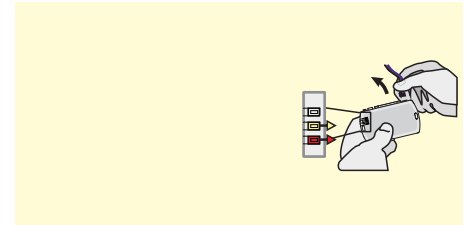
↳ The Blue, Red, Yellow and Blue & Red LEDs will alternatively illuminate.

2

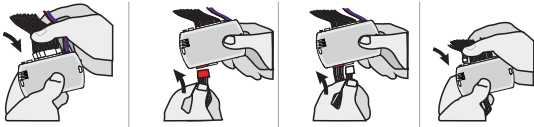


**Release** the programming button when the LED is BLUE.

**Relâchez** le bouton de programmation quand la DEL est BLEU.

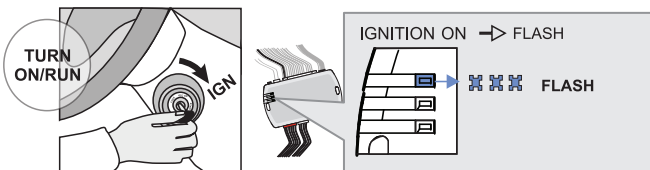


3



**Insert** the required remaining connectors.

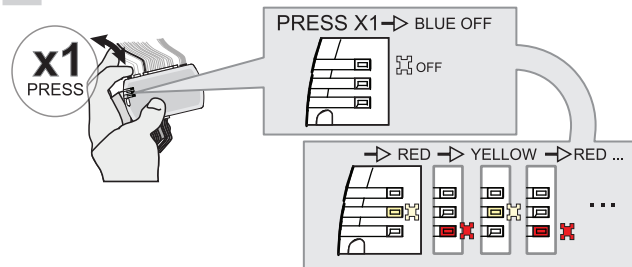
4



**Turn** the key to the Ignition ON/RUN position.

↳ The Blue LED will flash rapidly.

5

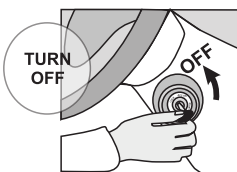


**Press and release** the programming button once (1x).

↳ The Blue LED will turn OFF.

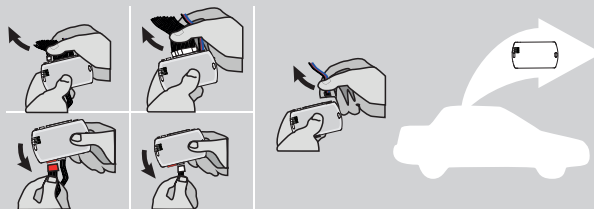
↳ The YELLOW and RED LEDs will alternate..

6



**Turn** the key to the OFF position.

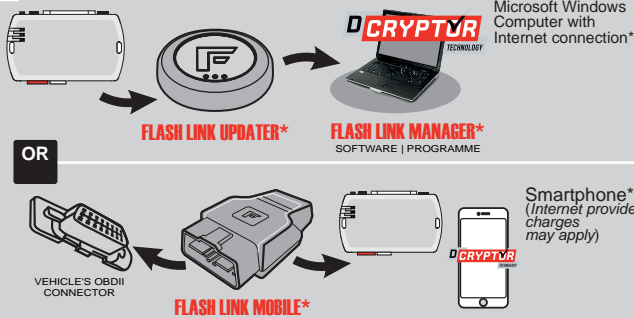
7



**Disconnect** all the connectors and after the Data-Link (4-pins) connector.

KEY BYPASS PROGRAMMING PROCEDURE 2/2 |

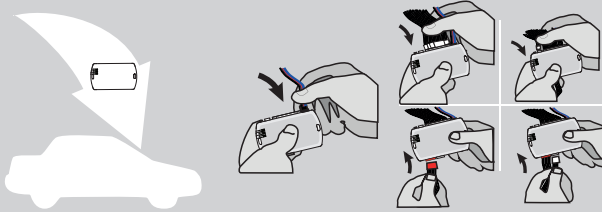
8



Use the tool: **FLASH LINK UPDATER** or **FLASH LINK MOBILE** to visit the DCryptor menu.

\*Parts required (not included)

9



**AFTER DCRYPTOR PROGRAMMING COMPLETED**  
Go back to the vehicle and **reconnect** the 4-Pin (Data-Link) connector and after, all the remaining connector.



The module is now programmed.



**REMOTE STARTER / ALARM VERIFICATION PROCEDURE**

Test the remote starter. Remote start the vehicle.

**THAR-GM4 THARNES INSTALLATION**

## ADDENDUM - SUGGESTED WIRING CONFIGURATION

VEHICLE	YEARS	Vehicle functions supported in this diagram (functional if equipped)																	
		Immobilizer bypass	T-Harness T-Harnais	Lock	Unlock	Arm	Disarm	Trunk (open)	Parking Lights	RAP Disable	Tachometer	Heated Seats	Door Status	Trunk Status	Hood Status	Hand-Brake Status	Foot-Brake Status	PK3, Passlock	OEM Remote monitoring
<b>CHEVROLET</b>																			
Silverado 1500 Premium Package	2007-2013	•	•	•	•	•	•	•	•	•	•	•	•	•	•	•	•	•	•
Silverado 2500	2007-2014	•	•	•	•	•	•	•	•	•	•	•	•	•	•	•	•	•	•
Silverado 3500	2007-2014	•	•	•	•	•	•	•	•	•	•	•	•	•	•	•	•	•	•
Silverado Hybrid	2007-2013	•	•	•	•	•	•	•	•	•	•	•	•	•	•	•	•	•	•
<b>GMC</b>																			
Sierra 1500	2007-2013	•	•	•	•	•	•	•	•	•	•	•	•	•	•	•	•	•	•
Sierra 2500	2007-2014	•	•	•	•	•	•	•	•	•	•	•	•	•	•	•	•	•	•
Sierra 3500	2007-2014	•	•	•	•	•	•	•	•	•	•	•	•	•	•	•	•	•	•

FIRMWARE VERSION

70.[41]

GM MINIMUM

To add the firmware version and the options, use the **FLASH LINK UPDATER** or **FLASH LINK MOBILE** tool, sold separately.

IF THE VEHICLE IS NOT EQUIPPED WITH FUNCTIONAL HOOD PIN:	A11	OFF	Hood trigger (Output Status).
<p>Program bypass option:</p>	C1		UNIT OPTION DESCRIPTION OEM Remote status (Lock/Unlock) monitoring

**MANDATORY INSTALL**
**\*HOOD PIN**


**HOOD STATUS:** THE HOOD PIN SWITCH MUST BE INSTALLED IF THE VEHICLE CAN BE REMOTE STARTED WITH THE HOOD OPEN, SET FUNCTION A11 TO OFF.

A11

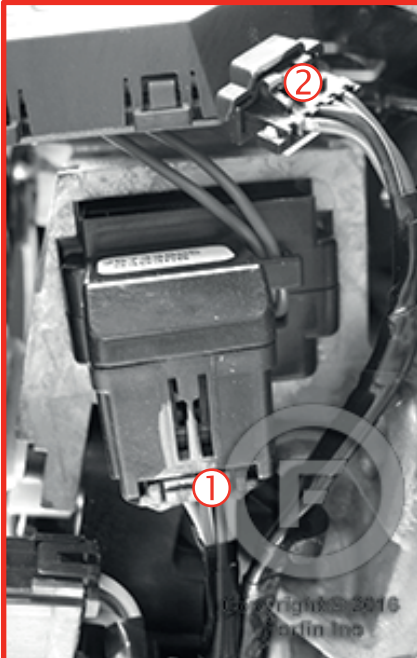
OFF

**Notice:** the installation of safety elements are mandatory. The hood pin is an essential security element and must be installed.

THIS MODULE MUST BE INSTALLED BY A QUALIFIED TECHNICIAN. A WRONG CONNECTION CAN CAUSE PERMANENT DAMAGE TO THE VEHICLE.

DESCRIPTION

① ② Ignition Barrel



① Ignition connector\*



② Transponder connector



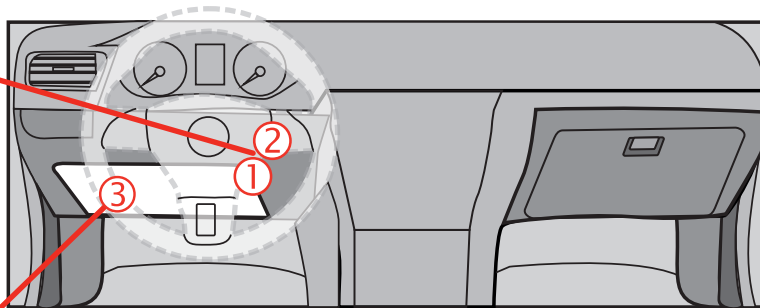
12V BATTERY



**ATTENTION THE T-HARNESS CURRENT IS LIMITED AT 2 AMP MAXIMUM.**

If the parking lights (+) require more than 2Amp, connect the remote-starter's power directly to the vehicles battery with the appropriate fuse.

Some remote starters can not be powered through Data-Link. In these cases connect the remote starter's fused 12V power wire directly to the T-Harness.

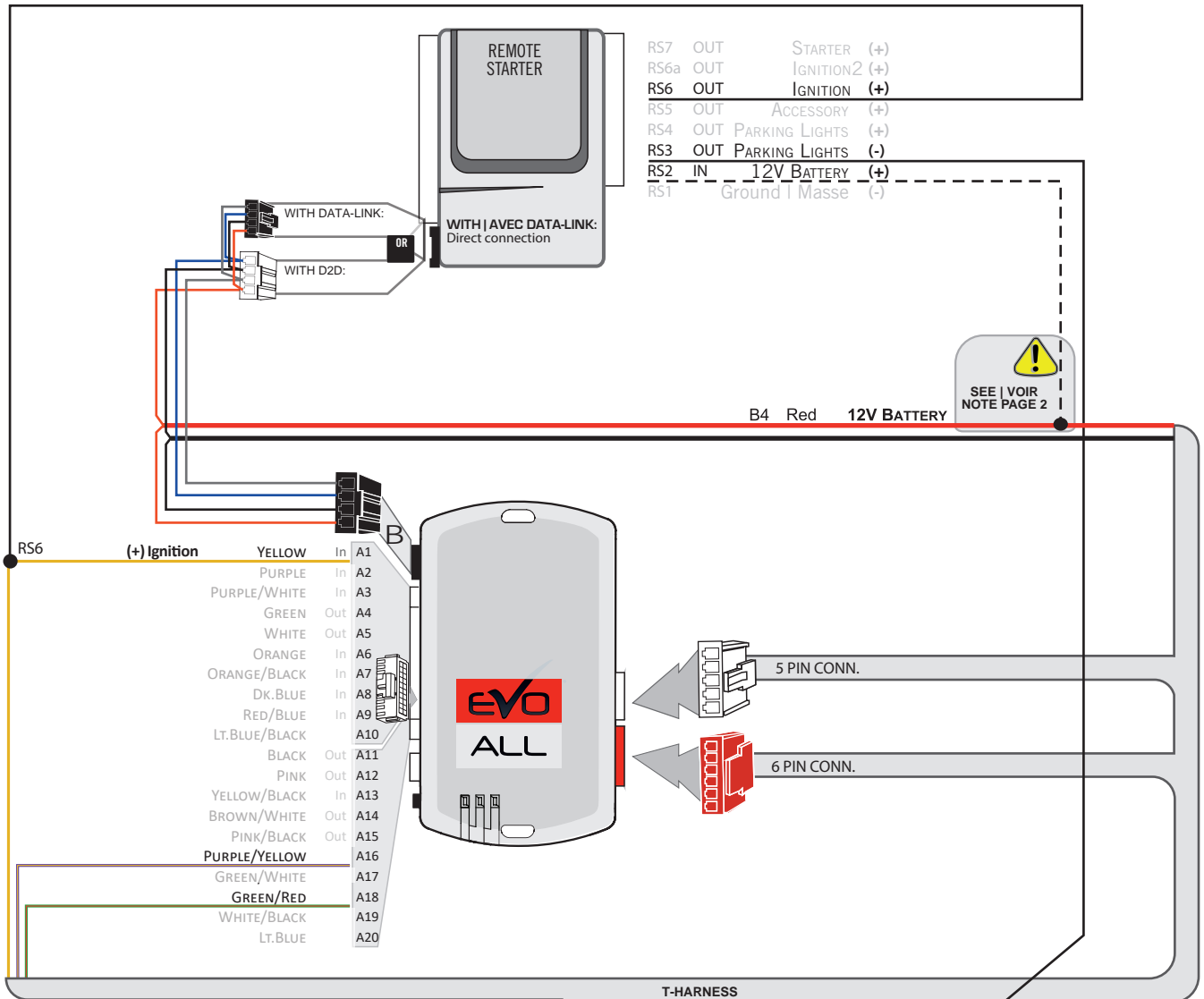


③ BCM Driver's side dash

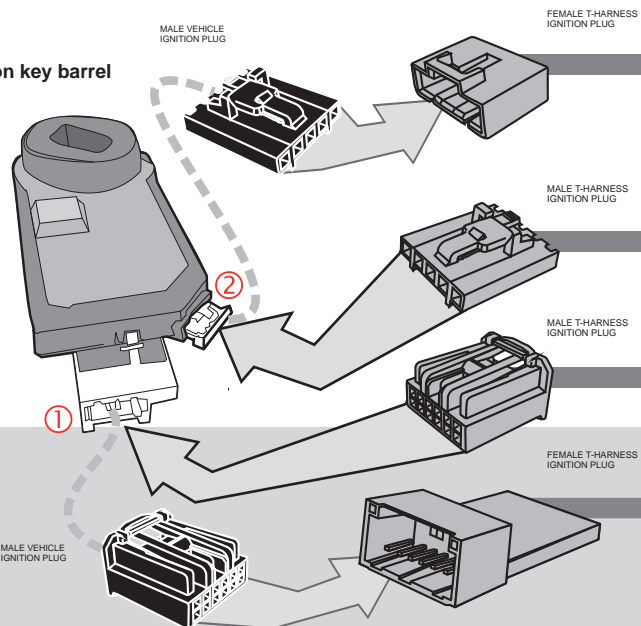


(-)PARKING LIGHTS

WIRING CONNECTION WITH DATA-LINK



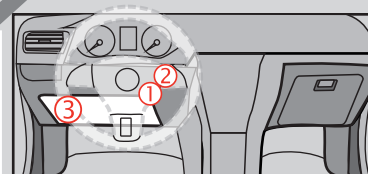
Ignition key barrel



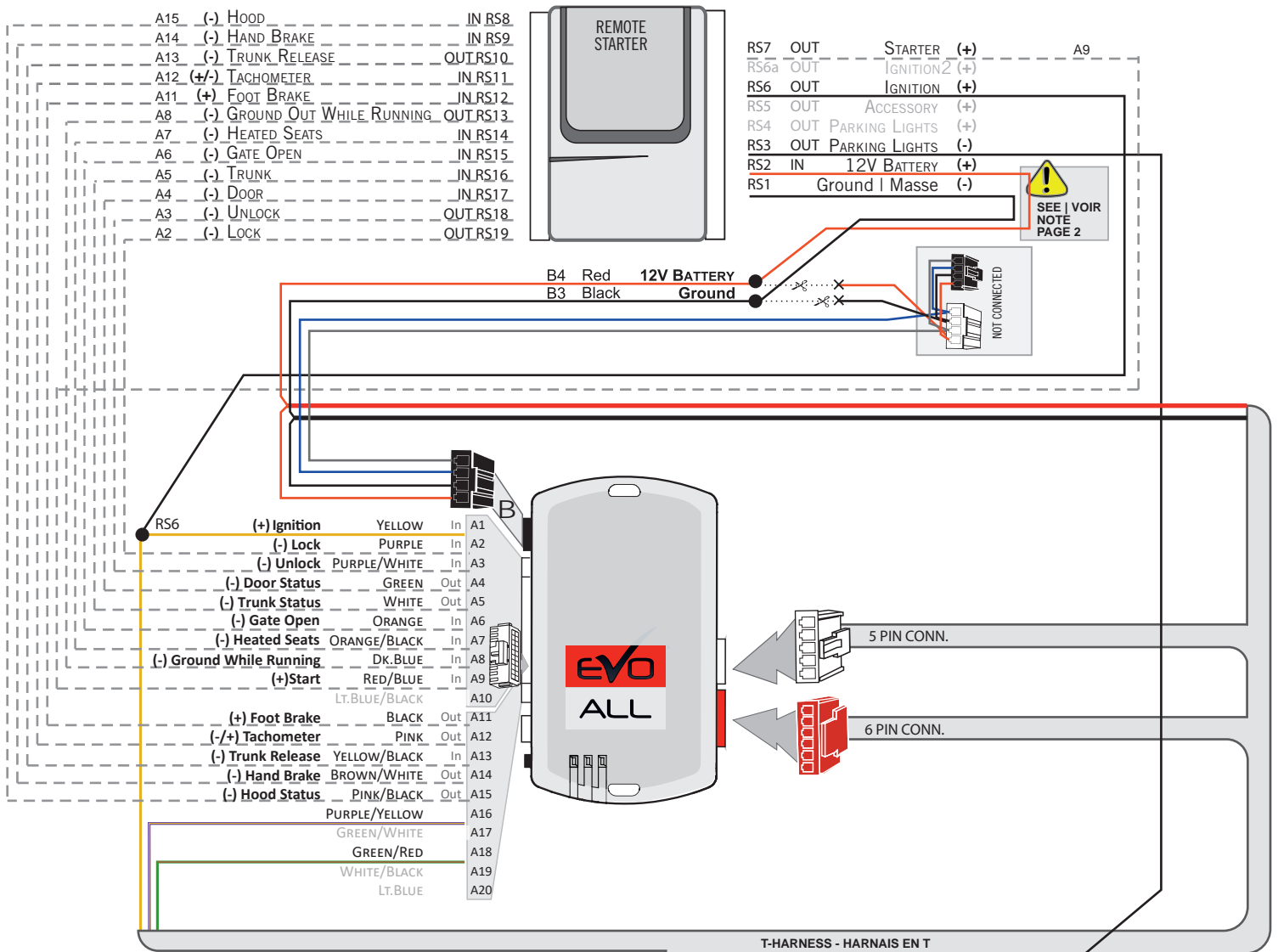
RS3  
(-)PARKING LIGHTS  
Lt. Blue



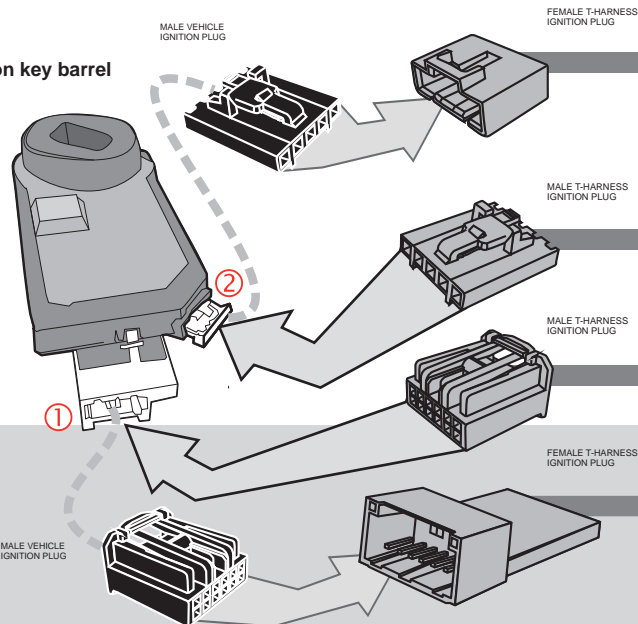
25-Pin Back View White connector.



WIRING CONNECTION WITHOUT DATA-LINK



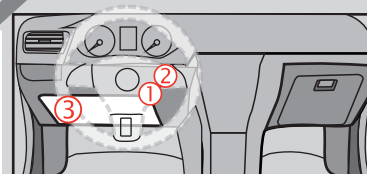
Ignition key barrel



RS3  
(-) PARKING LIGHTS  
Lt. Blue



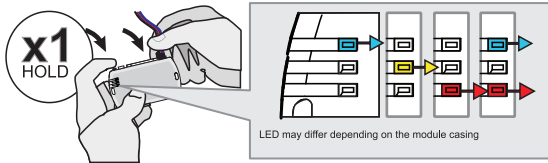
25-Pin Back View White connector.





**KEY BYPASS PROGRAMMING PROCEDURE 1/2**

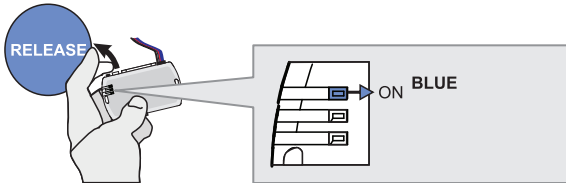
**1**



**Press and hold** the programming button:  
**Connect** the 4-PIN Data-link harness (Black connector).

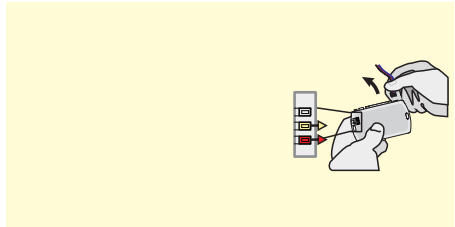
↳ The Blue, Red, Yellow and Blue & Red LEDs will alternatively illuminate.

**2**

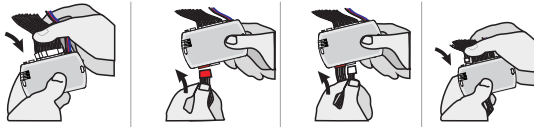


**Release** the programming button when the LED is BLUE.

**Relâchez** le bouton de programmation quand la DEL est BLEU.

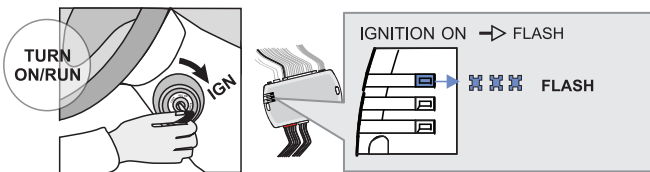


**3**



**Insert** the required remaining connectors.

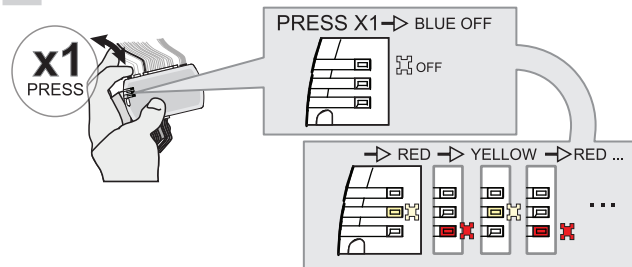
**4**



**Turn** the key to the Ignition ON/RUN position.

↳ The Blue LED will flash rapidly.

**5**

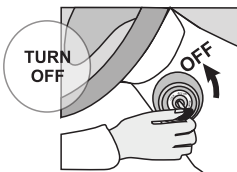


**Press and release** the programming button once (1x).

↳ The Blue LED will turn OFF.

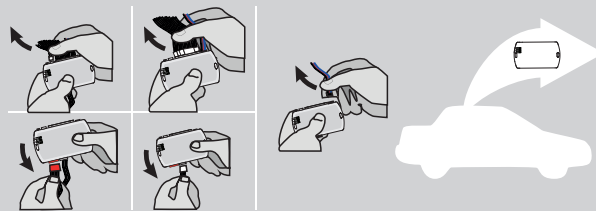
↳ The YELLOW and RED LEDs will alternate..

**6**



**Turn** the key to the OFF position.

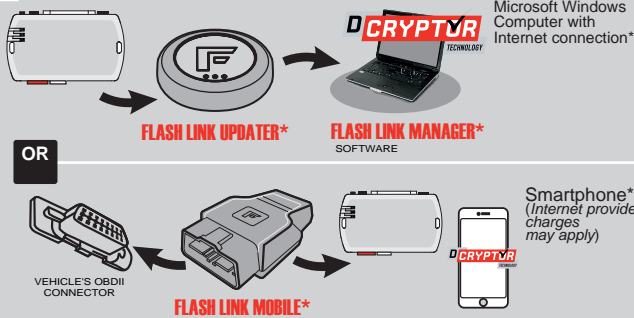
**7**



**Disconnect** all the connectors and after the Data-Link (4-pins) connector.

KEY BYPASS PROGRAMMING PROCEDURE 2/2

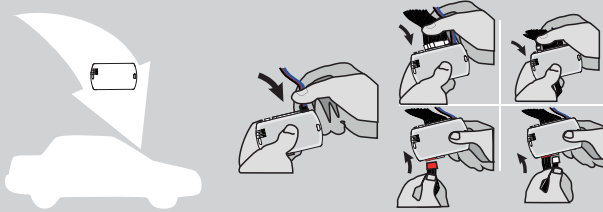
8



Use the tool: **FLASH LINK UPDATER** or **FLASH LINK MOBILE** to visit the DCryptor menu.

\*Parts required (not included)

9



**AFTER DCRYPTOR PROGRAMMING COMPLETED**  
Go back to the vehicle and **reconnect** the 4-Pin (Data-Link) connector and after, all the remaining connector.



The module is now programmed.



**REMOTE STARTER / ALARM VERIFICATION PROCEDURE**

Test the remote starter. Remote start the vehicle.

# THAR-GM4 THARNNESS STAND ALONE INSTALLATION

## ADDENDUM - SUGGESTED WIRING CONFIGURATION



**ONLY COMPATIBLE WITH AUTOMATIC TRANSMISSION VEHICLES.**

VEHICLE	YEARS	Vehicle functions supported in this diagram (functional if equipped)															
		Immobilizer bypass	T-Harness T-Harnais	Lock	Unlock	Arm	Disarm	Trunk (open)	Tachometer	Heated Seats	Door Status	Trunk Status	Hood Status	Hand-Brake Status	Foot-Brake Status	PK3, Passlock	OEM Remote monitoring
<b>CADILLAC</b>																	
Escalade	2007-2014	•	•	•	•	•	•	•	•	•	•	•	•	•	•	•	•
<b>CHEVROLET</b>																	
Avalanche	2007-2013	•	•	•	•	•	•	•	•	•	•	•	•	•	•	•	•
Express Van	2008-2017	•	•	•	•	•	•	•	•	•	•	•	•	•	•	•	•
Express 2500	2008-2016	•	•	•	•	•	•	•	•	•	•	•	•	•	•	•	•
Express 3500	2008-2016	•	•	•	•	•	•	•	•	•	•	•	•	•	•	•	•
Silverado 1500	2007-2013	•	•	•	•	•	•	•	•	•	•	•	•	•	•	•	•
Silverado 2500 Premium Package	2007-2014	•	•	•	•	•	•	•	•	•	•	•	•	•	•	•	•
Silverado 3500 Premium Package	2007-2014	•	•	•	•	•	•	•	•	•	•	•	•	•	•	•	•
Silverado Hybrid Premium Package	2007-2013	•	•	•	•	•	•	•	•	•	•	•	•	•	•	•	•
Suburban	2007-2014	•	•	•	•	•	•	•	•	•	•	•	•	•	•	•	•
Tahoe	2007-2014	•	•	•	•	•	•	•	•	•	•	•	•	•	•	•	•
<b>GMC</b>																	
Savana	2008-2020	•	•	•	•	•	•	•	•	•	•	•	•	•	•	•	•
Sierra 1500 Premium Package	2007-2013	•	•	•	•	•	•	•	•	•	•	•	•	•	•	•	•
Sierra 2500 Premium Package	2007-2014	•	•	•	•	•	•	•	•	•	•	•	•	•	•	•	•
Sierra 3500 Premium Package	2007-2014	•	•	•	•	•	•	•	•	•	•	•	•	•	•	•	•
Sierra HD	2007-2014	•	•	•	•	•	•	•	•	•	•	•	•	•	•	•	•
Yukon	2007-2014	•	•	•	•	•	•	•	•	•	•	•	•	•	•	•	•

FIRMWARE VERSION

70.[45]

GM MINIMUM

To add the firmware version and the options, use the **FLASH LINK UPDATER** or **FLASH LINK MOBILE** tool, sold separately.

	<p><b>IF THE VEHICLE IS NOT EQUIPPED WITH FUNCTIONAL HOOD PIN:</b></p> <p style="font-size: 24px; font-weight: bold; color: red;">A11</p> <p style="font-size: 24px; font-weight: bold; color: red; background-color: red; padding: 2px;">OFF</p>	<p>Hood trigger (Output Status).</p>
<p>Program bypass option:</p>	<p>UNIT OPTION</p> <p style="font-size: 24px; font-weight: bold; color: red;">C1</p>	<p>DESCRIPTION</p> <p>OEM Remote status (Lock/Unlock) monitoring</p>

**MANDATORY INSTALL**

\*HOOD PIN

**HOOD STATUS:** THE HOOD PIN SWITCH MUST BE INSTALLED IF THE VEHICLE CAN BE REMOTE STARTED WITH THE HOOD OPEN, SET FUNCTION A11 TO OFF.

A11

OFF

**Notice:** the installation of safety elements are mandatory. The hood pin is an essential security element and must be installed.

THIS MODULE MUST BE INSTALLED BY A QUALIFIED TECHNICIAN. A WRONG CONNECTION CAN CAUSE PERMANENT DAMAGE TO THE VEHICLE.

**PARTS REQUIRED (NOT INCLUDED)**


1x **FLASH LINK UPDATER,**  
1x **FLASH LINK MANAGER**  
SOFTWARE  
1x Microsoft Windows Computer with Internet connection

OR

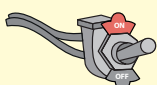
1x **FLASH LINK MOBILE**  
1x **FLASH LINK MOBILE APP**  
Smartphone Android or iOS with Internet connection (provider charges may apply).

**MANDATORY**

HOOD PIN



REMOTE START SAFETY OVERRIDE SWITCH


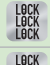





VALET SWITCH


Part #: RSPB available, Sold separately.

**Notice:** the installation of safety elements are mandatory. The hood pin and the valet switch are essential security elements and must be installed.


**STAND ALONE CONFIGURATION**

	Program bypass option	UNIT OPTION	DESCRIPTION
	<b>OEM Remote Stand Alone Remote Starter:</b>	<b>D1.10</b> 	<b>By default, LOCK, LOCK, LOCK</b> Par défaut, VERROUILLE,VERROUILLE,VERROUILLE
		<b>D1.1</b> 	
	<b>Program bypass option with oem remote:</b>	<b>C1</b>	OEM Remote Monitoring
	<b>Program bypass option with RF KIT antenna:</b>	<b>H1 to H6</b>	Supported RF Kits and <b>select RF Kit</b>


**REMOTE STARTER FUNCTIONALITY**



All doors must be closed.

**3X** 

Press the OEM remote's Lock button 3x to remote-start (or remote-stop) the vehicle.




The vehicle will START.

**REMOTE STARTER DIAGNOSTICS**  
MODULE RED LED

<b>x2 flash :</b>	Brake ON
<b>x3 flash :</b>	No tach
<b>x4 flash :</b>	Ignition before start
<b>x5 flash :</b>	Hood Open

**REMOTE STARTER WARNING CARD**



**CUT THIS WARNING CARD AND STICK IT ON A VISIBLE PLACE:**  
or use the package RSPB, Sold separately.

**WARNING | ATTENTION**

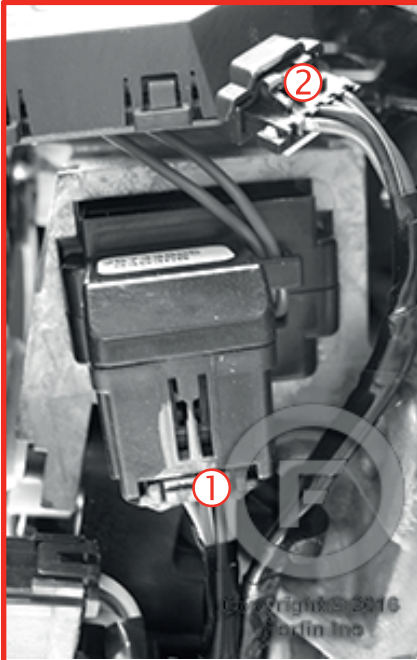


REMOTE STARTER

THE VEHICLE CAN BE STARTED BY EITHER: PRESSING THE LOCK BUTTON ON THE OEM REMOTE 3 TIMES CONSECUTIVELY OR BY A SMARTPHONE. **TURN ON** THE SAFETY SWITCH LOCATED UNDER THE DASHBOARD BEFORE WORKING ON THE VEHICLE.

DESCRIPTION

① ② Ignition Barrel



① Ignition connector\*



② Transponder connector



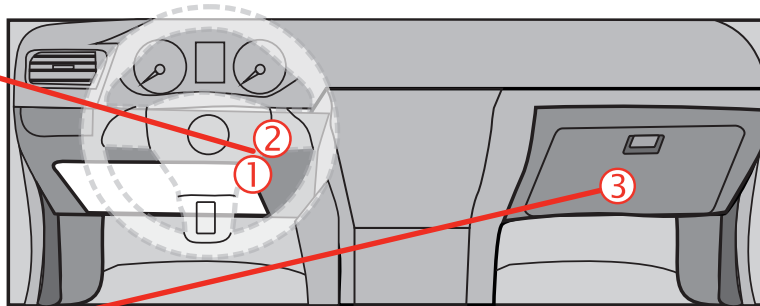
12V BATTERY



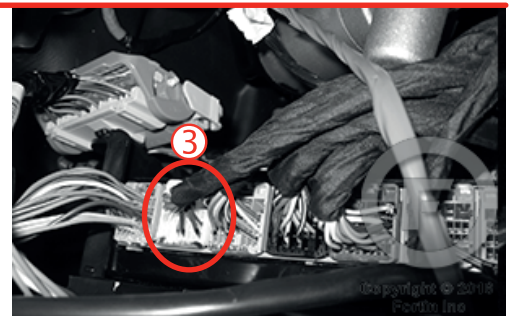
ATTENTION THE T-HARNESS CURRENT IS LIMITED AT 2 AMP MAXIMUM.

If the parking lights (+) require more than 2Amp. connect the remote-starter's power directly to the vehicles battery with the appropriate fuse.

Some remote starters can not be powered through Data-Link. In these cases connect the remote starter's fused 12V power wire directly to the T-Harness.

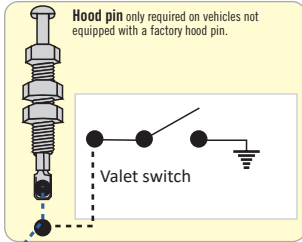


③ BCM Passenger's side dash

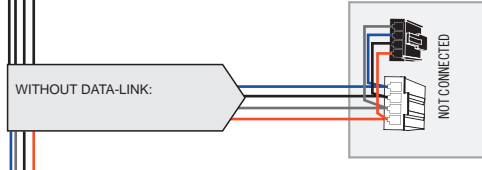
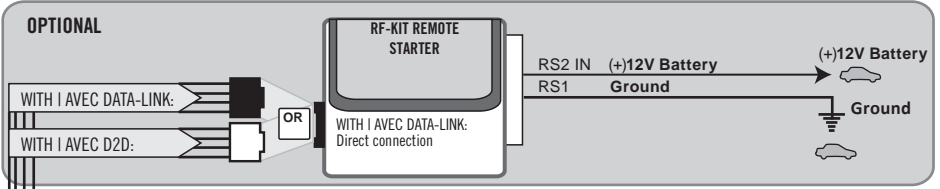


(-)PARKING LIGHTS

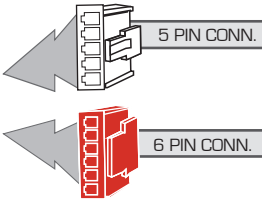
**AUTOMATIC TRANSMISSION WIRING CONNECTION**



Start / Stop external control  
 (-) Lock/Unlock input external control

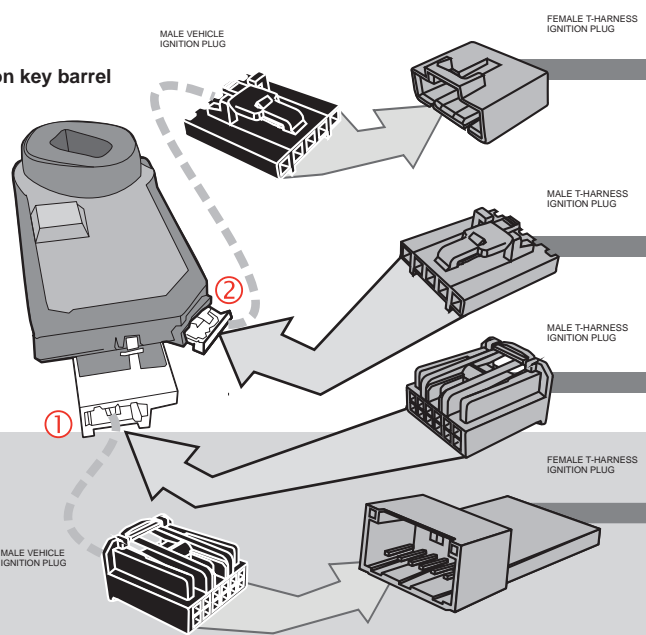


YELLOW	In	A1
(-) Lock	In	A2
(-) Unlock	In	A3
	Out	A4
	Out	A5
ORANGE	In	A6
Hood pin	In	A8
	In	A9
	Out	A10
	Out	A11
	Out	A12
Start/Stop external	In	A13
(-) Parking Lights	Out	A14
(-) Trunk Output	Out	A15
		A16
		A17
		A18
		A19
		A20

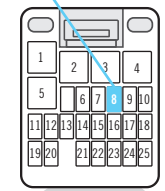


T-HARNESS

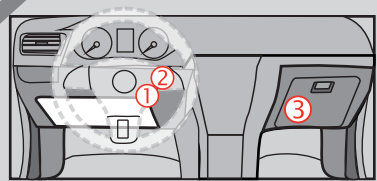
**Ignition key barrel**



A14  
 (-) PARKING LIGHTS  
 Lt. Blue



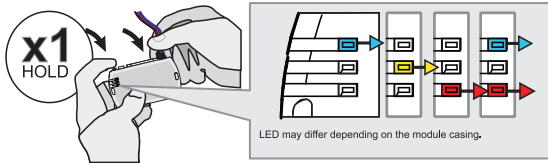
25-Pin Back View White connector.





**KEY BYPASS PROGRAMMING PROCEDURE 1/2**

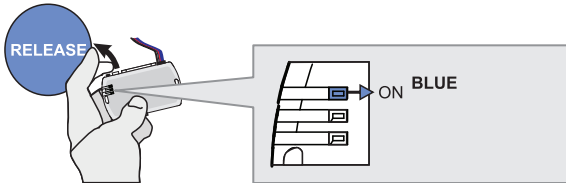
**1**



**Press and hold** the programming button:  
**Connect** the 4-PIN Data-link harness (Black connector).

↳ The Blue, Red, Yellow and Blue & Red LEDs will alternatively illuminate.

**2**

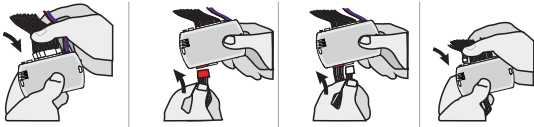


**Release** the programming button when the LED is BLUE.

**Relâchez** le bouton de programmation quand la DEL est BLEU.

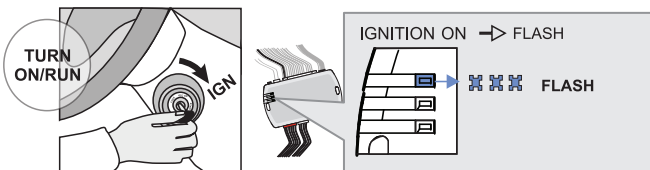
If the LED is not solid BLUE disconnect the 4-Pin connector (Data-Link) and go back to step 1.

**3**



**Insert** the required remaining connectors.

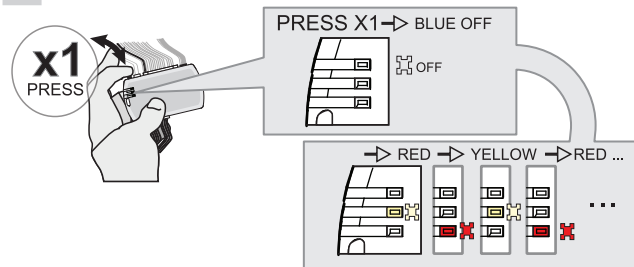
**4**



**Turn** the key to the Ignition ON/RUN position.

↳ The Blue LED will flash rapidly.

**5**

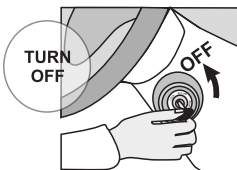


**Press and release** the programming button once (1x).

↳ The Blue LED will turn OFF.

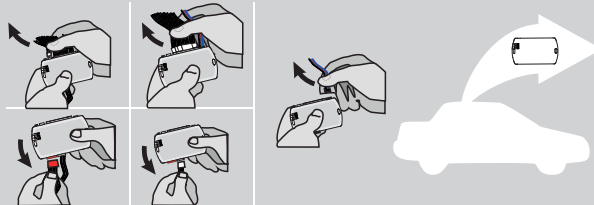
↳ The YELLOW and RED LEDs will alternate..

**6**



**Turn** the key to the OFF position.

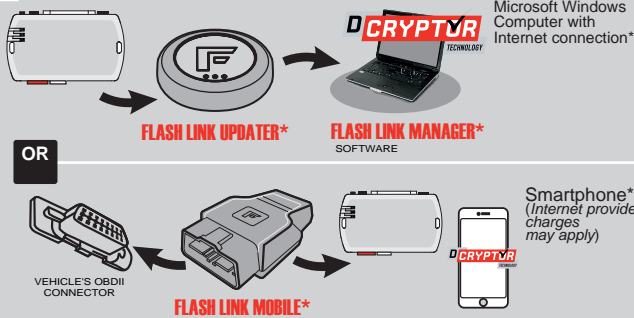
**7**



**Disconnect** all the connectors and after the Data-Link (4-pins) connector.

KEY BYPASS PROGRAMMING PROCEDURE 2/2

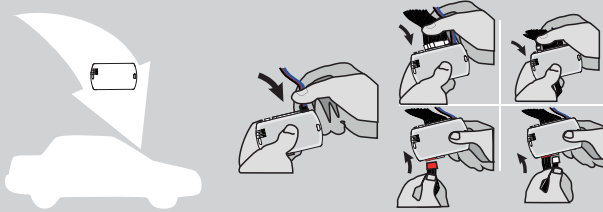
8



Use the tool: **FLASH LINK UPDATER** or **FLASH LINK MOBILE** to visit the DCryptor menu.

\*Parts required (not included)

9



**AFTER DCRYPTOR PROGRAMMING COMPLETED**  
Go back to the vehicle and **reconnect** the 4-Pin (Data-Link) connector and after, all the remaining connector.



The module is now programmed.



**REMOTE STARTER / ALARM VERIFICATION PROCEDURE**

Test the remote starter. Remote start the vehicle.


# THAR-GM4 THARNNESS STAND ALONE INSTALLATION

## ADDENDUM - SUGGESTED WIRING CONFIGURATION



**ONLY COMPATIBLE WITH AUTOMATIC TRANSMISSION VEHICLES.**

VEHICLE	YEARS	Vehicle functions supported in this diagram (functional if equipped)																
		Immobilizer bypass	T-Harness T-Harnais	Lock	Unlock	Arm	Disarm	Trunk (open)	Parking Lights	RAP Disable	Tachometer	Heated Seats	Door Status	Trunk Status	Hood Status	Hand-Brake Status	Foot-Brake Status	PK3, Passlock
<b>CHEVROLET</b>																		
Silverado 1500 Premium Package	2007-2013	•	•	•	•	•	•		•	•	•	•	•	•	•	•	•	•
Silverado 2500	2007-2014	•	•	•	•	•	•		•	•	•	•	•	•	•	•	•	•
Silverado 3500	2007-2014	•	•	•	•	•	•		•	•	•	•	•	•	•	•	•	•
Silverado Hybrid	2007-2013	•	•	•	•	•	•		•	•	•	•	•	•	•	•	•	•
<b>GMC</b>																		
Sierra 1500	2007-2013	•	•	•	•	•	•		•	•	•	•	•	•	•	•	•	•
Sierra 2500	2007-2014	•	•	•	•	•	•		•	•	•	•	•	•	•	•	•	•
Sierra 3500	2007-2014	•	•	•	•	•	•		•	•	•	•	•	•	•	•	•	•



**70.[45]**

GM MINIMUM

To add the firmware version and the options, use the **FLASH LINK UPDATER** or **FLASH LINK MOBILE** tool, sold separately.

<p><b>IF THE VEHICLE IS NOT EQUIPPED WITH FUNCTIONAL HOOD PIN:</b></p>	A11	OFF	Hood trigger (Output Status).
<p><b>Program bypass option:</b></p>	C1		DESCRIPTION
			OEM Remote status (Lock/Unlock) monitoring

**MANDATORY INSTALL**

\*HOOD PIN



**HOOD STATUS:** THE HOOD PIN SWITCH MUST BE INSTALLED IF THE VEHICLE CAN BE REMOTE STARTED WITH THE HOOD OPEN, SET FUNCTION A11 TO OFF.

A11

OFF

**Notice:** the installation of safety elements are mandatory. The hood pin is an essential security element and must be installed.

THIS MODULE MUST BE INSTALLED BY A QUALIFIED TECHNICIAN. A WRONG CONNECTION CAN CAUSE PERMANENT DAMAGE TO THE VEHICLE.

**PARTS REQUIRED (NOT INCLUDED)**


1x **FLASH LINK UPDATER,**  
 1x **FLASH LINK MANAGER**  
 SOFTWARE | PROGRAMME  
 1x Microsoft Windows Computer with Internet connection

**OR**

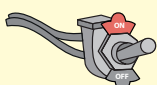
1x **FLASH LINK MOBILE**  
 1x **FLASH LINK MOBILE APP**  
 Smartphone Android or iOS with Internet connection (provider charges may apply).

**MANDATORY**

HOOD PIN



REMOTE START SAFETY OVERRIDE SWITCH


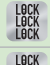





VALET SWITCH


Part #: RSPB available, Sold separately.

**Notice:** the installation of safety elements are mandatory. The hood pin and the valet switch are essential security elements and must be installed.


**STAND ALONE CONFIGURATION**

	Program bypass option	UNIT OPTION	DESCRIPTION
	<b>OEM Remote Stand Alone Remote Starter:</b>	<b>D1.10</b> 	<b>By default, LOCK, LOCK, LOCK</b> Par défaut, VERROUILLE, VERROUILLE, VERROUILLE
		<b>D1.1</b> 	
	<b>Program bypass option with oem remote:</b>	<b>C1</b>	OEM Remote Monitoring
	<b>Program bypass option with RF KIT antenna:</b>	<b>H1 to H6</b>	Supported RF Kits and <b>select RF Kit</b>


**REMOTE STARTER FUNCTIONALITY**



All doors must be closed.

**3X** 

Press the OEM remote's Lock button 3x to remote-start (or remote-stop) the vehicle.




The vehicle will START.

**REMOTE STARTER DIAGNOSTICS**  
MODULE RED LED

<b>x2 flash :</b>	Brake ON
<b>x3 flash :</b>	No tach
<b>x4 flash :</b>	Ignition before start
<b>x5 flash :</b>	Hood Open

**REMOTE STARTER WARNING CARD**



**CUT THIS WARNING CARD AND STICK IT ON A VISIBLE PLACE:**  
 or use the package RSPB, Sold separately.

**WARNING | ATTENTION**

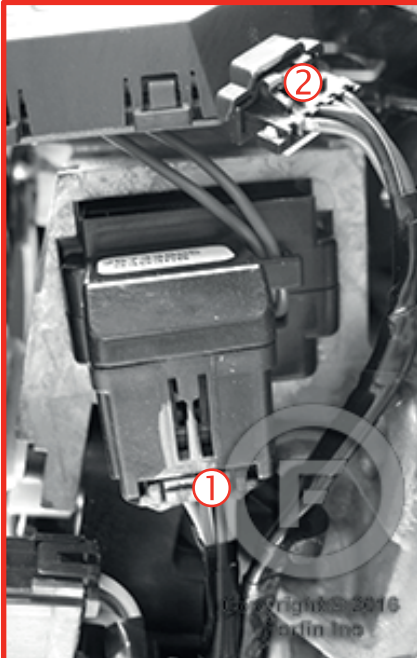


REMOTE STARTER

THE VEHICLE CAN BE STARTED BY EITHER: PRESSING THE LOCK BUTTON ON THE OEM REMOTE 3 TIMES CONSECUTIVELY OR BY A SMARTPHONE. **TURN ON** THE SAFETY SWITCH LOCATED UNDER THE DASHBOARD BEFORE WORKING ON THE VEHICLE.

DESCRIPTION

① ② Ignition Barrel



① Ignition connector\*



② Transponder connector



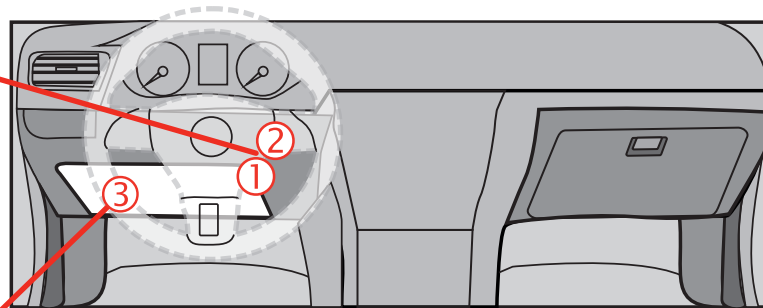
12V BATTERY



**ATTENTION THE T-HARNESS CURRENT IS LIMITED AT 2 AMP MAXIMUM.**

If the parking lights (+) require more than 2Amp. connect the remote-starter's power directly to the vehicles battery with the appropriate fuse.

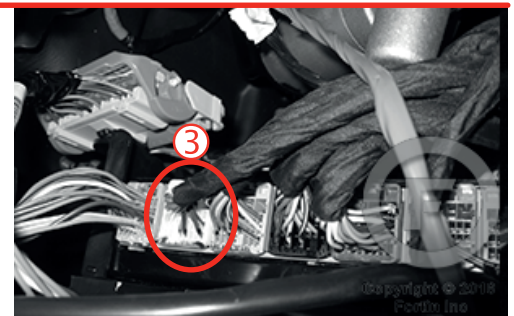
Some remote starters can not be powered through Data-Link. In these cases connect the remote starter's fused 12V power wire directly to the T-Harness.



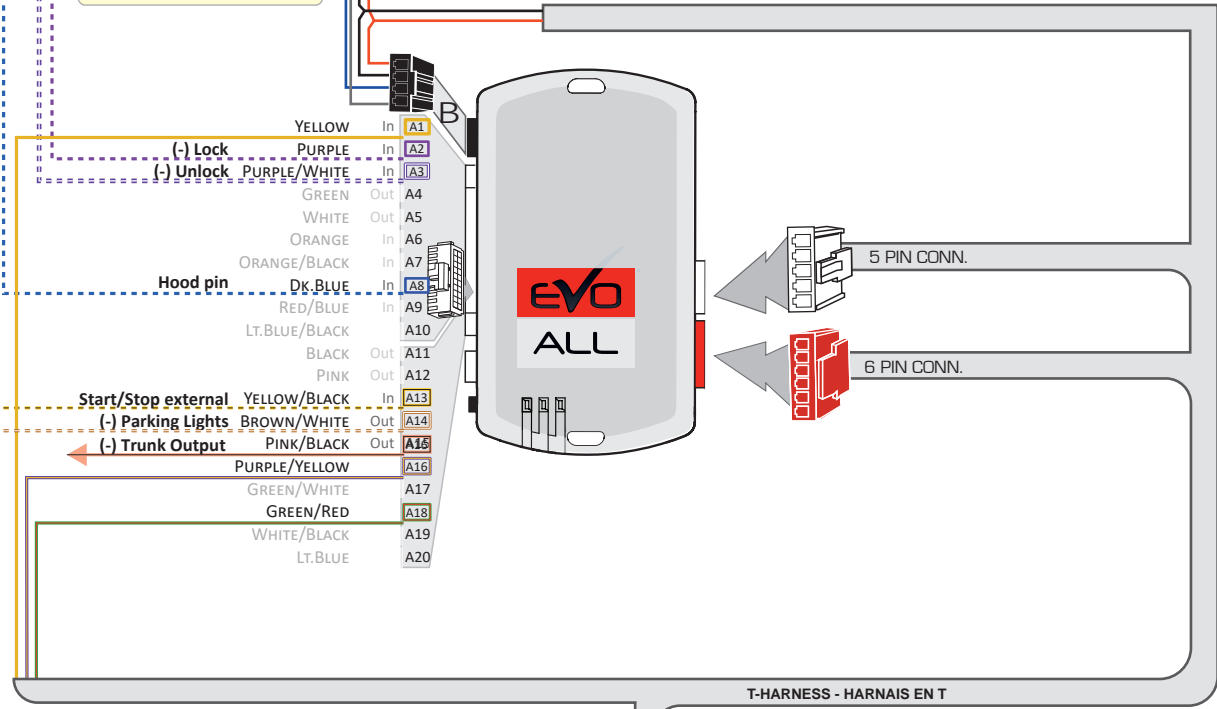
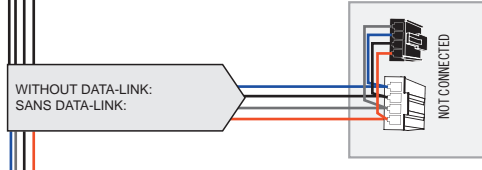
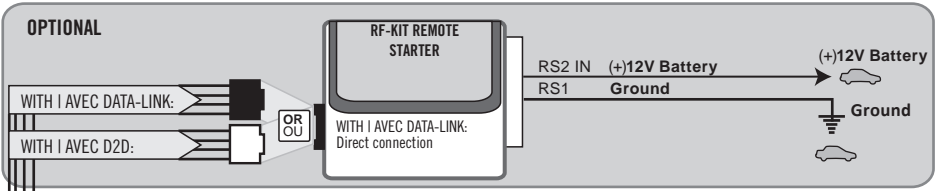
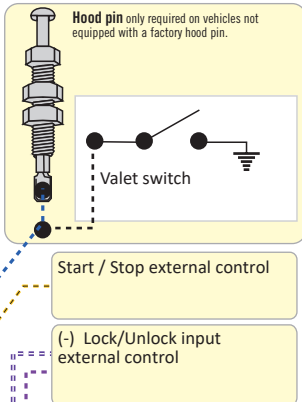
③ BCM Driver's side dash



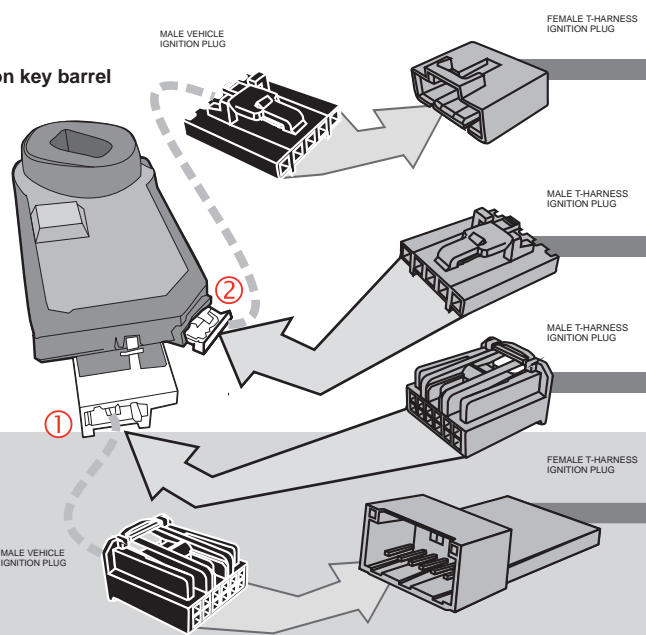
(-) PARKING LIGHTS



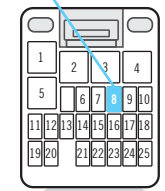
**AUTOMATIC TRANSMISSION WIRING CONNECTION**



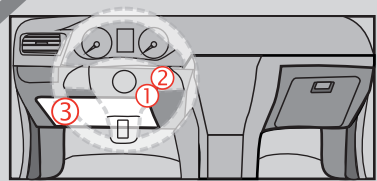
**Ignition key barrel**



A14  
(-)PARKING LIGHTS  
Lt. Blue



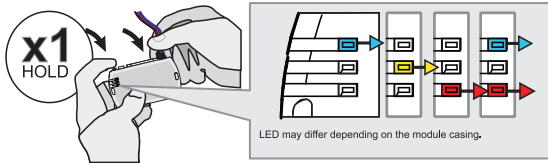
25-Pin Back View White connector.





**KEY BYPASS PROGRAMMING PROCEDURE 1/2 |**

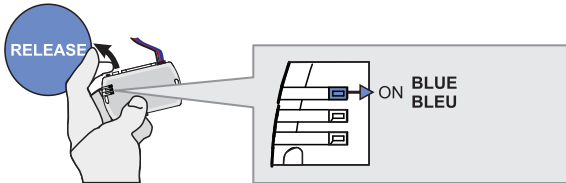
**1**



**Press and hold** the programming button:  
**Connect** the 4-PIN Data-link harness (Black connector).

↳ The Blue, Red, Yellow and Blue & Red LEDs will alternatively illuminate.

**2**

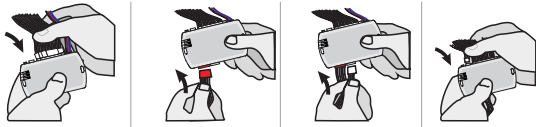


**Release** the programming button when the LED is BLUE.

**Relâchez** le bouton de programmation quand la DEL est BLEU.

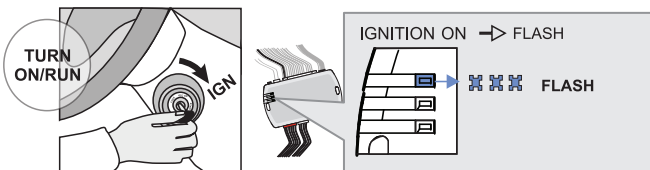
If the LED is not solid BLUE disconnect the 4-Pin connector (Data-Link) and go back to step 1.

**3**



**Insert** the required remaining connectors.

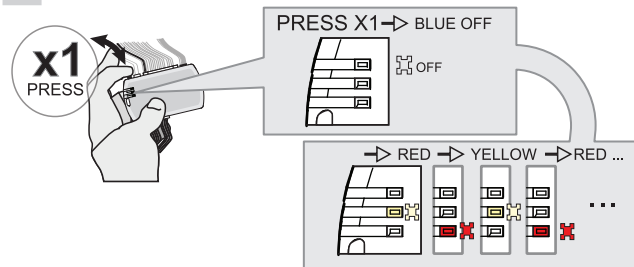
**4**



**Turn** the key to the Ignition ON/RUN position.

↳ The Blue LED will flash rapidly.

**5**

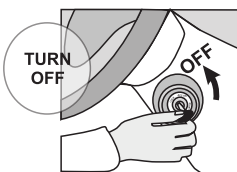


**Press and release** the programming button once (1x).

↳ The Blue LED will turn OFF.

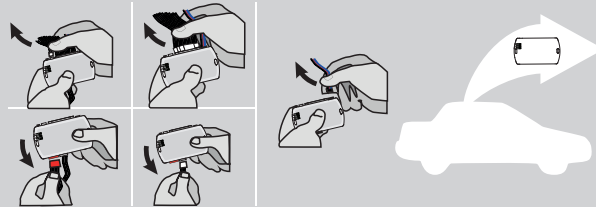
↳ The YELLOW and RED LEDs will alternate..

**6**



**Turn** the key to the OFF position.

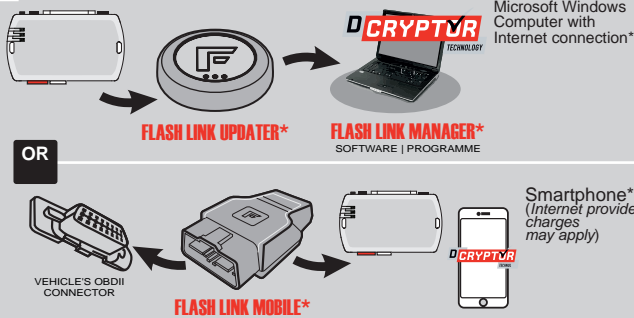
**7**



**Disconnect** all the connectors and after the Data-Link (4-pins) connector.

KEY BYPASS PROGRAMMING PROCEDURE 2/2

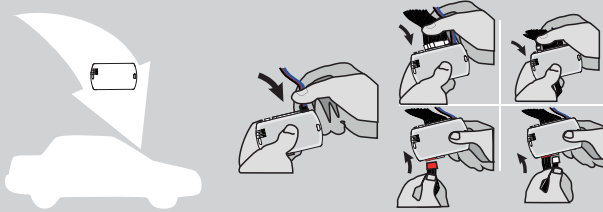
8



Use the tool: **FLASH LINK UPDATER** or **FLASH LINK MOBILE** to visit the DCryptor menu.

\*Parts required (not included)

9



**AFTER DCRYPTOR PROGRAMMING COMPLETED**  
Go back to the vehicle and **reconnect** the 4-Pin (Data-Link) connector and after, all the remaining connector.



The module is now programmed.



**REMOTE STARTER / ALARM VERIFICATION PROCEDURE**

Test the remote starter. Remote start the vehicle.

# THAR-GM4 THARNESSE INSTALLATION

## ADDENDUM - SUGGESTED WIRING CONFIGURATION

VEHICLE	YEARS	Vehicle functions supported in this diagram (functional if equipped)																
		Immobilizer bypass	T-Harness T-Harnais	Lock	Unlock	Arm	Disarm	Parking Lights	RAP Disable	Tachometer	Heated Seats	Door Status	Trunk Status	Hood Status	Hand-Brake Status	Foot-Brake Status	PK3, Passlock	OEM Remote monitoring
<b>CHEVROLET</b>																		
Silverado 1500 Premium Package	2007-2013	•	•	•	•	•	•	•	•	•	•	•	•	•	•	•	•	•
Silverado 2500	2007-2014	•	•	•	•	•	•	•	•	•	•	•	•	•	•	•	•	•
Silverado 3500	2007-2014	•	•	•	•	•	•	•	•	•	•	•	•	•	•	•	•	•
Silverado Hybrid	2007-2013	•	•	•	•	•	•	•	•	•	•	•	•	•	•	•	•	•
<b>GMC</b>																		
Sierra 1500	2007-2013	•	•	•	•	•	•	•	•	•	•	•	•	•	•	•	•	•
Sierra 2500	2007-2014	•	•	•	•	•	•	•	•	•	•	•	•	•	•	•	•	•
Sierra 3500	2007-2014	•	•	•	•	•	•	•	•	•	•	•	•	•	•	•	•	•

**BYPASS FIRMWARE VERSION**

# 70.[39]

GM MINIMUM

To add the firmware version and the options, use the **FLASH LINK UPDATER** or **FLASH LINK MOBILE** tool, sold separately.

	Program remote starter option:	FUNCTION	MODE	DESCRIPTION
		<b>32</b>	<b>3</b>	DK.Blue (GWR) Shut Down After
	<b>Program remote starter option for R.S. OEM REMOTE STAND ALONE:</b>	<b>38</b>	<b>2</b>	Enable Press 3x Lock to remote start with the OEM remote.

	Program bypass option:	UNIT OPTION	DESCRIPTION
		<b>C1</b>	OEM Remote status (Lock/Unlock) monitoring
	<b>Program bypass option (Vehicle hybrid only):</b>	<b>D4</b>	Hybrid mode (Vehicle hybrid only)

### MANDATORY INSTALL

\* HOOD PIN



**HOOD STATUS:** THE HOOD PIN SWITCH (INCLUDED) MUST BE INSTALLED IF THE VEHICLE CAN BE REMOTE STARTED WITH THE HOOD OPEN, SET FUNCTION A11 TO OFF.

**A11**

OFF

### SECURITY STICKER



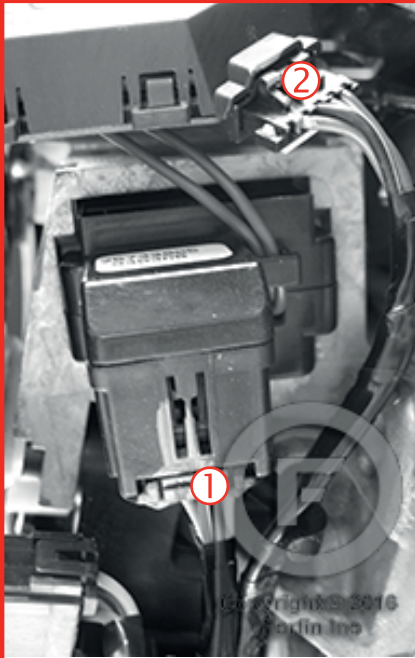
Included

**Notice:** the installation of safety elements are mandatory. The hood pin and the sticker are essential security elements and must be installed.

THIS MODULE MUST BE INSTALLED BY A QUALIFIED TECHNICIAN. A WRONG CONNECTION CAN CAUSE PERMANENT DAMAGE TO THE VEHICLE.

DESCRIPTION

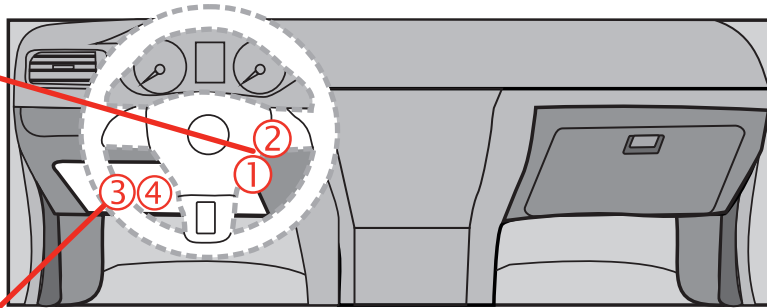
① ② Ignition Barrel



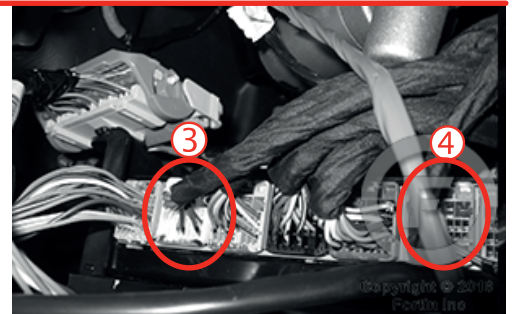
① Ignition connector\*



② Transponder connector

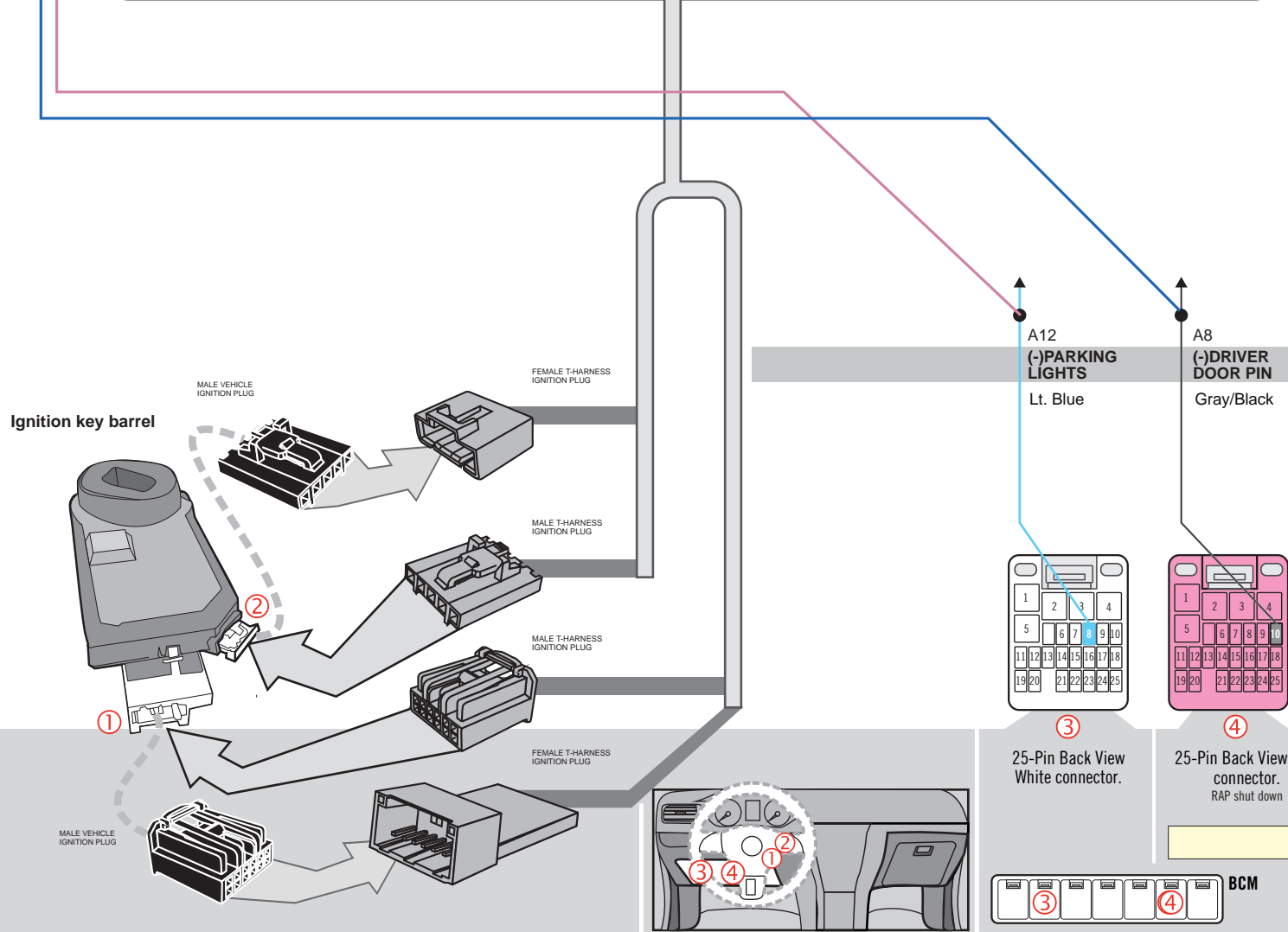
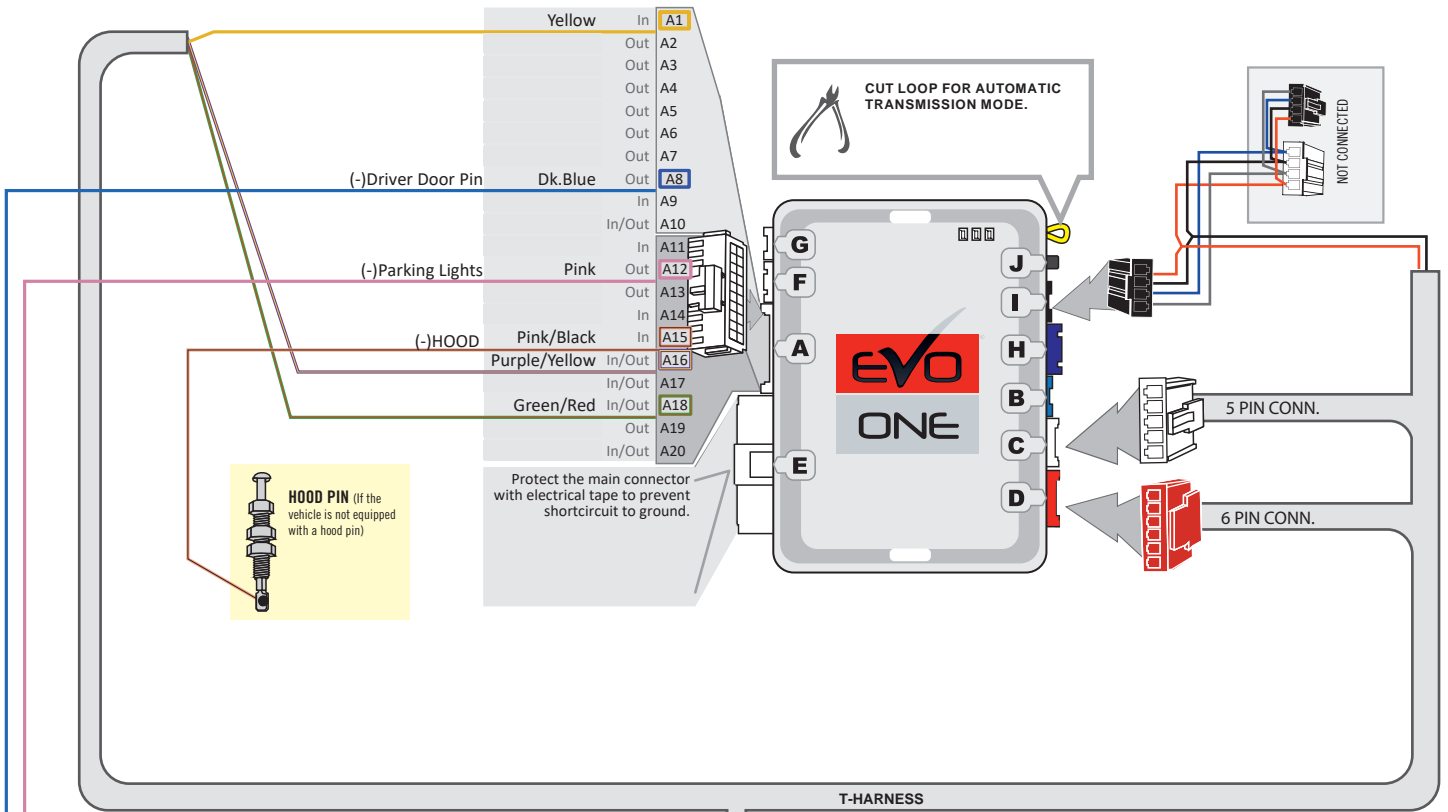


③ ④ BCM Driver's side dash



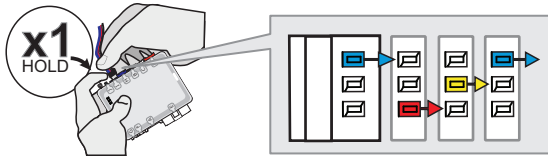
(-)PARKING LIGHTS

WIRING CONNECTION



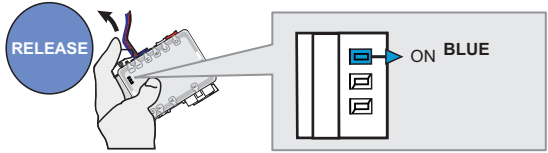
**KEY BYPASS PROGRAMMING PROCEDURE |**

1



**Press and hold** the programming button:  
Insert the 4-Pin DATA-LINK connector.

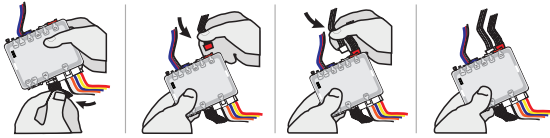
2



**Release** the programming button when the BLUE LED is ON.

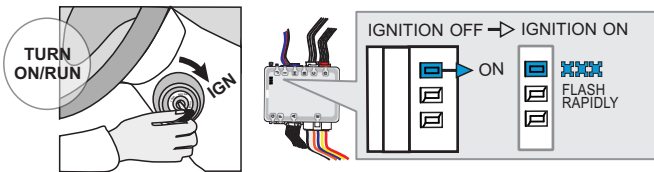
If the BLUE LED is not ON solid **disconnect** the 4-Pin DATA-LINK connector and **go back** to step 1.

3



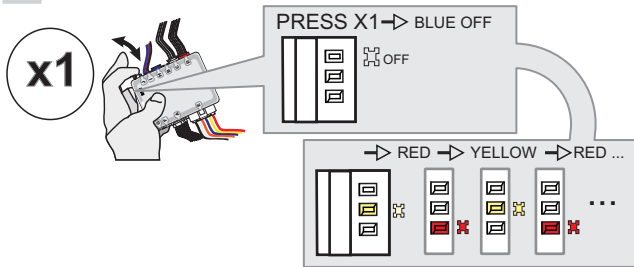
Insert the required remaining connectors.

4



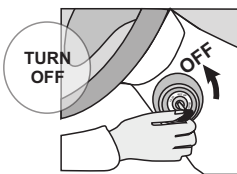
**Turn** the Ignition to the ON/RUN position.  
↳ The BLUE LED will flash rapidly.

5



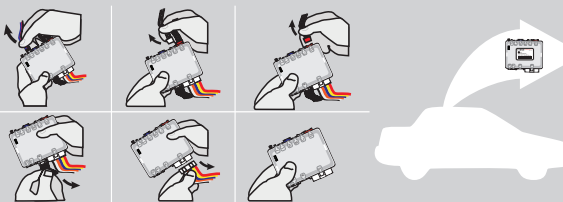
**Press and release** the programming button once (1x).  
↳ The Blue LED will turn OFF.  
↳ The YELLOW & RED LEDs will alternate..

6



**Turn** the Ignition to the OFF position.

7

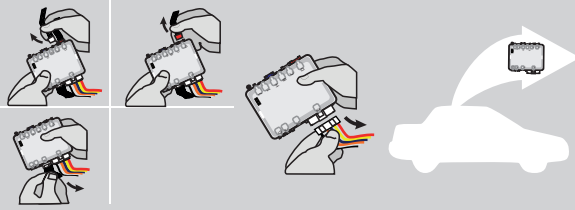


**Disconnect** all EVO-ONE connectors.



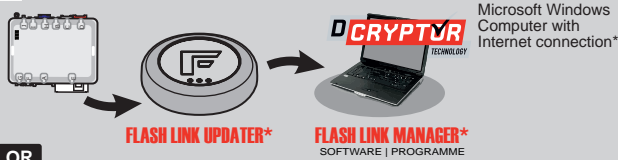
REMOTE STARTER FUNCTIONALITY |

8

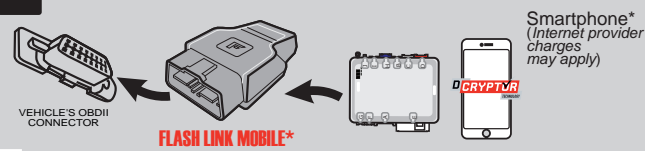


**Disconnect** all connectors and after the 6-Pin (Main-Harness) or the 4-Pin Data-link connector.

9



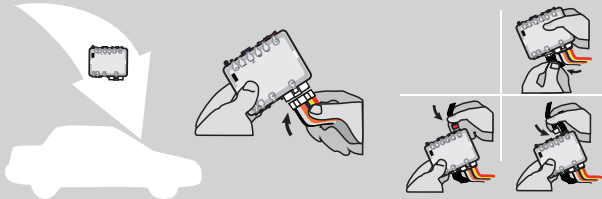
OR



Use the tool: **FLASH LINK UPDATER** or **FLASH LINK MOBILE** to visit the DCryptor menu.

\*Parts required (not included)

10



**AFTER DCRYPTOR PROGRAMMING COMPLETED**  
Go back to the vehicle and **reconnect** the 6-Pin (Main-Harness) or the 4-pins (Data-Link) connector and after all the remaining connector.



The module is now programmed.



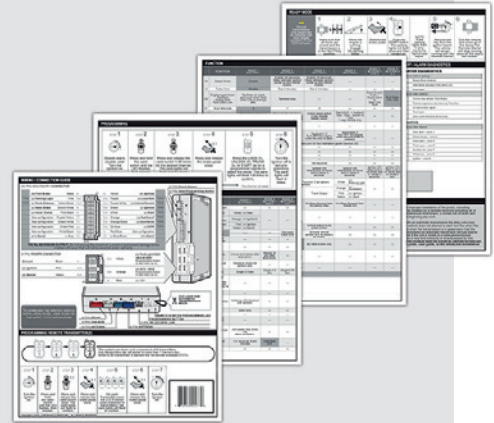
REMOTE STARTER / ALARM VERIFICATION PROCEDURE

Test the remote starter. Remote start the vehicle.

REMOTE STARTER PROGRAMMING PROCEDURE |



REFER TO THE **QUICK INSTALL GUIDE** INCLUDED WITH THE MODULE FOR THE REMOTE STARTER PROGRAMMING.



# THAR-GM4 THARNNESS INSTALLATION

## ADDENDUM - SUGGESTED WIRING CONFIGURATION

VEHICLE	YEARS	Vehicle functions supported in this diagram (functional if equipped)																	
		Immobilizer bypass	T-Harness T-Harnais	Lock	Unlock	Arm	Disarm	Trunk (open)	Parking Lights	RAP Disable	Tachometer	Heated Seats	Door Status	Trunk Status	Hood Status	Hand-Brake Status	Foot-Brake Status	PK3, Passlock	OEM Remote monitoring
<b>CHEVROLET</b>																			
Express Van	2008-2017	•	•	•	•	•	•	•	•	•	•	•	•	•	•	•	•	•	•
Express 2500	2008-2016	•	•	•	•	•	•	•	•	•	•	•	•	•	•	•	•	•	•
Express 3500	2008-2016	•	•	•	•	•	•	•	•	•	•	•	•	•	•	•	•	•	•
<b>GMC</b>																			
Savana	2008-2020	•	•	•	•	•	•	•	•	•	•	•	•	•	•	•	•	•	•

**BYPASS FIRMWARE VERSION**

**70.[39]**

GM MINIMUM

To add the firmware version and the options, use the **FLASH LINK UPDATER** or **FLASH LINK MOBILE** tool, sold separately.

	<b>Program remote starter option:</b>	FUNCTION	MODE	DESCRIPTION
		<b>32</b>	<b>3</b>	DK.Blue (GWR) Shut Down After

	<b>Program remote starter option for R.S. OEM REMOTE STAND ALONE:</b>	FUNCTION	MODE	DESCRIPTION
		<b>38</b>	<b>2</b>	Enable Press 3x Lock to remote start with the OEM remote.

	<b>Program bypass option:</b>	UNIT OPTION	DESCRIPTION
		<b>C1</b>	OEM Remote status (Lock/Unlock) monitoring

	<b>Program bypass option (Vehicle hybrid only):</b>	UNIT OPTION	DESCRIPTION
		<b>D4</b>	Hybrid mode (Vehicle hybrid only)

### MANDATORY INSTALL

**\* HOOD PIN**



**HOOD STATUS:** THE HOOD PIN SWITCH (INCLUDED) MUST BE INSTALLED IF THE VEHICLE CAN BE REMOTE STARTED WITH THE HOOD OPEN, SET FUNCTION A11 TO OFF.

**A11**

OFF  
NON

#### SECURITY STICKER



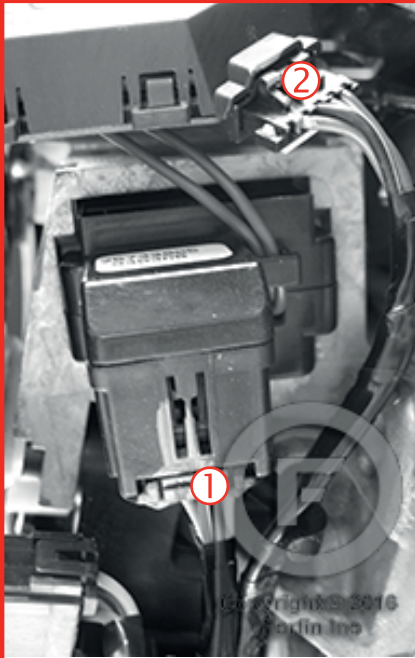
Included

**Notice:** the installation of safety elements are mandatory. The hood pin and the sticker are essential security elements and must be installed.

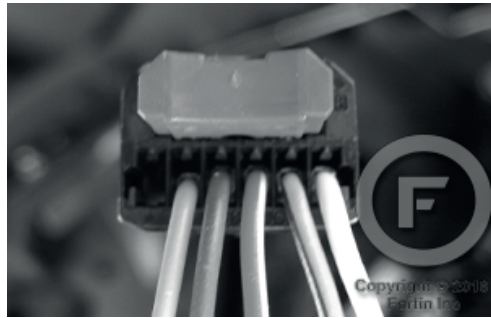
THIS MODULE MUST BE INSTALLED BY A QUALIFIED TECHNICIAN. A WRONG CONNECTION CAN CAUSE PERMANENT DAMAGE TO THE VEHICLE.

DESCRIPTION

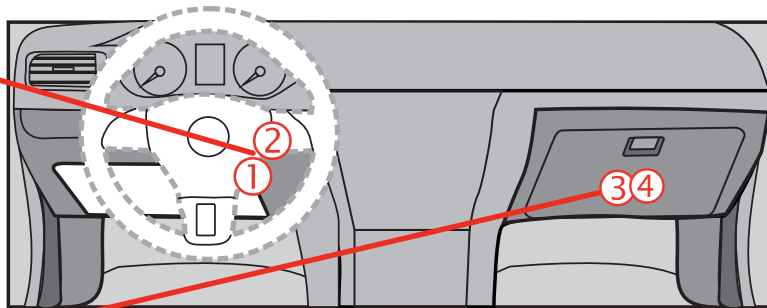
① ② Ignition Barrel



① Ignition connector\*



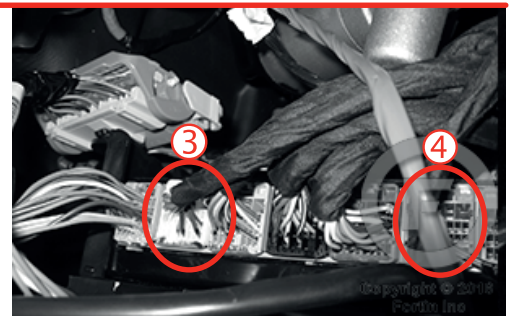
② Transponder connector



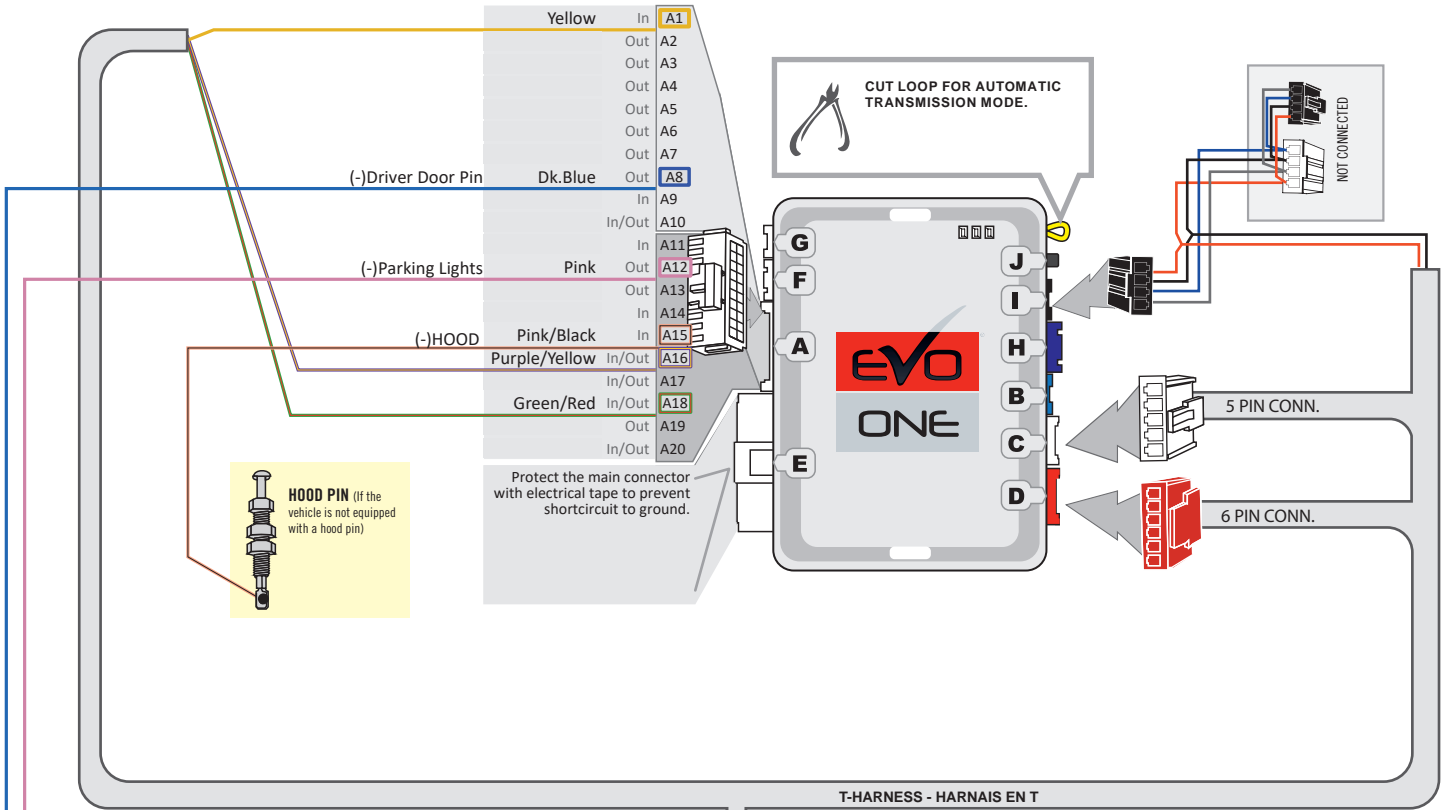
③ BCM Passenger's side dash



(-)PARKING LIGHTS

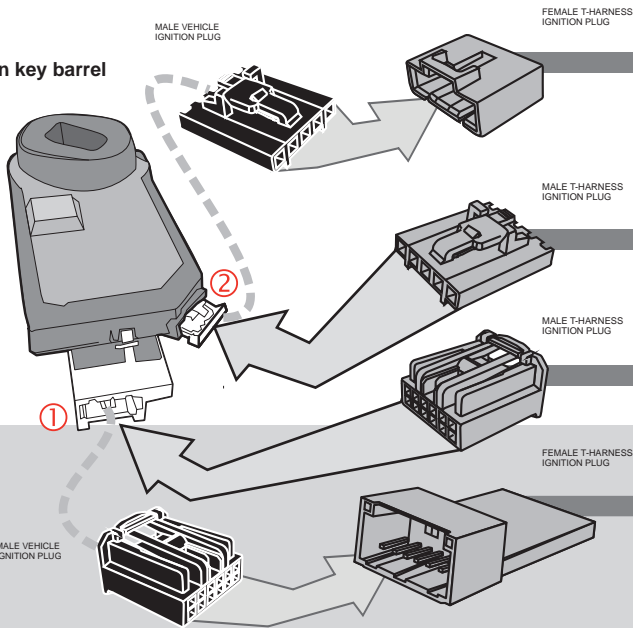


WIRING CONNECTION



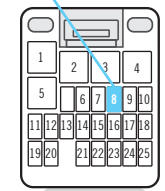
T-HARNESS - HARNAIS ENT

Ignition key barrel



A12 (-)PARKING LIGHTS  
Lt. Blue

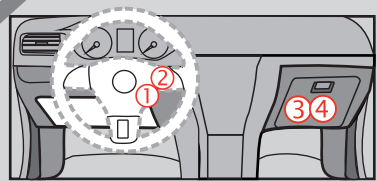
A8 (-)DRIVER DOOR PIN  
Gray/Black



③ 25-Pin Back View White connector.



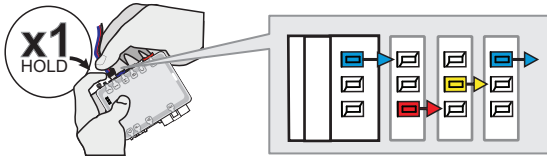
④ 25-Pin Back View Pink connector. RAP shut down



BCM

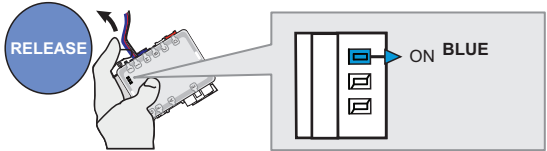
**KEY BYPASS PROGRAMMING PROCEDURE |**

1



**Press and hold** the programming button:  
Insert the 4-Pin DATA-LINK connector.

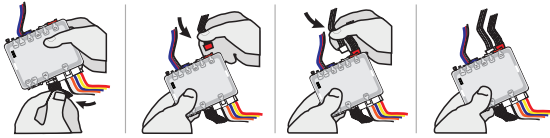
2



**Release** the programming button when the BLUE LED is ON.

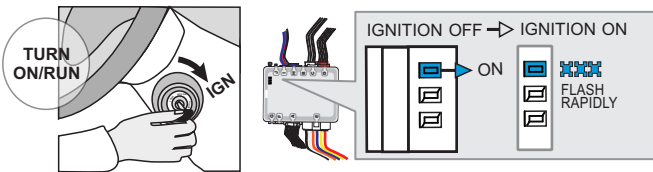
If the BLUE LED is not ON solid **disconnect** the 4-Pin DATA-LINK connector and **go back** to step 1.

3



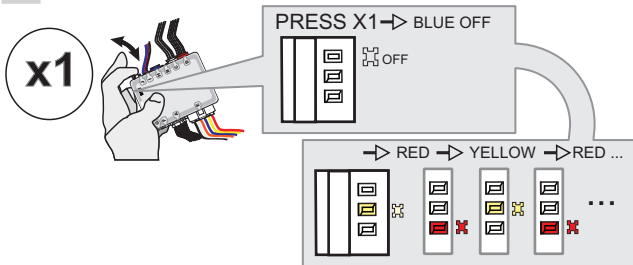
Insert the required remaining connectors.

4



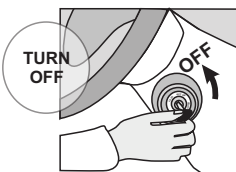
**Turn** the Ignition to the ON/RUN position.  
↳ The BLUE LED will flash rapidly.

5



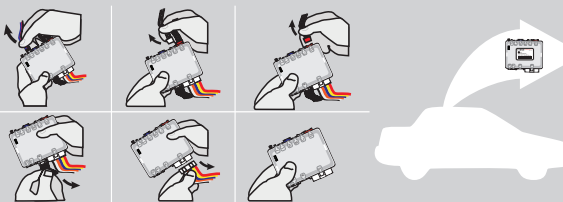
**Press and release** the programming button once (1x).  
↳ The Blue LED will turn OFF.  
↳ The YELLOW & RED LEDs will alternate..

6



**Turn** the Ignition to the OFF position.

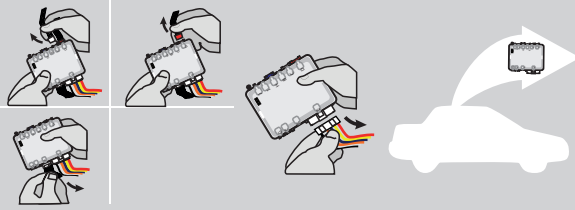
7



**Disconnect** all EVO-ONE connectors.

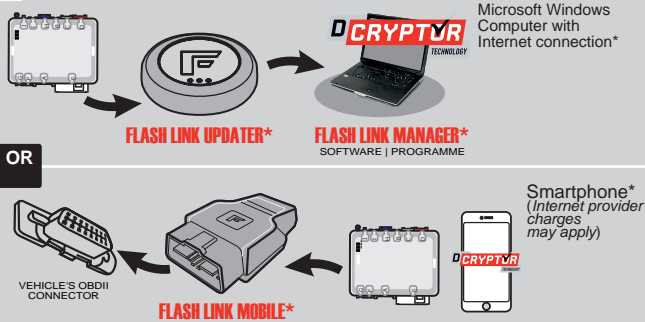
REMOTE STARTER FUNCTIONALITY |

8



**Disconnect** all connectors and after the 6-Pin (Main-Harness) or the 4-Pin Data-link connector.

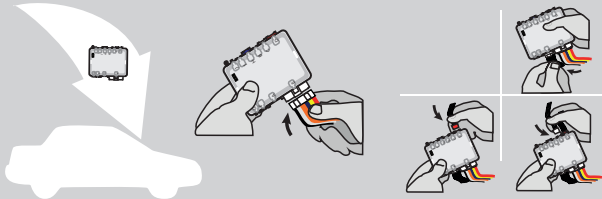
9



Use the tool:  
**FLASH LINK UPDATER** or  
**FLASH LINK MOBILE**  
to visit the DCryptor menu.

\*Parts required (not included)

10



**AFTER DCRYPTOR PROGRAMMING COMPLETED**  
Go back to the vehicle and **reconnect** the 6-Pin (Main-Harness) or the 4-pins (Data-Link) connector and after all the remaining connector.



The module is now programmed.



**REMOTE STARTER / ALARM VERIFICATION PROCEDURE**

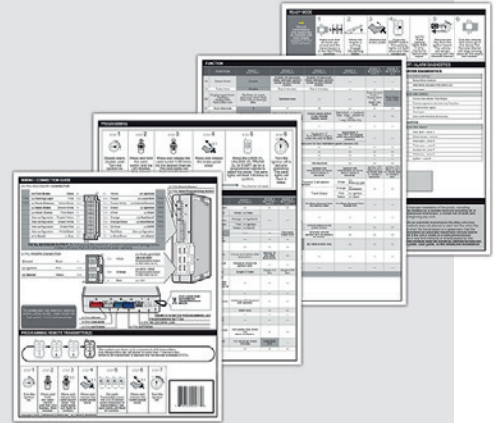
Test the remote starter. Remote start the vehicle.



REMOTE STARTER PROGRAMMING PROCEDURE



REFER TO THE **QUICK INSTALL GUIDE** INCLUDED WITH THE MODULE FOR THE REMOTE STARTER PROGRAMMING.



# THAR-GM4 THARNESSE INSTALLATION

## ADDENDUM - SUGGESTED WIRING CONFIGURATION

VEHICLE	YEARS	Vehicle functions supported in this diagram (functional if equipped)															
		Immobilizer bypass	T-Harness T-Harnais	Lock	Unlock	Arm	Disarm	Trunk (open)	Tachometer	Heated Seats	Door Status	Trunk Status	Hood Status	Hand-Brake Status	Foot-Brake Status	PK3, Passlock	OEM Remote monitoring
<b>CADILLAC</b>																	
Escalade	2007-2014	•	•	•	•	•	•	•	•	•	•	•	•	•	•	•	•
<b>CHEVROLET</b>																	
Avalanche	2007-2013	•	•	•	•	•	•	•	•	•	•	•	•	•	•	•	•
Silverado 1500	2007-2013	•	•	•	•	•	•	•	•	•	•	•	•	•	•	•	•
Silverado 2500 Premium Package	2007-2014	•	•	•	•	•	•	•	•	•	•	•	•	•	•	•	•
Silverado 3500 Premium Package	2007-2014	•	•	•	•	•	•	•	•	•	•	•	•	•	•	•	•
Silverado Hybrid Premium Package	2007-2013	•	•	•	•	•	•	•	•	•	•	•	•	•	•	•	•
Suburban	2007-2014	•	•	•	•	•	•	•	•	•	•	•	•	•	•	•	•
Tahoe	2007-2014	•	•	•	•	•	•	•	•	•	•	•	•	•	•	•	•
<b>GMC</b>																	
Sierra 1500 Premium Package	2007-2013	•	•	•	•	•	•	•	•	•	•	•	•	•	•	•	•
Sierra 2500 Premium Package	2007-2014	•	•	•	•	•	•	•	•	•	•	•	•	•	•	•	•
Sierra 3500 Premium Package	2007-2014	•	•	•	•	•	•	•	•	•	•	•	•	•	•	•	•
Sierra HD	2007-2013	•	•	•	•	•	•	•	•	•	•	•	•	•	•	•	•
Yukon	2007-2014	•	•	•	•	•	•	•	•	•	•	•	•	•	•	•	•

**BYPASS FIRMWARE VERSION**

70.[31]

GM    MINIMUM

		FUNCTION	MODE	DESCRIPTION
	<b>Program remote starter option for R.S. OEM REMOTE STAND ALONE:</b>	<b>38</b>	<b>2</b>	Enable Press 3x Lock to remote start with the OEM remote.

		UNIT OPTION	DESCRIPTION
	<b>Program bypass option:</b>	<b>C1</b>	OEM Remote status (Lock/Unlock) monitoring

		UNIT OPTION	DESCRIPTION
	<b>Program bypass option (Vehicle hybrid only):</b>	<b>D4</b>	Hybrid mode (Vehicle hybrid only)



**Parts required** (Not included)



**FLASH LINK UPDATER**

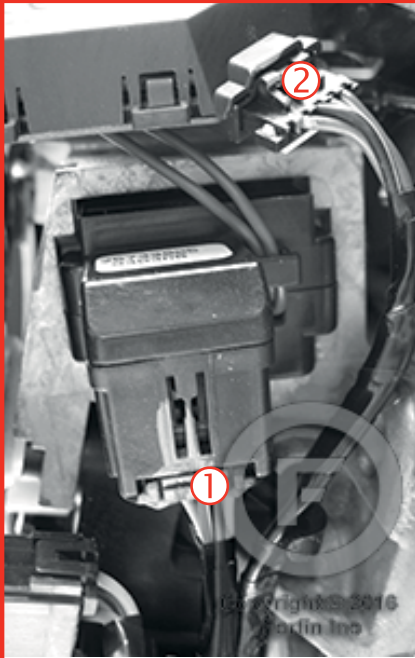


Microsoft Windows Computer & Internet connection



DESCRIPTION

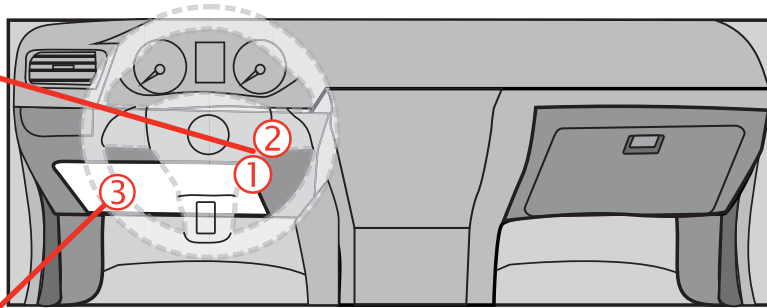
① ② Ignition Barrel



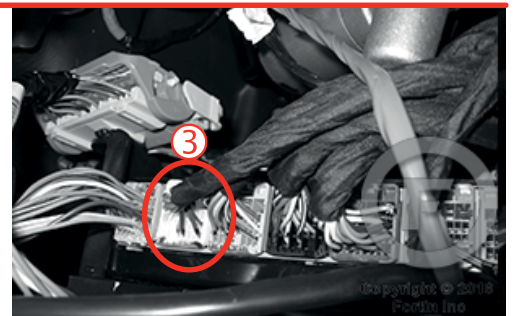
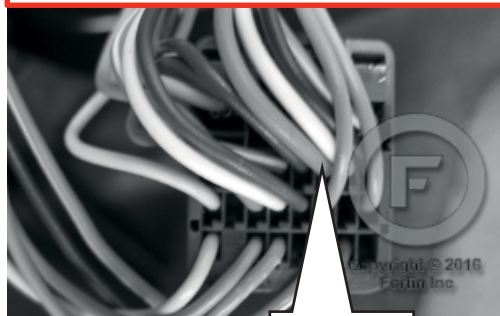
① Ignition connector\*



② Transponder connector

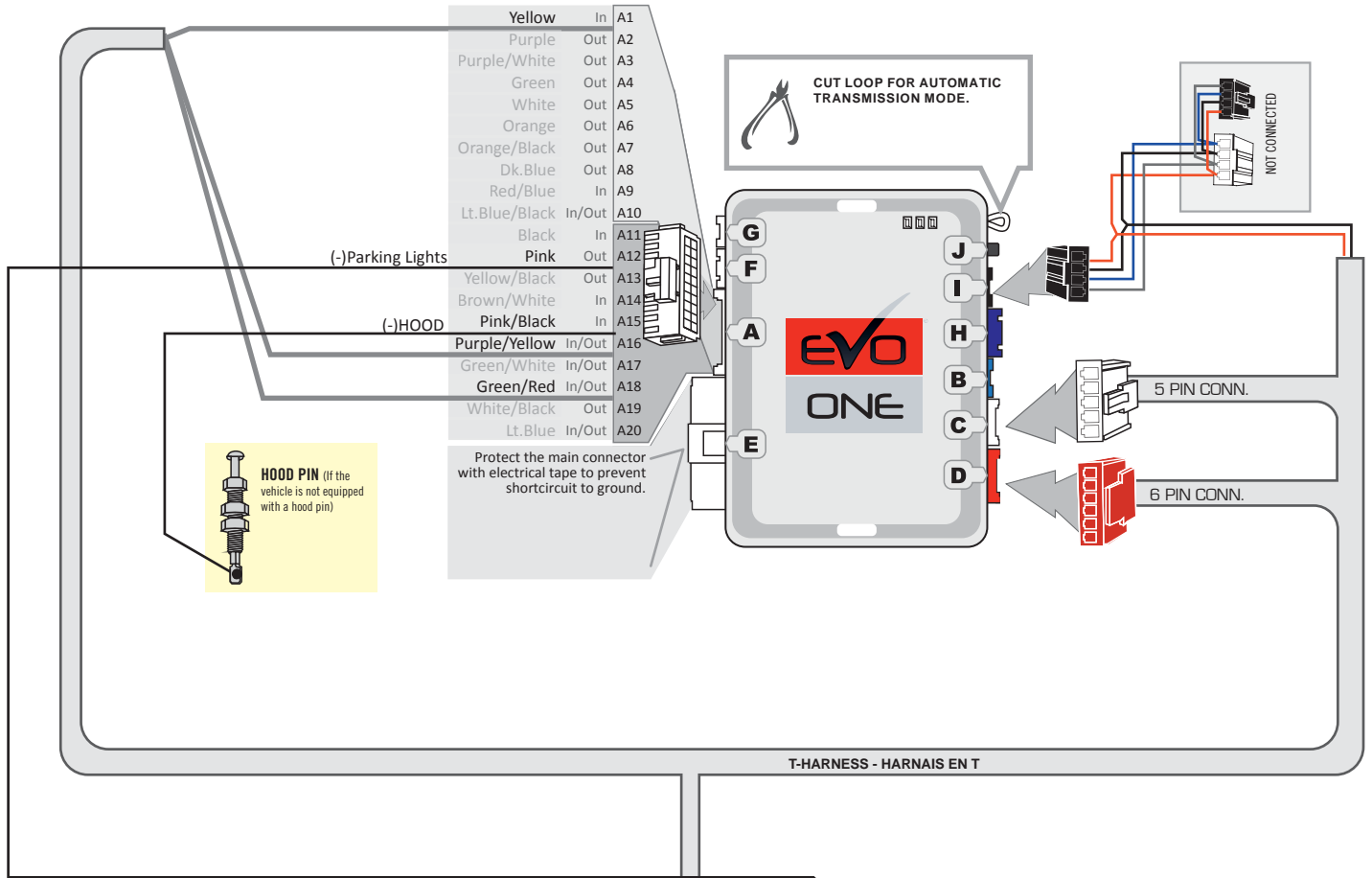


③ BCM Driver's side dash



(-)PARKING LIGHTS

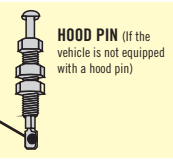
WIRING CONNECTION



Yellow	In	A1
Purple	Out	A2
Purple/White	Out	A3
Green	Out	A4
White	Out	A5
Orange	Out	A6
Orange/Black	Out	A7
Dk.Blue	Out	A8
Red/Blue	In	A9
Lt.Blue/Black	In/Out	A10
Black	In	A11
Pink	Out	A12
Yellow/Black	Out	A13
Brown/White	In	A14
Pink/Black	In	A15
Purple/Yellow	In/Out	A16
Green/White	In/Out	A17
Green/Red	In/Out	A18
White/Black	Out	A19
Lt.Blue	In/Out	A20

(-)Parking Lights

(-)HOOD



Protect the main connector with electrical tape to prevent shortcircuit to ground.

CUT LOOP FOR AUTOMATIC TRANSMISSION MODE.

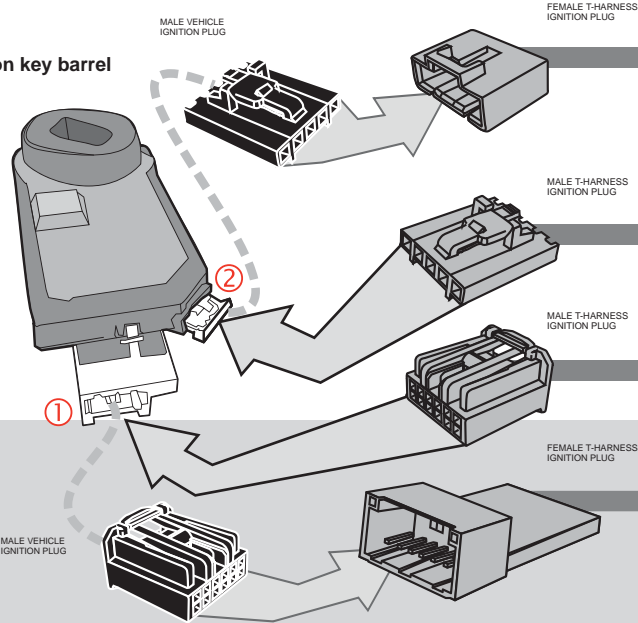
NOT CONNECTED

5 PIN CONN.

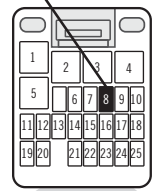
6 PIN CONN.

T-HARNESS - HARNAIS ENT

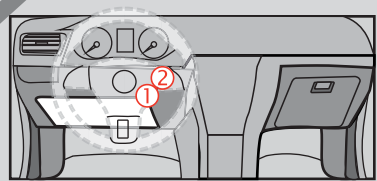
Ignition key barrel



A12  
(-)PARKING LIGHTS  
Lt.Blue  
Pin#8

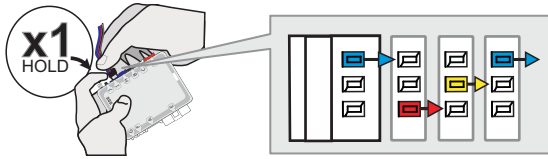


25-Pin Back View White connector.



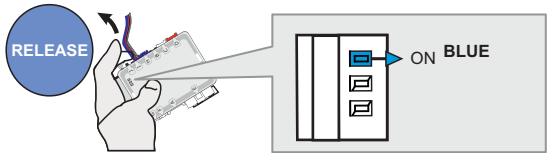
**KEY BYPASS PROGRAMMING PROCEDURE |**

**1**



**Press and hold** the programming button:  
**Insert** the 4-Pin DATA-LINK connector.

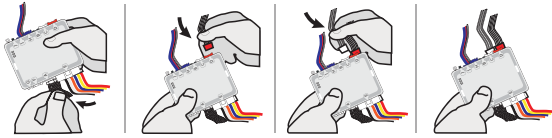
**2**



**Release** the programming button when the BLUE LED is ON.

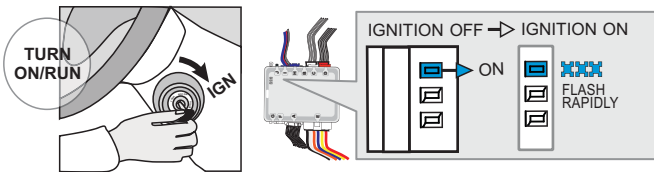
If the BLUE LED is not ON solid **disconnect** the 4-Pin DATA-LINK connector and **go back** to step 1.

**3**



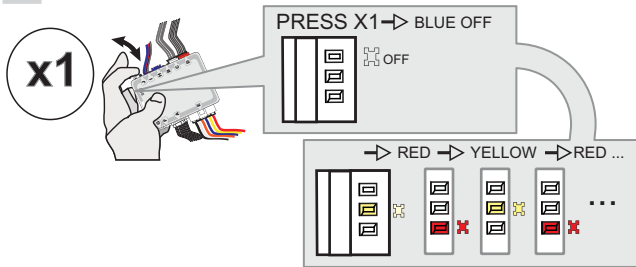
**Insert** the required remaining connectors.

**4**



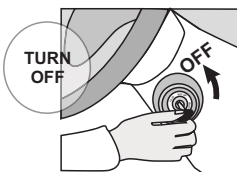
**Turn** the Ignition to the ON/RUN position.  
 ↳ The BLUE LED will flash rapidly.

**5**



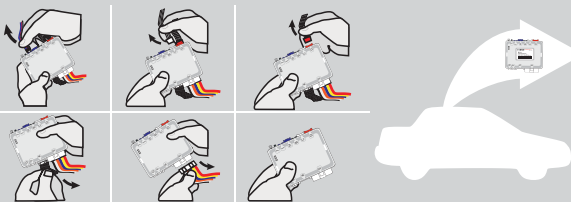
**Press and release** the programming button once (1x).  
 ↳ The Blue LED will turn OFF.  
 ↳ The YELLOW & RED LEDs will alternate..

**6**



**Turn** the Ignition to the OFF position.

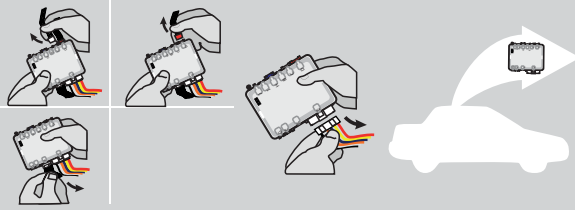
**7**



**Disconnect** all EVO-ONE connectors.

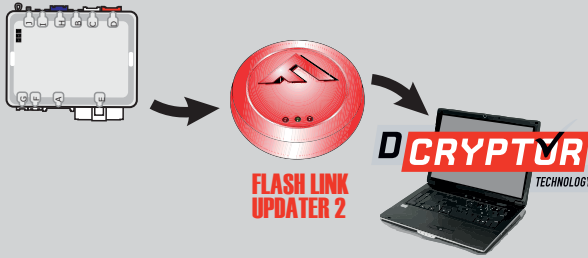
REMOTE STARTER FUNCTIONALITY |

8



**Disconnect** all connectors and after the 6-Pin (Main-Harness) connector.

9



**Connect** the module to the FLASH LINK UPDATER 2 and visit the DCryptor menu in the Flash-Link Manager.

Parts required (not included)  
Pièces requises (non incluses)



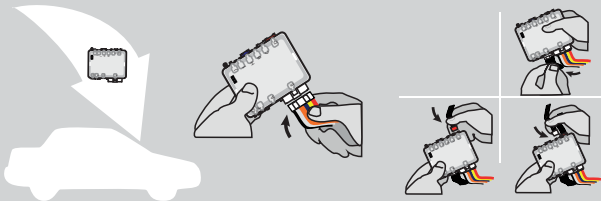
**FLASH LINK UPDATER 2**

**FLASH LINK MANAGER**  
SOFTWARE | PROGRAMME



Microsoft Windows  
Computer with

10



**AFTER DCRYPTOR PROGRAMMING COMPLETED**  
**Go** back to the vehicle and **reconnect** the 6-Pin (Main-Harness) connector and after all the remaining connector.



*The module is now programmed.*



**REMOTE STARTER / ALARM VERIFICATION PROCEDURE**

Test the remote starter. Remote start the vehicle.



REFER TO THE **QUICK INSTALL GUIDE** INCLUDED WITH THE MODULE FOR THE REMOTE STARTER PROGRAMMING.

