

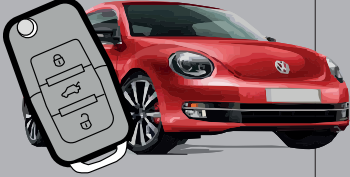
# THAR-VW3 & TB-VW STAND ALONE INSTALLATION

ADDENDUM - SUGGESTED WIRING CONFIGURATION



**ONLY COMPATIBLE WITH AUTOMATIC TRANSMISSION VEHICLES.**

Vehicle functions supported in this diagram (functional if equipped) |

VEHICLE	YEARS	Immobilizer bypass with TB-VW (Sold separately)	T-Harness	Lock	Unlock	Arm	Disarm	Tachometer	Trunk - open	Door Status	Trunk Status	Hood Status *	Hand-Brake Status	Foot-Brake Status	OEM Remote monitoring
 VOLKSWAGEN Beetle Automatic transmission	2012-2015	•	•	•	•	•	•	•	•	•	•	•	•	•	•




FIRMWARE VERSION

**75.[38]**

VW MINIMUM

To add the firmware version and the options, use the **FLASH LINK UPDATER** or **FLASH LINK MOBILE** tool, sold separately.

	UNIT OPTION		DESCRIPTION
 <p><b>Program bypass option:</b></p>	<b>C1</b>		OEM Remote status (Lock/Unlock) monitoring
	<b>A5</b>	<b>OFF</b>	Analog Door lock control
	<b>A6</b>	<b>OFF</b>	Analog Door lock control
<p><b>IF THE VEHICLE IS NOT EQUIPPED WITH FUNCTIONAL HOOD PIN:</b></p>	<b>A11</b>	<b>OFF</b>	Hood trigger (Output Status).



**Parts required (Not included)**

- 1x TB-VW
- 1x THAR-VW3
- 2x Diodes (if the brakes must be pressed)

**MANDATORY INSTALL I**

\*HOOD PIN



**HOOD STATUS:** THE HOOD PIN SWITCH MUST BE INSTALLED IF THE VEHICLE CAN BE REMOTE STARTED WITH THE HOOD OPEN, SET FUNCTION **A11** TO OFF.

<b>A11</b>	<b>OFF</b>
------------	------------

**Notice:** the installation of safety elements are mandatory. The hood pin is an essential security element and must be installed.

THIS MODULE MUST BE INSTALLED BY A QUALIFIED TECHNICIAN. A WRONG CONNECTION CAN CAUSE PERMANENT DAMAGE TO THE VEHICLE.

**PARTS REQUIRED (NOT INCLUDED) |**

1x **FLASH LINK UPDATER,**  
 1x **FLASH LINK MANAGER**  
SOFTWARE |  
 1x Microsoft Windows Computer with Internet connection

**OR**

1x **FLASH LINK MOBILE**  
 1x **FLASH LINK MOBILE APP**  
Smartphone Android or iOS with Internet connection (provider charges may apply).

**MANDATORY |**

HOOD PIN REMOTE START SAFETY OVERRIDE SWITCH

CONTACT VALET SWITCH

Part #: RSPB available, Sold separately.

**Notice:** the installation of safety elements are mandatory. The hood pin and the valet switch are essential security elements and must be installed.

**STAND ALONE CONFIGURATION |**

	Program bypass option	UNIT OPTION	DESCRIPTION
	<b>OEM Remote Stand Alone Remote Starter:</b>	<b>D1.10</b>	<b>By default, LOCK, LOCK, LOCK</b>
		<b>D1.1</b>	LOCK, UNLOCK, LOCK
	<b>Program bypass option with oem remote:</b>	<b>C1</b>	OEM Remote Monitoring
	<b>Program bypass option with RF KIT antenna:</b>	<b>H1 to H6</b>	Supported RF Kits and <b>select RF Kit</b>
		<b>H1 à H6</b>	

**REMOTE STARTER FUNCTIONALITY**

All doors must be closed.

**3X**

Press the OEM remote's Lock button 3x to remote-start (or remote-stop) the vehicle.

The vehicle will START.

**REMOTE STARTER DIAGNOSTICS**  
MODULE RED LED

<b>x2 flash :</b>	Brake ON
<b>x3 flash :</b>	No tach
<b>x4 flash :</b>	Ignition before start
<b>x5 flash :</b>	Hood Open

**REMOTE STARTER WARNING CARD**

**CUT THIS WARNING CARD AND STICK IT ON A VISIBLE PLACE:**  
 or use the package RSPB, Sold separately.

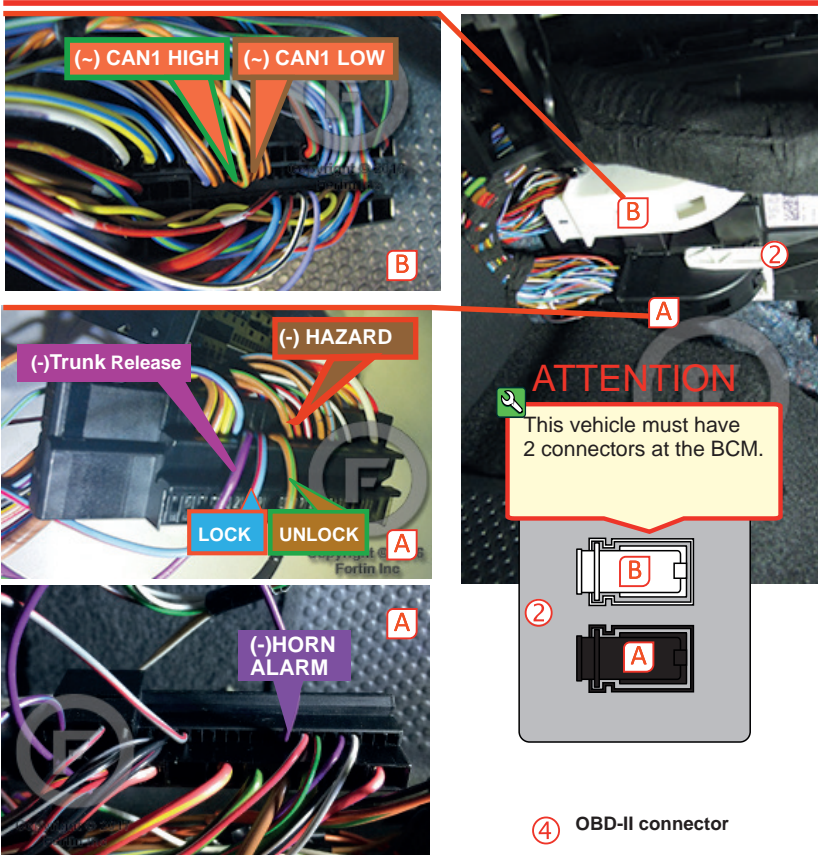
**WARNING | ATTENTION**

REMOTE STARTER

THE VEHICLE CAN BE STARTED BY EITHER: PRESSING THE LOCK BUTTON ON THE OEM REMOTE 3 TIMES CONSECUTIVELY OR BY A SMARTPHONE. **TURN ON** THE SAFETY SWITCH LOCATED UNDER THE DASHBOARD BEFORE WORKING ON THE VEHICLE.

DESCRIPTION

② BCM connector Back of fuse Box



(-) CAN1 HIGH (-) CAN1 LOW

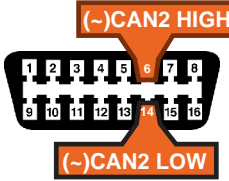
(-) Trunk Release (-) HAZARD

LOCK UNLOCK

(-) HORN ALARM

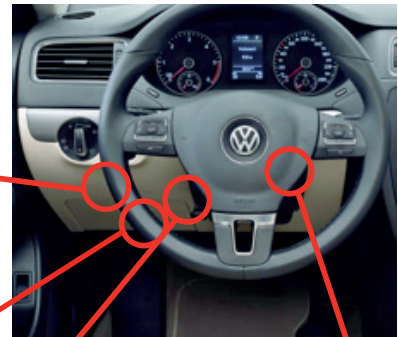
**ATTENTION**  
This vehicle must have 2 connectors at the BCM.

④ OBD-II connector

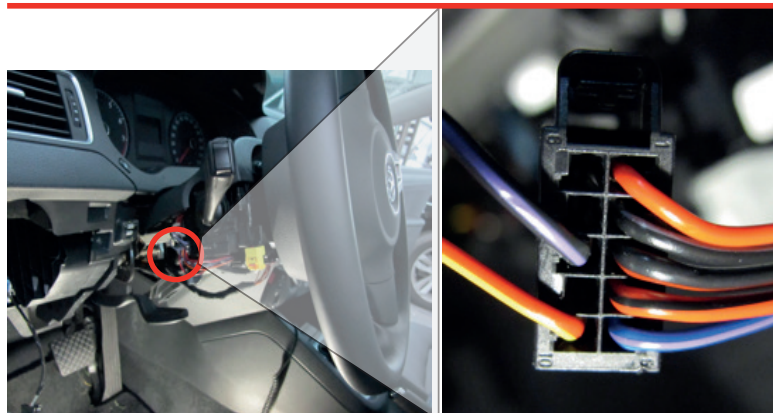


(-) CAN2 HIGH

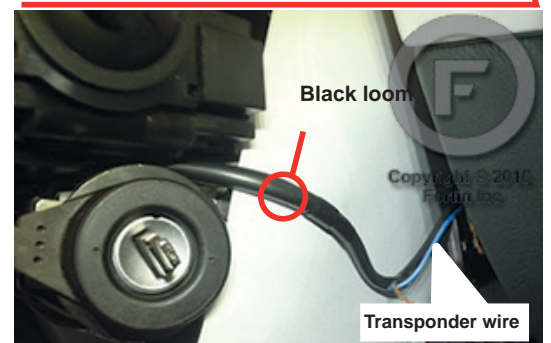
(-) CAN2 LOW



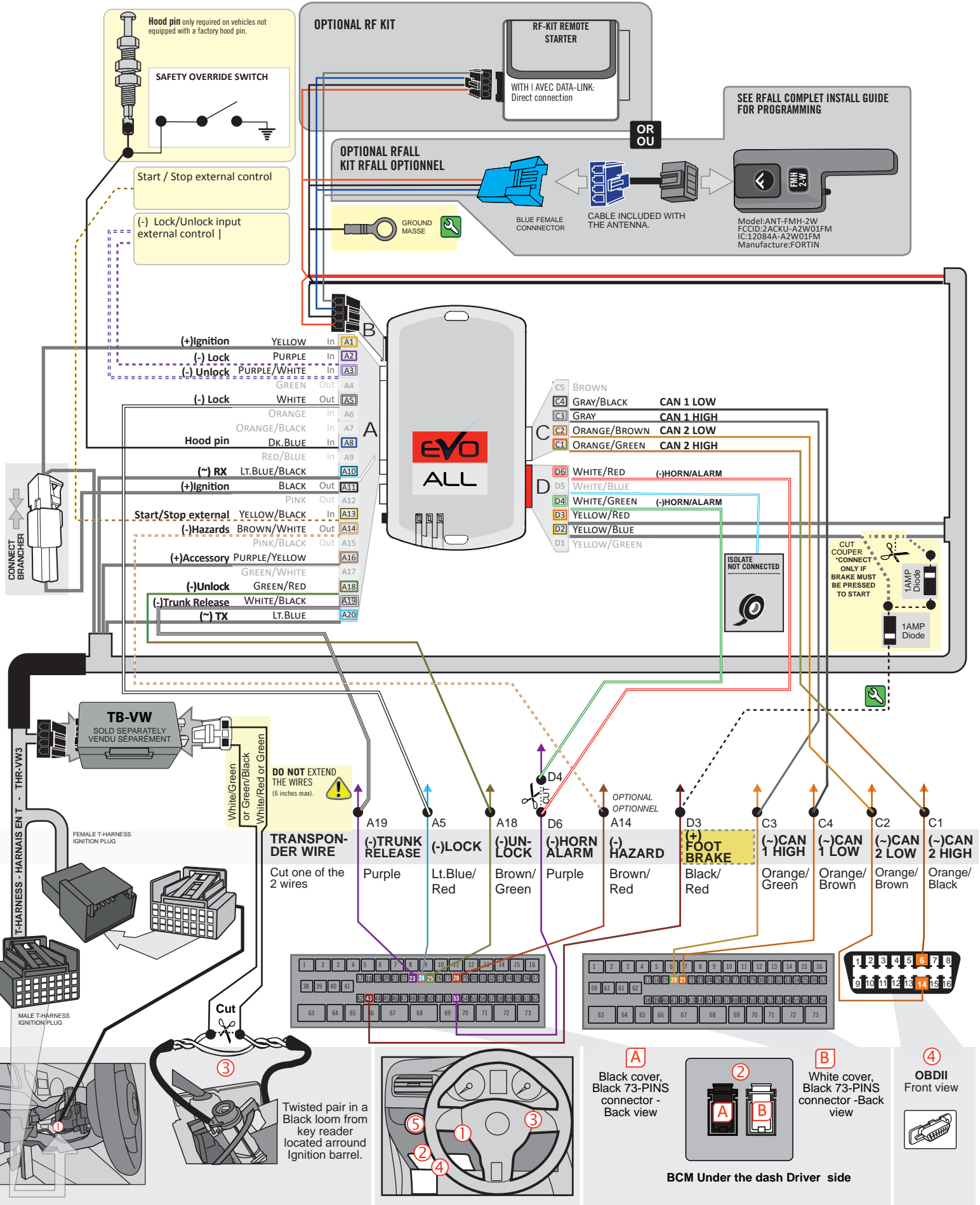
① Ignition Harness



③ Ignition barrel



**AUTOMATIC TRANSMISSION WIRING CONNECTION |**





**DCRYPTOR PROGRAMMING PROCEDURE |**



Parts required (not included)

- 1x **FLASH LINK UPDATER,**
- 1x **FLASH LINK MANAGER**  
SOFTWARE |
- 1x Microsoft Windows Computer with Internet connection  
Ordinateur Microsoft Windows avec connection Internet



OR  
OU

- 1x **FLASH LINK MOBILE**
- 1x **FLASH LINK MOBILE APP**
- 1x Smartphone *Android or iOS* with Internet connection  
*(Internet provider charges may apply)*

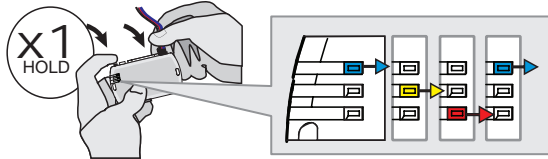
**BEFORE PROGRAMMING SET THE UNIT OPTIONS AND SAVE.**

1



**WARNING:**  
Close and open the driver door.

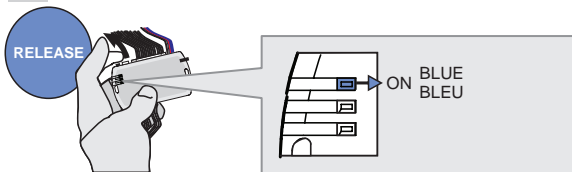
2



Press and hold the programming button:  
Connect the 4-PIN Data-link harness (Black connector).

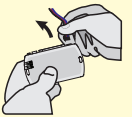
↳ The Blue, Red, Yellow and Blue & Red LEDs will alternatively illuminate.

3

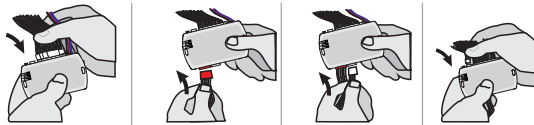


Release the programming button when the Blue LED is ON.

If the LED is not solid BLUE disconnect the 4-PIN Data-link harness (Black connector) and go back to step1.

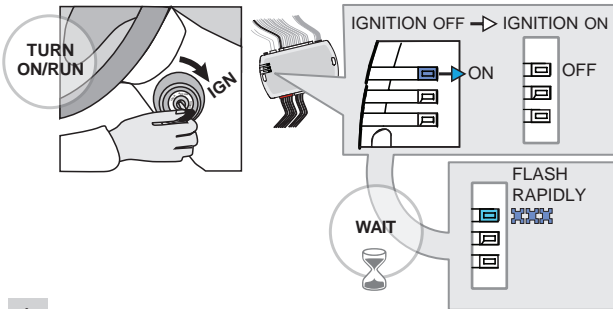


4



Connect the required remaining harnesses.

5

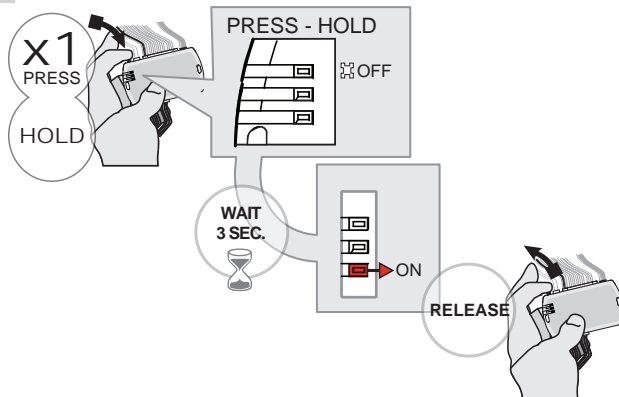


Turn the key to the Ignition ON/RUN position.

Wait,

↳ The BLUE LED will flash rapidly.

6



Press and hold the programming button.

↳ The BLUE LED will turn OFF.

Wait,

↳ The RED LED will turn ON.

Release the programming button.

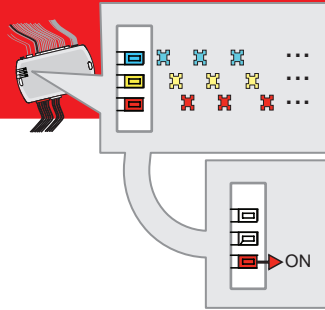
KEY BYPASS PROGRAMMING PROCEDURE 2/4 |

7



**WAIT,**  
this processe may take up  
to 15 minutes

**Attendez,**  
ce processus peut prendre  
jusqu'à 15 minutes



**Wait, do not touch the  
vehicle or the module.**

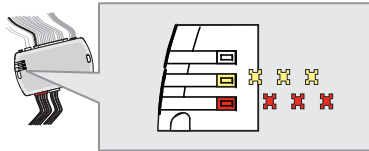


↳ The BLUE, RED and YELLOW  
LEDs will rapidly alternate.

**Wait,**

↳ the RED LED to turn ON.

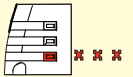
8



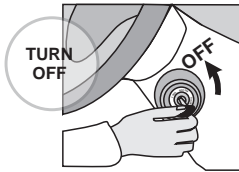
**Wait,**

↳ **Wait** for the RED and YELLOW  
LEDs to slowly alternate.

If the RED LED flashes slowly, the  
programming has failed, go back to  
step 1 and start the programming over.

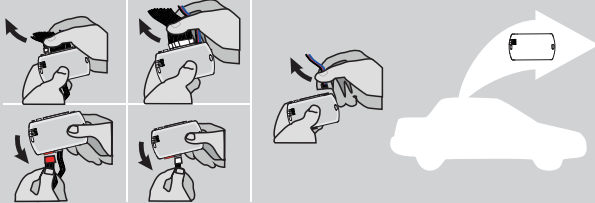


9



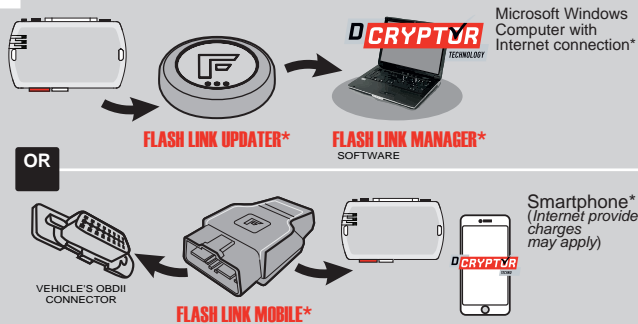
**Turn** the key to the  
OFF position.

10



**Disconnect** all the connectors and after  
the Data-Link (4-pins) connector.

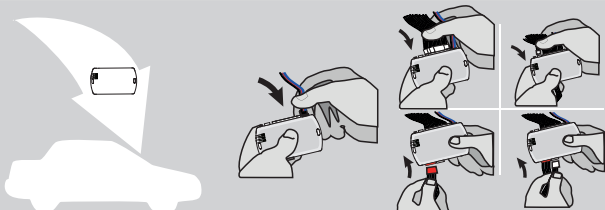
11



**Use** the tool:  
**FLASH LINK UPDATER** or  
**FLASH LINK MOBILE**  
to visit the DCryptor menu.

\*Parts required (not included)

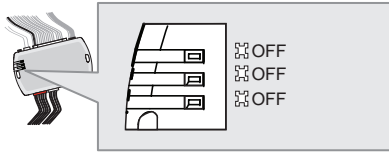
12



**AFTER DCRYPTOR PROGRAMMING COMPLETED**  
**Go** back to the vehicle and **reconnect** the 4-Pin (Data-Link)  
connector and after, all the remaining connector.

KEY BYPASS PROGRAMMING PROCEDURE 3/4 |

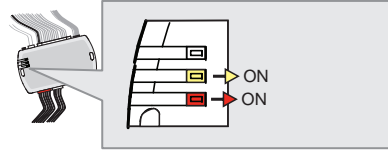
13 AFTER HAVING PLUGGED IN THE DATA-LINK CONNECTOR AND THE REQUIRED REMAINING HARNESSSES :



The RED and YELLOW LEDs stay OFF.

The module is now programmed..

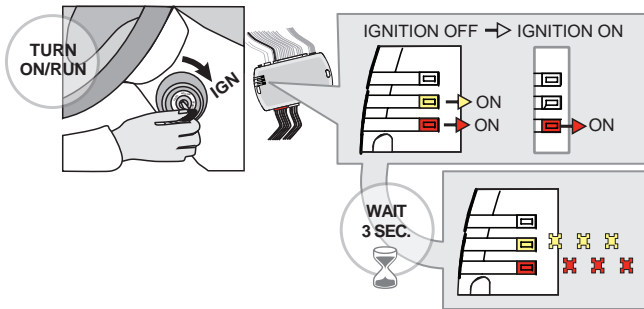
OR OU



The RED and YELLOW LEDs turn ON.

CONTINUED BELOW

14

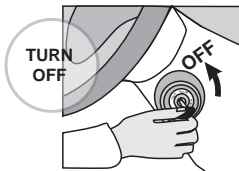


Turn the key to the Ignition ON/RUN position.

The YELLOW LED will turn OFF.

The RED and YELLOW LEDs will alternate.

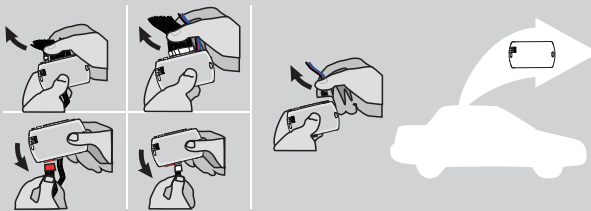
15



Turn the key to the OFF position.

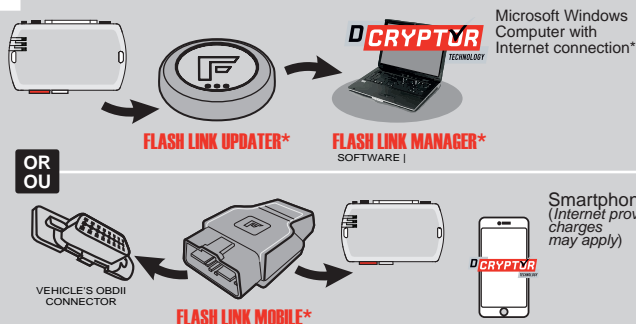


16



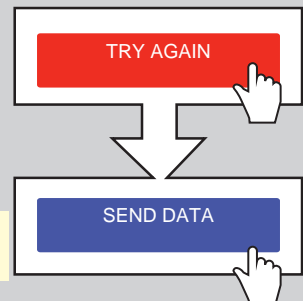
Disconnect all the connectors and after the Data-Link (4-pins) connector.

17



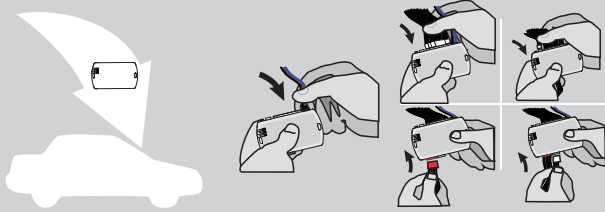
Use the tool: FLASH LINK UPDATER or FLASH LINK MOBILE to visit the DCryptor menu.

\*Parts required (not included)



KEY BYPASS PROGRAMMING PROCEDURE 4/4 |

18



**AFTER DCRYPTOR PROGRAMMING COMPLETED**  
Go back to the vehicle and **reconnect** the 4-Pin (Data-Link) connector and after, all the remaining connector.



The module is now programmed.



**REMOTE STARTER / ALARM VERIFICATION PROCEDURE**

Test the remote starter. Remote start the vehicle.

**NOTE**

IF PROGRAMMING IS INTERRUPTED DURING THE PROCESS, SUCH AS A MODULE IS DISCONNECTED OR BY TURNING OFF THE IGNITION WITH THE KEY, IT IS POSSIBLE THAT THE VEHICLE WILL NO LONGER START NORMALLY, YOU MUST DISCONNECT AND RECONNECT THE VEHICLE BATTERY TO CORRECT THE SITUATION.



**THAR-VW3 STAND ALONE INSTALLATION**

ADDENDUM - SUGGESTED WIRING CONFIGURATION



**ONLY COMPATIBLE WITH AUTOMATIC TRANSMISSION VEHICLES.**



Vehicle functions supported in this diagram (functional if equipped)

VEHICLE	YEARS	Key Control	T-Harness	Lock	Unlock	Arm	Disarm	Tachometer	Parking Lights	Trunk - open	Door Status	Trunk Status	Hood Status *	Hand-Brake Status	Foot-Brake Status	OEM Remote monitoring
VOLKSWAGEN																
Jetta	2011-2014	•	•	•	•	•	•	•	•	•	•	•	•	•	•	•



FIRMWARE VERSION

**75.[38]**

VW MINIMUM

To add the firmware version and the options, use the **FLASH LINK UPDATER** or **FLASH LINK MOBILE** tool, sold separately.



Program bypass option:

UNIT OPTION

DESCRIPTION

**C1**

OEM Remote status (Lock/Unlock) monitoring

**A5**

**OFF**

Analog Door lock control



Program bypass option  
(If equipped with OEM alarm):

UNIT OPTION

DESCRIPTION

**D2**

Unlock before / Lock after (Disarm OEM alarm)



**Parts required** (Not included)

- 1x Vehicle Key
- 1x THAR-VW3

**NOTES**



**1 KEY REQUIRED FOR THE INSTALLATION**

The vehicle's OEM remote will operate while the engine is running.

**MANDATORY INSTALL**

\* HOOD PIN



**HOOD STATUS:** THE HOOD PIN SWITCH MUST BE INSTALLED IF THE VEHICLE CAN BE REMOTE STARTED WITH THE HOOD OPEN, SET FUNCTION A11 TO OFF.

**A11**

**OFF**

**Notice:** the installation of safety elements are mandatory. The hood pin is an essential security element and must be installed.

THIS MODULE MUST BE INSTALLED BY A QUALIFIED TECHNICIAN. A WRONG CONNECTION CAN CAUSE PERMANENT DAMAGE TO THE VEHICLE.



**PARTS REQUIRED (NOT INCLUDED)**


1x **FLASH LINK UPDATER,**  
1x **FLASH LINK MANAGER**  
SOFTWARE  
1x Microsoft Windows Computer with Internet connection

**OR**

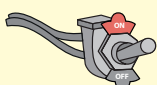
1x **FLASH LINK MOBILE**  
1x **FLASH LINK MOBILE APP**  
Smartphone *Android* or *iOS* with Internet connection (*provider charges may apply*).  
1x

**MANDATORY**

HOOD PIN



REMOTE START SAFETY OVERRIDE SWITCH


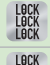





VALET SWITCH


Part #: RSPB available, Sold separately.

**Notice:** the installation of safety elements are mandatory. The hood pin and the valet switch are essential security elements and must be installed.


**STAND ALONE CONFIGURATION**

	Program bypass option	UNIT OPTION	DESCRIPTION
	<b>OEM Remote Stand Alone Remote Starter:</b>	<b>OR</b> <b>D1.10</b> 	<b>By default, LOCK, LOCK, LOCK</b> Par défaut, VERROUILLE,VERROUILLE,VERROUILLE
		<b>D1.1</b> 	
	<b>Program bypass option with oem remote:</b>	<b>C1</b>	OEM Remote Monitoring
	<b>Program bypass option with RF KIT antenna:</b>	<b>H1 to H6</b> <b>H1 à H6</b>	Supported RF Kits and <b>select RF Kit</b>


**REMOTE STARTER FUNCTIONALITY**




All doors must be closed.

**3X** 

Press the OEM remote's Lock button 3x to remote-start (or remote-stop) the vehicle.



**START** 

The vehicle will START.

**REMOTE STARTER DIAGNOSTICS**  
MODULE RED LED

<b>x2 flash :</b>	Brake ON
<b>x3 flash :</b>	No tach
<b>x4 flash :</b>	Ignition before start
<b>x5 flash :</b>	Hood Open

**REMOTE STARTER WARNING CARD**



**CUT THIS WARNING CARD AND STICK IT ON A VISIBLE PLACE:**  
or use the package **RSPB**, Sold separately.

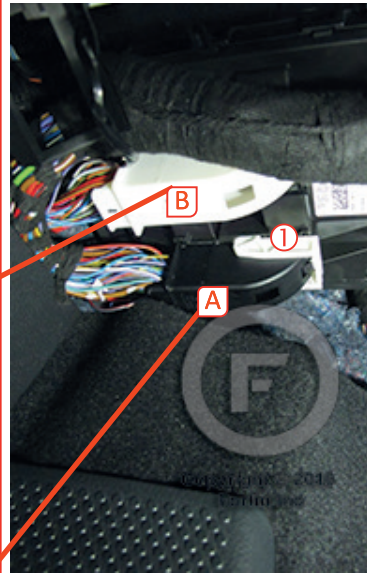
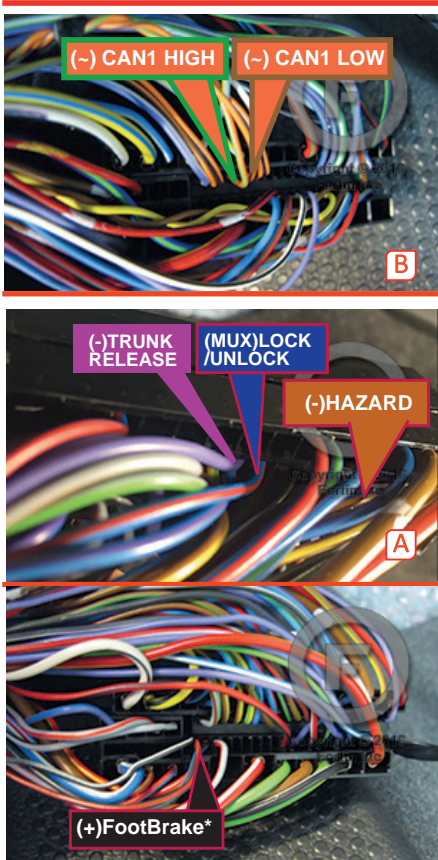
**WARNING | ATTENTION**



**REMOTE STARTER**

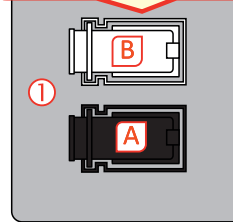
THE VEHICLE CAN BE STARTED BY EITHER: PRESSING THE LOCK BUTTON ON THE OEM REMOTE 3 TIMES CONSECUTIVELY OR BY A SMARTPHONE. **TURN ON** THE SAFETY SWITCH LOCATED UNDER THE DASHBOARD BEFORE WORKING ON THE VEHICLE.

① BCM connector Back of fuse Box

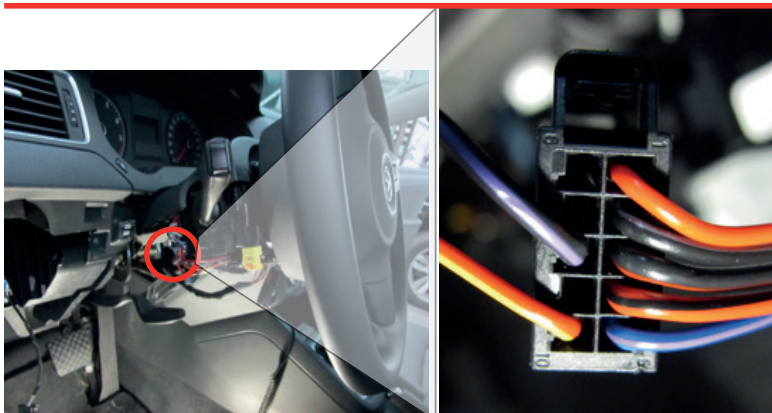


ATTENTION

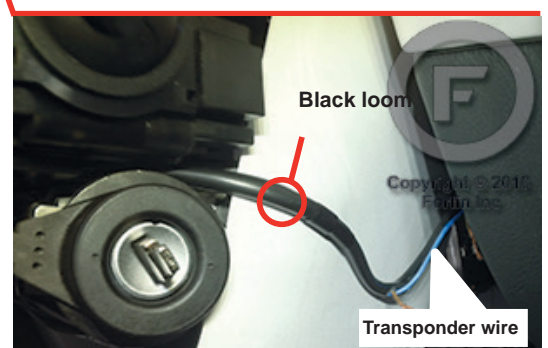
This vehicle must have 2 connectors at the BCM.



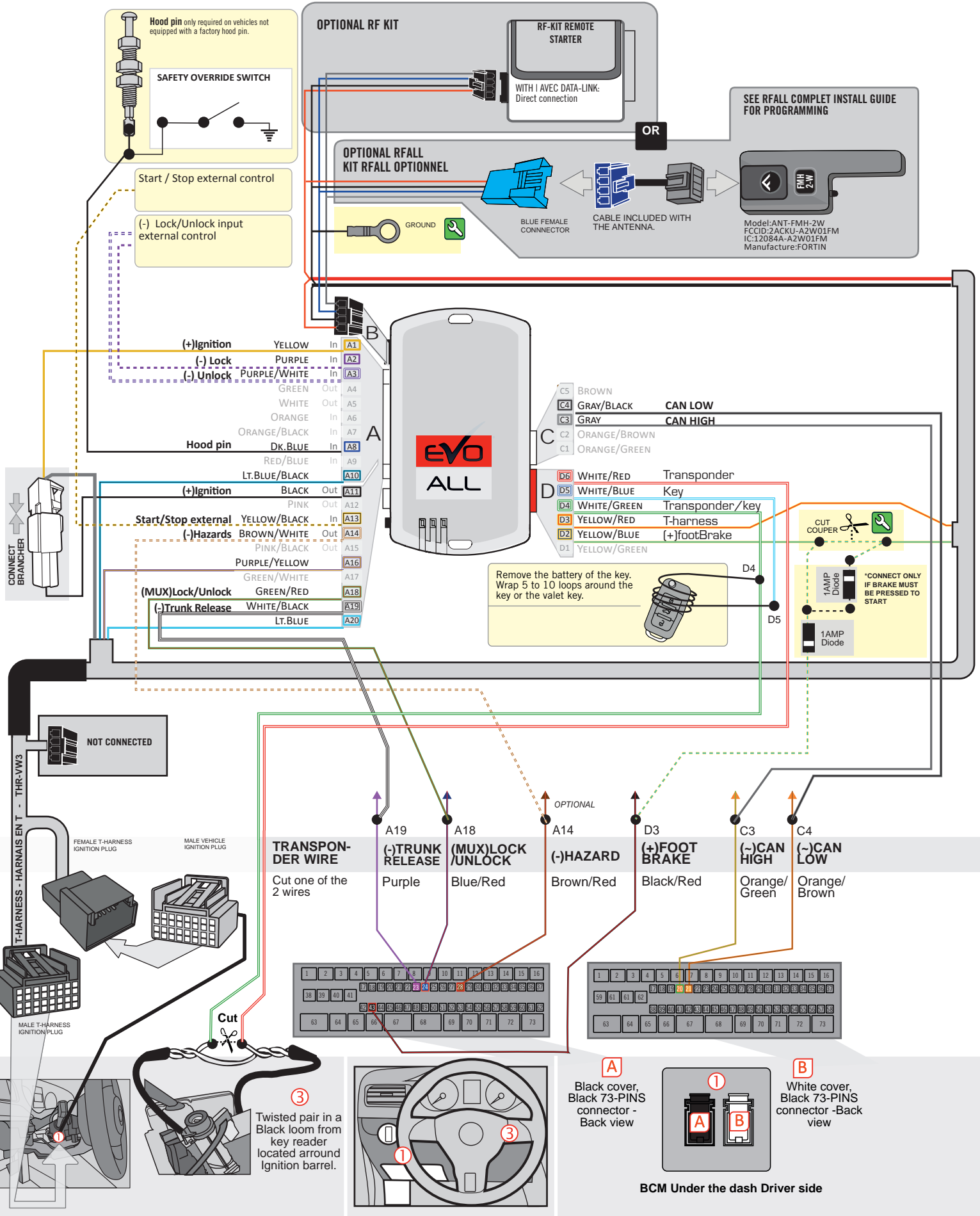
② Ignition Harness



③ Ignition barrel

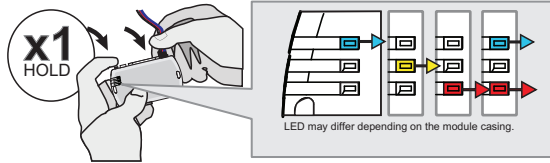


**AUTOMATIC TRANSMISSION WIRING CONNECTION**



**PROGRAMMING PROCEDURE**

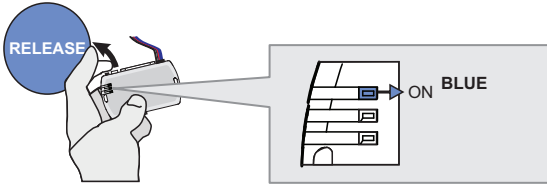
1



**Press and hold** the programming button:  
**Connect** the 4-PIN Data-link harness (Black connector).

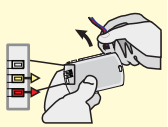
↳ The Blue, Red, Yellow and Blue & Red LEDs will alternatively illuminate.

2

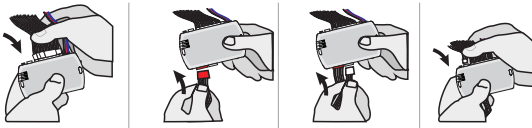


**Release** the programming button when the LED is BLUE.

If the LED is not solid BLUE disconnect the 4-Pin connector (Data-Link) and go back to step 1.

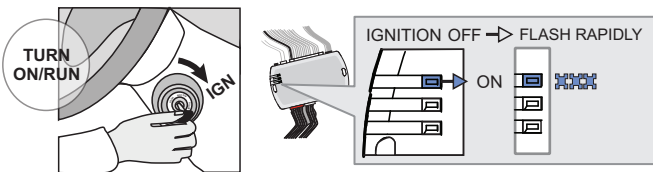


3



**Insert** the required remaining connectors.

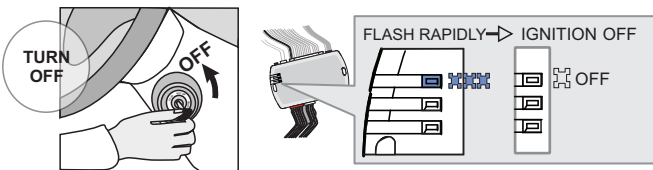
4



**Turn** the key to the Ignition ON/RUN position.

↳ The BLUE LED will flash rapidly.

5



**Turn** the key to the OFF position.

↳ The BLUE LED will turn off.



The module is now programmed.

**THAR-VW3 & TB-VW STAND ALONE INSTALLATION**

ADDENDUM - SUGGESTED WIRING CONFIGURATION


**ONLY COMPATIBLE WITH AUTOMATIC TRANSMISSION VEHICLES.**


Vehicle functions supported in this diagram (functional if equipped)

VEHICLE	YEARS	Key Control	T-Harness	Lock	Unlock	Arm	Disarm	Tachometer	Parking Lights	Trunk - open	Door Status	Trunk Status	Hood Status *	Hand-Brake Status	Foot-Brake Status	OEM Remote monitoring
VOLKSWAGEN Jetta	2011-2017	•	•	•	•	•	•	•	•	•	•	•	•	•	•	•



FIRMWARE VERSION

**75.[38]**

VW MINIMUM

 To add the firmware version and the options, use the **FLASH LINK UPDATER** or **FLASH LINK MOBILE** tool, sold separately.

**Program bypass option:**

UNIT OPTION

DESCRIPTION

**C1**

OEM Remote status (Lock/Unlock) monitoring

**A5**
**OFF**

Analog Door lock control


**Program bypass option  
(If equipped with OEM alarm):**

UNIT OPTION

DESCRIPTION

**D2**

Unlock before / Lock after (Disarm OEM alarm)

**NOTES**

The vehicle's OEM remote will operate while the engine is running.


**Parts required** (Not included)

 1x TB-VW  
1x THAR-VW3

**MANDATORY INSTALL**
**\* HOOD PIN**

**HOOD STATUS:** THE HOOD PIN SWITCH MUST BE INSTALLED IF THE VEHICLE CAN BE REMOTE STARTED WITH THE HOOD OPEN, SET FUNCTION A11 TO OFF.

**A11**
**OFF**
**Notice:** the installation of safety elements are mandatory. The hood pin is an essential security element and must be installed.

**THIS MODULE MUST BE INSTALLED BY A QUALIFIED TECHNICIAN. A WRONG CONNECTION CAN CAUSE PERMANENT DAMAGE TO THE VEHICLE.**




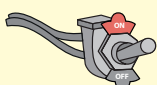
**PARTS REQUIRED (NOT INCLUDED)**

1x **FLASH LINK UPDATER,**  
1x **FLASH LINK MANAGER**  
SOFTWARE | PROGRAMME  
1x Microsoft Windows Computer with Internet connection

**OR**

1x **FLASH LINK MOBILE**  
1x **FLASH LINK MOBILE APP**  
Smartphone *Android* or *iOS* with Internet connection (*provider charges may apply*).

**MANDATORY**


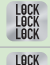



HOOD PIN  REMOTE START SAFETY OVERRIDE SWITCH 

VALET SWITCH


Part #: RSPB available, Sold separately.

**Notice:** the installation of safety elements are mandatory. The hood pin and the valet switch are essential security elements and must be installed.


**STAND ALONE CONFIGURATION**

	Program bypass option	UNIT OPTION	DESCRIPTION
	<b>OEM Remote Stand Alone Remote Starter:</b>	<b>D1.10</b> 	<b>By default, LOCK, LOCK, LOCK</b> Par défaut, VERROUILLE, VERROUILLE, VERROUILLE
		<b>D1.1</b> 	
	<b>Program bypass option with oem remote:</b>	<b>C1</b>	OEM Remote Monitoring
	<b>Program bypass option with RF KIT antenna:</b>	<b>H1 to H6</b>	Supported RF Kits and <b>select RF Kit</b>


**REMOTE STARTER FUNCTIONALITY**




All doors must be closed.

**3X** 

Press the OEM remote's Lock button 3x to remote-start (or remote-stop) the vehicle.




**START** 

The vehicle will START.

**REMOTE STARTER DIAGNOSTICS**  
MODULE RED LED

<b>x2 flash :</b>	Brake ON
<b>x3 flash :</b>	No tach
<b>x4 flash :</b>	Ignition before start
<b>x5 flash :</b>	Hood Open

**REMOTE STARTER WARNING CARD**



**CUT THIS WARNING CARD AND STICK IT ON A VISIBLE PLACE:**  
or use the package **RSPB**, Sold separately.

**WARNING | ATTENTION**

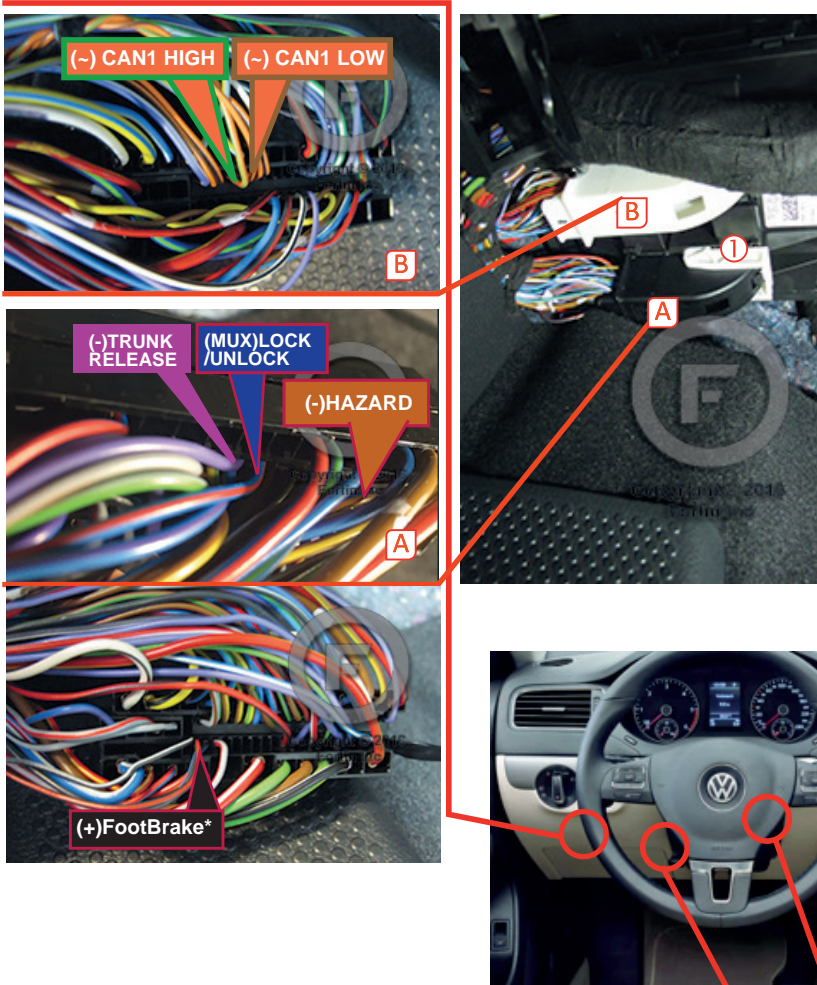


REMOTE STARTER

THE VEHICLE CAN BE STARTED BY EITHER: PRESSING THE LOCK BUTTON ON THE OEM REMOTE 3 TIMES CONSECUTIVELY OR BY A SMARTPHONE. **TURN ON** THE SAFETY SWITCH LOCATED UNDER THE DASHBOARD BEFORE WORKING ON THE VEHICLE.

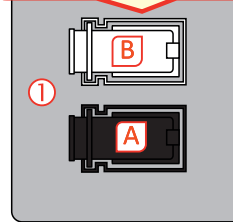
DESCRIPTION

① BCM connector Back of fuse Box

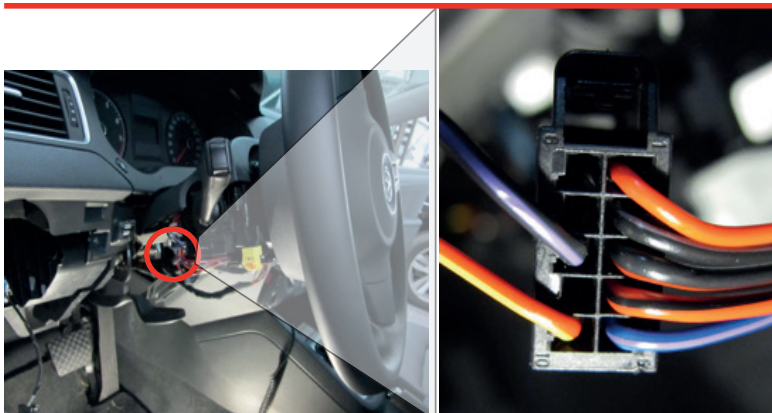


ATTENTION

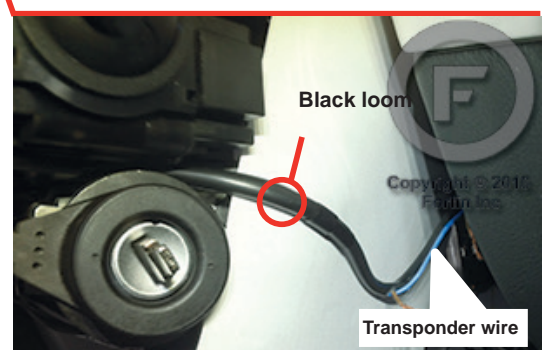
This vehicle must have 2 connectors at the BCM.



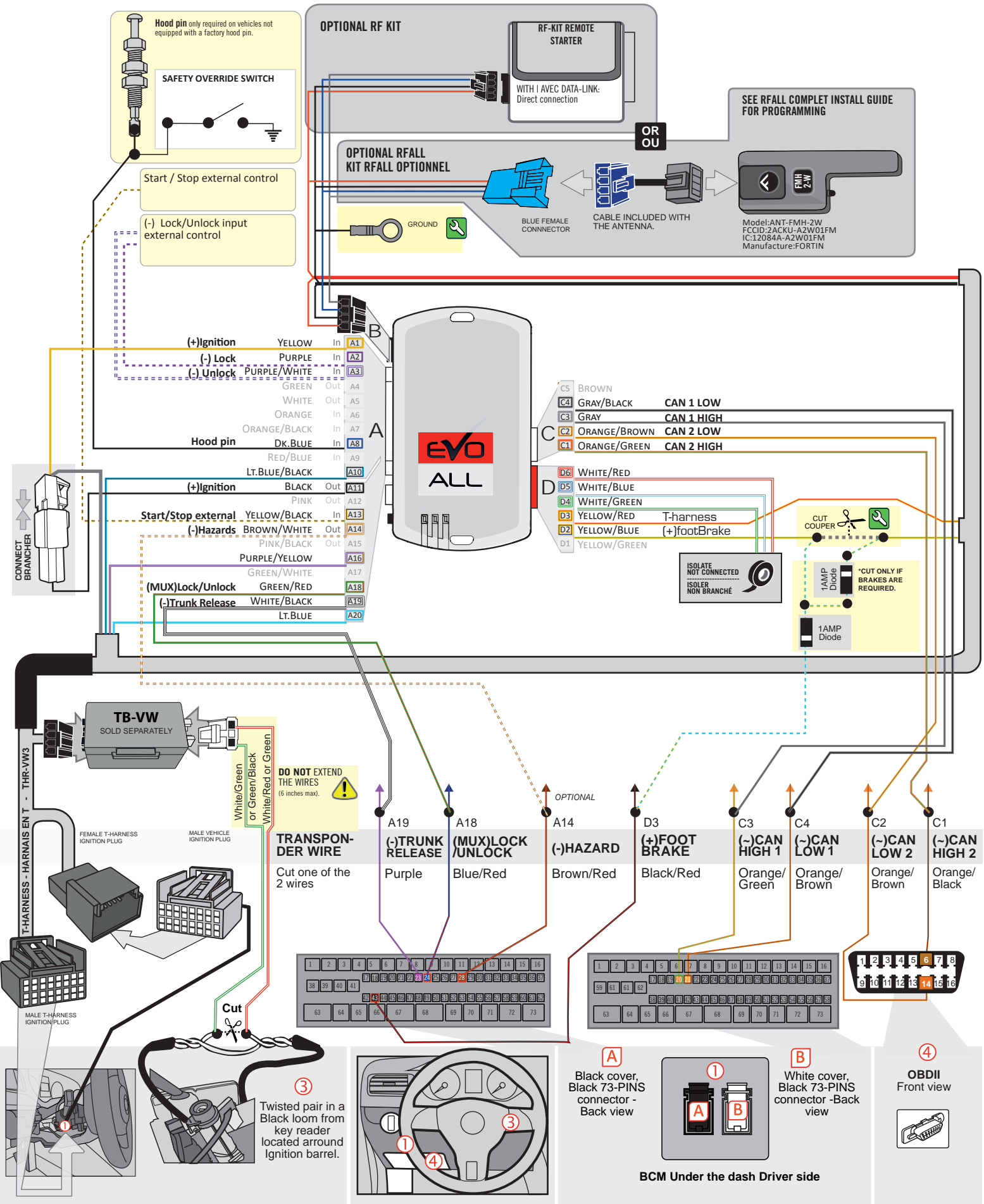
② Ignition Harness



③ Ignition barrel



**AUTOMATIC TRANSMISSION WIRING CONNECTION**



**DCRYPTOR PROGRAMMING PROCEDURE**



Parts required (not included)

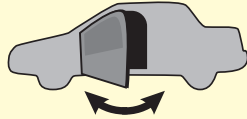
- 1x FLASH LINK UPDATER, SOFTWARE
- 1x FLASH LINK MANAGER SOFTWARE
- 1x Microsoft Windows Computer with Internet connection

OR  
OU

- 1x FLASH LINK MOBILE
- 1x FLASH LINK MOBILE APP
- 1x Smartphone Android or iOS with Internet connection (Internet provider charges may apply)

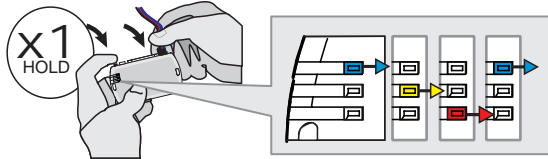
**BEFORE PROGRAMMING SET THE UNIT OPTION AND SAVE.**

1



**WARNING:**  
Close and open the driver door.

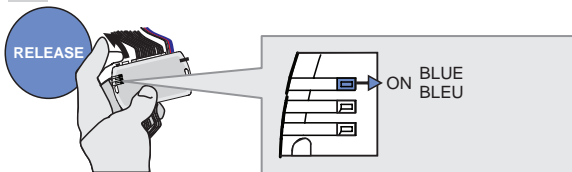
2



Press and hold the programming button:  
Connect the 4-PIN Data-link harness (Black connector).

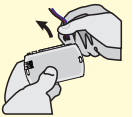
↳ The Blue, Red, Yellow and Blue & Red LEDs will alternatively illuminate.

3

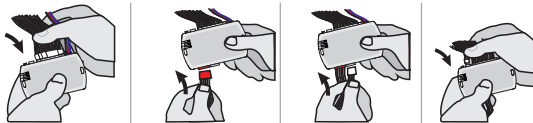


Release the programming button when the Blue LED is ON.

If the LED is not solid BLUE disconnect the 4-PIN Data-link harness (Black connector) and go back to step 1.

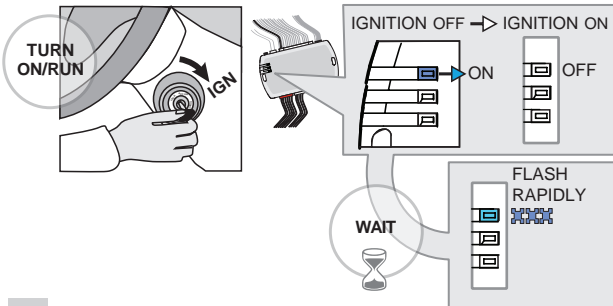


4



Connect the required remaining harnesses.

5

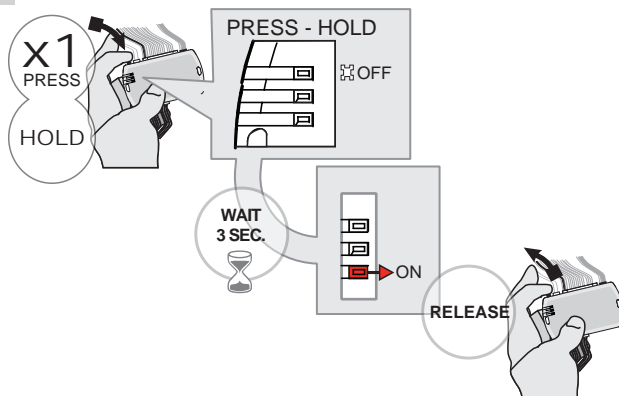


Turn the key to the Ignition ON/RUN position.

Wait,

↳ The BLUE LED will flash rapidly.

6



Press and hold the programming button.

↳ The BLUE LED will turn OFF.

Wait,

↳ The RED LED will turn ON.

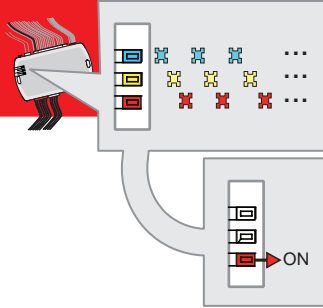
Release the programming button.

KEY BYPASS PROGRAMMING PROCEDURE 2/4

7



**WAIT,**  
this process may take up  
to 15 minutes



**Wait, do not touch the vehicle or the module.**

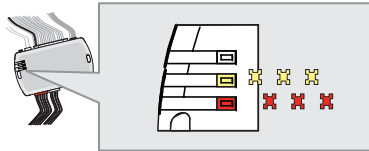


↳ The BLUE, RED and YELLOW LEDs will rapidly alternate.

**Wait,**

↳ the RED LED to turn ON.

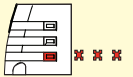
8



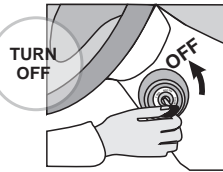
**Wait,**

↳ **Wait** for the RED and YELLOW LEDs to slowly alternate.

If the RED LED flashes slowly, the programming has failed, go back to step 1 and start the programming over.

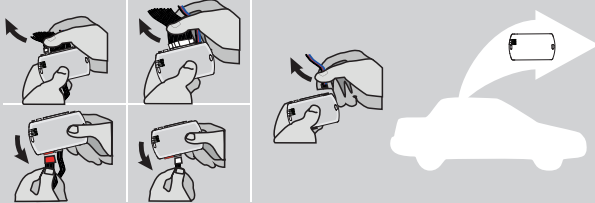


9



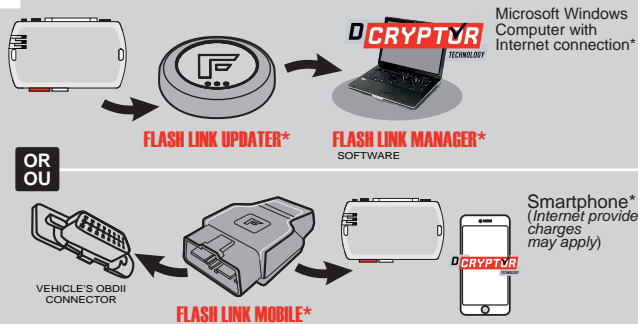
**Turn** the key to the OFF position.

10



**Disconnect** all the connectors and after the Data-Link (4-pins) connector.

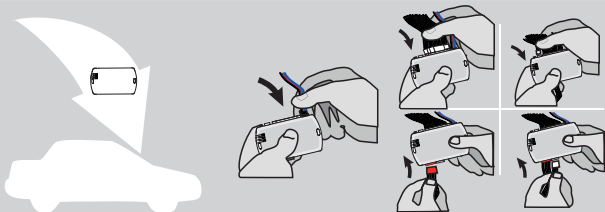
11



**Use** the tool: **FLASH LINK UPDATER** or **FLASH LINK MOBILE** to visit the DCryptor menu.

\*Parts required (not included)

12

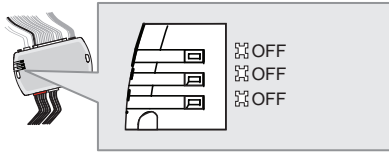


**AFTER DCRYPTOR PROGRAMMING COMPLETED**  
**Go** back to the vehicle and **reconnect** the 4-Pin (Data-Link) connector and after, all the remaining connector.



KEY BYPASS PROGRAMMING PROCEDURE 3/4

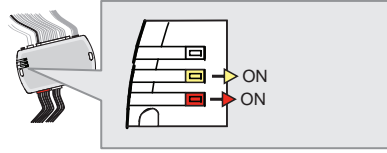
13 AFTER HAVING PLUGGED IN THE DATA-LINK CONNECTOR AND THE REQUIRED REMAINING HARNESSSES :



↳The RED and YELLOW LEDs stay OFF.

The module is now programmed..

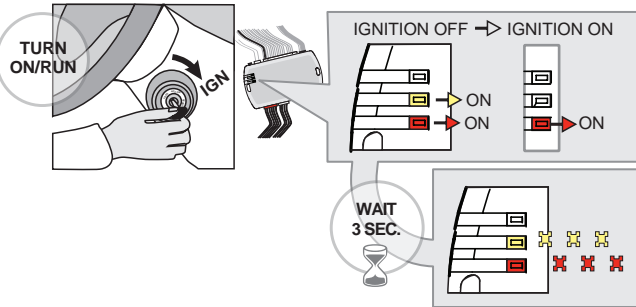
OR  
OU



↳The RED and YELLOW LEDs turn ON.

CONTINUED BELOW

14

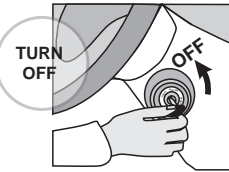


Turn the key to the Ignition ON/RUN position.

↳The YELLOW LED will turn OFF.

↳The RED and YELLOW LEDs will alternate.

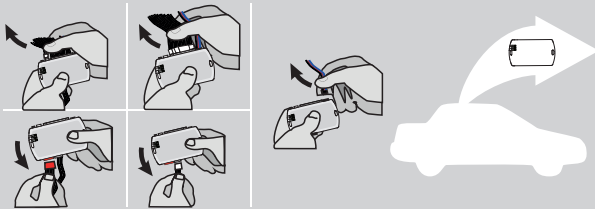
15



Turn the key to the OFF position.



16



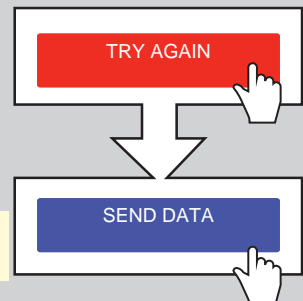
Disconnect all the connectors and after the Data-Link (4-pins) connector.

17



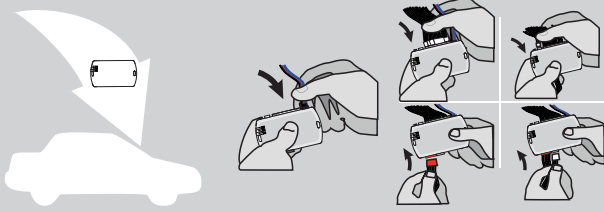
Use the tool: FLASH LINK UPDATER or FLASH LINK MOBILE to visit the DCryptor menu.

\*Parts required (not included)



**KEY BYPASS PROGRAMMING PROCEDURE 4/4**

18



**AFTER DCRYPTOR PROGRAMMING COMPLETED**  
 Go back to the vehicle and **reconnect** the 4-Pin (Data-Link) connector and after, all the remaining connector.



The module is now programmed.



**REMOTE STARTER / ALARM VERIFICATION PROCEDURE**

Test the remote starter.  
 Remote start the vehicle.

**NOTE**

**IF PROGRAMMING IS INTERRUPTED DURING THE PROCESS, SUCH AS A MODULE IS DISCONNECTED OR BY TURNING OFF THE IGNITION WITH THE KEY, IT IS POSSIBLE THAT THE VEHICLE WILL NO LONGER START NORMALLY, YOU MUST DISCONNECT AND RECONNECT THE VEHICLE BATTERY TO CORRECT THE SITUATION.**



# THAR-VW3 STAND ALONE INSTALLATION

ADDENDUM - SUGGESTED WIRING CONFIGURATION



**ONLY COMPATIBLE WITH AUTOMATIC TRANSMISSION VEHICLES.**



Vehicle functions supported in this diagram (functional if equipped)

VEHICLE	YEARS	Key Control	T-Harness	Lock	Unlock	Arm	Disarm	Tachometer	Hazard Lights	Trunk - open	Door Status	Trunk Status	Hood Status *	Hand-Brake Status	Foot-Brake Status	OEM Remote monitoring
<b>VOLKSWAGEN</b> Jetta	2015-2017	•	•	•	•	•	•	•	•	•	•	•	•	•	•	•

	HARDWARE VERSION	FIRMWARE VERSION
	MINIMUM <b>6</b>	<b>75.[28]</b> <small>VW MINIMUM</small>

	Program bypass option:	UNIT OPTION	DESCRIPTION
		<b>C1</b>	OEM Remote status (Lock/Unlock) monitoring
	Program bypass option (if equipped with OEM alarm):	<b>A5</b> <b>OFF</b>	Analog Door lock control
		<b>D2</b>	Unlock before / Lock after (Disarm OEM alarm)



**Parts required** (Not included)

- 1x Vehicle Key
- 1x THAR-VW3
- 2x Diodes

**NOTES**

\* Hood Status : Hood Status : functional if equipped with a factory hood switch.



**1 KEY REQUIRED FOR THE INSTALLATION**

The vehicle's OEM remote will operate while the engine is running.

**PARTS REQUIRED (NOT INCLUDED)**



**FLASH LINK UPDATER 2**

**FLASH LINK MANAGER**  
SOFTWARE



Microsoft Windows Computer  
(Internet connection required)

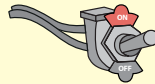


**MANDATORY**

HOOD PIN



REMOTE START SAFETY OVERRIDE SWITCH






VALET SWITCH


Part #: RSPB available, Sold separately.

**Notice:** the installation of safety elements are mandatory. The hood pin and the valet switch are essential security elements and must be installed.

**STAND ALONE CONFIGURATION**



		UNIT OPTION	DESCRIPTION
	Program bypass option:	<b>D1</b>	OEM Remote Stand Alone Remote Starter
	Program bypass option with oem remote:	<b>C1</b>	OEM Remote Monitoring
	Program bypass option with RF KIT antenna:	<b>H1 to H6</b>	Supported RF Kits and select RF Kit

**REMOTE STARTER FUNCTIONNALITY**




All doors must be closed.

**3X**

Press the OEM remote's Lock button 3x to remote-start (or remote-stop) the vehicle.




The vehicle will START.

**REMOTE STARTER DIAGNOSTICS**  
MODULE RED LED

<b>x2 flash :</b>	Brake ON
<b>x3 flash :</b>	No tach
<b>x4 flash :</b>	Ignition before start
<b>x5 flash :</b>	Hood Open

**REMOTE STARTER WARNING CARD**

  
**CUT THIS WARNING CARD AND STICK IT ON A VISIBLE PLACE:**  
 or use the package RSPB, Sold separately.

**WARNING | ATTENTION**

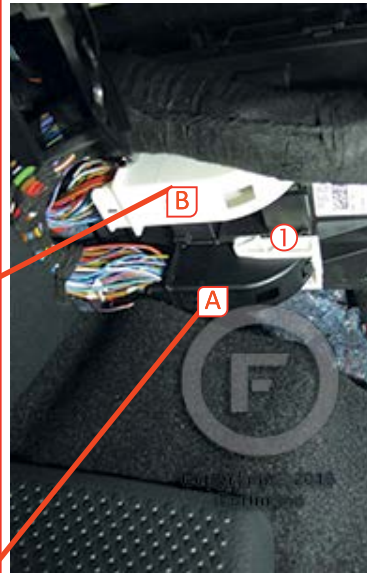
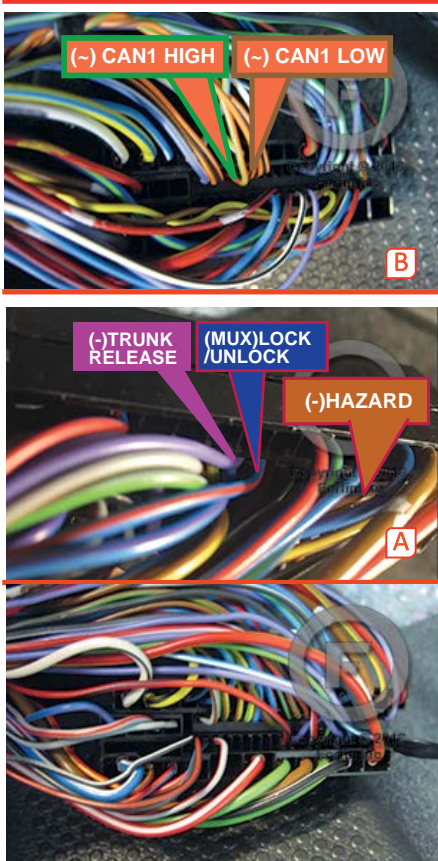


REMOTE STARTER

THE VEHICLE CAN BE STARTED BY EITHER: PRESSING THE LOCK BUTTON ON THE OEM REMOTE 3 TIMES CONSECUTIVELY OR BY A SMARTPHONE. **TURN ON** THE SAFETY SWITCH LOCATED UNDER THE DASHBOARD BEFORE WORKING ON THE VEHICLE.

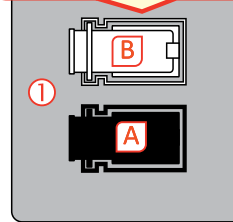
DESCRIPTION |

① BCM connector Back of fuse Box



ATTENTION

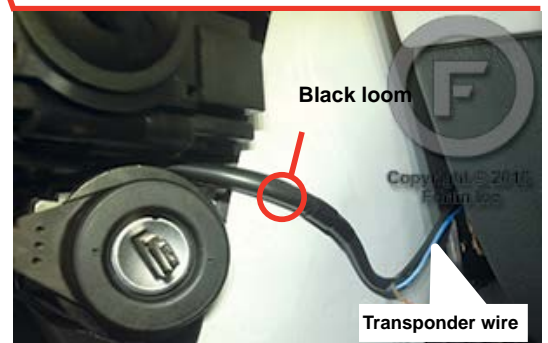
This vehicle must have 2 connectors at the BCM.



② Ignition Harness

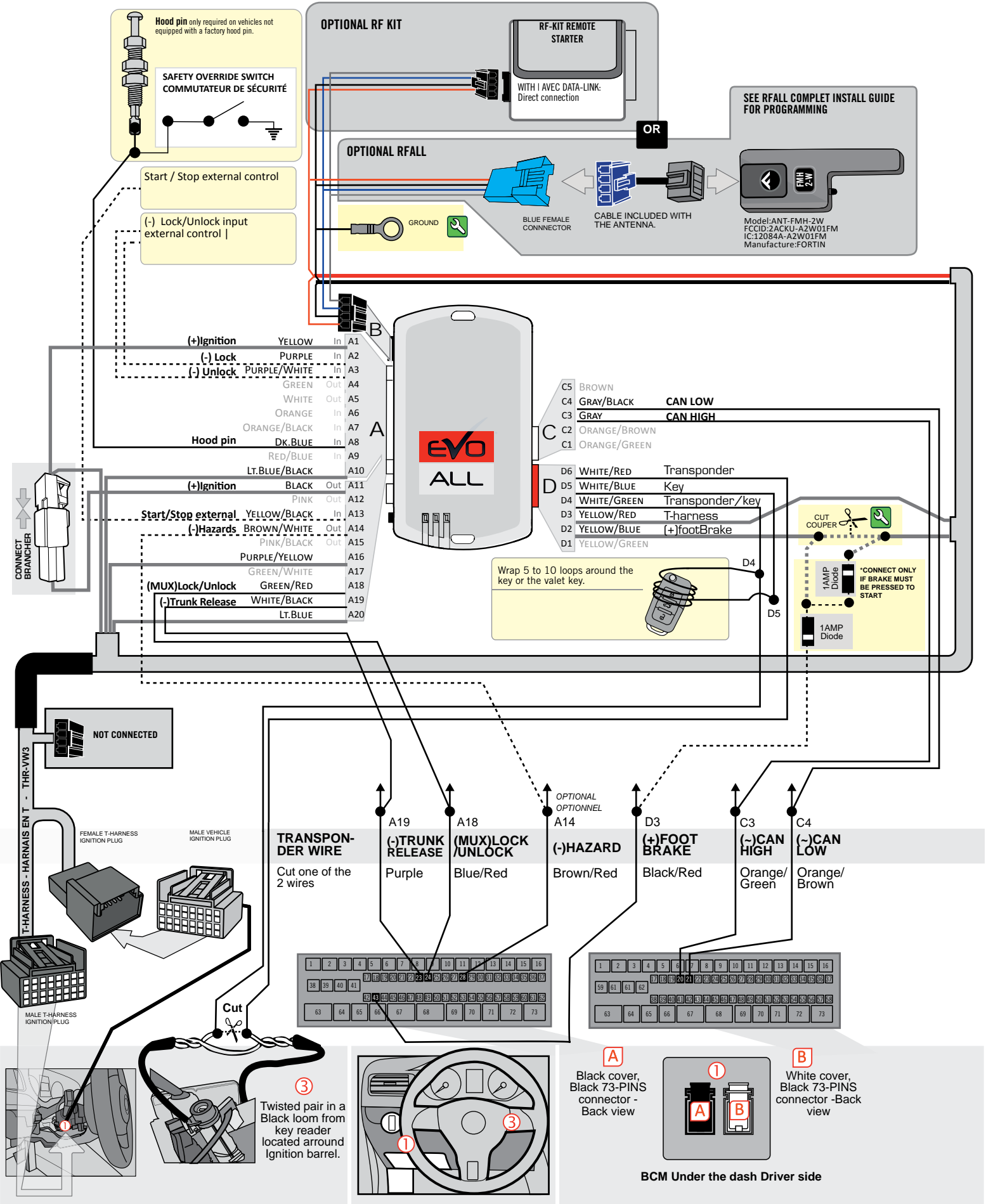


③ Ignition barrel



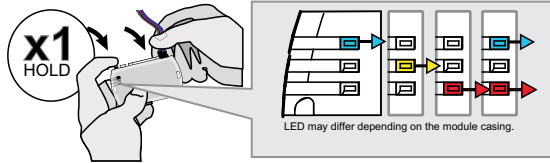


**AUTOMATIC TRANSMISSION WIRING CONNECTION**



**PROGRAMMING PROCEDURE**

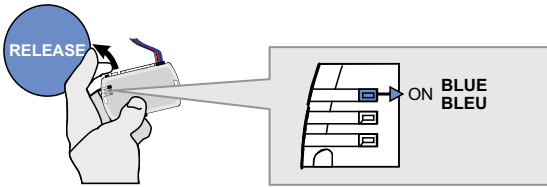
1



**Press and hold** the programming button:  
**Connect** the 4-PIN Data-link harness (Black connector).

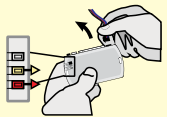
↳ The Blue, Red, Yellow and Blue & Red LEDs will alternatively illuminate.

2

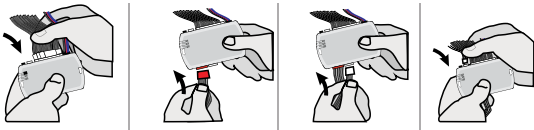


**Release** the programming button when the LED is BLUE.

If the LED is not solid BLUE disconnect the 4-Pin connector (Data-Link) and go back to step 1.

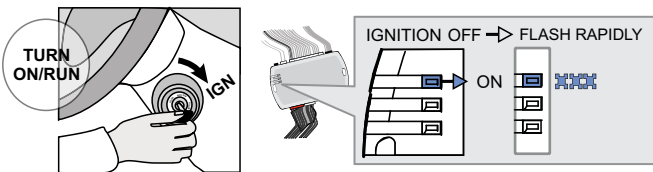


3



**Insert** the required remaining connectors.

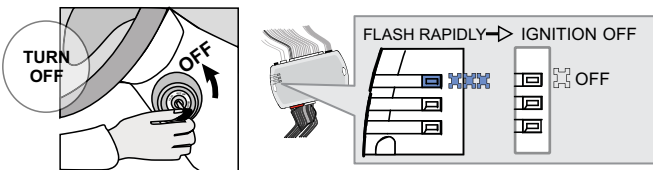
4



**Turn** the key to the Ignition ON/RUN position.

↳ The BLUE LED will flash rapidly.

5



**Turn** the key to the OFF position.

↳ The BLUE LED will turn off.



The module is now programmed.