

REGULAR INSTALLATION

ADDENDUM - SUGGESTED WIRING CONFIGURATION

		Vehicle functions supported in this diagram (functional if equipped)																	
VEHICLE	YEARS	Key Control	Lock	Unlock	Arm	Disarm	Parking Lights	Trunk (open)	Tachometer	AUX.1 Comfort Group		Door Status	Trunk Status	Hood Status*	Hand-Brake Status	Foot-Brake Status	OEM Remote monitoring	R.S. OEM remote Stand Alone compatible	
										Heated seats	Rear defrost								
AUDI																			
A3 / S3 PTS	PTS	2019-2020	•	•	•	•	•	•	•	•	•	•	•	•	•	•	•	•	•
RS3	PTS	2019-2020	•	•	•	•	•	•	•	•	•	•	•	•	•	•	•	•	•

	COMPATIBLE MODULE REQUIRED:	QR CODE ON THE LABEL MANUFACTURED AFTER: 2019 CODE QR SUR	FIRMWARE VERSION 61[11] VW MINIMUM	REMOTE STARTER FIRMWARE VERSION 1.25 MINIMUM	To add the firmware version and the options, use the FLASH LINK UPDATER or FLASH LINK MOBILE tool, sold separately.

	Program bypass option IF THE VEHICLE IS NOT EQUIPPED WITH FUNCTIONAL HOOD PIN:	UNIT OPTION	DESCRIPTION
		A11	OFF
	Program bypass option:	UNIT OPTION	DESCRIPTION
		C1	OEM Remote status (Lock/Unlock) monitoring
		D6	Push-to-Start
	Program bypass option (if equipped with OEM alarm):	D2	Unlock before / Lock after (Disarm OEM alarm)

NOTES



1 KEY REQUIRED FOR THE INSTALLATION

2x diodes 1A
1x Relay
1x fuse

MANDATORY INSTALL

* HOOD PIN



HOOD STATUS: THE HOOD PIN SWITCH (INCLUDED) MUST BE INSTALLED IF THE VEHICLE CAN BE

A11

OFF

SECURITY STICKER







Included

Notice: the installation of safety elements are mandatory. The hood pin and the sticker are essential security elements and must be installed.

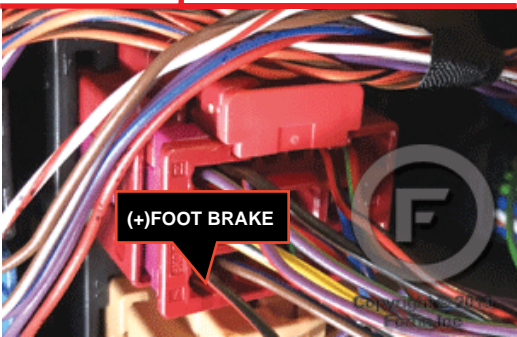
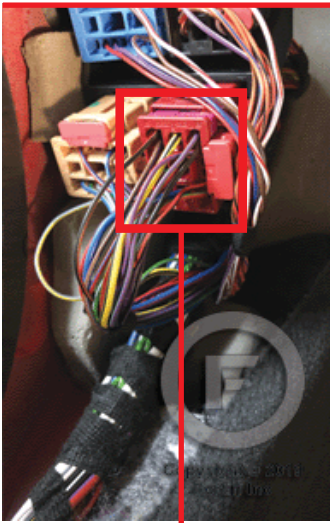
THIS MODULE MUST BE INSTALLED BY A QUALIFIED TECHNICIAN. A WRONG CONNECTION CAN CAUSE PERMANENT DAMAGE TO THE VEHICLE.

NOTES

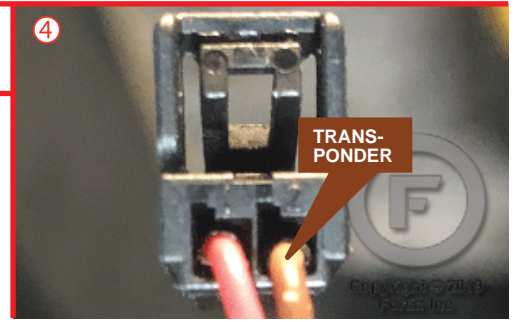
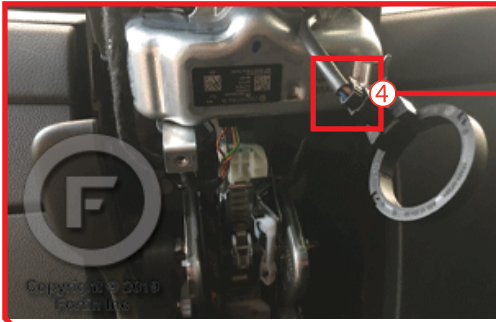
	<p>Program remote starter option for Diesel</p>	<p>FUNCTION</p> <p>18</p>	<p>MODE</p> <p>3</p>	<p>DESCRIPTION</p> <p>Enable (10 seconds) delay between Ignition power up and Starter (crank)</p>
	<p>Program remote starter option:</p>	<p>FUNCTION</p> <p>32</p>	<p>MODE</p> <p>6</p>	<p>DESCRIPTION</p> <p>Bypass control</p>
	<p>Program remote starter option for R.S. OEM REMOTE STAND ALONE:</p>	<p>FUNCTION</p> <p>38</p>	<p>MODE</p> <p>5</p>	<p>DESCRIPTION</p> <p>Enable (Press Lock, Unlock and Lock to remote start)</p>
	<p>Program remote starter option for COMFORT GROUP ACTIVATION:</p>	<p>FUNCTION</p> <p>39</p>	<p>MODE</p> <p>2</p>	<p>DESCRIPTION</p> <p>Temperature option : AUX.1 activated at 5°C, 5 seconds after remote started</p>

DESCRIPTION

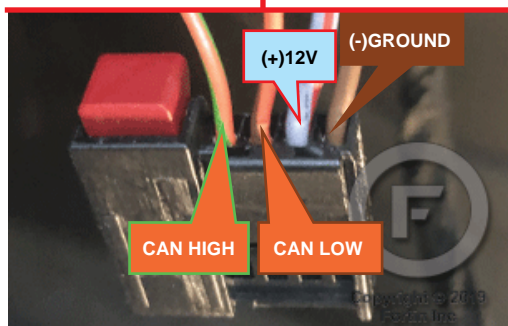
③ Driver kick panel



④ transponder connector



② Under steering column

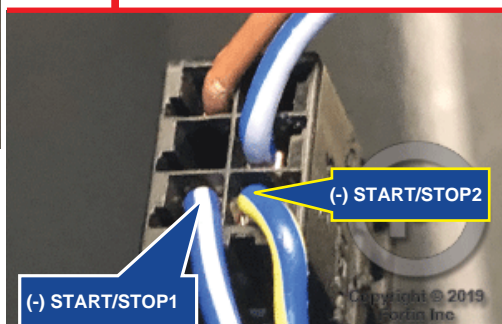


① push-to-start button.

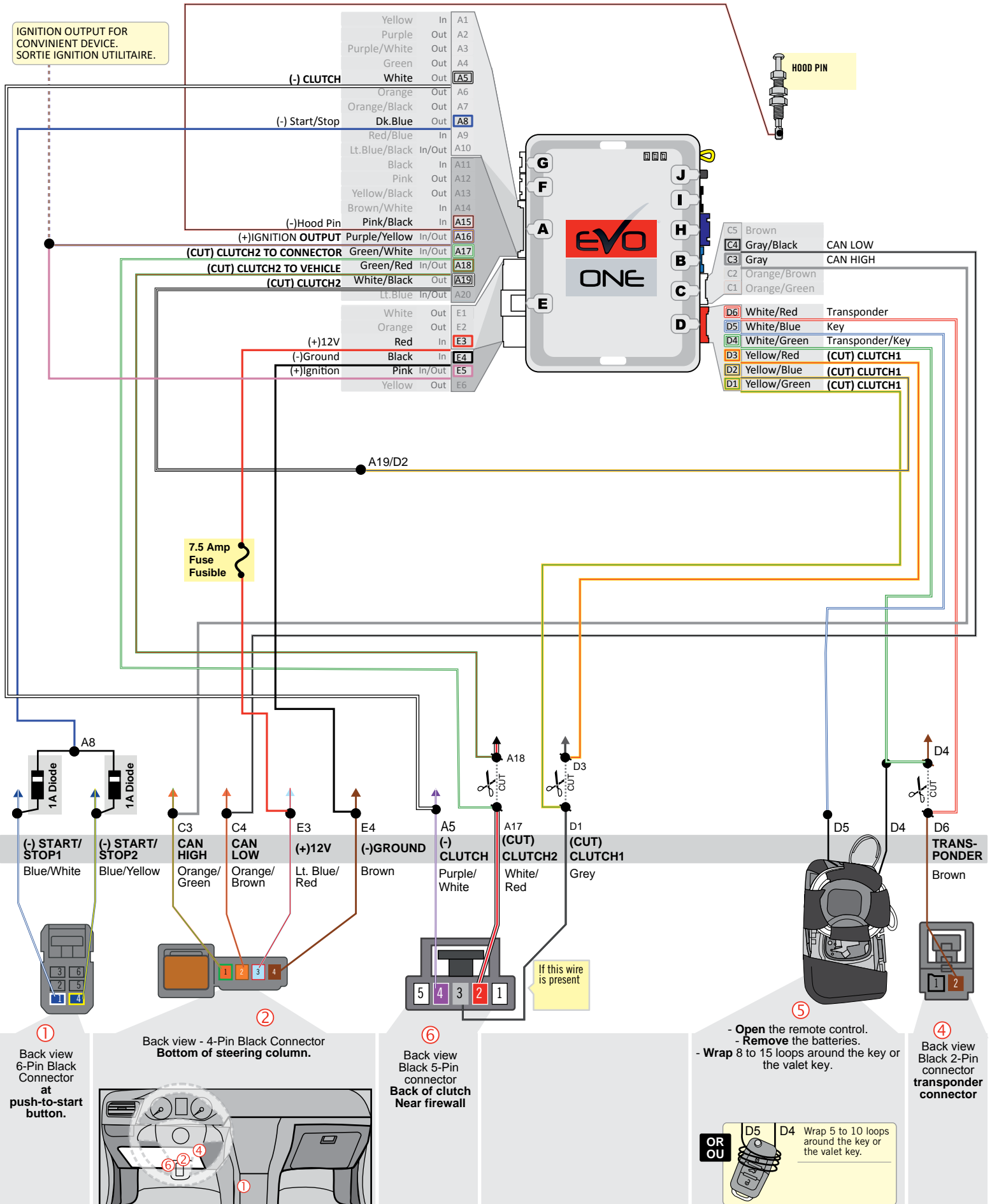


⑤

OR OR

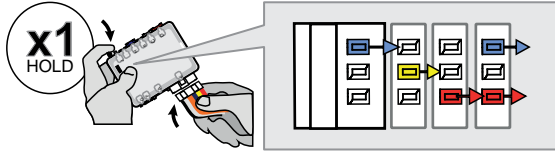


MANUAL TRANSMISSION WIRING CONNECTION |



KEY BYPASS PROGRAMMING PROCEDURE |

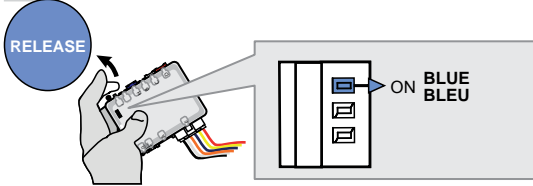
1



Press and hold the programming button:
Insert the 6-Pin Main connector.

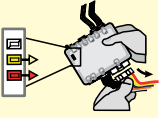
↳ The LEDs will alternate between BLUE, RED, YELLOW & BLUE/RED flashes.

2

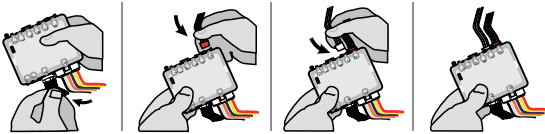


Release the programming button when the BLUE LED is ON.

Relâchez le bouton de programmation quand la DEL BLEUE est allumée.

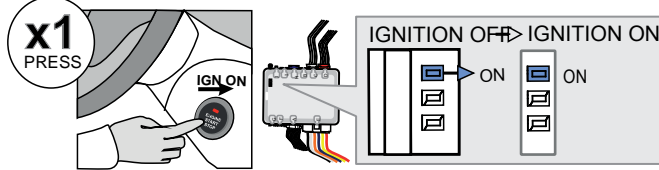


3



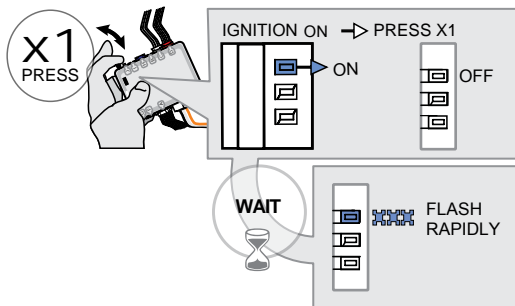
Insert the required remaining connectors.

4



Press the Push-to-Start button to turn ON the ignition.

5



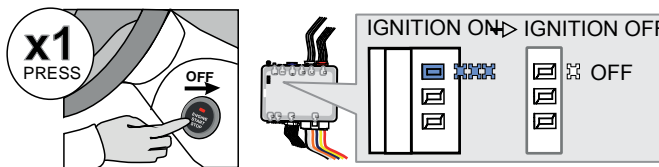
Press and release the programming button once (1x).

↳ The BLUE LED will turn off.

Wait,

↳ The BLUE LED will flash rapidly.

6



Press the Push-to-Start button once to turn off the ignition.

↳ The BLUE LED will turn off.

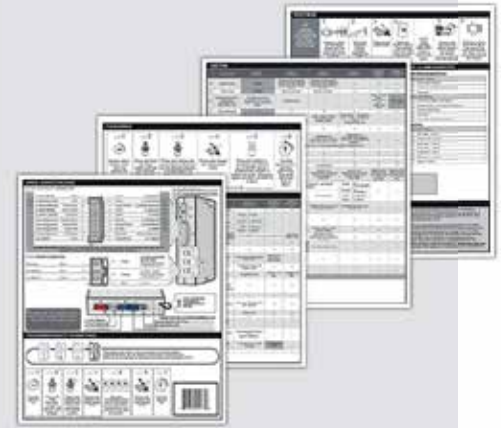


The module is now programmed.

REMOTE STARTER PROGRAMMING PROCEDURE |



REFER TO THE **QUICK INSTALL GUIDE** INCLUDED WITH THE MODULE FOR THE REMOTE STARTER PROGRAMMING.



REMOTE STARTER FUNCTIONALITY |



All doors must be closed.

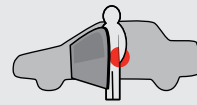


Remote start the vehicle.



Unlock the doors with either:

- The OEM remote
- The remote-starter remote.



Enter the vehicle with the Intelligent SmartKey.



The vehicle can now be put in to gear and driven.



If the vehicle is not unlocked, the module will shut down the remote-starter and the vehicle as soon as any door is opened.