


THAR-GM4 THARNESSE INSTALLATION

 ADDENDUM - SUGGESTED WIRING
CONFIGURATION

VEHICLE	YEARS	Vehicle functions supported in this diagram (functional if equipped)														
		Immobilizer bypass	T-Harness T-Harnais	Lock	Unlock	Arm	Disarm	Trunk (open)	Tachometer	Heated Seats	Door Status	Trunk Status	Hood Status	Hand-Brake Status	Foot-Brake Status	PK3, Passlock
CADILLAC																
Escalade	2007-2014	•	•	•	•	•	•	•	•	•	•	•	•	•	•	•
CHEVROLET																
Avalanche	2007-2013	•	•	•	•	•	•	•	•	•	•	•	•	•	•	•
Express Van	2008-2017	•	•	•	•	•	•	•	•	•	•	•	•	•	•	•
Express 2500	2008-2016	•	•	•	•	•	•	•	•	•	•	•	•	•	•	•
Express 3500	2008-2016	•	•	•	•	•	•	•	•	•	•	•	•	•	•	•
Silverado 1500	2007-2013	•	•	•	•	•	•	•	•	•	•	•	•	•	•	•
Silverado 2500 Premium Package	2007-2014	•	•	•	•	•	•	•	•	•	•	•	•	•	•	•
Silverado 3500 Premium Package	2007-2014	•	•	•	•	•	•	•	•	•	•	•	•	•	•	•
Silverado Hybrid Premium Package	2007-2013	•	•	•	•	•	•	•	•	•	•	•	•	•	•	•
Suburban	2007-2014	•	•	•	•	•	•	•	•	•	•	•	•	•	•	•
Tahoe	2007-2014	•	•	•	•	•	•	•	•	•	•	•	•	•	•	•
GMC																
Savana	2008-2020	•	•	•	•	•	•	•	•	•	•	•	•	•	•	•
Sierra 1500 Premium Package	2007-2013	•	•	•	•	•	•	•	•	•	•	•	•	•	•	•
Sierra 2500 Premium Package	2007-2014	•	•	•	•	•	•	•	•	•	•	•	•	•	•	•
Sierra 3500 Premium Package	2007-2014	•	•	•	•	•	•	•	•	•	•	•	•	•	•	•
Sierra HD	2007-2014	•	•	•	•	•	•	•	•	•	•	•	•	•	•	•
Yukon	2007-2014	•	•	•	•	•	•	•	•	•	•	•	•	•	•	•




FIRMWARE VERSION

70.[41]


GM MINIMUM

To add the firmware version and the options, use the **FLASH LINK UPDATER** or **FLASH LINK MOBILE** tool, sold separately.

IF THE VEHICLE IS NOT EQUIPPED WITH FUNCTIONAL HOOD PIN:	A11	OFF	Hood trigger (Output Status).
 <p>Program bypass option:</p>	C1		UNIT OPTION DESCRIPTION OEM Remote status (Lock/Unlock) monitoring

MANDATORY INSTALL

***HOOD PIN**



HOOD STATUS: THE HOOD PIN SWITCH MUST BE INSTALLED IF THE VEHICLE CAN BE REMOTE STARTED WITH THE HOOD OPEN, SET FUNCTION **A11** TO OFF.

A11

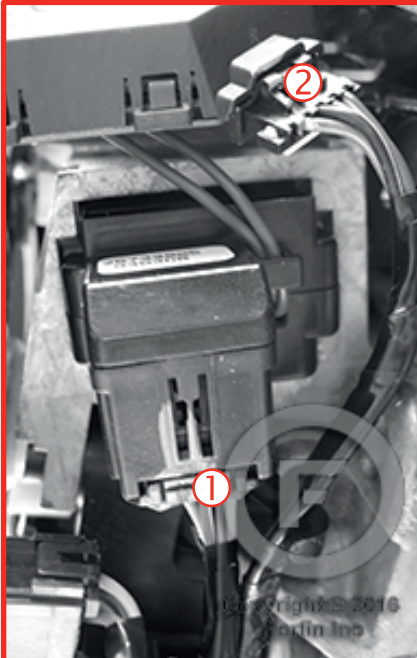
OFF

Notice: the installation of safety elements are mandatory. The hood pin is an essential security element and must be installed.

THIS MODULE MUST BE INSTALLED BY A QUALIFIED TECHNICIAN. A WRONG CONNECTION CAN CAUSE PERMANENT DAMAGE TO THE VEHICLE.

DESCRIPTION

① ② Ignition Barrel



① Ignition connector*



② Transponder connector

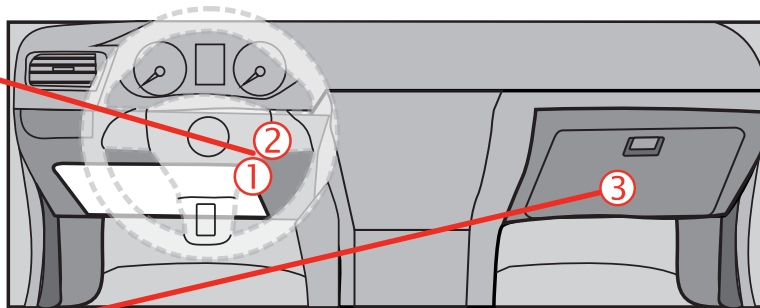


12V BATTERY



ATTENTION THE T-HARNESS CURRENT IS LIMITED AT 2 AMP MAXIMUM.

If the parking lights (+) require more than 2Amp. connect the remote-starter's power directly to the vehicles battery with the appropriate fuse.



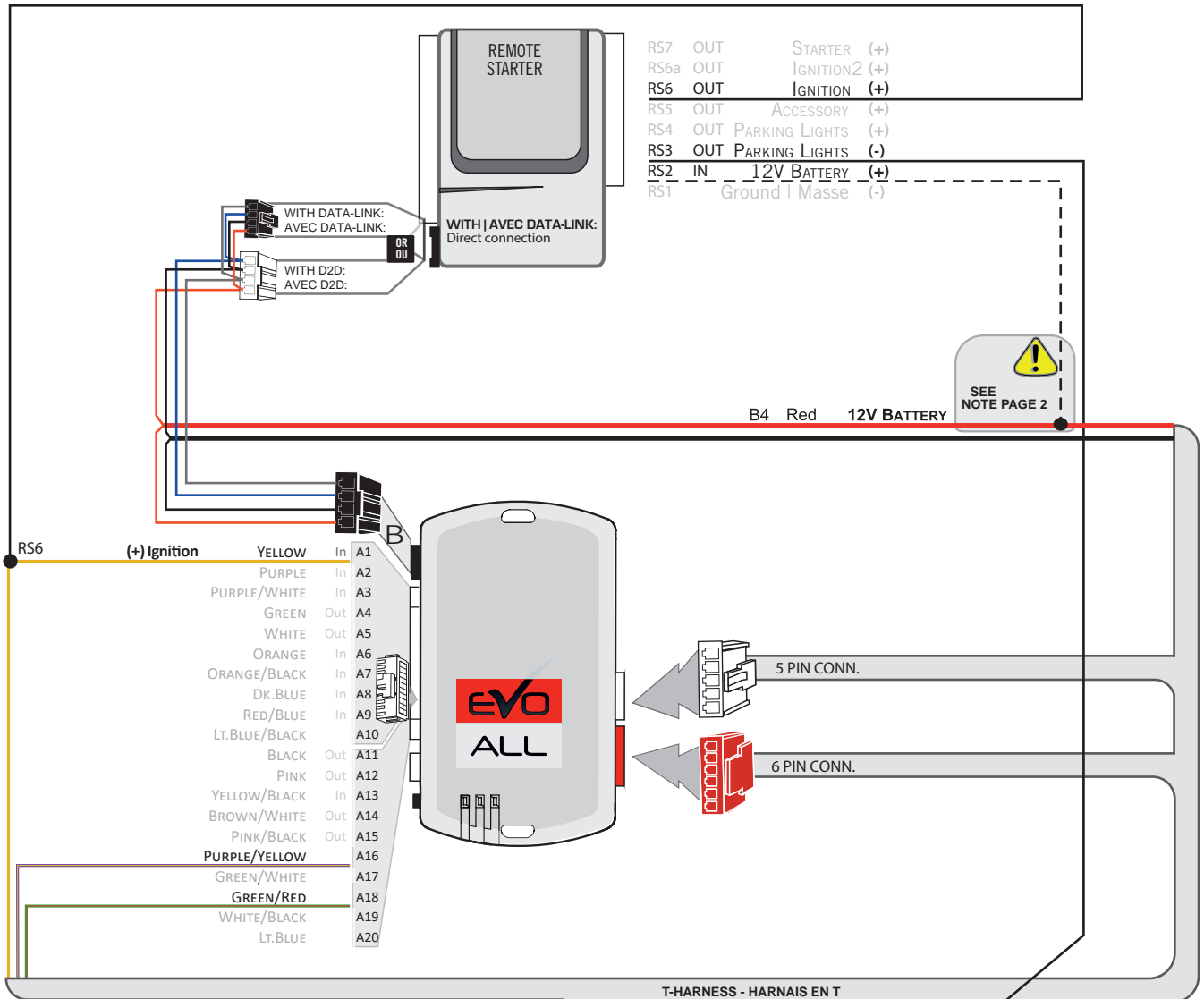
③ BCM Passenger's side dash



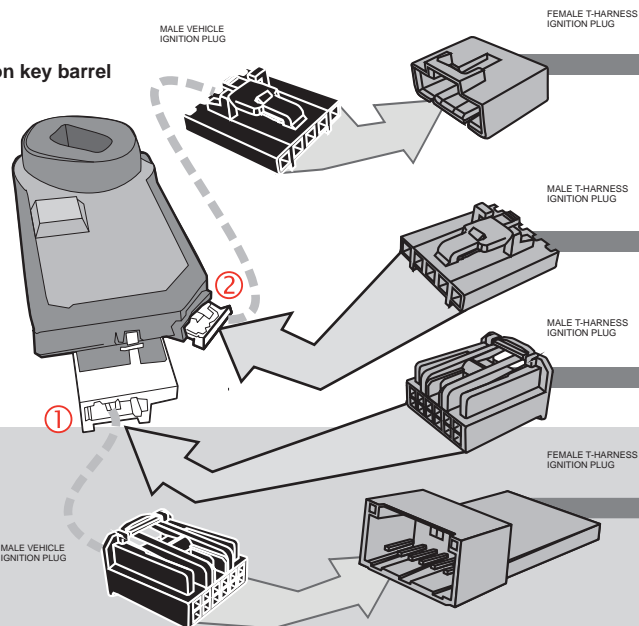
(-)PARKING LIGHTS



WIRING CONNECTION WITH DATA-LINK



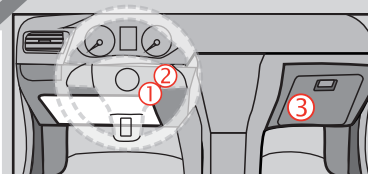
Ignition key barrel



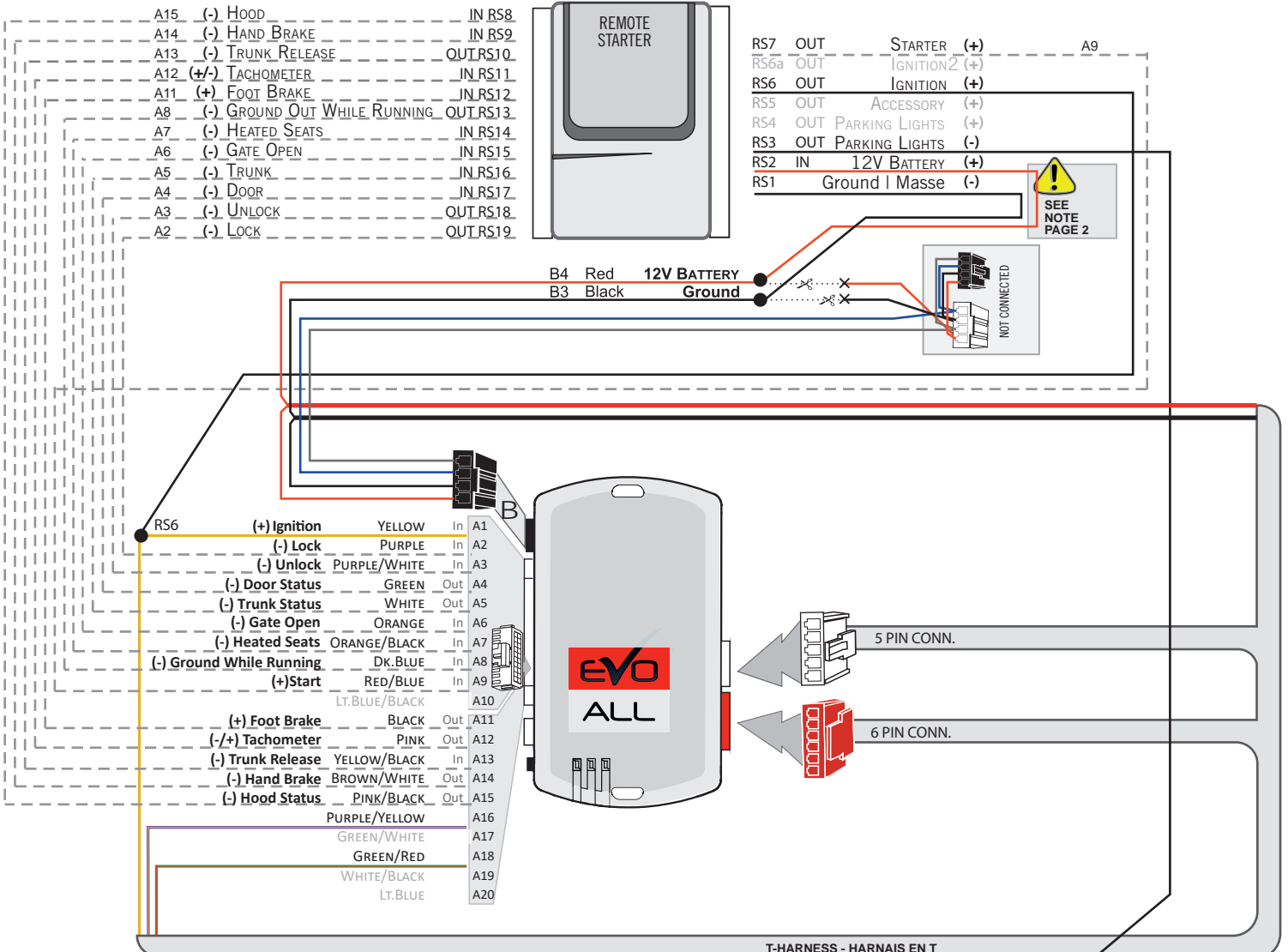
RS3
(-)PARKING LIGHTS
Lt. Blue



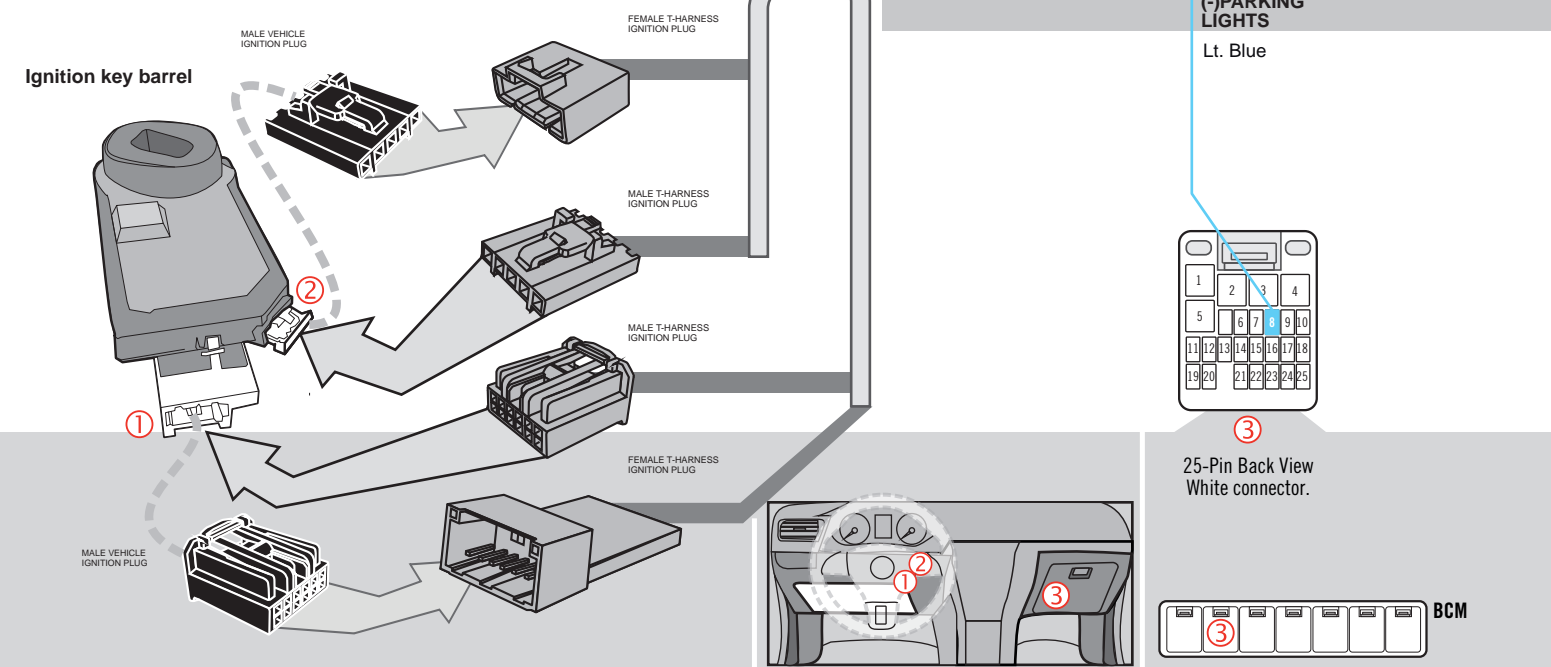
25-Pin Back View
White connector.



WIRING CONNECTION WITHOUT DATA-LINK

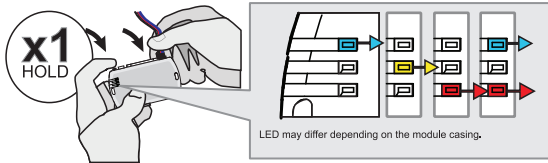


Ignition key barrel



KEY BYPASS PROGRAMMING PROCEDURE 1/2

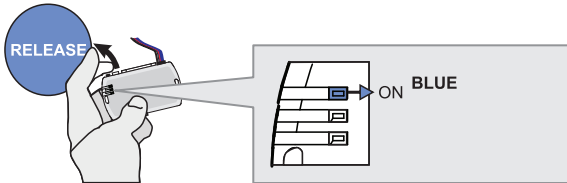
1



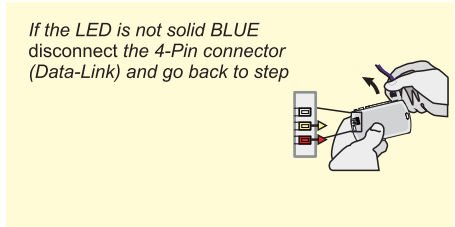
Press and hold the programming button:
Connect the 4-PIN Data-link harness (Black connector).

↳ The Blue, Red, Yellow and Blue & Red LEDs will alternatively illuminate.

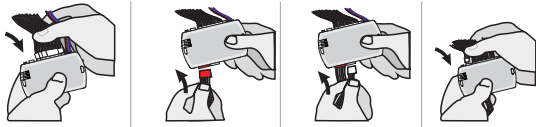
2



Release the programming button when the LED is BLUE.

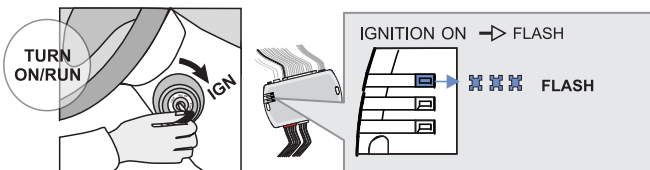


3



Insert the required remaining connectors.

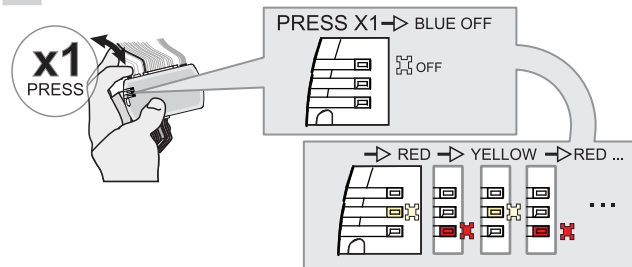
4



Turn the key to the Ignition ON/RUN position.

↳ The Blue LED will flash rapidly.

5

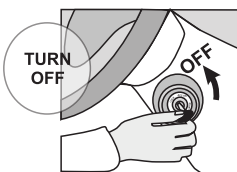


Press and release the programming button once (1x).

↳ The Blue LED will turn OFF.

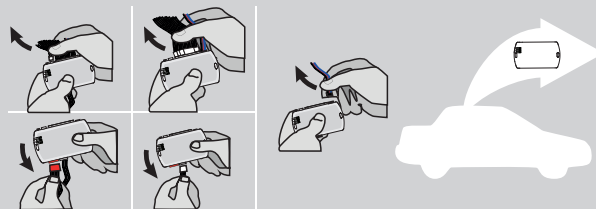
↳ The YELLOW and RED LEDs will alternate..

6



Turn the key to the OFF position.

7



Disconnect all the connectors and after the Data-Link (4-pins) connector.

THAR-GM4 THARNES INSTALLATION

ADDENDUM - SUGGESTED WIRING CONFIGURATION

VEHICLE	YEARS	Vehicle functions supported in this diagram (functional if equipped)																	
		Immobilizer bypass	T-Harness T-Harnais	Lock	Unlock	Arm	Disarm	Trunk (open)	Parking Lights	RAP Disable	Tachometer	Heated Seats	Door Status	Trunk Status	Hood Status	Hand-Brake Status	Foot-Brake Status	PK3, Passlock	OEM Remote monitoring
CHEVROLET																			
Silverado 1500 Premium Package	2007-2013	•	•	•	•	•	•	•	•	•	•	•	•	•	•	•	•	•	•
Silverado 2500	2007-2014	•	•	•	•	•	•	•	•	•	•	•	•	•	•	•	•	•	•
Silverado 3500	2007-2014	•	•	•	•	•	•	•	•	•	•	•	•	•	•	•	•	•	•
Silverado Hybrid	2007-2013	•	•	•	•	•	•	•	•	•	•	•	•	•	•	•	•	•	•
GMC																			
Sierra 1500	2007-2013	•	•	•	•	•	•	•	•	•	•	•	•	•	•	•	•	•	•
Sierra 2500	2007-2014	•	•	•	•	•	•	•	•	•	•	•	•	•	•	•	•	•	•
Sierra 3500	2007-2014	•	•	•	•	•	•	•	•	•	•	•	•	•	•	•	•	•	•

FIRMWARE VERSION

70.[41]

GM MINIMUM

To add the firmware version and the options, use the **FLASH LINK UPDATER** or **FLASH LINK MOBILE** tool, sold separately.

IF THE VEHICLE IS NOT EQUIPPED WITH FUNCTIONAL HOOD PIN:	A11	OFF	Hood trigger (Output Status).
	Program bypass option:		UNIT OPTION C1
		DESCRIPTION OEM Remote status (Lock/Unlock) monitoring	

MANDATORY INSTALL
***HOOD PIN**


HOOD STATUS: THE HOOD PIN SWITCH MUST BE INSTALLED IF THE VEHICLE CAN BE REMOTE STARTED WITH THE HOOD OPEN, SET FUNCTION **A11** TO OFF.

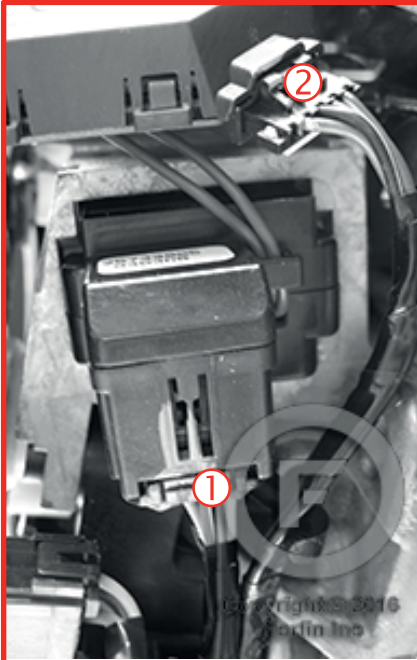
A11
OFF

Notice: the installation of safety elements are mandatory. The hood pin is an essential security element and must be installed.

THIS MODULE MUST BE INSTALLED BY A QUALIFIED TECHNICIAN. A WRONG CONNECTION CAN CAUSE PERMANENT DAMAGE TO THE VEHICLE.

DESCRIPTION

① ② Ignition Barrel



① Ignition connector*



② Transponder connector



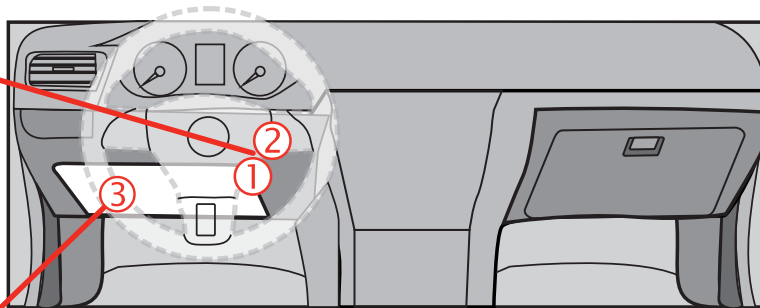
12V BATTERY



ATTENTION THE T-HARNESS CURRENT IS LIMITED AT 2 AMP MAXIMUM.

If the parking lights (+) require more than 2Amp, connect the remote-starter's power directly to the vehicles battery with the appropriate fuse.

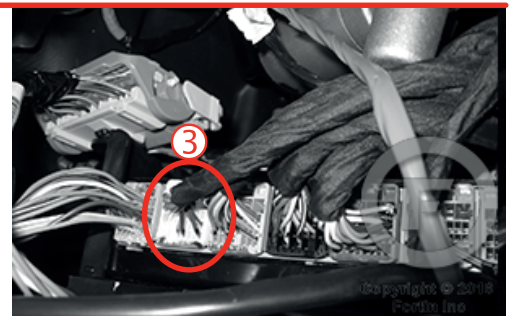
Some remote starters can not be powered through Data-Link. In these cases connect the remote starter's fused 12V power wire directly to the T-Harness.



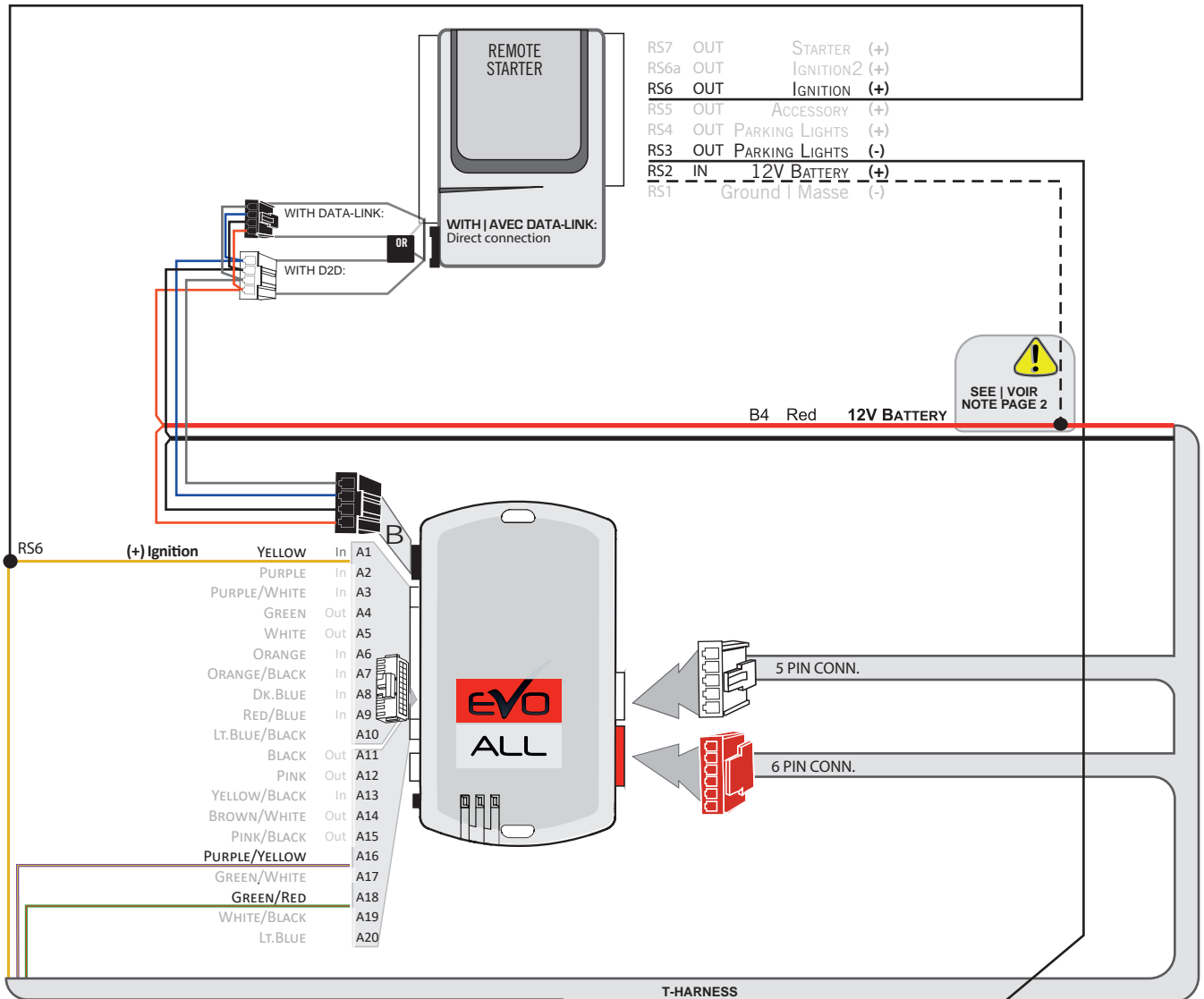
③ BCM Driver's side dash



(-) PARKING LIGHTS

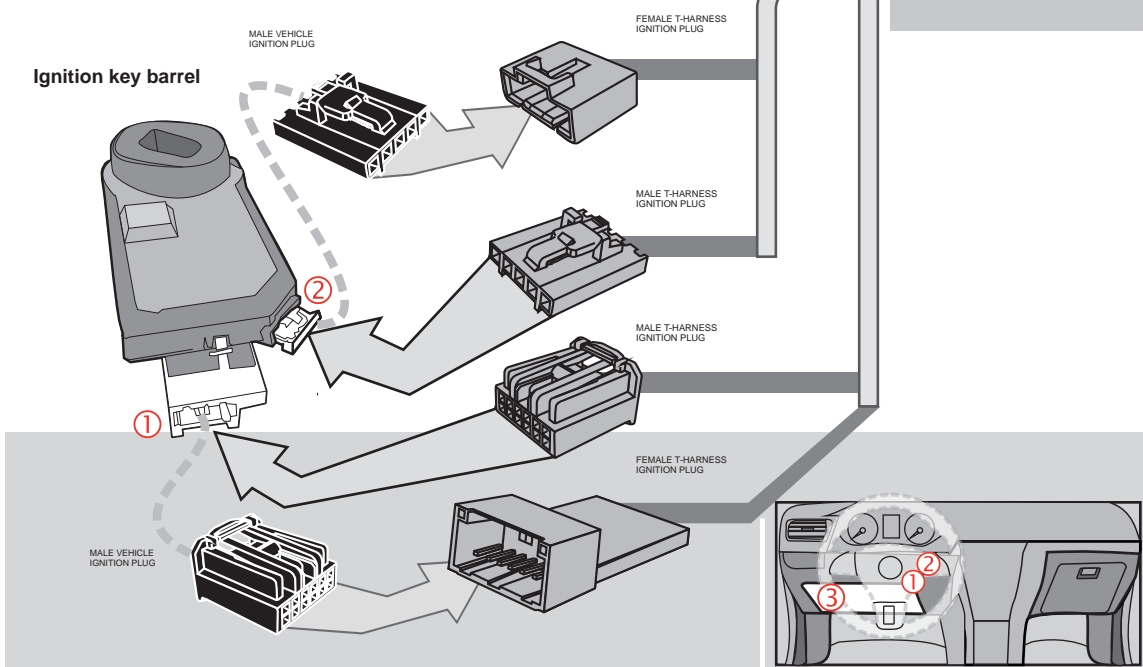


WIRING CONNECTION WITH DATA-LINK

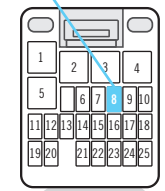


SEE | VOIR NOTE PAGE 2

Ignition key barrel



RS3
(-)PARKING LIGHTS
Lt. Blue

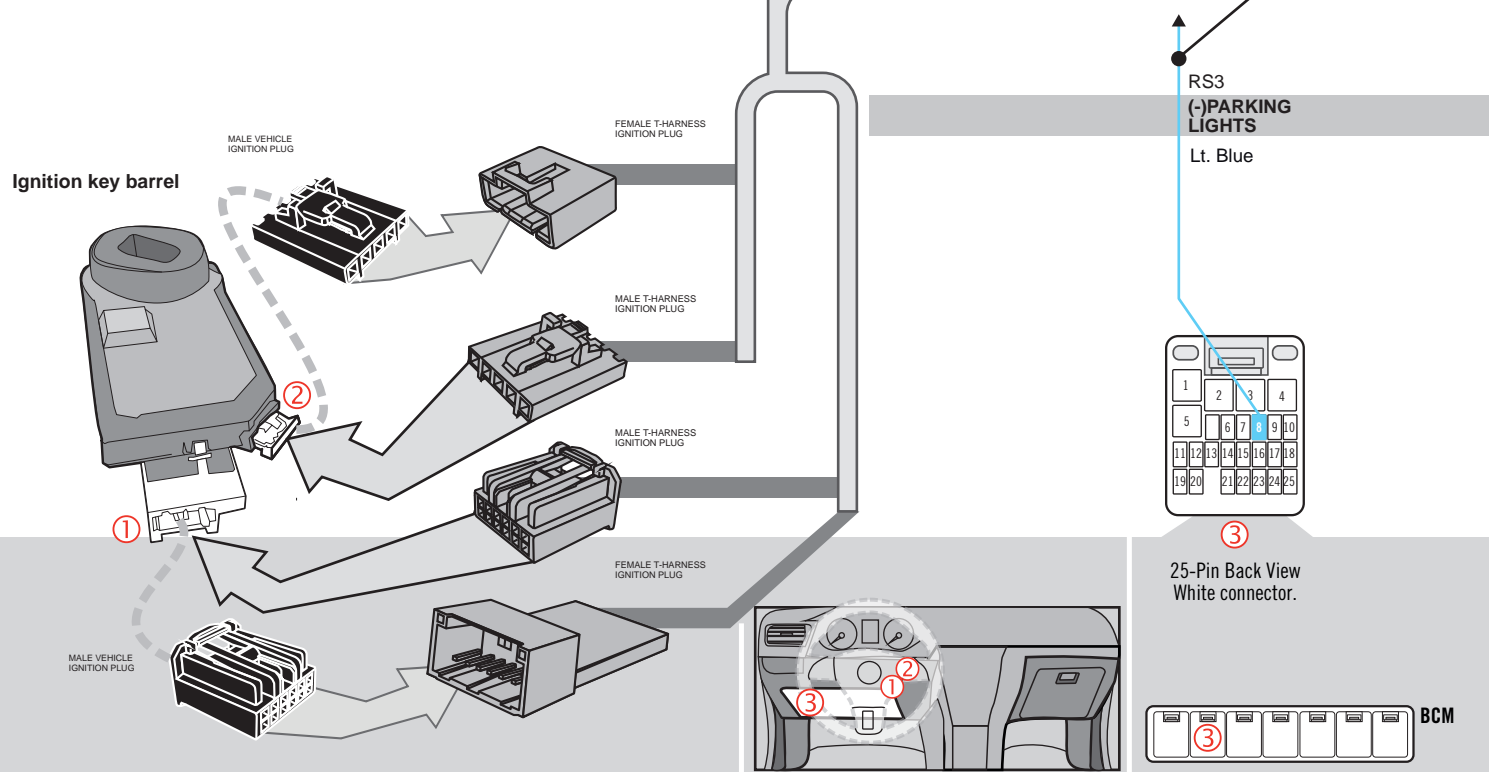
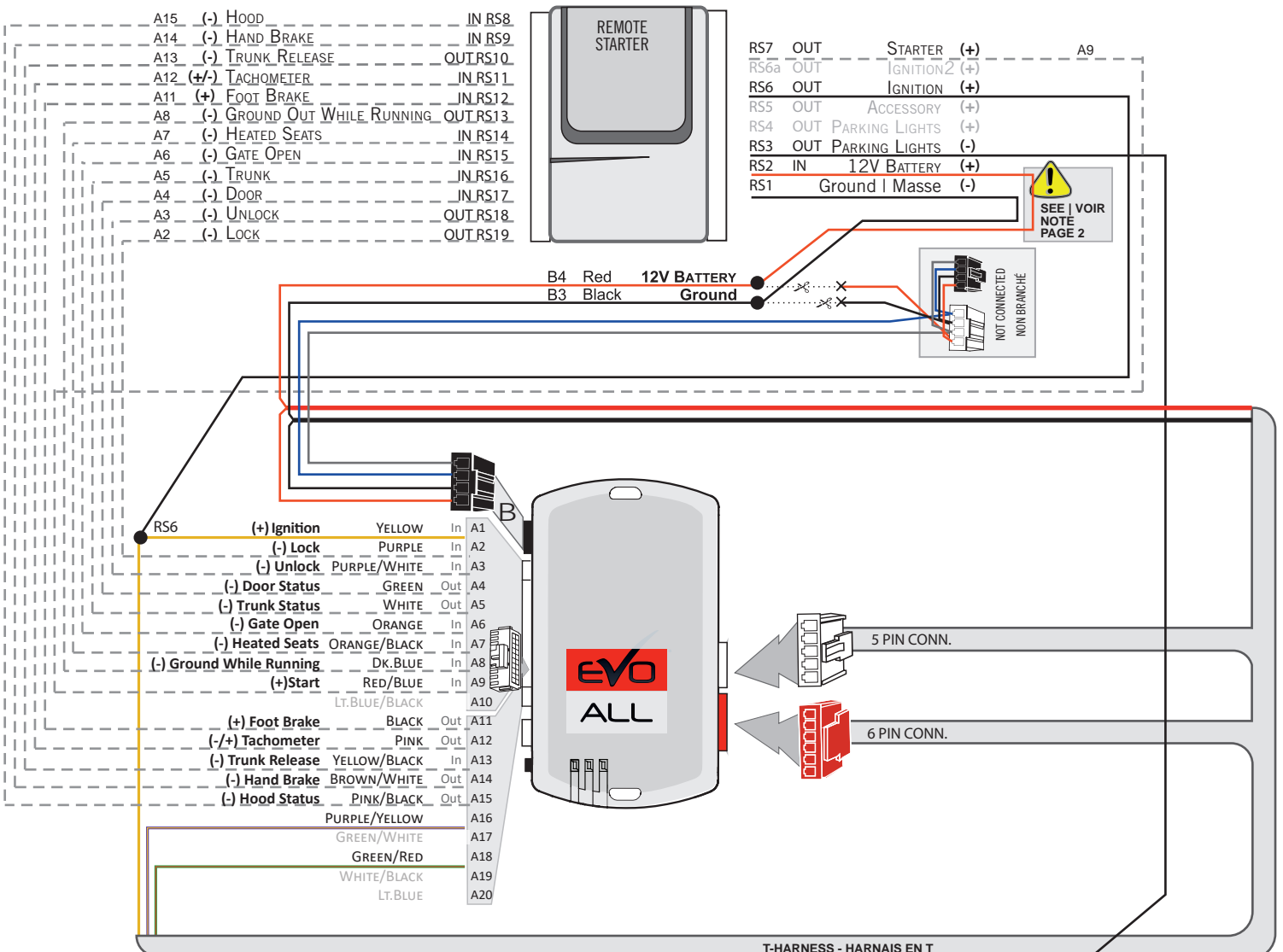


25-Pin Back View White connector.



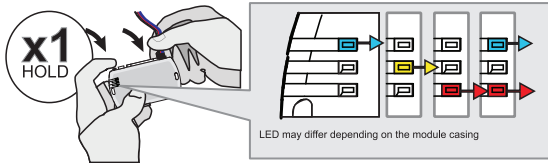
BCM

WIRING CONNECTION WITHOUT DATA-LINK



KEY BYPASS PROGRAMMING PROCEDURE 1/2

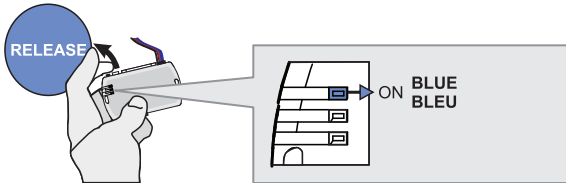
1



Press and hold the programming button:
Connect the 4-PIN Data-link harness (Black connector).

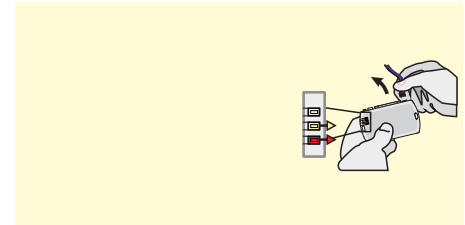
↳ The Blue, Red, Yellow and Blue & Red LEDs will alternatively illuminate.

2

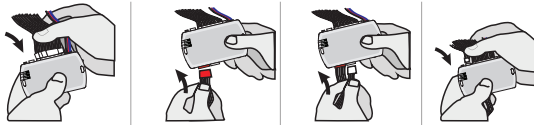


Release the programming button when the LED is BLUE.

Relâchez le bouton de programmation quand la DEL est BLEU.

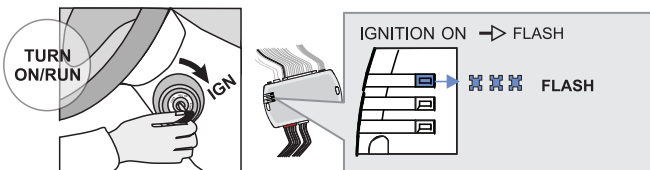


3



Insert the required remaining connectors.

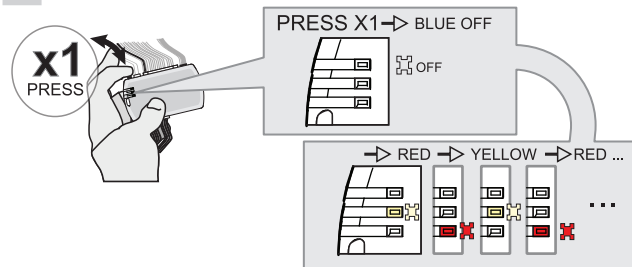
4



Turn the key to the Ignition ON/RUN position.

↳ The Blue LED will flash rapidly.

5

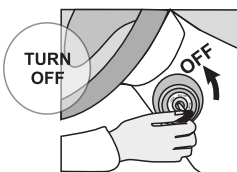


Press and release the programming button once (1x).

↳ The Blue LED will turn OFF.

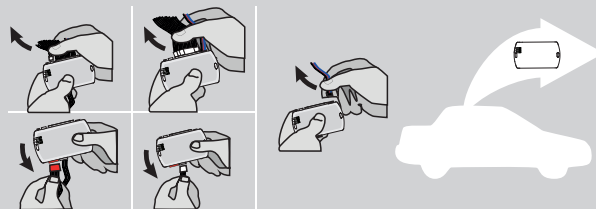
↳ The YELLOW and RED LEDs will alternate..

6



Turn the key to the OFF position.

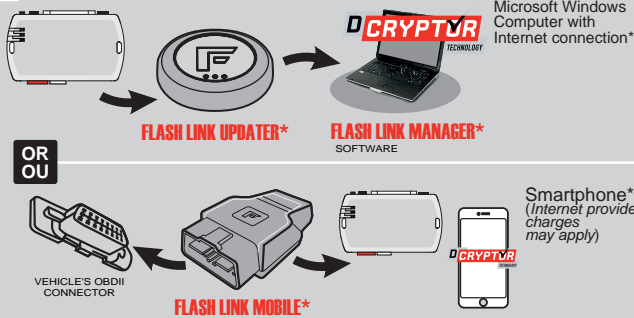
7



Disconnect all the connectors and after the Data-Link (4-pins) connector.

KEY BYPASS PROGRAMMING PROCEDURE 2/2

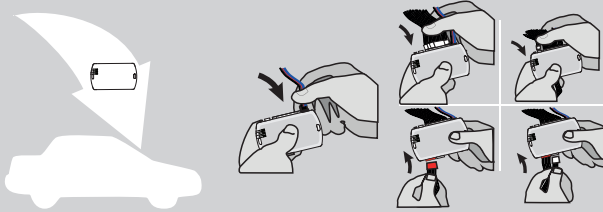
8



Use the tool: **FLASH LINK UPDATER** or **FLASH LINK MOBILE** to visit the DCryptor menu.

*Parts required (not included)

9



AFTER DCRYPTOR PROGRAMMING COMPLETED
Go back to the vehicle and **reconnect** the 4-Pin (Data-Link) connector and after, all the remaining connector.



The module is now programmed.



REMOTE STARTER / ALARM VERIFICATION PROCEDURE

Test the remote starter. Remote start the vehicle.

THAR-GM4 THARNNESS STAND ALONE INSTALLATION

ADDENDUM - SUGGESTED WIRING CONFIGURATION



ONLY COMPATIBLE WITH AUTOMATIC TRANSMISSION VEHICLES.

VEHICLE	YEARS	Vehicle functions supported in this diagram (functional if equipped)															
		Immobilizer bypass	T-Harness T-Harnais	Lock	Unlock	Arm	Disarm	Trunk (open)	Tachometer	Heated Seats	Door Status	Trunk Status	Hood Status	Hand-Brake Status	Foot-Brake Status	PK3, Passlock	OEM Remote monitoring
CADILLAC																	
Escalade	2007-2014	•	•	•	•	•	•	•	•	•	•	•	•	•	•	•	•
CHEVROLET																	
Avalanche	2007-2013	•	•	•	•	•	•	•	•	•	•	•	•	•	•	•	•
Express Van	2008-2017	•	•	•	•	•	•	•	•	•	•	•	•	•	•	•	•
Express 2500	2008-2016	•	•	•	•	•	•	•	•	•	•	•	•	•	•	•	•
Express 3500	2008-2016	•	•	•	•	•	•	•	•	•	•	•	•	•	•	•	•
Silverado 1500	2007-2013	•	•	•	•	•	•	•	•	•	•	•	•	•	•	•	•
Silverado 2500 Premium Package	2007-2014	•	•	•	•	•	•	•	•	•	•	•	•	•	•	•	•
Silverado 3500 Premium Package	2007-2014	•	•	•	•	•	•	•	•	•	•	•	•	•	•	•	•
Silverado Hybrid Premium Package	2007-2013	•	•	•	•	•	•	•	•	•	•	•	•	•	•	•	•
Suburban	2007-2014	•	•	•	•	•	•	•	•	•	•	•	•	•	•	•	•
Tahoe	2007-2014	•	•	•	•	•	•	•	•	•	•	•	•	•	•	•	•
GMC																	
Savana	2008-2020	•	•	•	•	•	•	•	•	•	•	•	•	•	•	•	•
Sierra 1500 Premium Package	2007-2013	•	•	•	•	•	•	•	•	•	•	•	•	•	•	•	•
Sierra 2500 Premium Package	2007-2014	•	•	•	•	•	•	•	•	•	•	•	•	•	•	•	•
Sierra 3500 Premium Package	2007-2014	•	•	•	•	•	•	•	•	•	•	•	•	•	•	•	•
Sierra HD	2007-2014	•	•	•	•	•	•	•	•	•	•	•	•	•	•	•	•
Yukon	2007-2014	•	•	•	•	•	•	•	•	•	•	•	•	•	•	•	•

FIRMWARE VERSION

70.[45]

GM MINIMUM

To add the firmware version and the options, use the **FLASH LINK UPDATER** or **FLASH LINK MOBILE** tool, sold separately.

	<p>IF THE VEHICLE IS NOT EQUIPPED WITH FUNCTIONAL HOOD PIN:</p> <p style="font-size: 24px; font-weight: bold; color: red;">A11</p> <p style="font-size: 18px; font-weight: bold; color: red; background-color: red; padding: 2px;">OFF</p>	<p>Hood trigger (Output Status).</p>
<p>Program bypass option:</p>	<p>UNIT OPTION</p> <p style="font-size: 24px; font-weight: bold; color: red;">C1</p>	<p>DESCRIPTION</p> <p>OEM Remote status (Lock/Unlock) monitoring</p>

MANDATORY INSTALL

*HOOD PIN

HOOD STATUS: THE HOOD PIN SWITCH MUST BE INSTALLED IF THE VEHICLE CAN BE REMOTE STARTED WITH THE HOOD OPEN, SET FUNCTION A11 TO OFF.

A11

OFF

Notice: the installation of safety elements are mandatory. The hood pin is an essential security element and must be installed.

THIS MODULE MUST BE INSTALLED BY A QUALIFIED TECHNICIAN. A WRONG CONNECTION CAN CAUSE PERMANENT DAMAGE TO THE VEHICLE.

PARTS REQUIRED (NOT INCLUDED)


1x **FLASH LINK UPDATER,**
1x **FLASH LINK MANAGER**
SOFTWARE
1x Microsoft Windows Computer with Internet connection

OR

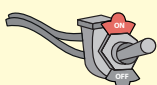
1x **FLASH LINK MOBILE**
1x **FLASH LINK MOBILE APP**
Smartphone *Android* or *iOS* with Internet connection (*provider charges may apply*).

MANDATORY

HOOD PIN



REMOTE START SAFETY OVERRIDE SWITCH


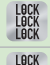





VALET SWITCH


Part #: RSPB available, Sold separately.

Notice: the installation of safety elements are mandatory. The hood pin and the valet switch are essential security elements and must be installed.


STAND ALONE CONFIGURATION

	Program bypass option	UNIT OPTION	DESCRIPTION
	OEM Remote Stand Alone Remote Starter:	D1.10 	By default, LOCK, LOCK, LOCK Par défaut, VERROUILLE,VERROUILLE,VERROUILLE
		D1.1 	
	Program bypass option with oem remote:	C1	OEM Remote Monitoring
	Program bypass option with RF KIT antenna:	H1 to H6	Supported RF Kits and select RF Kit


REMOTE STARTER FUNCTIONALITY



All doors must be closed.

3X 

Press the OEM remote's Lock button 3x to remote-start (or remote-stop) the vehicle.




The vehicle will START.

REMOTE STARTER DIAGNOSTICS
MODULE RED LED


x2 flash :	Brake ON
x3 flash :	No tach
x4 flash :	Ignition before start
x5 flash :	Hood Open

REMOTE STARTER WARNING CARD



CUT THIS WARNING CARD AND STICK IT ON A VISIBLE PLACE:
or use the package **RSPB**, Sold separately.

WARNING | ATTENTION

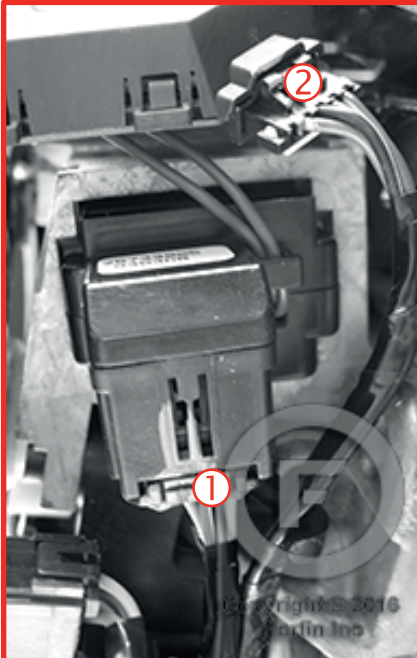


REMOTE STARTER

THE VEHICLE CAN BE STARTED BY EITHER: PRESSING THE LOCK BUTTON ON THE OEM REMOTE 3 TIMES CONSECUTIVELY OR BY A SMARTPHONE. **TURN ON** THE SAFETY SWITCH LOCATED UNDER THE DASHBOARD BEFORE WORKING ON THE VEHICLE.

DESCRIPTION

① ② Ignition Barrel



① Ignition connector*



② Transponder connector



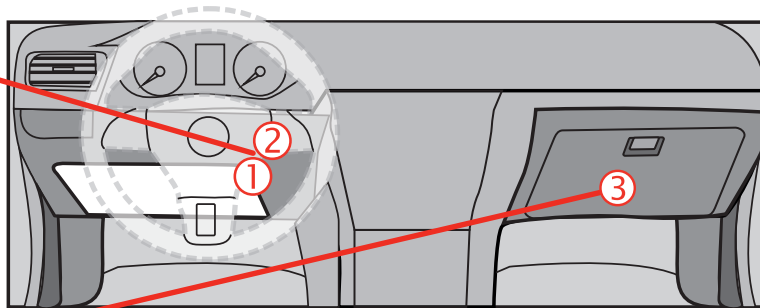
12V BATTERY



ATTENTION THE T-HARNESS CURRENT IS LIMITED AT 2 AMP MAXIMUM.

If the parking lights (+) require more than 2Amp. connect the remote-starter's power directly to the vehicles battery with the appropriate fuse.

Some remote starters can not be powered through Data-Link. In these cases connect the remote starter's fused 12V power wire directly to the T-Harness.



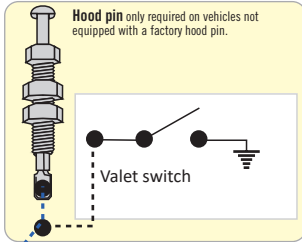
③ BCM Passenger's side dash



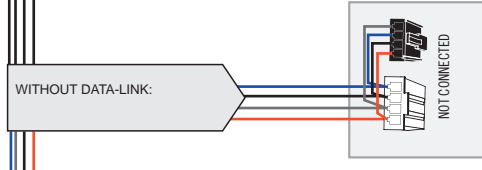
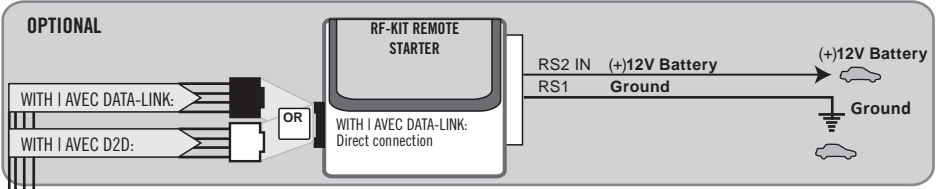
(-)PARKING LIGHTS



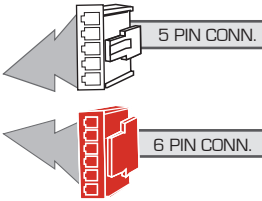
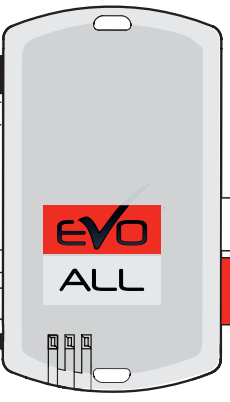
AUTOMATIC TRANSMISSION WIRING CONNECTION



Start / Stop external control
 (-) Lock/Unlock input external control

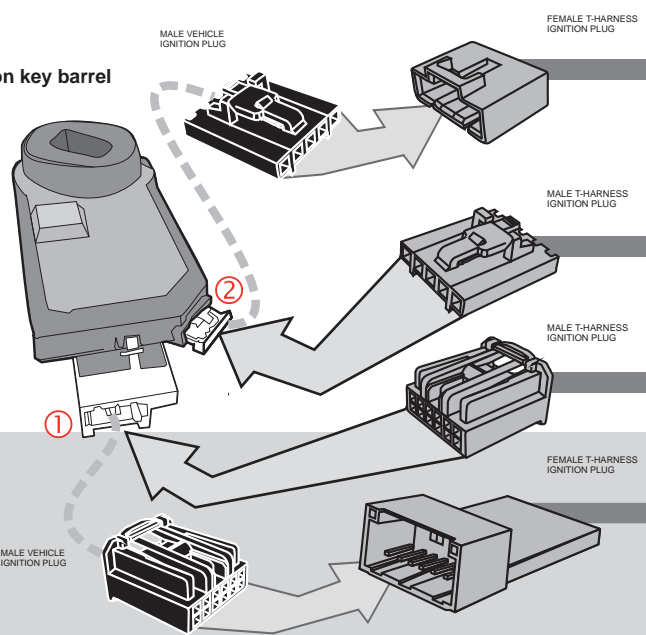


YELLOW	In	A1
(-) Lock	In	A2
(-) Unlock	In	A3
GREEN	Out	A4
WHITE	Out	A5
ORANGE	In	A6
Orange/Black	In	A7
Hood pin	In	A8
Dk. Blue	In	A9
Red/Blue	In	A10
Lt. Blue/Black	In	A10
BLACK	Out	A11
PINK	Out	A12
Start/Stop external	In	A13
(-) Parking Lights	Out	A14
(-) Trunk Output	Out	A15
PURPLE/YELLOW	Out	A16
GREEN/WHITE	Out	A17
GREEN/RED	Out	A18
WHITE/BLACK	Out	A19
Lt. Blue	Out	A20

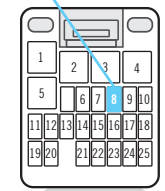


T-HARNESS

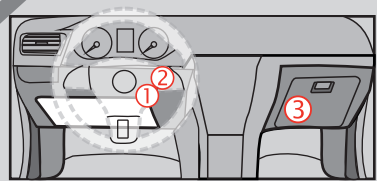
Ignition key barrel



A14
 (-) PARKING LIGHTS
 Lt. Blue

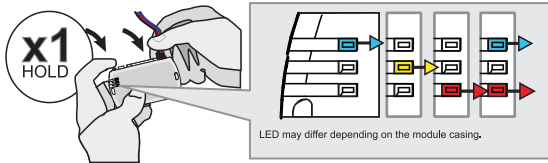


25-Pin Back View White connector.



KEY BYPASS PROGRAMMING PROCEDURE 1/2

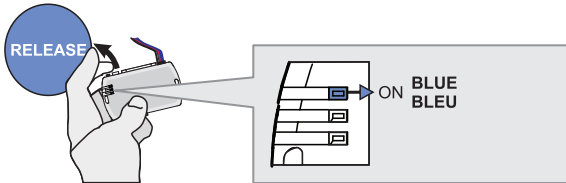
1



Press and hold the programming button:
Connect the 4-PIN Data-link harness (Black connector).

↳ The Blue, Red, Yellow and Blue & Red LEDs will alternatively illuminate.

2

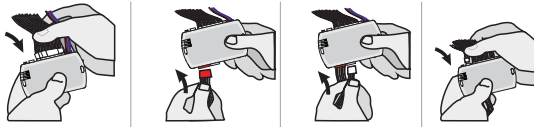


Release the programming button when the LED is BLUE.

Relâchez le bouton de programmation quand la DEL est BLEU.

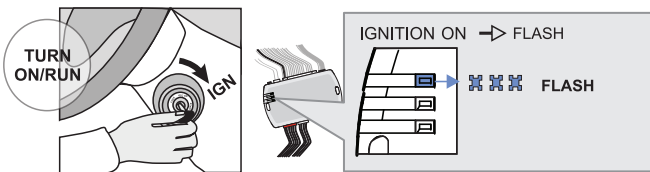
If the LED is not solid BLUE disconnect the 4-Pin connector (Data-Link) and go back to step 1.

3



Insert the required remaining connectors.

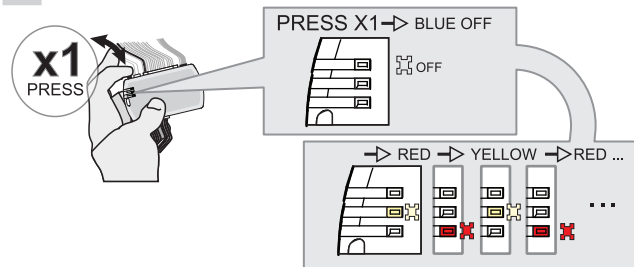
4



Turn the key to the Ignition ON/RUN position.

↳ The Blue LED will flash rapidly.

5

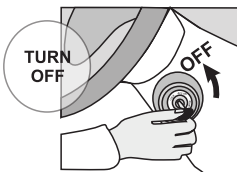


Press and release the programming button once (1x).

↳ The Blue LED will turn OFF.

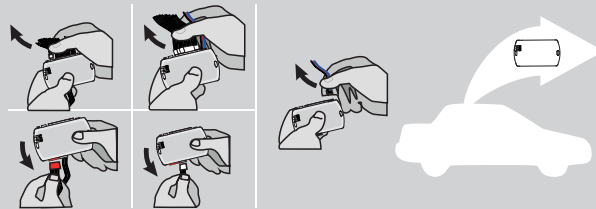
↳ The YELLOW and RED LEDs will alternate..

6



Turn the key to the OFF position.

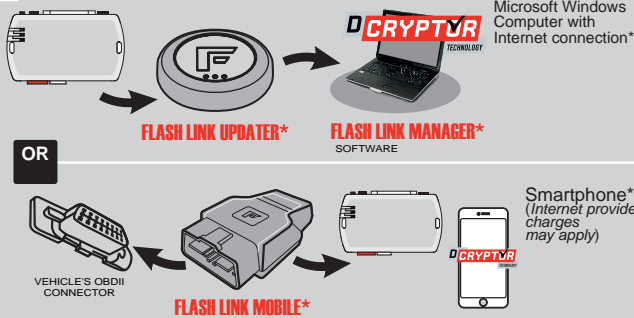
7



Disconnect all the connectors and after the Data-Link (4-pins) connector.

KEY BYPASS PROGRAMMING PROCEDURE 2/2

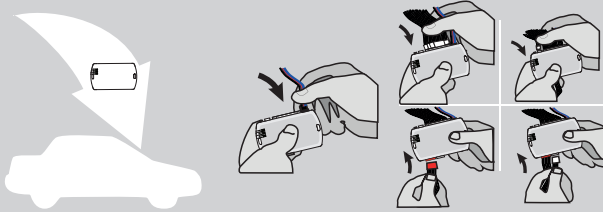
8



Use the tool: **FLASH LINK UPDATER** or **FLASH LINK MOBILE** to visit the DCryptor menu.

*Parts required (not included)

9



AFTER DCRYPTOR PROGRAMMING COMPLETED
Go back to the vehicle and **reconnect** the 4-Pin (Data-Link) connector and after, all the remaining connector.



The module is now programmed.



REMOTE STARTER / ALARM VERIFICATION PROCEDURE

Test the remote starter. Remote start the vehicle.

THAR-GM4 THARNNESS STAND ALONE INSTALLATION


ADDENDUM - SUGGESTED WIRING CONFIGURATION



ONLY COMPATIBLE WITH AUTOMATIC TRANSMISSION VEHICLES.

Vehicle functions supported in this diagram (functional if equipped)

VEHICLE	YEARS	Immobilizer bypass	T-Harness T-Harnais	Lock	Unlock	Arm	Disarm	Trunk (open)	Parking Lights	RAP Disable	Tachometer	Heated Seats	Door Status	Trunk Status	Hood Status	Hand-Brake Status	Foot-Brake Status	PK3, Passlock	OEM Remote monitoring
CHEVROLET																			
Silverado 1500 Premium Package	2007-2013	•	•	•	•	•	•		•	•	•	•	•	•	•	•	•	•	•
Silverado 2500	2007-2014	•	•	•	•	•	•		•	•	•	•	•	•	•	•	•	•	•
Silverado 3500	2007-2014	•	•	•	•	•	•		•	•	•	•	•	•	•	•	•	•	•
Silverado Hybrid	2007-2013	•	•	•	•	•	•		•	•	•	•	•	•	•	•	•	•	•
GMC																			
Sierra 1500	2007-2013	•	•	•	•	•	•		•	•	•	•	•		•	•	•	•	•
Sierra 2500	2007-2014	•	•	•	•	•	•		•	•	•	•	•		•	•	•	•	•
Sierra 3500	2007-2014	•	•	•	•	•	•		•	•	•	•	•		•	•	•	•	•




FIRMWARE VERSION

70.[45]

GM MINIMUM

To add the firmware version and the options, use the **FLASH LINK UPDATER** or **FLASH LINK MOBILE** tool, sold separately.

IF THE VEHICLE IS NOT EQUIPPED WITH FUNCTIONAL HOOD PIN:	A11	OFF	Hood trigger (Output Status).
 <p>Program bypass option:</p>	C1		<p>UNIT OPTION</p> <p>DESCRIPTION</p> <p>OEM Remote status (Lock/Unlock) monitoring</p>

MANDATORY INSTALL

*HOOD PIN



HOOD STATUS: THE HOOD PIN SWITCH MUST BE INSTALLED IF THE VEHICLE CAN BE REMOTE STARTED WITH THE HOOD OPEN, SET FUNCTION A11 TO OFF.

A11

OFF

Notice: the installation of safety elements are mandatory. The hood pin is an essential security element and must be installed.

THIS MODULE MUST BE INSTALLED BY A QUALIFIED TECHNICIAN. A WRONG CONNECTION CAN CAUSE PERMANENT DAMAGE TO THE VEHICLE.

PARTS REQUIRED (NOT INCLUDED)

1x **FLASH LINK UPDATER**,
 1x **FLASH LINK MANAGER**
 SOFTWARE
 1x Microsoft Windows Computer with Internet connection

OR

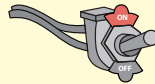
1x **FLASH LINK MOBILE**
 1x **FLASH LINK MOBILE APP**
 Smartphone Android or iOS with Internet connection (provider charges may apply).

MANDATORY | OBLIGATOIRE

HOOD PIN



REMOTE START SAFETY OVERRIDE SWITCH



VALET SWITCH

Part #: RSPB available, Sold separately.

Notice: the installation of safety elements are mandatory. The hood pin and the valet switch are essential security elements and must be installed.

STAND ALONE CONFIGURATION

	Program bypass option	UNIT OPTION	DESCRIPTION
	OEM Remote Stand Alone Remote Starter:	D1.10	By default, LOCK, LOCK, LOCK Par défaut, VERROUILLE,VERROUILLE,VERROUILLE
		D1.1	
	Program bypass option with oem remote:	C1	OEM Remote Monitoring
	Program bypass option with RF KIT antenna:	H1 to H6	Supported RF Kits and select RF Kit

REMOTE STARTER FUNCTIONALITY

All doors must be closed.

3X

Press the OEM remote's Lock button 3x to remote-start (or remote-stop) the vehicle.

The vehicle will START.

REMOTE STARTER DIAGNOSTICS
MODULE RED LED

x2 flash :	Brake ON
x3 flash :	No tach
x4 flash :	Ignition before start
x5 flash :	Hood Open

REMOTE STARTER WARNING CARD



CUT THIS WARNING CARD AND STICK IT ON A VISIBLE PLACE:
 or use the package RSPB, Sold separately.

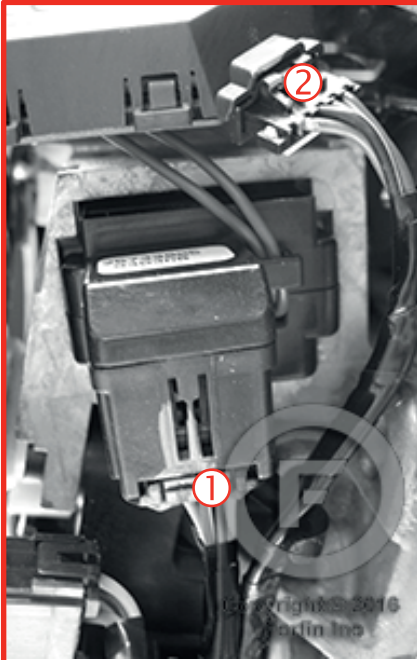
WARNING | ATTENTION

REMOTE STARTER

THE VEHICLE CAN BE STARTED BY EITHER: PRESSING THE LOCK BUTTON ON THE OEM REMOTE 3 TIMES CONSECUTIVELY OR BY A SMARTPHONE. **TURN ON** THE SAFETY SWITCH LOCATED UNDER THE DASHBOARD BEFORE WORKING ON THE VEHICLE.

DESCRIPTION

① ② Ignition Barrel



① Ignition connector*



② Transponder connector



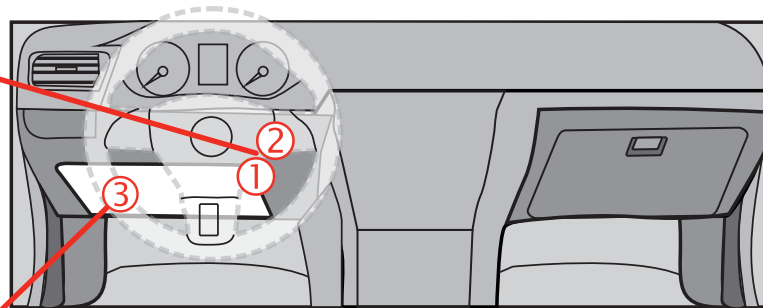
12V BATTERY



ATTENTION THE T-HARNESS CURRENT IS LIMITED AT 2 AMP MAXIMUM.

If the parking lights (+) require more than 2Amp. connect the remote-starter's power directly to the vehicles battery with the appropriate fuse.

Some remote starters can not be powered through Data-Link. In these cases connect the remote starter's fused 12V power wire directly to the T-Harness.



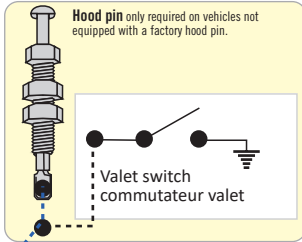
③ BCM Driver's side dash



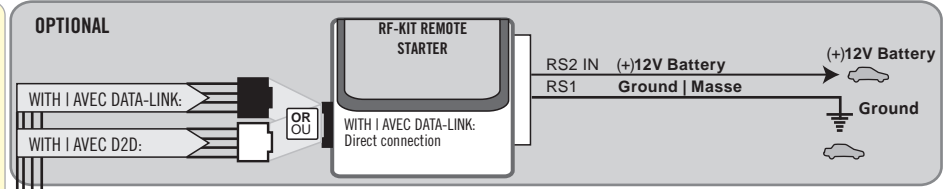
(-)PARKING LIGHTS



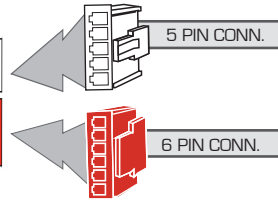
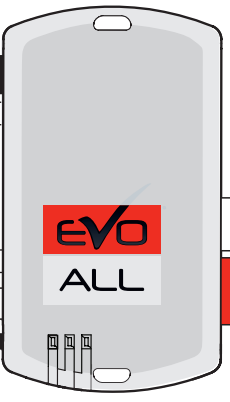
AUTOMATIC TRANSMISSION WIRING CONNECTION



- Start / Stop external control
- (-) Lock/Unlock input external control

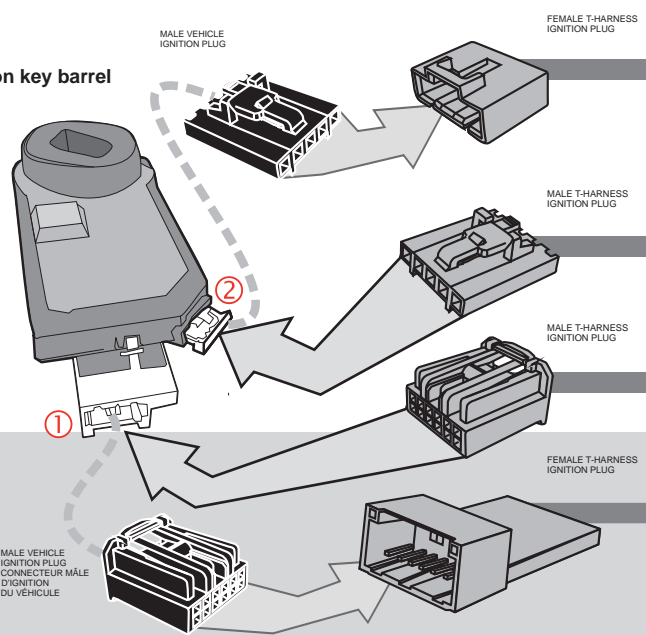


YELLOW	In	A1
(-) Lock	In	A2
(-) Unlock	In	A3
GREEN	Out	A4
WHITE	Out	A5
ORANGE	In	A6
Hood pin	In	A8
Dk. BLUE	In	A9
Red/BLUE	In	A10
Lt. BLUE/BLACK	In	A11
BLACK	Out	A12
PINK	Out	A13
Start/Stop external	In	A13
(-) Parking Lights	Out	A14
(-) Trunk Output	Out	A15
PINK/BLACK	Out	A15
PURPLE/YELLOW	Out	A16
GREEN/WHITE	Out	A17
GREEN/RED	Out	A18
WHITE/BLACK	Out	A19
Lt. BLUE	Out	A20

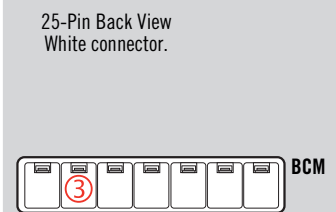
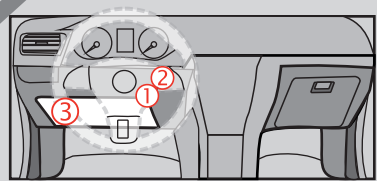
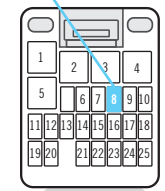


T-HARNESS - HARNAIS EN T

Ignition key barrel

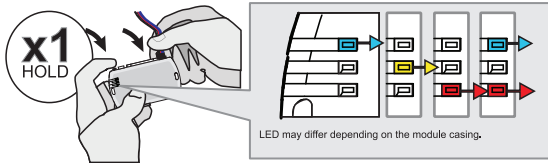


A14
(-) PARKING LIGHTS
Lt. Blue



KEY BYPASS PROGRAMMING PROCEDURE 1/2 |

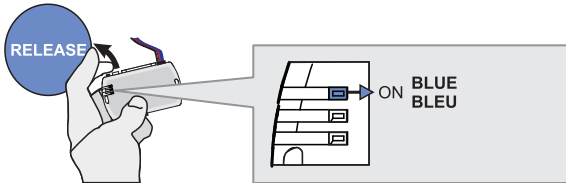
1



Press and hold the programming button:
Connect the 4-PIN Data-link harness (Black connector).

↳ The Blue, Red, Yellow and Blue & Red LEDs will alternatively illuminate.

2

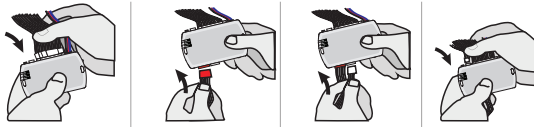


Release the programming button when the LED is BLUE.

Relâchez le bouton de programmation quand la DEL est BLEU.

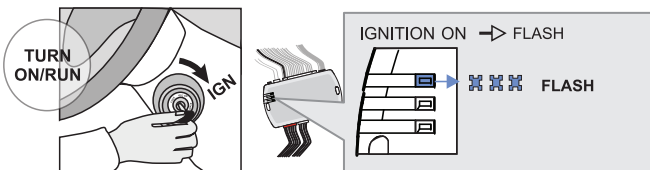
If the LED is not solid BLUE disconnect the 4-Pin connector (Data-Link) and go back to step 1.

3



Insert the required remaining connectors.

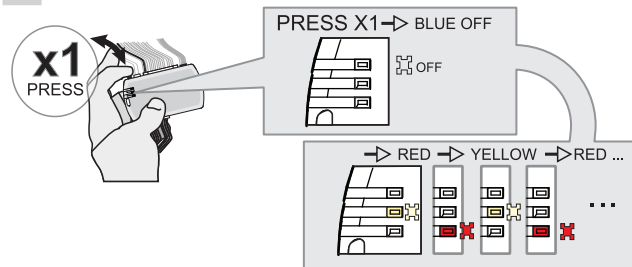
4



Turn the key to the Ignition ON/RUN position.

↳ The Blue LED will flash rapidly.

5

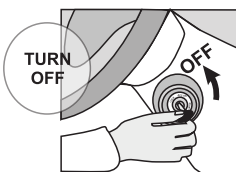


Press and release the programming button once (1x).

↳ The Blue LED will turn OFF.

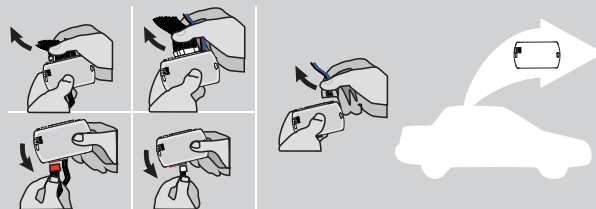
↳ The YELLOW and RED LEDs will alternate..

6



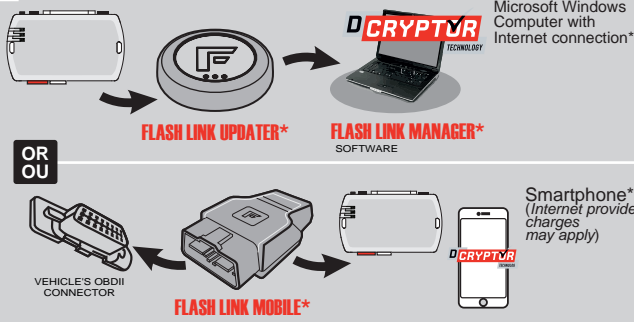
Turn the key to the OFF position.

7



Disconnect all the connectors and after the Data-Link (4-pins) connector.

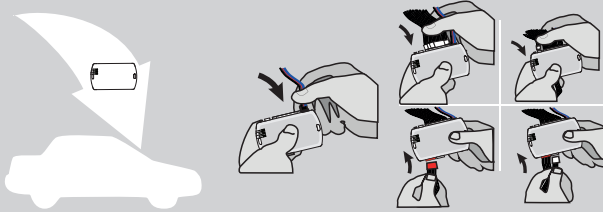
8



Use the tool:
FLASH LINK UPDATER or
FLASH LINK MOBILE
to visit the DCryptor menu.

*Parts required (not included)

9



AFTER DCRYPTOR PROGRAMMING COMPLETED
Go back to the vehicle and **reconnect** the 4-Pin (Data-Link) connector and after, all the remaining connector.



The module is now programmed.



REMOTE STARTER / ALARM VERIFICATION PROCEDURE

Test the remote starter. Remote start the vehicle.