



**INSTALL INSTRUCTIONS FOR:
SYSTEM #817845
2017-2018 DODGE CHARGER
R/T & DAYTONA
FITS: 5.7L ENGINE WITH
FACTORY BUMPER CUT-OUTS**

REVIEW FLOWMASTER SYSTEM:

1. Please take a moment to read and understand these instructions before installing your Flowmaster performance system. Use the parts drawing and list to verify exhaust system contents.

NOTE: Some steps in the following instructions may contain two images. The first identifies location of action performed, the second identifies the action performed.

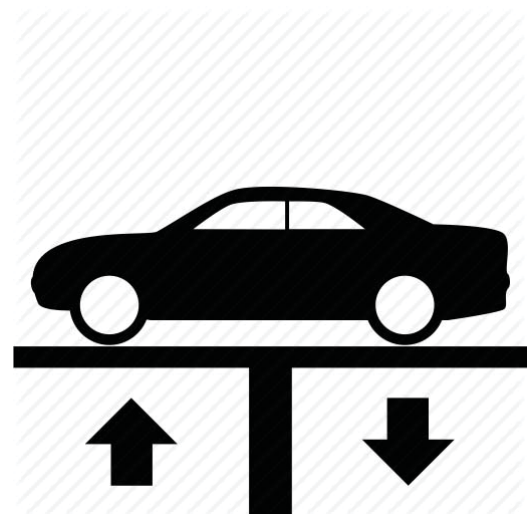
PART NO.	DESCRIPTION	QTY.
26724S	Scavenger Pipe	1
26631S	Right Tailpipe	1
26633S	Left Tailpipe	1
15430-253	Mufflers	2
PK868	Hardware Pack	1
MC250BS	2-1/2" Clamps	2
MC300BS	3" Clamps	4
HW502	7/16" Hanger Keepers	2
HW512	Standoff	6
HW243	1/4" Screw	6
HW240	3/4" Screw	6
HW315	Flat Washer	6

REMOVE STOCK EXHAUST SYSTEM:

WARNING:

Avoid serious burns! Allow the exhaust system to cool completely before removing the factory exhaust system.

2. Raise the vehicle up on a hoist or rack to working height. If you don't have access to a hoist or rack, raise the vehicle and support securely with jack stands. Use penetrating lubricant as necessary to ease disassembly.

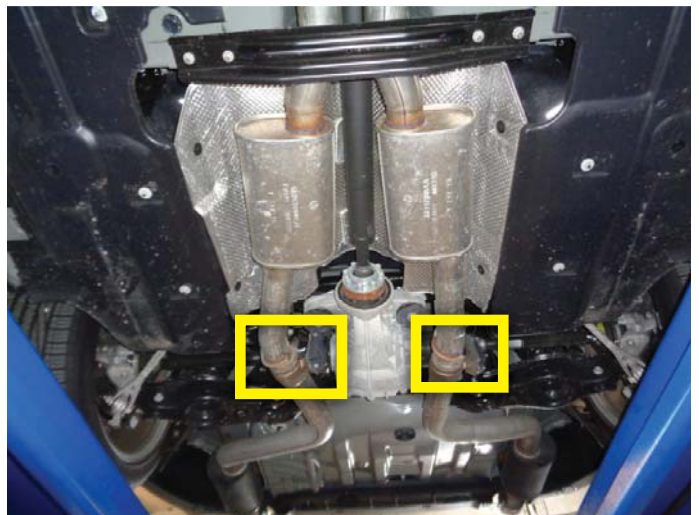


NOTE: Use stands when necessary to support parts as you complete all following instructions.

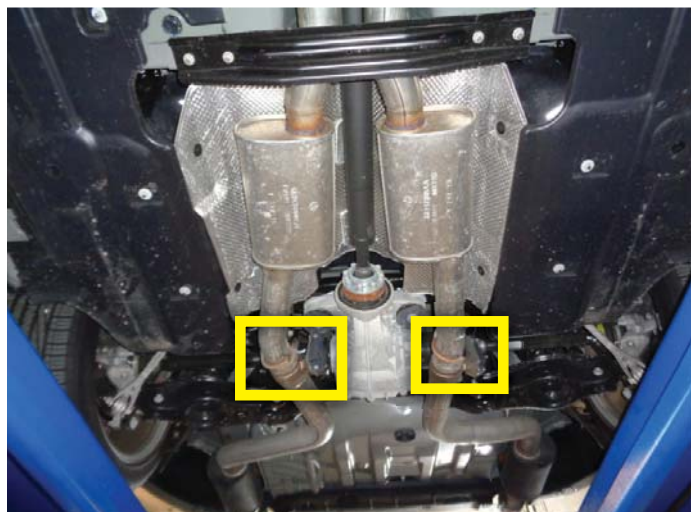
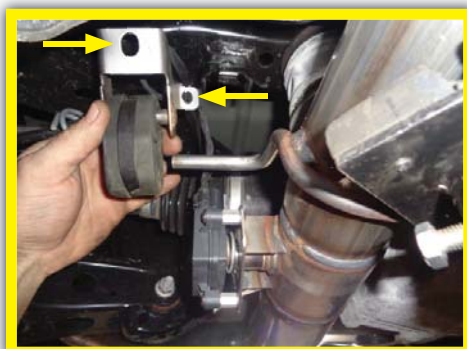
3. Remove bolt and mount supporting driver side tailpipe. Retain bolt and mount for re-use. Repeat step for passenger side tailpipe.



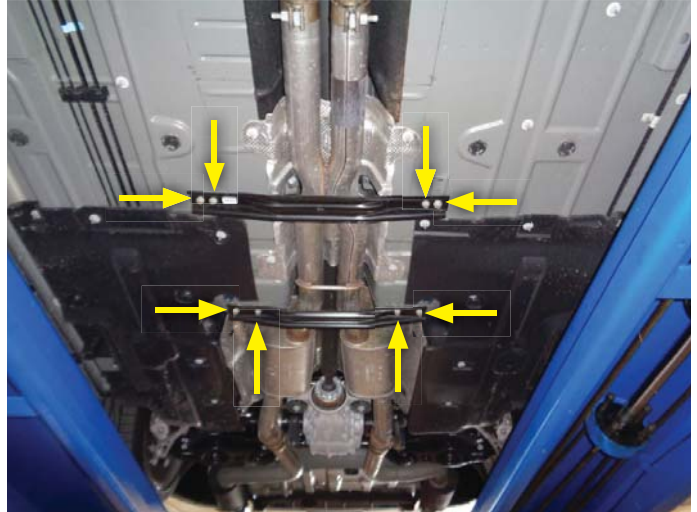
4. Unplug wire from driver side exhaust valve actuator. Repeat step for passenger side exhaust valve actuator.



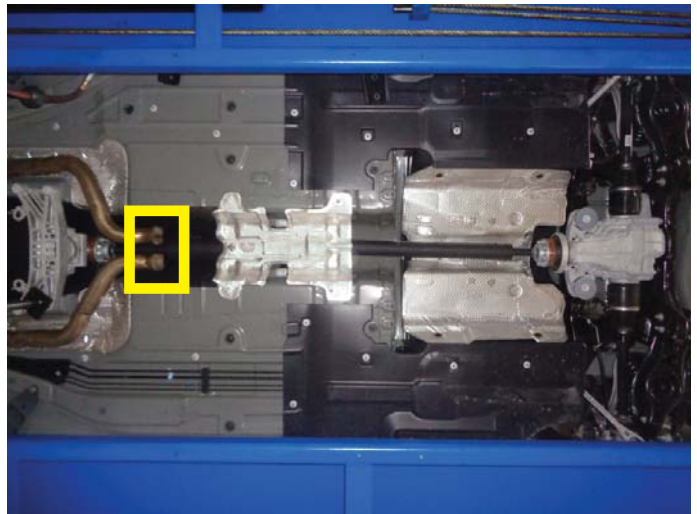
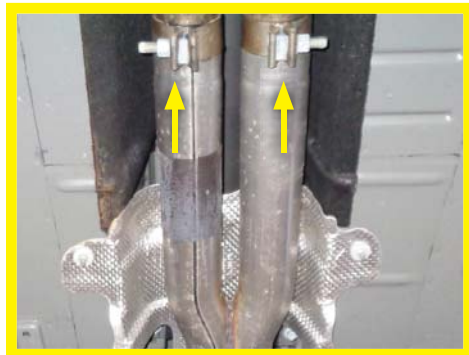
5. Unclip grounding strap and slide wire hanger out of rubber isolator on driver side tailpipe. Next, unbolt mount, flip it around and reinstall. Repeat step for passenger side tailpipe.



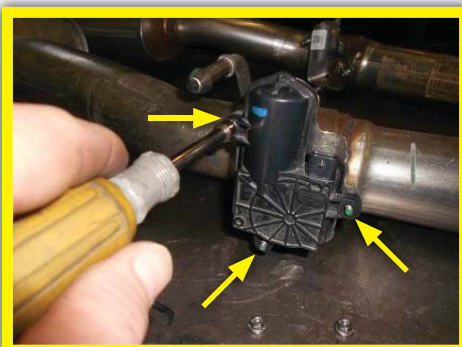
6. Remove nuts (x8) to uninstall braces supporting rear pipes. Retain nuts and braces for re-use.



7. Loosen clamps (x2) connecting factory exhaust system to front pipes. Carefully slide system off of front pipes to remove completely from vehicle.



8. Remove nuts (x3) then detach actuator and spring from mount on driver side tailpipe. Retain actuator and spring for re-use. Repeat step for passenger side tailpipe.

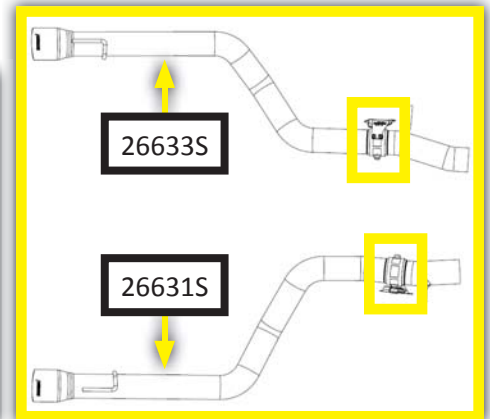
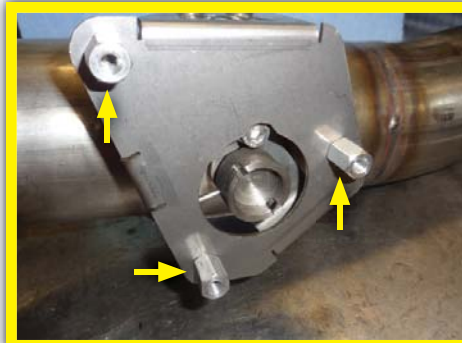
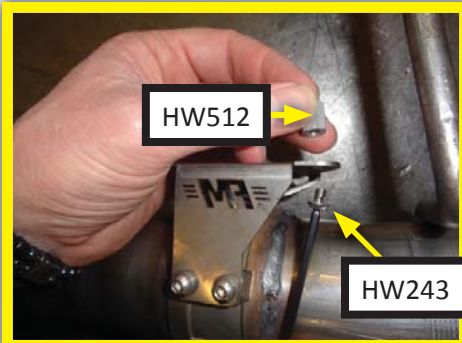


INSTALL FLOWMASTER EXHAUST SYSTEM

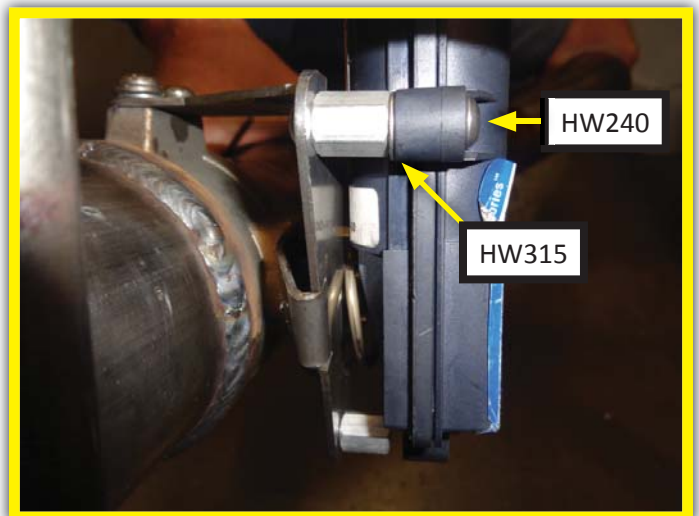
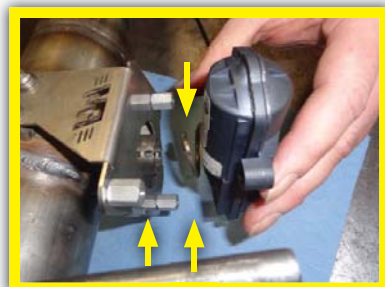
- Remove nuts from stock and Flowmaster clamps, apply anti-seize compound to bolts and re-install nuts.



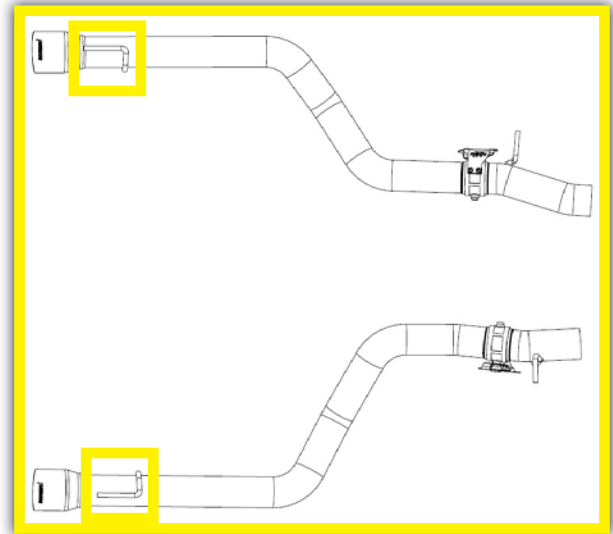
- Install (hand-tight) **1/4" screws (HW243)** (x3) through valve bracket and **standoffs (HW512)** (x3) on **right tailpipe (26631S)**. Repeat step for **left tailpipe (26633S)**.



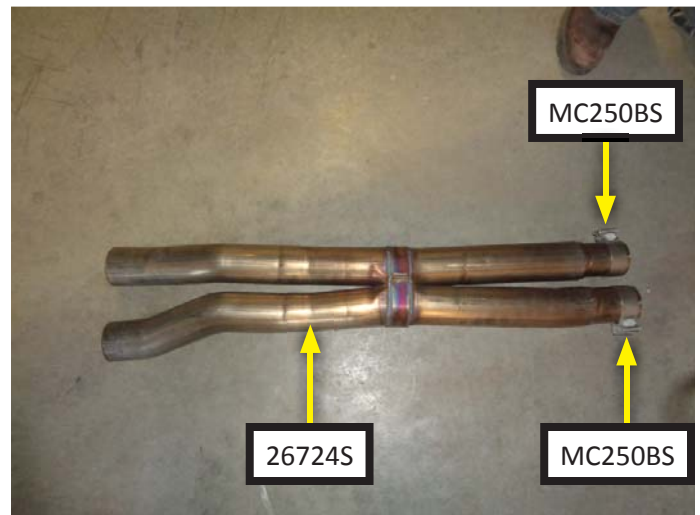
- Place driver side actuator onto left tailpipe valve bracket. Place **flat washers (HW315)** (x3) between actuator and standoff then loosely fasten **3/4" screws (HW240)** (x3). Once actuator is located, finish tightening all screws. Repeat step for right tailpipe. (removed step 8)



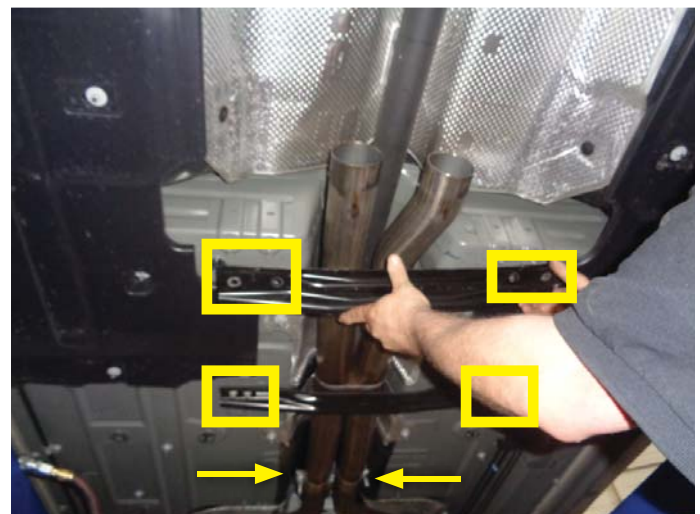
12. Place factory mount from driver side tailpipe onto left tailpipe. Repeat step for right tailpipe. (removed step 1)



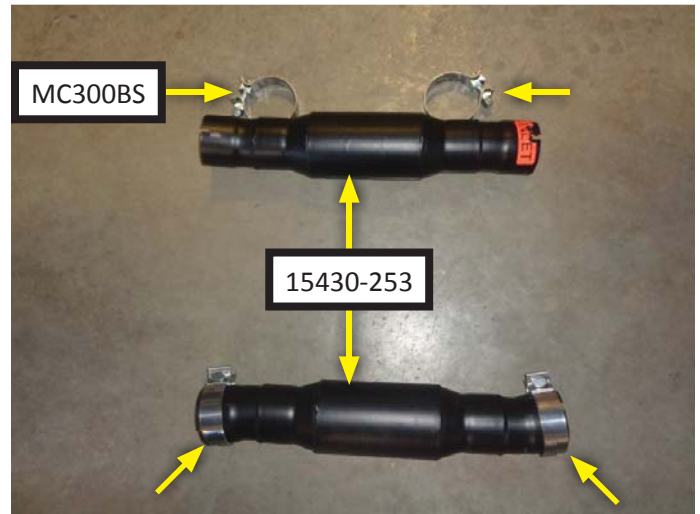
13. Place 2-1/2" clamps (MC250BS) (x2) onto scavenger pipe (26724S).



14. Slide scavenger pipe into front pipes then tighten both clamps just enough to allow for adjustment. Tighten nuts (x8) to install braces which support scavenger pipes. (removed step 6)



15. Install clamps (MC300BS) (x4) onto both mufflers (15430-253).

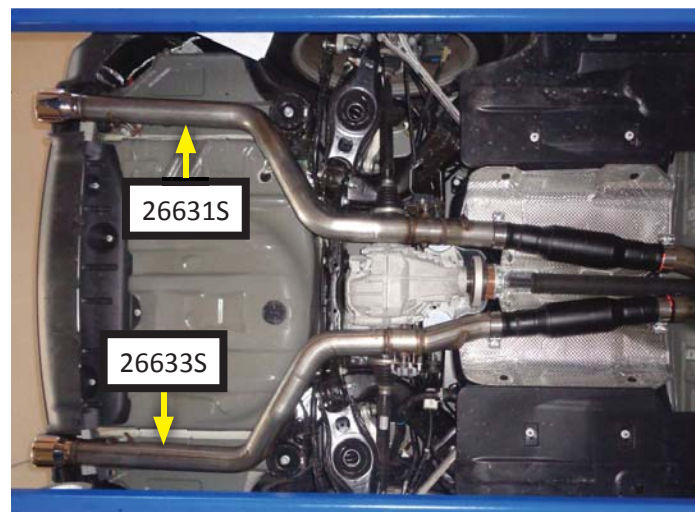
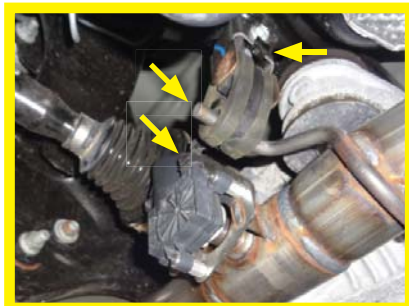


NOTE: Mufflers must be installed flat.

16. Install mufflers (x2) into scavenger pipe outlet. Tighten clamps just enough to allow for adjustment.



17. Place left tailpipe into muffler while seating wire hanger in rubber isolator. Plug wire into exhaust valve actuator and clip in grounding wire. Repeat step for right tailpipe.



18. Fasten factory bolt and mount into position to secure left tailpipe. Repeat step for right tailpipe



19. Adjust exhaust system components to provide a satisfactory fit. Maintain a minimum of 1/2" clearance around each component while keeping suspension, travel and vibration in mind. Once adjustments are made, securely tighten all clamps.
20. Install **hanger keepers (HW502)** (x2) onto the end of each hanger to prevent components from slipping out of their rubber mounts.
21. We recommend welding all slip-fit connections for a more secure installation. You may also apply high temperature paint over welded areas to prevent rust and premature corrosion.

Congratulations, the installation of your FLOWMASTER performance exhaust system is now complete!



NOTE: Flowmaster maintains a highly trained technical service department to answer your technical questions, provide additional product information and offer various recommendations.





OUTLAW

S E R I E S
409S® Stainless Steel

Installation diagram for:
SYSTEM # 817845
2017 - 2018 DODGE CHARGER
R/T & DAYTONA

FITS: 5.7L ENGINE WITH FACTORY
BUMPER CUT-OUTS

