



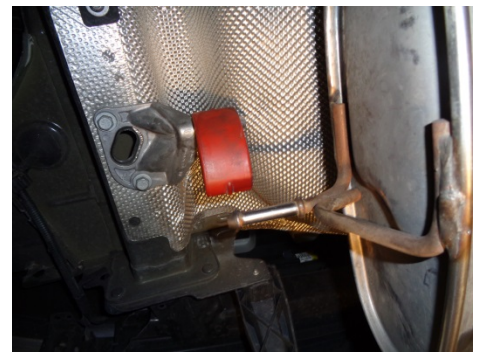
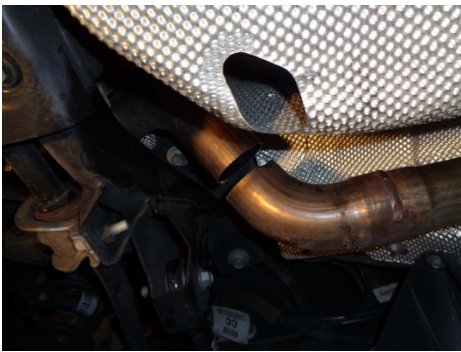
Installation Instructions for:  
**SYSTEM #817795**  
2013-2017 FORD FOCUS ST  
2.0L TURBOCHARGED ENGINE

**OUTLAW**  
S E R I E S

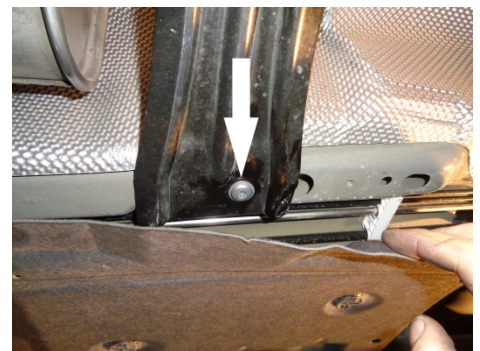
**4095<sup>®</sup> Stainless Steel**

01/08/18

1) Raise the vehicle up on a hoist or rack to working height. Spray a penetrating lubricant onto the two front flange bolts as well as the rubber hanger mounts that support the system. This will greatly ease removal of the factory system.



2) To remove the factory exhaust system you will have to cut the system in half. Cutting just before the pipe goes over the rear axle system will allow both halves of the system to be removed easily. After cutting, support the rear muffler with a stand and unbolt the left hanger from the frame. Remove the right hanger on this section from the rubber mount on the vehicle. You can now lower this section from the vehicle.



3) In front of the large center muffler, remove the two nuts at the flanged connection just behind the flex joint. Then remove the two bolts from the steel body brace behind the large muffler. Once unbolted, remove the hanger on this section from the rubber mount on the vehicle and lower from the vehicle and set aside. Save the gasket from between the two flanges for use with the Flowmaster system.



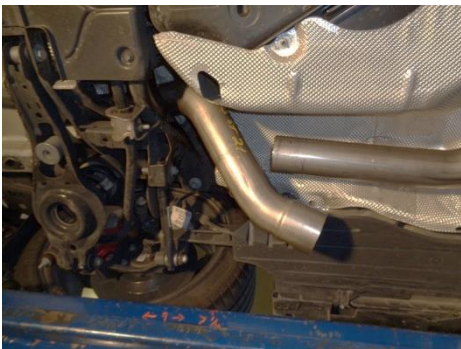
4) Using the 3/8" bolts, nuts and washers provided, bolt adapter assembly **873TBS** to the back of the flex pipe flange. Be sure to re-install the gasket. Tighten securely.



5) Place a supplied clamp onto the inlet of muffler **#15191S**, slide the muffler onto 873TBS completely and support the muffler with a stand, tighten the clamp enough to hold but still allow for adjustment.



6) Place a supplied clamp onto the outlet of muffler **#15191S**, slide intermediate pipe **#26684** into the back of the muffler and connect the hanger on the pipe to the rubber mount on the vehicle. Support the pipe with a stand and tighten the clamp enough to hold, but still allow for adjustment. Then reinstall the steel body brace removed in step 3 above and tighten securely.



7) Place a supplied clamp onto the back of the intermediate pipe. Then place over-axle pipe **#26685S** into position from the front of the rear axle, and slip it onto the back of the intermediate pipe. Tighten the clamp enough to hold, but still allow for adjustment





8) Place the left hanger from the factory muffler assembly onto the left hanger rod of exit pipe assembly **#26686S**.



9) Place a supplied clamp onto the front of the exit pipe assembly. Slide the exit pipe assembly over the back of the over-axle pipe and connect the right hanger on the assembly to the rubber mount on the vehicle. Using the factory bolts, reinstall the left hanger back onto the frame of the vehicle. Tighten the clamp enough to hold, but still allow for adjustment.



10) Adjust the position of all pipes and muffler to provide a satisfactory fit. This is a tight fitting system, so take your time and be patient, tightening and adjusting a little bit at a time. Be sure to maintain an adequate clearance around all parts of the system to avoid rattles or damage to heat sensitive components. Once you're happy with the fit, tighten all connections down securely. For a cleaner appearance and more secure installation, we highly recommend welding all slip-fit connections.

PACKING LIST		
Qty.	Description	Part #
1	Adapter Assembly	837TBS
1	Muffler	15191S
1	Intermediate Pipe	26684S
1	Over-Axle Pipe	26685S
1	Exit Pipe Assembly	26686S
1	<b>PARTS KIT (includes the following)</b>	<b>PK922</b>
4	• 3" Band Clamp	MC300BS
3	• 7/16" Hanger Keeper	HW502
2	• 3/8" x 1 1/2" Bolt	HW210
2	• 3/8" Nut	HW103
2	• 3/8" Flat Washer	HW303
2	• 3/8" Lock Washer	HW309

