



**AMERICAN
THUNDER**

409S, Stainless Steel

Installation Instructions for:
SYSTEM #817741
2015 DODGE CHARGER SE/SXT
2015 CHRYSLER 300
3.6L V6 ENGINE

Removal:

1) Raise vehicle and support securely with stands. To ease the removal of the stock system, spray a penetrating lubricant onto the rubber isolators that support the system as well as the nuts at the two clamp connections behind the catalytic converters.



2) Using a 13mm socket, unbolt the two body braces in the center of the vehicle. The braces will be re-installed after completing step 2 of the installation instructions below.



3) Support the rear of the system with a stand. Then starting at the rear of the vehicle, remove the hangers on the system from the rubber mounts on the vehicle, also un-clip the ground strap from the middle hanger on the right tailpipe. Then using a 15mm socket, loosen the clamps at the slip fit connections behind the catalytic converters and with the help of an assistant, lower the stand and slide the system back off of the head pipes. Carefully lower from the vehicle.

Installation:

1) Before installing anything, prep the clamps supplied in the hardware kit by removing the nuts, and applying a thick lubricant such as white grease or anti-seize to the threads.



2) Begin by placing a supplied 2 ¼" clamp onto each of the slip fits on Scavenger pipe **#86331S**. Place the Scavenger pipe onto the back of the stock head pipes (make sure the Flowmaster embossing is facing the ground). Level and center the assembly in the drive line tunnel and support with a stand. Tighten the two clamps enough to hold, but still allow for adjustment. Reinstall the two body braces onto the vehicle and tighten securely.

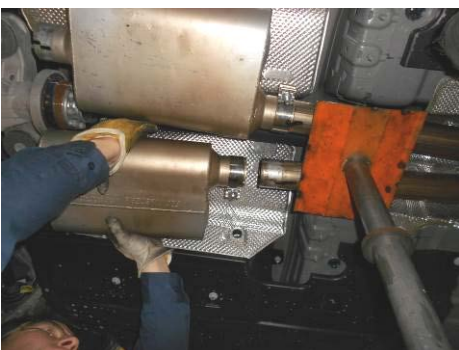
Note: If installing the system on a Chrysler 300, steps 3 and 4 are not required, please skip to Step 5.



3) To install the new Flowmaster system you will need to remove the factory hanger located on the cross member just behind the rear differential. After unbolting the hanger, remove the rubber isolator from the hanger mount, the rubber isolator and the bolt/washer securing the hanger will be re-used with the Flowmaster system.



4) Locate the new front hanger for the left side tailpipe, **#491HA**, in the parts kit along with the bolt/washer removed in the step above. This hanger will be bolted to the front of the mount located beside the rear differential on the drivers' side of the vehicle. Place **491HA** onto the front of the mount with the hanger rod pointing to the left as shown. Use the factory bolt to secure the hanger to the mount on the vehicle. The hanger will sit down into the J-hook on the mount. Tighten securely. Place the factory rubber mount onto the end of the hanger.



5) Place a supplied 2 ½" clamp onto the inlet of each **#842546-Z** muffler. Then fully slide the mufflers onto the back of the Scavenger pipe assembly and support with stands. Level the mufflers and tighten the clamps enough to hold, but still allow for adjustment.



6) Place a supplied 2 1/2" clamp onto the outlet of the left muffler, then place the left tailpipe **#15184S** into position and starting from the rear, connect the hangers on the tailpipe to the rubber mounts on the vehicle. Slide the tailpipe into the muffler outlet. Adjust the tailpipe so that all hangers are level and tighten the clamp enough to hold, but still allow for adjustment. The tip at the back of the tailpipe should be centered in the exhaust bezel in the bumper of the vehicle. Repeat this step for right tailpipe **#15185S**. Replace the ground strap to the middle hanger of the right tailpipe.

7) Adjust the position of all the pipes and mufflers to provide a satisfactory fit. A **minimum of 1/2" clearance** around all parts of the system must be maintained while keeping suspension travel and vibration in mind. After adjustments have been made, you may now securely tighten all clamps.

8) After the system is secure, slide the 7/16" hanger keepers onto the end of the 491HA hanger mount as well as all three of the wire hangers on each tailpipe assembly. These will prevent the hangers from slipping out of the rubber mounts. **491HA not used on Chrysler 300.**

9) For a more secure installation, we recommend welding all slip-fit connections.

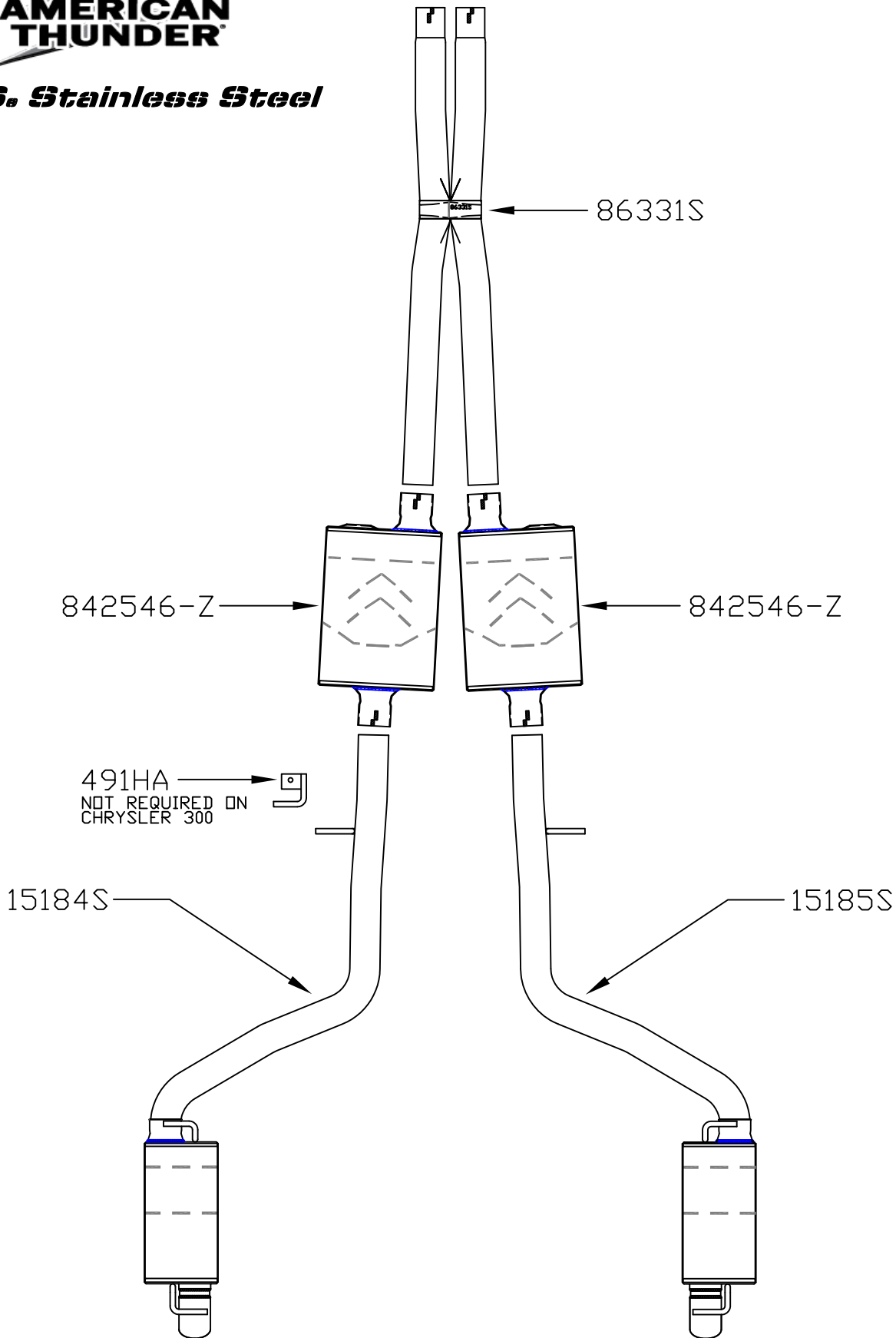
PACKING LIST

<u>Qty</u>	<u>Description</u>	<u>Part#</u>
2	Mufflers	842546-Z
1	Scavenger Assembly	86331S
1	Left Tailpipe Assembly	15184S
1	Right Tailpipe Assembly	15185S
1	Parts Kit	PK803
1	Left Tailpipe Hanger	491HA
2	2-1/4" Band Clamp	MC225BS
4	2-1/2" Band Clamp	MC250BS
7	7/16" Hanger Keepers	HW502



Installation diagram for:
SYSTEM #817741
2015 DODGE CHARGER SE/SXT
2015 CHRYSLER 300
3.6L V6 ENGINE

AMERICAN THUNDER
409S. Stainless Steel



Feel the difference with Flowmaster.

Find out more about performance exhaust systems we have.