



**AMERICAN  
THUNDER**

**4099<sub>s</sub> Stainless Steel**

Installation Instructions for:  
**SYSTEM #817699**  
**2014-2017 RAM 2500 SERIES TRUCK**  
5.7L HEMI • CREW CAB MODELS ONLY  
DOES NOT FIT WITH FACTORY AIR-BAGS



1) Raise the vehicle up on a hoist or rack to working height. If you do not have access to a hoist or rack, raise the vehicle and support securely with jack stands.



2) To make the removal of the stock system easier, using a hacksaw or sawsall, cut the stock tailpipe off where it exits the muffler. Remove the hanger at the rear of the tailpipe from the rubber mount on the vehicle and set the tailpipe aside. This step is not mandatory, but makes removal easier. There are retainer clips on the ends of each of the hangers that will need to be removed with pliers to allow disassembly.



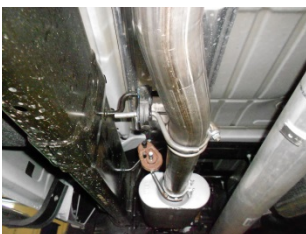
3) Support the muffler with a stand and remove the two hangers at the rear of the muffler along with the hangers in front of the muffler from the rubber mounts on the vehicle. Then, remove the clamp on the slip connection just behind the catalytic converter. **After removing the clamp, this connection will have to be either sliced or heated in order to separate the connection.** Remove the muffler and set aside.



4) Trim inlet pipe **#26428S** according to the following measurements before placing onto the stock front pipe just behind the catalytic converter. Be sure to line up the notch in the pipe with the tab on the front pipe. Place the provided 3" clamp onto this connection and tighten enough to hold.

**2014 Crew Cab, 6'-4" bed models: Trim 18.50"**

**2014 Crew Cab, 8' bed models: No Trim**

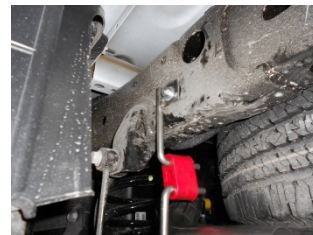
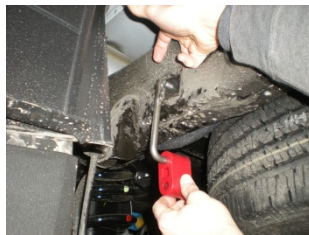


5) Slide clamp hanger **#459HA** over the back of inlet pipe **#26428S** and connect to the rubber mount on the frame located midway between the converter and the muffler.

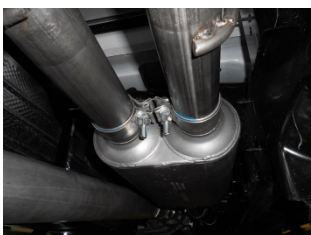


6) Install clamp hanger **#476HA** provided in the parts kit onto the rear of the inlet pipe and leave loose. Connect the inlet of the muffler to the back of the inlet pipe and support the muffler with a stand. Slide the **476HA** clamp assembly over the muffler inlet and connect the hanger to the rubber mount on the vehicle as shown, tighten the clamp enough to hold but still allow for adjustment.

7) At the rear of the frame on the drivers side of the vehicle there is a rectangular hole in the outside of the frame. Using this hole, connect frame hanger **#474HA** to the outside of the frame using the **#475HA** as a backing plate on the inside of the frame, secure with the nut and washers provided. Make sure the hanger is straight up and down, and then tighten securely. Place rubber hanger **#HA168** onto the bottom of frame hanger **#474HA**.



8) Install a provided 2½" clamp onto the right muffler outlet. Place the right side tailpipe **#86195S** into position over the axle and slip into the right side muffler outlet, while at the same time, connecting the hangers at the front and rear of the pipe to the rubber mounts on the vehicle. Tighten the clamp enough to hold, but still allow for adjustment.



9) Install a provided 2½" clamp onto the left muffler outlet. Place the front section of the left side tailpipe **#86194S** into the left side muffler outlet and connect the hanger on the pipe to the rubber mount on the vehicle. Tighten the clamp enough to hold, but still allow for adjustment. Place a second 2½" onto the back of this pipe in preparation for the next step.



10) Connect the rear section of the left side tailpipe **#86196S** onto the back of the front section by sliding the two sections together at the slip-fit connection over the rear axle. Place the hanger at the rear of the tailpipe into the rubber mount installed in Step 7 above. Tighten the clamp enough to hold, but still allow for adjustment.



11) Slide either the side exit pipe **#86197S** or the rear exit pipe **#86206S** onto the ends of both over-axle pipes. Place a 2 1/2" clamp onto these slip-fit connections. Tighten enough to hold, but still allow for adjustment. Place the two stainless tips **#ST461** onto the exit pipes and tighten the clamps enough to hold, but still allow for adjustment. Rotate the exit pipe and tip to the desired distance from the fender or bumper and so angle cut on tips are in the desired location.

Adjust the position of all pipes and muffler to provide a satisfactory fit. A minimum 3/4" clearance around all parts of the system must be maintained; while also keeping suspension travel and vibration in mind.

Tighten all clamped connections down securely. Slide the 7/16" hanger keepers onto the end of the hangers at the rear of the vehicle on the driver's side to prevent the hangers from slipping out of the rubber mounts. Use the included zip-tie to tie the rear axle breather tube up and away from the left tailpipe to prevent damage.

For a more secure installation, we recommend welding all slip-fit connections.

### PACKING LIST

<u>Qty</u>	<u>Description</u>	<u>Part#</u>
1	Inlet Pipe	26428S
1	Muffler	8530572-Z
1	Right Tailpipe	86195S
1	Left Tailpipe, Front Section	86194S
1	Left Tailpipe, Rear Section	86196S
2	Side Exit Pipe (R/L)	86197S
2	Rear Exit Pipes (R/L)	86206S
2	Stainless Tip	ST461
1	Parts kit	PK766
1	Frame Hanger	474HA
1	Back up plate w/bolt	475HA
1	Muffler Inlet Hanger	476HA
1	Inlet Pipe Hanger	459HA
5	2 1/2" clamp	MC250BS
1	3" clamp	MC300BS
1	Rubber hanger	HA168
1	3/8" Nut	HW103
1	3/8" lock washer	HW309
1	3/8" Flat Washer	HW303
2	7/16" Hanger Keepers	HW502
1	8½" Nylon Zip Tie	HW504



**409S Stainless Steel**

**Installation diagram for:  
SYSTEM #817699**

**2014-2017 RAM 2500 SERIES TRUCK  
5.7L HEMI • CREW CAB MODELS ONLY  
DOES NOT FIT WITH FACTORY AIR-BAGS**

