



**OUTLAW**  
S E R I E S

**409S Stainless Steel**

Installation Instructions for:

**SYSTEM #817688**

**2009-2013 GM SILVERADO / SIERRA 1500 - (NON HD)**

FITS: 5.3L ENGINES ONLY

CREW CAB-5.5' BED & EXTENDED CAB-6.5' BED ONLY

### Removal:

1) Raise the vehicle up on a hoist or rack to working height. If you do not have access to a hoist or rack raise the vehicle and support securely with jack stands.



2) Support the muffler with a stand. Using a hacksaw or sawsall, cut the stock tailpipe off just behind the muffler. Separate the wire hangers on the tailpipe from the rubber mounts on the vehicle and remove the tailpipe from the vehicle. This step is not mandatory but makes removal easier.



3) Using a 15mm wrench, loosen the bolt on the clamped ball connection behind the catalytic converter. Separate the wire hangers from the rubber mounts on the vehicle and lower the inlet pipe and muffler from the vehicle. A lubricant will make removal much easier. You will need to remove the ball clamp from the stock system; it will be reused with the Flowmaster system.

### Installation:



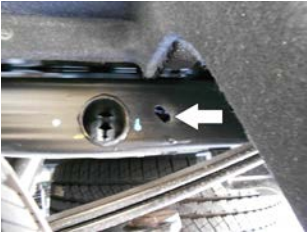
1) Place inlet pipe assembly **#26453S** into position onto the ball connection behind the catalytic converter. Reinstall the clamp onto the ball connection and tighten enough to hold, but still allow for a small amount of adjustment. Rotate the pipe so that the rear of the pipe is positioned up toward the floor of the truck. Support the rear of the pipe with a stand.



2) On Crew Cab - 5.5" bed model trucks, slide hanger assembly **#481HA** over the back of the inlet pipe and connect to the rubber mount on the vehicle. On Extended Cab - 6.5" models do the same with hanger **#480HA**. Tighten the ring clamp enough to hold, but still allow for adjustment.



3) Place a supplied 3" clamp over the inlet of the muffler, then slide the inlet of muffler onto the back of the inlet pipe. Use a stand to support the muffler. Tighten the clamp just enough to hold in position.



4) Slide rubber hanger **#HA168** onto the end of **226HA**, then using the supplied bolts, washers, nuts and backing plate **#HA226**, mount the assembly to the frame on the left side of the vehicle using the angled oblong hole on the frame rail. *Note: the backing plate #HA226 goes on the inside of the frame between the washers & nut to cover the oblong hole so that the frame hanger won't bend into the oblong holes.*



5) Place two of the supplied 3" clamps over the right and left outlets of the muffler. Place right tailpipe **#26431S** into position over the rear axle, and slide into the right muffler outlet. Connect the two hangers on the pipe to the rubber mounts on the vehicle. Pipe should be approximately 3/4" away from the shock when adjusted.



6) Place left front tailpipe section **#26430S** into position over the rear axle and slide into the left muffler outlet. Place a supplied 3" clamp onto the back of the pipe. Place left rear tailpipe section **#26432S** onto the front section, and connect the hanger welded to the rear of the pipe into the rubber hanger installed in step 3 above. Pipe should be centered between the shock and the spare tire when adjusted. Tighten the clamps just enough to hold in position.



7) Slide the side exit pipes **#26433S** or the rear exit pipes **#26454S** onto the ends of both over axle pipes and place a supplied 2-1/2" clamp onto these slip-fit connections. Tighten just enough to hold in position. Place the two stainless tips **#ST462B** onto the exit pipes and tighten them enough to hold position. Rotate the exit pipes and tips to the desired distance from the body or bumper, so that the angle cut on the tips are in the desired location.

8) Adjust the position of all pipes and muffler to provide a satisfactory fit. A minimum 3/4" clearance around all parts of the system must be maintained; while also keeping suspension travel and vibration in mind.

9) Tighten all clamped connections down securely. Place the supplied 1/2" hanger keepers onto the end of the inlet pipe and tailpipe hangers. Slide the 7/16" hanger keeper onto the left rear frame hanger up to the rubber mounts, to firmly hold the system in place.

10) To prevent the rear axle breather tube from contacting the left side tailpipe, and possibly being damaged, use the enclosed zip tie to fasten the breather tube to the brake line bracket located on the rear end. Be sure to allow hose enough slack for the suspension to fully compress and extend.

11) For a more secure installation, we highly recommend welding all slip-fit connections.

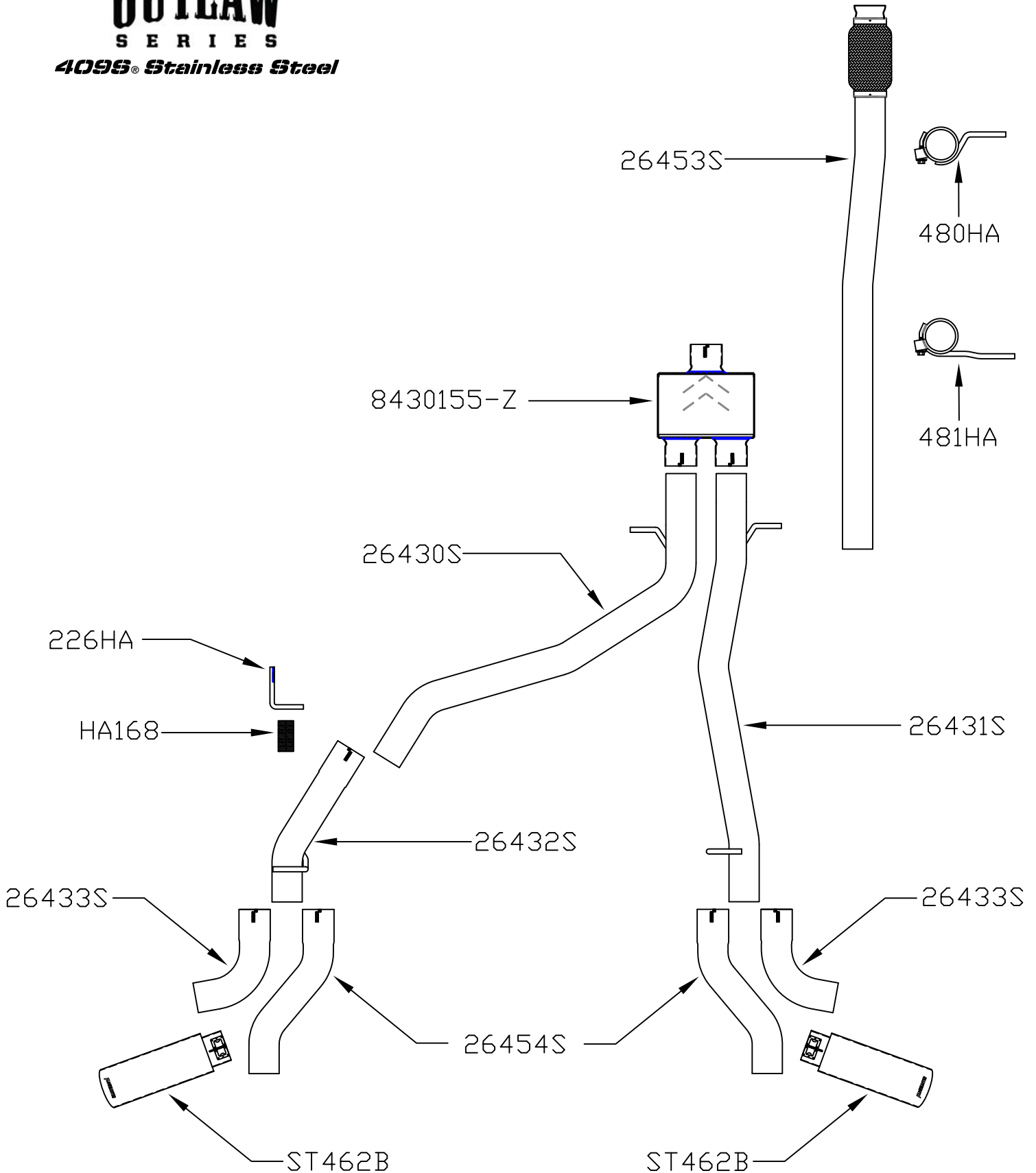
### PACKING LIST

<u>Qty</u>	<u>Description</u>	<u>Part #</u>
1	Inlet Pipe	26453S
1	Muffler	8430155-Z
1	Tailpipe, Right	26431S
1	Tailpipe, Left Front	26430S
1	Tailpipe, Left Rear	26432S
2	Side Exit pipe R/L	26433S
2	Rear Exit Pipe R/L	26454S
2	Black Stainless Tip	ST462B
1	Parts Kit	PK774
1	Front Clamp Hanger	480HA
1	Front Clamp Hanger	481HA
1	Frame Hanger, Left	226HA
1	Backing Plate	HA226
1	Rubber Hanger	HA168
6	3" Clamp	MC300BS
1	3/8" X 1" Bolt	HW208
1	3/8" Nut	HW103
1	3/8" Flat Washer	HW303
1	3/8" Lock Washer	HW309
1	7/16" Hanger Keeper	HW502
5	1/2" Hanger Keeper	HW503
1	15" Zip Tie	HW505



**OUTLAW**  
S E R I E S  
409S® Stainless Steel

Installation diagram for:  
**SYSTEM #817688**  
2009-2013 GM SILVERADO / SIERRA 1500  
5.3L ENGINES ONLY  
CREW CAB-5.5' BED & EXTENDED-CAB 6.5' BED ONLY



Feel the difference with Flowmaster.

Find out more about performance exhaust systems we have.