



Installation Instructions  
**717973**  
2006-08 DODGE RAM 1500  
5.7L ENGINE

**OVERVIEW:**

1. Take a moment to read and understand these instructions before installing your Flowmaster performance system.

**NOTE:** Please inventory all parts now before continuing and if necessary, report any missing items to our tech line. This will avoid potentially stranding your vehicle until any missing replacement parts arrive.

| ITM # | PART #    | DESCRIPTION                | QTY. |
|-------|-----------|----------------------------|------|
| 1     | 70006-591 | Muffler Assembly           | 1    |
| N/A   | PK1079    | Hardware Package includes: | 1    |
| 2     | 390HA     | Clamp Hanger               | 1    |

**REMOVE STOCK EXHAUST SYSTEM:**

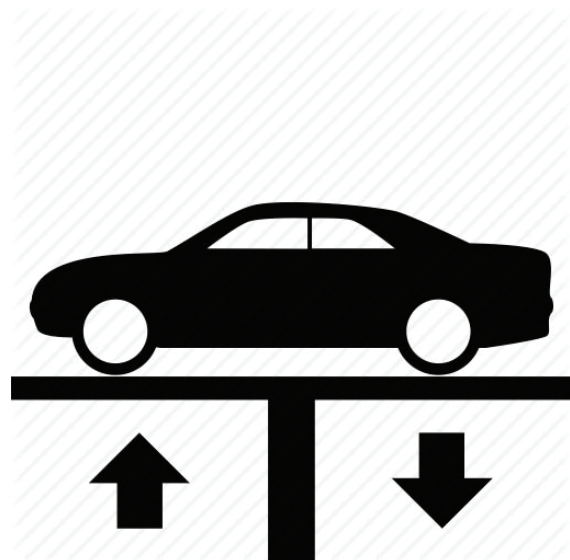
2. Raise vehicle up on a hoist or rack to working height. If you don't have access to a hoist or rack, support vehicle with jack stands.

**WARNING:**

Avoid serious burns! Allow your vehicle time to cool completely before touching any factory engine components.

**To ease preparation and installation of your new kit:**

- Apply penetrating lubricant to mounts, bolts and clamps before you remove them.
- Use stands as necessary to support parts as you detach them from your vehicle and again as you install new parts.

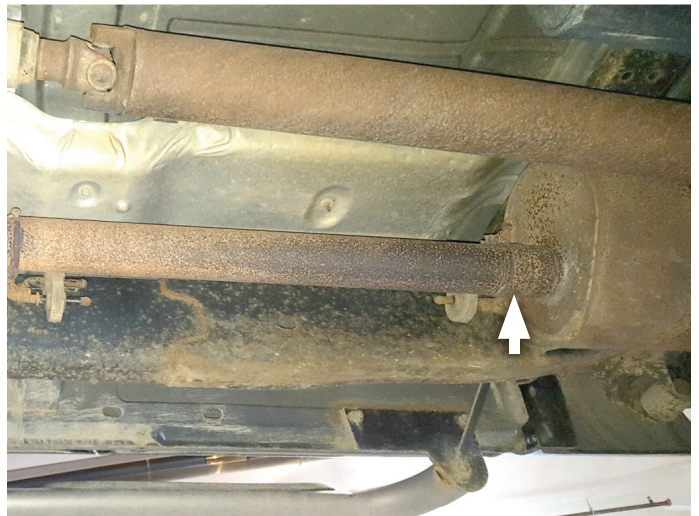


3. Cut tailpipe at muffler exit. Disassemble hanger wire from isolator and remove tailpipe section from vehicle.



4. Support muffler and disassemble wire hangers from isolators. Loosen ring clamp, disconnect inlet pipe then remove exhaust system.

**NOTE:** Clamp connection may need be heated or cut to be separated.



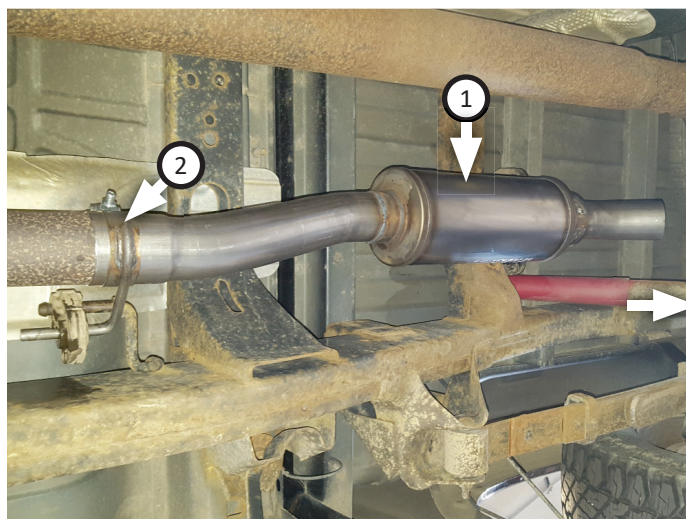
#### **INSTALL FLOWMASTER EXHAUST SYSTEM:**

5. Remove nuts from stock and Flowmaster clamps, apply anti-seize compound to bolts and re-install nuts.

**NOTE:** The image in this step is intended for illustrative purposes only and may or may not accurately reflect components included in your kit.



6. Place **clamp hanger (2)** onto **inlet pipe (1)** then insert (x3) hangers into isolators and connect it to exhaust pipe; lining inlet pipe notch up to front pipe tab. Tighten clamp enough to allow for adjustment.



7. Adjust muffler then secure vent hose and brake lines away from heat. Tighten clamp fully.  
8. Recommended: Secure slip-fit connections with a 1-inch tack weld then spray high-temp paint over each weld to prevent rust and premature corrosion.



Congratulations, the installation of your FLOWMASTER performance exhaust system is now complete!





Installation Diagram  
**717973**  
2006-08 DODGE RAM 1500  
5.7L ENGINE

