



Installation Instructions  
**717929**  
 2009-13 GM SILVERADO / SIERRA 1500  
 5.3L ENGINE  
 143" Wheelbase, Extended Cab / Short Bed

**OVERVIEW:**

1. Take a moment to read and understand these instructions before installing your Flowmaster performance system.

**NOTE:** Please inventory all parts now before continuing and if necessary, report any missing items to our tech line. This will avoid potentially stranding your vehicle until any missing replacement parts arrive.

ITM #	PART #	DESCRIPTION	QTY.
N/A	PK1015	Hardware Package includes:	1
4	514HA	Front Frame Hanger	1
5	MC300BS	3" Stainless Band Clamp	1
6	MC250BS	2½" Stainless Band Clamp	2
7	HA168	Red Rubber Hanger	1
8	HA572	Universal Bracket	1
9	HW225	5/16-18 x 3/4" Thread Cutting Bolt	2
10	HW208	3/8-16 x 1 Bolt	1
11	HW103	3/8-16 Nut	1
12	HW303	3/8" Flat Washer	2
13	HW309	3/8" Lock Washer	1
14	HW502	7/16" Hanger Keeper	2

ITM #	PART #	DESCRIPTION	QTY.
1	26781M	Inlet Pipe Assembly	1
2	72288-Z	FlowFX Muffler	1
3	86618M	Exit Pipe Assembly	1

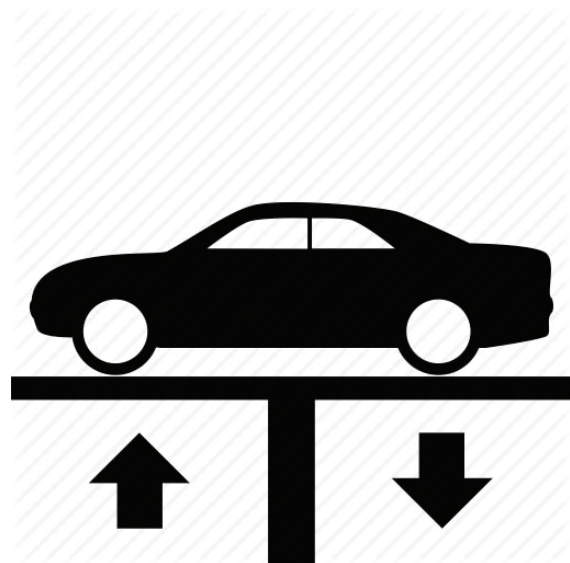
**REMOVE STOCK EXHAUST SYSTEM:**

2. Raise vehicle up on a hoist or rack to working height. If you don't have access to a hoist or rack, support vehicle with jack stands.

**WARNING:**  
 Avoid serious burns! Allow your vehicle time to cool completely before touching any factory engine components.

**To ease preparation and installation of your new kit:**

- Apply penetrating lubricant to mounts, bolts and clamps before you remove them.
- Use stands as necessary to support parts as you detach them from your vehicle and again as you install new parts.



3. Cut tailpipe just behind muffler outlet, disassemble wire hangers from isolators and remove cut tailpipe section.



4. Disassemble wire hanger from isolator, loosen ball clamp and remove muffler section. Release tab to remove ball clamp from pipe and retain it for later use.



## INSTALL FLOWMASTER EXHAUST SYSTEM

5. Remove nuts from stock and Flowmaster clamps, apply anti-seize compound to bolts and re-install nuts.

**NOTE:** The image in this step is intended for illustrative purposes only and may or may not accurately reflect components included in your kit.

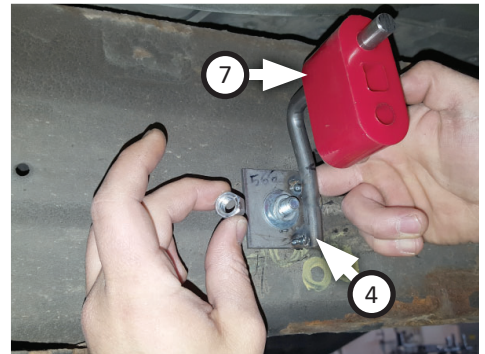
6. Every slip-fit connection must seat 2" deep. Find all slip fit components in your kit and mark them accordingly so Flowmaster exhaust system fits properly onto vehicle.



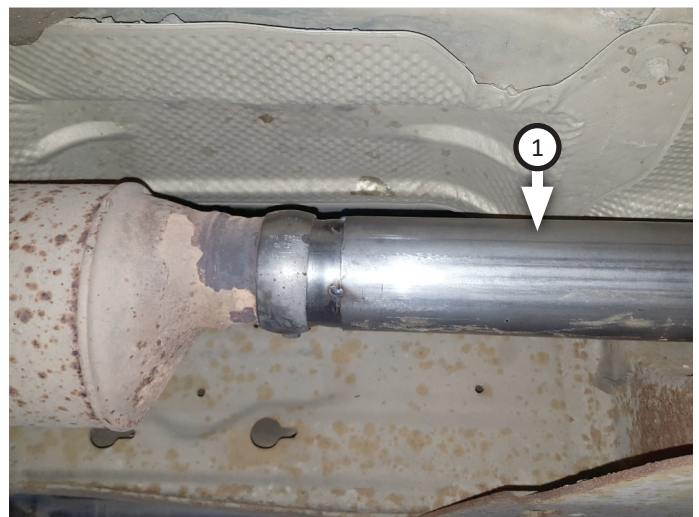


**NOTE:** Complete this step only if you have a 2009 vehicle.

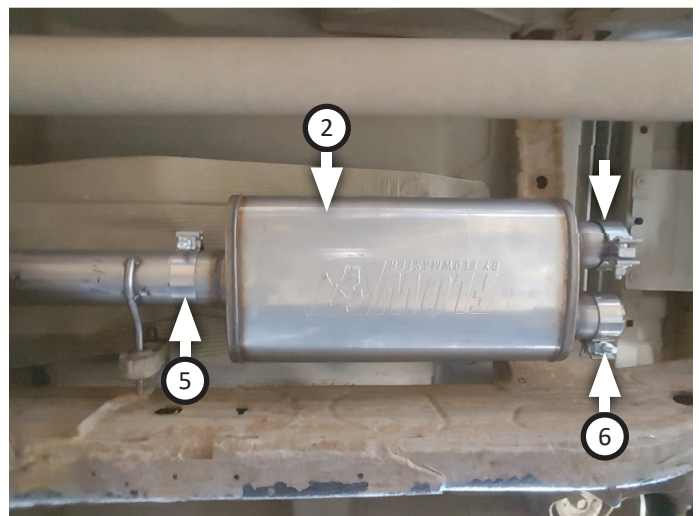
7. Remove isolator from frame. Mount **frame hanger (4)** using **bolt (10)**, (x2) **flat washers (12)**, **lock washer (13)** and **nut (11)** then mount **rubber hanger (7)**.



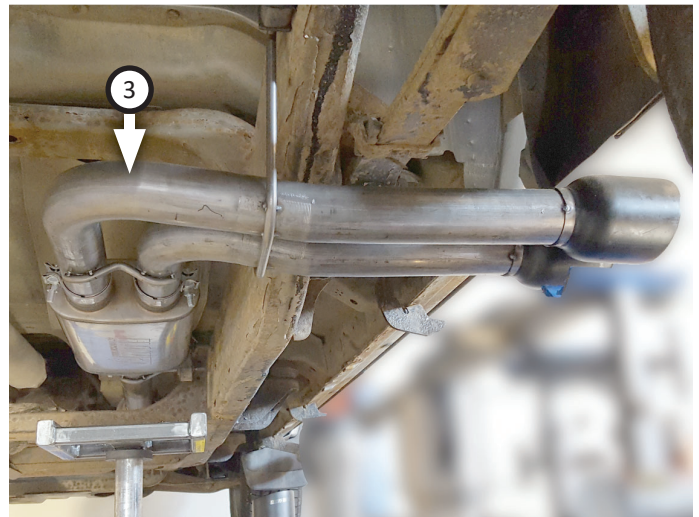
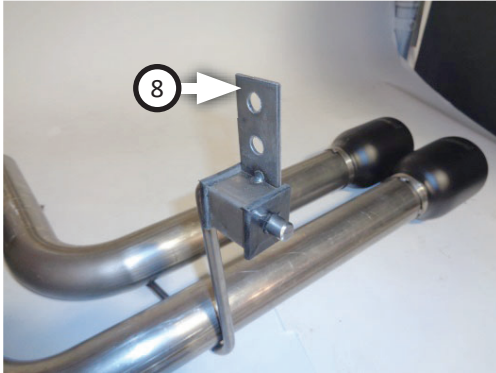
8. Place factory ball clamp (removed step 4) onto **inlet pipe (1)** then connect it to cat. converter. Insert wire hanger in isolator and tighten clamp enough to allow for adjustment.



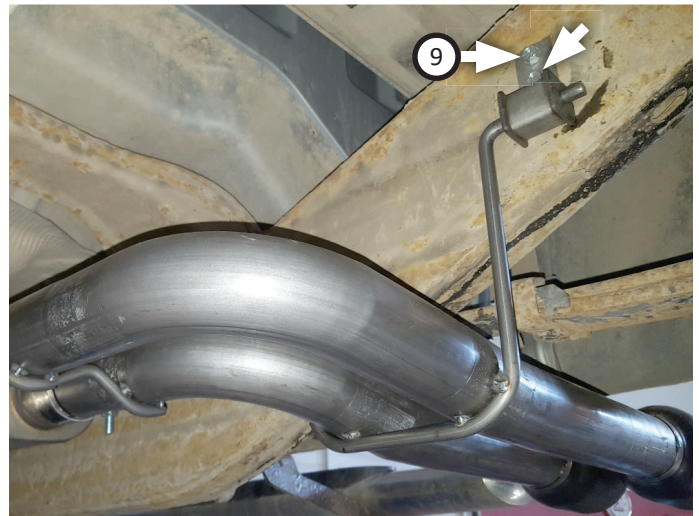
9. Place **clamp (5)** onto **muffler (2)** then connect it to inlet pipe. Tighten clamp just enough to allow for adjustment then place (x2) **clamps (6)** onto muffler outlets.



10. Slide **bracket (8)** onto **exit pipe (3)** wire hanger then connect it to muffler. Tighten clamp just enough to allow for adjustment.



11. Adjust exit pipe until tips are desired distance from body, then lay bracket flat against vehicle rail and mark holes (x2). Rotate bracket away, drill marks with a ¼" drill bit then secure bracket to rail using (x2) **bolts (9)**.



12. Adjust system for fit; maintain ½" clearance, compensate for suspension and vibration. Tighten all clamps and fit **hanger keeper (14)** onto sideways hanger.  
13. Recommended: Secure slip-fit connections with a 1-inch tack weld. Spray high-temp paint over each weld to prevent rust and premature corrosion.

Congratulations, the installation of your FLOWMASTER performance exhaust system is now complete!





Installation Diagram  
**717929**  
2009-13 GM SILVERADO/SIERRA 1500  
5.3L ENGINE  
143" Wheelbase, Extended Cab / Short Bed

