



Installation Instructions
717918
 2016-19 TOYOTA TACOMA
 3.5L ENGINE
 2/4 WD & All Wheelbases

OVERVIEW:

1. Take a moment to read and understand these instructions before installing your Flowmaster performance system.

NOTE: Please inventory all parts now before continuing and if necessary, report any missing items to our tech line. This will avoid potentially stranding your vehicle until any missing replacement parts arrive.

ITM #	PART #	DESCRIPTION	QTY.
1	86596M	Inlet Pipe	1
2	TB472M	Extension Pipe	1
3	72268-Z	FFX Muffler	1
4	16530M	Left Front Tailpipe	1
5	86594M	Left Tailpipe	1
6	86595M	Right Tailpipe	1
7	ST507B	Tips	2

ITM #	PART #	DESCRIPTION	QTY.
N/A	PK816	Hardware Pack includes:	1
8	371HA	Left Rear Hanger Assembly	1
9	386HA	Front Inlet Clamp Hanger	1
10	MC250BS	2½" Stainless Band Clamp	4
11	HA168	Red Rubber Hanger	1
12	HW103	¾-16 Z 5 Nut	1
13	HW209	¾-16 x 1¼ HC Screw	1
14	HW309	¾" Lock Washer	1
15	HW502	¾" Hanger Keeper	2

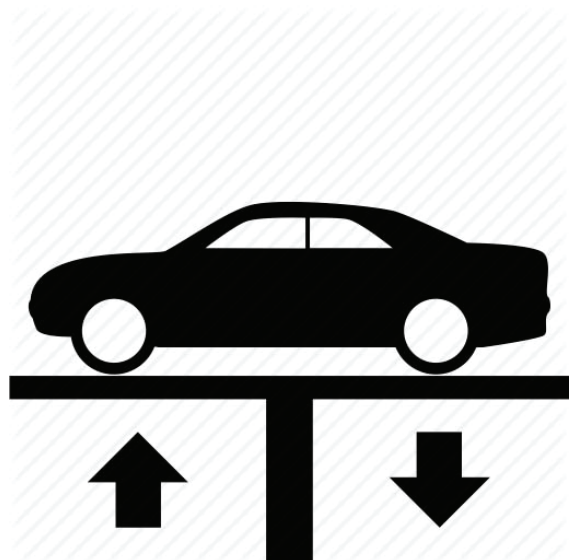
REMOVE STOCK EXHAUST SYSTEM:

2. Raise vehicle up on a hoist or rack to working height. If you don't have access to a hoist or rack, support vehicle with jack stands.

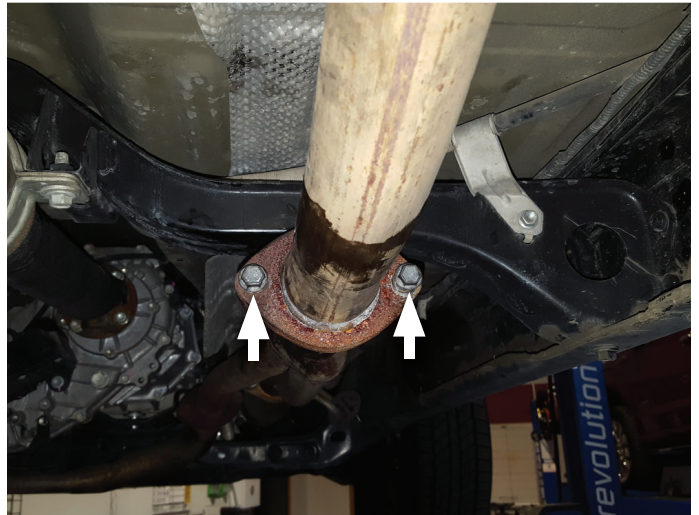
WARNING:
 Avoid serious burns! Allow your vehicle time to cool completely before touching any factory engine components.

To ease preparation and installation of your new kit:

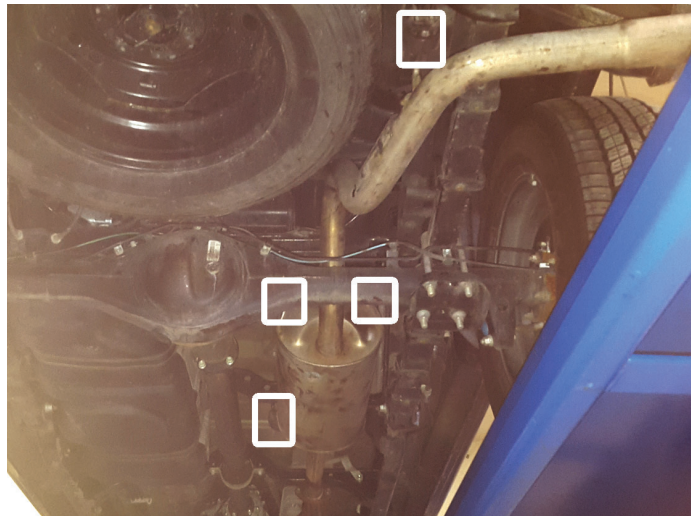
- Apply penetrating lubricant to mounts, bolts and clamps before you remove them.
- Use stands as necessary to support parts as you detach them from your vehicle and again as you install new parts.



3. Remove flange bolts (x2) and disconnect factory exhaust at catalytic converter. Retain bolts for later use.



4. Disassemble factory exhaust wire hangers (x4) from isolators then remove system completely from vehicle.



INSTALL FLOWMASTER EXHAUST SYSTEM

5. Remove nuts from stock and Flowmaster clamps, apply anti-seize compound to bolts and re-install nuts.
NOTE: The image in this step is intended for illustrative purposes only and may or may not accurately reflect components included in your kit.
6. Every slip fit connection in this kit must seat 3" deep except for muffler connections which must seat 2" deep. Find all slip fit components in your kit and mark them accordingly so your Flowmaster exhaust system fits properly onto your vehicle.



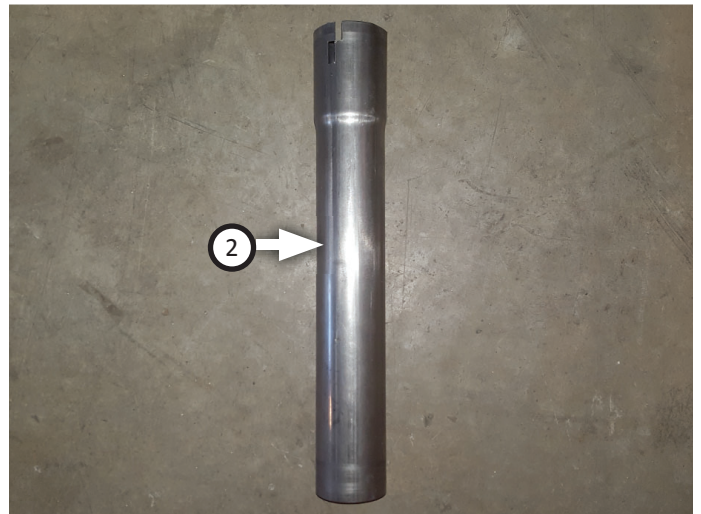
- Fasten **inlet pipe (1)** to catalytic converter using bolts (x2) (removed step 3). Orient pipe with bend facing upward as shown.



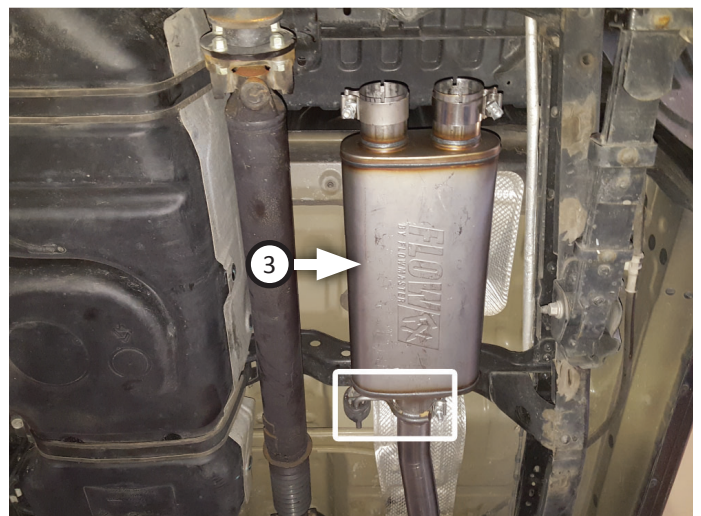
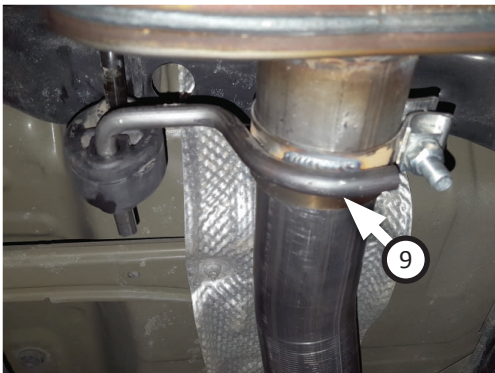
NOTE: If your vehicle matches the specifications listed below, complete this step. Otherwise, proceed to step 8.

WHEEL BASE	BODY STYLE	BED LENGTH
141"	Double Cab	Long Bed Trucks

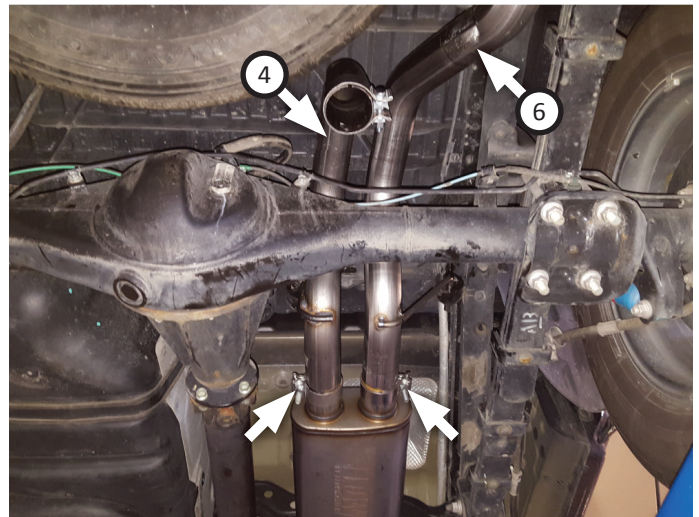
- Place **clamp (10)** onto **extension pipe (2)** then connect it to inlet pipe.



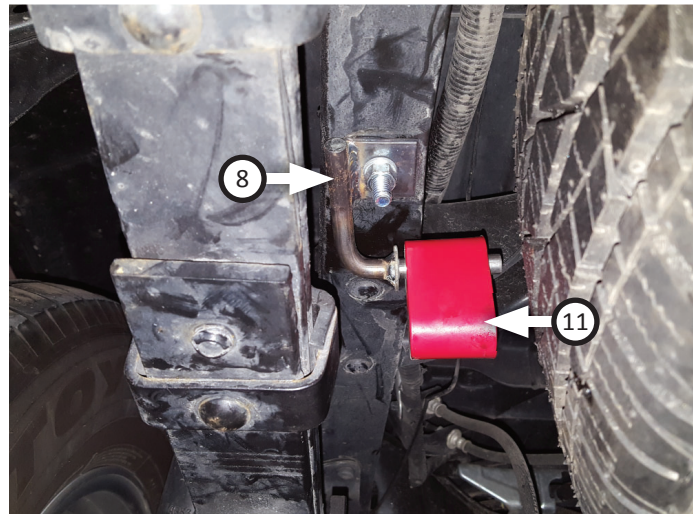
- Place **front inlet clamp hanger (9)** onto **muffler (3)** inlet and **clamps (x2) (10)** onto outlets. Connect muffler to pipe, insert wire hanger into isolator and tighten front clamp enough to allow for adjustment.



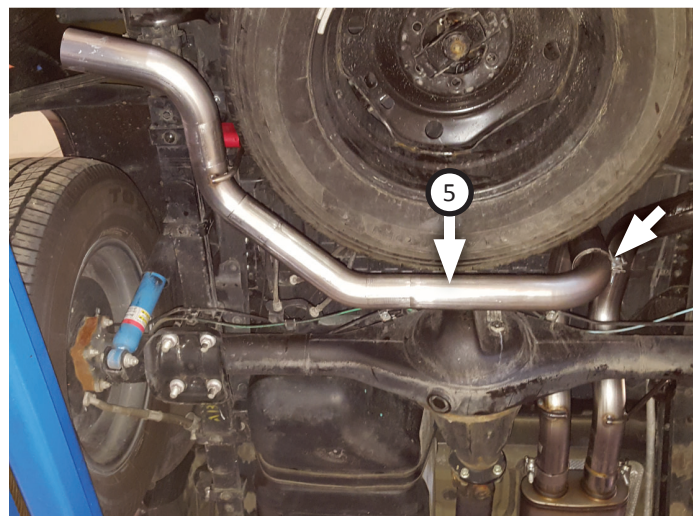
10. Route **right tailpipe (6)** and **left front tailpipe (4)** over axle and connect them to muffler outlets. Mount wire hangers into isolators then tighten clamps (x2) enough to allow for adjustment.



11. Secure **left rear hanger assembly (8)** to vehicle using **bolt (13)** through frame, mount, **lock washer (14)** and **nut (12)**. Fit **rubber hanger (11)** onto end of hanger. Leave assembly loose to allow for adjustment.



12. Place **clamp (10)** onto **left tailpipe (5)** then connect it to left front tailpipe. Hang wire hanger into rubber hanger then tighten clamp enough to allow for adjustment. Fasten rubber hanger assembly completely.



13. Connect **tips (x2) (7)** to side exit pipes and secure connections.



14. Adjust exhaust components for fit; maintaining ½" clearance and compensating for suspension, travel and vibration then fit **hanger keepers (x2) (15)** onto each sideways hanger.
15. Recommended: Secure slip-fit connections with a 1-inch tack weld then spray high-temp paint over each weld to prevent rust and premature corrosion.

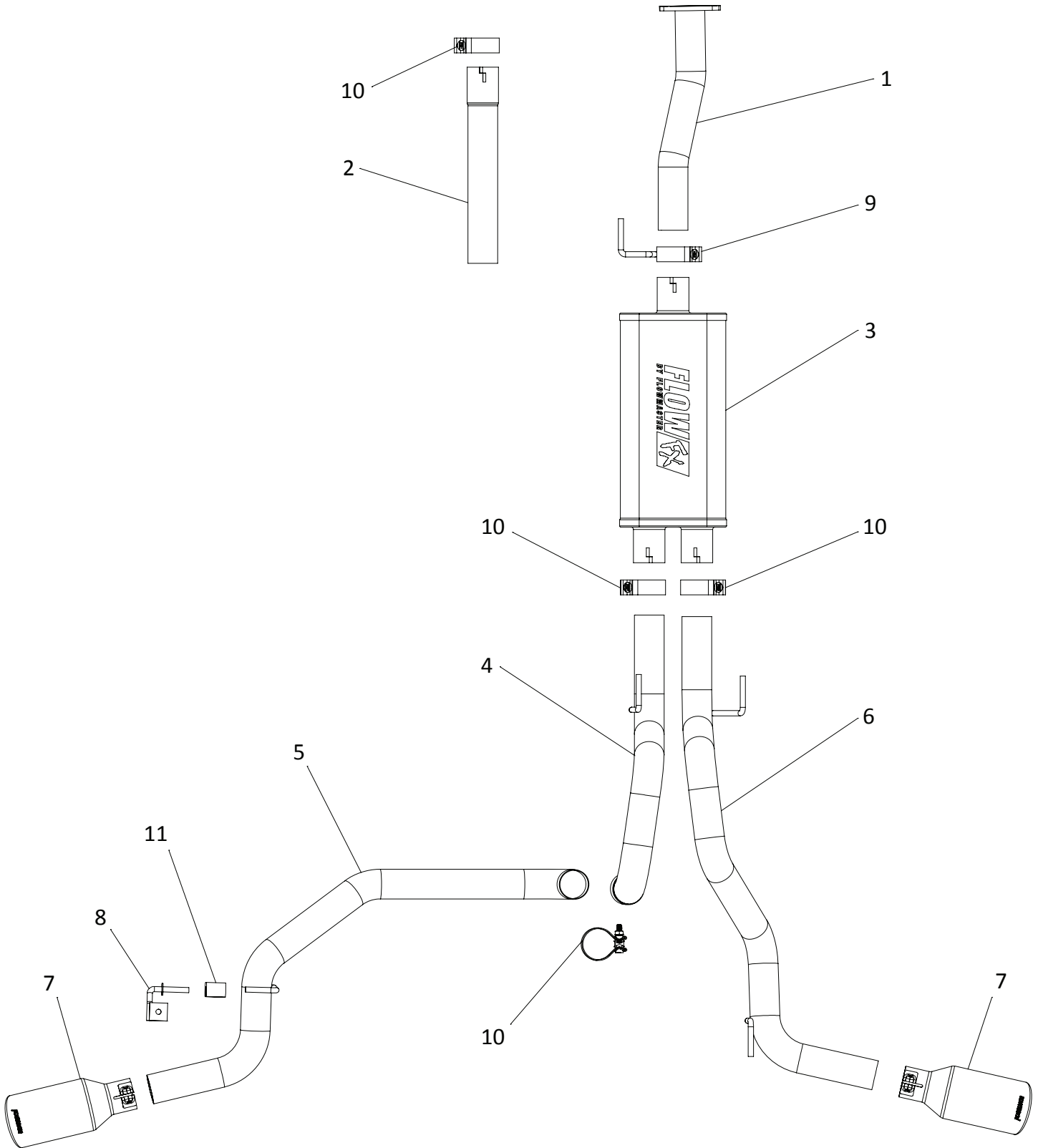


Congratulations, the installation of your FLOWMASTER performance exhaust system is now complete!





Installation Diagram
717918
2016-19 TOYOTA TACOMA
3.5L ENGINE
2/4 WD & All Wheelbases



[View other performance exhaust systems made by Flowmaster on our website.](#)