



Installation Instructions  
**717892**  
 1987-01 CHEROKEE 4.0L &  
 1986-00 CHEROKEE 2.5L

**OVERVIEW:**

1. Take a moment to read and understand these instructions before installing your Flowmaster performance system.

**NOTE:** Please inventory all parts now before continuing and if necessary, report any missing items to our tech line. This will avoid potentially stranding your vehicle until any missing replacement parts arrive.

ITM #	PART #	DESCRIPTION	QTY.
N/A	PK1007	Hardware Pack includes:	1
7	510HA	Rear Hanger Assembly	1
8	SF146	2 Bolt Flange	1
9	MC225BS	2¼" Stainless Band Clamp	1
10	MC250BS	2½" Stainless Band Clamp	3
11	HW221	¾-16 x 2¼ HCS Keg Z5 Bolt	2
12	HW103	FHN ¾-16 Z 5	2
13	HW303	¾" Flat Washer	4
14	HW309	¾" Lock Washer	2
15	HW503	½" Hanger Keeper	1

ITM #	PART #	DESCRIPTION	QTY.
1	TB912M	Inlet Pipe	1
2	913TBM	Inlet Adapter	1
3	TB915M	Extension Pipe	1
4	71416-Z	FFX Muffler	1
5	86602M	Front Tailpipe	1
6	86600M	Tailpipe Assembly	1

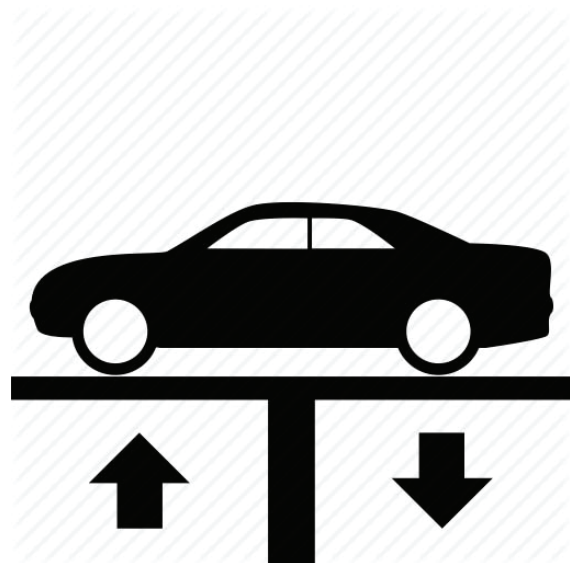
**REMOVE STOCK EXHAUST SYSTEM:**

2. Raise vehicle up on a hoist or rack to working height. If you don't have access to a hoist or rack, support vehicle with jack stands.

**WARNING:**  
 Avoid serious burns! Allow your vehicle time to cool completely before touching any factory engine components.

**To ease preparation and installation of your new kit:**

- Apply penetrating lubricant to mounts, bolts and clamps before you remove them.
- Use stands as necessary to support parts as you detach them from your vehicle and again as you install new parts.



3. Loosen bolts securing clamp on front of muffler. Cut exhaust pipe behind muffler exit then remove muffler section from vehicle.



4. Remove bolts (x2) and hanger mount near exhaust exit then remove tailpipe. Retain bolts for later use.



## INSTALL FLOWMASTER EXHAUST SYSTEM

5. Remove nuts from stock and Flowmaster clamps, apply anti-seize compound to bolts and re-install nuts.

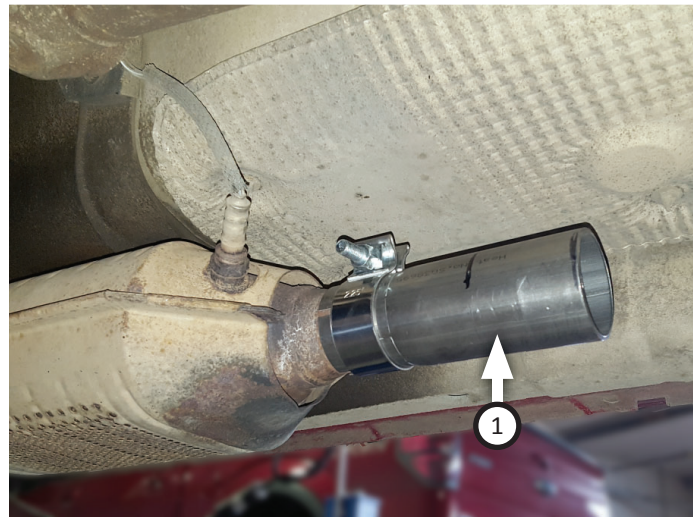
**NOTE:** The image in this step is intended for illustrative purposes only and may or may not accurately reflect components included in your kit.

6. Every slip fit connection in this kit must seat 3" deep except for muffler connections which must seat 2" deep. Find all slip fit components in your kit and mark them accordingly so your Flowmaster exhaust system fits properly onto your vehicle.





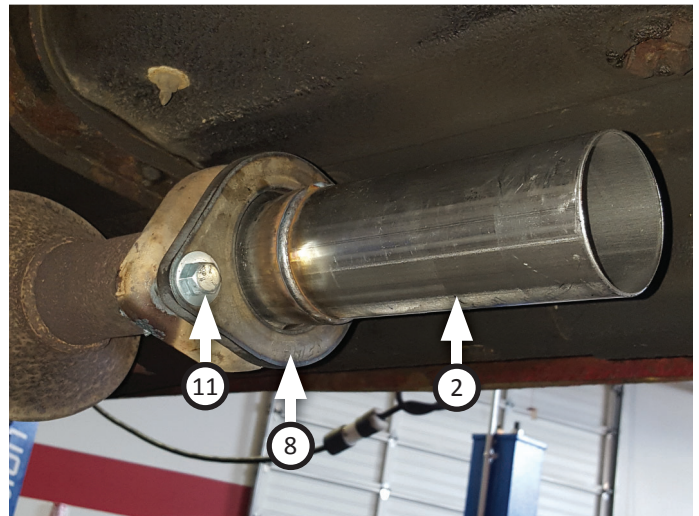
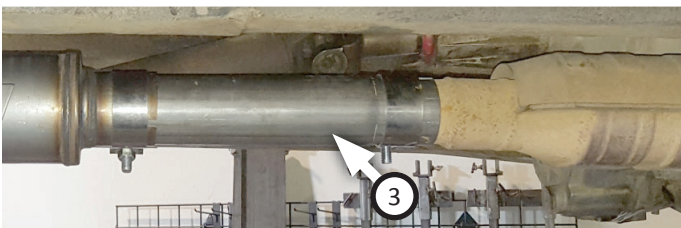
7. Place **clamp (9)** onto **inlet pipe (1)** then connect it to catalytic converter. Tighten clamp just enough to allow for adjustment.



This note is intended for modified Jeeps or mid 2000 production - 2001 Cherokee 4.0L models.

**Modified Jeep:** If your exhaust (cat.) has been modified, you may use **extension pipe (3)** to adapt for kit fitment.

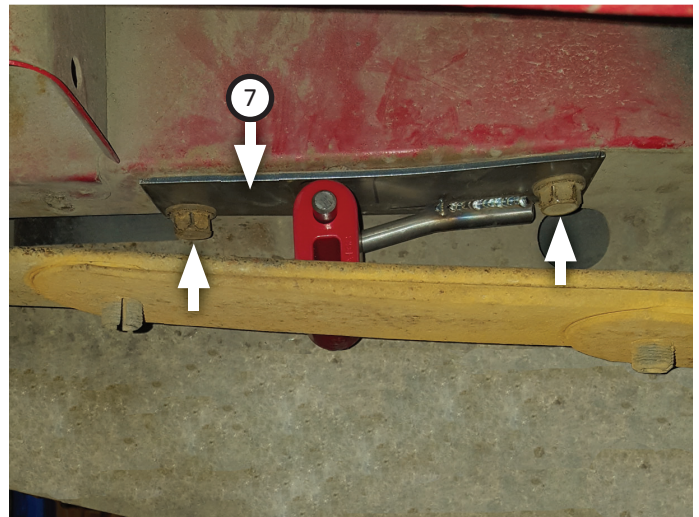
**2000-01 Cherokee 4.0L models:** Install **inlet adapter (2)** with (x2 ea) **bolts (11)**, **flat washers (x2) (13)**, **2 bolt flange (8)**, **lock washers (14)** and **nuts (12)**.



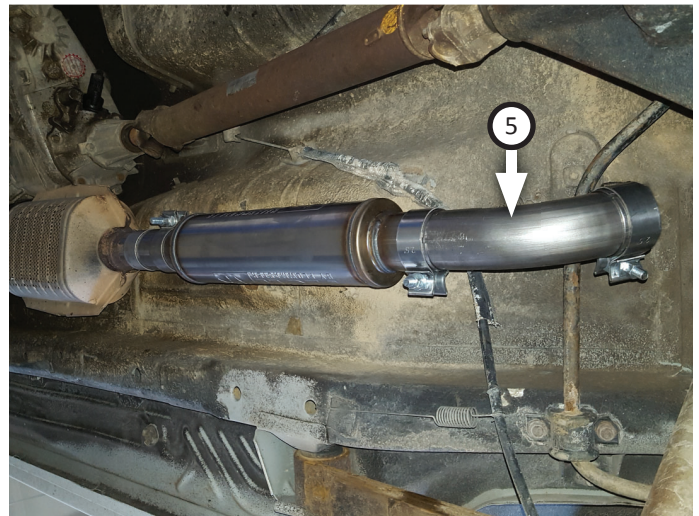
8. Place **clamp (10)** onto **FFX muffler (4)** then connect it to inlet pipe. Tighten clamp just enough to allow for adjustment. Set another **clamp (10)** onto muffler outlet.



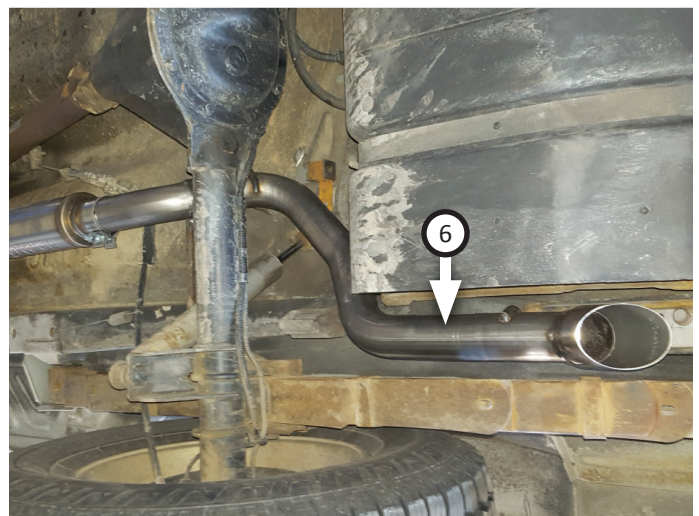
9. Install **rear frame hanger assembly (7)** to frame near exhaust exit using bolts (x2) (removed step 4).



10. Connect **front tailpipe (5)** to muffler with its end oriented as shown. Place another **clamp (10)** onto end.



11. Route **tailpipe assembly (6)** over axle and connect it to front tailpipe. Insert wire hangers (x2) into isolators and tighten clamp enough to allow for adjustment.





12. Adjust exhaust components for fit; maintaining ½" clearance and compensating for suspension, travel and vibration. Finally tighten all clamps. Finally, fit **hanger keeper (15)** onto each sideways hanger.
13. Recommended: Secure slip-fit connections with a 1-inch tack weld then spray high-temp paint over each weld to prevent rust and premature corrosion.



---

Congratulations, the installation of your FLOWMASTER performance exhaust system is now complete!





Installation Diagram  
**717892**  
1987-01 CHEROKEE 4.0L &  
1986-00 CHEROKEE 2.5L

