



Installation Instructions

717873

1999-06 SILVERADO 1500 ('07 CLASSIC)
 GMC SIERRA 1500 ('07 CLASSIC)
 4.3L, 4.8L, 5.3L ENGINE

OVERVIEW:

1. Take a moment to read and understand these instructions before installing your Flowmaster performance system.

NOTE: Please inventory all parts now before continuing and if necessary, report any missing items to our tech line. This will avoid potentially stranding your vehicle until any missing replacement parts arrive.

ITM #	PART #	DESCRIPTION	QTY.
N/A	PK1013	Hardware Package includes:	1
5	511HA	'99-'05 Rear Clamp Hanger	1
6	515HA	'06 Rear Clamp Hanger	1
7	MC300BS	3" Stainless Band Clamp	1
8	227HA	'99 Right Frame Hanger	1
9	HA168	Red Rubber Hanger	1
10	HA566	'04 Back Up Plate	2
11	HW209	3/8-16 x 1 1/4 HC Bolt Z 5	1
12	HW103	3/8-16 Z 5 Nut	1
13	HW303	3/8" Flat Washer	1
14	HW309	3/8" Lock Washer	1
15	HW502	7/16" Hanger Keeper	2
16	HW503	1/2" Hanger Keeper	2

ITM #	PART #	DESCRIPTION	QTY.
1	26779M	Inlet Pipe Assembly	1
2	71249-Z	FlowFX Muffler	1
3	26780M	Tailpipe Assembly	1
4	ST509B	Tips	1

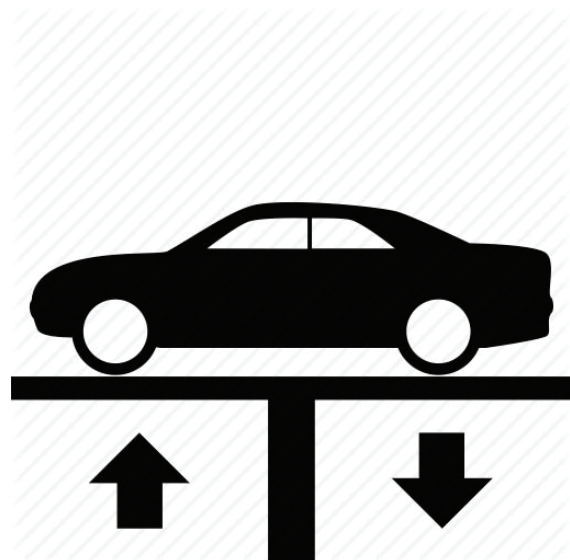
REMOVE STOCK EXHAUST SYSTEM:

2. Raise vehicle up on a hoist or rack to working height. If you don't have access to a hoist or rack, support vehicle with jack stands.

WARNING:
 Avoid serious burns! Allow your vehicle time to cool completely before touching any factory engine components.

To ease preparation and installation of your new kit:

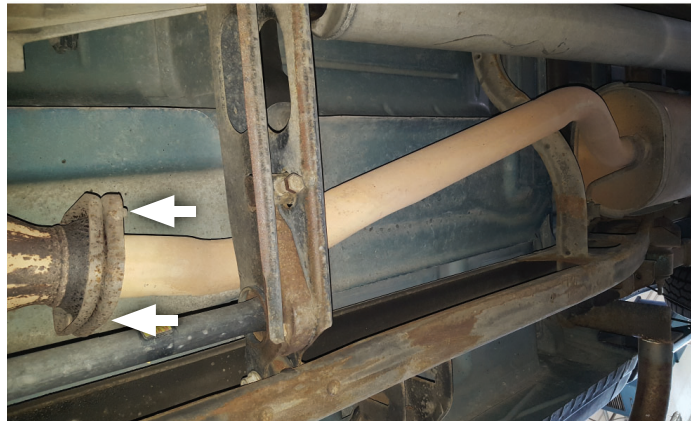
- Apply penetrating lubricant to mounts, bolts and clamps before you remove them.
- Use stands as necessary to support parts as you detach them from your vehicle and again as you install new parts.



3. Cut tailpipe at muffler exit. Disassemble hanger wires from isolators and remove tailpipe section from vehicle.



4. Support muffler and remove nuts (x2) from inlet pipe flange. Disassemble wire hangers from isolators and remove exhaust system. Retain nuts for later use.



INSTALL FLOWMASTER EXHAUST SYSTEM

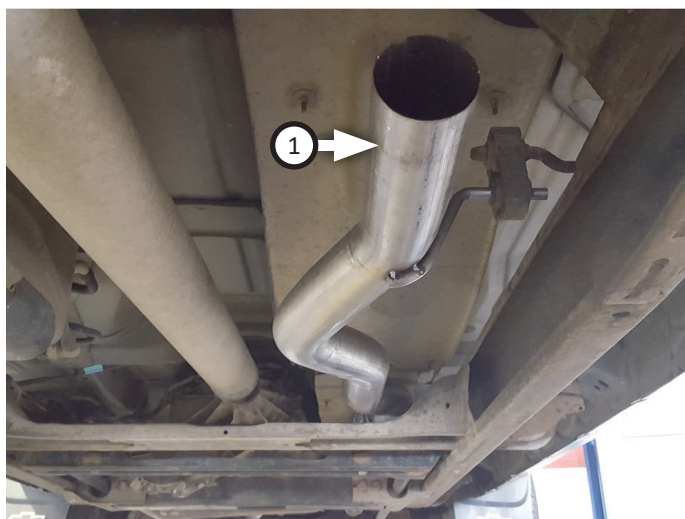
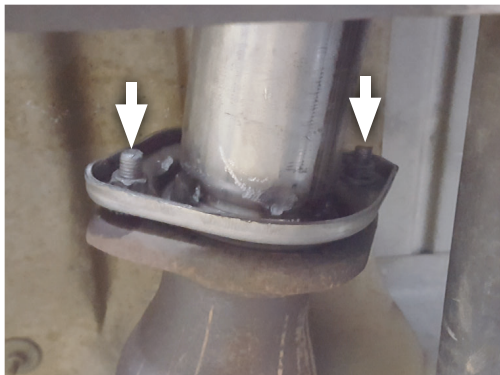
5. Remove nuts from stock and Flowmaster clamps, apply anti-seize compound to bolts and re-install nuts.

NOTE: The image in this step is intended for illustrative purposes only and may or may not accurately reflect components included in your kit.

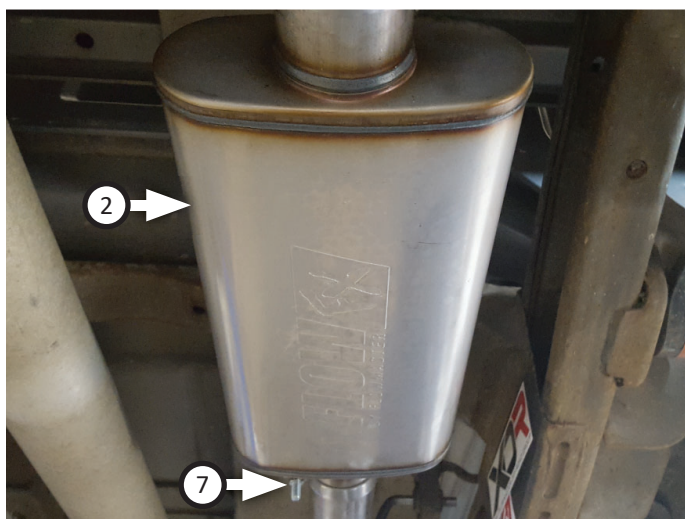
6. Every slip fit connection in this kit must seat 3" deep except for muffler connections which must seat 2" deep. Find all slip fit components in your kit and mark them accordingly so your Flowmaster exhaust system fits properly onto your vehicle.



7. Secure **inlet pipe (1)** flange to cat. converter flange using nuts (x2) (removed step 4).

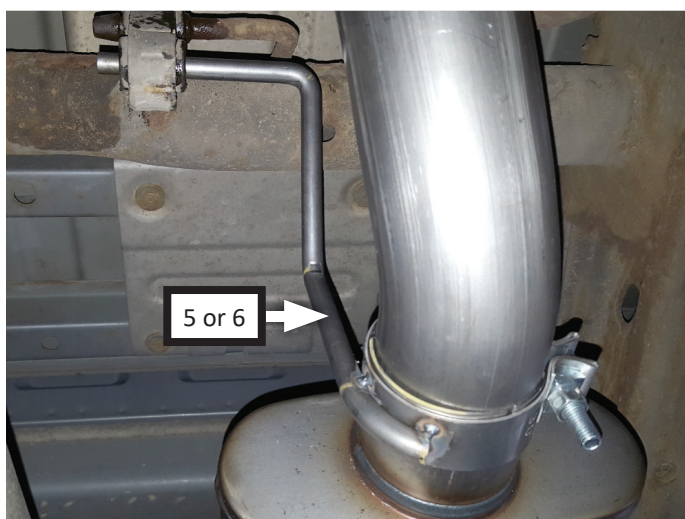


8. Place **clamp (7)** onto **muffler (2)** then connect it to inlet pipe. Tighten clamp just enough to allow for adjustment.

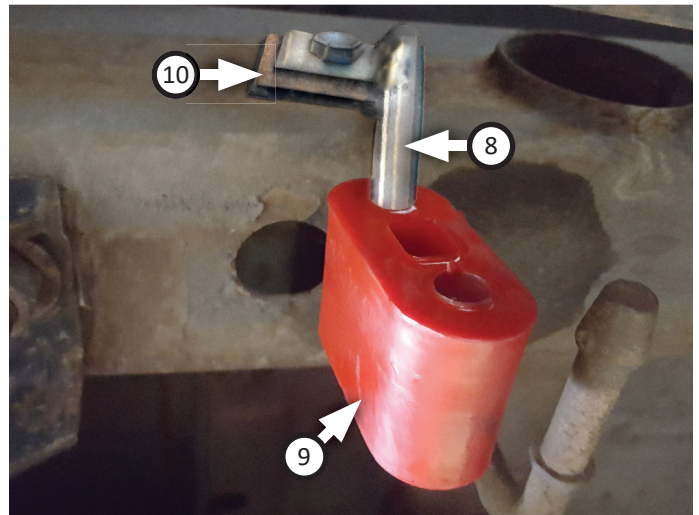


NOTE: Step 9 and 10 use different parts depending on application year range. Determine the year of your vehicle before following the appropriate corresponding step.

9. **1999-05:** Place **rear clamp hanger (5)** onto muffler outlet.
10. **2006 & 2007 Classic:** Place **rear clamp hanger (6)** onto muffler outlet.



11. Fasten **right frame hanger (8)** to vehicle using **bolt (11)**, **backing plates (x2) (10)**, **flat washer (13)**, **lock washer (14)** and **nut (12)** as shown. Then hang **rubber hanger (9)** on frame hanger end.



12. Route **tailpipe assembly (3)** over axle then connect it to muffler. Mount wire hanger and tighten clamp.
13. Place **tip (4)** onto tailpipe and tighten inlet. Rotate assembly until angle cut on tip is properly positioned.



14. Adjust exhaust components for fit; maintaining $\frac{1}{2}$ " clearance and compensating for suspension, travel and vibration then tighten all clamps. Fit (x2 ea.) $\frac{7}{16}$ " (15) and $\frac{1}{2}$ " (16) hanger keepers onto each sideways hanger.
15. Recommended: Secure slip-fit connections with a 1-inch tack weld then spray high-temp paint over each weld to prevent rust and premature corrosion.

Congratulations, the installation of your FLOWMASTER performance exhaust system is now complete!





Installation Diagram
717873
1999-06 SILVERADO 1500 ('07 CLASSIC)
GMC SIERRA 1500 ('07 CLASSIC)
4.3L, 4.8L, 5.3L ENGINE

