



Installation Instructions for
717871
CAT-BACK FFX DOS
FITS: 2015-2018 FORD F-150 TRUCKS
WITH 2.7L, 3.5L, 5.0L ENGINES

OVERVIEW:

1. Please take a moment to read and understand these instructions before installing your Flowmaster performance system. Use the parts drawing and list to verify exhaust system contents.

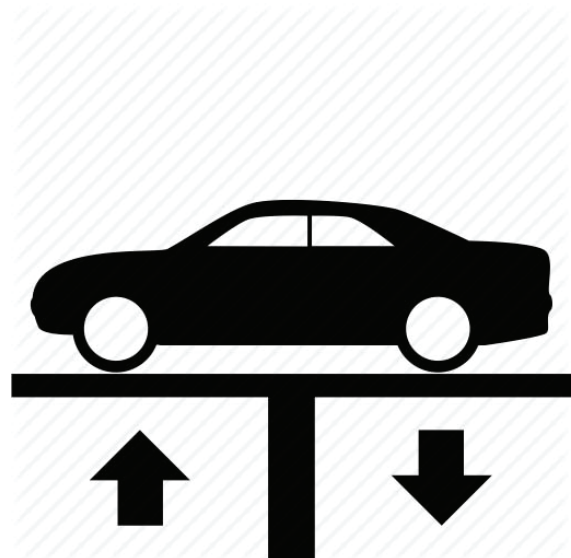
PART NO.	DESCRIPTION	QTY.
26737M	Inlet Pipe Assy	1
26277M	Extension Pipe	1
72288-Z	Muffler	1
86327M	Right Tailpipe	1
86323M	Left Overaxle Pipe	1
86324M	Left Rear Tailpipe	1
86552M	Side Exit Pipe	2
ST507B	Tips	2

PART NO.	DESCRIPTION	QTY.
PK800	Hardware Pack	1
490HA	Front Clamp Hanger Assy	1
226HA	Left Frame Hanger	1
HA226	Back Up Plate	1
MC250BS	2½" Band Clamp	5
MC300BS	3" Band Clamp	2
HW502	7/16" Hanger Keepers	2
HA168	Rubber Hanger	1
HW234	3/8" x 3-½" Tap Bolt	1
HW211	3/8" X 2" Bolt	2
HW303	3/8" Flat Washer	4
HW309	3/8" Lock Washer	3
HW103	3/8" Nut	3

REMOVE STOCK EXHAUST SYSTEM:

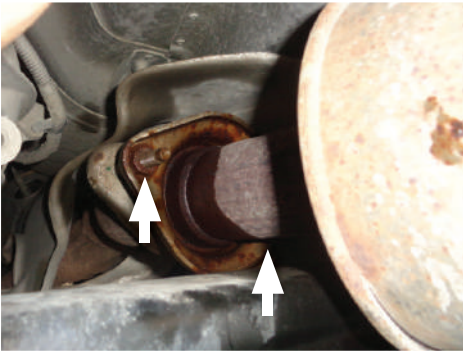
2. Raise vehicle up on a hoist or rack to working height. If you don't have access to a hoist or rack, raise vehicle and support securely with jack stands. Use penetrating lubricant as necessary to ease disassembly.

WARNING:
 Avoid serious burns! Allow vehicle time to cool completely before removing factory exhaust system.

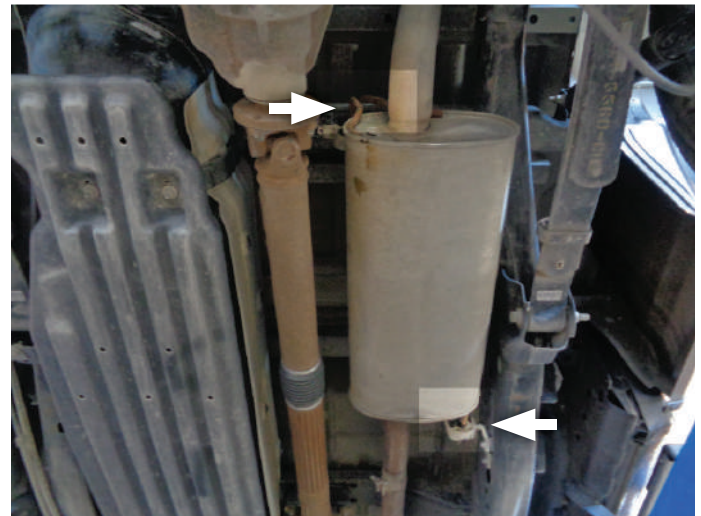


NOTE: Use stands as necessary to support parts as you detach them from your vehicle.

3. Remove nuts from flange and disconnect but do not remove factory exhaust from catalytic converter.



4. Disconnect factory muffler wire hangers (x2) from isolators on vehicle frame.



NOTE: Remove exhaust assembly from vehicle with the assistance of another person.

5. Disconnect tailpipe wire hanger from isolator then remove factory exhaust assembly from vehicle.



INSTALL FLOWMASTER EXHAUST SYSTEM

- Remove nuts from stock and Flowmaster clamps, apply anti-seize compound to bolts and re-install nuts.

NOTE: The image in this step is intended for illustrative purposes only and may or may not accurately reflect components included in your kit.

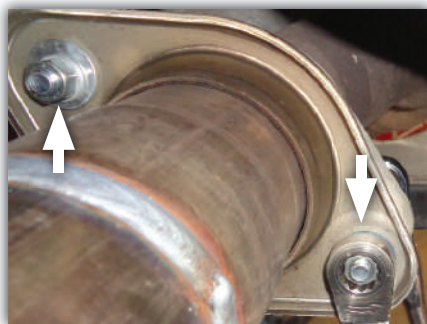
- Every slip fit connection in this kit must seat 3" deep except for the (x3) muffler connections which must seat 2" deep. Locate all components in your kit with a slip fit connection and mark them accordingly so your Flowmaster exhaust system fits properly onto your vehicle.



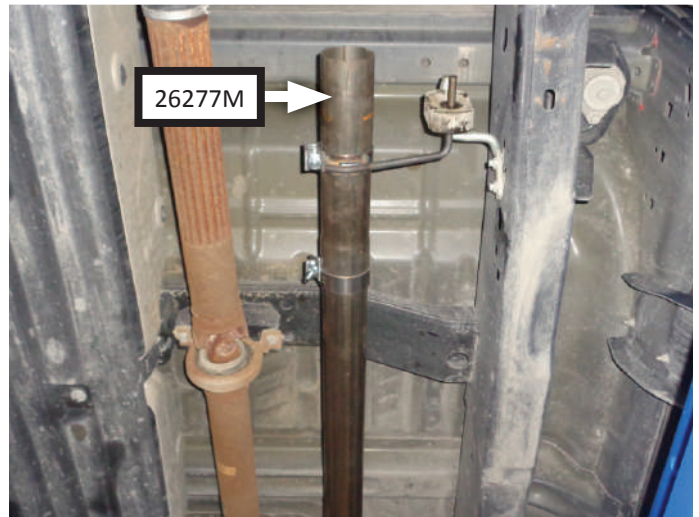
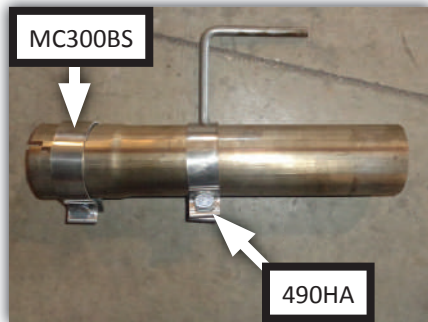
- If your vehicle falls within the specifications listed below, apply the corresponding modifications or assembly combinations to this kit to ensure it will install properly.

WHEEL BASE	BODY STYLE	BED LENGTH	INLET ASSY:	MODIFICATION
141"	Regular Cab	8'	Inlet Pipe only	Trim 4" from inlet pipe
145"	SuperCrew	5.5'	Inlet Pipe only	None
145"	SuperCab	6.5'	Inlet Pipe only	None
157"	SuperCrew	6.5'	Inlet+Extension	Trim 6" from extension pipe
163"	SuperCab	8'	Inlet+Extension	None

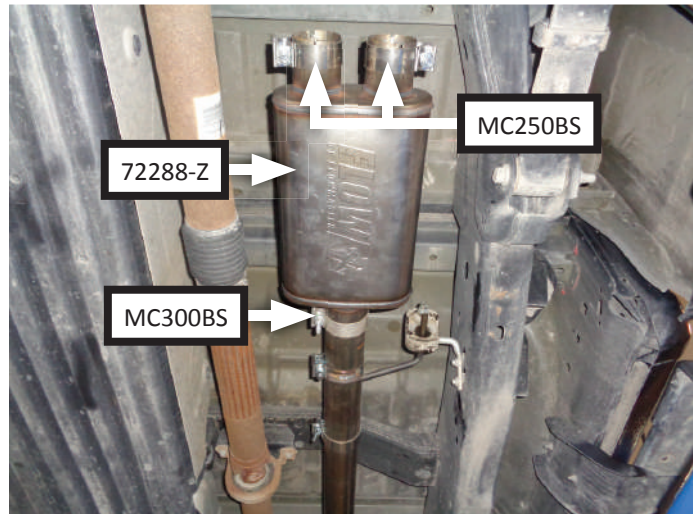
- Connect **inlet pipe assy (26737M)** to catalytic converter and secure using (2 ea.) $\frac{3}{8}$ " x 2" bolt (HW211), $\frac{3}{8}$ " flat washer (HW303), $\frac{3}{8}$ " lock washer (HW309) and $\frac{3}{8}$ " nut (HW103).



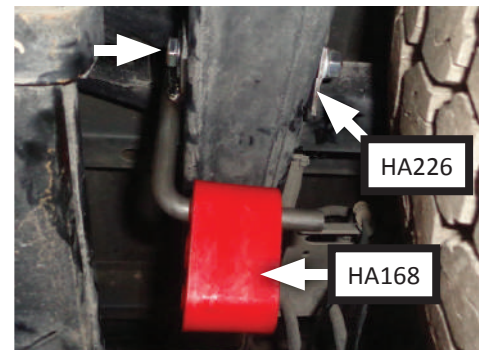
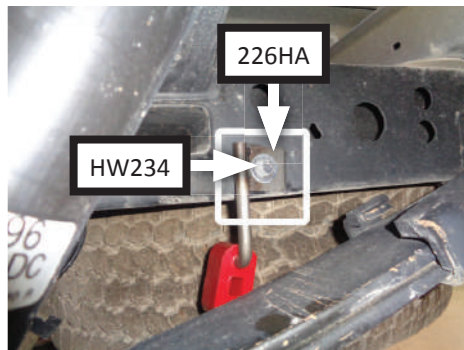
10. Place 3" clamp (MC300BS) and front clamp hanger assembly (490HA) onto extension pipe (26277M). Hang assembly onto vehicle frame and connect to inlet pipe.



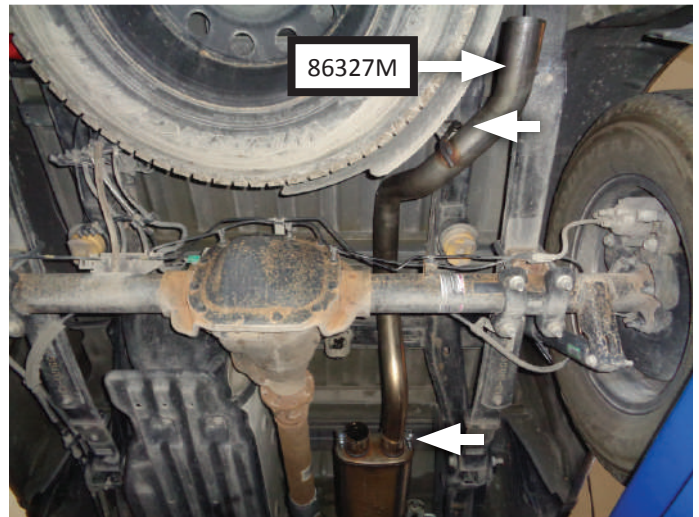
11. Place 3" clamp (MC300BS) onto muffler (72288-Z) inlet then connect muffler to inlet pipe or extension. Place 2.5" clamps (x2) (MC250BS) onto muffler outlets. Tighten front clamp just enough to allow for adjustment.



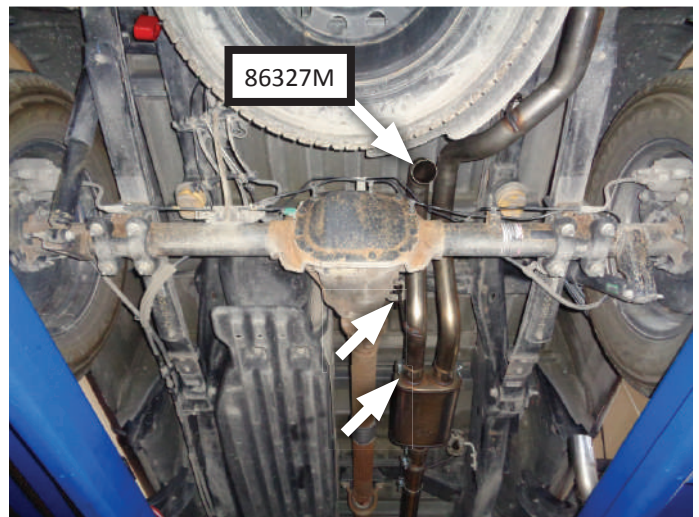
12. Mount parts assembly onto vehicle frame in following order: 5/8" x 3-1/2" tap bolt (HW234), 3/8" flat washer (HW303), 3/8" left frame hanger (226HA), vehicle frame, back up plate (HA226), 3/8" flat washer (HW303), 3/8" lock washer then 3/8" nut. Then install rubber hanger (HA168) onto left frame wire hanger.



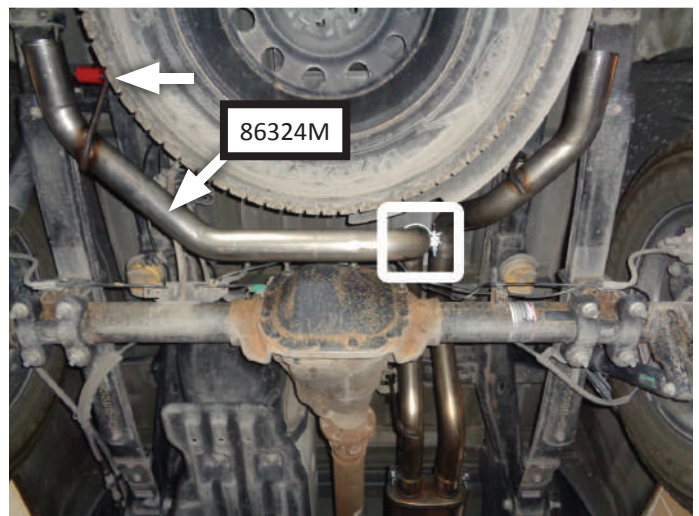
13. Route **right tailpipe (86327M)** over rear axle then connect it to passenger side muffler outlet. Insert wire hanger into stock mount to complete connection. Tighten clamp just enough to allow for adjustment.



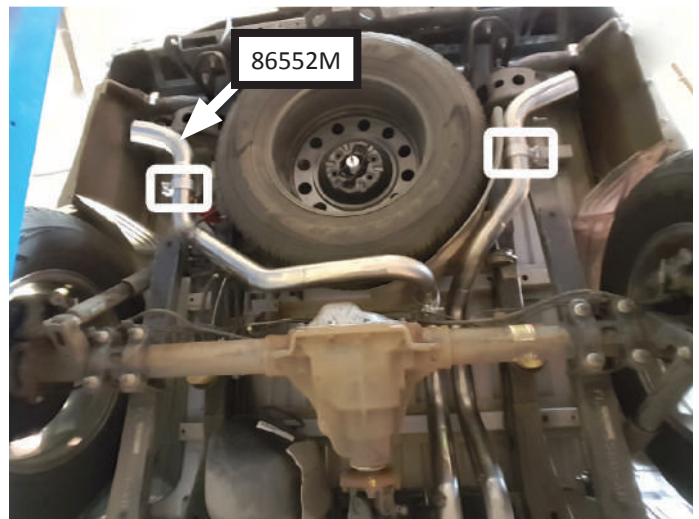
14. Route **left overaxle pipe (86323M)** over rear axle then connect it to driver side muffler outlet. Insert wire hanger into stock mount to complete connection. Tighten clamp just enough to allow for adjustment.



15. Place **2.5" clamp (MC250BS)** onto **left rear tailpipe (86522M)** inlet then connect it to left overaxle pipe. Mount wire hanger into rubber hanger. Tighten clamp just enough to allow for adjustment.

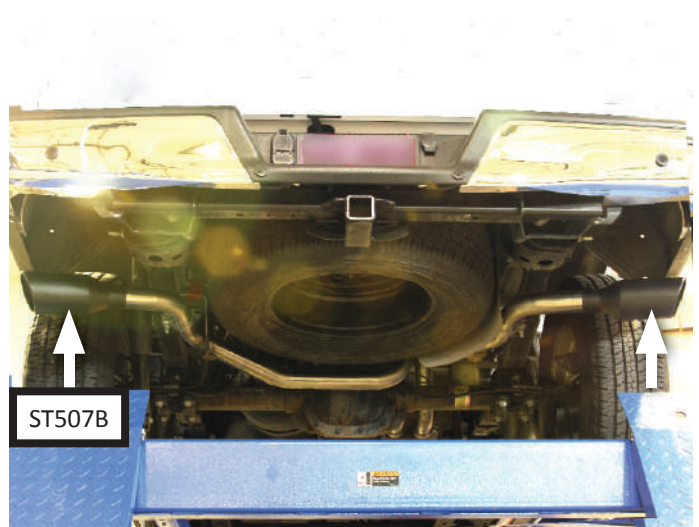


16. Place (x2 ea.) **2.5" clamps (MC250BS)** onto slip-fit of **rear exit pipes (86552M)** then connect them to rear tailpipes. Tighten clamps just enough to allow for adjustment.



17. Place **tips (x2) (ST507B)** onto each rear exit pipe.
18. Adjust exhaust components to provide a satisfactory fit. Maintain a minimum of $\frac{1}{2}$ " clearance around all components of exhaust system, keeping in mind suspension, travel and vibration. After making any required adjustments, securely tighten clamps.
19. Install **hanger keepers (HW502)** onto left frame hanger (installed step 12) to secure components.
20. We recommend applying a one inch tack weld to all slip-fit connections for a more secure installation. You may also apply high temperature paint over welded areas to prevent rust and premature corrosion.

Congratulations, the installation of your FLOWMASTER performance exhaust system is now complete!



NOTE: Flowmaster maintains a highly trained technical service department to answer your technical questions and provide additional product information.





Installation Diagram for
717871
CAT-BACK FFX DOS
FITS: 2015-2018 FORD F-150 TRUCKS
WITH 2.7L, 3.5L, 5.0L ENGINES

