



Installation Instructions  
**717867**  
2003-12 DODGE RAM 2500/3500,  
2006-08 1500 MEGA CAB  
5.7L ENGINE  
All Wheelbases

**OVERVIEW:**

1. Take a moment to read and understand these instructions before installing your Flowmaster performance system.

**NOTE:** Please inventory all parts now before continuing and if necessary, report any missing items to our tech line. This will avoid potentially stranding your vehicle until any missing replacement parts arrive.

ITM #	PART #	DESCRIPTION	QTY.
1	26332M	Inlet Pipe	1
2	71249-Z	FlowFX Muffler	1
3	26778M	Tailpipe Assembly	1
4	ST509B	Tip	1
N/A	PK1011	Hardware Pack includes:	1
5	392HA	Clamp Hanger Assembly	1
6	416HA	Front Pipe Clamp Hanger Assembly	1
7	MC300BS	3" Band Clamp	2
8	HW502	3/16" Hanger Keeper	1

**REMOVE STOCK EXHAUST SYSTEM:**

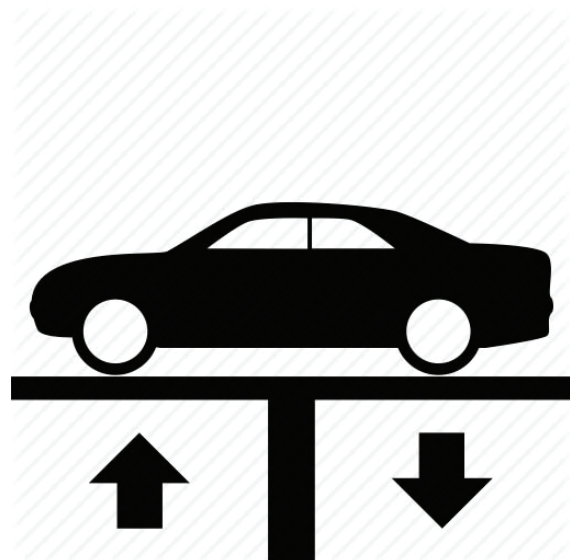
2. Raise vehicle up on a hoist or rack to working height. If you don't have access to a hoist or rack, support vehicle with jack stands.

**WARNING:**

Avoid serious burns! Allow your vehicle time to cool completely before touching any factory engine components.

**To ease preparation and installation of your new kit:**

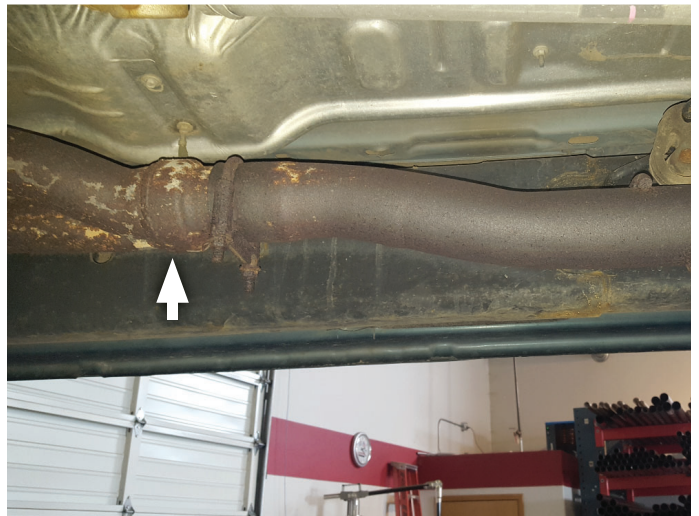
- Apply penetrating lubricant to mounts, bolts and clamps before you remove them.
- Use stands as necessary to support parts as you detach them from your vehicle and again as you install new parts.



3. Cut tailpipe at muffler exit. Disassemble hanger wires from isolators and remove tailpipe section from vehicle.



4. Support muffler and disassemble wire hangers from isolators. Remove clamp on slip connection behind cat. converter. Heat or cut slip connection to separate components, then remove muffler portion of exhaust from vehicle.



## INSTALL FLOWMASTER EXHAUST SYSTEM

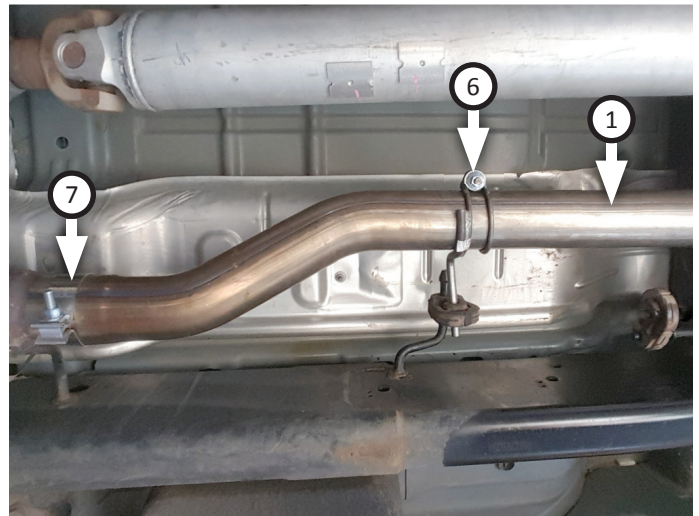
5. Remove nuts from Flowmaster clamps, apply anti-seize compound to bolts and re-install nuts.  
**NOTE:** The image in this step is intended for illustrative purposes only and may or may not accurately reflect components included in your kit.
6. Every slip fit connection in this kit must seat 3" deep except for muffler connections which must seat 2" deep. Find all slip fit components in your kit and mark them accordingly so your Flowmaster exhaust system fits properly onto your vehicle.



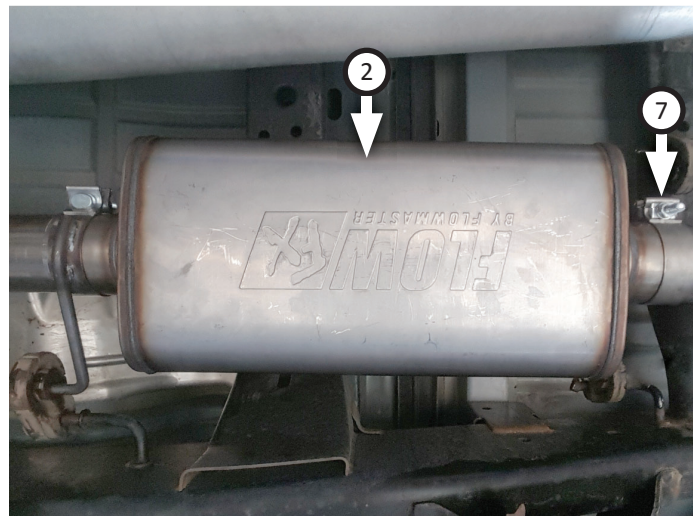
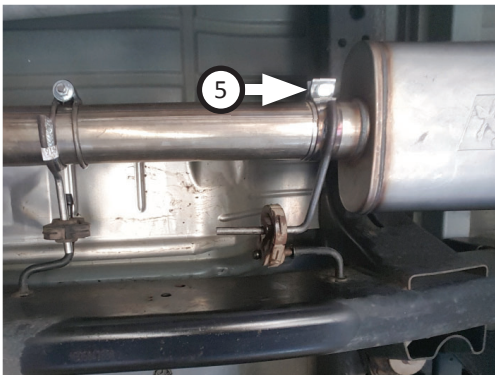
7. Find your vehicle in following application chart, then apply corresponding modifications to ensure your Flowmaster exhaust system installs properly.

MODEL YEAR	WHEELBASE	BODY TYPE	BED LENGTH	INLET PIPE MODIFICATION
2003-12	140"	Regular Cab	8'	Trim 29" from inlet rear
2003-09	140"	Quad Cab	6'4"	Trim 29" from inlet rear
2003-09	160"	Quad Cab	8"	Trim 9" from inlet rear
2006-12	160"	Mega Cab	6'4"	Trim 9" from inlet rear
2010-12	149"	Crew Cab	6'4"	Trim 20" from inlet rear
2010-12	169"	Crew Cab	8'	No modification necessary

8. Place **clamp (7)** onto **inlet pipe (1)** and connect it to front pipe, lining inlet pipe notch up to front pipe tab. Orient inlet pipe as shown, then tighten clamp just enough to secure connection.
9. Slide **front pipe clamp hanger (6)** onto inlet pipe and connect its hanger into factory isolator. Tighten front pipe clamp hanger, check position of inlet pipe then tighten front clamp again.

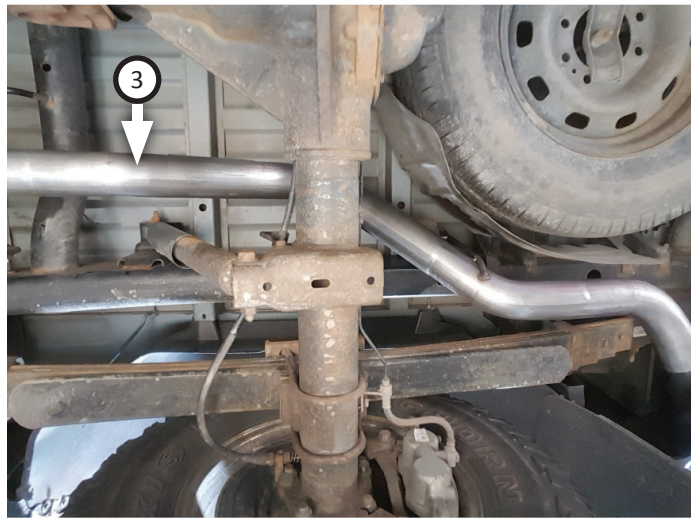


10. Place **clamp hanger (5)** onto **muffler (2)** then connect it to inlet pipe, inserting wire hanger into factory isolator. Tighten clamp hanger just enough to allow for adjustment. Place **clamp (7)** onto muffler outlet.

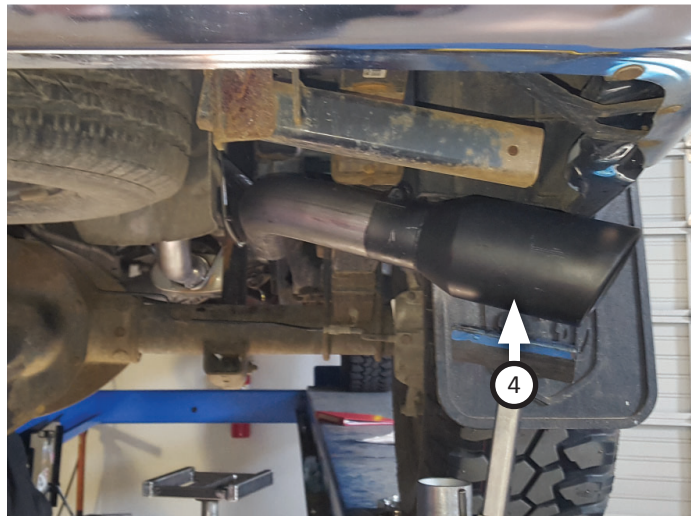




11. Route **tailpipe assembly (3)** over axle then connect it to muffler. Insert wire hangers into factory isolators then tighten clamp just enough to allow for adjustment.



12. Place **tip (4)** onto tailpipe assembly and tighten inlet. Rotate tailpipe and tip to desired distance from body or bumper, so angle cut on tips are properly positioned.
13. Adjust exhaust components for fit; maintaining  $\frac{1}{2}$ " clearance and compensating for suspension, travel and vibration then tighten all clamps. Finally, fit **hanger keeper (8)** onto sideways hanger.
14. Recommended: Secure slip-fit connections with a 1-inch tack weld then spray high-temp paint over each weld to prevent rust and premature corrosion.



Congratulations, the installation of your FLOWMASTER performance exhaust system is now complete!





Installation Diagram  
**717867**  
2003-12 DODGE RAM 2500/3500,  
2006-08 1500 MEGA CAB  
5.7L ENGINE  
All Wheelbases

