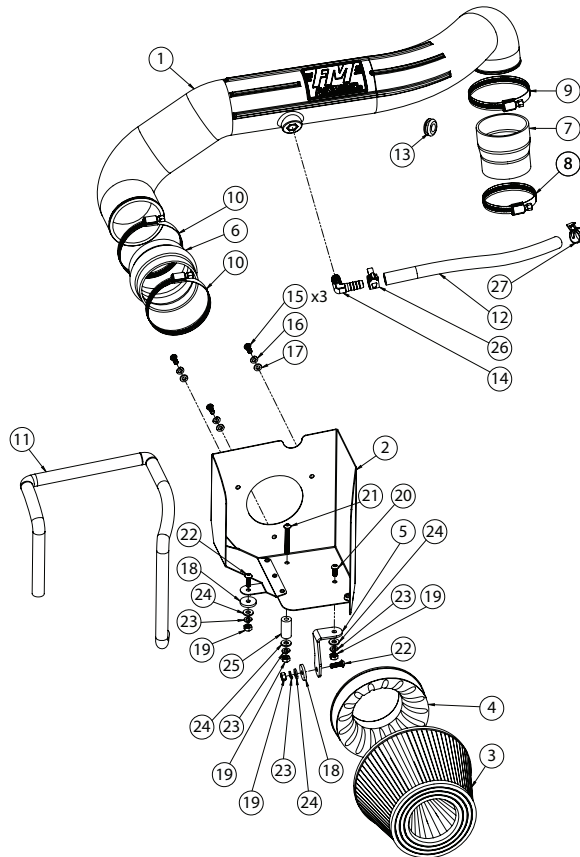




Installation Instructions
615189
 1997-06 JEEP WRANGLER TJ & LJ
 4.0L ENGINE



ITM #	PART #	DESCRIPTION	QTY.
1	AF2087	Molded Intake Tube	1
2	AF3082	Airbox	1
3	AF1012	Air Filter	1
4	AF6001	Air Filter Adapter	1
5	AF5102	Bracket 1	1
6	AF4019	Hump Rubber Coupler	1
7	AF4031	Rubber Coupler	1
8	MC250H	#44 Hose Clamp 2¼" - 3¼"	1
9	MC314H	#52 Hose Clamp 2⅜" - 3¾"	1
10	MC350H	#56 Hose Clamp 3⅞" - 4"	2
11	49000061	Airbox Trim Seal - 48" Long	1
12	49000064	½" Fuel Hose - 12" Long	1
N/A	PK1045	Hardware Package includes:	1
13	AF4008	Rubber Grommet	1

ITM #	PART #	DESCRIPTION	QTY.
14	AF4012	½" Barb ¼" 90° NPT Male	1
15	HW244	M6 X 1.0 X 16MM Screw	3
16	HW318	M6 Split Lock Washer	3
17	HW319	M6 Flat Washer	3
18	HW328	1" OD x .25" ID Rubber Washer	2
19	HW115	¼"-20 Nut	4
20	HW245	¼"-20 x ⅝" Screw	1
21	HW285	¼"-20 x 2" Screw	1
22	HW286	¼"-20 x ¾" Screw	2
23	HW322	¼" Split Lock Washer	4
24	HW333	¼" Flat Washer	4
25	HW556	⅝ OD x 1¼ Nylon Spacer	1
26	MC003P	½" Hose Pinch Clamp	1
27	MC004P	⅝" Hose Pinch Clamp	1

OVERVIEW:



1. Please take a moment to read and understand these instructions before installing your Flowmaster performance system.

NOTE: Please inventory all parts before starting the installation process and call our tech line to report any missing parts. This will help avoid potentially stranding your vehicle until any missing replacement parts arrive.

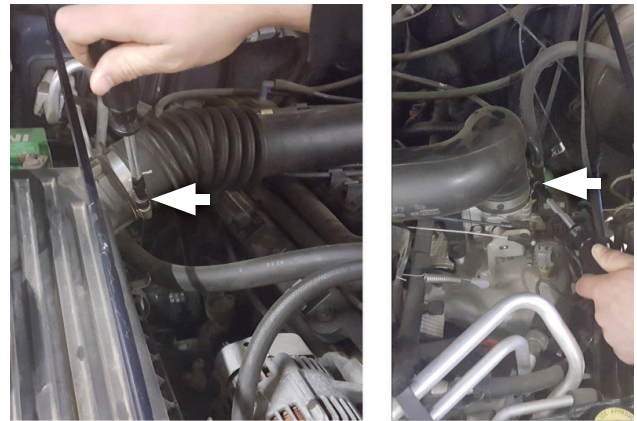
WARNING:

Avoid serious burns! Allow vehicle time to cool completely before handling any engine components.

REMOVE STOCK COMPONENTS:



2. Open hood then disconnect PCV hose from tube and remove it.



3. Loosen clamps at both ends of intake then remove it from vehicle.

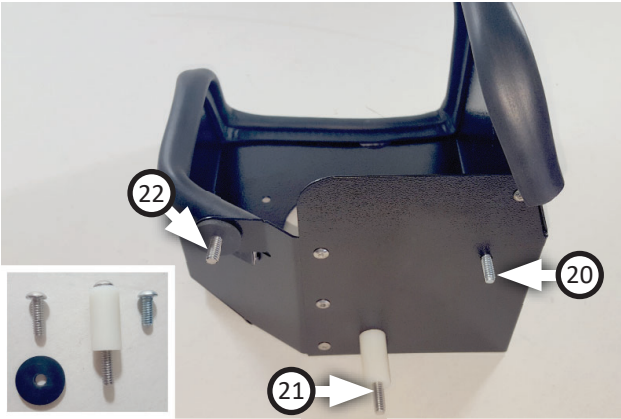


4. Unlatch and remove airbox cover, remove filter from airbox, then unbolt and remove airbox from vehicle.

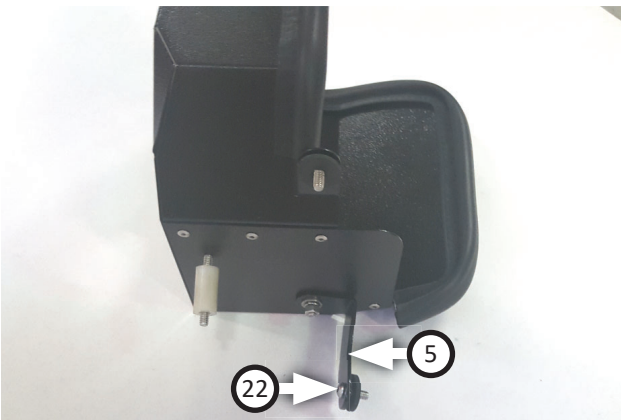
ASSEMBLE AND INSTALL FLOWMASTER PERFORMANCE AIR INTAKE SYSTEM:



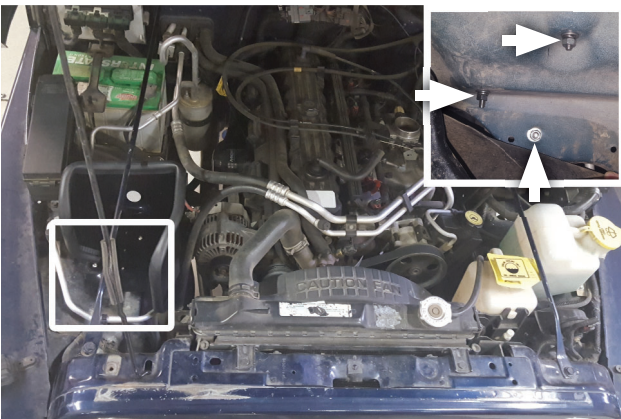
5. Starting at corner indicated, press **airbox gasket (11)** gradually around edge of **airbox (2)** then trim to fit as shown.



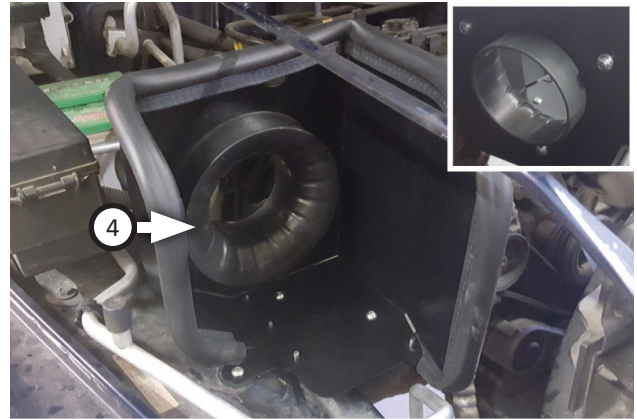
6. Insert (x2) screws (20, 21) through airbox and screw (22) through airbox arm. Set washer (18) and spacer (25) on screws as shown.



7. Insert screw (22) through bracket (5) and washer (18) then fasten assembly to airbox with flat washer (24), split lock washer (23) and nut (19).



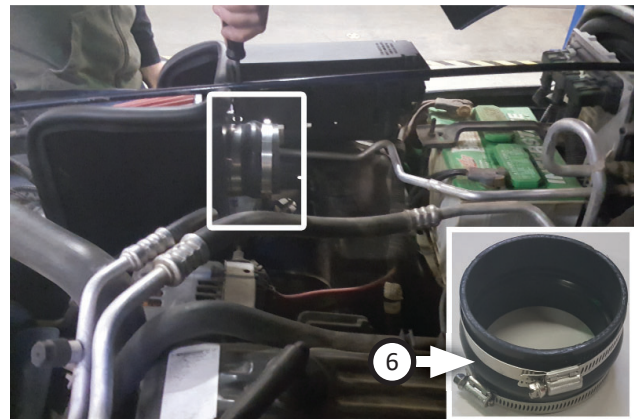
8. Set airbox into engine compartment, matching screws with holes in body. Reach through wheel well and fasten airbox with (x3 ea.) flat washers (24), split lock washers (23) and nuts (19).



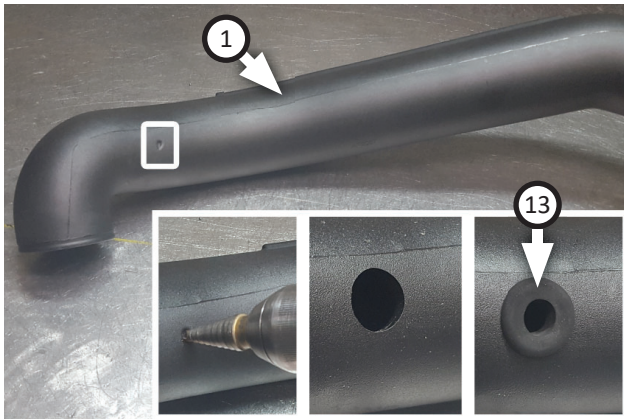
9. Install air filter adapter (4) into airbox with (x3 ea.) screws (15), split lock washers (16) and flat washers (17).



10. Remove grill support rod bolt to allow room for install. Set air filter (3) over air filter adapter in airbox then tighten screw clamp at its base then reinstall rod and bolt.



11. Place (x2) hose clamps (10) onto both sides of hump rubber coupler (6), fit it onto airbox assembly and tighten clamp as shown.



NOTE: Complete this step **only** if you own a 2005-06 model with air temp sensor in factory intake, otherwise skip to step 13.

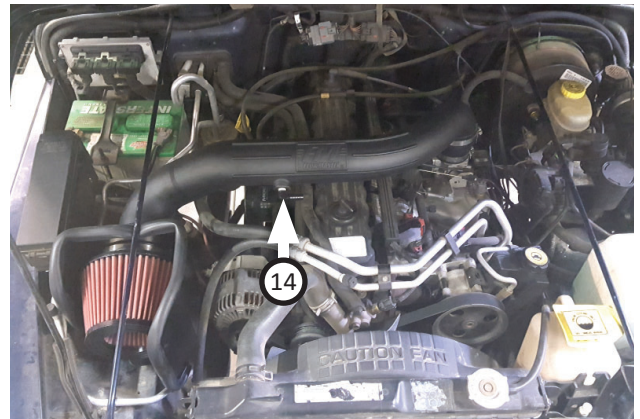
12. Drill out **intake tube (1)** dimple to a 0.83" hole then fit **grommet (13)** into it.



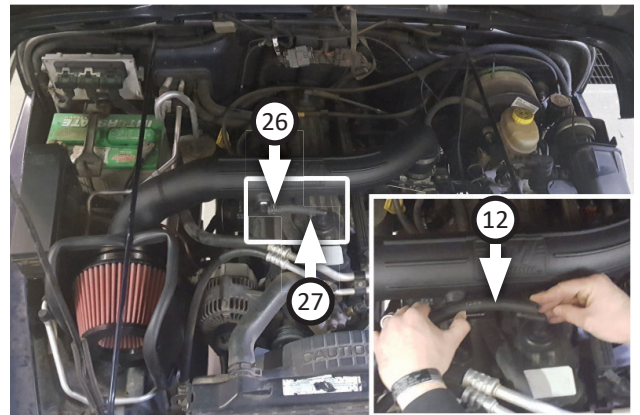
13. Place **hose clamp (8)** onto small end of **rubber coupler (7)** and **hose clamp (9)** onto larger remaining end of coupler. Place assembly onto intake tube as shown then tighten clamp.



14. Place intake assembly onto throttle body and adapter in engine compartment. Press couplers against stops then center tube. Tighten screw clamps completely.



15. Apply PTFE tape to **male barb (14)** then install it into intake tube, oriented as shown.



16. Turn barbs to face each other then trim to fit **fuel hose (12)** so it connects them. Install hose with **pinch clamps (26, 27)** to secure it as shown.



Congratulations, the installation of your Flowmaster Performance Intake system is now complete!

