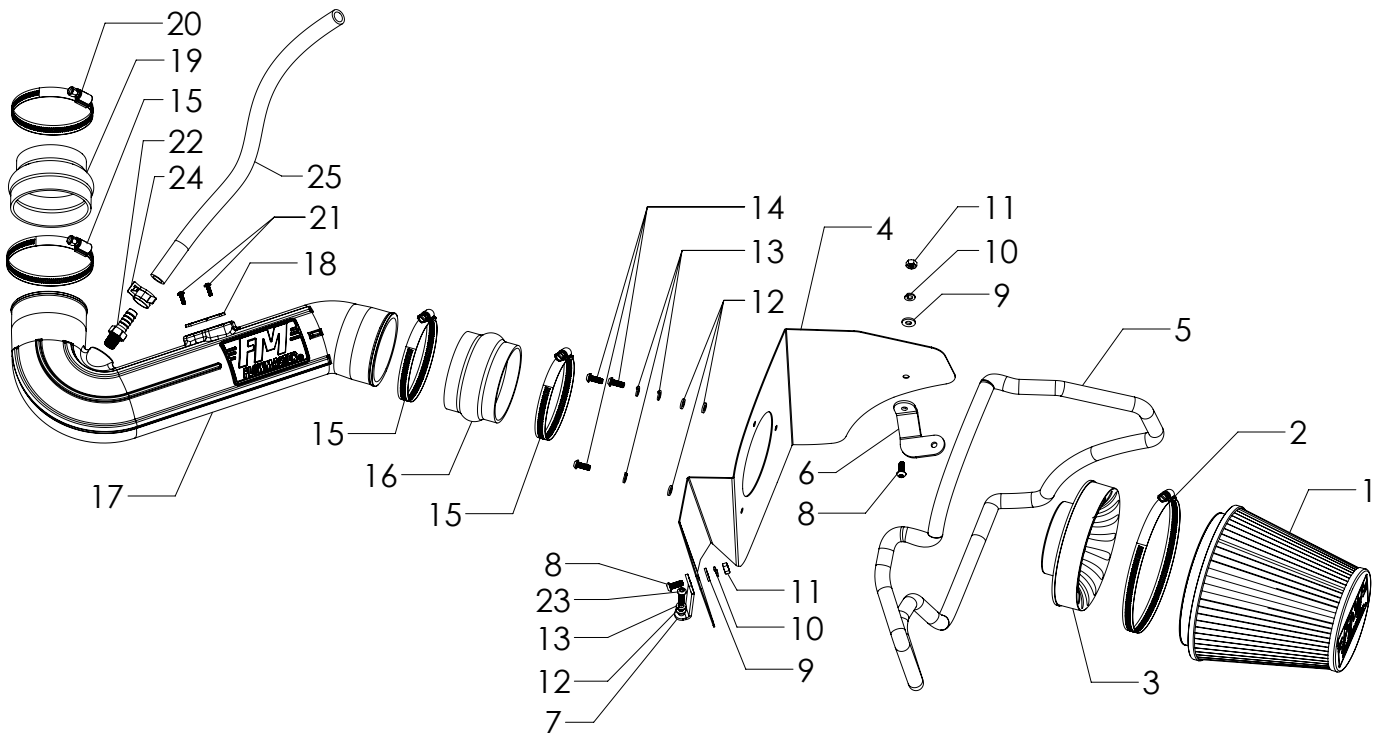




# Installation Instructions for: SYSTEM # 615172 2005-2009 FORD MUSTANG with 4.0L Engine

NOT LEGAL FOR SALE OR USE ON ANY POLLUTION-CONTROLLED MOTOR VEHICLE IN CALIFORNIA OR IN STATES THAT HAVE ADOPTED CALIFORNIA EMISSION PROCEDURES.



| ITEM NO. | PART NUMBER | DESCRIPTION                          | QTY. |
|----------|-------------|--------------------------------------|------|
| 1        | AF1002      | AIR FILTER, 7-1/2" x 6" DIA          | 1    |
| 2        |             | SCREW CLAMP, #104 (4-1/8" - 7")      | 1    |
| 3        | AF6001      | ADAPTER, AIR FILTER 3-1/2" x 6"      | 1    |
| 4        | AF3051      | HEAT SHIELD, 05-09 FORD MUSTANG 4.0L | 1    |
| 5        | 49000061    | GASKET, HEAT SHIELD                  | 60"  |
| 6        | AF5041      | BRACKET 1, 05-09 FORD MUSTANG 4.0L   | 1    |
| 7        | AF5042      | BRACKET 2, 05-09 FORD MUSTANG 4.0L   | 1    |
| 8        | HW245       | SCREW, 1/4"-20 x 5/8"                | 2    |
| 9        | HW320       | FLAT WASHER, 1/4"                    | 2    |
| 10       | HW322       | LOCK WASHER, 1/4"                    | 2    |
| 11       | HW115       | NUT, 1/4"-20                         | 2    |
| 12       | HW319       | FLAT WASHER, M6                      | 4    |
| 13       | HW318       | LOCK WASHER, M6                      | 4    |

| ITEM NO. | PART NUMBER | DESCRIPTION                                    | QTY. |
|----------|-------------|--|------|
| 14       | HW244       | SCREW, M6 x 1.0 x 16MM                         | 3    |
| 15       | MC350H      | SCREW CLAMP, #56 (3-1/16" - 4")                | 3    |
| 16       | AF4019      | COUPLER, FLEX 3-1/2" I.D. x 2-1/2" L           | 1    |
| 17       | AF2051      | INTAKE TUBE, 05-09 FORD MUSTANG 4.0L           | 1    |
| 18       | GA139       | GASKET, MAF SENSOR                             | 1    |
| 19       | AF4057      | COUPLER, FLEX 3-1/2" I.D. - 3" I.D. x 2-1/2" L | 1    |
| 20       | MC314H      | SCREW CLAMP, #52 (2-13/16" - 3-3/4")           | 1    |
| 21       | HW248       | SCREW, M4 x 0.7 x 12MM                         | 2    |
| 22       | AF4011      | FITTING, STRAIGHT 1/2" BARB TO 1/4" NPT MALE   | 1    |
| 23       | HW263       | SCREW, M6 x 1.0 x 25MM                         | 1    |
| 24       | MC003P      | PINCH CLAMP, 1/2" HOSE                         | 1    |
| 25       | 49000064    | HOSE, 1/2" I.D.                                | 30"  |

## REVIEW THE INSTRUCTIONS AND VERIFY THE KIT CONTENTS:

1. Please take a moment to read and understand these instructions before installing your Flowmaster cold air intake kit.



2. Use the parts drawing and list (front page) to verify your kit's contents.

In the unlikely event that any parts are missing, please contact Flowmaster Technical Support for replacements.

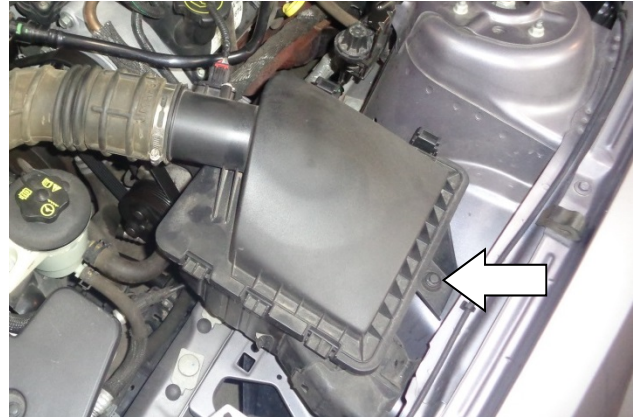
To simplify assembly and avoid cross-threading fasteners, identify and separate the 1/4-20 screws, (item 8) (used with nuts (11)), and the M6 screws (14) (used with filter adapter (3)).

## REMOVE THE FACTORY AIR INTAKE SYSTEM:

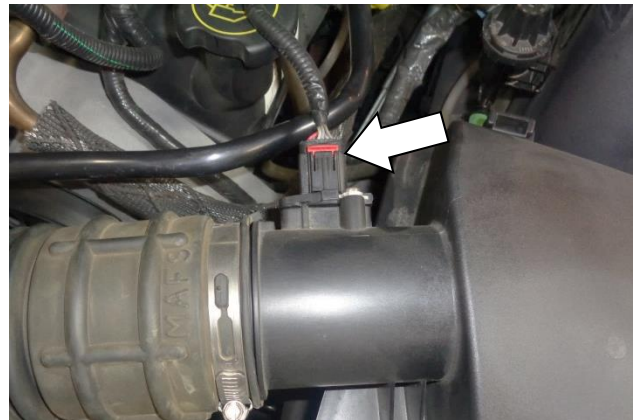
### NOTES

- We highly recommend that you retain all factory air intake system parts.
- Please refer to vehicle manufacturer's recommendations regarding removal of factory components.
- Disconnecting the negative battery cable erases pre-programmed electronic memories. Write down all memory settings before disconnecting the negative battery cable. Some radios will require an anti-theft code to be entered after the battery is reconnected. The anti-theft code is typically supplied with your owner's manual. In the event your vehicle's anti-theft code cannot be recovered, contact an authorized dealership to obtain your vehicle's anti-theft code.

3. Turn off the vehicle's ignition and disconnect the negative battery cable.



4. Remove the airbox mount bolt and retain for use at Step 22.



5. Disconnect the mass airflow (MAF) sensor plug by pulling the locking tab away from the sensor until it stops, then squeezing the plug and pulling it straight off the sensor.



6. Loosen the screw clamp securing the intake duct to the throttle body.



7. Disconnect the PCV line from the intake duct by releasing the locking tab and pulling the line straight off.



8. Disconnect the PCV line at the engine end and remove it from the vehicle.



9. Separate the intake duct from the throttle body, then remove the assembled duct and airbox from the vehicle.

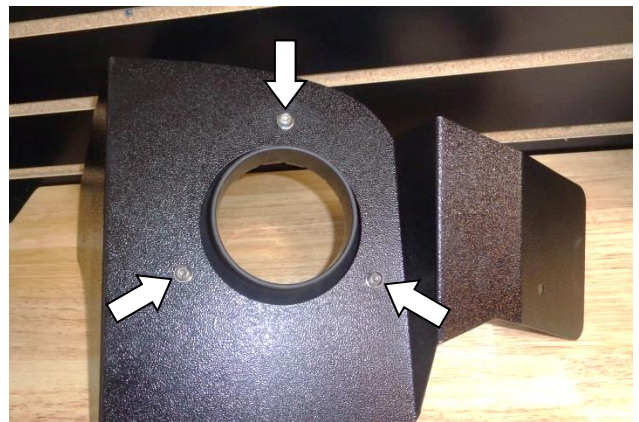


10. Remove the MAF sensor from the airbox, then remove the factory gasket from the sensor.  
**CAUTION: The sensor is delicate!** Handle it with care, and put it in a safe place until reinstallation.



11. Remove the fan shroud bolt (top driver side). **The heat shield will attach here at Step 22.**

### ASSEMBLE AND INSTALL YOUR FLOWMASTER COLD AIR INTAKE SYSTEM:



12. Assemble the air filter adapter (3) to the heat shield (4) using the M6 screws (14), lock washers (13) and flat washers (12).



13. Starting at the bottom edge below the filter adapter, firmly press the gasket (5) onto the heat shield, gradually working your way around. When you return to the starting point, use metal-cutting shears to trim the gasket to length.



14. Attach bracket (6) to the heat shield using a 1/4-20 x 5/8" screw (8) (against the bracket), and a flat washer (9), lock washer (10) and nut (11) (against the heat shield). **Do not tighten the bracket fasteners at this time.**



15. Attach bracket (7) to the heat shield using a 1/4-20 x 5/8" screw (8) (against the bracket), and a flat washer (9), lock washer (10) and nut (11) (against the heat shield). **Do not tighten the bracket fasteners at this time.**



16. Slip the MAF sensor gasket (18) over the sensor, ensuring correct orientation. Then install the sensor in the intake tube (17), using the M4 screws (21).



17. Apply 2 wraps of nylon thread tape to the threads of the 1/2" barbed fitting (22), and install it in the intake tube.



18. Install two large screw clamps (15) on the large coupler (16). Install the coupler on the filter end of the tube. Snug (but do not yet tighten) just the clamp on the tube.



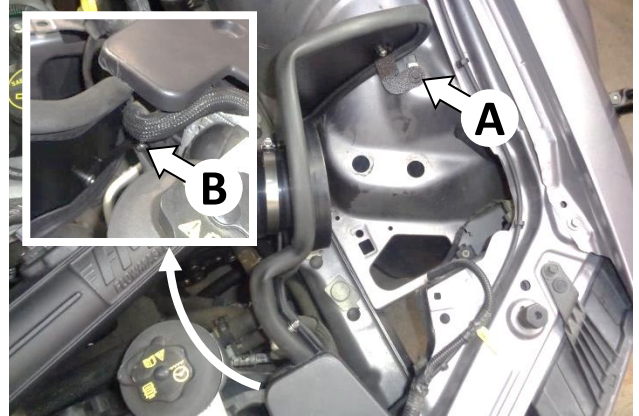
19. Install the small screw clamp (20) and large screw clamp (15) on the appropriate ends of the reducing coupler (19). Install the large end of the coupler on the throttle body end of the tube. Snug (but do not yet tighten) just the clamp on the tube.



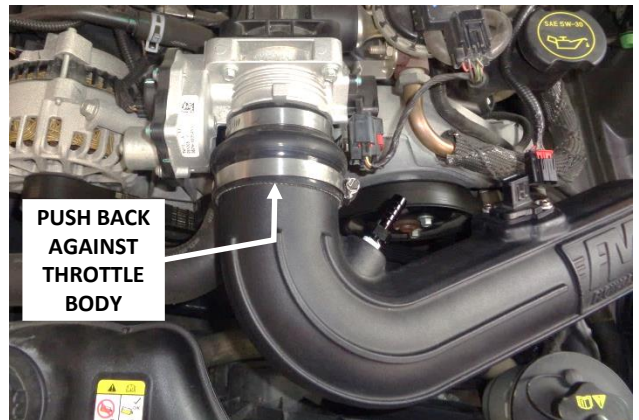
20. Assemble the intake tube and heat shield. Snug (but do not yet tighten) the clamp on the filter adapter.



21. Place the assembled tube and heat shield in the vehicle. Slip the reducing coupler onto the throttle body, but do not yet tighten any screw clamps.



22. At the rear bracket (A), install (but don't tighten) the airbox mount bolt removed at Step 4. At the front bracket (B), install and tighten the M6 screw (23), lock washer (13) and flat washer (12). Then tighten the stock bolt at the rear bracket. Finally, tighten the fasteners holding both brackets to the heat shield.



23. Push the reducing coupler back against the throttle body and tighten only the throttle body clamp.



24. Push the large coupler flush up against the heat shield. Tighten only the clamp on the filter adapter.



25. Center the intake tube between the couplers, and tighten the two clamps on the intake tube.



26. Route one end of the 1/2" hose (25) under the spark plug wires and push it onto the PCV port at the rear of the engine.



27. The hose should neither kink at the bend (A) nor chafe against the spark plug wires. Cut the hose to length and secure it to the barbed fitting (B) with the pinch clamp (24).



28. Reconnect the MAF sensor plug to the sensor, close the locking tab, and verify the connection is secure.



29. Install the clamp (2) on the air filter (1), then install the filter on the filter adapter and tighten the clamp.



**Congratulations! The installation of your new Flowmaster cold air intake kit is now complete!**