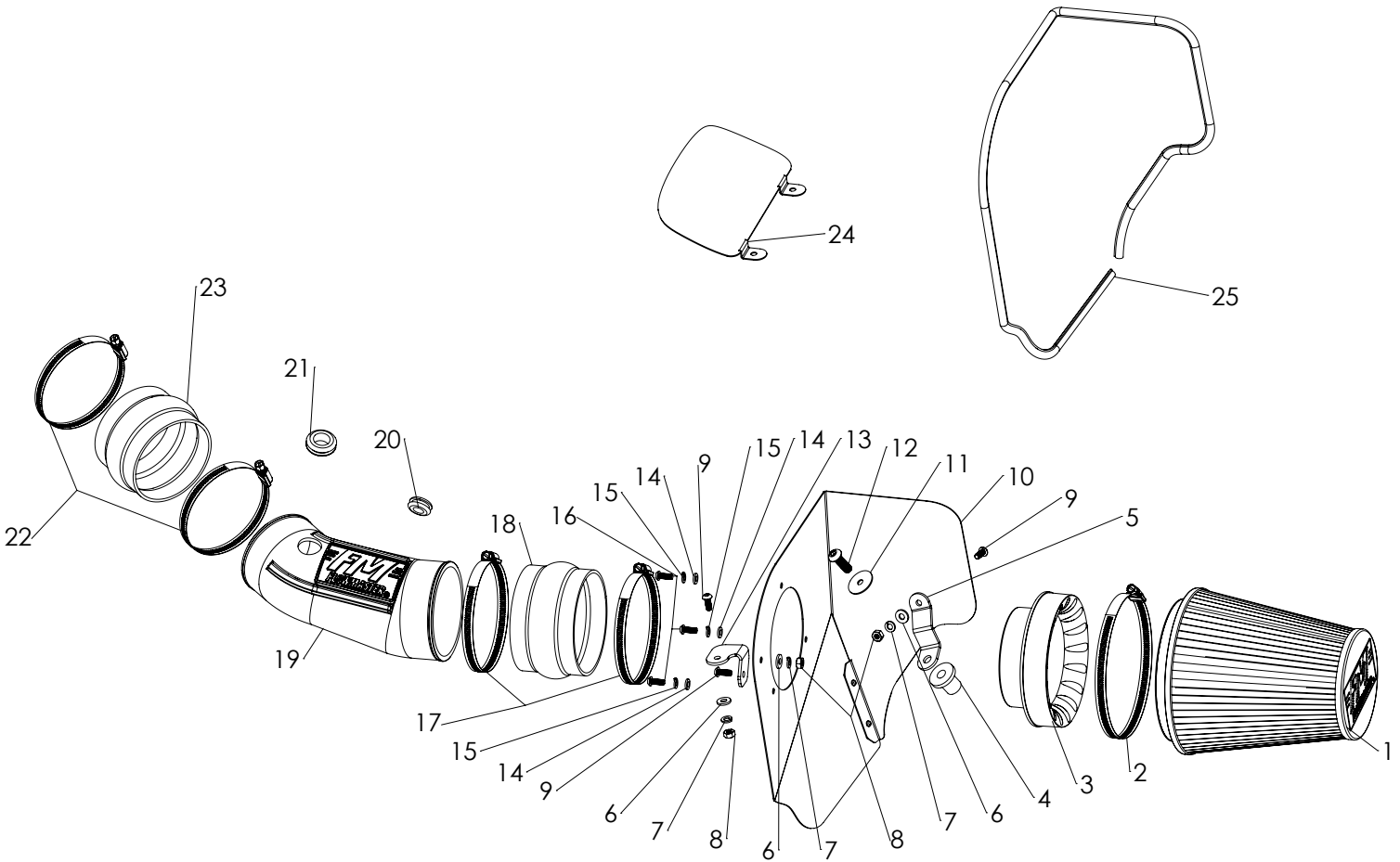




Installation Instructions for:  
**SYSTEM #615139**  
 2017 Challenger/Charger  
 Hellcat - 6.2L Engine



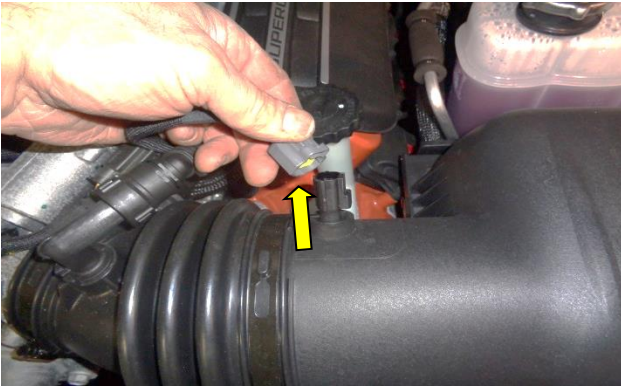
ITEM NO.	PART NUMBER	DESCRIPTION	QTY.
1	AF1001	FILTER, AIR 8.625" HIGH, Ø6" FLANGE	1
2		#104 HOSE CLAMP Ø4.125 TO 7"	1
3	AF6003	4.50" TO 6.00" AIR FILTER ADAPTER	1
4	HW119	3/4" WELL NUT	1
5	AF5017	BRACKET 2, 2017, DODGE CARS, 6.2L	1
6	HW320	1/4" FLAT WASHER SAE SS	3
7	HW322	1/4" SPLIT LOCK WASHER SS	3
8	HW115	1/4"-20 NUT SS	3
9	HW245	1/4"-20 X 5/8" BTNHD SS	3
10	AF3008	AIRBOX-COMPLETE, 2017, DODGE CARS, 6.2L	1
11	HW326	FLAT WASHER, .281" I.D. X 1.25" O.D. 18-8 SS	1
12	HW250	3/8"-16 X 1.125" BTNHD SS	1
13	AF5016	BRACKET 1, 2017, DODGE CARS, 6.2L	1

ITEM NO.	PART NUMBER	DESCRIPTION	QTY.
14	HW319	M6 FLAT WASHER SS	3
15	HW318	M6 SPLIT LOCK WASHER SS	3
16	HW244	M6 X 1.0 X 16MM BTNHD SS	3
17	MC450H	#72 HOSE CLAMP Ø3 TO 5"	2
18	AF4021	4.5"ID X 3"L RUBBER COUPLER, HUMP	1
19	AF2008	2017 DODGE CARS, 6.2L INTAKE TUBE	1
20	AF4008	GROMMET, RUBBER 1.06"OD X 1/2"ID X 7/16"THK	1
21	AF4045	RUBBER GROMMET 1.375" OD X 0.75" ID X 0.188" THK	1
22	MC400H	#64 HOSE CLAMP Ø3 9/16 TO 4.5"	2
23	AF4005	4"ID X 3"L RUBBER COUPLER, HUMP	1
24	AF5018	18 GA VENT BLOCKING PLATE, CHALL/CHRG 6.2L	1
25	49000061	PUSH ON VINYL AIR BOX TRIM SEAL	1

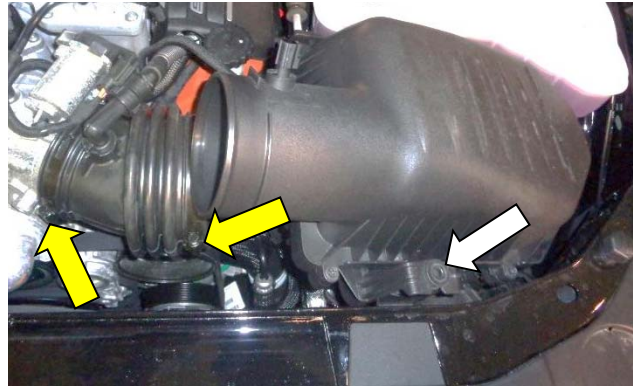
## Removal:

Note: Please refer to vehicle manufacturer's recommendations regarding removal of components.

1. Turn off the ignition and disconnect the negative battery cable. NOTE: Disconnecting the negative battery cable erases pre-programmed electronic memories. Write down all memory settings before disconnecting the negative battery cable. Some radios will require an anti-theft code to be entered after the battery is reconnected. The anti-theft code is typically supplied with your owner's manual. In the event your vehicles' anti-theft code cannot be recovered, contact an authorized dealership to obtain your vehicles anti-theft code.



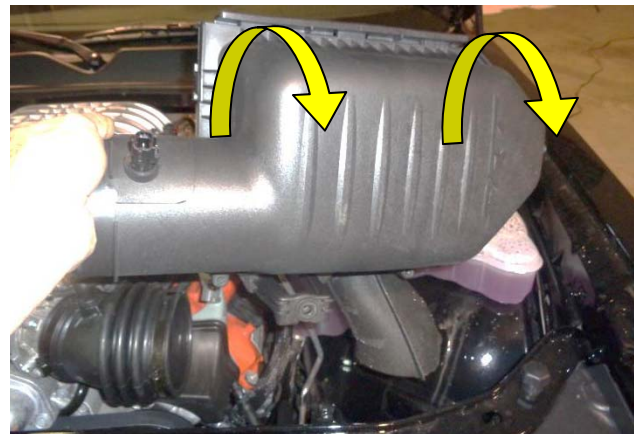
2. Carefully disconnect the air temperature sensor connector by depressing the rocking tab on the back of the plug and pulling straight off.



4. Loosen the hose clamps → which secure the factory intake tube to the throttle body and air-box. Detach from the air-box by compressing the intake-tube bellows towards the engine. Remove the bolt ⇨ for the factory air-box on the front cross frame.



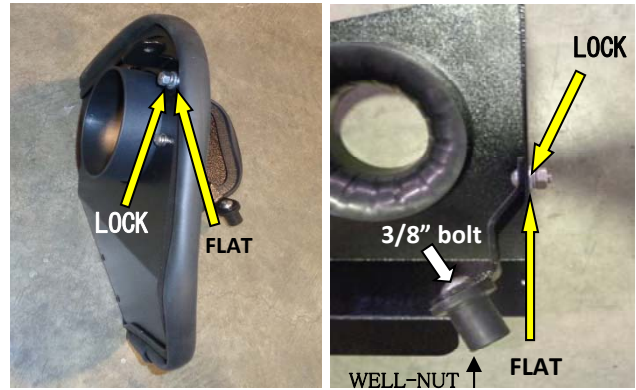
3. Disconnect the crank-case vent hose fitting from the stock intake tube by gently pulling straight up in an orbital motion. To make removal easier, spray a lubricant into the rubber connection point to act as a release agent for the fitting barbs.



5. Remove the factory air-box assembly by lifting up and rolling forward simultaneously. Then, remove the factory intake tube from the throttle body. NOTE: We highly recommend that customers retain their factory air intake system.



6. Remove the air temperature sensor from the factory air-box by gently lifting the locking tab outward with a flat screwdriver and rotating counter-clockwise as shown.



9. Loosely attach the two provided metal brackets to the heat shield using the  $\frac{1}{4}$ " cap screws/nuts and corresponding flat and lock washers  $\rightarrow$  and the well-nut with corresponding  $\frac{3}{8}$ " bolt  $\leftrightarrow$  as shown.



7. Remove the o-ring from the stock air temperature sensor and lubricate the o-ring area with a small amount of sensor-safe silicone grease or equivalent lubricant. Retain sensor for reinstallation later.



10. Install the air filter adapter using the 6mm screws and washers as shown. Install the rubber trim seal as shown by pressing fully into the groove starting from one end. Trim the final length with metal shears.

**Assembly:** Assemble the FM Cold Air Intake using the drawing on the front page for reference.



8. Begin the assembly process of the FM system by organizing the contents of the kit by thread and type. This will aid in the simplicity of this process and lessen the chance of misplaced parts.

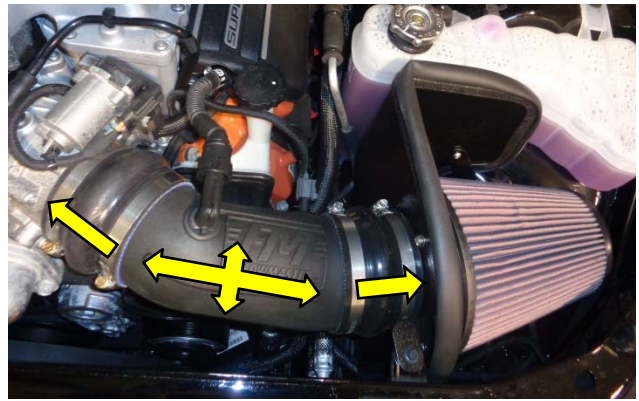


11. Assemble the FM intake tube as shown using the two provided rubber grommets. Install the stock air-temperature sensor into the small grommet as shown by pressing in and twisting clockwise.

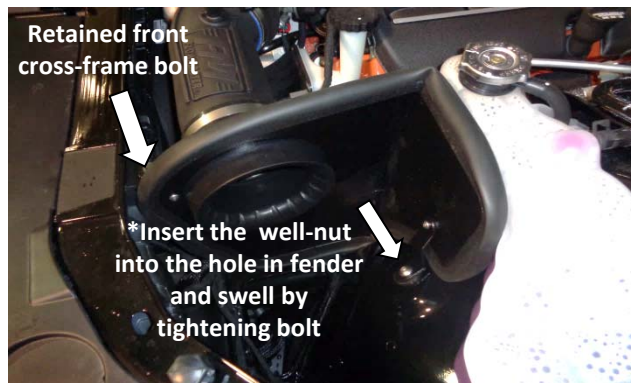




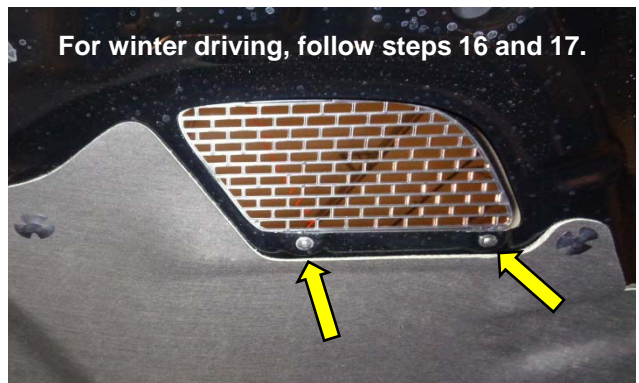
12. Loosely assemble the provided silicone-rubber couplers and corresponding hose clamps onto the FM intake tube as shown.



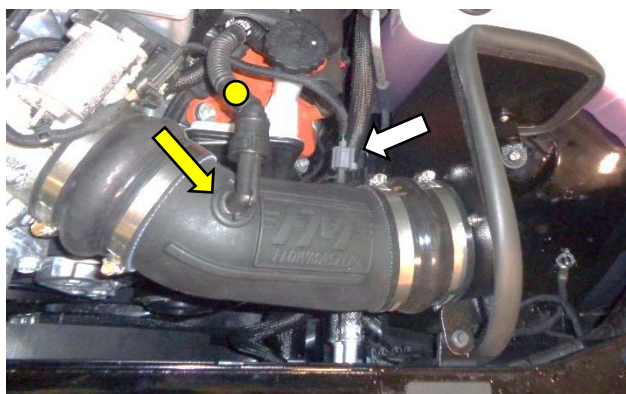
15. Install the FM air filter with the provided clamp. Adjust the FM intake tube endplay/rotation  $\leftrightarrow$  to center between the fully seated rubber couplers  $\rightarrow$ . Align and tighten all hose clamps for a satisfactory fit.



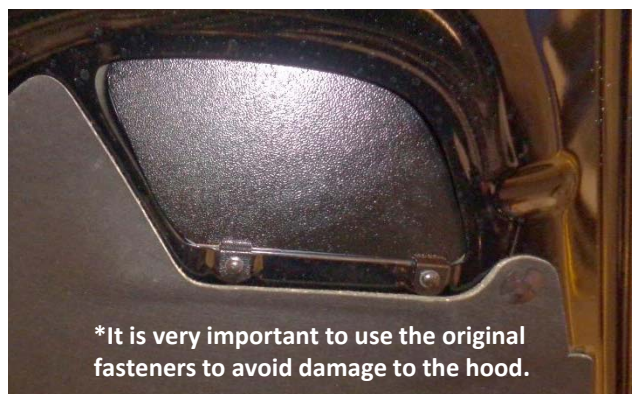
13. Combine the FM intake tube and the FM air-box assembly and install into the vehicle as shown. Tighten all fasteners including the well-nut\*. Leave the intake tube hose clamps loose for adjustment.



16. Install the provided drivers-side hood vent cover by removing the two fasteners  $\rightarrow$  securing the stock hood screen. Keep the screen in place for reuse.



14. Insert the crankcase tube fitting  $\rightarrow$  into the large grommet on the FM intake tube (the vent tube should be relaxed as shown  $\circ$  ) Next, reconnect the air-temperature sensor plug  $\Rightarrow$  .



17. Using the original fasteners\*, install the vent cover over the screen as shown and tighten securely. Reattach the negative ground clamp to the battery, recheck all connections, fasteners and fitment. Enjoy!