



INSTALLATION INSTRUCTIONS

PRODUCT: POWERFLO LIFT PUMP [TANK REMOVAL]

FITMENT: 2005–2018 Dodge/Ram with Cummins 5.9/6.7

KIT P/N: FPE-34560 (MY2005-2009), FPE-34561 (MY2010),
FPE-34562 (MY2011-2018)

ESTIMATED INSTALLATION TIME: 1-2 Hours

TOOLS REQUIRED: 1/4" drive ratchet, 1/4" drive 8mm socket, 1/4" drive 9/32 socket, 1/4" drive 10mm socket, 1/2" drive impact or ratchet, 15mm 1/2" drive swivel or box end wrench, 1/2" drive 16mm deep socket, large hammer, large pry bar, punch and/or chisel.

KIT CONTENTS:

Item	Description
1	PowerFlo lift pump with float arm
2	Wiring harness with zip-ties
3	O-ring
4	Warranty registration card



WARNINGS:

- Use of this product may void or nullify the vehicle’s factory warranty.
- User understands that motorsports are dangerous, and that installation of this product may subsequently require special driving skills or techniques to safely operate the vehicle.
- User assumes sole responsibility for the safe & proper use of the vehicle at all times.
- The purchaser and end user releases, indemnifies, discharges, and holds harmless Fleece Performance Engineering, Inc. from any and all claims, damages, causes of action, injuries, or expenses resulting from or relating to the use or installation of this product that is in violation of the terms and conditions on this page, the product disclaimer, and/or the product installation instructions. Fleece Performance Engineering, Inc. will not be liable for any direct, indirect, consequential, exemplary, punitive, statutory, or incidental damages or fines cause by the use or installation of this product.
- Fuel Lines must be clean before installation.

INSTALLATION INSTRUCTIONS

INSTALLATION PROCEDURE:

STEP 1: Disconnect batteries and block the tires.

STEP 2: Remove the rear drivers side inner fender retained with a quantity of 11 - 8mm screws. One fastener in the front of the wheel well is hidden behind the fender flare, if equipped. Pull back the fender flare to expose the fastener.



STEP 3: Remove the rear driveshaft. On short wheelbase trucks the only remove the 4- 15mm bolts on the yoke of the rear end. On long wheel base trucks, the carrier bearing mount must be removed as well.



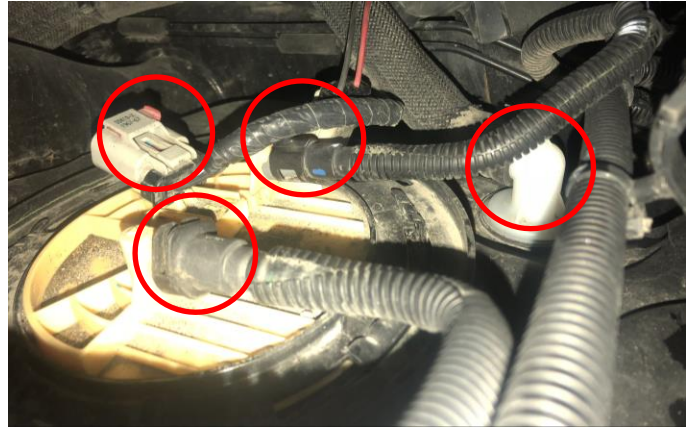
STEP 4: Support the fuel tank with a lift jack. Loosen the front and rear fuel tank straps using a 16mm deep socket. Remove the front strap first, and leave the rear strap loose and attached at this time. Lowering the front of the fuel tank downward will allow access to unplug the sending unit and remove the fuel line quick disconnects.

INSTALLATION INSTRUCTIONS

STEP 5: Release the retaining clip securing the DEF lines located at the front of the fuel tank if so equipped (2013 MY+)



STEP 6: Remove the fuel line quick disconnects. Disconnect the sending unit connector.



STEP 7: Remove the tank vent located toward the rear of the fuel tank. The vent line is attached to a 3/8" barb fitting.



INSTALLATION INSTRUCTIONS

STEP 8: Remove the filler neck hose at the tank with a 9/32" socket to loosen the clamp. Access the clamp through the fender well. Remove the filler neck hose from the fuel tank. Remove the rear fuel tank strap and lower the complete fuel tank to the ground. Move the tank into an area where you clear access the tank.



STEP 9: Clean the area around the sending unit with pressurized air to remove debris. Wipe the area around the pump with a clean rag.
NOTE: Mark the orientation of the sending unit relative to the tank to ensure proper orientation of the PowerFlo pump during installation.

Using a hammer and punch, rotate the retaining ring counter clockwise. Remove the retaining ring that holds the OEM pump into the tank and remove the sending unit from the tank by lifting it upward. Remove the sealing o-ring from the tank.



STEP 10: Clean the tank sealing surface and place your new o-ring supplied in the kit for the PowerFlo lift pump onto the top of the tank.

STEP 11: Install the fuel level float arm onto the PowerFlo lift pump by gently clipping the arm into the fuel level sensor. Slightly compress the sending unit assembly downward to simulate it's installed position in the fuel tank. With the top slightly depressed, move the float arm up and down, ensure that the arm does not contact the pump wires in the full up or full down position.



INSTALLATION INSTRUCTIONS

STEP 12: Install the PowerFlo pump assembly into the tank and reinstall the retaining ring using your hammer and punch or chisel by rotating it clockwise to the fully engaged position. Ensure proper orientation of the pump and fittings matches the orientation of the original pump.

NOTE: Use caution when installing the pump to not damage the float arm.



STEP 13: With the fuel tank out of the truck, neatly route the wiring harness from the driver side battery compartment to the OEM pump connection. Route the harness in a manner that it will not interfere with any moving parts and retain it with zip ties along the main electrical harness of the truck routed to the rear of the truck.

NOTE: The Fleece supplied wiring harness is required to power the secondary pump and handle the additional current draw.

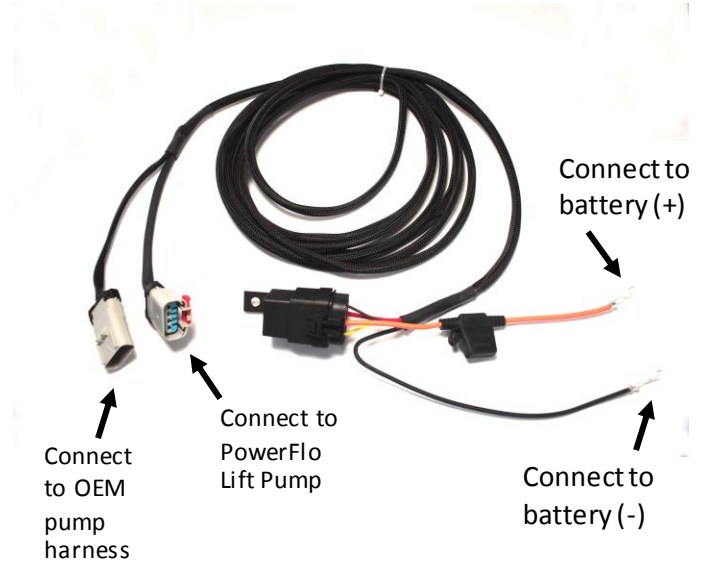


STEP 13: Reinstall the fuel tank, leaving the front hanger off and loosely installing the rear hanger first to provide better access to the electrical and fuel connections on the top of the fuel tank. Make the proper connections for the fuel lines, vent, fill tube, and electrical connection. Make sure the quick disconnect fuel lines are fully seated with retaining clips in place. When the quick disconnect fitting is fully seated you will not be able to pull it back off the pump fitting without releasing the retaining clip.



INSTALLATION INSTRUCTIONS

STEP 14: Connect the supplied electrical wiring harness to the OEM harness and PowerFlo lift pump.



STEP 15: Reinstall your front fuel tank strap. Retain the DEF lines back into the original retention clip. Tighten both tank straps back down.

STEP 16: Reinstall the rear driveshaft and carrier bearing mount if removed.
NOTE: Use a red loctite on the bolts and properly torque to factory specifications.

STEP 17: Reinstall the inner fender well, install the hidden screw in the front, located behind the fender flare first, then reinstall the remaining fasteners.

STEP 18: Reinstall the battery connections. The fused lead from the supplied harness should be connected to the positive (+) battery terminal and the black lead will should be connected to the negative (-) battery terminal.

INSTALLATION INSTRUCTIONS

PRODUCT: POWERFLO LIFT PUMP [BED REMOVAL]

FITMENT: 2005–2018 Dodge/Ram with Cummins 5.9/6.7

KIT P/N: FPE-34560 (MY2005-2009), FPE-34561 (MY2010),
FPE-34562 (MY2011-2018)

ESTIMATED INSTALLATION TIME: 2-3 Hours

TOOLS REQUIRED: 1/4" drive ratchet, 1/4" drive 8mm socket, 1/4" drive 9/32 socket, 1/4" drive 10mm socket, 1/2" drive impact or ratchet, 15mm 1/2" drive swivel or box end wrench, 1/2" drive 16mm deep socket, large hammer, large pry bar, punch and/or chisel.

KIT CONTENTS:

Item	Description
1	PowerFlo lift pump with float arm
2	Wiring harness with zip-ties
3	O-ring
4	Warranty registration card



WARNINGS:

- Use of this product may void or nullify the vehicle's factory warranty.
- User understands that motorsports are dangerous, and that installation of this product may subsequently require special driving skills or techniques to safely operate the vehicle.
- User assumes sole responsibility for the safe & proper use of the vehicle at all times.
- The purchaser and end user releases, indemnifies, discharges, and holds harmless Fleece Performance Engineering, Inc. from any and all claims, damages, causes of action, injuries, or expenses resulting from or relating to the use or installation of this product that is in violation of the terms and conditions on this page, the product disclaimer, and/or the product installation instructions. Fleece Performance Engineering, Inc. will not be liable for any direct, indirect, consequential, exemplary, punitive, statutory, or incidental damages or fines cause by the use or installation of this product.
- Fuel Lines must be clean before installation.

INSTALLATION INSTRUCTIONS

INSTALLATION PROCEDURE:

STEP 1: Disconnect batteries and block the tires.

STEP 2: Remove the tailgate, rear bumper, and taillights from the vehicle.



STEP 3: Remove the bolts that retain the bed of the truck to the frame. For the short bed model, there will be 6 fasteners. For the long bed model, there will be 8 fasteners.

NOTE: Remove any other components that may be attached to the bed at this time, this includes gooseneck chain perch, electrical trailer harnessing, ground straps, etc.



STEP 4: Disconnect the fuel filler neck from the bed.

STEP 5: Ensure any remaining items connected to the bed are removed and remove the bed from the frame.



INSTALLATION INSTRUCTIONS

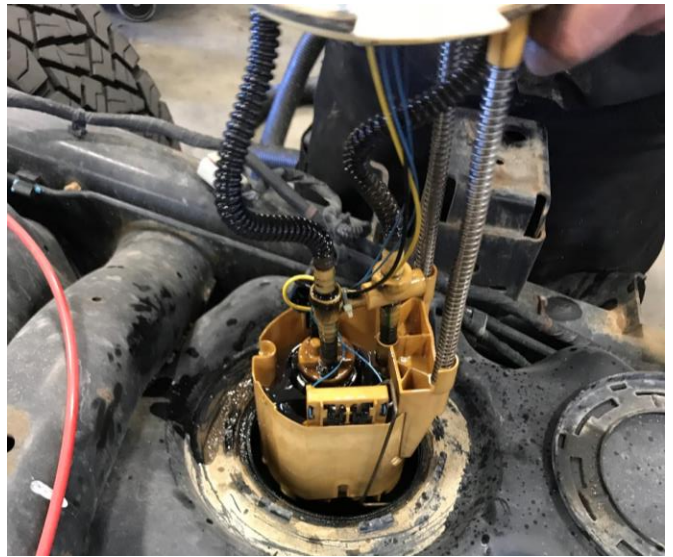
STEP 6: Clean any debris from the top of the factory fuel pump. Use compressed air or a vacuum to remove all debris.

STEP 7: Remove the fuel supply and return lines by releasing the retaining clip. Remove the electrical connector.

NOTE: Mark the orientation of the sending unit flange tab relative to the tank to ensure proper orientation of the PowerFlo pump during installation.



STEP 8: Using a hammer and punch, rotate the locking ring counter clockwise. Remove the factory sending unit and pump assembly by lifting it upward. Remove the sealing o-ring from the tank.

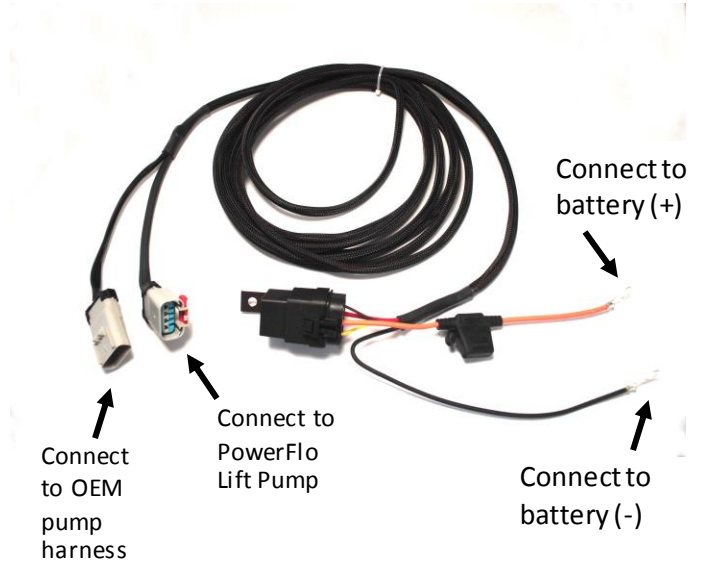


STEP 10: Clean the tank sealing surface and place your new o-ring supplied in the kit for the PowerFlo lift pump onto the top of the tank.

STEP 11: Connect the PowerFlo wiring harness to the factory harness.



INSTALLATION INSTRUCTIONS



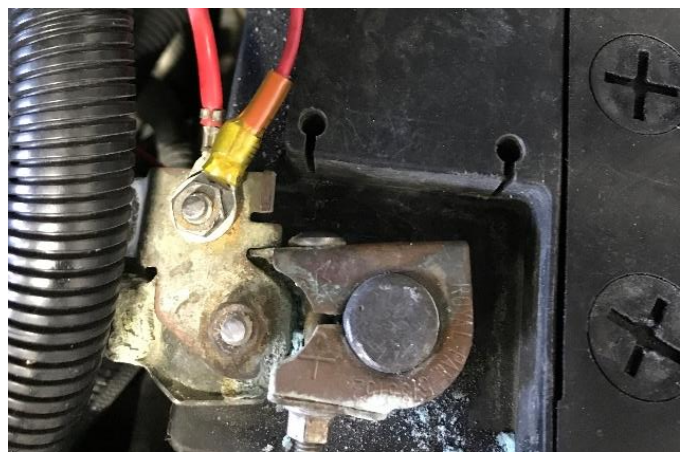
STEP 12: Neatly route the wiring harness from the driver side battery compartment to the OEM pump connection. Route the harness in a manner that it will not interfere with any moving parts and retain it with zip ties along the main electrical harness of the truck routed to the rear of the truck.

NOTE: The Fleece supplied wiring harness is required to power the secondary pump and handle the additional current draw.



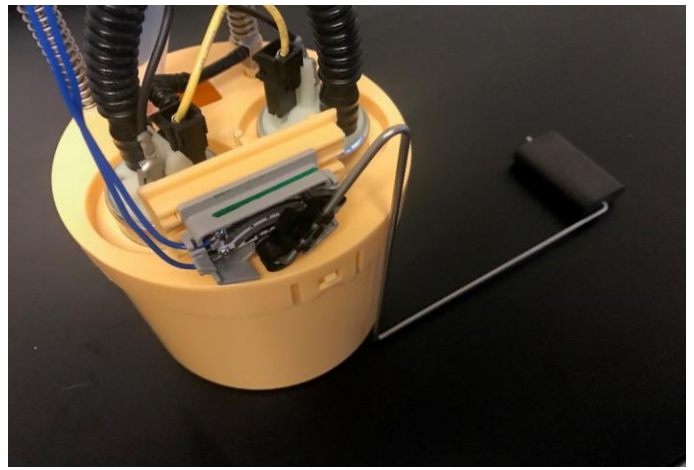
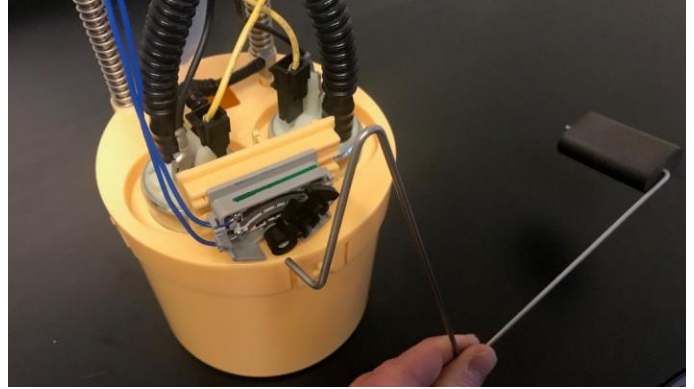
STEP 13: Connect the wiring harness to the proper battery terminals. Confirm the 20A fuse is installed and not damaged.

*Orange Wire = Battery (+)
Black Wire = Battery (-)*



INSTALLATION INSTRUCTIONS

STEP 14: Install the fuel level float arm onto the PowerFlo lift pump by gently clipping the arm into the fuel level sensor. Slightly compress the sending unit assembly downward to simulate it's installed position in the fuel tank. With the top slightly depressed, move the float arm up and down, ensure that the arm does not contact the pump wires in the full up or full down position.



STEP 15: Install the PowerFlo pump assembly into the tank and reinstall the retaining ring using your hammer and punch or chisel by rotating it clockwise to the fully engaged position. Ensure proper orientation of the pump and fittings matches the orientation of the original pump.

NOTE: Use caution when installing the pump to not damage the float arm.



INSTALLATION INSTRUCTIONS

STEP 16: Make the proper connections for the fuel lines, vent, fill tube, and electrical connection. Make sure the quick disconnect fuel lines are fully seated with retaining clips in place. When the quick disconnect fitting is fully seated you will not be able to pull it back off the pump fitting without releasing the retaining clip.



STEP 17: Re-install the truck bed

STEP 18: Re-install the bolts that retain the bed of the truck to the frame. For the short bed model, there will be 6 fasteners. For the long bed model, there will be 8 fasteners.

STEP 19: Re-install the fuel filler neck to the truck bed.

STEP 20: Re-install any remaining items connected to the truck bed that were removed.

STEP 21: Re-install the tailgate, rear bumper, and taillights.

STEP 22: Re-connect the battery.