

FISHBONE
OFFROAD



INSTALLATION INSTRUCTIONS

PART No.

FB31264

**2018-Current JL Wrangler
Piranha Backside Plate**



REQUIRED TOOLS

Ratchet
4mm Allen
12mm Socket
13mm Socket
T6 Torx Bit
T25 Torx Bit

KIT CONTAINS

M2 Button Head Bolt
M6 Button Head Bolt
M6 Nyloc Nut
Delete Plug

QTY

3
4
4
2

1) **PREPARE**



Using a T-40 Torx wrench remove your spare tires retaining clip. Next remove the three lug nuts and remove the vehicle's spare tire.



Using a 13mm Socket remove the eight tire carrier bolts. Using a T-25 Torx bit remove the backup camera retaining plate, pull the camera free from the backside of the tire carrier.

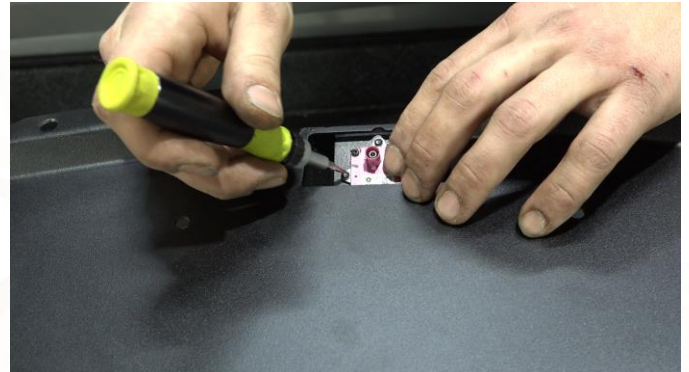


Using a T-6 Torx bit unscrew the Backup camera from its mount. And remove the camera feed cable. Carefully place the camera aside.

Firmly grip and pull at the Spare Tire Bump Stops and remove them from the vehicle.

2) **ASSEMBLE AND INSTALL**

Using a T-6 Torx, carefully install your backup camera into the backside mount and reconnect its power.





INSTALLATION INSTRUCTIONS

PART No.

FB31264

**2018-Current JL Wrangler
Piranha Backside Plate**

NOTE: If you wish to paint the included Accent Plate, do so now.

Using a 4mm Allen Wrench and 12mm socket with the included button head bolts secure your license plate and/or Accent Plate to the backside.



With the camera facing down place the Backside to the tailgate and secure it to the tailgate using the eight 13mm bolts.

With the included 2 delete plugs, fill in the 2 holes Bump Stop holes that flank the bottom of the Backside.

ENJOY YOUR FISHBONE OFFROAD BACKSIDE PLATE!

Discover other spare tire covers and carriers on our website.