

## INSTALLATION INSTRUCTIONS

**PART No.**

**FB22079**

**Jeep® XJ Cherokee  
Bullhead Rear Bumper**



### REQUIRED TOOLS

17mm Socket/wrench  
19mm Socket/wrench

### KIT CONTAINS

Bullhead bumper  
Nut plate  
Chassis bracket  
Lower bracket  
D-ring  
M10 hex bolt  
M10 flat washer  
M10 lock washer  
M12 hex bolt  
M12 serrated nut  
M12 flat washer  
M12 lock washer

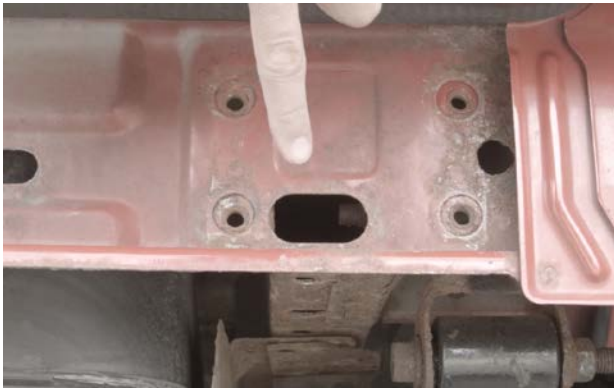
### QTY

1  
2  
2  
2  
2  
8  
8  
8  
10  
6  
10  
10

## Jeep® XJ Cherokee Bullhead Rear Bumper

### 1) REMOVE YOUR FACTORY BUMPER

Remove your vehicle's existing factory bumper. If equipped, also remove the vehicle's existing factory nut plate. This will require removing the muffler bracket bolts and tank skid plate bolts.



### 2) INSERT PROVIDED NUT PLATES

Insert the supplied nut plates, noting correct orientation as shown below.

Driver side plate



Passenger side plate

Re-secure muffler and skid plate bolts to the new nut plate.

### 3) INSTALL CHASSIS BRACKET

Using eight (8) M10 bolts, flat washers, and lock washers, loosely secure the two (2) chassis brackets to the vehicle.



Set your bumper onto the brackets and position it centered on the vehicle. Ensure both brackets are contacting the inside bumper brackets.



Remove the bumper and secure the brackets in the location you've identified as center.



### 4) INSTALL YOUR BUMPER

Place the bumper back on the secured chassis brackets. Using the supplied M12 hardware, secure the bumper to the chassis brackets. Ensure the bumper is positioned parallel to the ground before tightening the hardware.



Install the two (2) lower brackets using M12 hardware. On either side, two (2) bolts will install into the previously installed nut plates, and one will be secured using a supplied M12 serrated nut.



**5) INSTALL THE DRINGS**

Install the supplied D-Rings.



**6) ENJOY YOUR NEW FISHBONE OFFROAD BULLHEAD REAR BUMPER!**