

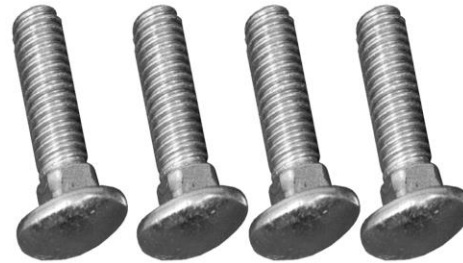


INSTALLATION INSTRUCTIONS

PART No.

FB21301

**Universal Truck Bed
Universal In-Bed Tire Carrier**



REQUIRED TOOLS

19MM Socket/Wrench
Drill
.5" Drill Bit
Drill Stop
Paint
Thread Locker
Marker

KIT CONTAINS

Carrier Bin
Ratchet Strap
Carriage Bolt
Hex Nut
Oversized Washer

QTY

1
2
4
4
4

INSTALLATION INSTRUCTIONS

PART No.

FB21301

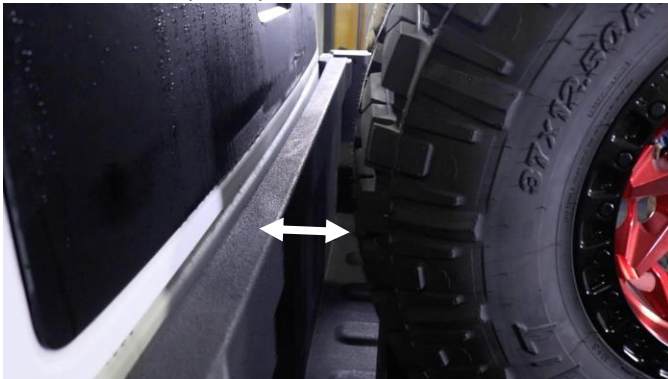
Universal Truck Bed Universal In-Bed Tire Carrier

1) PLAN THE INSTALLATION

Place the carrier into the bed of your vehicle as desired.

Take note and special care to ensure that during the installation process, damage to vital components won't occur below the bed, and that the locations underneath have enough clearance for the 4 bed washers.

Place your tire onto the mount and ensure it will rest without any complications.



With a marker, mark the bolt holes to help identify the drill locations.



Again, ensure that drilling below these points won't damage vital components

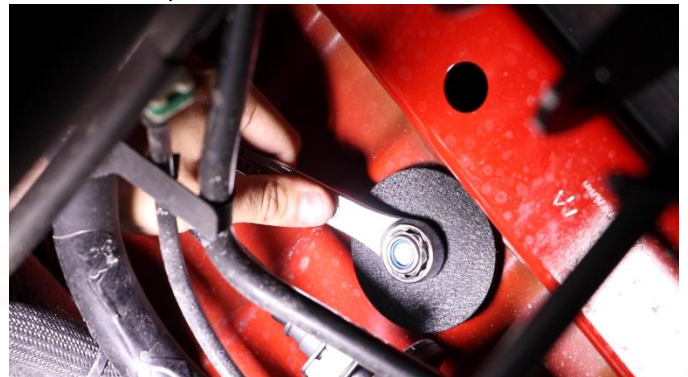
2) DRILL

Begin drilling the bed with a drill stop starting with a pilot and working your way up to a .5in bit.



3) INSTALL

Begin securing the carrier to the bed using the 4 carriage bolts, bed washers, and hex nuts with a 19mm socket/wrench.



Place your tire onto the carrier and secure it with the included ratchet straps by hooking it into the triangle shaped holes located on the front and back of the bin.

