



INSTALLATION INSTRUCTIONS

PART No.

FB21290

**Toyota® 2005+ Tacoma
Bed Stiffener Tie Down Brackets**



REQUIRED TOOLS

T55 Torx
T40
Socket
10mm Socket
Marker
Center Punch
Drill
1/8"-29/64" Drill Bit
Paint
5mm Hex Key
M8 Nutsert Tool
Threadlocker

KIT CONTAINS

Stiffener Brackets (Left & Right)
M8 Nutsert
M8 Button Head Bolt
M8 Washer
M8 Lock Washer

QTY

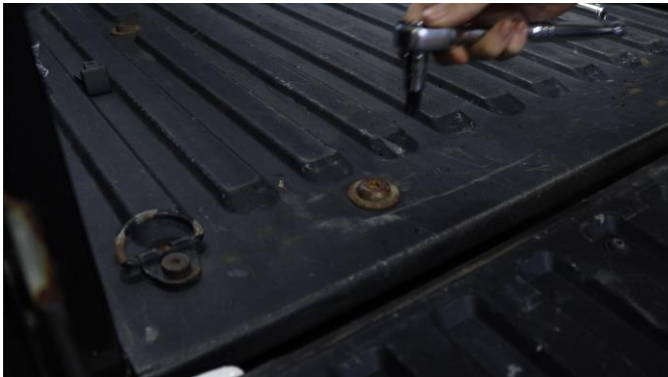
1ea
8
8
8
8

Toyota® 2005+ Tacoma Bed Stiffener Tie Down Brackets

1) PREPARE YOUR BED

REMOVE BED BOLTS

Open your tailgate and locate the 2 rear bed bolts and 2 tie down bolts. Remove the bed bolts with a T55 Torx bit, and the tie down bolts with a T40.



REMOVE YOUR TAIL LIGHTS

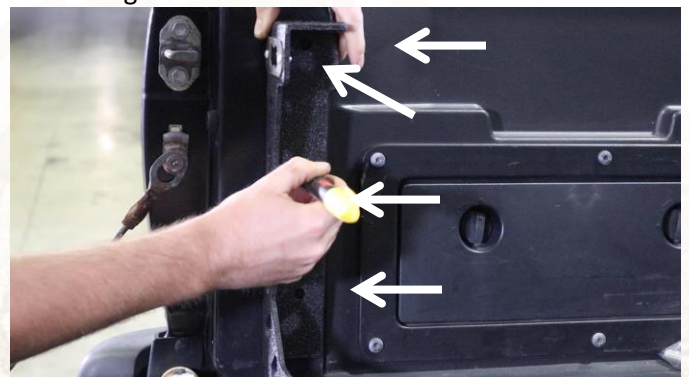
With a 10mm socket, remove the 3 bolts securing each tail light. Gently tug the housing free from its clips, and disconnect it from its power harness. This is to prevent damage to the harness while drilling in the next step.



2) DRILL & FASTEN

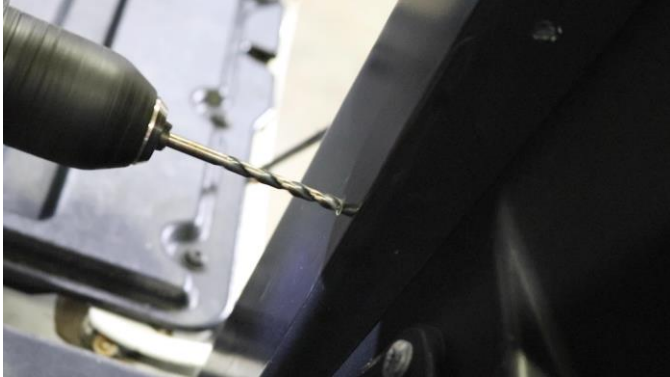
MARK HOLES

Align the base of the part with the bed bolt holes. With a marker, mark the 4 hole locations for drilling: 3 on the inner face, and 1 on the upper, rear facing bend.



Toyota® 2005+ Tacoma Bed Stiffener Tie Down Brackets

Center-punch each marking and begin drilling, while taking care to not damage the tail light power harness. Start small with a pilot bit (1/8"), and work your way up to a 29/64" bit.



Apply paint to the exposed metal to help prevent rust formation.

INSERT NUTSERTS

Begin installing nutserts into each hole with an M12 Nutsert tool. Coat each Nutsert with Threadlocker before crushing into place.



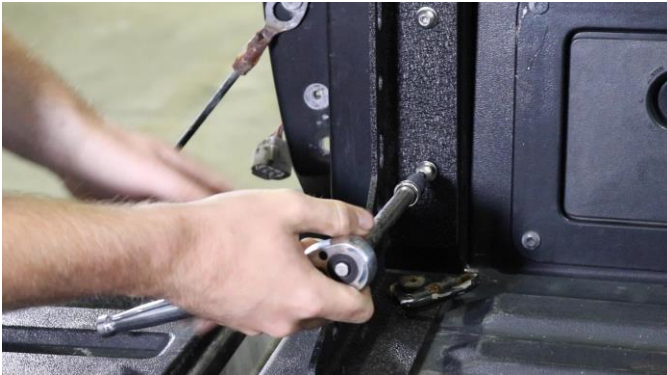
3) **INSTALL YOUR STIFFENERS**

Begin installing your stiffeners starting with reinstalling the bed and tie down bolts. In order for the tie down bolts to secure, you will need to remove the bolt's 3 washers.

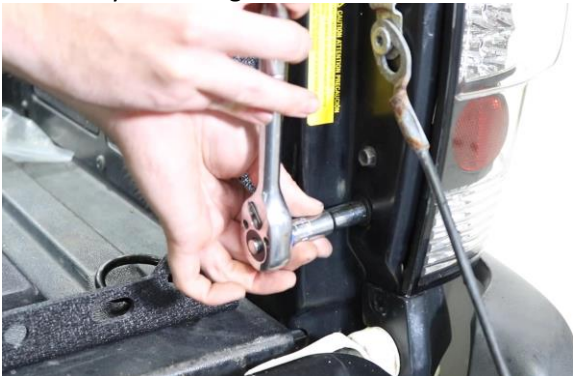


**Toyota® 2005+ Tacoma
Bed Stiffener Tie Down Brackets**

With an 5mm hex key and 4 of the included bolts, washers, and lock washers, completely secure the bracket to the bed. Repeat on the opposite side.



Reinstall your tail lights.



4) ENJOY YOUR NEW BED STIFFENERS

