

INSTRUCTIONS

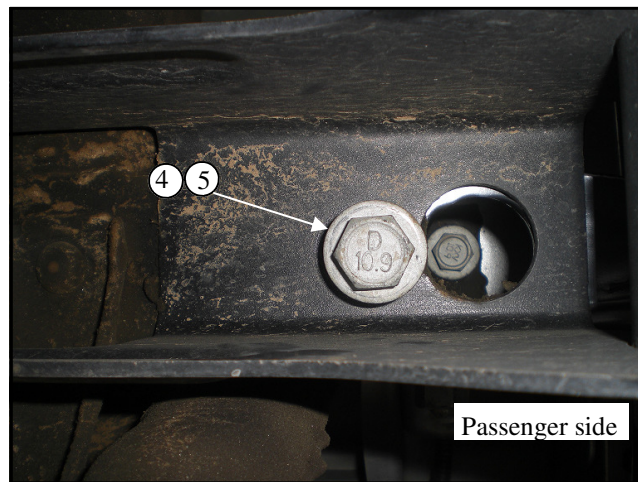
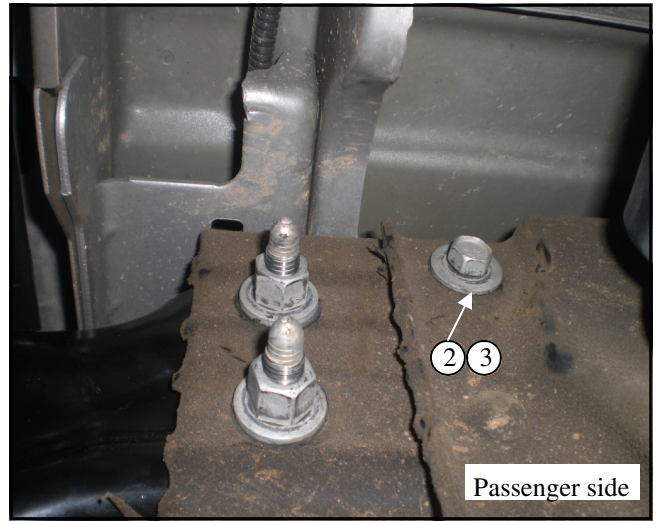
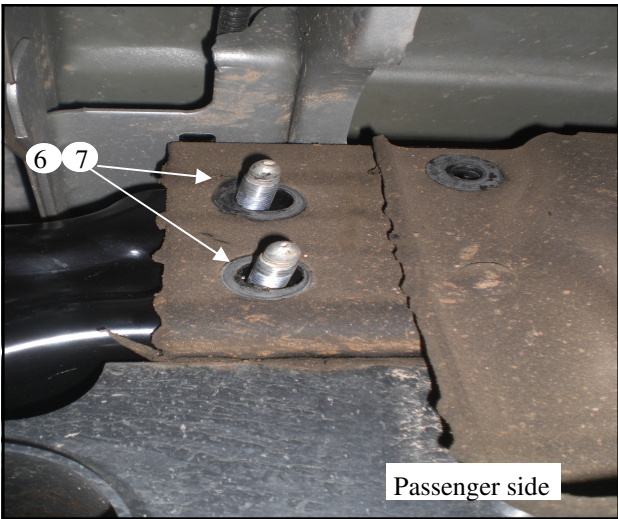
APPLICATION: 2007-2010 CHEVY SILVERADO 1500/GMC SIERRA 1500

PART # 31023, 31024, 32023, 32024

PERFECT MATCH BUMPER

ITEM	QUANTITY	DESCRIPTION	TOOLS NEEDED
1	1	BUMPER	16MM SOCKET
2	2	M10 X 1.5 HEX HEAD BOLTS	18MM SOCKET AND WRENCH
3	2	M10 FLAT WASHERS	21MM SOCKET
4	2	M14 X 2.0 HEX HEAD BOLTS	RATCHET
5	2	M14 FLAT WASHERS	TORQUE WRENCH
6	2	M12 BOLT PLATES	
7	4	M12 FLANGE NUTS	

1. Remove contents from box, make sure all parts listed are present and free from damage. Carefully read and understand all instructions before attempting installation.
2. Disconnect all electrical connections running to the bumper.
3. Remove all factory hardware attaching bumper to frame, and remove the bumper
4. Carefully remove all backup sensors , license plate lights, trailer electrical connector, spare tire release guide and wire looms from the bumper.
5. Re install all components taken off in step 3 onto the new bumper.
6. With help take the new bumper and align it with the mounting holes in the frame. Attach using two (item 2) M10 hex head bolts , two (item 3) M10 flat washers , two (item 4) M14 hex head bolts, two (item 5) M14 flat washers, two (item 6) M12 bolt plates, and four (item 7) M12 flange nuts. do not fully tighten at this time.) FIG 1, 2, 3,
7. Reconnect all electrical connections taken off in step 2
8. Level and adjust bumper as needed then fully tighten all hardware at this time
9. Torque all M10 hardware to 30-35 ft lbs, M12 hardware to 45-50 ft lbs and all M14 hardware to 70-75 ft lbs



Change the way you and others look at your truck with FEY Automotive.