

GB

Attention: Risk of mixing up!

Both hydraulic cam followers (febi no. 08064 and febi no. 19800) look identical. The materials and the coatings, however, are different!

Hydraulic cam follower febi no. 19800 has a special hardened coating and is the only one which suits camshaft febi no. 29852. Hydraulic cam follower febi no. 08064 on the other hand does not have this coating and is therefore too soft. It is not suitable for use with camshaft febi no. 29852 as it can wear out quickly and thus damage the engine.

Pay particular attention to their use and in which engines they are fitted!



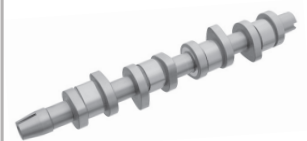
febi 08064

Vergl. Nr. / Repl. no.
034 109 309 AD (VW)
Vergl. Nr. / Repl. no.
1 669 765 (Ford)
Vergl. Nr. / Repl. no.
9186568 (Volvo)



febi 19800

Vergl. Nr. / Repl. no.
038 109 309 C (VW)
Vergl. Nr. / Repl. no.
1 426 035 (Ford)



febi 29852

Vergl. Nr. / Repl. no.
038 109 101 R