

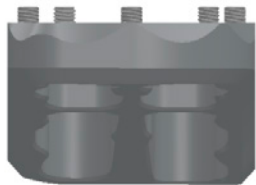
Footpeg Installation Instructions

Thank you for your purchase! We are confident that you will be pleased with the quality of our product.

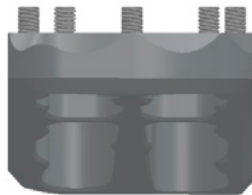
1. Some models include an instruction addendum. Be sure to use the addendum along with this instruction sheet if one is included.
2. The Universal Collar System enables you to set up the footpeg up at either the standard stock position or in a lower configuration. Insert the collar in the footpeg mounting hole from the bottom for a (standard) stock peg height, or from the top for the lower configuration which moves the peg down and back. Collars will require a little pressure to install as they are a tapered press fit. This can be accomplished using the supplied cylinder tool and a vise or hammer. To remove the collar, simply use the supplied cylinder tool from the opposite side.
3. After you have installed the collar in the desired position, install the FKMS (Camber) bolt into each peg. Mount the peg on the bike without the return spring and check the angle of the peg. Add shims behind the camber bolt until the pegs are leveled, or if you choose you can add more shims so you can have a "knee-in" effect which some riders prefer. Once you are satisfied with the mounting position remove the FKMS bolt and clean the bolt and footpeg threads with primer or contact cleaner. Apply a thread locking compound on the bolt's thread and reinstall. Be sure to frequently check the camber bolts for tightness!
4. Install footpeg cleats in the pegs using the supplied thread locking compound. Two sizes are included for additional adjustment.
5. Mount the pegs to the bike re-using the stock frame pins. **Note:** Gold spring placement on the right, silver on the left when mounting the pegs in the lower position and gold spring on the left and silver on the right when mounting pegs in the standard position. Spring placement differs slightly on Adventure or Evolution Air pegs which fit in a milled hole. Some bike models may require the spring to be installed inside the bracket rather than hooked on the edge.

Cleat Positioning

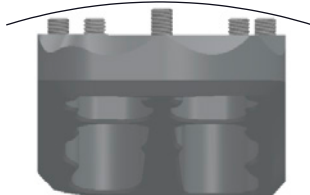
All 10mm Cleats
Low profile and increased boot life



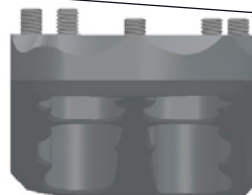
All 12mm Cleats
Aggressive traction



Tall Center Row
Keep feet locked on the peg with room to roll



Tall Back Row
More toe freedom for braking and shifting



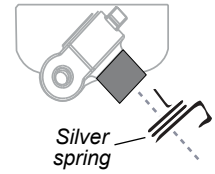
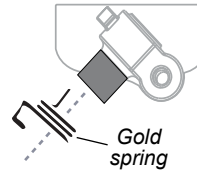
Cleats can be swapped out anywhere on the peg to keep your feet in exactly the right place.

Fastway footpegs - perfect feel for any setup!

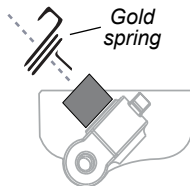
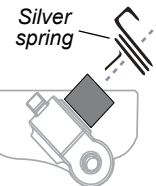
F5 & F7 cleats are sold separately.



STANDARD



LO-BOY

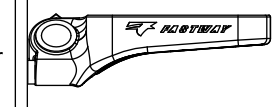
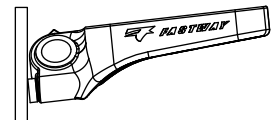


FKMS - Fast Kamber Mounting System - (patent # 6,339,972)

Our patented FKMS- Fast Kamber Mounting System uses shims to allow adjustment of the upward or downward tilt of your pegs.

Use more shims=knees closer to the bike; less shims=knees further apart.

Our new improved grade 8 zinc coated steel FKMS bolts are more durable than ever for long life and ease of adjustment.



FKMS Bolt



KTM/Husqvarna Installation Addendum

Thank you for your purchase! We are confident that you will be pleased with the quality of our product.

NOTE: We recommend using a thread-locking agent on all bolt threads.

Before you begin:

Be sure to reference the primary “Footpeg Installation Instructions” below for peg assembly, installation, and adjustment.

Read the main instructions carefully before starting the installation. If you do not have all the required tools or are not comfortable performing the work involved, have your dealer install the footpegs for you.

The frame guard plastics may need to be trimmed to allow the Fastway footpegs to function and pivot properly. This addendum will show the best way to trim the frame guard plastics, however the process may need to be modified to address a specific model of bike or future changes by the manufacturer.

Installation notes:

1. Remove the right and left frame guard plastics, by removing the fasteners and zip ties that hold the frame guard plastics on the frame. The right and left frame guard plastics begin at the footpeg clevises.
2. Use a razor blade or utility knife to trim the left frame guard on the cut line as shown in Figure 1.
3. Use a razor blade or utility knife to trim the right frame guard plastic. The right frame guard plastic differs slightly from the left frame guard plastic, however emulate the same cut position and direction that was used on the left frame guard plastic.
4. Use the fasteners to reinstall the frame guard plastics while leaving off the zip ties.
5. Verify that the Fastway footpegs will pivot upward without interfering with the frame guard plastics.
6. Make any needed trimming adjustments by removing the frame guard plastics and adjusting the cut. Repeat steps 5 and 6 until there is no longer any interference between the footpegs and the frame guard plastics.
7. Tighten everything up, and replace zip ties in their proper placement.

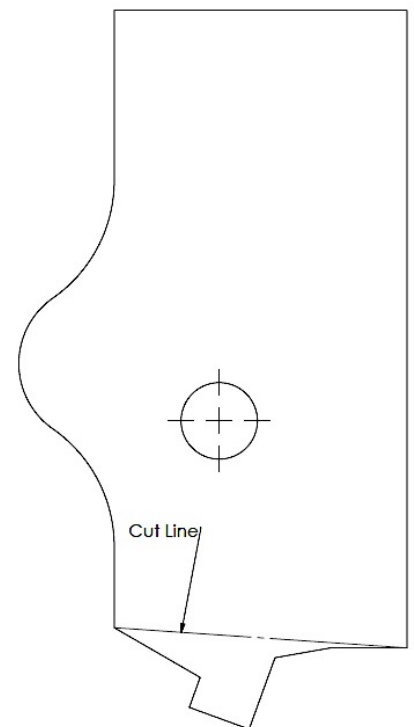
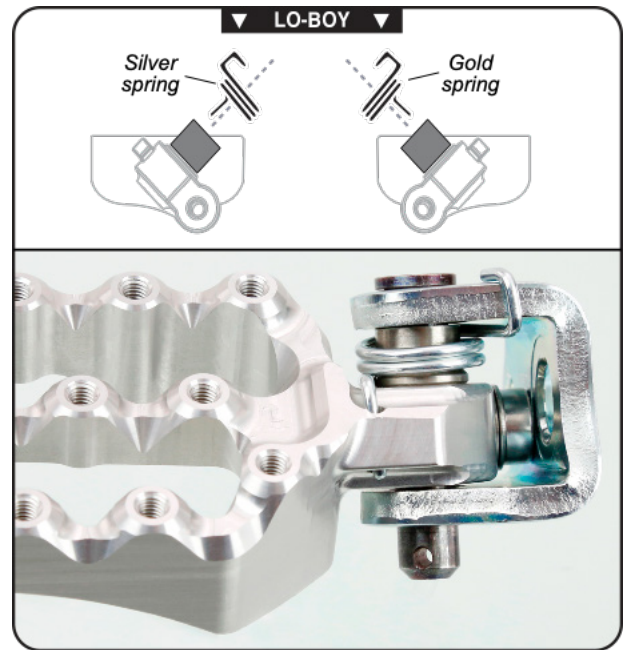
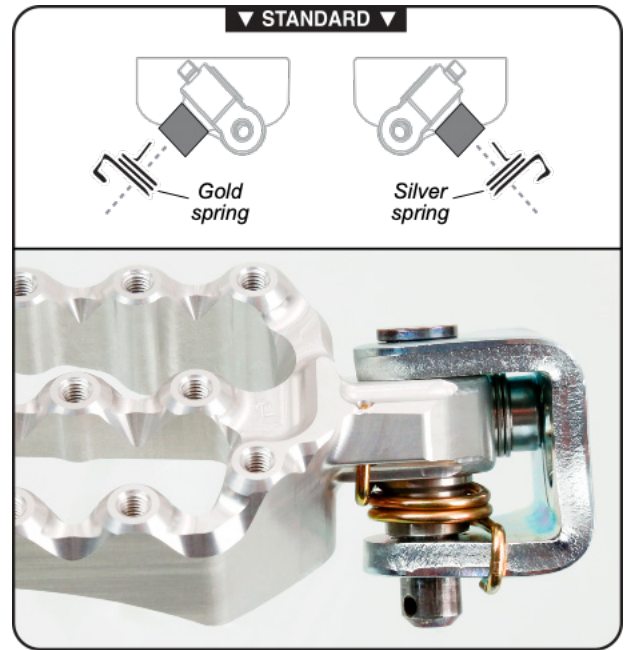


Figure 1- Left Frame Guard Profile. Depicts the bottom of the left frame guard plastic and the optimal cut line to allow the Fastway footpegs to function properly. **NOTE: Not drawn to scale, to be used for reference.**

Footpeg Installation Instructions

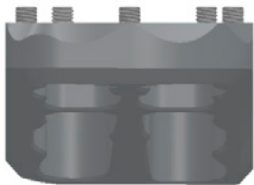
Thank you for your purchase! We are confident that you will be pleased with the quality of our product.

1. Some models include an instruction addendum. Be sure to use the addendum along with this instruction sheet if one is included.
2. The Universal Collar System enables you to set up the footpeg up at either the standard stock position or in a lower configuration. Insert the collar in the footpeg mounting hole from the bottom for a (standard) stock peg height, or from the top for the lower configuration which moves the peg down and back. Collars will require a little pressure to install as they are a tapered press fit. This can be accomplished using the supplied cylinder tool and a vise or hammer. To remove the collar, simply use the supplied cylinder tool from the opposite side.
3. After you have installed the collar in the desired position, install the FKMS (Camber) bolt into each peg. Mount the peg on the bike without the return spring and check the angle of the peg. Add shims behind the camber bolt until the pegs are leveled, or if you choose you can add more shims so you can have a "knee-in" effect which some riders prefer. Once you are satisfied with the mounting position remove the FKMS bolt and clean the bolt and footpeg threads with primer or contact cleaner. Apply a thread locking compound on the bolt's thread and reinstall. Be sure to frequently check the camber bolts for tightness!
4. Install footpeg cleats in the pegs using the supplied thread locking compound. Two sizes are included for additional adjustment.
5. Mount the pegs to the bike re-using the stock frame pins. **Note:** Gold spring placement on the right, silver on the left when mounting the pegs in the lower position and gold spring on the left and silver on the right when mounting pegs in the standard position. Spring placement differs slightly on Adventure or Evolution Air pegs which fit in a milled hole. Some bike models may require the spring to be installed inside the bracket rather than hooked on the edge.

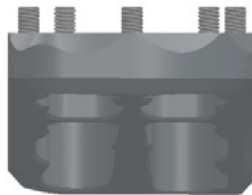


Cleat Positioning

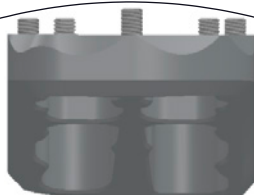
All 10mm Cleats
Low profile and increased boot life



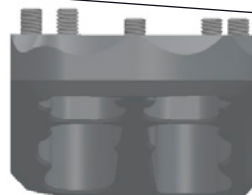
All 12mm Cleats
Aggressive traction



Tall Center Row
Keep feet locked on the peg with room to roll



Tall Back Row
More toe freedom for braking and shifting



Cleats can be swapped out anywhere on the peg to keep your feet in exactly the right place.

Fastway footpegs - perfect feel for any setup!

F5 & F7 cleats are sold separately.



F5 Cleat



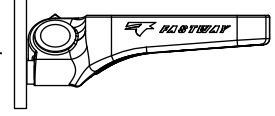
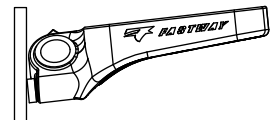
F7 Cleat

FKMS - Fast Kamber Mounting System - (patent # 6,339,972)

Our patented FKMS- Fast Kamber Mounting System uses shims to allow adjustment of the upward or downward tilt of your pegs.

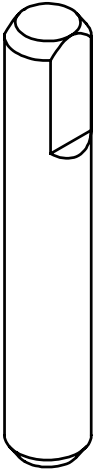
Use more shims=knees closer to the bike; less shims=knees further apart.

Our new improved grade 8 zinc coated steel FKMS bolts are more durable than ever for long life and ease of adjustment.

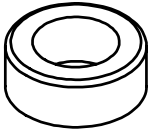


FKMS Bolt





Please note that this spacer is not welded onto the pin.



The spacer has been press fit and can be adjusted without damaging either component.

While the pin is in the post, tap with a hammer to adjust the pin height.

