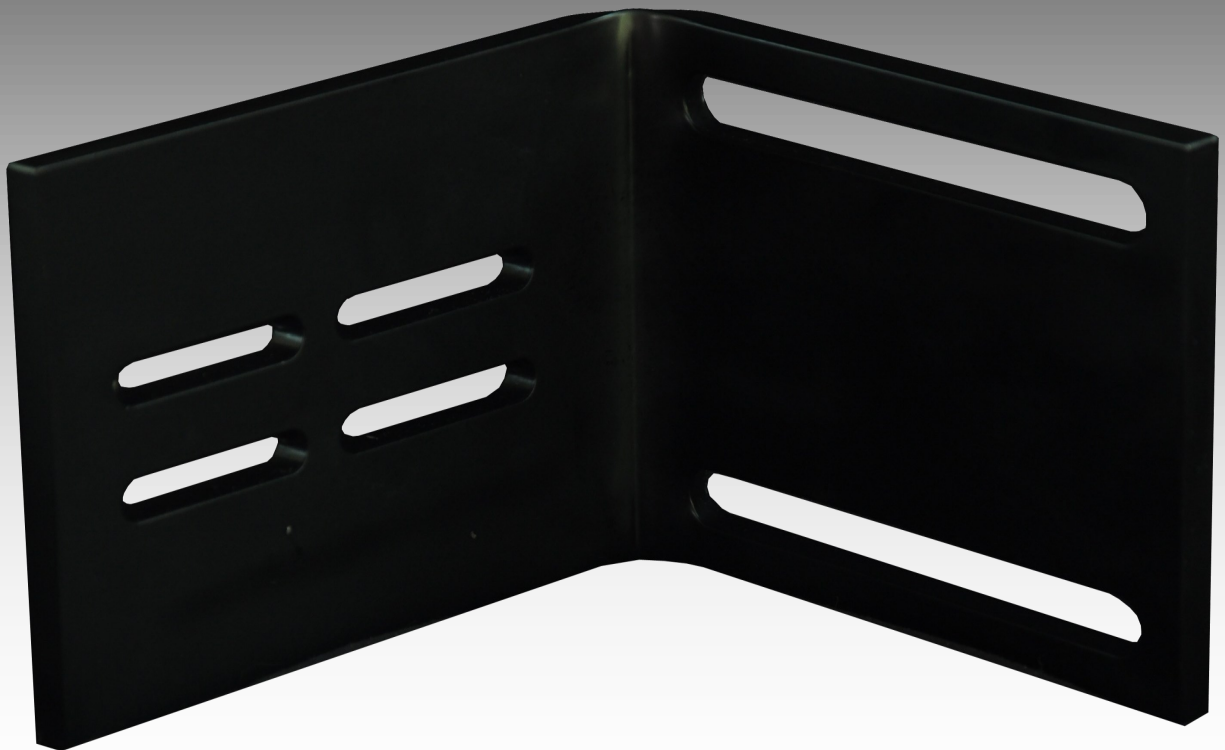


# INSTALLATION MANUAL

# SFB-1001

**ACCESSORY:**

SEMI [Frame Bracket](#)



**FASS**<sup>®</sup>  
Diesel Fuel Systems

ENGINEERED EXCELLENCE

# INSTALLATION MANUAL

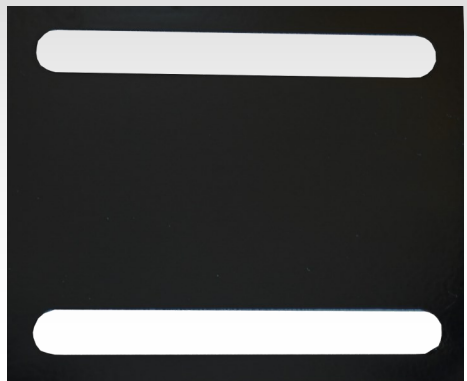
## Follow these steps to ensure a simple installation of your new FASS ACCESSORY

1. *Read the installation manual completely before attempting installation. The installation of this product indicates that the buyer has read and understands the limitations of the FASS manufacturers warranty agreement and accepts the responsibility of its terms and conditions.*
2. Inventory the package components. Notify the place of purchase immediately of any parts missing or damaged.
3. The installation recommendations contained herein are guidelines. Use good judgment and take into consideration your vehicles' accessories.
4. For best results in accuracy and efficiency (due to training, communication, and our relationship with our dealer network), we recommend an Authorized or ViP FASS Fuel Systems dealer for the installation. They are prepared to install the FASS fuel pumps with the most efficiency. If a situation/problem arises during the installation, they are the most prepared for that situation/problem. DPPI is not responsible for any installation mistakes.

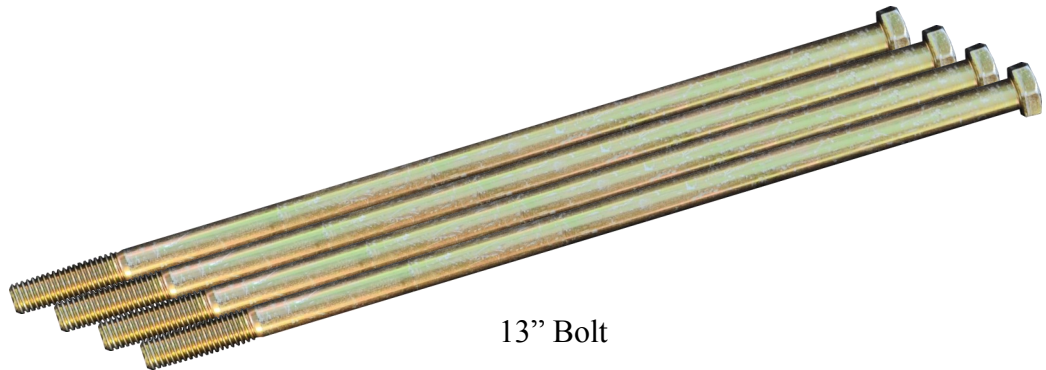
# CONTENTS



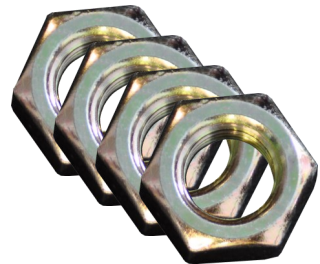
FB-1011A



FB-1011B



13'' Bolt



1/2'' Nut



Lock Washer



1/2'' Washer

# INSTALLATION

- A. Slide 1/2" washer onto each one of the 13" bolts.



Note: Either frame bracket may be place on top or bottom of the frame opposite of mating frame bracket.

- B. Place 13" bolts with 1/2" washer through the slots.



- C. Spread the bolts apart, place bracket over frame with 2 bolts on each side of the frame.



- D. Place the FB-1011B while inserting the threaded end of the 13" bolts through the slots.

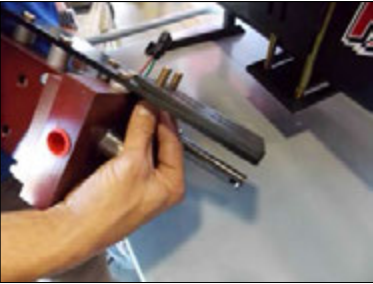


- E. 1st slide the 1/2" washer on followed by the lock washer and nut. Repeat this for all 4 bolts. Snug all 4 nuts down to the point where the brackets will slide.



# INSTALLATION

- F. 1st slide the 1/2" washer on followed by the lock washer and nut. Repeat this for all 4 bolts. Snug all 4 nuts down to the point where the brackets will slide.



- G. 1st slide the 1/2" washer on followed by the lock washer and nut. Repeat this for all 4 bolts. Snug all 4 nuts down to the point where the brackets will slide.



- H. 1st slide the 1/2" washer on followed by the lock washer and nut. Repeat this for all 4 bolts. Snug all 4 nuts down to the point where the brackets will slide.

