

INSTALLATION MANUAL

DFD-4000

ACCESSORY:

Duramax [Filter](#) Delete



FASS[®]
Diesel Fuel Systems

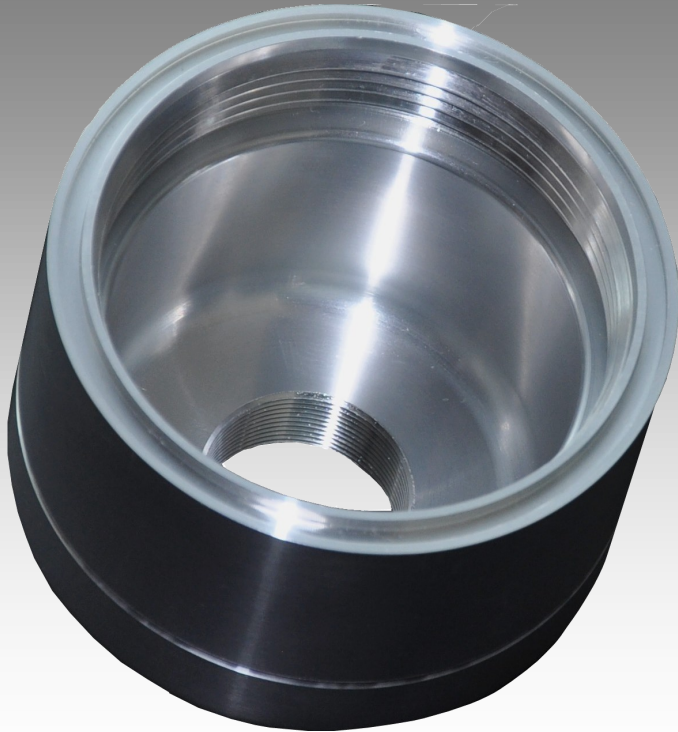
ENGINEERED EXCELLENCE

INSTALLATION MANUAL

Follow these steps to ensure a simple installation of your new FASS ACCESSORY

1. *Read the installation manual completely before attempting installation. The installation of this product indicates that the buyer has read and understands the limitations of the FASS manufacturers warranty agreement and accepts the responsibility of its terms and conditions.*
2. Inventory the package components. Notify the place of purchase immediately of any parts missing or damaged.
3. The installation recommendations contained herein are guidelines. Use good judgment and take into consideration your vehicles' accessories.
4. For best results in accuracy and efficiency (due to training, communication, and our relationship with our dealer network), we recommend an Authorized or ViP FASS Fuel Systems dealer for the installation. They are prepared to install the FASS fuel pumps with the most efficiency. If a situation/problem arises during the installation, they are the most prepared for that situation/problem. DPPI is not responsible for any installation mistakes.

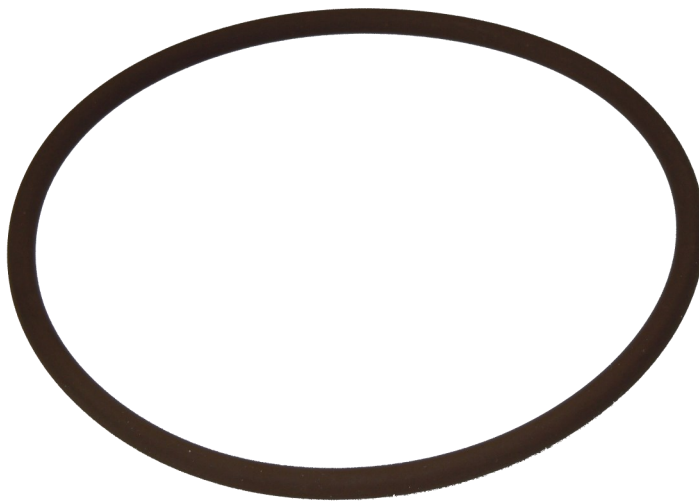
CONTENTS



DFD-4000



Brass Plug



O-Ring

ATTENTION!!!! ONLY USE WITH AN EXTERNAL FILTER SYSTEM WITH PROPER MICRON RATINGS!!!! CLEAN BEFORE INSTALLING!!!!

INSTALLATION

- A. Drain factory filter, remove filter and unplug factory fuel heater wire located on top of factory filter head



- B. Using a T20 Torx bit remove the 2 screws holding the factory fuel heater in place. Be sure not to lose the 2 o-rings on this fuel heater. Once removed pull the ball and spring out of the filter head



- C. Reinstall fuel heater into filter head without the ball and spring. DO NOT OVER TIGHTEN SCREWS



- D. Install o-ring into DFD-4000 and apply oil or grease to prevent damage to o-ring. Insert fuel pressure gauge or supplied brass plug into DFD-4000.



- E. Remove WIF sensor from factory filter and reinstall into DFD-4000. Reconnect the fuel heater wire and screw DFD-4000 onto factory filter head. DO NOT OVER TIGHTEN

