



Transmission Drop Bracket

FTS93007

**2006 - 2010 Dodge Ram 2500 4wd
Gas Engine w/ automatic transmission**

Parts List

Qu a	Part #	Description
1	FT44116	Transmission Bracket
1	FTS419	Carrier Drop Kit
1	FT93007i	Instruction Sheet

Tool List: (Not Included)

- Jack w/ Jack stands
- Assorted S.A.E Sockets & Combination Wrenches
- Transmission Jack
- Torque Wrench

THIS DROP BRACKET WILL ONLY WORK WITH TRUCKS EQUIPPED THE GAS ENGINE AND AUTOMATIC TRANSMISSION.

THIS BRACKET IS DESIGNED FOR USE ONLY WITH A FABTECH 4.5" or 6" SUSPENSION SYSTEM

READ ALL INSTRUCTIONS THOROUGHLY FROM START TO FINISH BEFORE BEGINNING INSTALLATION!

INSTRUCTIONS:

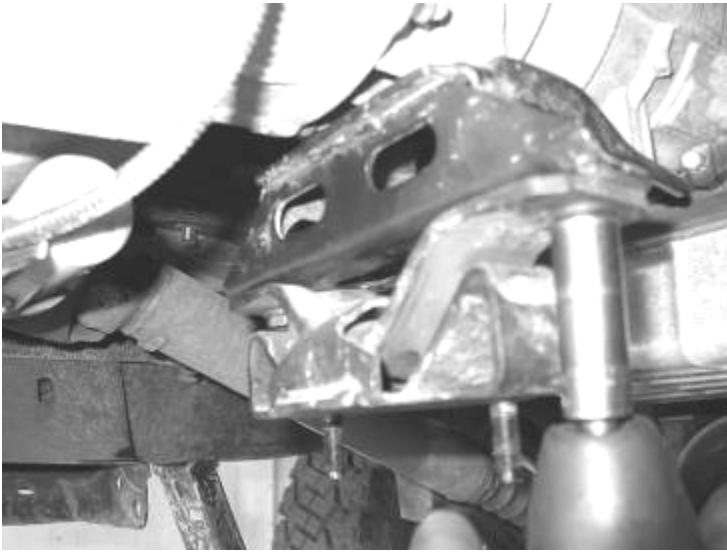
1. Disconnect the negative terminal on the battery. With the vehicle on level ground, set the emergency brake and block the rear tires. Jack up the front end of the truck and support the frame rails with jack stands just behind the front bumper. **NEVER WORK UNDER AN UN-SUPPORTED VEHICLE.**
2. Support the transfer case and transmission with a transmission or floor jack. Remove the transfer case skid plate (if equipped) and save with the hardware. SEE PHOTOS BELOW



3. Remove the two transmission mount nuts from the crossmember. Carefully raise the transmission and remove the four crossmember bolts from the frame saving the crossmember and the hardware. SEE PHOTOS IN NEXT COLUMN



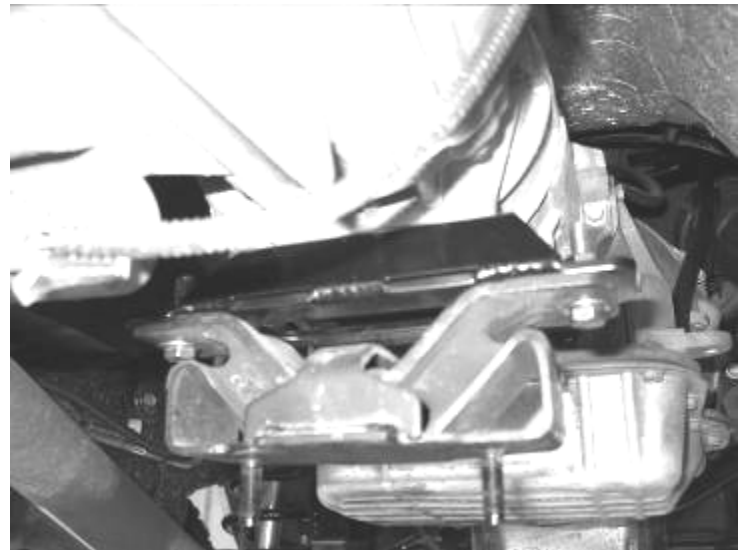
4. Remove the two bolts that hold the factory trans bracket to the trans mount. Remove the four bolts that secure the trans mount to the transmission. Raise the jack just enough so that the stock mount can be removed. SEE PHOTO ON NEXT PAGE



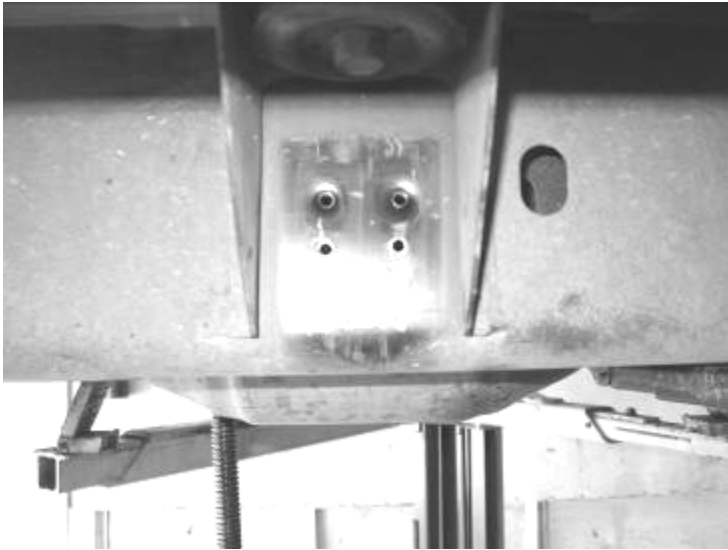
5. Loosen the two exhaust clamps (1 in front of & 1 behind the catalytic converter). And spray the coupling with penetrating oil (WD-40). This will allow the transmission to lower easier. SEE PHOTO IN NEXT COLUMN



6. Locate FT44116 Drop Transmission Bracket and factory hardware. Install the new mount onto the trans and then the mount onto the trans bracket. Re-install the crossmember. Lower the transmission and re-install the factory flange nuts securing the trans mount to the crossmember Tighten all of the nuts and bolts. Lower the jack that was used to support the transmission and torque all of the hardware to 95 ft. lbs. Re-tighten the exhaust clamps. SEE PHOTOS BELOW.



7. If your vehicle has the transfer case skid plate, you will need to lower the four rear mounting holes to provide clearance for the catalytic converter. Mark the four new hole locations 1" below factory holes and drill to 1/4". Re-install skid plate using self-tapping bolts provided with this kit. SEE PHOTO ON NEXT PAGE



8. Locate the supplied FTS419 kit. Remove the two bolts securing the drive shaft carrier bearing to the frame cross member. **SUPPORT THE DRIVE SHAFT WITH ROPE OR A STRAP, DO NOT LET IT HANG WITH SUPPORT.**
9. Determine the amount of shims necessary for the amount of suspension lift installed. For a 4.5" lift, you will start with 1/2 of the shims and for the 6" lift, use all the supplied shims and the 10mm x 75mm bolts.
10. Place the shims in between the carrier bearing and frame. Place a lock washer, followed by a flat washer on each bolt and insert them through the carrier bearing and shims, into the frame inserts. Fully torque all hardware to 30 ft/lbs.
11. After driving the vehicle, small adjustments can be made by adding or removing shims until the vibration is reduced or eliminated. Because of the added leverage induced by larger tires and lift systems, all driveline vibrations may not be completely eliminated.