



FTS92006
Coil Shim Kit
2005 - 2007 Ford F250 & F350 4WD

PARTS LIST:

Qua	Part #	Description
2	FT30218	Coil Shim
1	FT30239	Hardware Kit
1	FTLOCK	Lock Tight
2	FT92006i	Instruction Sheet

HARDWARE LIST:

Qua	Description
1	14mm-2.0 x 60mm
1	14mm-2.0 x 70mm

TOOL LIST:

- Assorted Metric & Standard Wrenches
- Torque Wrench
- Floor Jack
- Jack Stands

WARNING

THIS KIT IS DESIGNED TO ONLY LEVEL THE TRUCK HEIGHT FROM LEFT TO RIGHT.

DO NOT USE AS A SOURCE OF ADDITIONAL LIFT.

DO NOT STACK MORE THAN TWO SHIMS PER SIDE.

THIS KIT WILL NOT WORK WITH THE FABTECH DUAL SHOCK SYSTEM

READ ALL INSTRUCTIONS THOROUGHLY FROM START TO FINISH BEFORE BEGINNING INSTALLATION.

DO NOT ALTER THE FINISH OF THESE COMPONENTS, EXAMPLE- CHROMING, ZINC PLATING OR PAINTING. CHANGING THE FINISH CAN CAUSE STRUCTURAL FATIGUE OF COMPONENTS.

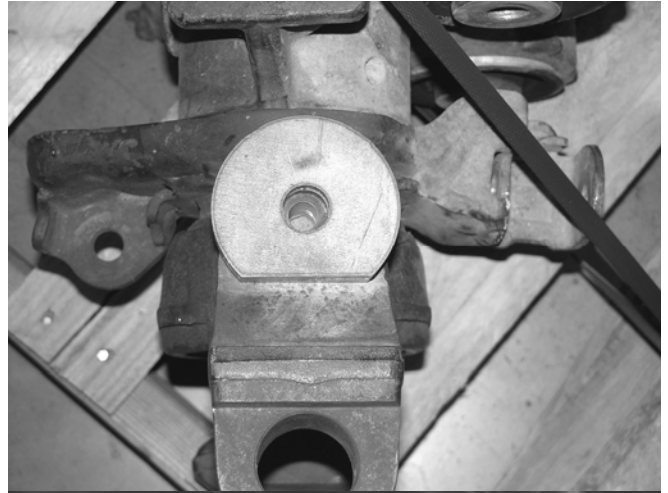
INSTALLATION INSTRUCTIONS:

1. Disconnect the negative terminal on the battery. Park the truck on level ground. Take a measurement from both sides of the truck from the axle centerline to the bottom of the front fender lip. This will determine if one or two shims will be required to level the truck from side to side. Record the measurements below.

Driver Side

Passenger Side

2. Jack up the front end of the truck and support the frame, at the front frame rails, with jack stands. **NEVER WORK UNDER AN UNSUPPORTED VEHICLE.** Remove the front tires.
3. Working from the side of the truck that is lower, remove the brake caliper and tie it up out of the way. **DO NOT ALLOW THE CALIPER TO HANG FROM THE BRAKE LINES!** Remove the brake line and ABS line tabs from the front side and the rear side of the coil spring perch on the axle and save the hardware.
4. Supporting the front axle with a floor jack, disconnect the front shock and the sway bar end link from the axle. Save all hardware.
5. Lower the front axle allowing the coil spring to come free of tension. **EXERCISE EXTREME CAUTION WHEN WORKING WITH COIL SPRINGS UNDER LOAD!** Remove the coil spring and coil isolator from the truck and save. Remove the coil spring perch and save, discard the original bolt.
6. Locate the FT30218 Shim(s) and 14mm bolts. If you are installing one (1) shim, use the 60mm bolt and use the 70mm bolt if installing two (2) of the shims. Place the shim on the axle pad with the flat side facing toward the upper ball joint. Place the factory spring perch on the shim(s) and align it so that the perch is in its factory position. The perch has FRT stamped in it to locate it to the front of the axle. Torque to 100lbs. SEE PHOTOS BELOW AND IN NEXT COLUMN.



7. Using the coil spring that was previously removed, install the coil spring into the truck in the factory location using the original factory upper coil isolator.
8. Using the floor jack, raise the front axle enough to compress the front coil approx. 1" and re-connect the shock and sway bar end link. Replace the brake line and ABS line tabs on the front side and the rear side of the coil spring perch on the axle.

9. Reinstall the front tires and torque the wheel lugs to factory specifications, located in the owner's manual. Set the truck back on the ground. **WHILE TURNING THE STEERING WHEEL FULLY IN EACH DIRECTION, MAKE SURE THERE IS AMPLE CLEARANCE BETWEEN THE WHEELS, TIRES, CONTROL ARMS, BRAKE LINES AND ABS**

WIRES. Check the front toe in and reset it to factory specifications.