



INSTALLATION INSTRUCTIONS



2005-2015 FORD F250/350 SUPERDUTY 4WD

2" LEVELING KIT

FT5205i

- PARTS LIST -

2005-2013 FORD F250/350 SUPERDUTY 4WD, 2" LEVELING KIT

FTL5205		2F 2005-2015 F350/350 4WD
2	FT30162	COIL SPACER 2"
2	FT120	SLEEVE 1.000 X .563 X .310
1	FT30580	SHOCK EXTENSION BRACKET DRIVER
1	FT30581	SHOCK EXTENSION BRACKET PASSENGER
2	FT30171	BRAKE LINE BRACKET
2	FT30172	BRAKE LINE BRACKET (AXLE)
1	FT30586	HARDWARE KIT
1	FT5205i	INSTRUCTIONS
1	FTAS12	STICKER FT BLUE 10X4 DIE CUT
1	FTAS16	DRIVER WARNING DECAL

FT30586 - HARDWARE KIT		LOCATION
2	M14-2.0 X 80MM HEX BOLT	SHOCK EXT.
4	M14 FLAT WASHER	
2	M14 X 2.0 NYLOCK NUT	
2	5/16-18 X 1 HEX BOLT	BRAKE LINE BRACKET
2	5/16-18 NYLOCK NUT	
4	5/16" SAE WASHER	
2	M14 FLAT WASHER CL 10 ZINC	
2	M14-2.0 X 100MM HEX BOLT	
4	M8 FLAT WASHER	
4	M8-1.25 X 20MM HEX HEAD	
1	THREAD LOCKING COMPOUND 2 MIL	

READ THIS BEFORE YOU BEGIN INSTALLATION -

Check all parts to the parts list above before beginning installation.

Read all instructions thoroughly from start to finish before beginning the installation. If these instructions are not properly followed severe frame, driveline and / or suspension damage may occur.

Check your local city and state laws prior to the installation of this system for legality. Do not install if not legal in your area.

Prior to the installation of this suspension system perform a front end alignment and record. Do not install this system if the vehicle alignment is not within factory specifications. Check for frame and suspension damage prior to installation.

Use the provided thread locking compound on all hardware.

WARNING- Installation of this system will alter the center of gravity of the vehicle and may increase roll over as compared to stock.

Vehicles that receive oversized tires should check ball joints, uniballs, tie rods ends, pitman arm and idler arm every 2500-5000 miles for wear and replace as needed.

Required Tools (Not Included)

Basic Hand Tools
 Floor Jack
 Jack Stands
 Assorted Metric and S.A.E sockets, and Allen wrenches
 Torque Wrench
 Die Grinder w/ Cutoff Wheel or Sawzall

Prior to installing this kit, with the vehicle on level ground. Measure the height of your vehicle. This measurement can be recorded from the center of the wheel, straight up to the top of the inner fender lip. Record the measurements below.

LF: _____ RF: _____

LR: _____ RR: _____

- INSTRUCTIONS -

FRONT SUSPENSION

1. Disconnect the negative terminal on the battery. Jack up the front end of the truck and support the frame rails with jack stands. **NEVER WORK UNDER AN UNSUPPORTED VEHICLE!** Remove the front tires.
2. With the front axle supported, Disconnect the sway bar from the endlink. Save hardware. **SEE FIGURE 1**

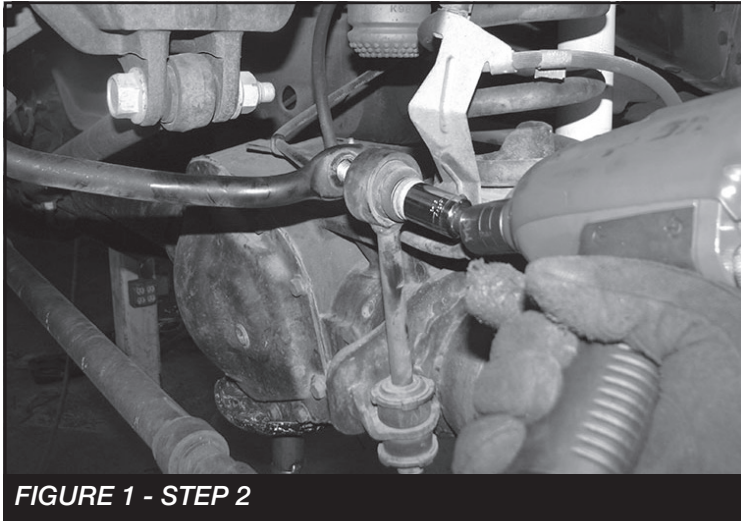


FIGURE 1 - STEP 2

3. Remove the brake line bracket from the frame. (05-10 models) **SEE FIGURE 2.**

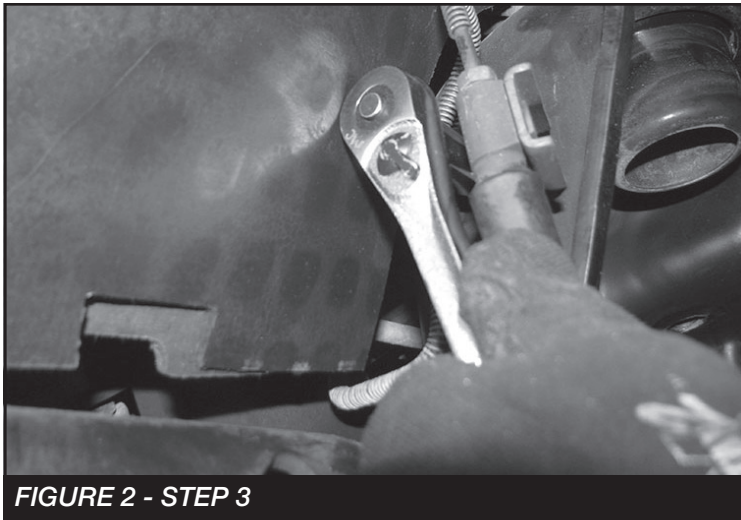


FIGURE 2 - STEP 3

4. Remove and save lower shock hardware. **SEE FIGURE 3**

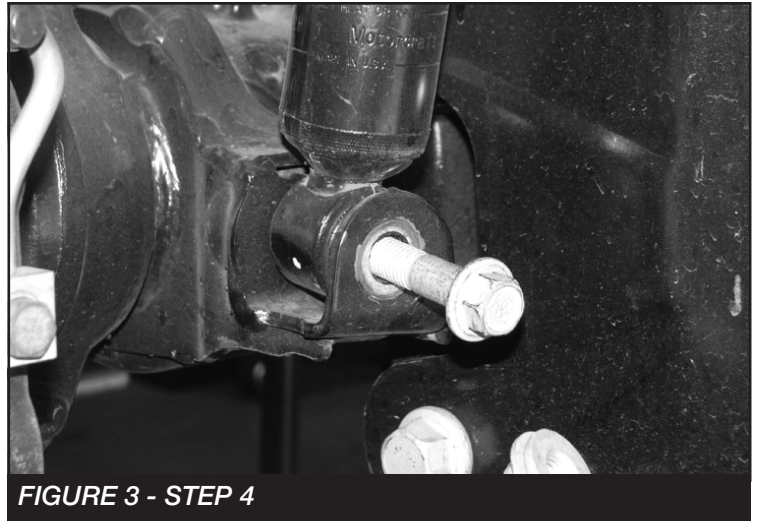


FIGURE 3 - STEP 4

5. Carefully lower the front axle and remove the factory coil spring. **SEE FIGURE 4**



FIGURE 4 - STEP 5

6. Remove the factory lower spring perch from the axle and discard the factory hardware. Install FT30162 (2" spacer) using the M14 bolt and washer. **SEE FIGURE 5-6**

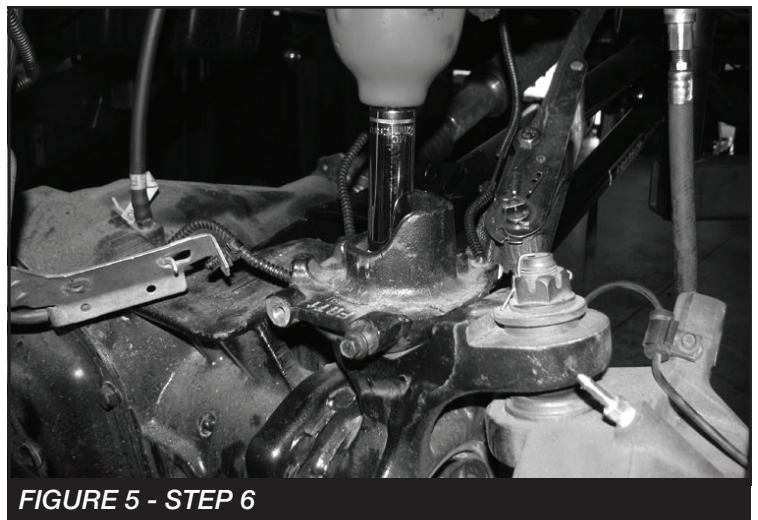


FIGURE 5 - STEP 6

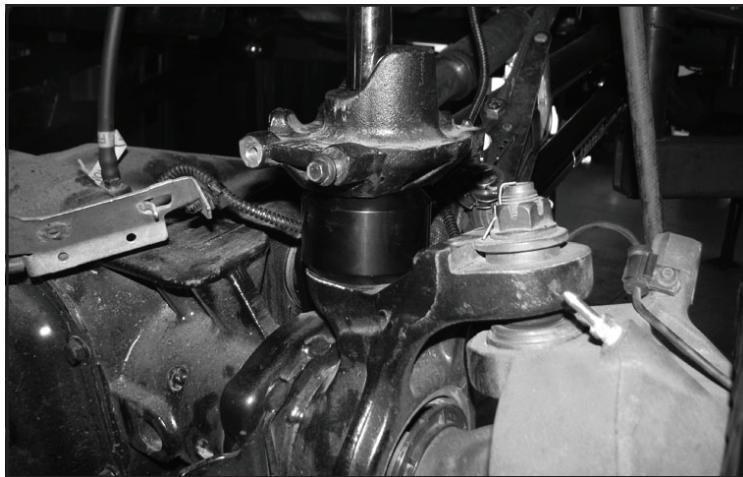


FIGURE 6 - STEP 6

7. Locate FT30172 (Brake line bracket), attach the bracket to the factory spring perch using the supplied 8mm hardware. Using the 5/16 hardware attach the factory brake line bracket to the new Fabtech bracket. **SEE FIGURE 7**

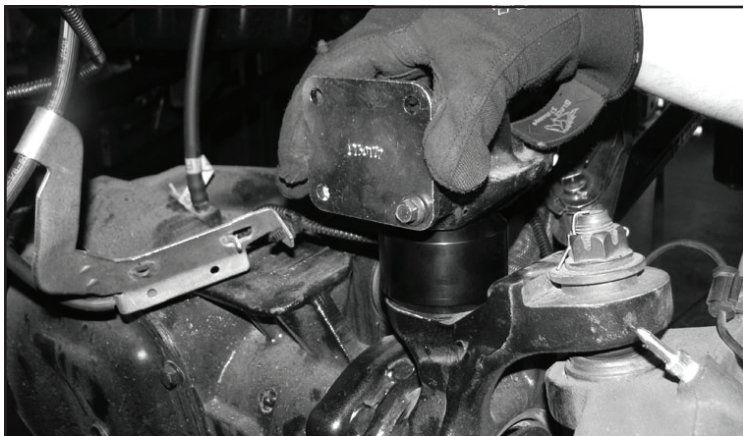


FIGURE 7 - STEP 7

8. Re-install the factory coil spring.
9. Locate the FT30580 (driver shock extension), using the factory lower shock hardware, install the shock extension into the factory lower shock mount. Torque to 160 ft-lbs. **SEE FIGURE 8**

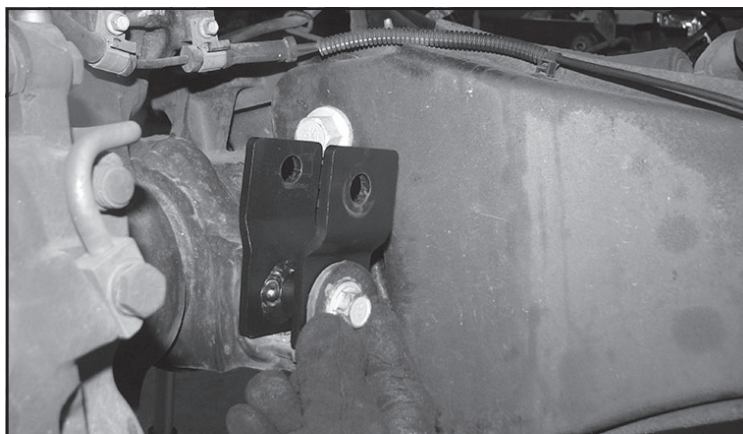


FIGURE 8 - STEP 9

10. Locate the supplied M14-2.0x80mm HEX bolts, washers and nuts. Re-install the factory shock using the supplied M14 hardware. Torque the lower shock bolt to 160 ft-lbs. And the upper shock mount 58 ft-lbs. **SEE FIGURE 9**

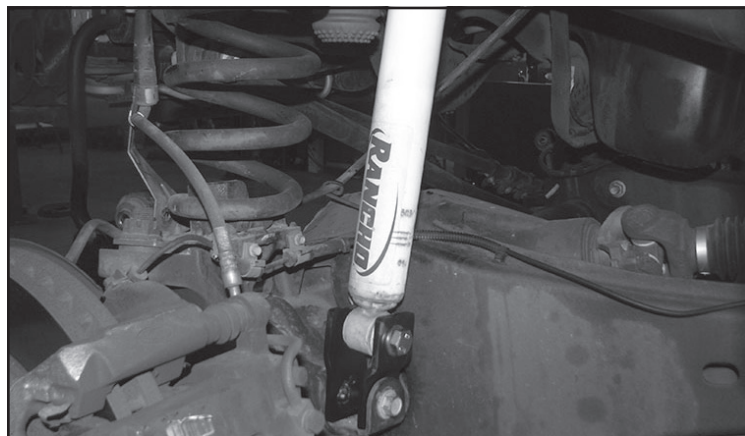


FIGURE 9 - STEP 10

FOR 2011-UP MODEL TRUCKS, SKIP TO STEP 12

11. Locate the factory brake line mount hole on the front side of the coil bucket, attach FT30171 (brake line bracket) to the hole using the original factory hardware. Attach the factory brake line to the new bracket using the supplied 5/16" hardware. **SEE FIGURE 10**

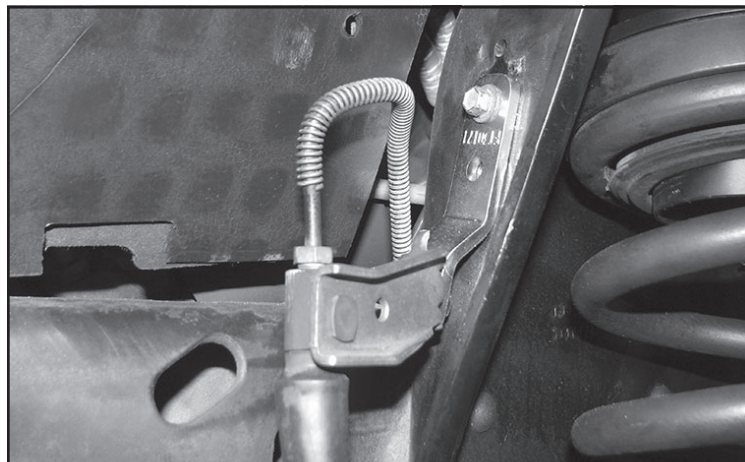


FIGURE 10 - STEP 11

12. Reconnect the sway bar using the factory hardware.
13. Install tires and wheels and torque lug nuts to wheel manufacturer's specifications. Turn front tires left to right and check for appropriate tire clearance. **Note - Some oversized tires may require trimming of the front bumper & valance.**
14. Check front end alignment and set to factory specifications. Readjust headlights.

15. Recheck all bolts for proper torque.
16. Recheck brake hoses, ABS wires and suspension parts for proper tire clearance while turning tires fully left to right.
17. Check the fluid in the front and rear differential and fill if needed with factory specification differential oil. **Note - some differentials may expel fluid after filling and driving. This can be normal in resetting the fluid level with the new position of the differential/s.**
18. Install Driver Warning Decal. Complete product registration card and mail to Fabtech in order to receive future safety and technical bulletins on this suspension.

Vehicles that will receive oversized tires should check ball joints, uniballs and all steering components every 2500-5000 miles for wear and replace as required.

RE-TORQUE ALL NUTS, BOLTS AND LUGS AFTER 50 MILES AND THEREAFTER UNTIL FASTENERS RETAIN TORQUE SETTING.