



## INSTALLATION INSTRUCTIONS



**2005-2010 FORD F250/350 SUPERDUTY 4WD**

**2.5" LEVELING KIT**

**FT5202i**

**- PARTS LIST -**  
**2005-2010 FORD F250/350 SUPERDUTY 4WD, 2.5" LEVELING KIT**

FTL5202	2.5F 2005-2010 F350/350 4WD
2	FT30546BK COIL SPACER
2	FT30554 COIL ISOLATOR
1	FT30580 SHOCK EXTENSION BRACKET DRIVER
1	FT30581 SHOCK EXTENSION BRACKET PASSENGER
1	FT30556 HARDWARE KIT
2	FT30171 BRAKE LINE BRACKET
1	FT5202i INSTRUCTIONS
1	FTAS12 STICKER FT BLUE 10X4
1	FTAS16 DRIVER WARNING DECAL
1	FTREGCARD REGISTRATION CARD

FT30556 - HARDWARE KIT	LOCATION
2 M14-2.0 X 80MM HEX BOLT	SHOCK EXT.
4 M14 FLAT WASHER	
2 M14 X 2.0 NYLOCK NUT	
2 5/16-18 X 1 HEX BOLT	BRAKE LINE BRACKET
2 5/16-18 NYLOCK NUT	
4 5/16" SAE WASHER	
1 THREAD LOCKING COMPOUND	

Check all parts to the parts list above before beginning installation.

Read all instructions thoroughly from start to finish before beginning the installation. If these instructions are not properly followed severe frame, driveline and / or suspension damage may occur.

Check your local city and state laws prior to the installation of this system for legality. Do not install if not legal in your area.

Prior to the installation of this suspension system perform a front end alignment and record. Do not install this system if the vehicle alignment is not within factory specifications. Check for frame and suspension damage prior to installation.

Use the provided thread locking compound on all hardware.

WARNING- Installation of this system will alter the center of gravity of the vehicle and may increase roll over as compared to stock.

Vehicles that receive oversized tires should check ball joints, uniballs, tie rods ends, pitman arm and idler arm every 2500-5000 miles for wear and replace as needed.

***Required Tools (Not Included)***

- Basic Hand Tools
- Floor Jack
- Jack Stands
- Assorted Metric and S.A.E sockets, and Allen wrenches
- Torque Wrench
- Die Grinder w/ Cutoff Wheel or Sawzall

Prior to installing this kit, with the vehicle on level ground. Measure the height of your vehicle. This measurement can be recorded from the center of the wheel, straight up to the top of the inner fender lip. Record the measurements below.

LF: \_\_\_\_\_ RF: \_\_\_\_\_

LR: \_\_\_\_\_ RR: \_\_\_\_\_

# - INSTRUCTIONS -

## FRONT SUSPENSION

1. Disconnect the negative terminal on the battery. Jack up the front end of the truck and support the frame rails with jack stands. **NEVER WORK UNDER AN UNSUPPORTED VEHICLE!** Remove the front tires.
2. With the front axle supported, Disconnect the sway bar from the endlink. Save hardware. **SEE FIGURE 1**

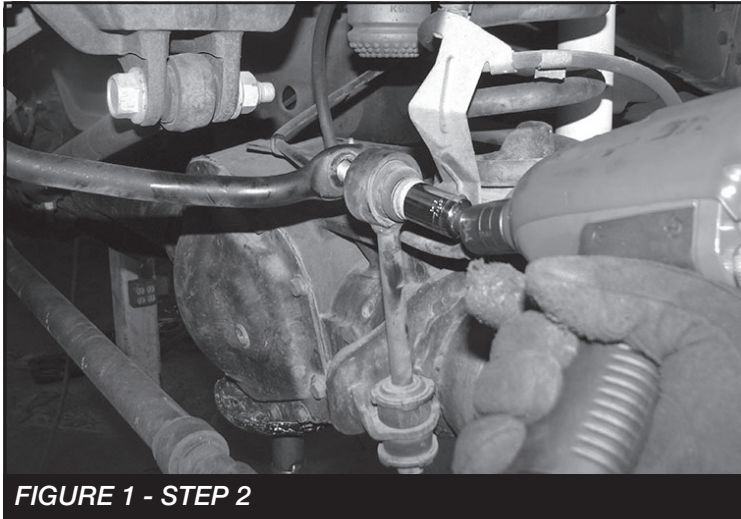


FIGURE 1 - STEP 2

3. Remove the brake line bracket from the frame. For 05-07 models **SEE FIGURE 2**. For 08-10 models **SEE FIGURE 3**.

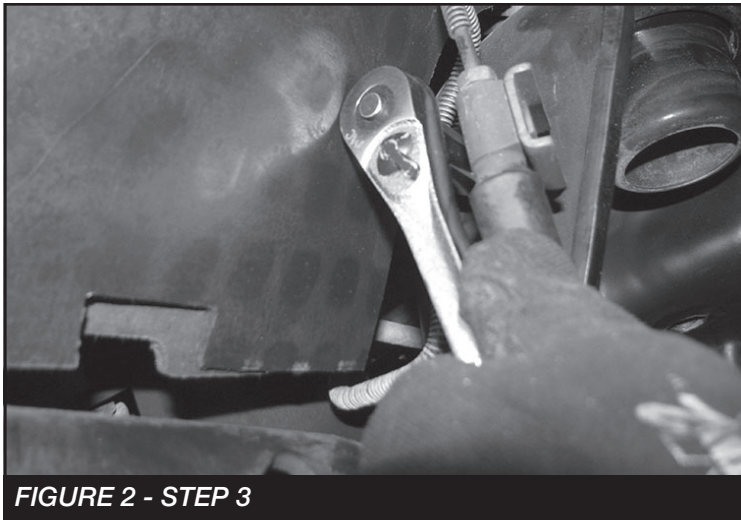


FIGURE 2 - STEP 3

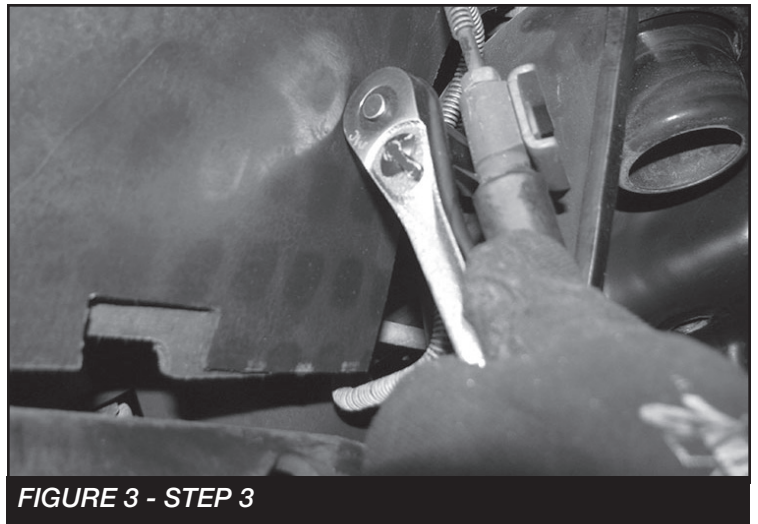


FIGURE 3 - STEP 3

4. Remove and save upper and lower shock hardware and remove the shock. **SEE FIGURE 4-5**



FIGURE 4 - STEP 4

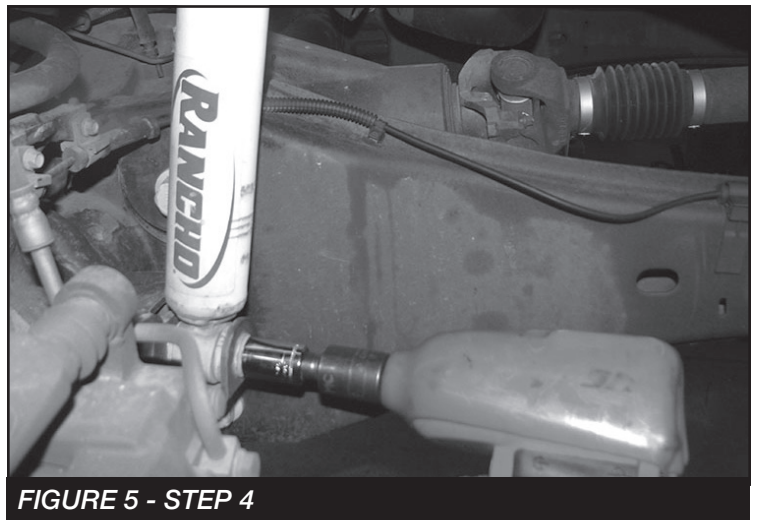
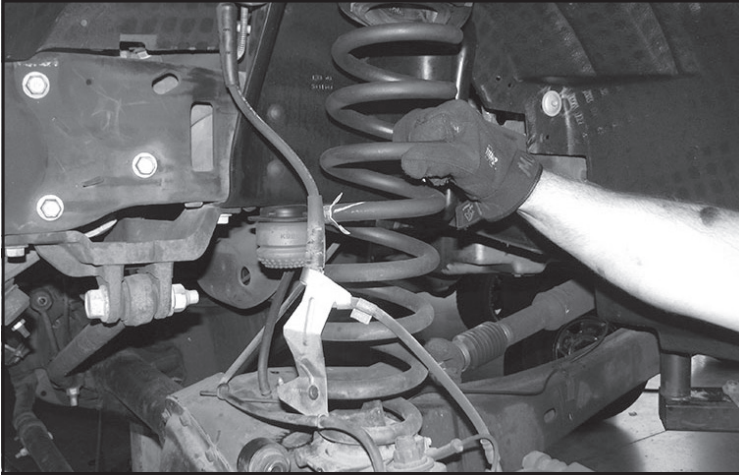


FIGURE 5 - STEP 4

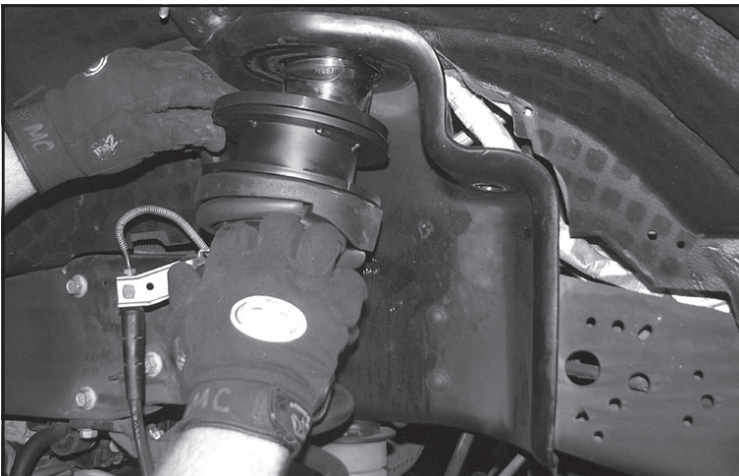


5. Carefully lower the front axle and remove the factory coil spring. **SEE FIGURE 6**



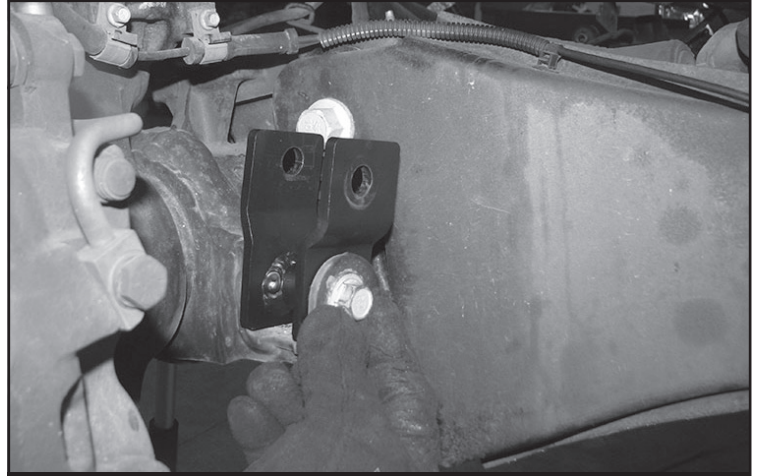
**FIGURE 6 - STEP 5**

6. Install the FT30546BK (spacer) on top of the factory rubber isolator. Next, install the FT30554 (Isolator) onto the Fabtech spacer. Install the whole assembly into the vehicle, **Make sure the spring is clocked correctly into the bottom spring mount. SEE FIGURE 7**



**FIGURE 7 - STEP 6**

7. Locate the FT30580 (driver shock extension), using the factory lower shock hardware, install the shock extension into the factory lower shock mount. Torque to 160 ft-lbs. **SEE FIGURE 8**



**FIGURE 8 - STEP 7**

8. Locate the supplied M14-2.0x80mm HEX bolts, washers and nuts. Re-install the factory shock using the supplied M14 hardware. Torque the lower shock bolt to 160 ft-lbs. And the upper shock mount 58 ft-lbs. **SEE FIGURE 9**



**FIGURE 9 - STEP 8**

9. **(05 - 07 MODELS)** On the factory brake line bracket, either cut off the positioning tab or bend it. Locate the FT30171 (Brake line bracket) and 5/16" hardware. Install the FT30171 to the factory bracket using the 5/16" hardware. Torque to 29 ft-lbs. Then using the factory bolt re-install the assembly using the top hole on the new bracket. Torque to 29 ft-lbs. **SEE FIGURE 10-11**

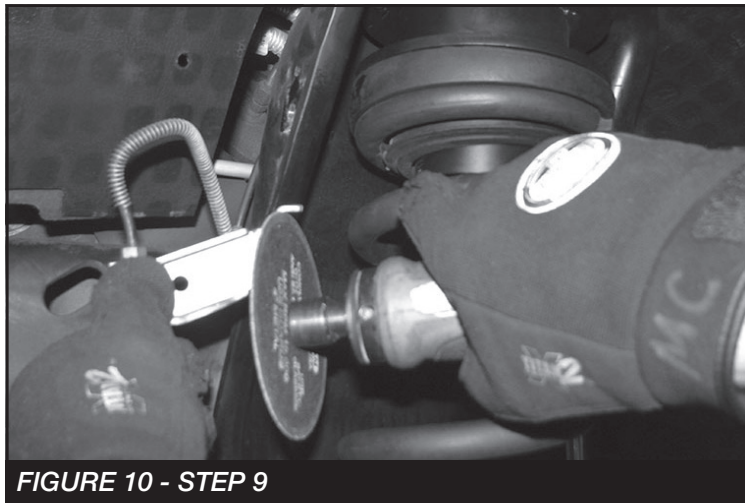


FIGURE 10 - STEP 9

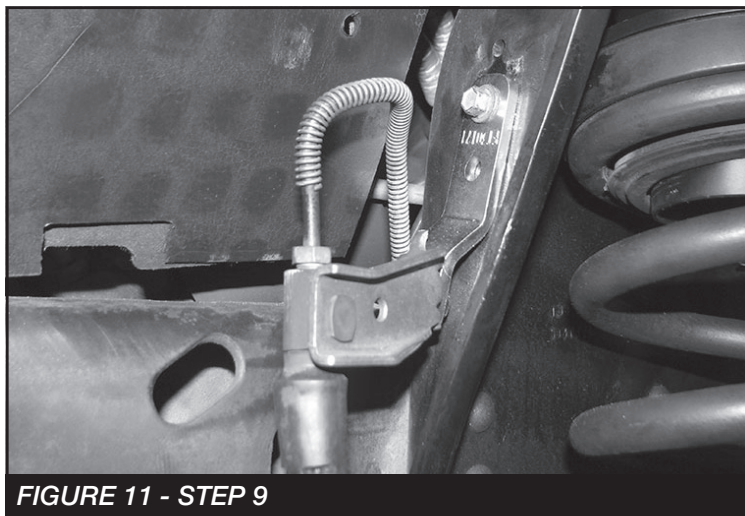


FIGURE 11 - STEP 9

10. **08 - 10 MODELS)** On the factory brake line bracket either cut off the positioning tab or bend it flat.
11. Install tires and wheels and torque lug nuts to wheel manufacturer's specifications. Turn front tires left to right and check for appropriate tire clearance. **Note - Some oversized tires may require trimming of the front bumper & valance.**
12. Check front end alignment and set to factory specifications. Readjust headlights.
13. Recheck all bolts for proper torque.
14. Recheck brake hoses, ABS wires and suspension parts for proper tire clearance while turning tires fully left to right.
15. Check the fluid in the front and rear differential and fill if needed with factory specification differential oil. **Note - some differentials may expel fluid after filling and driving. This can be normal in resetting the fluid level with the new position of the differential/s.**

16. Install Driver Warning Decal. Complete product registration card and mail to Fabtech in order to receive future safety and technical bulletins on this suspension.

**Vehicles that will receive oversized tires should check ball joints, uniballs and all steering components every 2500-5000 miles for wear and replace as required.**

**RE-TORQUE ALL NUTS, BOLTS AND LUGS AFTER 50 MILES AND THEREAFTER UNTIL FASTENERS RETAIN TORQUE SETTING.**