



4331 EUCALYPTUS AVE. ~~ CHINO, CA 91710
 FTS8023 / FTS8046
Dual Steering Stabilizer System
 2005-15 Ford F250 & F350 4WD

Qty	Part #	Description FTS8023
2	FT7006	Steering Stabilizer
1	FT30145BK	Axle Bracket
2	FT30149	Tie Rod Brackets
1	FT739U	Axle U-Bolt
1	FT30312	Hdwr Sub-Assembly Kit

Qty	Part #	Description FTS8046
2	FTS6604	Steering Stabilizer
1	FT30145BK	Axle Bracket
2	FT30149	Tie Rod Brackets
1	FT739U	Axle U-Bolt
1	FT30312	Hdwr Sub-Assembly Kit

FT30312		Hdwr Sub-Assembly Kit
Qty	Part #	Description
4	FT740U	Tie Rod U-Bolt
2	FT140357	Shock Stud Kit
1	FT58H	Axle u-bolt hardware
8	37160003052	3/8"-16 Nyloc Nut
8	37000005081	3/8" SAE Flat Washer
2	50132001081	1/2"-13 x 2" Hex Bolt
2	50000005081	1/2" SAE Flat Washer
1	FTLOCK	Thread Locking Compound
1	FTAS12	Sticker
1	FTREGCARD	Registration Card
2	FT8023i	Instruction Sheet

FT30312		Hdwr Sub-Assembly Kit
Qty	Part #	Description
4	FT740U	Tie Rod U-Bolt
2	FT140357	Shock Stud Kit
1	FT58H	Axle u-bolt hardware
8	37160003052	3/8"-16 Nyloc Nut
8	37000005081	3/8" SAE Flat Washer
2	50132001081	1/2"-13 x 2" Hex Bolt
2	50000005081	1/2" SAE Flat Washer
1	FTLOCK	Thread Locking Compound
1	FTAS12	Sticker
1	FTREGCARD	Registration Card
2	FT8023i	Instruction Sheet

TOOL LIST:

- Assorted Metric & Standard Wrenches
- Torque Wrench
- Measuring Tape
- Die Grinder With Cut-Off Wheel

READ BEFORE BEGINNING INSTALL

READ ALL INSTRUCTIONS THOROUGHLY FROM START TO FINISH BEFORE BEGINNING INSTALLATION.

DO NOT ALTER THE FINISH OF THESE COMPONENTS, EXAMPLE- CHROMING, ZINC PLATING OR PAINTING. CHANGING THE FINISH CAN CAUSE STRUCTURAL FATIGUE OF COMPONENTS.

THIS STABILIZER KIT WILL NOT WORK ON STOCK HEIGHT VEHICLES. IT IS DESIGNED TO WORK ONLY ON VEHICLES WITH FABTECH LIFT SYSTEMS

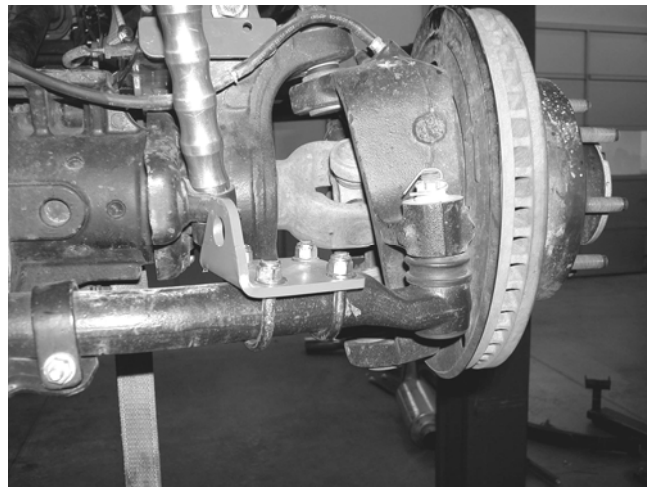
THIS SYSTEM WILL ONLY WORK IN CONJUNCTION WITH FABTECH 4", 6", 8" AND 10" LIFT SYSTEMS.

Begin Installation:

1. Disconnect the negative terminal on the battery. Park the truck on level ground and set the emergency brake.
2. Locate FT30145 Axle Bracket and FT140357 Shock Stud kits. Attach the stub kits to the two front holes on the axle bracket and torque to 55 ft lbs. .
3. Locate FT30145 Axle Bracket with the shock studs installed and place the axle bracket in the center of the axle positioning it straight forward. Using the supplied FT739U U-Bolt and 5/8" hardware, attach the axle bracket to the axle. Leave loose at this time. SEE PHOTO BELOW.



4. Working from the driver side of the truck, locate FT30149 tie rod end bracket and position it 2" from the outer tie rod end. Using the Supplied FT740U U-Bolt and 3/8" hardware attach the bracket to the tie rod end. Leave loose at this time. SEE PHOTO BELOW.



5. Locate FT7006 or FTS6604 Steering Stabilizer and attach it to the stud on the axle bracket using the supplied hardware along with a small amount of the supplied thread locking compound. Torque bolt to 30 ft. lbs.
6. Extend the Steering Stabilizer out 5 1/2" and attach the stud end of the stabilizer to the tie rod bracket using the supplied stem bushing and hardware. You may need to move the tie rod end bracket from where it was originally positioned. Tighten the stem hardware until the bushings begin to squeeze out.
7. Repeat steps four through six on the passenger side of the truck.
8. Torque the Axle Bracket U-Bolt to 80 ft lbs. Torque the Tie Rod bracket U-Bolts to 32 ft lbs with the stabilizer still extended 5 1/2".

9. Once the tie rod u-bolts are torque to 32 ft. lbs. using a die grinder with a cut off wheel, trim the residual length of the u-bolt flesh with the nut. SEE PHOTO BELOW.



10. Steer the truck fully to the left and right to make sure the steering stabilizers are not bottoming out. Adjust the tie rod end bracket as needed. Check the clearance of the shock stud end to the u-bolts previously cut for proper clearance.
11. Re-torque all the hardware after 200 miles.