



Installation Instructions

1988-1998 2wd Chevy C1500

FTS8012/ FTS8039

Steering Stabilizer Kit

PARTS LIST

Qua	Part #	Description
1	FTS7002	Stabilizer
1	FT20226	Frame Bracket
1	FT20227	Tie Rod Bracket
2	FTS31UBK	U-Bolt Kit
1	31181001152	Thread Forming Screw 5/16"
1	FT8012i	Instruction Sheet

Qua	Part #	Description
1	FTS6602	Stabilizer
1	FT20226	Frame Bracket
1	FT20227	Tie Rod Bracket
2	FTS31UBK	U-Bolt Kit
1	31181001152	Thread Forming Screw 5/16"
1	FT8012i	Instruction Sheet

TOOL LIST- (NOT INCLUDED)

Assorted Metric & Standard Wrenches

Drill With Assorted Drill Bits

Torque Wrench

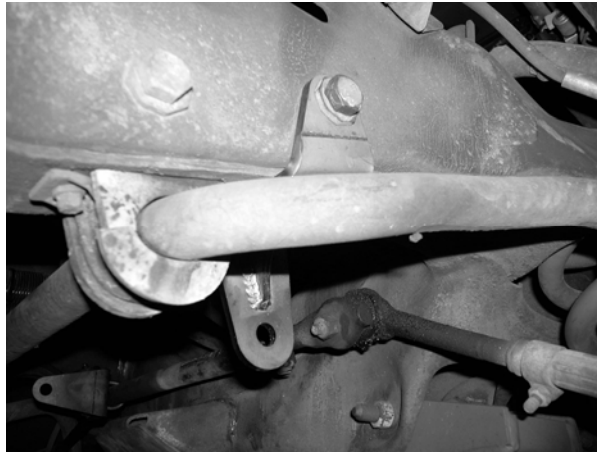
READ ALL INSTRUCTIONS THOROUGHLY FROM START TO FINISH BEFORE BEGINNING INSTALLATION! IF THESE INSTRUCTIONS ARE NOT PROPERLY FOLLOWED, SEVERE FRAME, DRIVELINE AND / OR SUSPENSION DAMAGE MAY RESULT.

CHECK FOR FRAME AND SUSPENSION DAMAGE PRIOR TO INSTALLTION. THIS KIT DOES NOT REQUIRE WELDING FOR INSTALLATION. DO NOT WELD ANY OF THESE COMPONENTS. THE INSTALLATION OF THIS KIT SHOULD BE PERFORMED BY A PROFESSIONAL MECHANIC.

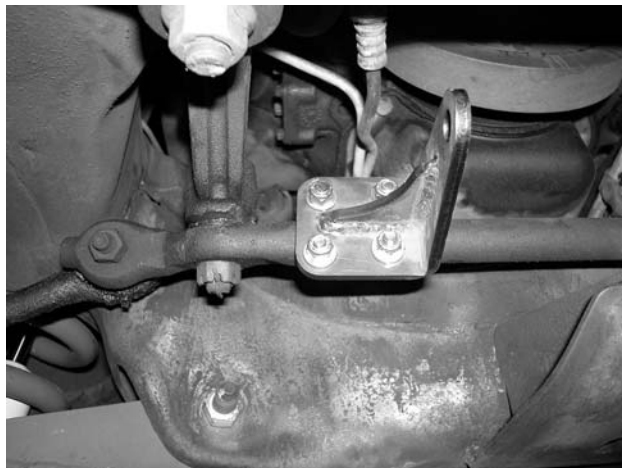
INSTALLATION-

1. Disconnect the negative terminal on the battery. Position the front tires of the vehicle to straight ahead.
2. Locate the factory steering gear box bolts on the driver side of the frame. Remove the rear bolt and save.

3. Locate the Fabtech frame bracket FT20226. Place the bracket on the outside of the frame over previously remove steering box bolt. Reinstall the factory bolt and torque to 75 ft. lbs. SEE PHOTO BELOW.



4. Using a drill with a 9/32" drill bite, drill a guide hole for the bottom support hole on the Fabtech frame bracket. Using the supplied 5/16" thread forming bolt carefully attach to the frame.
5. Locate FT20227 Tie Rod bracket along with the supplied FT31UBK U-bolts and loosely attach the tie rod end bracket to the tie rod end as shown below. SEE PHOTO BELOW.



6. Locate steering stabilizer and extend the stabilizer shaft half way out of the body. Attach the body end of the stabilizer to the frame bracket using the provided bushings, washers and nut. Attach the shaft end of the stabilizer to the tie rod bracket. Take care as not to compress or extend the stabilizer shaft from the established half way point of travel. Tighten the Fabtech tie rod bracket to centerlink. Torque to 20LBS. Tighten the stabilizer bushings to swell the rubber bushings.
7. Recheck each nut and bolt for proper torque.
8. Turn the wheels left to right and check for proper turning radius. Adjust the steering stabilizer centerlink bracket to achieve left to right turning radius as required.