



Installation Instructions

2008-10 FORD 4WD F450/F550 SUPER DUTY FTS22129 6" REAR LIFT SYSTEM

PARTS LIST:

FTS22129 6" F450/F550 Rear Box		
Qty	Part #	Description
2	FTBK4	4" Rear Lift Blocks
4	FT750U	7/8" U-bolts
1	FT30369	Hdwr Sub-Assembly Kit
1	FTS419	S/D 4wd Driveshaft Shim Kit
1	FT30362BK	Drv. Sway Bar Bracket
1	FT30363BK	Pass. Sway Bar Bracket
2	FT30364	Rear Bumpstop Extension

FT30369 Hardware Sub-Assembly		
Qty	Part #	Description
8	FT168	7/8" Heavy Duty Flat Washer
8	FT169	7/8" High Nut
1	FT30365	Rear Brake Line Bracket
2	FT178	Block Pin Sleeve
9	37161251081	3/8"-16 x 1 1/4" Hex Bolt
9	37160003052	3/8"-16 NyLok Nut
18	37000005081	3/8" SAE Flat Washer
4	50000005081	1/2" SAE Flat Washer
2	50130003052	1/2"-13 Nylok Nut
2	50131501081	1/2"-13 x 1 1/2" Hex Bolt
1	FTLOCK	Thread Locking Compound
1	FTREGCARD	Reg. Card
1	FTAS16	Decal
1	FTAS12	Fabtech Sticker

Tool List: (Not Included)

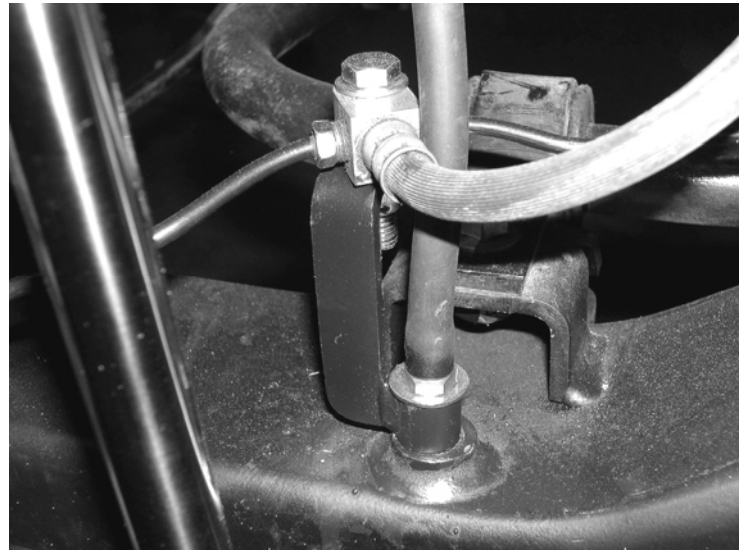
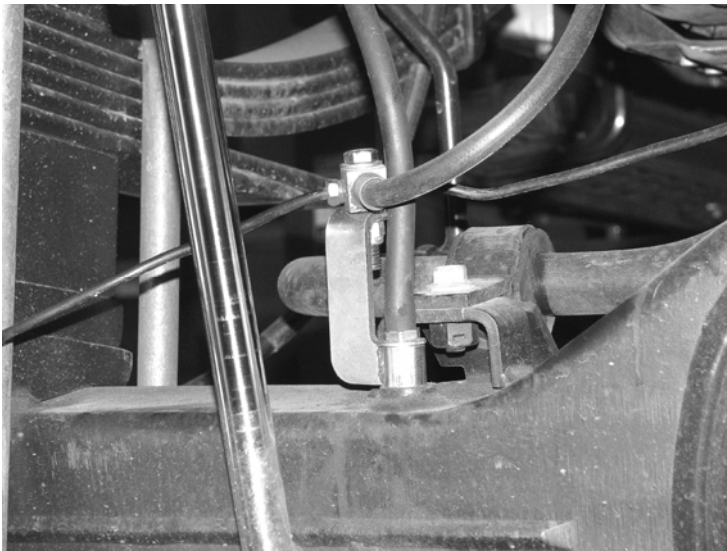
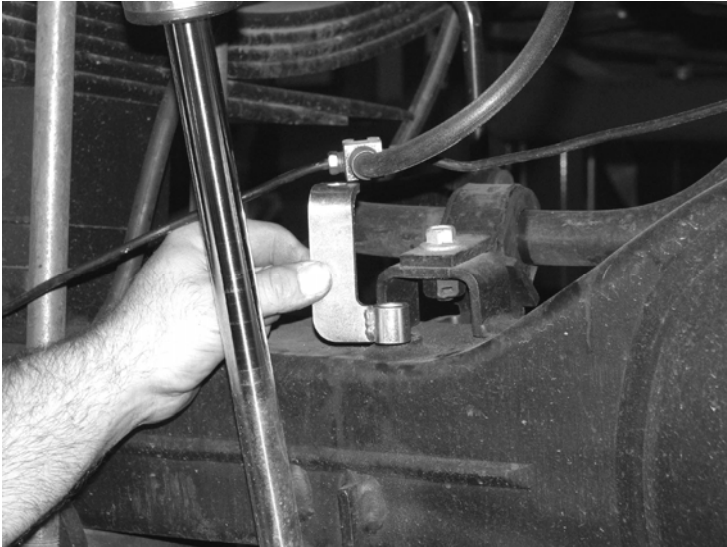
- Floor Jack
- Jack Stands
- Assorted Metric and S.A.E Sockets & Allen Wrenches

READ ALL INSTRUCTIONS THOROUGHLY FROM START TO FINISH BEFORE BEGINNING INSTALLATION!

CHECK ALL PARTS INCLUDED IN THIS KIT TO THE PARTS LIST ABOVE BEFORE BEGINNING INSTALLATION OF THIS KIT. IF ANY PIECES ARE MISSING, CONTACT FABTECH.

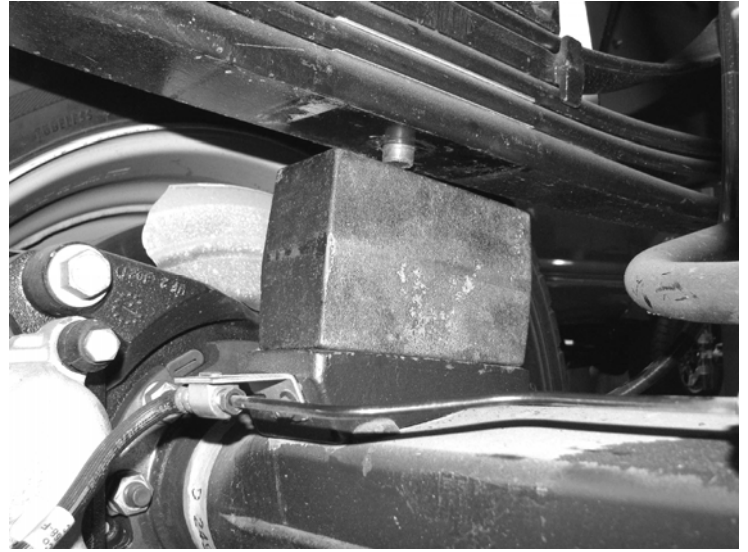
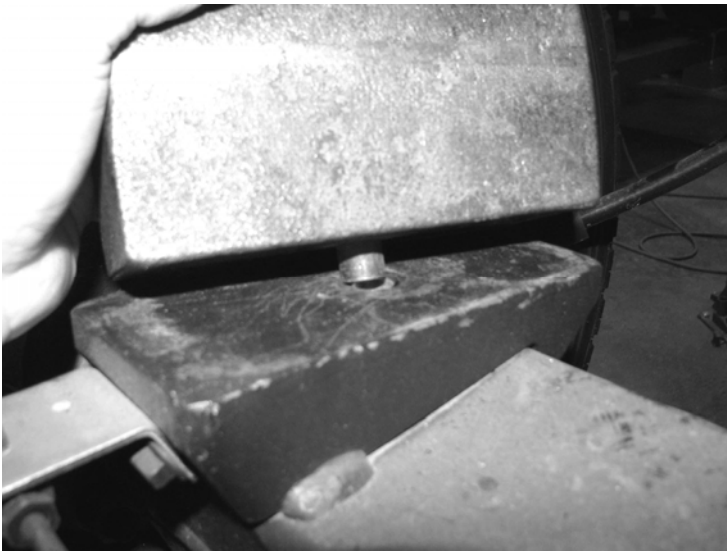
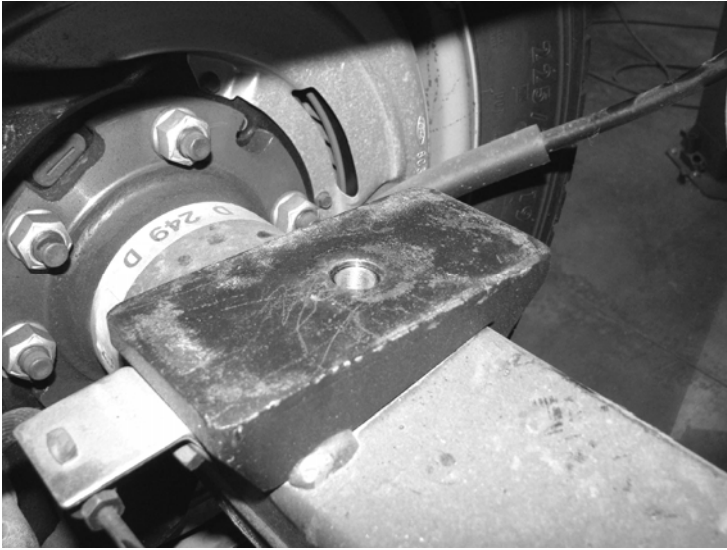
INSTRUCTIONS:

1. Disconnect the negative terminal on the battery. Jack up the rear end of the vehicle and support the frame rails with jack stands. Supporting the rear differential remove and discard the rear shocks and u-bolts. Lower the axle down slowly. Use care not to over extend the brake hose. **NEVER WORK UNDER AN UNSUPPORTED VEHICLE!**
2. Locate and remove the rear brake line distribution block & differential vent hose on the driver side rear axle tube, save hardware. Locate FT30365 Rear Brake Line Bracket and attach to the axle tube with the factory hardware, re-attach the diff vent hose. Attach the block the new bracket with the supplied 3/8" hardware. Torque to ** 52 lbs. SEE PHOTOS BELOW.



3. Locate the supplied rear lift blocks. Drill the hole in the top of the block out to 3/4". Insert the supplied FT178 Block Pin Sleeve into the axle perch. Install the provided lift blocks with the short center pin of the block facing down to the axle. Using the supplied u-bolts, nuts, and washers align axle, lift blocks, and springs and torque to U-Bolts to 296lbs. SEE PHOTOS BELOW.



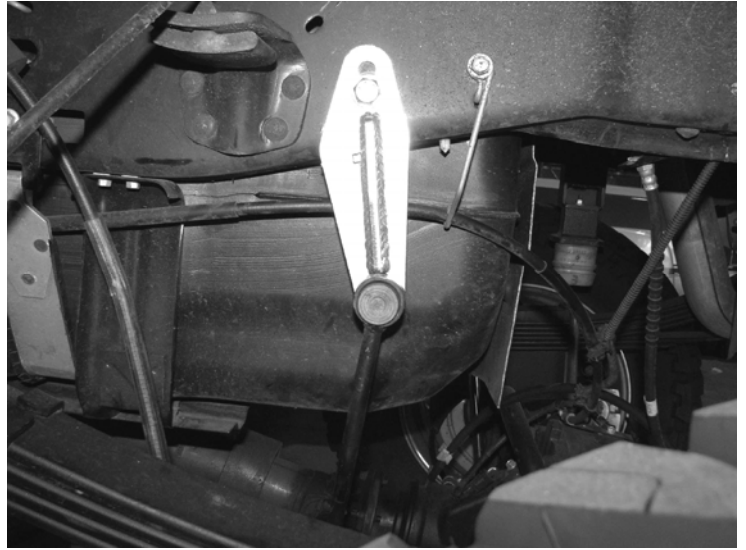
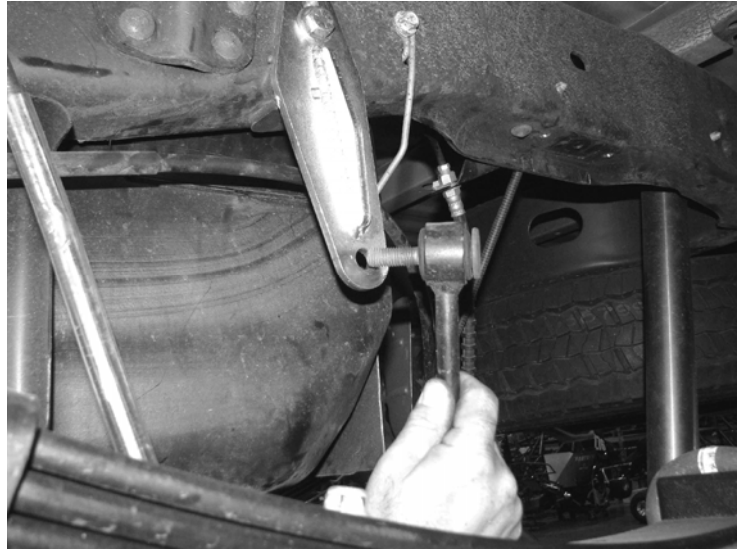


4. Install Fabtech Performance Shocks or Dirt Logic Shocks (not included) with the factory hardware and torque bolts to 65lbs.

COMPLETE STEP FIVE ON MODELS EQUIPPED WITH FACTORY REAR SWAY BAR.

5. Locate the FT30362BK (driver) and FT30363BK (pass) Rear Sway Bar Drop Brackets. Remove the factory sway bar end links from the frame and save the hardware. Place the drop bracket onto the frame so that the hole in the new bracket is aligned with the factory hole (**the shorter end of the bracket goes upward and attaches to the frame**) and attach with the supplied 1/2" hardware, torque to ** 127 ft. lbs. Drill a new 3/8" hole into the bottom of the frame. Use the supplied 3/8" hardware and install the bolts through the bracket into the frame, torque to ** 52ft. lbs. Install the end link into the bottom of the new drop bracket with the factory hardware and torque to ** 50 ft. lbs. SEE PHOTO BELOW.





6. Remove the rear factory bumpstops and save the hardware. Locate FT30364 Rear Bumpstop Extensions and the supplied 3/8" hardware. Attach the factory bumpstop to the new Fabtech extensions with the factory hardware, torque to **52 ft. lbs. Mount the extension to the frame in the factory bumpstop location with the supplied 3/8" hardware, torque to ** 52 ft. lbs. Mark & drill two new 3/8" holes from the extension to the bottom of the frame and attach with the supplied 3/8" hardware, torque to ** 52ft. lbs. SEE PHOTO ON NEXT PAGE.



7. Install FTS419 Drive Shaft Shim Kit per the instructions in the FTS419 box.
8. Recheck all bolts for proper torque. Recheck brake hoses and lines for proper clearances.
9. Install tires and wheels and torque lug nuts to wheel manufacturer's specifications. Turn front tires left to right and check for appropriate tire clearance. **Note-** Some oversized tires may require trimming of the bumper & valance.
10. Check front-end alignment and set to factory specifications. Readjust headlights.
11. Check the front-end alignment and set to the factory specifications.

**** USE THE SUPPLIED THREAD-LOCKING COMPOUND ON ALL HARDWARE.**

S.A.E. Bolt Torque Specification Chart

Grade 5

Grade 8

Metric



Standard

Metric

	Grade 5	Grade 8		Grade 8.8	Grade 10.9
SIZE	ft. lbs.	ft. lbs.	SIZE	ft. lbs.	ft. lbs.
1/4"	10	14	M-6	7	12
5/16"	21	29	M-8	17	29
3/8"	37	52	M-10	35	58
7/16"	59	83	M-12	65	100
1/2"	90	127	M-14	100	160
9/16"	129	184	M-16	150	240
5/8"	179	254	M-18	200	300
3/4"	317	450	M-20	300	400

RETORQUE ALL NUTS, BOLTS AND LUGS AFTER 50 MILES AND PERIODICALLY THEREAFTER.