



**FTS22103**  
**2008-2011 FORD SUPER DUTY 4WD**  
**REAR LIFT FOR 6" F-350 WITH FACTORY OVER [LOAD LEAF](#)**

**PARTS LIST:**

<b>Qty</b>	<b>Part #</b>	<b>Description</b>
2	FTBK3	3" Block
4	FT742U	U-Bolt
1	FT58H	5/8" Hardware
1	FTS419	Shim Kit
2	FT22103i	Instruction Sheet

**Tool List: (Not Included)**

**Floor Jack**

**Jack Stands**

**Assorted Metric and S.A.E Sockets & Allen Wrenches**

**READ ALL INSTRUCTIONS THOROUGHLY FROM START TO FINISH BEFORE BEGINNING INSTALLATION!**

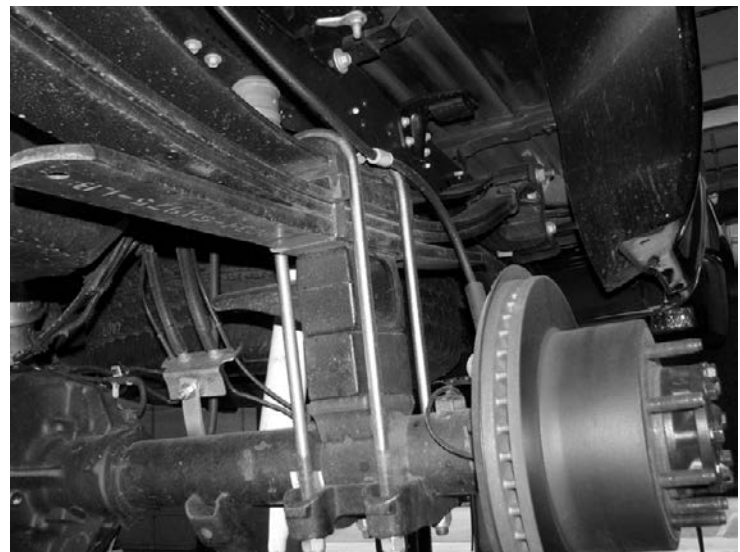
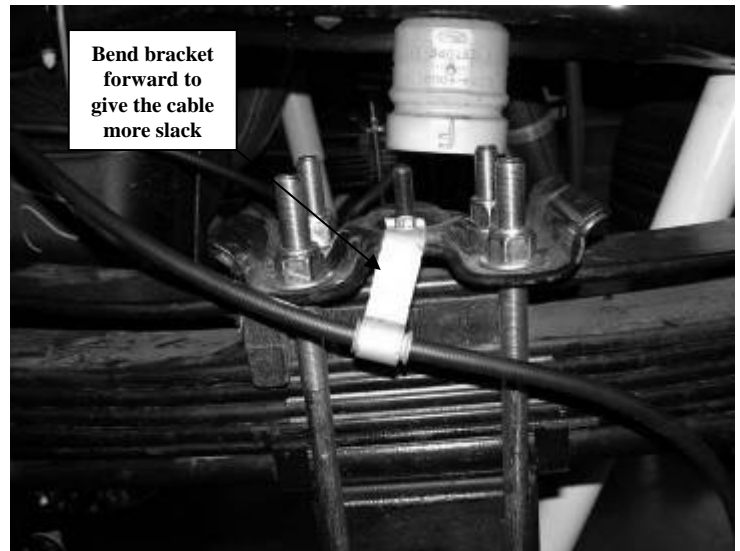
**IF TRUCK IS EQUIPPED WITH REAR SWAY BAR,FTS92010BK REAR SWAY BAR DROP BRACKET CAN BE PURCHASED.**

## **INSTRUCTIONS:**

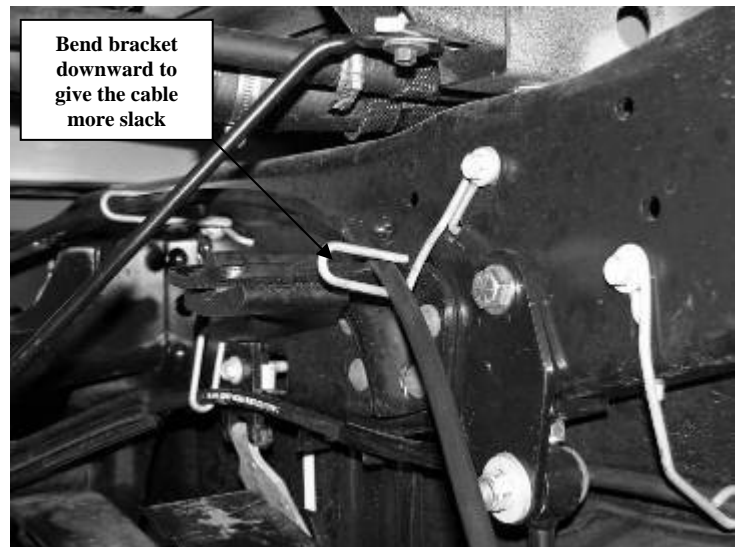
1. Disconnect the negative terminal on the battery. Jack up the rear end of the vehicle and support the frame rails with jack stands. Supporting the rear differential, remove and discard the rear shocks and u-bolts. Lower the axle down slowly. Use care not to over extend the brake hose.  
**NEVER WORK UNDER AN UNSUPPORTED VEHICLE!**
2. Locate and install the rear lift blocks, the factory block will be positioned on top of the new Fabtech block, with the short center pin of both blocks facing down, to the axle. The short end of the blocks should face to the front of the vehicle. Using the supplied u-bolts, nuts, and washers align axle, lift blocks, and springs and torque to U-Bolts to 180 ft-lbs. SEE PHOTO



3. Install Fabtech shock part number FTS7266 Performance Shocks or FTS81005 Dirt Logic (not included) with the factory hardware and torque bolts to 65lbs.
4. Rotate the E-Brake cable bracket so that it positions the cable below the spring plate and attach to the plate with the factory hardware. Once tightened, bend the bracket forward towards the front of the truck. Locate the upper E-brake cable bracket on the frame and bend it outward / down to give the cable some more slack. SEE PHOTOS BELOW



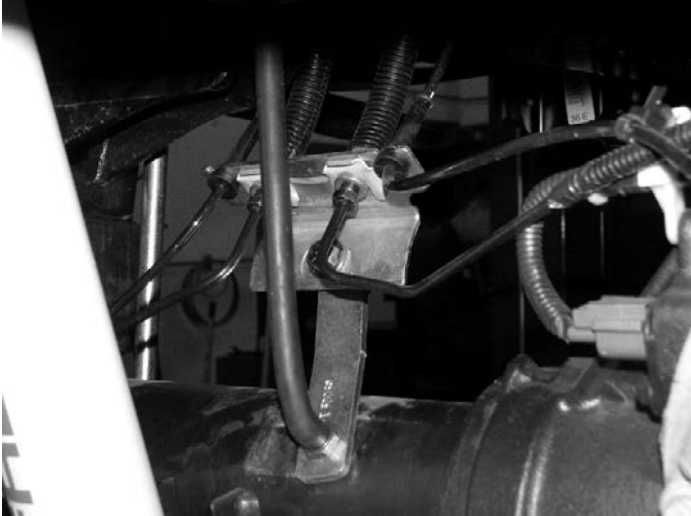
2011 rear configuration shown above.



5. Install FTS419 shim kit as per the instructions in the FTS419 box.

6. Recheck all bolts for proper torque. Recheck brake hoses and lines for proper clearances.

7. **2011 models only** .Locate the factory brake line mount on the driver side of the axle. Remove the vent line from the bolt and remove bolt, save hardware. Locate the supplied brake line bracket FT30059; attach the side with the sleeve to the axle using the factory hardware. Using the supplied 3/8" x 2" bolt, nut, and washer attach the brake line to the other end. Reattach vent line. SEE PHOTO BELOW.



8. Install tires and wheels and torque lug nuts to wheel manufacturer's specifications.

9. Readjust headlights.

10. Check the front-end alignment and set to the factory specifications.